



EN

## SYLVANIA ULTRA LED Recessed Slim Downlight

### Installation Instructions

The SYLVANIA ULTRA LED Recessed Slim Downlight Kit (Light Disk) is designed to be installed in standard 4", 5" and 6" insulated, non-insulated and air tight recessed downlight housings as well as fit inside existing standard 4" J-Box.

Note: It may be necessary to remove a socket mounting plate for adequate clearance in the compatible housing. Each lampholder shall be installed only in its intended manner and orientation. Not all existing recessed housings that meet this requirement will be compatible with the Light Disk. To ensure compatibility, a test installation should be conducted.

#### WARNING

- Risk of electrical shock. Disconnect power at fuse or circuit breaker before installing or servicing.
- To prevent early lamp failure, lamp should only be installed in operating environments ranging between -20°C and +40°C (-4°F and +104°F).
- To prevent overheating do not install in totally enclosed recessed fixtures.
- No user serviceable parts inside. To avoid electrical shock do not disassemble product.
- This product is not intended for use in emergency light fixtures or exit signs.
- Covered ceiling mount only.
- Risk of fire or electrical shock. Install this kit only in luminaires that have the construction features and dimensions shown in the photographs and/or drawings.
- Do not make or alter any open holes in an enclosure of wiring or electrical components during kit installation.
- To prevent wiring damage or abrasion, do not expose wiring to edges of sheet metal or other sharp objects.
- Installation should be performed only by a qualified electrician

#### CAUTION

- Turn power off before inspection, installation or removal.
- Suitable for use in dry and wet indoor and outdoor locations. Use only on 120 VAC, 60Hz circuits.

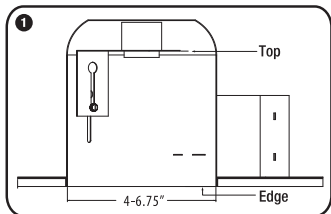
This device complies with Part 15 of the FCC rules and has been tested and found to comply with the limits for a Class B digital device. These limits are designed to provide reasonable protection against harmful interference in a residential installation. This equipment generates, uses, and can radiate radio frequency energy and, if not installed and used in accordance with the instructions, may cause harmful interference to radio communications. Please visit: [www.SYLVANIA.com/fccpart15b](http://www.SYLVANIA.com/fccpart15b) for more information.

#### How to install

Important safety information - read all instructions before installation.

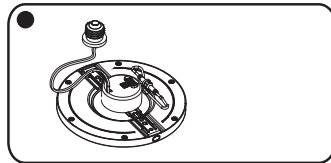
#### 1) 4", 5" and 6" housing installation

**Step 1:** Make sure the power is turned off at the source to the recessed housing(s) that you are installing Light Disk(s) in. Remove existing trim and CFL, or incandescent bulbs. Remove existing mounting plate from the recessed housing (if any) and then remove lamp socket from the plate.

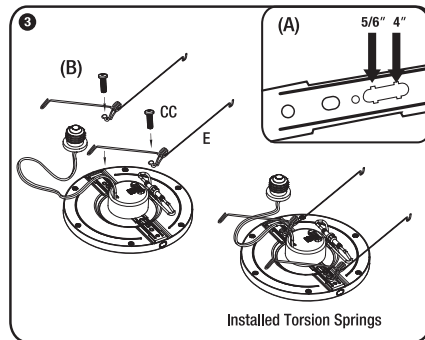


**Step 2:** Measure housing internal diameter and adjust spring clip position in order to achieve a tight fit inside the housing.

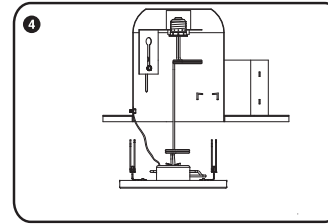
**NOTE: MOUNTING SPRING CLIPS INCORRECTLY AT POSITIONS LARGER THAN INTERNAL DIAMETER OF THE HOUSING MIGHT CAUSE BREAKAGE OF THE SPRING CLIPS DURING INSTALLATION.**



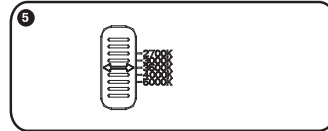
**Step 3:**  
 (A) Adjust slots before attaching your Torsion Springs to the bracket, verify what is the can size available: 4" or 5/6".  
 (B) Attaching the Torsion Springs. Attach the torsion springs (E) to the bracket provided separately, according to the slot choice per can size, using the two short screws (CC).



**Step 4:** Screw Edison base adapter into socket in recessed housing. Screw Light Disk ground wire in the recessed housing.

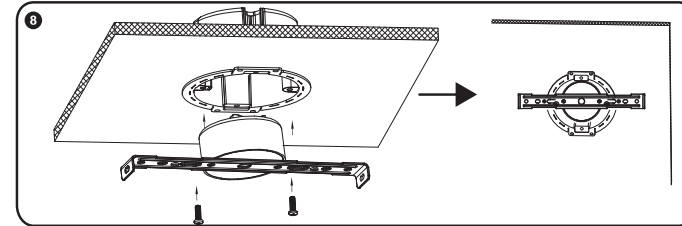


**Step 5:** Select the color temperature and switch the button according to the color of your choice.



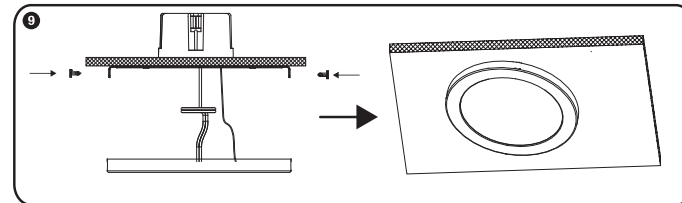
#### 2) Standard 4" J-Box retrofit installation

**Step 2:** Lock the bracket on existing J-Box with both screws.

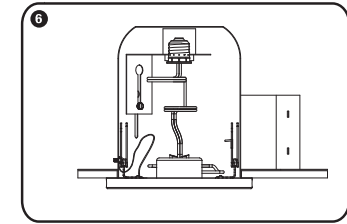


**Step 2:** Cut off existing Edison screw shell from Light Disk adapter and strip both wire ends. Make sure both live (black) and neutral (white) wires are accessible from J-Box. Wire nut live (black) wire with Light Disk black wire and wire nut neutral (white) wire with Light Disk white wire. Wire nut the ground wire with Light Disk ground wire.

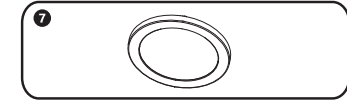
**Step 3:** Make sure both tree clips are screwed onto Light Disk. Carefully tuck wires inside J-Box. Find circular key holes on bracket, align Light Disk tree clips to the bracket holes and push Light Disk inside J-Box up flush to the ceiling surface.



**Step 6:** Guide the Light Disk into the housing for a tight fit.



**Step 7:** Push the Light Disk up flush to ceiling surface.



#### LEDVANCE LLC LED RECESSED SLIM DOWNLIGHT KIT LIMITED WARRANTY

The manufacturer warrants this Product to be free from defects in material or workmanship for 5 years from purchase date, when used as directed. This warranty does not cover accidents, abuse, acts of God, use in violation of law or electrical standards, or damage from primary side power sources (e.g., short circuits/power surges). The manufacturer may examine the Product to determine if Product is defective prior to providing a replacement. If Product has a defect in materials or workmanship, the manufacturer will replace it with the same or similar Product at no charge. LABOR IS NOT INCLUDED. In the United States, Product should be returned with proof of purchase date to the retail store where purchased. If not purchased from a retail store or for customers outside the United States, contact customer service at 1-800-654-0089; Fax: 866-632-9674; Email: [warranty\\_service@sylvania.com](mailto:warranty_service@sylvania.com). THIS IS THE EXCLUSIVE REMEDY AVAILABLE. LIABILITY FOR INCIDENTAL OR CONSEQUENTIAL DAMAGES ARE EXPRESSLY EXCLUDED. SOME JURISDICTIONS AND STATES DO NOT ALLOW THE EXCLUSION OR LIMITATION OF INCIDENTAL OR CONSEQUENTIAL DAMAGES, SO THE ABOVE LIMITATION OR EXCLUSION MAY NOT APPLY TO YOU. THIS WARRANTY GIVES YOU SPECIFIC LEGAL RIGHTS, AND YOU MAY ALSO HAVE OTHER RIGHTS WHICH VARY FROM STATE TO STATE OR PROVINCE TO PROVINCE.

LEDVANCE LLC  
1100 Tyrone Pike  
Versailles, KY 40383

SYLVANIA is a registered trademark.

INST1020  
4012205