

SYLVANIA Lamps

ECO LED T8 Type A

Application

SYLVANIA ECO LED T8 lamps deliver a quality LED light, at an affordable price. This long-lasting, economical line provides the perfect lighting solution for any budget for office, industrial or education.

Benefits and Features

- Compatible LED T8 with optimized glass optics and G13 medium bi-pin base
- Minimizes labor & recycling costs by operating on most popular existing ballasts
- No warm-up time, instant-on with full light output and stable lamp-to-lamp color
- No UV emission
- Approved for use with tube guards
- Maximize energy savings with occupancy sensors
- Up to 135 LPW (Lamp efficacy)
- CCT: 3500K, 4100K, 5000K
- CRI: 80
- Light Emitting Angle 340°; Beam Angle 220°

Electrical

- Compatible with instant start electronic T8 ballasts with input voltage of 120-277V and 347V
- Power factor >0.90
- THD <20%

Rated Life

- 50,000 hours (L₇₀)

Warranty

- 5 year limited lamp warranty (24/7 operation)

Ambient Operating Range

- -4°F to 113°F (-20°C to 45°C)

Max Case Temperature

- 158°F (70°C)



Wattage Comparison

| Traditional Source | Traditional System Wattage | LED System Wattage | Energy Savings |
|-------------------------------------|----------------------------|--------------------|----------------|
| 32W T8 Fluorescent with QHE2x32 ISN | 55 | 36 | 35% |

Certifications and Listings

- cULus 1993
- RoHS
- Lead Free
- Mercury Free
- FCC*
- NSF**

*FCC Title 47 CFR, Part 18, Non-Consumer
 **NSF/ANSI Standard 2 - Food Equipment

Installation

- Please refer to the Installation manual included inside the packaging and the applications information listed below for more information.



Specification Data

| | |
|-------------|------|
| Catalog # | Type |
| Project | |
| Comments | |
| Prepared by | |

Ordering Guide

| ECOLED | 16 | T8 | L48 | FG | 8 | XX | TYPEA |
|---------|--------------------------|----------------------|--------------------|--|---------------|---|---------------------------|
| ECO LED | Wattage 16 = 16 Watts | Lamp Type T8 = T8 | Length 48 = 48" | Material FG = Frosted Glass (non dimmable) | CRI 8 = 80 | Color Temperature 35 = 3500K 41 = 4100K 50 = 5000K | UL Type TYPEA = Type A |

Ordering Information

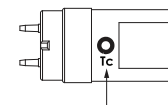
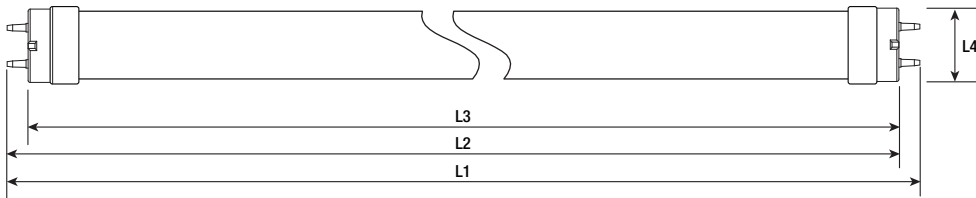
| Item Number | Ordering Abbreviation | Lamp Length | Lamp Power ¹ (W) | Typical Lumens ¹ (lm) | Color Temperature (CCT) | CRI | Life Rating (hrs) | Beam Angle (°) | Package Qty |
|-------------|-------------------------|-------------|-----------------------------|----------------------------------|-------------------------|-----|-------------------|----------------|-------------|
| 40966 | ECOLED16T8L48FG835TYPEA | 4ft | 16 | 2160 | 3500K | 80 | 50,000 | 220 | 25 |
| 40967 | ECOLED16T8L48FG841TYPEA | 4ft | 16 | 2160 | 4100K | 80 | 50,000 | 220 | 25 |
| 40968 | ECOLED16T8L48FG850TYPEA | 4ft | 16 | 2160 | 5000K | 80 | 50,000 | 220 | 25 |

1. Lamp Power and Lamp Lumens rated on QHE1x32T8/UNV ISN.

Specifications & Lighting Data

| Lamp | Ballast | System Power (W) | System Lumens (lm) | System Efficacy (lm/W) | No of Lamps |
|-------------------------|----------------------|------------------|--------------------|------------------------|-------------|
| ECOLED16T8L48FG8XXTYPEA | QHE2X32T8/UNV ISN-SC | 36 | 4320 | 120 | 2 |

Physical Information



Tc point location
next to label

| Lamp Description | L1 End of Base Pin to End of Opposite Pin End | L2 Base Face to Opposite Base Pin | L3 Base Face to Base Face | L4 Bulb Outside Diameter |
|------------------|---|---|---------------------------------|--------------------------------|
| ECO LED/L48 | 47.725"±0.055" (1212.2mm ±1.4mm) | 47.45"±0.05" (1205.25mm±1.25mm) | max 47.22" (1199.4mm) | 1.02"±0.08" (25.9mm±2.0mm) |

Application Information

1. Due to numerous ballast designs and topologies, this lamp should be tested on existing ballasts before mass quantities are installed.
2. Not intended for use with older dedicated voltage (120V or 277V) ballasts. These ballasts have electronic components that degrade over time and may become unsuitable for the new LED T8 lamp.
3. All installation, inspection, and maintenance of lighting fixtures should be done with the power to the fixture turned off. Lamps should be installed and operated in compliance with the National Electrical Code (NEC), Underwriters Laboratories Inc. (UL) requirements, and all applicable codes and regulations.
4. Insert and align tubes properly in lamp holders. Partial insertion results in a poor or intermittent electrical contact that can result in short lamp life and arcing. Arcing at the lamp holder can result in localized overheating.
5. These lamps are for Instant Start ballasts only. Use lamp holders with an internal shunt or ensure that lamp holders are wired in a shunt configuration.
6. For use with shunted sockets only.
7. De-lamp is not allowed for ISH ballasts. For approved ISN and ISL ballasts, de-lamp is allowed for only 1 lamp so long as the ballast factor remains below 1.20 (for example, 4 lamp ballast can de-lamp to 3 lamps).
8. Operating temperature range between -4°F and 113°F (-20°C and 45°C).
9. Suitable for use in dry and damp environments; cannot come in direct contact with water.
10. Maximum mounting distance between tube and ballast is 20 feet.
11. Please read all installation instructions before attempting installation.
12. For detailed warranty information, please see www.ledvanceUS.com/warranty.

LEDVANCE LLC
181 Ballardvale Street
Wilmington, MA 01887 USA
Phone 1-800-LIGHTBULB (1-800-544-4828)
www.ledvanceUS.com

SYLVANIA and LEDVANCE are registered trademarks.
All other trademarks are those of their respective owners.
Licensee of product trademark SYLVANIA in general lighting.
Specifications subject to change without notice.

