



Test Button and LED Indicator

Test Button functions

1. While main power is on:

A quick press of the test button, (<3 seconds), simulates the "line power outage" or "emergency mode". The light fixture will come on in this case - it will be running on battery power.

Pressing test button for 3-6 seconds puts the unit into the monthly self-check routine (approx. 3 minutes runtime). Press test button again anytime to stop the routine.

As the system runs its check on the battery power and circuit connections, the LED indicator will flash green @1 cycle/second.

Pressing test button for > 6 seconds puts the unit into the annual self-check routine. (up to 90 minutes runtime -

Note: The system will completely discharge the battery during this routine).

Press test button again anytime to stop the routine.

As the system runs its more detailed annual check on the battery power and circuit connections, the LED indicator will quickly flash green @3 cycle/second.

2. While in Emergency Status (line power outage):

Pressing test button for ≤ 6 seconds shuts off the unit. Press again to turn it back on.

Pressing test button for >6 seconds completely shuts off emergency output; in this state the system will not function unless power is restore.

LED indicator colors/functions

Red: Battery is charging.

Green: Battery at full charge.

Yellow: Check system - possible battery replacement needed or system maintenance required.

Green Flashing: Monthly or annual checking mode is running.

Off: Indicates a power outage. When the Battery Backup unit is in 'Emergency Mode' the LED indicator will be 'Off'. Minimum charge time: 24 hours.

FIVE YEAR LIMITED WARRANTY

5 Year Limited warranty

The purchased product is covered with a 5 year warranty in respect of any defect in materials or workmanship after purchase date. Warranty does not include batteries, which should be replaced every two years.

CLEANING AND STORAGE

- Clean with a soft or damp cloth. While cleaning with the damp cloth make sure the power is off.
- Do not clean with liquids or abrasives.
- Store at ambient temperature.

OPERATION MANUAL

EMERGENCY BATTERY BACKUP



Thank you for purchasing our product.

Before assembling please read this Operation Manual carefully and save in a safe place for future reference. Please note that all electrical connections must be in accordance with local and National Electrical Code standards as well as local building codes. In case you are not familiar with proper wiring connections and building codes, consult a qualified electrician.

Technical Data

Light Fixture Wattage: 13.5W, 18.5W

Input Voltage: 110V-120V

Input Current: 100mA

Installation Specifications:

3" or 4" Junction box

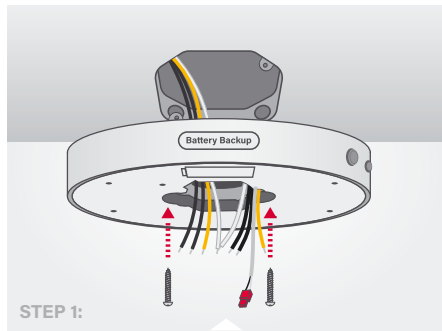
SAFETY RECOMMENDATION

1. The lighting shall be mounted at a height of maximum 4.0m.
2. Do not use outdoors.
3. Do not mount near gas or electric heaters. Do not let power supply cords touch hot surfaces.
4. Use caution when changing batteries – ΔTURN ALL POWER OFF, BOTH WALL SWITCH AND LINE POWER! Δ Use only designated battery as supplied with original unit or as listed for use with this product. Dispose of old battery in designated disposal location.
5. Equipment should be mounted in locations and at heights where it will not be subjected to tampering by unauthorized personnel.
6. This product is designed for use with the 7" Round Blink 'Pop 'n' Lock' series lighting. Must not be used with any other fixture.
7. Do not use this product for other than intended use. All serving should be performed by professional personnel.

SAVE THESE INSTRUCTIONS

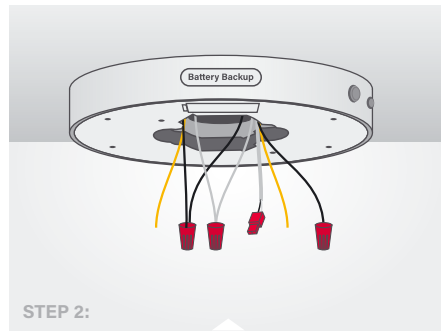
All serving should be performed by professional personnel.

INSTALLATION FOR SWITCHED POWER APPLICATIONS:



STEP 1:

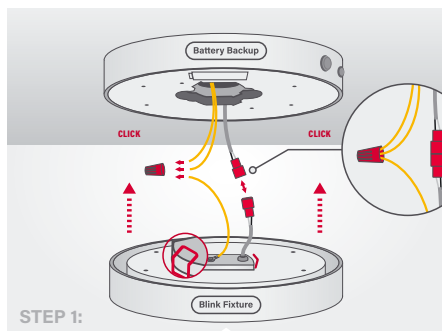
Ensure the junction box has an additional set of UNSWITCHED WIRES (continuous).
Screw the Emergency Backup unit up into the junction box using the 2 x M4 screws provided.



STEP 2:

Make electrical connections from blink led lighting fixture with the battery backup.
Connect the three (3) cables available for connection into junction box:
a) Connect the black wire marked "Continuous Main Power" to the constant (un-switched) black wire from the junction box. Connect the black wire marked "Switched Line" to the switched black wire in the junction box
b) Connect the "Neutral" white wire from the battery backup together with the neutral white wire coming from the junction box.
c) Connect the grounding wire from the battery backup unit.
Once all wires are connected together then push connected cables into the junction box leaving the cables out as shown for connection to the light fixture.

INSTALLATION FOR BLINK 3:



STEP 1:

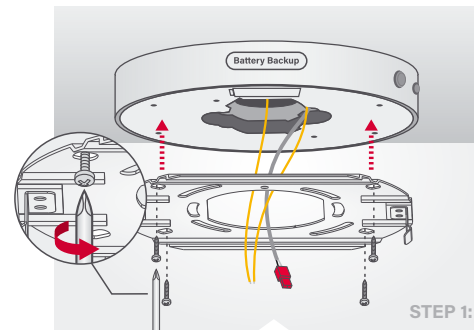
For Blink 3 fixture with Springs simply align two springs from fixture Battery backup. Push into Battery Backup unit to snap in place.



STEP 2:

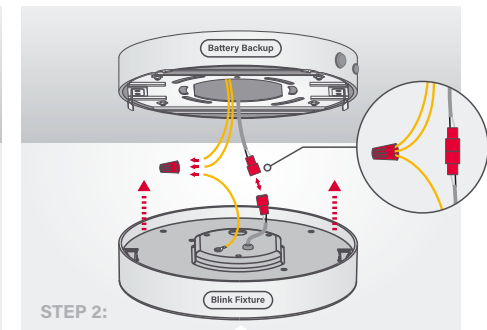
Thank you for installing safely. Enjoy your Emergency Lighting system!

INSTALLATION FOR BLINK 3.5:



STEP 1:

Mount bracket on battery backup unit by attaching 4 philips screws.



STEP 2:

Make electrical connections from the Blink LED Lighting fixture with the battery backup

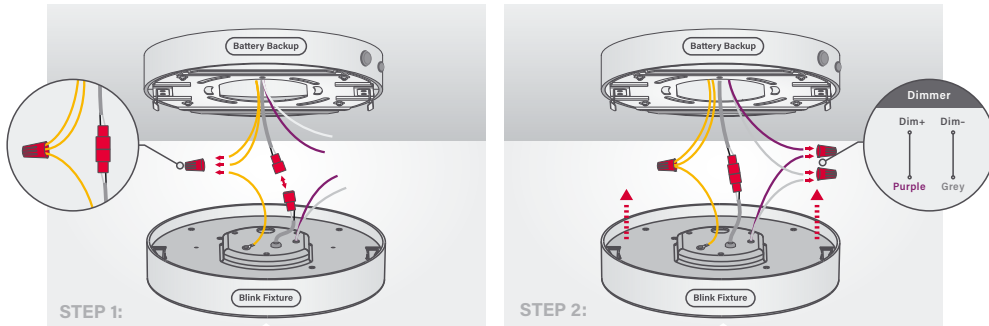
- a) Use the orange connector already supplied and affixed to the unit.
- b) Be sure to connect the ground wire coming from the lighting fixture.



STEP 3:

Pop 'n' Lock into place
Carefully push connections back in to the J-Box, Align the two clips and driver on the fixture body to the opening of the J-Box Mounting bracket.
Push to lock the fixture in place.

FOR 0-10V DIMMING
PLEASE REFER TO BELOW DIAGRAM:



STEP 1:

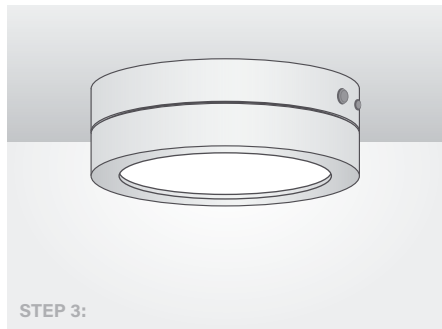
STEP 2:

Make electrical connections from the Blink LED Lighting fixture with the battery backup

- a) Use the orange connector already supplied and affixed to the unit.
- b) Be sure to connect the ground wire coming from the lighting fixture.

Make 0-10V dimming cable connections from Blink LED Lighting fixture with the cable from 0-10V dimmer

- a) Use wire nut connect Purple cable from lighting with DIM+ cable from 0-10V dimmer.
- b) Use wire nut connect Grey cable from lighting with DIM- cable from 0-10V dimmer.



STEP 3:

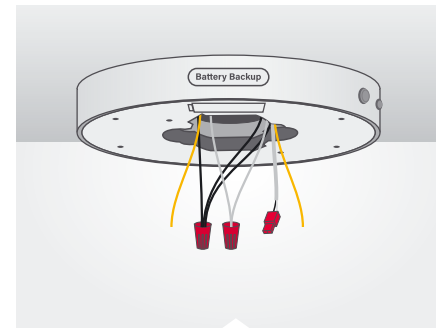
Thank you for installing safely. Enjoy your Emergency Lighting system!

FOR CONTINUOUS POWER APPLICATIONS:

If the battery backup is used for:

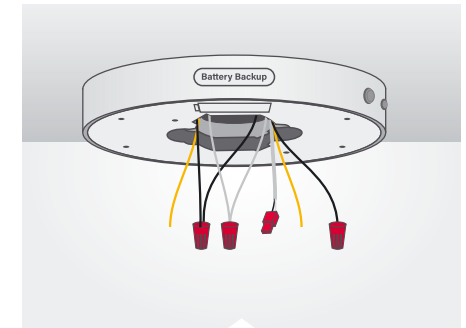
1. A system with 24/7 lighting OR
2. As a dedicated Emergency Light only, (light off in normal condition). Only continuous UNSWITCHED power is needed at the junction box – no need for switched wires.

Turn off / Disconnect power at Circuit breaker. Typical junction box wiring has only white & black switched wires controlled by wall switch for on/off or dimming.



Option 1

For Option 1 above as 24/7 lighting: Connect the two black wires (labeled as "Continuous Line Power" and "Switched Line") from the battery backup to the black line wire in the junction box and Connect the white ("Neutral") to white from the battery backup fixture to junction box wires (image below). Then screw the Emergency Backup unit up into the junction box using the 2 x M4 screws provided the go to STEP4.



Option 2

For Option 2 above as dedicated Emergency Light only: Connect the black wire (labeled as "Continuous Line Power") from the battery backup to the black line wire in the junction box and Connect the white ("Neutral") to white from the battery backup fixture to junction box wires (image below). Screw wire nut over the "Switched Line" and leave unconnected. Then screw the Emergency Backup unit up into the junction box using the 2 x M4 screws provided the go to STEP4.