



A CSW Industrials Company

INSTALLATION INSTRUCTIONS

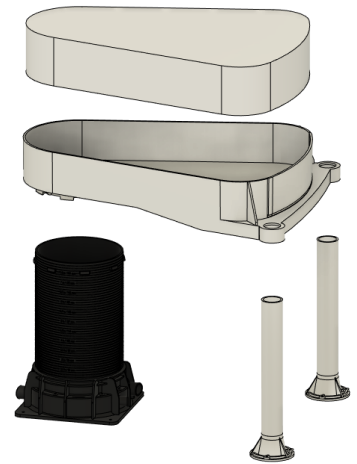
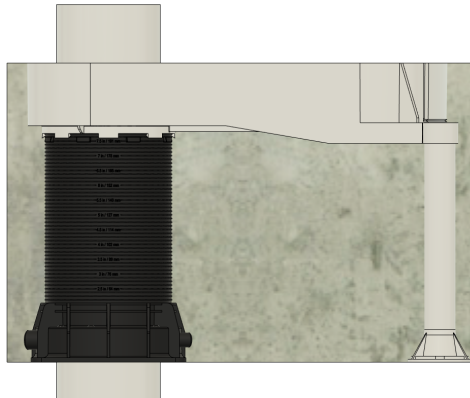
METACAULK® TUB BOX Firestop CID accessory for tub drains

Warning: Read instructions prior to installation. Failure to comply may result in damaged products during installation or failure during operation.

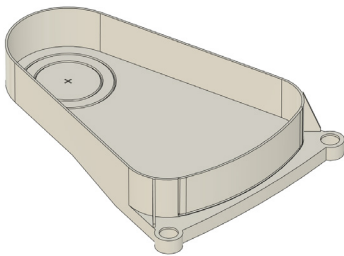
Caution: Do not use for wall applications

Note:

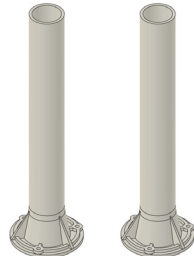
- i. Select the proper size of Metacaulk Cast-In-Place Device (CID) to fit the diameter of pipe used.
- ii. Please refer to local codes prior to installation.
- iii. Make sure annular space is within the limits set by the tested conditions. Layout CID on wood forms prior to the concrete being poured.
- iv. Before pouring concrete, place foam inside the Tub to prevent flow of concrete into Tub during pour.



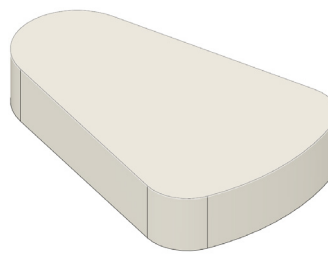
Parts



1. Tub



2. Legs (2)



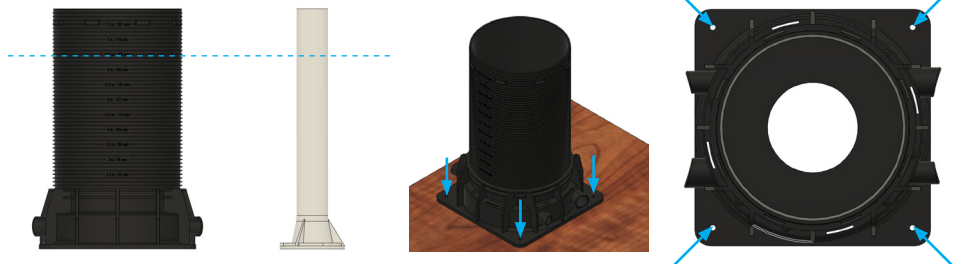
3. Foam



4. CID Device – 2" or 3"

Step 1

Cut the CID and Legs to the desired height. Secure the CID to floor using nails or screws.

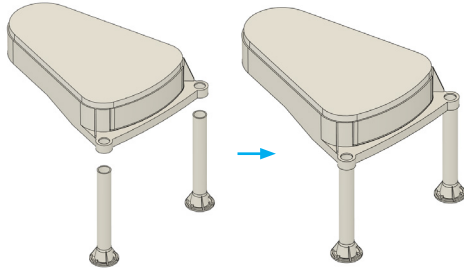


METACAULK® TUB BOX

Firestop CID accessory for tub drains

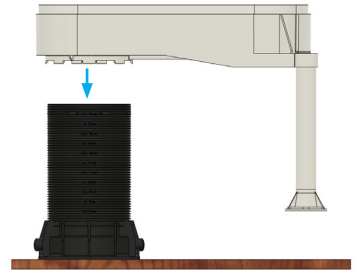
Step 2

Using PVC compatible adhesive, RectorSeal Gene™ 404, glue Legs into Tub sockets as shown.



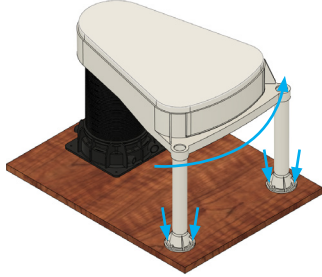
Step 3

Connect the Tub box to the CID by aligning clips on the bottom of the Tub with the CID and pushing down into place.



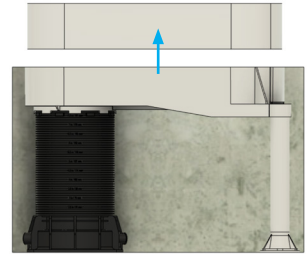
Step 4

Rotate the assembly to desired position. Fix Legs using screws or hammer and nails. Use of a nail gun is not recommended.



Step 5

With Foam inside Tub, pour concrete. Concrete layer height should not exceed height of the Tub. Once the concrete is cured, remove Foam.



Step 6 (optional)

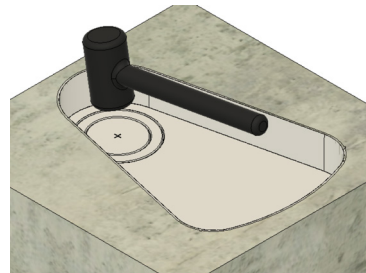
For optimal seal, use RectorSeal sealants to fill the edges between concrete and tub side walls.

Recommended RectorSeal Sealants:

1. Metacaulk 150+ firestop sealant
2. Metacaulk 1000 firestop sealant
3. Metacaulk 1200 firestop sealant
4. Metacaulk 835+ firestop silicone sealant

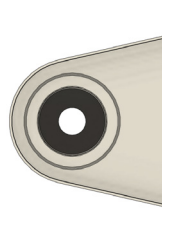
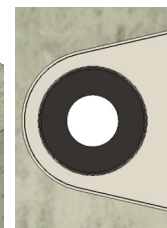
Step 7

Knock out the disk(s) on tub using a mallet or hammer, opening the passage for pipes to pass through.



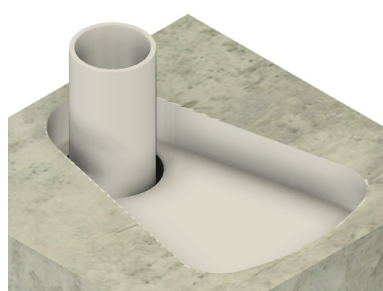
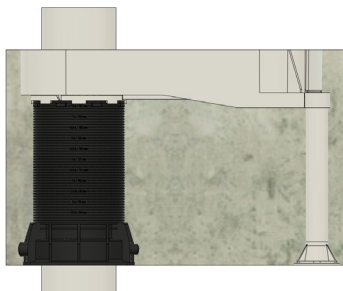
3" CID

2" CID



Step 8

Insert the pipe and pipe fittings through the passage. Metacaulk Cast-In-Place Tub Box is ready to use.



To achieve W-rating (optional)

Insert packing material and apply caulk within device to finish flush with top surface of Tub. The minimum thickness and packing material shall conform to the following table:

RectorSeal Sealant	Min. Thickness inch (mm)	Device Size inch (mm)	Packing Material
Metacaulk 1200 or Metacaulk 835+	1/4 (6)	2 (51) or 3 (76)	Min. 3 in (76 mm) thickness of min. 4.0 pcf (64 kg/m3) mineral wool
Metacaulk 1200 or Metacaulk 150+	1/2 (13)	2 (51) or 3 (76)	Foam backer rod
Metacaulk 1000	1/2 (13)	2 (51) or 3 (76)	Min. 4 in (102 mm) thickness of min. 4.0 pcf (64 kg/m3) mineral wool

Assembled in USA by

RectorSeal, LLC

2601 Spenwick Drive • Houston, TX 77055, USA • 800-231-3345 • Fax 800-441-0051 • rectorseal.com

A CSW Industrials Company. RectorSeal, the logos and other trademarks are property of RectorSeal, LLC, its affiliates or its licensor's and are protected by copyright, trademark and other intellectual property laws, and may not be used without permission. RectorSeal reserves the right to change specifications without prior notice. ©2020 RectorSeal. All rights reserved. R50733-1220