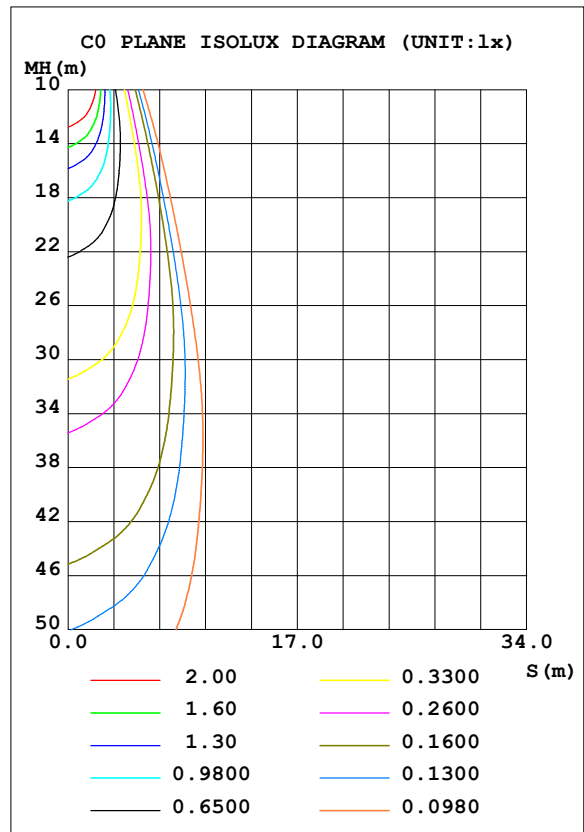
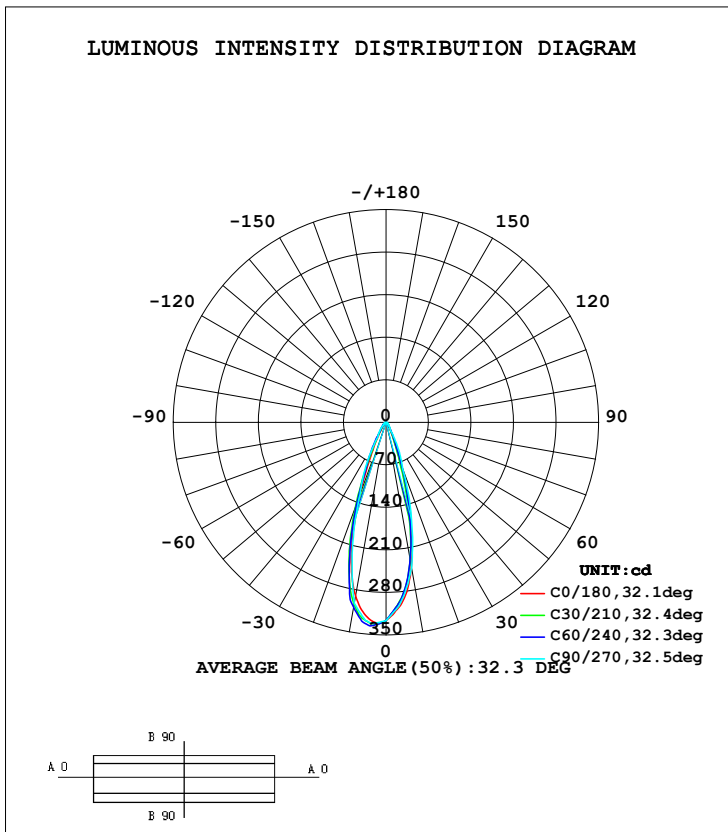


LUMINAIRE PHOTOMETRIC TEST REPORT

Test:U:0.0959V I:0A P:0W PF:0 Lamp Flux:123.761x1 lm		
NAME: REL21.22.23 (Single head)	TYPE:	WEIGHT:
SPEC.:	DIM.:	SERIAL No.:2020030701
	SUR.:0.026	PROTECTION ANGLE:

DATA OF LAMP		PHOTOMETRIC DATA			
MODEL	REL21.22.23 (Single head)	I _{max} (cd)	335.9	S/MH (C0/180)	0.56
NOMINAL POWER (W)		LOR (%)	100.0	S/MH (C90/270)	0.58
RATED VOLTAGE (V)	3.95	TOTAL FLUX (lm)	123.76	η UP, DN (C0-180)	0.0, 44.7
NOMINAL FLUX (lm)	123.761	CIE CLASS	DIRECT	η UP, DN (C180-360)	0.0, 55.3
LAMPS INSIDE	1	η up (%)	0.0	CIBSE SHR NOM	0.50
TEST VOLTAGE (V)	3.95	η down (%)	100.0	CIBSE SHR MAX	0.55



C Range: 0 - 360DEG
 C Interval: 5.0DEG
 Test Speed: HIGH
 Temperature: 25.3DEG
 Operators: WLM
 Test Date: 2020-03-07

γ Range: 0 - 90DEG
 γ Interval: 0.5DEG
 Test System: EVERFINE GO-2000H_V1 SYSTEM V2.0.287
 Humidity: 65.0%
 Test Distance: 13.669m [K=1.0000]
 Remarks:

ZONAL FLUX DIAGRAM

ZONAL FLUX DIAGRAM:

γ	C0	C45	C90	C135	C180	C225	C270	C315	γ	Φ zone	Φ total	%lum,lamp
5	298.9	290.0	294.9	306.2	324.6	333.9	330.0	312.3	0- 5	7.592	7.592	6.13,6.13
10	241.3	227.1	242.8	259.3	290.1	307.4	302.6	263.8	5- 10	20.65	28.24	22.8,22.8
15	150.9	141.5	162.1	186.6	220.8	242.5	214.1	181.6	10- 15	26.76	55.00	44.4,44.4
20	68.24	71.01	81.41	105.3	129.1	146.0	125.7	98.16	15- 20	23.30	78.30	63.3,63.3
25	28.27	29.04	47.85	45.32	55.17	70.64	76.38	43.34	20- 25	14.96	93.26	75.4,75.4
30	13.10	14.35	14.29	20.48	26.27	33.77	27.05	20.00	25- 30	8.542	101.8	82.3,82.3
35	8.811	9.565	11.26	12.27	13.65	17.41	20.17	10.67	30- 35	4.776	106.6	86.1,86.1
40	6.589	6.946	8.225	8.248	9.193	9.634	13.29	7.211	35- 40	3.497	110.1	88.9,88.9
45	5.291	5.640	5.422	6.687	6.991	7.655	7.006	5.860	40- 45	2.797	112.9	91.2,91.2
50	4.399	4.606	4.459	5.512	5.568	6.092	5.542	4.712	45- 50	2.311	115.2	93.1,93.1
55	3.669	3.759	3.726	4.486	4.481	4.811	4.681	3.793	50- 55	2.041	117.2	94.7,94.7
60	2.918	3.102	2.993	3.639	3.551	3.956	3.819	3.110	55- 60	1.776	119.0	96.2,96.2
65	2.191	2.439	2.510	2.825	2.841	3.174	3.015	2.487	60- 65	1.505	120.5	97.4,97.4
70	1.493	1.807	2.028	2.115	2.090	2.402	2.210	1.859	65- 70	1.201	121.7	98.3,98.3
75	0.5813	1.204	1.564	1.565	1.437	1.616	1.741	1.172	70- 75	0.8839	122.6	99.1,99.1
80	0.0752	0.7668	1.100	1.071	0.9217	1.141	1.271	0.8100	75- 80	0.6014	123.2	99.5,99.5
85	0.0429	0.4089	0.6356	0.6068	0.4714	0.6951	0.8019	0.5154	80- 85	0.3775	123.6	99.8,99.8
90	0.0322	0.0751	0.1717	0.1502	0.0215	0.2575	0.3326	0.2360	85- 90	0.1938	123.8	100,100
95									90- 95			
100									95-100			
105									100-105			
110									105-110			
115									110-115			
120									115-120			
125									120-125			
130									125-130			
135									130-135			
140									135-140			
145									140-145			
150									145-150			
155									150-155			
160									155-160			
165									160-165			
170									165-170			
175									170-175			
180									175-180			
DEG	LUMINOUS INTENSITY:cd								UNIT:lm			

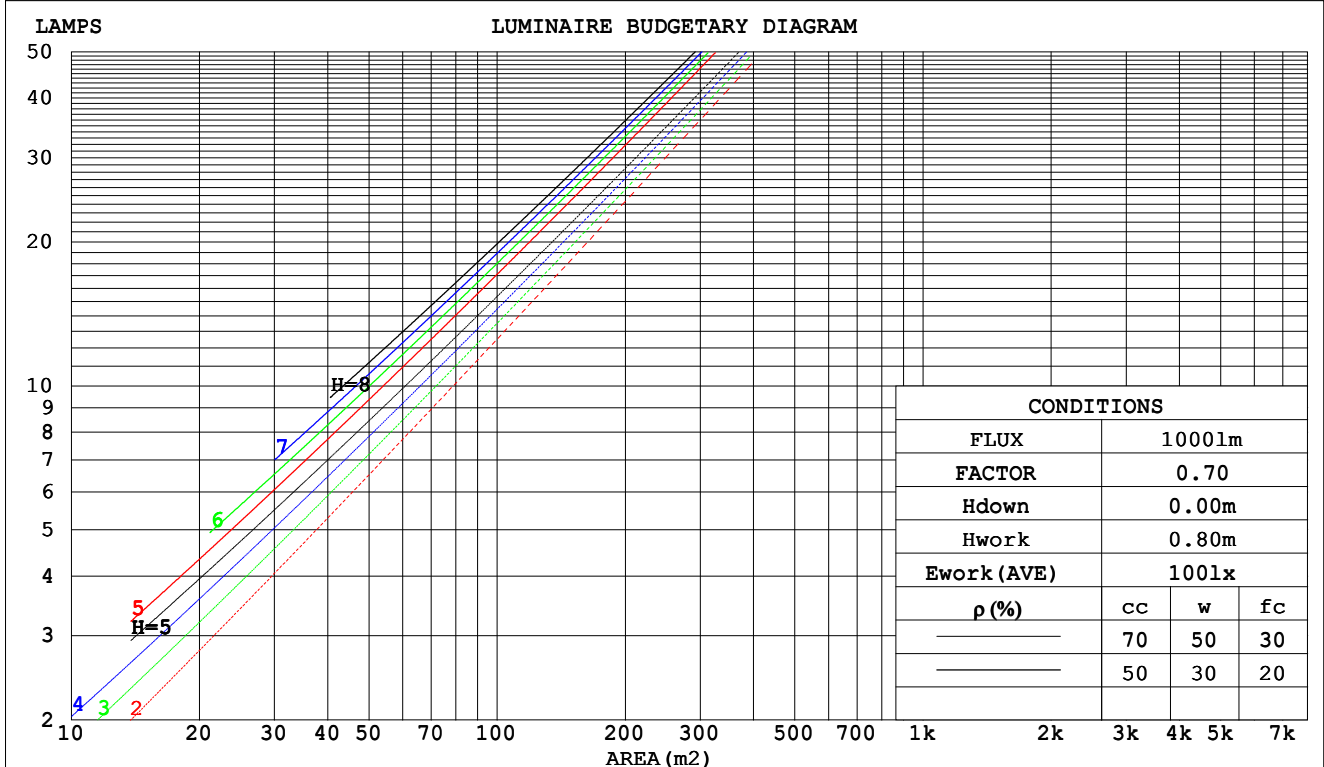
C Range: 0 - 360DEG
 C Interval: 5.0DEG
 Test Speed: HIGH
 Temperature:25.3DEG
 Operators:WLM
 Test Date:2020-03-07

γ Range: 0 - 90DEG
 γ Interval: 0.5DEG
 Test System:EVERFINE GO-2000H_V1 SYSTEM V2.0.287
 Humidity:65.0%
 Test Distance:13.669m [K=1.0000]
 Remarks:

CU AND LUMINAIRE BUDGETARY ESTIMATE DIAGRAM

Test:U:0.0959V I:0A P:0W PF:0 Lamp Flux:123.761x1 lm		
NAME: REL21.22.23 (Single head)	TYPE:	WEIGHT:
SPEC.:	DIM.:	SERIAL No.:2020030701
	SUR.:0.026	PROTECTION ANGLE:

ρcc	80%			70%			50%			30%			10%			0
ρw	50%	30%	10%	50%	30%	10%	50%	30%	10%	50%	30%	10%	50%	30%	10%	0
ρfc	20%			20%			20%			20%			20%			0
RCR	RCR:Room Cavity Ratio															
	Coefficients of Utilization(CU)															
0.0	1.19	1.19	1.19	1.16	1.16	1.16	1.11	1.11	1.11	1.06	1.06	1.06	1.02	1.02	1.02	1.00
1.0	1.11	1.09	1.06	1.09	1.07	1.05	1.05	1.03	1.01	1.01	.98	.98	.98	.97	.96	.94
2.0	1.04	1.00	.97	1.02	.99	.96	.99	.96	.94	.96	.94	.92	.93	.92	.90	.88
3.0	.98	.93	.90	.97	.92	.89	.94	.90	.88	.92	.89	.86	.89	.87	.85	.83
4.0	.93	.88	.84	.92	.87	.83	.89	.85	.82	.88	.84	.81	.86	.83	.80	.79
5.0	.88	.83	.79	.87	.82	.79	.85	.81	.78	.84	.80	.77	.82	.79	.77	.75
6.0	.84	.79	.75	.83	.78	.75	.82	.77	.74	.80	.77	.74	.79	.76	.73	.72
7.0	.80	.75	.71	.80	.75	.71	.78	.74	.71	.77	.73	.70	.76	.73	.70	.69
8.0	.77	.72	.68	.76	.72	.68	.75	.71	.68	.74	.70	.68	.74	.70	.67	.66
9.0	.74	.69	.65	.74	.69	.65	.73	.68	.65	.72	.68	.65	.71	.67	.65	.64
10.0	.71	.66	.63	.71	.66	.63	.70	.66	.63	.69	.65	.63	.69	.65	.62	.61



C Range: 0 - 360DEG
 C Interval: 5.0DEG
 Test Speed: HIGH
 Temperature:25.3DEG
 Operators:WLM
 Test Date:2020-03-07

γ Range: 0 - 90DEG
 γ Interval: 0.5DEG
 Test System:EVERFINE GO-2000H_V1 SYSTEM V2.0.287
 Humidity:65.0%
 Test Distance:13.669m [K=1.0000]
 Remarks:

WEC AND CCEC

Test:U:0.0959V I:0A P:0W PF:0 Lamp Flux:123.761x1 lm		
NAME:REL21.22.23 (Single head)	TYPE:	WEIGHT:
SPEC.:	DIM.:	SERIAL No.:2020030701
	SUR.:0.026	PROTECTION ANGLE:

ρ_{CC}	80%			70%			50%			30%			10%			0
ρ_w	50%	30%	10%	50%	30%	10%	50%	30%	10%	50%	30%	10%	50%	30%	10%	0
ρ_{fc}	20%			20%			20%			20%			20%			0
RCR	RCR:Room Cavity Ratio						Wall Exitance Coefficients(WEC)									
0.0																
1.0	.174	.099	.031	.167	.095	.030	.154	.089	.028	.143	.082	.026	.132	.077	.025	
2.0	.162	.089	.027	.156	.086	.027	.146	.081	.025	.136	.076	.024	.127	.072	.023	
3.0	.151	.080	.024	.146	.078	.024	.137	.074	.023	.129	.071	.022	.122	.067	.021	
4.0	.141	.073	.022	.137	.072	.021	.130	.069	.021	.123	.066	.020	.116	.063	.019	
5.0	.133	.068	.020	.129	.066	.019	.123	.064	.019	.116	.061	.018	.111	.059	.018	
6.0	.125	.063	.018	.122	.062	.018	.116	.060	.017	.111	.058	.017	.106	.056	.017	
7.0	.118	.059	.017	.116	.058	.016	.111	.056	.016	.106	.054	.016	.102	.053	.016	
8.0	.112	.055	.015	.110	.054	.015	.106	.053	.015	.101	.051	.015	.097	.050	.015	
9.0	.107	.052	.014	.105	.051	.014	.101	.050	.014	.097	.049	.014	.094	.048	.014	
10.0	.102	.049	.014	.100	.048	.013	.097	.047	.013	.093	.046	.013	.090	.045	.013	

ρ_{CC}	80%			70%			50%			30%			10%			0
ρ_w	50%	30%	10%	50%	30%	10%	50%	30%	10%	50%	30%	10%	50%	30%	10%	0
ρ_{fc}	20%			20%			20%			20%			20%			0
RCR	RCR:Room Cavity Ratio						Ceiling Cavity Exitance Coefficients(CCEC)									
0.0	.190	.190	.190	.163	.163	.163	.111	.111	.111	.064	.064	.064	.020	.020	.020	
1.0	.171	.157	.145	.146	.135	.125	.100	.093	.086	.058	.054	.050	.018	.017	.016	
2.0	.155	.133	.114	.133	.114	.098	.091	.079	.069	.052	.046	.040	.017	.015	.013	
3.0	.142	.113	.091	.121	.098	.079	.083	.068	.055	.048	.040	.033	.015	.013	.011	
4.0	.130	.099	.074	.112	.085	.065	.077	.059	.046	.044	.035	.027	.014	.011	.009	
5.0	.121	.087	.062	.104	.075	.054	.071	.052	.038	.041	.031	.022	.013	.010	.007	
6.0	.112	.077	.052	.096	.067	.045	.067	.047	.032	.039	.027	.019	.012	.009	.006	
7.0	.105	.069	.044	.090	.060	.039	.062	.042	.027	.036	.025	.016	.012	.008	.005	
8.0	.099	.063	.038	.085	.054	.033	.059	.038	.024	.034	.023	.014	.011	.007	.005	
9.0	.093	.057	.033	.080	.050	.029	.056	.035	.021	.032	.021	.012	.010	.007	.004	
10.0	.088	.053	.029	.076	.046	.025	.053	.032	.018	.031	.019	.011	.010	.006	.004	

C Range: 0 - 360DEG
 C Interval: 5.0DEG
 Test Speed: HIGH
 Temperature:25.3DEG
 Operators:WLM
 Test Date:2020-03-07

γ Range: 0 - 90DEG
 γ Interval: 0.5DEG
 Test System:EVERFINE GO-2000H_V1 SYSTEM V2.0.287
 Humidity:65.0%
 Test Distance:13.669m [K=1.0000]
 Remarks:

UGR(Unified Glare Rating) Table

Test:U:0.0959V I:0A P:0W PF:0 Lamp Flux:123.761x1 lm										
NAME: REL21.22.23 (Single head)					TYPE:			WEIGHT:		
SPEC.:					DIM.:			SERIAL No.:2020030701		
					SUR.:0.026			PROTECTION ANGLE:		
ceiling/cavity	0.7	0.7	0.5	0.5	0.3	0.7	0.7	0.5	0.5	0.3
walls	0.5	0.3	0.5	0.3	0.3	0.5	0.3	0.5	0.3	0.3
working plane	0.2	0.2	0.2	0.2	0.2	0.2	0.2	0.2	0.2	0.2
Room dimensions	Viewed crosswise					Viewed endwise				
x = 2H y = 2H	10.8	11.7	11.1	11.8	12.0	11.4	12.2	11.6	12.4	12.5
3H	11.9	12.7	12.2	12.9	13.1	12.6	13.4	12.8	13.6	13.8
4H	12.1	12.8	12.3	13.0	13.2	13.2	13.9	13.5	14.1	14.4
6H	12.0	12.7	12.3	12.9	13.2	13.8	14.5	14.1	14.7	15.0
8H	12.0	12.6	12.3	12.9	13.1	14.1	14.7	14.4	15.0	15.2
12H	11.9	12.6	12.2	12.8	13.1	14.3	14.9	14.6	15.2	15.5
4H 2H	11.4	12.2	11.7	12.4	12.6	11.9	12.6	12.1	12.8	13.0
3H	12.6	13.3	13.0	13.6	13.8	13.3	13.9	13.6	14.2	14.5
4H	12.9	13.5	13.2	13.8	14.1	14.0	14.6	14.3	14.9	15.2
6H	12.8	13.3	13.2	13.7	14.0	14.7	15.2	15.1	15.6	15.9
8H	12.8	13.3	13.2	13.6	14.0	15.0	15.5	15.4	15.9	16.2
12H	12.7	13.2	13.1	13.5	13.9	15.3	15.8	15.8	16.2	16.6
8H 4H	13.1	13.6	13.5	14.0	14.3	14.1	14.6	14.5	15.0	15.4
6H	13.1	13.5	13.5	13.9	14.3	15.0	15.4	15.5	15.8	16.2
8H	13.0	13.4	13.5	13.8	14.3	15.5	15.8	15.9	16.2	16.7
12H	13.0	13.3	13.4	13.7	14.2	15.9	16.2	16.4	16.6	17.1
12H 4H	13.1	13.6	13.5	14.0	14.4	14.1	14.6	14.5	14.9	15.3
6H	13.2	13.6	13.6	14.0	14.4	15.0	15.4	15.5	15.8	16.3
8H	13.2	13.5	13.6	13.9	14.4	15.5	15.8	16.0	16.3	16.7
Variations with the observer position at spacings:										
S = 1.0H	+ 0.4 / - 0.5					+ 0.2 / - 0.3				
1.5H	+ 0.1 / - 0.2					+ 0.3 / - 0.2				
2.0H	+ 0.5 / - 0.5					+ 0.3 / - 0.4				

CIE Pub.117 Corrected 123.8 lm Total Lamp Luminous Flux. (8log(F/F0) = -7.3)

C Range: 0 - 360DEG
C Interval: 5.0DEG
Test Speed: HIGH
Temperature:25.3DEG
Operators:WLM
Test Date:2020-03-07

γ Range: 0 - 90DEG
 γ Interval: 0.5DEG
Test System:EVERFINE GO-2000H_V1 SYSTEM V2.0.287
Humidity:65.0%
Test Distance:13.669m [K=1.0000]
Remarks:

UTILIZATION FACTORS TABLE

Test:U:0.0959V I:0A P:0W PF:0 Lamp Flux:123.761x1 lm		
NAME: REL21.22.23 (Single head)	TYPE:	WEIGHT:
SPEC.:	DIM.:	SERIAL No.:2020030701
	SUR.:0.026	PROTECTION ANGLE:

REFLECTANCE										
Ceiling	0.8	0.8	0.8	0.7	0.7	0.7	0.5	0.5	0.5	0
Walls	0.7	0.5	0.3	0.7	0.5	0.3	0.7	0.5	0.3	0
Working plane	0.2	0.2	0.2	0.2	0.2	0.2	0.2	0.2	0.2	0
ROOM INDEX	UTILIZATION FACTORS (PERCENT) $k(RI) \times RCR = 5$									
$k = 0.60$	85	78	74	84	78	74	83	77	74	70
0.80	92	86	82	92	86	82	90	85	81	77
1.00	97	91	87	96	90	87	94	90	86	82
1.25	101	95	92	100	95	91	98	94	90	86
1.50	104	99	95	103	98	95	100	97	94	89
2.00	107	102	99	106	101	98	103	99	97	91
2.50	109	105	101	107	104	101	104	101	99	92
3.00	111	107	104	109	106	103	105	103	101	94
4.00	113	110	107	111	108	106	107	105	103	96
5.00	114	112	110	112	110	108	108	107	105	97
ROOM INDEX	UF(total)									Direct
According to DIN EN 13032-2 2004			Suspended				SHRNOM = SHRNOM = 1.25			

C Range: 0 - 360DEG
C Interval: 5.0DEG
Test Speed: HIGH
Temperature:25.3DEG
Operators:WLM
Test Date:2020-03-07

γ Range: 0 - 90DEG
 γ Interval: 0.5DEG
Test System:EVERFINE GO-2000H_V1 SYSTEM V2.0.287
Humidity:65.0%
Test Distance:13.669m [K=1.0000]
Remarks:

ISOCANDELA DIAGRAM

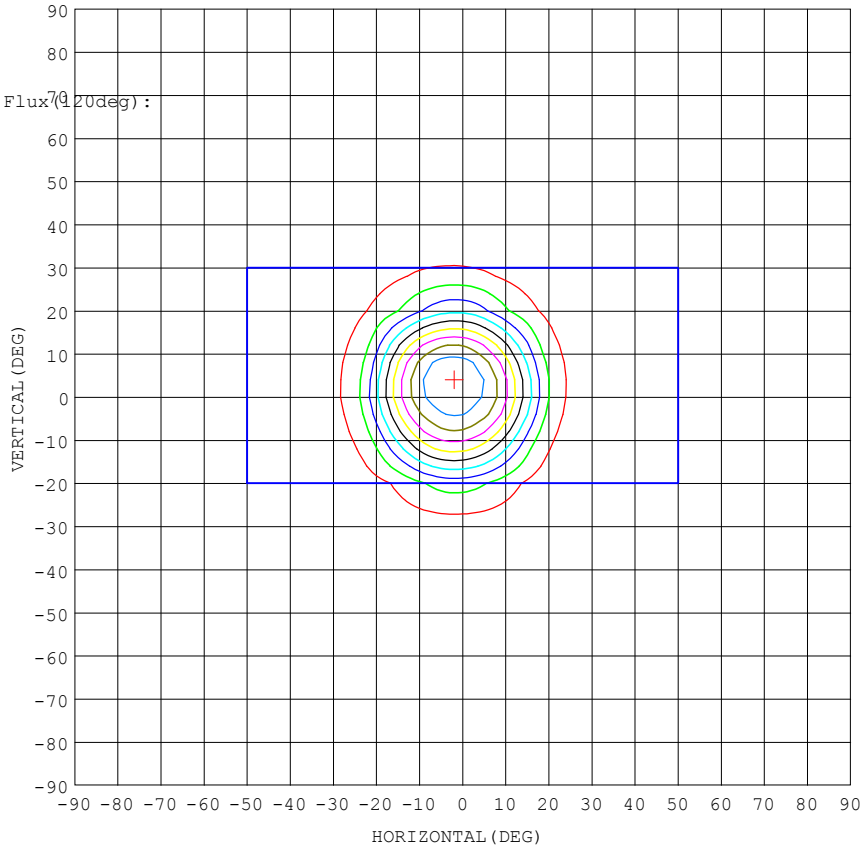
Test:U:0.0959V I:0A P:0W PF:0 Lamp Flux:123.761x1 lm		
NAME:REL21.22.23 (Single head)	TYPE:	WEIGHT:
SPEC.:	DIM.:	SERIAL No.:2020030701
	SUR.:0.026	PROTECTION ANGLE:

Conical surface Flux(90deg):

112.87 lm
 %lum = 91.2%
 %lamp = 91.2%

Conical surface Flux(70deg):

119 lm
 %lum = 96.2%
 %lamp = 96.2%



MAX = 336.11
 MIN = 3.5413
 AVG = 67.829
 AVG/MAX = 0.20
 MIN/MAX = 0.01

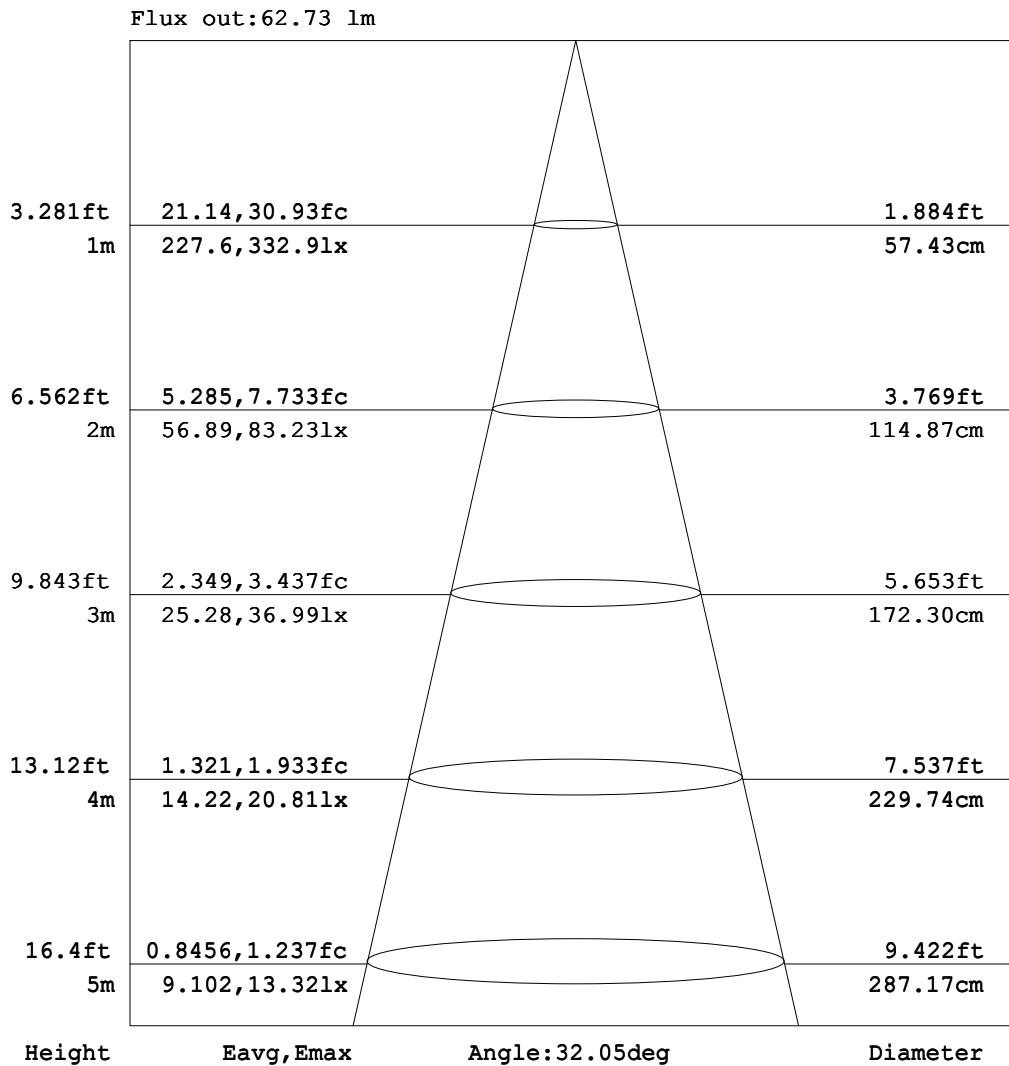
Imax:336.1 (H=2.0,V4.0)
 (At:C=240.0,Gamma=4.5)
 UNIT: cd

C Range: 0 - 360DEG
 C Interval: 5.0DEG
 Test Speed: HIGH
 Temperature:25.3DEG
 Operators:WLM
 Test Date:2020-03-07

γ Range: 0 - 90DEG
 γ Interval: 0.5DEG
 Test System:EVERFINE GO-2000H_V1 SYSTEM V2.0.287
 Humidity:65.0%
 Test Distance:13.669m [K=1.0000]
 Remarks:

AAI Figure

Test:U:0.0959V I:0A P:0W PF:0 Lamp Flux:123.761x1 lm		
NAME:REL21.22.23 (Single head)	TYPE:	WEIGHT:
SPEC.:	DIM.:	SERIAL No.:2020030701
	SUR.:0.026	PROTECTION ANGLE:



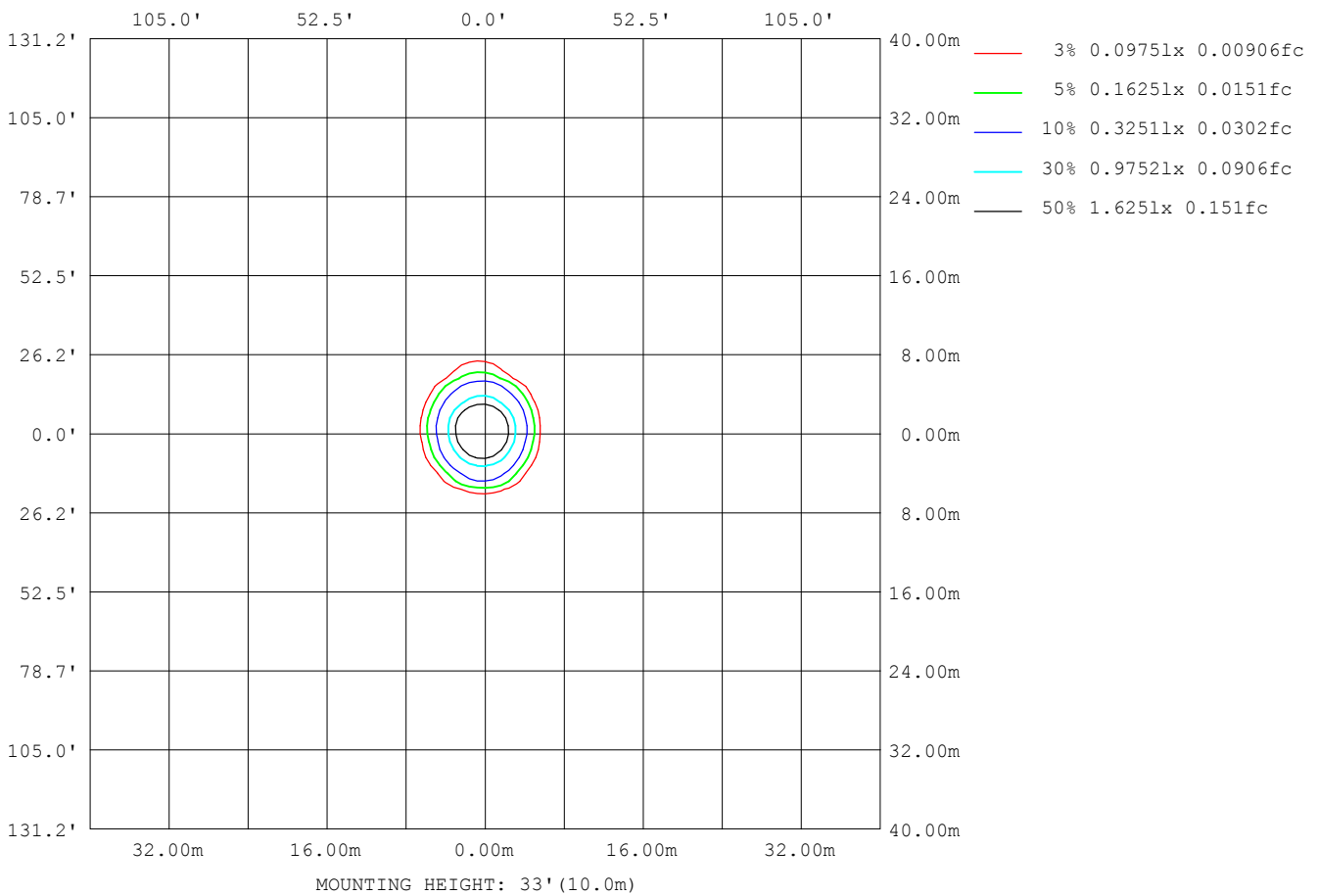
Note:The Curves indicate the illuminated area and the average illumination when the luminaire is at different distance.

C Range: 0 - 360DEG
 C Interval: 5.0DEG
 Test Speed: HIGH
 Temperature:25.3DEG
 Operators:WLM
 Test Date:2020-03-07

γ Range: 0 - 90DEG
 γ Interval: 0.5DEG
 Test System:EVERFINE GO-2000H_V1 SYSTEM V2.0.287
 Humidity:65.0%
 Test Distance:13.669m [K=1.0000]
 Remarks:

ISOLUX DIAGRAM

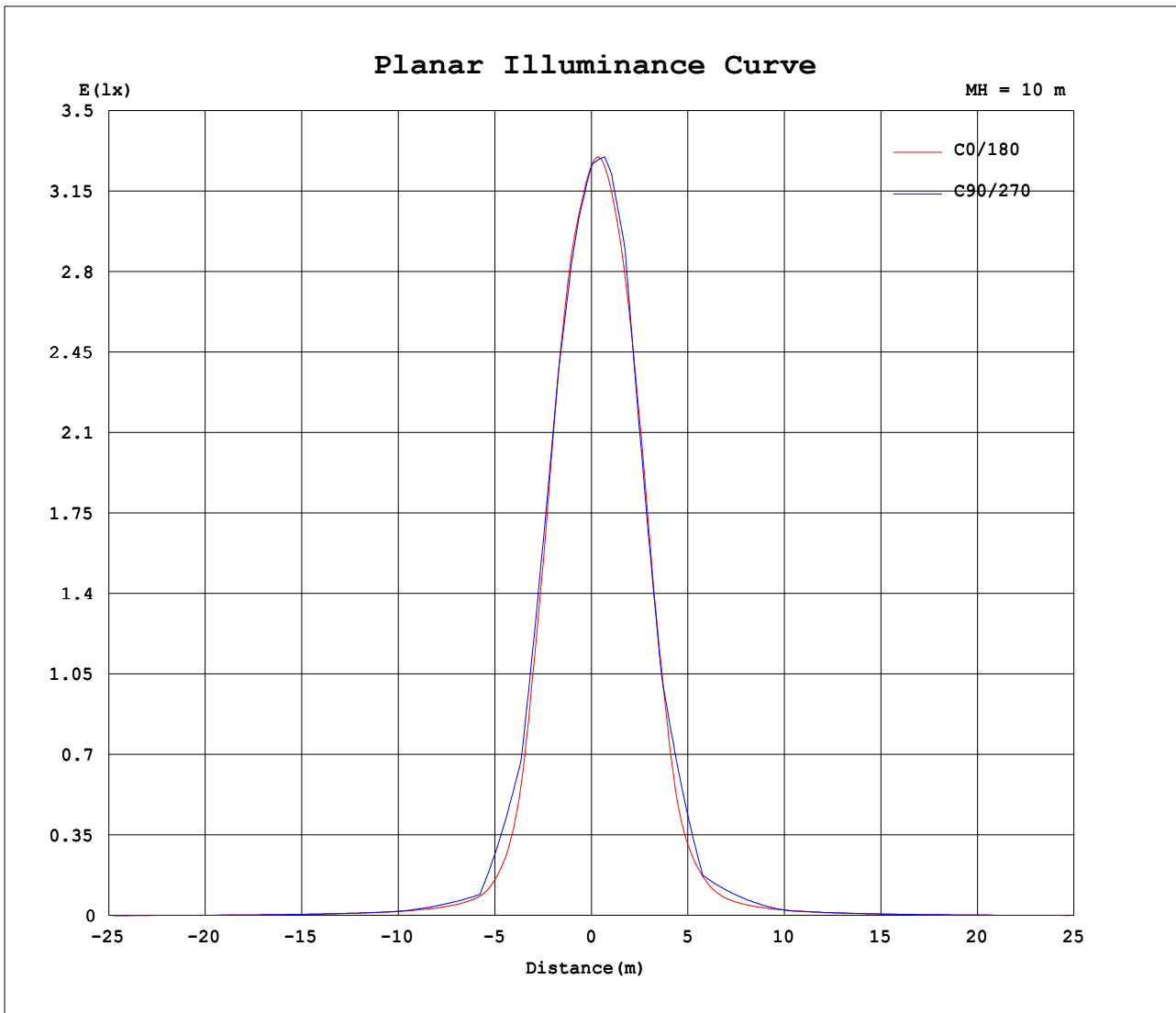
Test:U:0.0959V I:0A P:0W PF:0 Lamp Flux:123.761x1 lm		
NAME: REL21.22.23 (Single head)	TYPE:	WEIGHT:
SPEC.:	DIM.:	SERIAL No.:2020030701
	SUR.:0.026	PROTECTION ANGLE:



C Range: 0 - 360DEG
 C Interval: 5.0DEG
 Test Speed: HIGH
 Temperature:25.3DEG
 Operators:WLM
 Test Date:2020-03-07

γ Range: 0 - 90DEG
 γ Interval: 0.5DEG
 Test System:EVERFINE GO-2000H_V1 SYSTEM V2.0.287
 Humidity:65.0%
 Test Distance:13.669m [K=1.0000]
 Remarks:

Planar Illuminance Curve



C Range: 0 - 360DEG
C Interval: 5.0DEG
Test Speed: HIGH
Temperature: 25.3DEG
Operators: WLM
Test Date: 2020-03-07

γ Range: 0 - 90DEG
 γ Interval: 0.5DEG
Test System: EVERFINE GO-2000H_V1 SYSTEM V2.0.287
Humidity: 65.0%
Test Distance: 13.669m [K=1.0000]
Remarks:

LUMINOUS DISTRIBUTION INTENSITY DATA

Test:U:0.0959V I:0A P:0W PF:0 Lamp Flux:123.761x1 lm		
NAME:REL21.22.23 (Single head)	TYPE:	WEIGHT:
SPEC.:	DIM.:	SERIAL No.:2020030701
	SUR.:0.026	PROTECTION ANGLE:

Table--1

UNIT: cd

γ (DEG)\C (DEG)	0	5	10	15	20	25	30	35	40	45	50	55	60	65	70	75	80	85	90
0	326	326	326	326	326	326	326	326	326	326	326	326	326	326	326	326	326	326	326
5	299	297	295	293	292	291	290	290	290	290	290	291	291	291	292	292	293	294	295
10	241	237	234	232	231	231	229	229	228	227	227	228	229	231	233	235	238	240	243
15	151	147	144	143	141	140	139	139	140	141	144	146	149	151	153	155	157	160	162
20	68.2	65.0	63.6	62.7	61.8	60.8	60.4	63.5	67.1	71.0	74.0	75.6	76.6	77.1	77.4	78.0	78.8	79.8	81.4
25	28.3	27.2	26.7	26.1	25.6	25.8	26.5	27.4	28.5	29.0	28.4	30.1	33.7	37.2	40.1	42.7	44.9	46.5	47.8
30	13.1	13.0	13.0	12.9	12.9	13.2	13.7	13.9	13.6	14.3	15.6	16.8	17.7	18.3	18.1	17.1	15.8	14.7	14.3
35	8.81	8.78	8.79	8.81	8.80	8.90	9.04	9.20	9.41	9.56	9.61	9.36	9.84	10.2	10.5	10.8	11.1	11.2	11.3
40	6.59	6.57	6.65	6.68	6.68	6.70	6.84	6.98	6.98	6.95	7.14	7.36	7.62	7.98	8.13	8.22	8.27	8.24	8.23
45	5.29	5.24	5.37	5.33	5.38	5.41	5.47	5.60	5.66	5.64	5.67	5.77	5.90	6.03	6.02	5.80	5.69	5.52	5.42
50	4.40	4.31	4.37	4.33	4.36	4.40	4.42	4.52	4.62	4.61	4.52	4.46	4.54	4.69	4.80	4.71	4.63	4.53	4.46
55	3.67	3.64	3.68	3.69	3.74	3.81	3.71	3.72	3.79	3.76	3.71	3.74	3.82	3.93	3.99	3.92	3.83	3.76	3.73
60	2.92	2.91	2.89	2.91	3.01	2.99	3.01	3.02	3.08	3.10	3.11	3.13	3.20	3.22	3.21	3.12	3.04	3.00	2.99
65	2.19	2.23	2.20	2.34	2.29	2.30	2.28	2.34	2.39	2.44	2.49	2.52	2.58	2.55	2.52	2.45	2.42	2.50	2.51
70	1.49	1.51	1.56	1.58	1.58	1.62	1.65	1.69	1.75	1.81	1.86	1.84	1.87	1.87	1.84	1.79	1.81	1.99	2.03
75	0.58	0.53	0.67	0.66	0.78	0.91	0.97	1.01	1.06	1.20	1.30	1.26	1.33	1.35	1.37	1.35	1.39	1.53	1.56
80	0.08	0.06	0.03	0.11	0.18	0.16	0.15	0.42	0.63	0.77	0.88	0.87	0.92	0.94	0.96	0.96	0.98	1.07	1.10
85	0.04	0.02	0.05	0.03	0.04	0.04	0.10	0.20	0.33	0.41	0.47	0.47	0.52	0.54	0.55	0.56	0.57	0.61	0.64
90	0.03	0.05	0.05	0.05	0.05	0.05	0.05	0.06	0.06	0.08	0.08	0.08	0.12	0.13	0.14	0.16	0.16	0.16	0.17

C Range: 0 - 360DEG
 C Interval: 5.0DEG
 Test Speed: HIGH
 Temperature:25.3DEG
 Operators:WLM
 Test Date:2020-03-07

γ Range: 0 - 90DEG
 γ Interval: 0.5DEG
 Test System:EVERFINE GO-2000H_V1 SYSTEM V2.0.287
 Humidity:65.0%
 Test Distance:13.669m [K=1.0000]
 Remarks:

LUMINOUS DISTRIBUTION INTENSITY DATA

Test:U:0.0959V I:0A P:0W PF:0 Lamp Flux:123.761x1 lm		
NAME: REL21.22.23 (Single head)	TYPE:	WEIGHT:
SPEC.:	DIM.:	SERIAL No.:2020030701
	SUR.:0.026	PROTECTION ANGLE:

Table--2

UNIT: cd

C (DEG) γ (DEG)	95	100	105	110	115	120	125	130	135	140	145	150	155	160	165	170	175	180	185
0	326	326	326	326	326	326	326	326	326	326	326	326	326	326	326	326	326	326	326
5	296	297	298	299	300	302	304	305	306	308	309	311	313	315	317	319	322	325	325
10	245	247	249	251	252	254	255	257	259	262	265	267	271	273	276	280	285	290	291
15	164	167	170	173	176	179	182	185	187	188	189	193	197	201	205	208	213	221	222
20	83.4	86.1	88.7	91.4	94.7	98.0	101	103	105	107	109	109	110	113	117	120	123	129	129
25	48.9	49.5	49.2	48.3	46.7	44.4	41.4	40.5	45.3	48.0	48.8	48.5	47.6	47.9	49.3	50.8	52.3	55.2	55.7
30	14.9	16.6	18.8	20.8	22.2	22.5	22.0	21.3	20.5	19.3	20.8	22.1	22.7	22.9	23.3	24.1	24.9	26.3	26.7
35	11.3	11.3	11.4	11.3	11.2	11.0	11.0	12.1	12.3	12.3	12.3	12.5	12.8	12.8	12.8	12.9	13.2	13.7	13.8
40	8.26	8.37	8.58	8.70	8.78	8.79	8.66	8.48	8.25	8.52	8.77	8.84	8.76	8.80	8.81	8.85	9.01	9.19	9.45
45	5.44	5.57	5.92	6.32	6.69	6.84	6.84	6.76	6.69	6.76	6.82	6.88	6.90	7.00	6.95	6.99	7.05	6.99	7.20
50	4.47	4.58	4.85	5.08	5.28	5.28	5.35	5.39	5.51	5.57	5.62	5.57	5.56	5.62	5.60	5.61	5.65	5.57	5.75
55	3.76	3.88	4.11	4.32	4.47	4.44	4.40	4.41	4.49	4.53	4.54	4.49	4.49	4.48	4.59	4.52	4.54	4.48	4.64
60	3.04	3.16	3.36	3.55	3.67	3.61	3.59	3.61	3.64	3.64	3.75	3.78	3.67	3.61	3.72	3.74	3.67	3.55	3.73
65	2.61	2.68	2.73	2.85	2.91	2.85	2.79	2.81	2.82	2.84	2.98	3.02	2.94	2.93	2.87	2.95	2.87	2.84	2.94
70	2.20	2.19	2.11	2.14	2.20	2.18	2.21	2.17	2.11	2.11	2.12	2.19	2.18	2.21	2.13	2.12	2.11	2.09	2.17
75	1.69	1.67	1.61	1.61	1.63	1.63	1.65	1.61	1.56	1.58	1.53	1.48	1.43	1.51	1.57	1.46	1.57	1.44	1.59
80	1.19	1.16	1.13	1.13	1.13	1.14	1.14	1.13	1.07	1.09	1.02	1.01	0.96	0.90	0.88	0.95	0.91	0.92	1.05
85	0.68	0.67	0.65	0.65	0.64	0.65	0.64	0.64	0.61	0.61	0.58	0.57	0.55	0.53	0.54	0.46	0.52	0.47	0.61
90	0.17	0.17	0.17	0.16	0.16	0.15	0.15	0.15	0.15	0.15	0.15	0.15	0.15	0.15	0.15	0.15	0.13	0.02	0.28

C Range: 0 - 360DEG γ Range: 0 - 90DEG
 C Interval: 5.0DEG γ Interval: 0.5DEG
 Test Speed: HIGH Test System:EVERFINE GO-2000H_V1 SYSTEM V2.0.287
 Temperature:25.3DEG Humidity:65.0%
 Operators:WLM Test Distance:13.669m [K=1.0000]
 Test Date:2020-03-07 Remarks:

LUMINOUS DISTRIBUTION INTENSITY DATA

Test:U:0.0959V I:0A P:0W PF:0 Lamp Flux:123.761x1 lm		
NAME: REL21.22.23 (Single head)	TYPE:	WEIGHT:
SPEC.:	DIM.:	SERIAL No.:2020030701
	SUR.:0.026	PROTECTION ANGLE:

Table--3

UNIT: cd

C (DEG) γ (DEG)	190	195	200	205	210	215	220	225	230	235	240	245	250	255	260	265	270	275	280
0	326	326	326	326	326	326	326	326	326	326	326	326	326	326	326	326	326	326	326
5	326	327	328	329	330	332	333	334	335	335	335	335	334	333	332	331	330	328	327
10	293	296	299	302	304	306	307	307	308	309	309	309	309	308	306	305	303	299	296
15	225	230	233	235	237	240	244	243	239	236	233	229	226	223	220	217	214	211	207
20	132	135	138	142	146	147	147	146	144	142	139	137	134	132	130	128	126	123	120
25	57.7	59.1	61.2	63.4	66.4	69.9	71.9	70.6	66.7	67.5	71.4	75.0	77.3	78.5	78.7	77.9	76.4	74.0	70.3
30	27.7	28.5	29.4	29.8	30.7	31.4	31.9	33.8	35.5	36.8	37.4	37.4	36.3	34.0	31.3	28.8	27.1	26.3	26.3
35	14.1	14.5	14.8	15.1	15.0	15.9	17.0	17.4	17.0	15.6	17.0	18.8	20.1	20.8	21.2	20.9	20.2	19.0	17.4
40	9.58	9.70	9.83	9.96	10.0	10.1	9.96	9.63	10.1	10.9	11.9	13.0	13.8	14.1	14.1	13.8	13.3	12.6	11.7
45	7.42	7.47	7.61	7.68	7.65	7.55	7.57	7.66	7.78	8.02	8.27	8.50	8.39	7.90	7.61	7.26	7.01	6.84	6.74
50	5.82	5.96	6.06	6.05	6.02	6.09	6.09	6.09	6.10	6.04	5.97	6.00	6.03	5.93	5.81	5.67	5.54	5.44	5.37
55	4.72	4.89	4.84	4.86	4.88	4.88	4.84	4.81	4.90	4.97	4.98	5.01	5.04	4.96	4.85	4.76	4.68	4.63	4.61
60	3.89	3.90	3.86	3.94	3.99	3.94	3.94	3.96	4.05	4.11	4.05	4.04	4.06	3.99	3.89	3.84	3.82	3.83	3.86
65	3.07	3.07	3.18	3.14	3.30	3.19	3.16	3.17	3.27	3.29	3.20	3.19	3.22	3.16	3.08	3.04	3.01	3.00	2.98
70	2.23	2.25	2.35	2.39	2.39	2.44	2.46	2.40	2.41	2.39	2.39	2.40	2.43	2.35	2.29	2.24	2.21	2.15	2.09
75	1.55	1.69	1.71	1.66	1.70	1.74	1.69	1.62	1.60	1.64	1.73	1.78	1.84	1.80	1.78	1.76	1.74	1.68	1.62
80	1.12	1.12	1.11	1.23	1.27	1.25	1.15	1.14	1.15	1.17	1.23	1.27	1.31	1.29	1.30	1.29	1.27	1.22	1.17
85	0.62	0.63	0.55	0.76	0.75	0.76	0.71	0.70	0.70	0.71	0.74	0.76	0.78	0.77	0.81	0.81	0.80	0.76	0.73
90	0.39	0.39	0.30	0.27	0.26	0.26	0.26	0.26	0.26	0.26	0.26	0.26	0.26	0.26	0.32	0.33	0.33	0.30	0.28

C Range: 0 - 360DEG
 C Interval: 5.0DEG
 Test Speed: HIGH
 Temperature:25.3DEG
 Operators:WLM
 Test Date:2020-03-07

γ Range: 0 - 90DEG
 γ Interval: 0.5DEG
 Test System:EVERFINE GO-2000H_V1 SYSTEM V2.0.287
 Humidity:65.0%
 Test Distance:13.669m [K=1.0000]
 Remarks:

LUMINOUS DISTRIBUTION INTENSITY DATA

Test:U:0.0959V I:0A P:0W PF:0 Lamp Flux:123.761x1 lm		
NAME:REL21.22.23 (Single head)	TYPE:	WEIGHT:
SPEC.:	DIM.:	SERIAL No.:2020030701
	SUR.:0.026	PROTECTION ANGLE:

Table--4

UNIT: cd

C (DEG) γ (DEG)	285	290	295	300	305	310	315	320	325	330	335	340	345	350	355				
0	326	326	326	326	326	326	326	326	326	326	326	326	326	326	326				
5	325	323	321	319	317	315	312	310	308	306	304	302	301	300	299				
10	291	286	281	276	271	267	264	261	259	255	253	249	245	243	242				
15	203	199	195	192	188	185	182	177	172	167	164	161	158	153	151				
20	116	111	108	106	103	100	98.2	94.7	89.7	84.9	80.3	77.6	75.3	72.5	69.3				
25	65.4	60.1	55.0	50.5	46.5	43.8	43.3	41.1	38.5	36.4	34.9	33.3	31.7	30.4	29.0				
30	26.2	25.9	25.3	24.5	23.5	22.0	20.0	17.8	16.9	16.2	15.3	14.3	13.8	13.6	13.2				
35	15.5	13.5	11.7	10.6	10.1	11.0	10.7	10.1	9.55	9.19	9.02	8.89	8.85	8.75	8.74				
40	10.7	9.57	8.70	8.18	7.81	7.49	7.21	7.11	6.97	6.80	6.67	6.59	6.56	6.53	6.48				
45	6.62	6.56	6.48	6.39	6.28	6.10	5.86	5.64	5.47	5.38	5.28	5.20	5.20	5.24	5.18				
50	5.30	5.22	5.12	5.14	5.09	4.92	4.71	4.55	4.49	4.58	4.53	4.40	4.42	4.42	4.33				
55	4.56	4.48	4.41	4.38	4.27	3.99	3.79	3.71	3.70	3.69	3.72	3.67	3.59	3.60	3.58				
60	3.82	3.74	3.70	3.69	3.52	3.28	3.11	2.99	2.83	2.83	2.88	2.90	2.82	2.81	2.86				
65	2.97	2.99	2.97	2.99	2.82	2.64	2.49	2.38	2.20	2.15	2.16	2.15	2.20	2.06	2.17				
70	2.11	2.19	2.21	2.27	2.07	1.97	1.86	1.81	1.62	1.59	1.52	1.42	1.44	1.40	1.42				
75	1.62	1.64	1.64	1.67	1.44	1.35	1.17	1.13	0.98	0.97	0.89	0.73	0.60	0.59	0.49				
80	1.17	1.17	1.18	1.18	1.03	0.96	0.81	0.71	0.40	0.17	0.27	0.20	0.15	0.06	0.05				
85	0.72	0.71	0.72	0.71	0.64	0.59	0.52	0.45	0.29	0.19	0.18	0.16	0.14	0.13	0.06				
90	0.27	0.26	0.26	0.26	0.25	0.25	0.24	0.24	0.23	0.23	0.23	0.21	0.21	0.21	0.21				

C Range: 0 - 360DEG
 C Interval: 5.0DEG
 Test Speed: HIGH
 Temperature:25.3DEG
 Operators:WLM
 Test Date:2020-03-07

γ Range: 0 - 90DEG
 γ Interval: 0.5DEG
 Test System:EVERFINE GO-2000H_V1 SYSTEM V2.0.287
 Humidity:65.0%
 Test Distance:13.669m [K=1.0000]
 Remarks: