

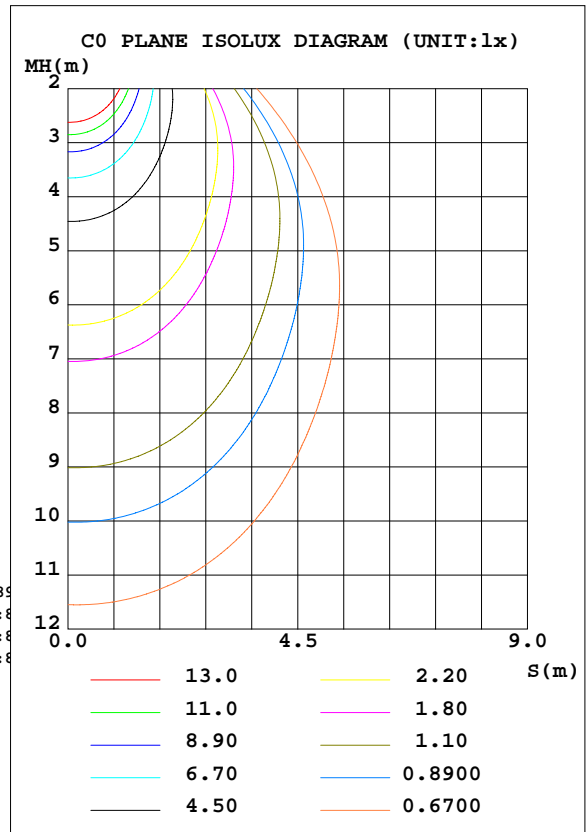
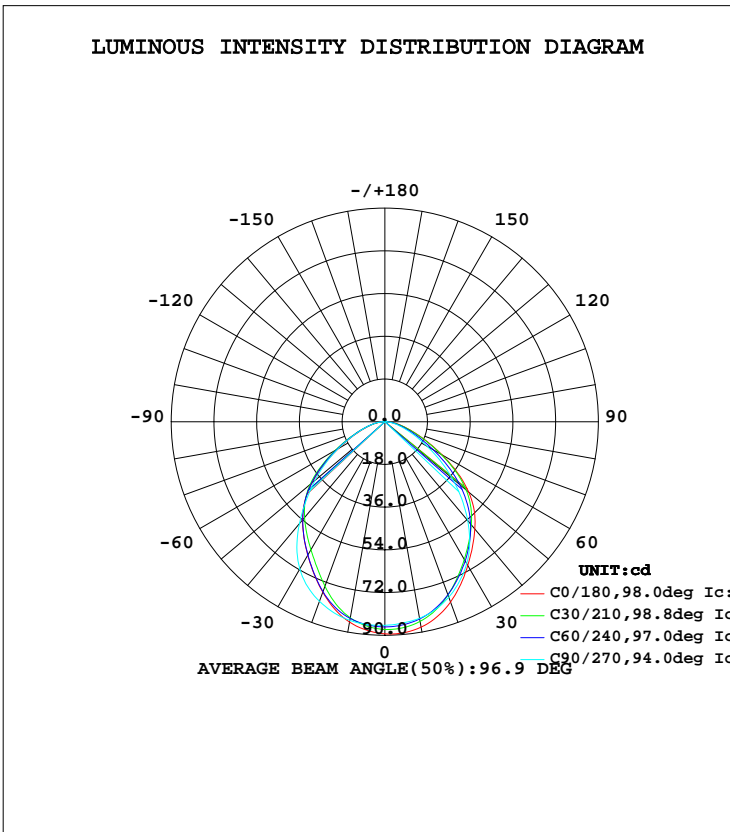


EVERFINE GONIOPHOTOMETERS SYSTEM TEST REPORT

LUMINAIRE PHOTOMETRIC TEST REPORT

Test:U:119.9V I:0.0911A P:2.873W PF:0.2630 Lamp Flux:199.752x1 lm		
NAME:	TYPE:	WEIGHT:
SPEC.:	DIM.:	SERIAL No.:
MFR.:	SUR.:	PROTECTION ANGLE:

DATA OF LAMP		PHOTOMETRIC DATA Eff: 69.54 lm/W			
MODEL	8918 without plate	Imax(cd)	89.46	S/MH(C0/180)	1.10
NOMINAL POWER(W)	2.5	LOR(%)	100.0	S/MH(C90/270)	1.24
RATED VOLTAGE(V)	120	TOTAL FLUX(lm)	199.75	η UP, DN(C0-180)	1.0,48.4
NOMINAL FLUX(lm)	199.752	CIE CLASS	DIRECT	η UP, DN(C180-360)	1.2,49.5
LAMPS INSIDE	1	η up(%)	2.2	CIBSE SHR NOM	1.25
TEST VOLTAGE(V)		η down(%)	97.8	CIBSE SHR MAX	1.30



C Range: 0 - 360DEG  
 C Interval: 15.0DEG  
 Test Speed: HIGH  
 Temperature:25.3DEG  
 Operators:  
 Test Date:2020-05-23

γ Range: 0 - 180DEG  
 γ Interval: 1.0DEG  
 Test System:EVERFINE GO-2000B\_V1 SYSTEM V2.0.291  
 Humidity:65.0%  
 Test Distance:7.500m [K=1.0000]  
 Remarks:



EVERFINE GONIOPHOTOMETERS SYSTEM TEST REPORT

ZONAL FLUX DIAGRAM

ZONAL FLUX DIAGRAM:

γ	C0	C45	C90	C135	C180	C225	C270	C315	γ	Φ zone	Φ total	lum, lamp
10	87.88	84.84	84.07	83.21	85.71	83.72	84.97	84.86	0- 10	8.157	8.157	4.08,4.08
20	80.88	77.58	78.70	77.99	76.46	74.29	80.51	80.88	10- 20	23.05	31.21	15.6,15.6
30	69.90	67.43	68.99	67.87	65.00	62.80	71.71	72.67	20- 30	33.72	64.93	32.5,32.5
40	59.01	57.00	54.38	52.69	54.00	52.99	56.00	58.27	30- 40	38.64	103.6	51.9,51.9
50	46.15	44.07	37.02	35.12	40.18	41.12	38.52	41.21	40- 50	36.94	140.5	70.3,70.3
60	27.82	26.02	20.41	18.81	22.70	24.05	22.81	24.91	50- 60	28.36	168.9	84.5,84.5
70	13.07	12.11	9.390	8.540	10.58	11.31	11.02	11.85	60- 70	16.38	185.3	92.7,92.7
80	5.286	4.763	3.552	3.143	4.107	4.479	4.554	4.784	70- 80	7.695	193.0	96.6,96.6
90	0.8431	0.6464	0.5628	0.5469	0.6933	0.6748	0.7882	0.9418	80- 90	2.446	195.4	97.8,97.8
100	0.5777	0.5700	0.5623	0.5508	0.7048	0.6701	0.6701	0.6547	90-100	0.6812	196.1	98.2,98.2
110	0.5931	0.5970	0.5623	0.5777	0.7357	0.6701	0.6817	0.6547	100-110	0.6588	196.7	98.5,98.5
120	0.6123	0.6316	0.6085	0.6278	0.7703	0.6893	0.7125	0.6701	110-120	0.6410	197.4	98.8,98.8
130	0.6547	0.6702	0.6393	0.6702	0.8088	0.7317	0.7395	0.7163	120-130	0.6100	198.0	99.1,99.1
140	0.7201	0.7279	0.6970	0.7241	0.8435	0.7703	0.7781	0.7432	130-140	0.5598	198.5	99.4,99.4
150	0.7741	0.7973	0.7586	0.7858	0.8859	0.8126	0.8243	0.7780	140-150	0.4851	199.0	99.6,99.6
160	0.8472	0.8627	0.8279	0.8551	0.9359	0.8627	0.8743	0.8433	150-160	0.3829	199.4	99.8,99.8
170	0.9012	0.9166	0.8818	0.9050	0.9629	0.9012	0.9089	0.8780	160-170	0.2495	199.7	100,100
180	0.9474	0.9205	0.9089	0.9050	0.9705	0.9166	0.9089	0.9050	170-180	0.0869	199.8	100,100
DEG	LUMINOUS INTENSITY:cd									UNIT:lm		

C Range: 0 - 360DEG  
 C Interval: 15.0DEG  
 Test Speed: HIGH  
 Temperature:25.3DEG  
 Operators:  
 Test Date:2020-05-23

γ Range: 0 - 180DEG  
 γ Interval: 1.0DEG  
 Test System:EVERFINE GO-2000B\_V1 SYSTEM V2.0.291  
 Humidity:65.0%  
 Test Distance:7.500m [K=1.0000]  
 Remarks:

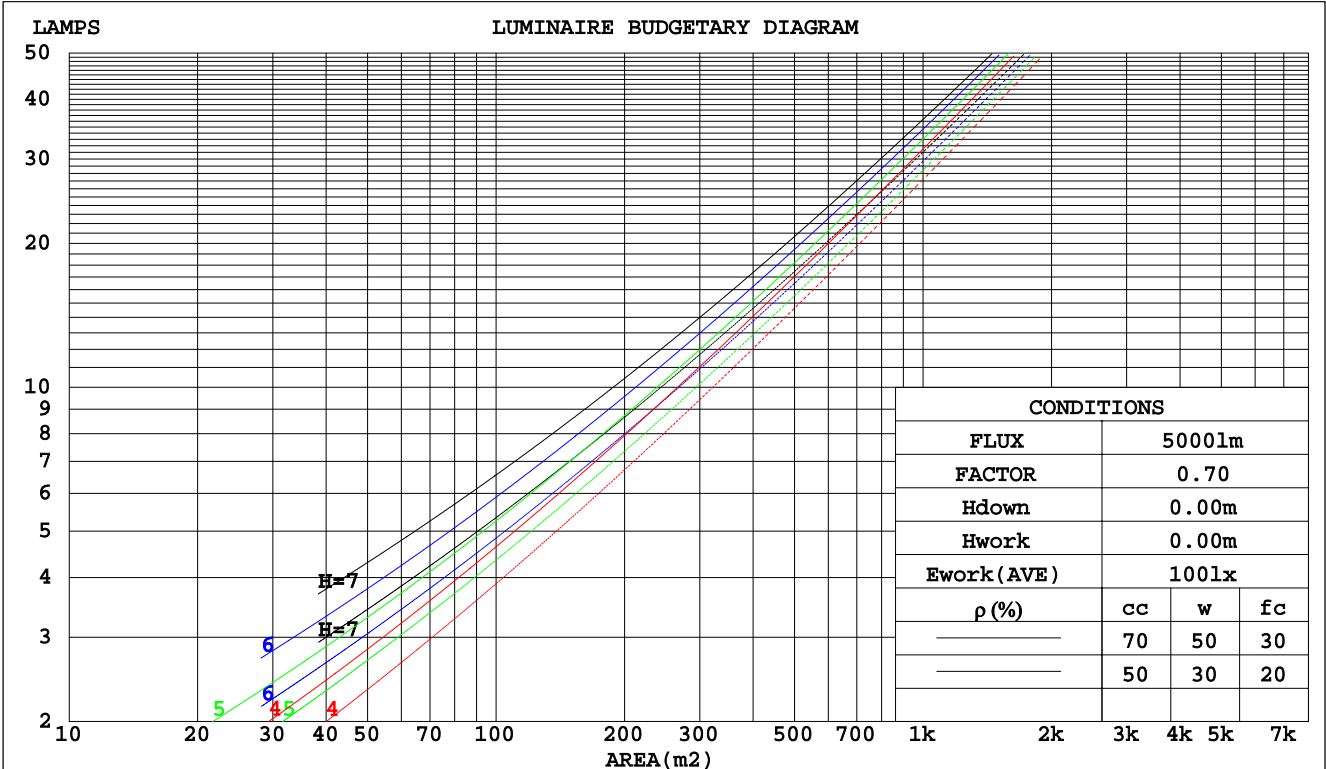


EVERFINE GONIOPHOTOMETERS SYSTEM TEST REPORT

CU AND LUMINAIRE BUDGETARY ESTIMATE DIAGRAM

Test:U:119.9V I:0.0911A P:2.873W PF:0.2630 Lamp Flux:199.752x1 lm		
NAME:	TYPE:	WEIGHT:
SPEC.:	DIM.:	SERIAL No.:
MFR.:	SUR.:	PROTECTION ANGLE:

pcc	80%			70%			50%			30%			10%			0
	50%	30%	10%	50%	30%	10%	50%	30%	10%	50%	30%	10%	50%	30%	10%	0
pw																0
pfc	20%			20%			20%			20%			20%			0
RCR	RCR:Room Cavity Ratio						Coefficients of Utilization(CU)									
0.0	1.19	1.19	1.19	1.16	1.16	1.16	1.10	1.10	1.10	1.05	1.05	1.05	1.00	1.00	1.00	.98
1.0	1.05	1.01	.98	1.03	.99	.96	.98	.95	.93	.94	.92	.90	.90	.88	.87	.84
2.0	.93	.87	.82	.91	.86	.81	.87	.83	.79	.84	.80	.76	.81	.77	.74	.72
3.0	.83	.75	.69	.81	.74	.69	.78	.72	.67	.75	.70	.66	.72	.68	.64	.62
4.0	.74	.66	.60	.73	.65	.59	.70	.63	.58	.67	.62	.57	.65	.60	.56	.54
5.0	.67	.58	.52	.65	.58	.52	.63	.56	.51	.61	.55	.50	.59	.54	.50	.48
6.0	.60	.52	.46	.59	.51	.46	.57	.50	.45	.56	.49	.45	.54	.48	.44	.42
7.0	.55	.47	.41	.54	.46	.41	.52	.45	.40	.51	.45	.40	.49	.44	.39	.38
8.0	.50	.42	.37	.50	.42	.37	.48	.41	.36	.47	.41	.36	.46	.40	.36	.34
9.0	.46	.39	.33	.46	.38	.33	.44	.38	.33	.43	.37	.33	.42	.36	.32	.31
10.0	.43	.35	.30	.42	.35	.30	.41	.35	.30	.40	.34	.30	.39	.34	.30	.28



C Range: 0 - 360DEG  
 C Interval: 15.0DEG  
 Test Speed: HIGH  
 Temperature: 25.3DEG  
 Operators:  
 Test Date: 2020-05-23

γ Range: 0 - 180DEG  
 γ Interval: 1.0DEG  
 Test System: EVERFINE GO-2000B\_V1 SYSTEM V2.0.291  
 Humidity: 65.0%  
 Test Distance: 7.500m [K=1.0000]  
 Remarks:



EVERFINE GONIOPHOTOMETERS SYSTEM TEST REPORT

WEC AND CCEC

Test:U:119.9V I:0.0911A P:2.873W PF:0.2630 Lamp Flux:199.752x1 lm		
NAME:	TYPE:	WEIGHT:
SPEC.:	DIM.:	SERIAL No.:
MFR.:	SUR.:	PROTECTION ANGLE:

ρcc	80%			70%			50%			30%			10%			0
ρw	50%	30%	10%	50%	30%	10%	50%	30%	10%	50%	30%	10%	50%	30%	10%	0
ρfc	20%			20%			20%			20%			20%			0
RCR	RCR:Room Cavity Ratio						Wall Exitance Coefficients(WEC)									
0.0																
1.0	.273	.155	.049	.265	.151	.048	.251	.144	.046	.238	.137	.044	.226	.131	.042	
2.0	.261	.143	.044	.254	.140	.043	.241	.134	.042	.230	.129	.040	.219	.124	.039	
3.0	.244	.130	.039	.238	.128	.038	.227	.123	.037	.217	.119	.036	.207	.115	.036	
4.0	.228	.119	.035	.223	.117	.034	.213	.113	.034	.204	.109	.033	.195	.106	.032	
5.0	.213	.109	.031	.208	.107	.031	.200	.104	.031	.191	.101	.030	.184	.098	.029	
6.0	.199	.100	.029	.195	.098	.028	.187	.096	.028	.180	.093	.027	.173	.091	.027	
7.0	.187	.092	.026	.183	.091	.026	.176	.089	.026	.169	.087	.025	.163	.085	.025	
8.0	.175	.086	.024	.172	.085	.024	.166	.083	.024	.160	.081	.023	.154	.079	.023	
9.0	.165	.080	.022	.162	.079	.022	.156	.077	.022	.151	.076	.022	.146	.074	.021	
10.0	.156	.075	.021	.153	.074	.021	.148	.072	.020	.143	.071	.020	.138	.070	.020	

ρcc	80%			70%			50%			30%			10%			0
ρw	50%	30%	10%	50%	30%	10%	50%	30%	10%	50%	30%	10%	50%	30%	10%	0
ρfc	20%			20%			20%			20%			20%			0
RCR	RCR:Room Cavity Ratio						Ceiling Cavity Exitance Coefficients(CCEC)									
0.0	.207	.207	.207	.177	.177	.177	.121	.121	.121	.069	.069	.069	.022	.022	.022	
1.0	.195	.173	.154	.166	.149	.133	.114	.102	.092	.066	.059	.053	.021	.019	.017	
2.0	.185	.149	.119	.158	.128	.103	.109	.089	.072	.063	.052	.042	.020	.017	.014	
3.0	.176	.131	.095	.151	.113	.082	.104	.079	.058	.060	.046	.034	.019	.015	.011	
4.0	.169	.118	.078	.145	.102	.068	.100	.071	.048	.058	.041	.028	.019	.013	.009	
5.0	.161	.107	.067	.139	.093	.058	.095	.065	.041	.055	.038	.024	.018	.012	.008	
6.0	.154	.099	.058	.133	.085	.051	.092	.060	.036	.053	.035	.021	.017	.011	.007	
7.0	.148	.092	.052	.127	.079	.045	.088	.056	.032	.051	.033	.019	.017	.011	.006	
8.0	.142	.086	.047	.122	.074	.041	.085	.052	.029	.049	.031	.017	.016	.010	.006	
9.0	.136	.081	.043	.117	.070	.038	.081	.049	.027	.047	.029	.016	.015	.010	.005	
10.0	.131	.077	.041	.113	.067	.035	.078	.047	.025	.046	.028	.015	.015	.009	.005	

C Range: 0 - 360DEG  
 C Interval: 15.0DEG  
 Test Speed: HIGH  
 Temperature:25.3DEG  
 Operators:  
 Test Date:2020-05-23

γ Range: 0 - 180DEG  
 γ Interval: 1.0DEG  
 Test System:EVERFINE GO-2000B\_V1 SYSTEM V2.0.291  
 Humidity:65.0%  
 Test Distance:7.500m [K=1.0000]  
 Remarks:



EVERFINE GONIOPHOTOMETERS SYSTEM TEST REPORT

UGR(Unified Glare Rating) Table

Test:U:119.9V I:0.0911A P:2.873W PF:0.2630 Lamp Flux:199.752x1 lm										
NAME:					TYPE:			WEIGHT:		
SPEC.:					DIM.:			SERIAL No.:		
MFR.:					SUR.:			PROTECTION ANGLE:		
ceiling/cavity	0.7	0.7	0.5	0.5	0.3	0.7	0.7	0.5	0.5	0.3
walls	0.5	0.3	0.5	0.3	0.3	0.5	0.3	0.5	0.3	0.3
working plane	0.2	0.2	0.2	0.2	0.2	0.2	0.2	0.2	0.2	0.2
Room dimensions	Viewed crosswise					Viewed endwise				
x = 2H y = 2H	11.2	12.6	11.5	12.8	13.0	10.1	11.5	10.4	11.7	12.0
3H	12.0	13.3	12.3	13.6	13.8	10.7	12.0	11.0	12.3	12.5
4H	12.3	13.5	12.6	13.8	14.1	10.9	12.1	11.3	12.4	12.7
6H	12.5	13.6	12.9	13.9	14.3	11.1	12.2	11.4	12.5	12.8
8H	12.6	13.7	13.0	14.0	14.3	11.1	12.2	11.5	12.5	12.8
12H	12.6	13.7	13.0	14.0	14.4	11.1	12.2	11.5	12.5	12.8
4H 2H	11.5	12.7	11.8	13.0	13.2	10.6	11.8	10.9	12.1	12.3
3H	12.4	13.5	12.8	13.8	14.2	11.3	12.4	11.7	12.7	13.1
4H	12.8	13.8	13.2	14.1	14.5	11.7	12.6	12.1	13.0	13.3
6H	13.2	14.0	13.6	14.4	14.8	11.9	12.7	12.3	13.1	13.5
8H	13.3	14.1	13.7	14.5	14.9	12.0	12.7	12.4	13.1	13.6
12H	13.4	14.1	13.9	14.5	15.0	12.0	12.7	12.5	13.1	13.6
8H 4H	12.9	13.7	13.4	14.1	14.5	11.8	12.6	12.3	13.0	13.4
6H	13.4	14.0	13.8	14.4	14.9	12.2	12.8	12.6	13.2	13.7
8H	13.6	14.1	14.1	14.6	15.1	12.3	12.9	12.8	13.3	13.8
12H	13.8	14.2	14.3	14.7	15.3	12.4	12.9	12.9	13.4	13.9
12H 4H	12.9	13.6	13.3	14.0	14.5	11.8	12.5	12.3	12.9	13.4
6H	13.4	13.9	13.9	14.4	14.9	12.2	12.8	12.7	13.2	13.7
8H	13.6	14.1	14.1	14.6	15.1	12.4	12.9	12.9	13.4	13.9
Variations with the observer position at spacings:										
S = 1.0H	+ 0.3 / - 0.4					+ 0.4 / - 0.5				
1.5H	+ 0.3 / - 0.5					+ 0.3 / - 0.5				
2.0H	+ 0.7 / - 0.6					+ 0.5 / - 1.0				

CIE Pub.117 Corrected 199.8 lm Total Lamp Luminous Flux. (8log(F/F0) = -5.6)

C Range: 0 - 360DEG  
 C Interval: 15.0DEG  
 Test Speed: HIGH  
 Temperature:25.3DEG  
 Operators:  
 Test Date:2020-05-23

γ Range: 0 - 180DEG  
 γ Interval: 1.0DEG  
 Test System:EVERFINE GO-2000B\_V1 SYSTEM V2.0.291  
 Humidity:65.0%  
 Test Distance:7.500m [K=1.0000]  
 Remarks:



EVERFINE GONIOPHOTOMETERS SYSTEM TEST REPORT

UTILIZATION FACTORS TABLE

Test:U:119.9V I:0.0911A P:2.873W PF:0.2630 Lamp Flux:199.752x1 lm		
NAME:	TYPE:	WEIGHT:
SPEC.:	DIM.:	SERIAL No.:
MFR.:	SUR.:	PROTECTION ANGLE:

REFLECTANCE										
Ceiling	0.8	0.8	0.8	0.7	0.7	0.7	0.5	0.5	0.5	0
Walls	0.7	0.5	0.3	0.7	0.5	0.3	0.7	0.5	0.3	0
Working plane	0.2	0.2	0.2	0.2	0.2	0.2	0.2	0.2	0.2	0
ROOM INDEX	UTILIZATION FACTORS(PERCENT) $k(RI) \times RCR = 5$									
k = 0.60	61	51	44	61	50	44	59	50	44	38
0.80	72	61	54	70	60	54	69	60	53	47
1.00	80	70	63	79	69	63	76	70	62	56
1.25	87	77	71	85	76	70	82	75	69	63
1.50	91	83	76	90	82	76	87	80	74	67
2.00	98	90	84	96	89	83	92	86	82	74
2.50	101	94	89	99	93	88	95	90	85	77
3.00	104	98	93	102	96	92	97	93	89	81
4.00	107	102	98	105	100	97	100	97	94	85
5.00	109	105	101	107	103	100	102	99	96	87
ROOM INDEX	UF(total)									Direct
According to DIN EN 13032-2 2004			Suspended				SHRNOM = 1.25			

C Range: 0 - 360DEG  
 C Interval: 15.0DEG  
 Test Speed: HIGH  
 Temperature:25.3DEG  
 Operators:  
 Test Date:2020-05-23

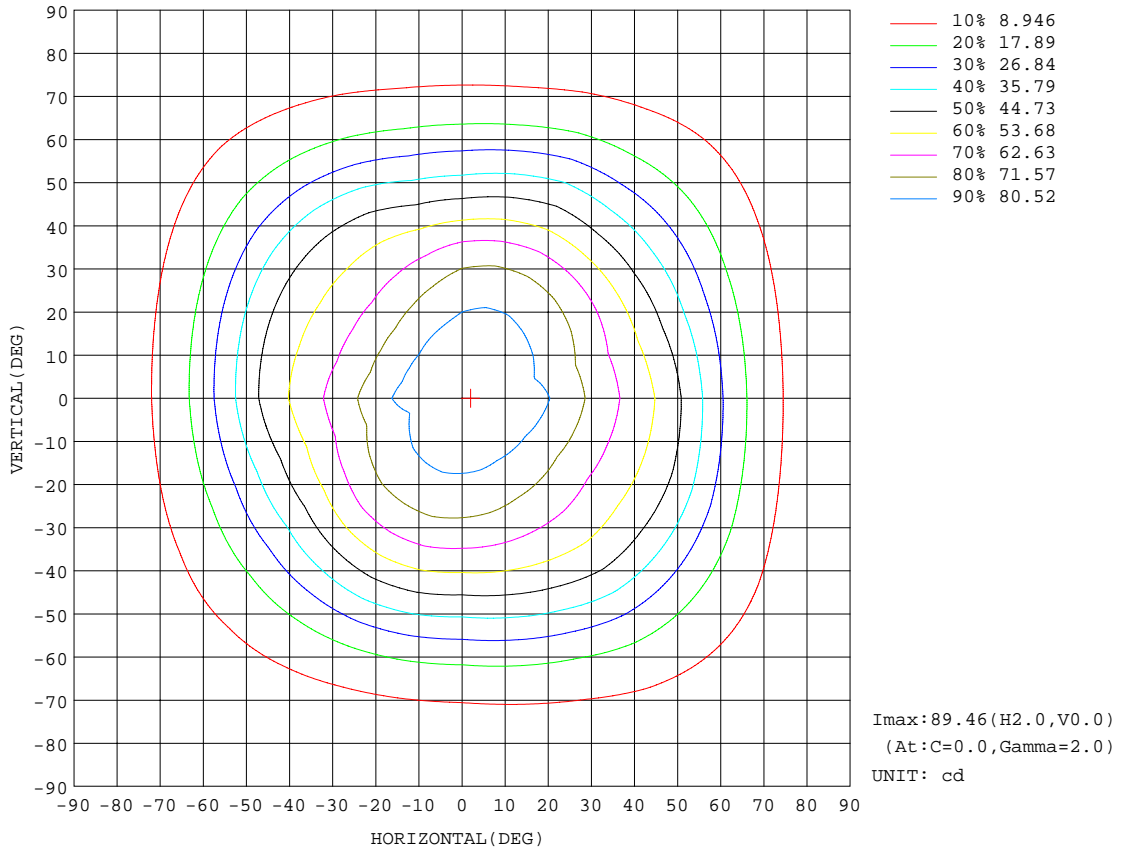
$\gamma$  Range: 0 - 180DEG  
 $\gamma$  Interval: 1.0DEG  
 Test System:EVERFINE GO-2000B\_V1 SYSTEM V2.0.291  
 Humidity:65.0%  
 Test Distance:7.500m [K=1.0000]  
 Remarks:



EVERFINE GONIOPHOTOMETERS SYSTEM TEST REPORT

ISOCANDELA DIAGRAM

Test:U:119.9V I:0.0911A P:2.873W PF:0.2630 Lamp Flux:199.752x1 lm		
NAME:	TYPE:	WEIGHT:
SPEC.:	DIM.:	SERIAL No.:
MFR.:	SUR.:	PROTECTION ANGLE:



C Range: 0 - 360DEG  
C Interval: 15.0DEG  
Test Speed: HIGH  
Temperature: 25.3DEG  
Operators:  
Test Date: 2020-05-23

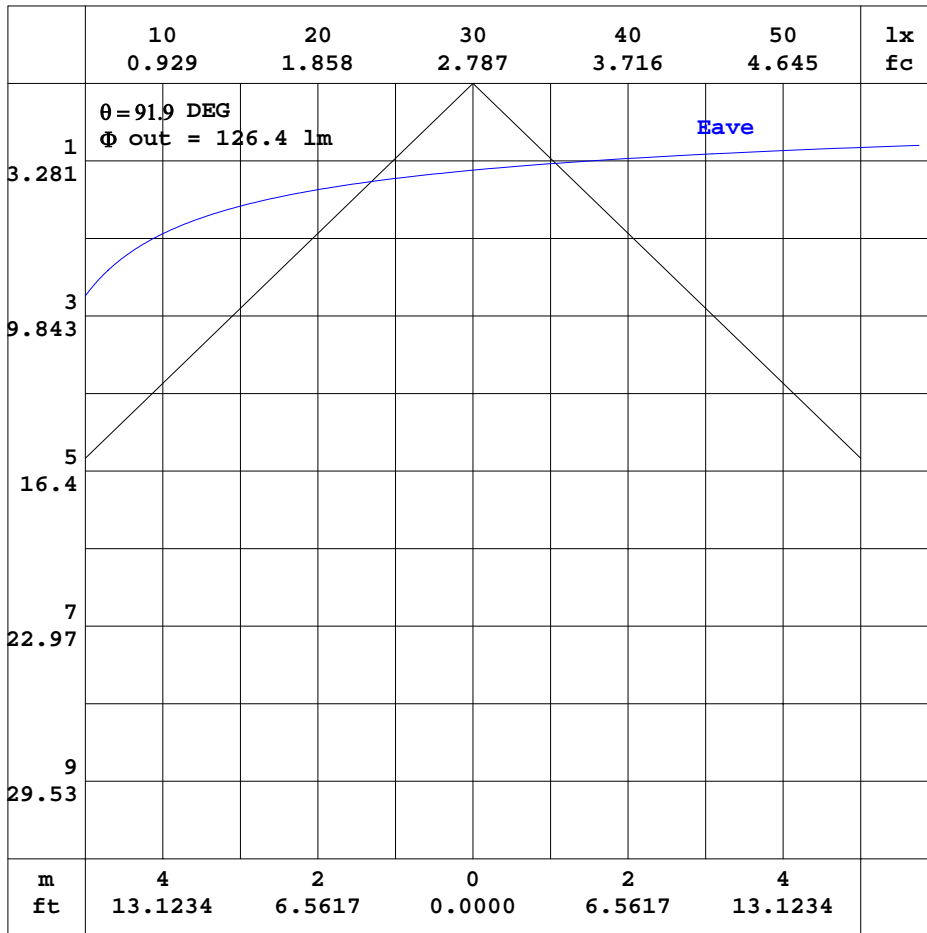
γ Range: 0 - 180DEG  
γ Interval: 1.0DEG  
Test System: EVERFINE GO-2000B\_V1 SYSTEM V2.0.291  
Humidity: 65.0%  
Test Distance: 7.500m [K=1.0000]  
Remarks:



EVERFINE GONIOPHOTOMETERS SYSTEM TEST REPORT

AAI CURVES

Test:U:119.9V I:0.0911A P:2.873W PF:0.2630 Lamp Flux:199.752x1 lm		
NAME:	TYPE:	WEIGHT:
SPEC.:	DIM.:	SERIAL No.:
MFR.:	SUR.:	PROTECTION ANGLE:



Note:The Curves indicate the illuminated area and the average illumination when the luminaire is at different distance.

C Range: 0 - 360DEG  
 C Interval: 15.0DEG  
 Test Speed: HIGH  
 Temperature:25.3DEG  
 Operators:  
 Test Date:2020-05-23

γ Range: 0 - 180DEG  
 γ Interval: 1.0DEG  
 Test System:EVERFINE GO-2000B\_V1 SYSTEM V2.0.291  
 Humidity:65.0%  
 Test Distance:7.500m [K=1.0000]  
 Remarks:

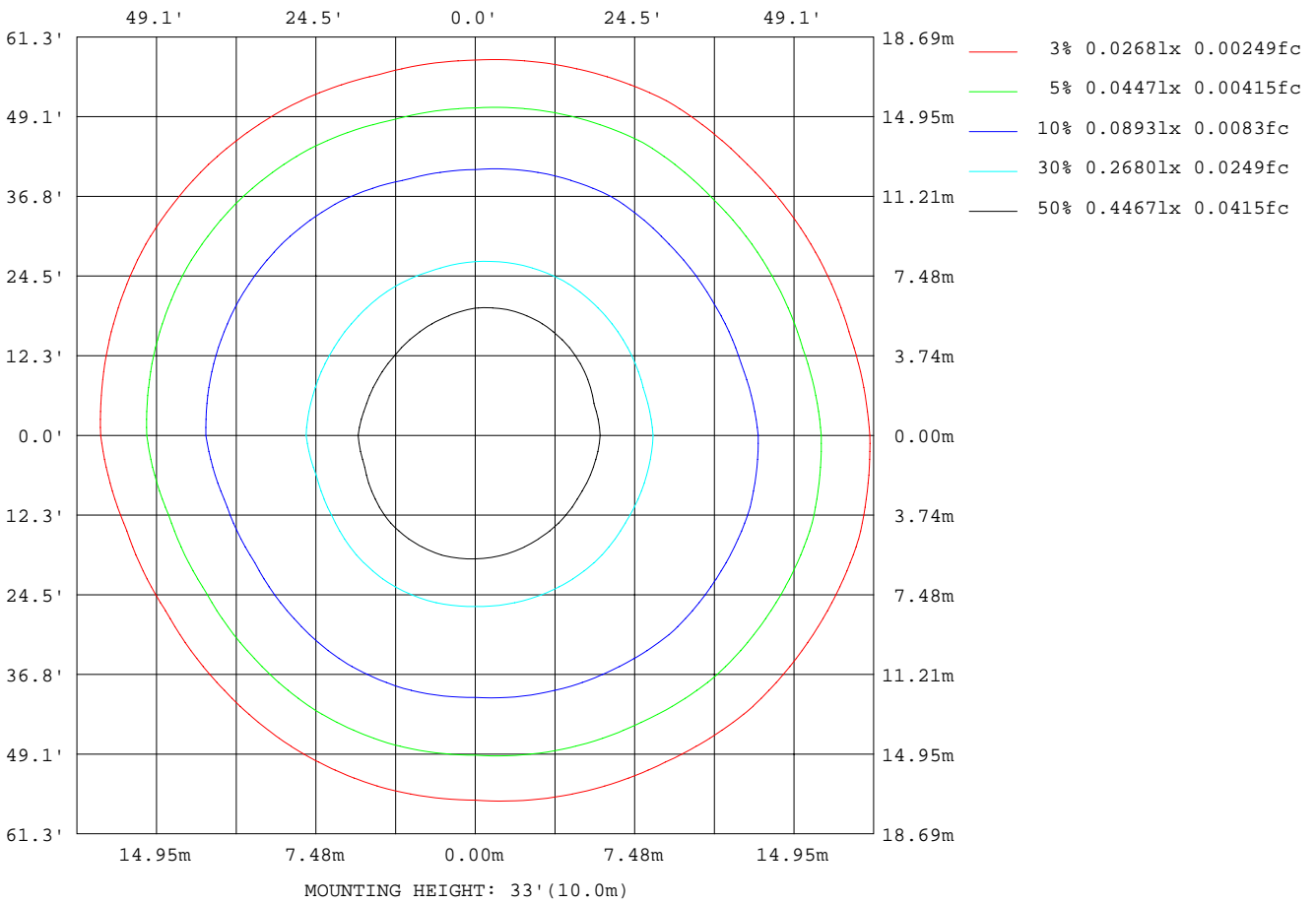




EVERFINE GONIOPHOTOMETERS SYSTEM TEST REPORT

ISOLUX DIAGRAM

Test:U:119.9V I:0.0911A P:2.873W PF:0.2630 Lamp Flux:199.752x1 lm		
NAME:	TYPE:	WEIGHT:
SPEC.:	DIM.:	SERIAL No.:
MFR.:	SUR.:	PROTECTION ANGLE:



C Range: 0 - 360DEG  
 C Interval: 15.0DEG  
 Test Speed: HIGH  
 Temperature: 25.3DEG  
 Operators:  
 Test Date: 2020-05-23

γ Range: 0 - 180DEG  
 γ Interval: 1.0DEG  
 Test System: EVERFINE GO-2000B\_V1 SYSTEM V2.0.291  
 Humidity: 65.0%  
 Test Distance: 7.500m [K=1.0000]  
 Remarks:



EVERFINE GONIOPHOTOMETERS SYSTEM TEST REPORT

LED Avg.L Report

Test:U:119.9V I:0.0911A P:2.873W PF:0.2630 Lamp Flux:199.752x1 lm		
NAME:	TYPE:	WEIGHT:
SPEC.:	DIM.:	SERIAL No.:
MFR.:	SUR.:	PROTECTION ANGLE:

AvgL	cd/m2
L_0~180(65)av	415
L_0~180(75)av	298
L_0~180(85)av	267
L_90~270(65)av	357
L_90~270(75)av	259
L_90~270(85)av	228
L_45(65)av	386
L_45(75)av	274
L_45(85)av	244

Standard: GB/T 29293-2012

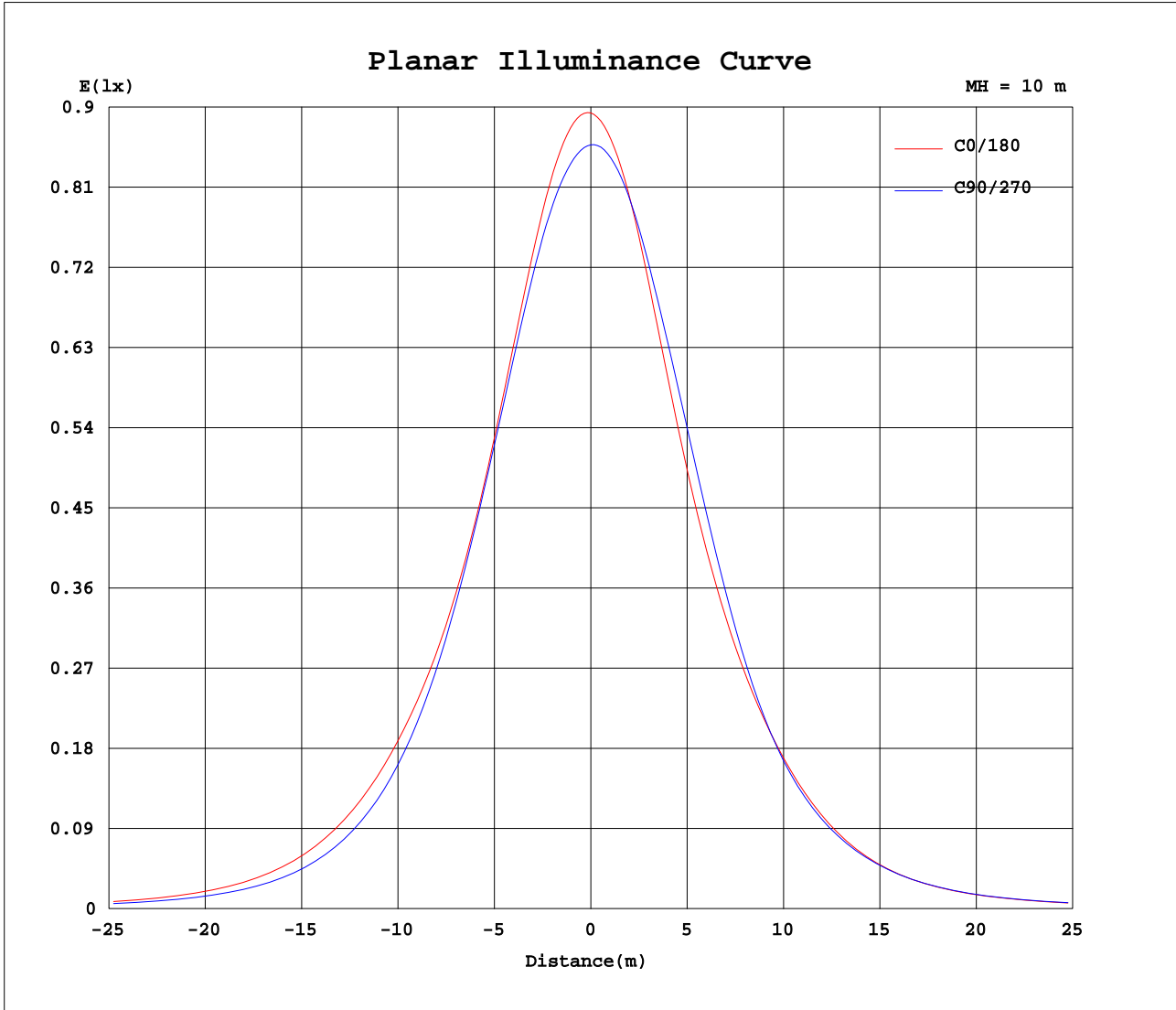
C Range: 0 - 360DEG  
 C Interval: 15.0DEG  
 Test Speed: HIGH  
 Temperature:25.3DEG  
 Operators:  
 Test Date:2020-05-23

γ Range: 0 - 180DEG  
 γ Interval: 1.0DEG  
 Test System:EVERFINE GO-2000B\_V1 SYSTEM V2.0.291  
 Humidity:65.0%  
 Test Distance:7.500m [K=1.0000]  
 Remarks:



EVERFINE GONIOPHOTOMETERS SYSTEM TEST REPORT

Planar Illuminance Curve



C Range: 0 - 360DEG  
C Interval: 15.0DEG  
Test Speed: HIGH  
Temperature: 25.3DEG  
Operators:  
Test Date: 2020-05-23

$\gamma$  Range: 0 - 180DEG  
 $\gamma$  Interval: 1.0DEG  
Test System: EVERFINE GO-2000B\_V1 SYSTEM V2.0.291  
Humidity: 65.0%  
Test Distance: 7.500m [K=1.0000]  
Remarks:



EVERFINE GONIOPHOTOMETERS SYSTEM TEST REPORT

LUMINOUS DISTRIBUTION INTENSITY DATA

Test:U:119.9V I:0.0911A P:2.873W PF:0.2630 Lamp Flux:199.752x1 lm		
NAME:	TYPE:	WEIGHT:
SPEC.:	DIM.:	SERIAL No.:
MFR.:	SUR.:	PROTECTION ANGLE:

Table--1 UNIT: cd

C (DEG) \ γ (DEG)	0	15	30	45	60	75	90	105	120	135	150	165	180	195	210	225	240	255	270
0	89.3	88.3	87.5	86.9	86.4	86.1	85.8	85.6	85.4	85.3	85.1	85.1	89.3	88.3	87.5	86.9	86.4	86.1	85.8
5	89.3	88.1	87.1	86.5	85.9	85.5	85.2	84.9	84.6	84.4	84.2	84.0	88.2	87.0	86.5	86.0	85.9	85.8	85.7
10	87.9	86.6	85.4	84.8	84.4	84.3	84.1	83.9	83.6	83.2	82.5	82.0	85.7	84.3	83.9	83.7	84.2	84.6	85.0
15	85.1	83.6	82.3	81.9	81.6	82.0	82.0	82.0	81.7	81.2	80.0	78.8	81.8	79.9	79.6	79.8	81.0	82.1	83.3
20	80.9	79.2	77.7	77.6	77.7	78.3	78.7	79.0	78.6	78.0	76.4	74.5	76.5	74.1	73.8	74.3	76.2	78.3	80.5
25	75.6	73.8	72.4	72.5	72.9	73.8	74.3	74.8	74.3	73.6	71.6	69.3	70.7	68.1	67.7	68.3	70.5	73.5	76.8
30	69.9	68.2	67.0	67.4	67.7	68.5	69.0	69.6	68.9	67.9	65.3	63.3	65.0	62.8	62.3	62.8	64.9	67.8	71.7
35	64.4	62.9	61.8	62.3	62.2	62.3	62.3	63.0	62.4	60.9	58.1	57.0	59.5	57.9	57.4	57.8	59.4	61.3	64.7
40	59.0	57.8	56.7	57.0	56.2	55.3	54.4	55.0	54.5	52.7	50.2	50.4	54.0	53.1	52.7	53.0	53.9	54.0	56.0
45	53.4	52.5	51.3	51.2	49.2	47.3	45.8	46.4	45.9	43.9	41.9	43.2	47.8	47.7	47.5	47.7	47.7	46.1	46.9
50	46.1	46.2	44.7	44.1	41.2	38.9	37.0	37.5	37.0	35.1	33.8	35.5	40.2	40.8	41.1	41.1	40.4	38.1	38.5
55	37.3	38.0	36.4	35.2	32.2	30.2	28.3	28.5	27.9	26.5	25.7	27.3	31.2	32.3	32.8	32.8	31.9	30.1	30.5
60	27.8	28.6	27.2	26.0	23.5	21.9	20.4	20.3	19.7	18.8	18.5	19.7	22.7	23.5	24.3	24.0	23.5	22.4	22.8
65	19.4	20.0	19.0	18.1	16.2	15.2	14.0	13.8	13.3	12.8	12.7	13.6	15.7	16.3	16.9	16.7	16.5	15.8	16.1
70	13.1	13.4	12.7	12.1	10.9	10.2	9.39	9.14	8.73	8.54	8.54	9.16	10.6	11.0	11.4	11.3	11.2	10.9	11.0
75	8.54	8.66	8.21	7.84	7.11	6.60	6.06	5.80	5.51	5.44	5.51	5.91	6.90	7.08	7.42	7.38	7.45	7.24	7.33
80	5.29	5.30	5.02	4.76	4.31	3.97	3.55	3.36	3.14	3.14	3.19	3.45	4.11	4.20	4.47	4.48	4.60	4.50	4.55
85	2.78	2.80	2.57	2.43	2.10	1.90	1.62	1.50	1.36	1.34	1.33	1.45	1.87	1.94	2.14	2.19	2.32	2.30	2.36
90	0.84	0.83	0.72	0.65	0.59	0.57	0.56	0.55	0.55	0.55	0.55	0.55	0.69	0.69	0.68	0.67	0.67	0.71	0.79
95	0.58	0.57	0.57	0.57	0.57	0.57	0.56	0.56	0.55	0.55	0.55	0.56	0.70	0.69	0.69	0.67	0.67	0.67	0.67
100	0.58	0.57	0.57	0.57	0.57	0.57	0.56	0.57	0.57	0.55	0.55	0.56	0.70	0.69	0.69	0.67	0.68	0.67	0.67
105	0.58	0.58	0.57	0.58	0.57	0.57	0.56	0.57	0.56	0.57	0.55	0.57	0.71	0.69	0.69	0.67	0.68	0.67	0.67
110	0.59	0.60	0.57	0.60	0.57	0.59	0.56	0.59	0.56	0.58	0.55	0.59	0.74	0.69	0.70	0.67	0.69	0.67	0.68
115	0.60	0.62	0.59	0.62	0.59	0.61	0.61	0.61	0.57	0.60	0.56	0.62	0.75	0.70	0.73	0.68	0.71	0.67	0.70
120	0.61	0.64	0.60	0.63	0.60	0.63	0.61	0.63	0.59	0.63	0.59	0.64	0.77	0.71	0.74	0.69	0.72	0.68	0.71
125	0.64	0.67	0.62	0.65	0.61	0.65	0.61	0.65	0.61	0.65	0.62	0.66	0.79	0.73	0.76	0.72	0.74	0.70	0.72
130	0.65	0.69	0.65	0.67	0.64	0.68	0.64	0.67	0.64	0.67	0.65	0.69	0.81	0.75	0.77	0.73	0.76	0.72	0.74
135	0.69	0.71	0.67	0.70	0.66	0.70	0.67	0.70	0.67	0.70	0.67	0.71	0.82	0.78	0.80	0.75	0.77	0.73	0.76
140	0.72	0.74	0.70	0.73	0.69	0.73	0.70	0.73	0.69	0.72	0.71	0.74	0.84	0.79	0.82	0.77	0.80	0.75	0.78
145	0.74	0.77	0.73	0.76	0.72	0.76	0.73	0.76	0.72	0.75	0.72	0.77	0.87	0.81	0.84	0.79	0.82	0.77	0.80
150	0.77	0.80	0.75	0.80	0.75	0.79	0.76	0.79	0.75	0.79	0.76	0.80	0.89	0.84	0.87	0.81	0.84	0.80	0.82
155	0.81	0.84	0.80	0.83	0.79	0.82	0.79	0.82	0.79	0.82	0.79	0.84	0.91	0.85	0.89	0.85	0.87	0.83	0.85
160	0.85	0.88	0.84	0.86	0.83	0.86	0.83	0.86	0.82	0.86	0.82	0.87	0.94	0.88	0.91	0.86	0.89	0.84	0.87
165	0.88	0.91	0.86	0.89	0.85	0.89	0.85	0.88	0.84	0.88	0.85	0.89	0.95	0.90	0.92	0.89	0.91	0.87	0.90
170	0.90	0.94	0.89	0.92	0.87	0.92	0.88	0.91	0.87	0.91	0.88	0.91	0.96	0.91	0.93	0.90	0.92	0.89	0.91
175	0.92	0.95	0.91	0.92	0.91	0.91	0.90	0.91	0.90	0.91	0.91	0.91	0.97	0.92	0.93	0.91	0.92	0.90	0.91
180	0.95	0.95	0.92	0.92	0.91	0.91	0.91	0.91	0.91	0.91	0.91	0.91	0.97	0.93	0.93	0.92	0.92	0.91	0.91

C Range: 0 - 360DEG  
 C Interval: 15.0DEG  
 Test Speed: HIGH  
 Temperature: 25.3DEG  
 Operators:  
 Test Date: 2020-05-23

γ Range: 0 - 180DEG  
 γ Interval: 1.0DEG  
 Test System: EVERFINE GO-2000B\_V1 SYSTEM V2.0.291  
 Humidity: 65.0%  
 Test Distance: 7.500m [K=1.0000]  
 Remarks:



EVERFINE GONIOPHOTOMETERS SYSTEM TEST REPORT

LUMINOUS DISTRIBUTION INTENSITY DATA

Test:U:119.9V I:0.0911A P:2.873W PF:0.2630 Lamp Flux:199.752x1 lm		
NAME:	TYPE:	WEIGHT:
SPEC.:	DIM.:	SERIAL No.:
MFR.:	SUR.:	PROTECTION ANGLE:

Table--2

UNIT: cd

C(DEG) γ (DEG)	285	300	315	330	345														
0	85.6	85.4	85.3	85.1	85.1														
5	85.7	85.6	85.5	85.4	85.2														
10	85.1	85.1	84.9	84.6	84.2														
15	83.7	83.8	83.4	82.8	82.0														
20	81.5	81.6	80.9	79.9	78.6														
25	78.3	78.4	77.4	76.0	74.0														
30	73.5	73.7	72.7	71.0	68.6														
35	66.5	67.2	66.3	64.9	62.9														
40	58.0	59.0	58.3	57.6	57.0														
45	49.1	50.4	49.5	49.4	50.2														
50	40.7	42.4	41.2	41.3	42.6														
55	32.4	34.0	33.1	33.4	34.4														
60	24.0	25.4	24.9	25.4	25.9														
65	16.8	17.7	17.5	18.1	18.3														
70	11.3	11.8	11.8	12.3	12.4														
75	7.35	7.71	7.75	8.14	8.21														
80	4.49	4.72	4.78	5.08	5.18														
85	2.35	2.50	2.55	2.75	2.82														
90	0.84	0.92	0.94	0.99	0.98														
95	0.67	0.67	0.67	0.65	0.67														
100	0.66	0.67	0.65	0.65	0.67														
105	0.66	0.67	0.65	0.67	0.66														
110	0.66	0.69	0.65	0.68	0.66														
115	0.66	0.69	0.66	0.69	0.67														
120	0.67	0.71	0.67	0.71	0.69														
125	0.68	0.72	0.69	0.73	0.71														
130	0.72	0.74	0.72	0.75	0.72														
135	0.72	0.76	0.73	0.76	0.73														
140	0.74	0.77	0.74	0.78	0.75														
145	0.77	0.79	0.77	0.80	0.77														
150	0.79	0.82	0.78	0.82	0.79														
155	0.80	0.84	0.80	0.84	0.81														
160	0.84	0.87	0.84	0.87	0.84														
165	0.86	0.89	0.85	0.89	0.86														
170	0.89	0.91	0.88	0.91	0.88														
175	0.90	0.91	0.90	0.91	0.90														
180	0.91	0.91	0.91	0.91	0.91														

C Range: 0 - 360DEG  
 C Interval: 15.0DEG  
 Test Speed: HIGH  
 Temperature:25.3DEG  
 Operators:  
 Test Date:2020-05-23

γ Range: 0 - 180DEG  
 γ Interval: 1.0DEG  
 Test System:EVERFINE GO-2000B\_V1 SYSTEM V2.0.291  
 Humidity:65.0%  
 Test Distance:7.500m [K=1.0000]  
 Remarks: