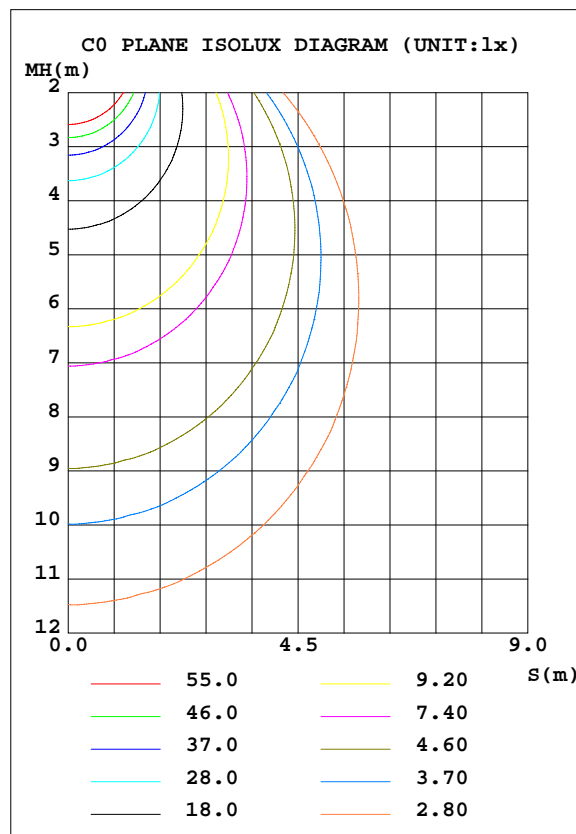
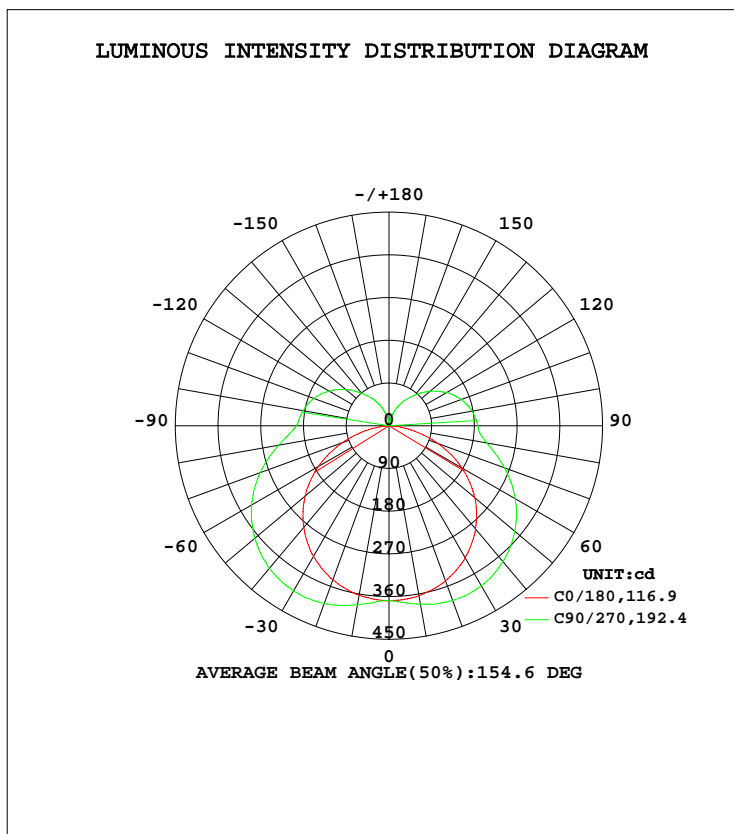


LUMINAIRE PHOTOMETRIC TEST REPORT

Test:U:120.0V I:0.2664A P:29.49W PF:0.9223 Lamp Flux:2112.81x1 lm		
NAME: LED Luminaires	TYPE:	WEIGHT:
SPEC.:	DIM.:	SERIAL No.:
MFR.:	SUR.:	Shielding Angle:

DATA OF LAMP		PHOTOMETRIC DATA Eff: 71.65 lm/W			
MODEL	4907-48	I _{max} (cd)	402.8	S/MH(C0/180)	1.29
NOMINAL POWER(W)	30	LOR(%)	100.0	S/MH(C90/270)	1.57
RATED VOLTAGE(V)	120	TOTAL FLUX(lm)	2112.8	η UP, DN(C0-180)	11.9, 39.4
NOMINAL FLUX(lm)	2112.81	CIE CLASS	SEMI-D.	η UP, DN(C180-360)	11.3, 37.5
LAMPS INSIDE	1	η up(%)	23.2	CIBSE SHR NOM	1.50
TEST VOLTAGE(V)	120	η down(%)	76.8	CIBSE SHR MAX	1.55



C Range: 0 - 360DEG
 C Interval: 22.5DEG
 Test Speed: 10.0deg/s
 Temperature:24.8DEG
 Operators:EAST
 Test Date:2020-01-19

γ Range: 0 - 180DEG
 γ Interval: 1.0DEG
 Test System:GO-R5000_V2 SYSTEM V2.0.351
 Humidity:44%
 Test Distance:2.485m [K=1.0000]
 Remarks:

ZONAL FLUX DIAGRAM

ZONAL FLUX DIAGRAM:

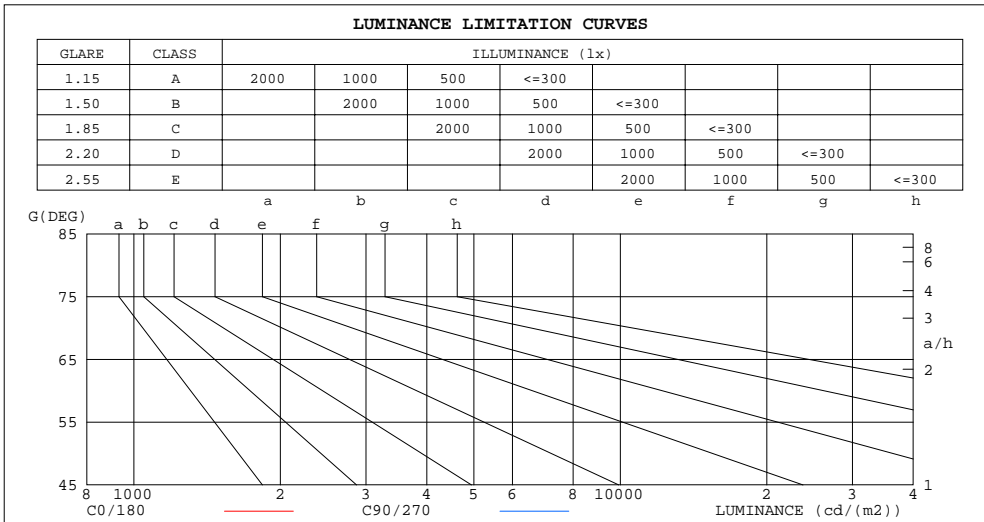
γ	C0	C45	C90	C135	C180	C225	C270	C315	γ	Φ zone	Φ total	lum, lamp
10	362.8	373.6	382.8	375.1	363.6	374.3	381.7	374.2	0- 10	35.47	35.47	1.68,1.68
20	345.5	377.7	398.3	381.0	347.6	375.7	391.6	375.5	10- 20	106.2	141.7	6.71,6.71
30	317.9	372.0	401.7	377.0	321.1	366.8	389.2	366.9	20- 30	171.4	313.1	14.8,14.8
40	279.5	354.7	391.6	361.6	283.6	346.8	373.5	346.0	30- 40	222.8	536.0	25.4,25.4
50	230.6	325.7	368.8	333.7	235.8	313.8	346.0	313.3	40- 50	253.6	789.5	37.4,37.4
60	171.7	284.6	334.1	293.7	177.5	270.0	307.2	269.1	50- 60	259.0	1049	49.6,49.6
70	104.6	233.1	288.4	242.6	110.0	216.3	258.9	215.7	60- 70	237.4	1286	60.9,60.9
80	36.76	175.9	236.0	185.4	41.85	160.3	209.6	160.9	70- 80	192.8	1479	70,70
90	0.4499	134.8	195.2	142.8	0.4229	131.0	187.3	135.3	80- 90	144.7	1623	76.8,76.8
100	0.4785	126.9	183.9	134.0	0.3944	123.8	177.8	127.5	90-100	126.1	1750	82.8,82.8
110	0.9283	113.8	168.4	120.6	0.8599	110.6	162.0	113.7	100-110	112.7	1862	88.1,88.1
120	1.389	94.98	146.2	100.9	1.285	92.27	140.3	94.69	110-120	92.12	1954	92.5,92.5
130	1.850	73.53	118.7	78.55	1.684	71.32	113.1	73.34	120-130	68.60	2023	95.7,95.7
140	2.356	56.33	89.04	59.76	1.921	52.24	84.28	55.45	130-140	45.78	2069	97.9,97.9
150	2.678	39.40	63.51	41.03	2.165	30.51	58.30	41.44	140-150	26.96	2096	99.2,99.2
160	2.663	22.63	37.87	22.45	2.163	9.850	31.96	26.71	150-160	12.83	2109	99.8,99.8
170	2.630	8.303	14.23	6.766	2.211	2.829	8.529	9.112	160-170	3.829	2112	100,100
180	3.432	2.948	0.9048	3.111	3.378	3.300	2.836	2.748	170-180	0.4455	2113	100,100
DEG	LUMINOUS INTENSITY:cd Less than 25% Percent = 19.3 %								UNIT:lm			

C Range: 0 - 360DEG
 C Interval: 22.5DEG
 Test Speed: 10.0deg/s
 Temperature:24.8DEG
 Operators:EAST
 Test Date:2020-01-19

γ Range: 0 - 180DEG
 γ Interval: 1.0DEG
 Test System: GO-R5000_V2 SYSTEM V2.0.351
 Humidity:44%
 Test Distance:2.485m [K=1.0000]
 Remarks:

LUMINANCE LIMITATION CURVES

Test:U:120.0V I:0.2664A P:29.49W PF:0.9223 Lamp Flux:2112.81x1 lm		
NAME: LED Luminaires	TYPE:	WEIGHT:
SPEC.:	DIM.:	SERIAL No.:
MFR.:	SUR.:	Shielding Angle:



LUMINANCE cd/(m2)		
G(DEG)	C0/180	C90/270
85	1237819	24301324
80	2117048	13591822
75	2695638	10139239
70	3058251	8432837
65	3282980	7396272
60	3434371	6682654
55	3524424	6151656
50	3587546	5737266
45	3623993	5398815

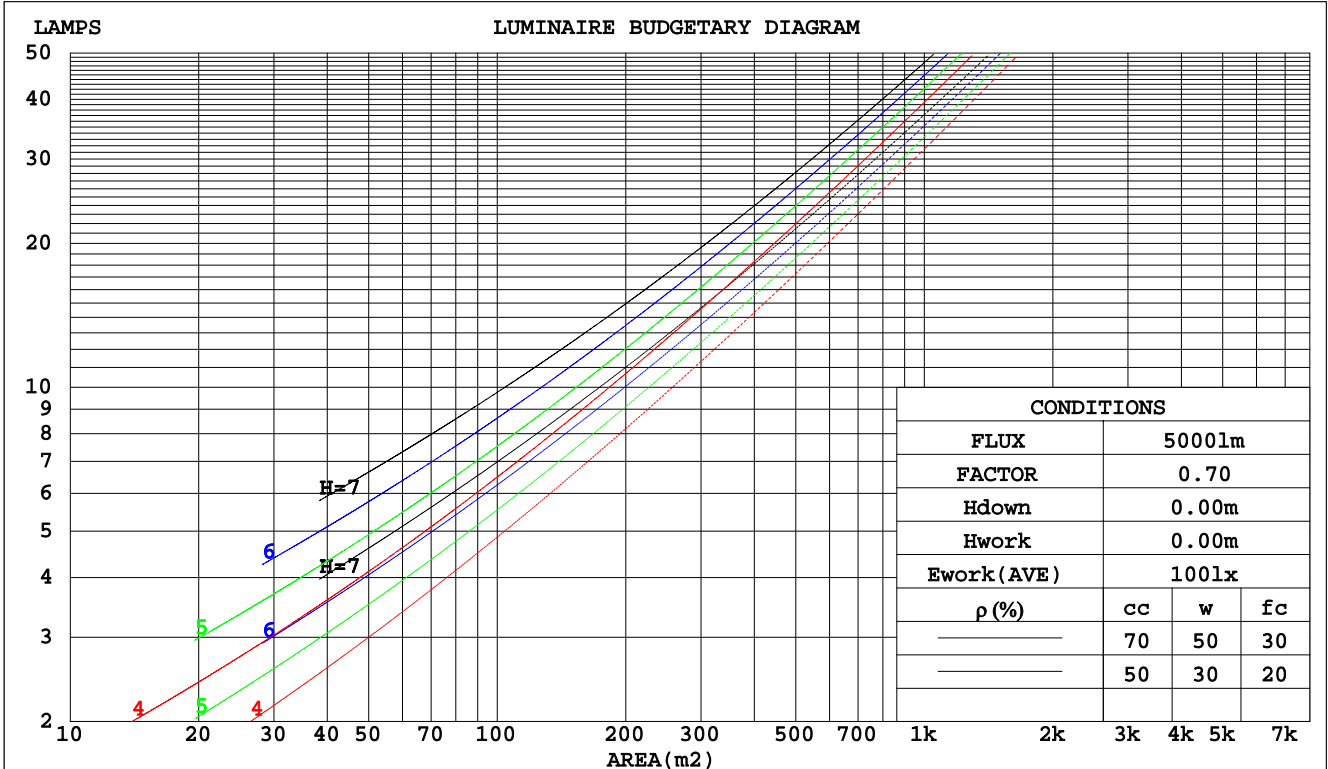
C Range: 0 - 360DEG
 C Interval: 22.5DEG
 Test Speed: 10.0deg/s
 Temperature: 24.8DEG
 Operators: EAST
 Test Date: 2020-01-19

γ Range: 0 - 180DEG
 γ Interval: 1.0DEG
 Test System: GO-R5000_V2 SYSTEM V2.0.351
 Humidity: 44%
 Test Distance: 2.485m [K=1.0000]
 Remarks:

CU AND LUMINAIRE BUDGETARY ESTIMATE DIAGRAM

Test:U:120.0V I:0.2664A P:29.49W PF:0.9223 Lamp Flux:2112.81x1 lm		
NAME: LED Luminaires	TYPE:	WEIGHT:
SPEC.:	DIM.:	SERIAL No.:
MFR.:	SUR.:	Shielding Angle:

pcc	80%			70%			50%			30%			10%			0
	50%	30%	10%	50%	30%	10%	50%	30%	10%	50%	30%	10%	50%	30%	10%	0
pw																
pfc	20%			20%			20%			20%			20%			0
RCR	RCR:Room Cavity Ratio															
	Coefficients of Utilization(CU)															
0.0	1.14	1.14	1.14	1.08	1.08	1.08	.98	.98	.98	.89	.89	.89	.81	.81	.81	.77
1.0	.95	.89	.85	.90	.85	.81	.82	.78	.74	.74	.71	.68	.66	.64	.62	.58
2.0	.81	.73	.66	.77	.70	.64	.69	.64	.59	.63	.58	.54	.56	.53	.50	.46
3.0	.70	.61	.54	.67	.58	.52	.60	.53	.48	.54	.49	.44	.49	.44	.41	.37
4.0	.61	.52	.45	.58	.50	.43	.53	.46	.40	.48	.42	.37	.43	.38	.34	.31
5.0	.54	.45	.38	.52	.43	.36	.47	.40	.34	.42	.36	.31	.38	.33	.29	.26
6.0	.48	.39	.32	.46	.38	.31	.42	.35	.29	.38	.32	.27	.34	.29	.25	.22
7.0	.44	.34	.28	.42	.33	.27	.38	.31	.25	.35	.28	.24	.31	.26	.22	.20
8.0	.39	.31	.25	.38	.30	.24	.35	.27	.22	.31	.25	.21	.29	.23	.19	.17
9.0	.36	.28	.22	.34	.27	.21	.32	.25	.20	.29	.23	.19	.26	.21	.17	.15
10.0	.33	.25	.20	.32	.24	.19	.29	.22	.18	.27	.21	.17	.24	.19	.16	.14



C Range: 0 - 360DEG
 C Interval: 22.5DEG
 Test Speed: 10.0deg/s
 Temperature:24.8DEG
 Operators:EAST
 Test Date:2020-01-19

γ Range: 0 - 180DEG
 γ Interval: 1.0DEG
 Test System: GO-R5000_V2 SYSTEM V2.0.351
 Humidity:44%
 Test Distance:2.485m [K=1.0000]
 Remarks:

WEC AND CCEC

Test:U:120.0V I:0.2664A P:29.49W PF:0.9223 Lamp Flux:2112.81x1 lm														
NAME: LED Luminaires					TYPE:					WEIGHT:				
SPEC.:					DIM.:					SERIAL No.:				
MFR.:					SUR.:					Shielding Angle:				

ρcc	80%			70%			50%			30%			10%			0
ρw	50%	30%	10%	50%	30%	10%	50%	30%	10%	50%	30%	10%	50%	30%	10%	0
ρfc	20%			20%			20%			20%			20%			0
RCR	RCR:Room Cavity Ratio						Wall Exitance Coefficients(WEC)									
0.0																
1.0	.380	.216	.068	.365	.208	.066	.339	.194	.062	.314	.181	.058	.292	.169	.054	
2.0	.331	.181	.056	.318	.175	.054	.293	.163	.051	.271	.152	.048	.250	.142	.045	
3.0	.294	.157	.047	.283	.151	.046	.261	.141	.043	.240	.132	.040	.222	.123	.038	
4.0	.265	.138	.041	.255	.133	.039	.235	.125	.037	.216	.116	.035	.199	.108	.033	
5.0	.241	.123	.036	.232	.119	.035	.214	.111	.033	.197	.104	.031	.181	.097	.029	
6.0	.221	.111	.032	.213	.107	.031	.196	.100	.029	.180	.094	.028	.166	.087	.026	
7.0	.204	.101	.029	.196	.098	.028	.181	.091	.026	.166	.085	.025	.153	.080	.023	
8.0	.189	.093	.026	.182	.090	.025	.168	.084	.024	.155	.078	.023	.142	.073	.021	
9.0	.176	.085	.024	.170	.083	.023	.157	.077	.022	.144	.072	.021	.133	.067	.019	
10.0	.165	.079	.022	.159	.077	.021	.147	.072	.020	.135	.067	.019	.125	.063	.018	

ρcc	80%			70%			50%			30%			10%			0
ρw	50%	30%	10%	50%	30%	10%	50%	30%	10%	50%	30%	10%	50%	30%	10%	0
ρfc	20%			20%			20%			20%			20%			0
RCR	RCR:Room Cavity Ratio						Ceiling Cavity Exitance Coefficients(CCEC)									
0.0	.367	.367	.367	.314	.314	.314	.214	.214	.214	.123	.123	.123	.039	.039	.039	
1.0	.363	.333	.307	.311	.286	.264	.212	.197	.183	.122	.114	.106	.039	.037	.034	
2.0	.357	.311	.272	.305	.268	.236	.209	.185	.164	.121	.108	.096	.039	.035	.031	
3.0	.349	.295	.251	.299	.254	.218	.206	.177	.153	.119	.103	.090	.038	.033	.029	
4.0	.342	.282	.237	.293	.244	.206	.202	.170	.145	.117	.100	.086	.038	.032	.028	
5.0	.334	.273	.227	.287	.236	.198	.198	.165	.139	.115	.097	.083	.037	.032	.027	
6.0	.327	.265	.220	.281	.229	.192	.194	.160	.136	.112	.094	.081	.036	.031	.027	
7.0	.320	.258	.215	.275	.224	.187	.190	.157	.133	.110	.092	.079	.036	.030	.026	
8.0	.313	.253	.211	.270	.219	.184	.187	.154	.131	.109	.091	.078	.035	.030	.026	
9.0	.307	.248	.208	.265	.215	.182	.183	.151	.129	.107	.089	.077	.035	.029	.025	
10.0	.301	.244	.206	.260	.212	.179	.180	.149	.128	.105	.088	.076	.034	.029	.025	

C Range: 0 - 360DEG
 C Interval: 22.5DEG
 Test Speed: 10.0deg/s
 Temperature:24.8DEG
 Operators:EAST
 Test Date:2020-01-19

γ Range: 0 - 180DEG
 γ Interval: 1.0DEG
 Test System: GO-R5000_V2 SYSTEM V2.0.351
 Humidity:44%
 Test Distance:2.485m [K=1.0000]
 Remarks:

UGR(Unified Glare Rating) Table

Test:U:120.0V I:0.2664A P:29.49W PF:0.9223 Lamp Flux:2112.81x1 lm										
NAME: LED Luminaires					TYPE:			WEIGHT:		
SPEC.:					DIM.:			SERIAL No.:		
MFR.:					SUR.:			Shielding Angle:		
ceiling/cavity	0.7	0.7	0.5	0.5	0.3	0.7	0.7	0.5	0.5	0.3
walls	0.5	0.3	0.5	0.3	0.3	0.5	0.3	0.5	0.3	0.3
working plane	0.2	0.2	0.2	0.2	0.2	0.2	0.2	0.2	0.2	0.2
Room dimensions	Viewed crosswise					Viewed endwise				
x = 2H y = 2H	40.0	41.3	40.5	41.9	42.5	42.4	43.8	43.0	44.3	45.0
3H	41.5	42.7	42.1	43.3	44.0	45.1	46.3	45.7	46.9	47.6
4H	42.1	43.2	42.7	43.8	44.6	46.5	47.6	47.1	48.3	49.0
6H	42.4	43.5	43.1	44.2	44.9	48.0	49.1	48.6	49.7	50.5
8H	42.5	43.6	43.2	44.2	45.0	48.8	49.9	49.5	50.5	51.3
12H	42.5	43.5	43.2	44.2	45.0	49.8	50.8	50.5	51.5	52.2
4H 2H	41.3	42.4	41.9	43.1	43.8	43.0	44.2	43.6	44.8	45.5
3H	43.1	44.1	43.8	44.8	45.5	45.9	46.9	46.5	47.5	48.3
4H	43.9	44.8	44.6	45.5	46.3	47.5	48.4	48.2	49.1	49.9
6H	44.4	45.3	45.1	46.0	46.8	49.2	50.0	49.9	50.7	51.6
8H	44.6	45.4	45.3	46.1	47.0	50.2	50.9	50.9	51.7	52.5
12H	44.7	45.4	45.4	46.1	47.0	51.3	52.0	52.0	52.7	53.6
8H 4H	45.0	45.7	45.7	46.5	47.3	47.8	48.6	48.5	49.3	50.2
6H	45.9	46.6	46.7	47.3	48.2	49.8	50.5	50.6	51.2	52.1
8H	46.3	46.9	47.1	47.7	48.6	51.0	51.6	51.8	52.4	53.3
12H	46.6	47.1	47.4	47.9	48.8	52.4	52.9	53.1	53.7	54.6
12H 4H	45.3	46.0	46.0	46.8	47.6	47.8	48.5	48.6	49.3	50.1
6H	46.5	47.1	47.3	47.9	48.8	49.9	50.5	50.7	51.3	52.2
8H	47.1	47.6	47.9	48.4	49.3	51.2	51.7	52.0	52.5	53.4
Variations with the observer position at spacings:										
S = 1.0H	+ 0.1 / - 0.1					+ 0.1 / - 0.1				
1.5H	+ 0.2 / - 0.3					+ 0.2 / - 0.3				
2.0H	+ 0.3 / - 0.5					+ 0.2 / - 0.4				

CIE Pub.117 Corrected 2113 lm Total Lamp Luminous Flux.(8log(F/F0) = 2.6)

C Range: 0 - 360DEG
 C Interval: 22.5DEG
 Test Speed: 10.0deg/s
 Temperature:24.8DEG
 Operators:EAST
 Test Date:2020-01-19

γ Range: 0 - 180DEG
 γ Interval: 1.0DEG
 Test System: GO-R5000_V2 SYSTEM V2.0.351
 Humidity:44%
 Test Distance:2.485m [K=1.0000]
 Remarks:

UTILIZATION FACTORS TABLE

Test:U:120.0V I:0.2664A P:29.49W PF:0.9223 Lamp Flux:2112.81x1 lm		
NAME: LED Luminaires	TYPE:	WEIGHT:
SPEC.:	DIM.:	SERIAL No.:
MFR.:	SUR.:	Shielding Angle:

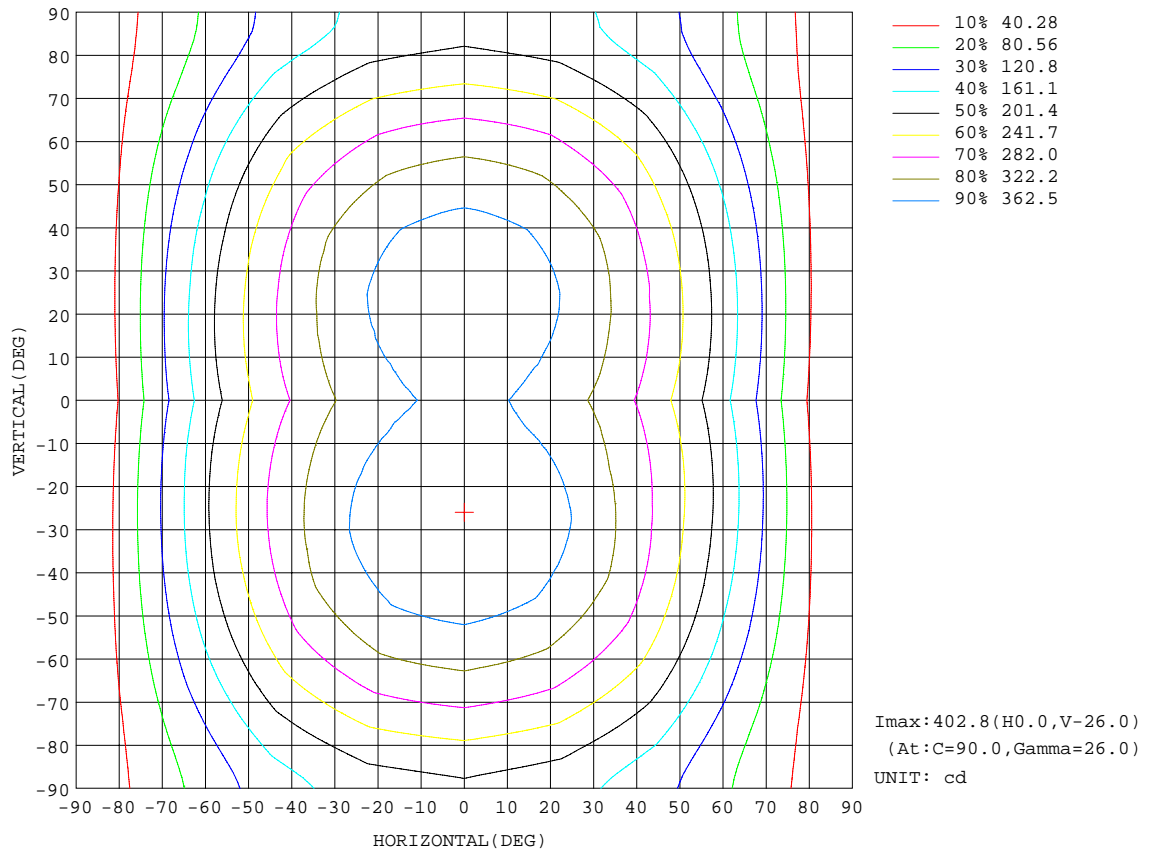
REFLECTANCE										
Ceiling	0.8	0.8	0.8	0.7	0.7	0.7	0.5	0.5	0.5	0
Walls	0.7	0.5	0.3	0.7	0.5	0.3	0.7	0.5	0.3	0
Working plane	0.2	0.2	0.2	0.2	0.2	0.2	0.2	0.2	0.2	0
ROOM INDEX	UTILIZATION FACTORS(PERCENT) $k(RI) \times RCR = 5$									
k = 0.60	46	33	26	44	33	26	42	31	25	18
0.80	55	42	34	53	41	33	50	39	32	24
1.00	63	49	41	60	48	40	56	48	39	30
1.25	70	57	48	67	55	47	62	52	45	35
1.50	75	62	54	72	61	52	66	57	50	39
2.00	82	71	63	79	69	61	72	64	58	45
2.50	87	77	68	83	74	66	76	69	62	49
3.00	91	81	74	87	78	71	79	72	67	52
4.00	96	87	81	91	84	78	83	77	73	57
5.00	99	92	86	94	88	82	86	81	76	60
ROOM INDEX	UF(total)									Direct
According to DIN EN 13032-2 2004			Suspended				SHRNOM = 1.25			

C Range: 0 - 360DEG
 C Interval: 22.5DEG
 Test Speed: 10.0deg/s
 Temperature:24.8DEG
 Operators:EAST
 Test Date:2020-01-19

γ Range: 0 - 180DEG
 γ Interval: 1.0DEG
 Test System: GO-R5000_V2 SYSTEM V2.0.351
 Humidity:44%
 Test Distance:2.485m [K=1.0000]
 Remarks:

ISOCANDELA DIAGRAM

Test:U:120.0V I:0.2664A P:29.49W PF:0.9223 Lamp Flux:2112.81x1 lm		
NAME: LED Luminaires	TYPE:	WEIGHT:
SPEC.:	DIM.:	SERIAL No.:
MFR.:	SUR.:	Shielding Angle:

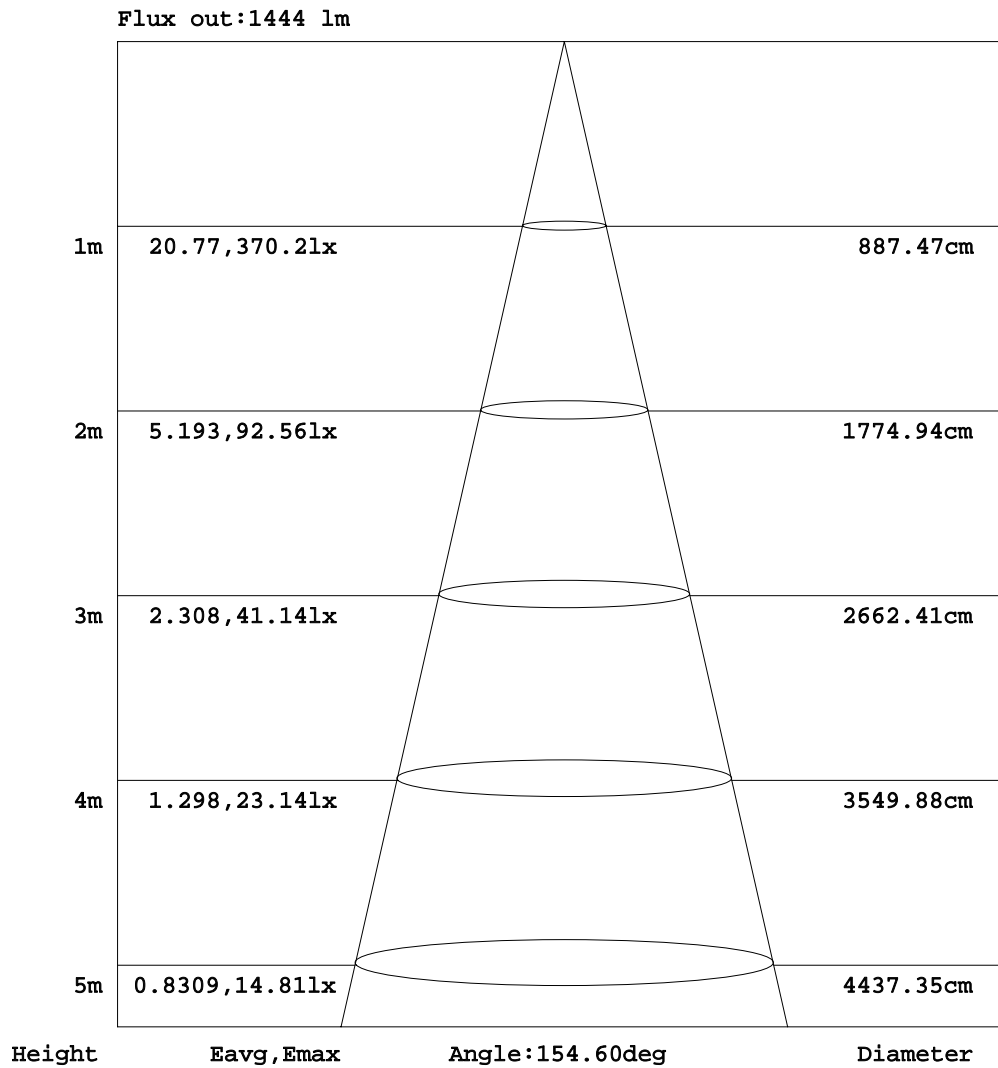


C Range: 0 - 360DEG
 C Interval: 22.5DEG
 Test Speed: 10.0deg/s
 Temperature: 24.8DEG
 Operators: EAST
 Test Date: 2020-01-19

γ Range: 0 - 180DEG
 γ Interval: 1.0DEG
 Test System: GO-R5000_V2 SYSTEM V2.0.351
 Humidity: 44%
 Test Distance: 2.485m [K=1.0000]
 Remarks:

AAI Figure

Test:U:120.0V I:0.2664A P:29.49W PF:0.9223 Lamp Flux:2112.81x1 lm		
NAME: LED Luminaires	TYPE:	WEIGHT:
SPEC.:	DIM.:	SERIAL No.:
MFR.:	SUR.:	Shielding Angle:



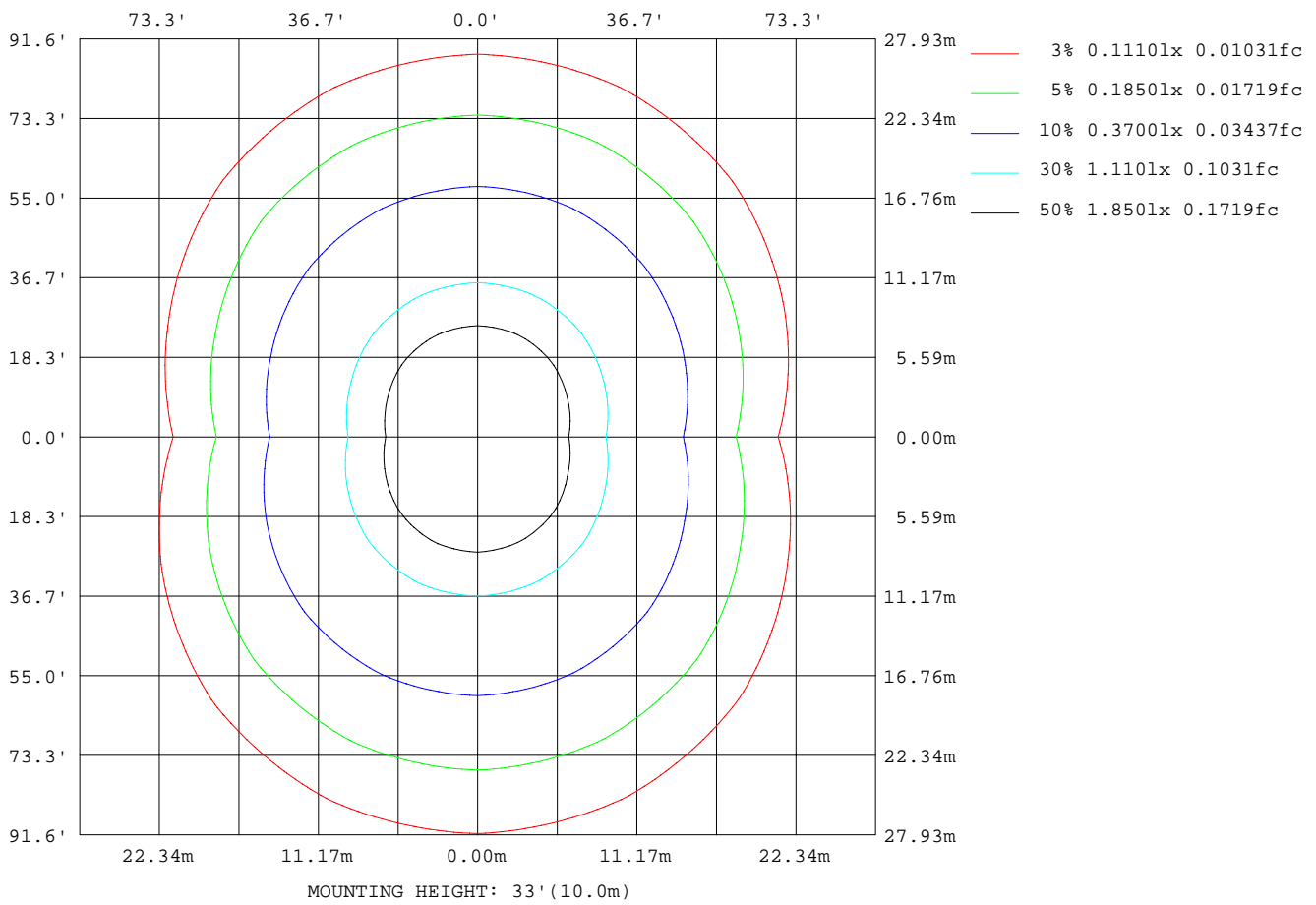
Note:The Curves indicate the illuminated area and the average illumination when the luminaire is at different distance.

C Range: 0 - 360DEG
 C Interval: 22.5DEG
 Test Speed: 10.0deg/s
 Temperature:24.8DEG
 Operators:EAST
 Test Date:2020-01-19

γ Range: 0 - 180DEG
 γ Interval: 1.0DEG
 Test System: GO-R5000_V2 SYSTEM V2.0.351
 Humidity:44%
 Test Distance:2.485m [K=1.0000]
 Remarks:

ISOLUX DIAGRAM

Test:U:120.0V I:0.2664A P:29.49W PF:0.9223 Lamp Flux:2112.81x1 lm		
NAME: LED Luminaires	TYPE:	WEIGHT:
SPEC.:	DIM.:	SERIAL No.:
MFR.:	SUR.:	Shielding Angle:



C Range: 0 - 360DEG
 C Interval: 22.5DEG
 Test Speed: 10.0deg/s
 Temperature:24.8DEG
 Operators:EAST
 Test Date:2020-01-19

γ Range: 0 - 180DEG
 γ Interval: 1.0DEG
 Test System: GO-R5000_V2 SYSTEM V2.0.351
 Humidity:44%
 Test Distance:2.485m [K=1.0000]
 Remarks:

LED Avg.L Report

Test:U:120.0V I:0.2664A P:29.49W PF:0.9223 Lamp Flux:2112.81x1 lm		
NAME: LED Luminaires	TYPE:	WEIGHT:
SPEC.:	DIM.:	SERIAL No.:
MFR.:	SUR.:	Shielding Angle:

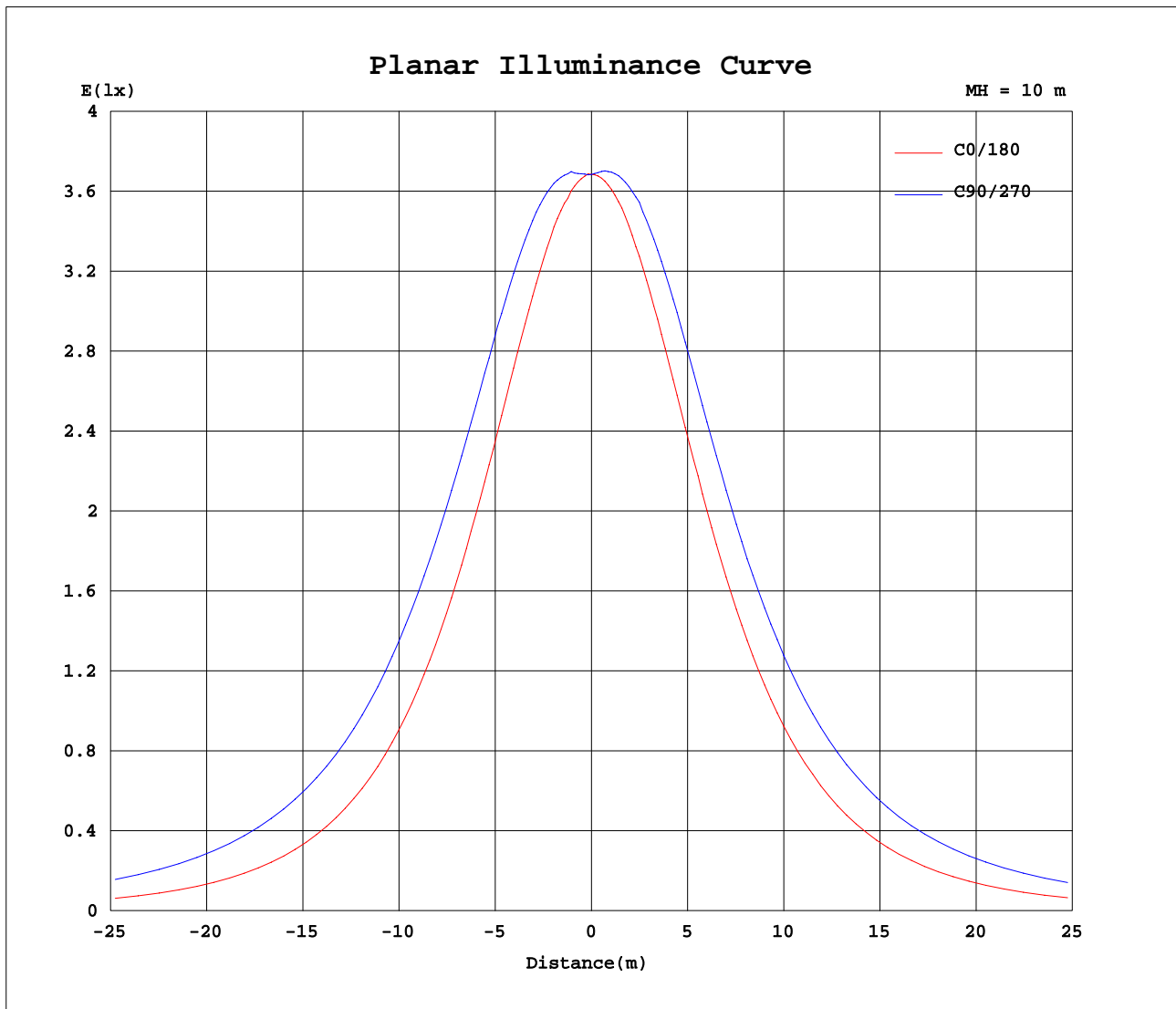
AvgL	cd/m2
L_0~180(65)av	3357848
L_0~180(75)av	2801725
L_0~180(85)av	1466109
L_90~270(65)av	7057790
L_90~270(75)av	9574006
L_90~270(85)av	23206759
L_45(65)av	6024877
L_45(75)av	7660484
L_45(85)av	16965931

Standard: GB/T 29293-2012

C Range: 0 - 360DEG
 C Interval: 22.5DEG
 Test Speed: 10.0deg/s
 Temperature:24.8DEG
 Operators:EAST
 Test Date:2020-01-19

γ Range: 0 - 180DEG
 γ Interval: 1.0DEG
 Test System: GO-R5000_V2 SYSTEM V2.0.351
 Humidity:44%
 Test Distance:2.485m [K=1.0000]
 Remarks:

Planar Illuminance Curve



C Range: 0 - 360DEG
 C Interval: 22.5DEG
 Test Speed: 10.0deg/s
 Temperature: 24.8DEG
 Operators: EAST
 Test Date: 2020-01-19

γ Range: 0 - 180DEG
 γ Interval: 1.0DEG
 Test System: GO-R5000_V2 SYSTEM V2.0.351
 Humidity: 44%
 Test Distance: 2.485m [K=1.0000]
 Remarks:

LUMINOUS DISTRIBUTION INTENSITY DATA

Test:U:120.0V I:0.2664A P:29.49W PF:0.9223 Lamp Flux:2112.81x1 lm		
NAME: LED Luminaires	TYPE:	WEIGHT:
SPEC.:	DIM.:	SERIAL No.:
MFR.:	SUR.:	Shielding Angle:

Table--1

UNIT: cd

C(DEG) γ (DEG)	0	22.5	45	67.5	90	112.5	135	157.5	180	202.5	225	247.5	270	292.5	315	337.5			
0	368	368	368	368	368	368	368	368	368	368	368	368	368	368	368	368			
5	367	367	370	372	373	372	371	368	367	370	371	374	374	373	371	368			
10	363	366	374	380	383	382	375	368	364	368	374	380	382	380	374	368			
15	355	363	376	387	392	389	379	366	357	365	376	385	388	384	376	364			
20	346	357	378	392	398	394	381	362	348	360	376	388	392	387	375	359			
25	333	350	376	394	402	397	381	355	336	353	373	387	392	387	373	351			
30	318	340	372	393	402	397	377	347	321	342	367	383	389	383	367	340			
35	300	328	365	389	398	392	371	335	304	329	358	377	383	376	358	327			
40	279	313	355	382	392	385	362	322	284	313	347	367	374	367	346	311			
45	256	295	342	371	382	375	349	305	261	294	332	354	361	354	331	293			
50	231	274	326	357	369	362	334	285	236	273	314	338	346	338	313	272			
55	202	251	307	341	353	345	315	262	208	249	293	320	328	319	293	247			
60	172	225	285	321	334	325	294	237	178	222	270	299	307	298	269	221			
65	139	197	260	299	313	303	269	209	145	193	246	274	284	274	243	192			
70	105	167	233	274	288	279	243	179	110	161	216	249	259	248	216	161			
75	69.8	135	204	247	262	252	214	147	75.3	129	188	222	233	222	187	128			
80	36.8	104	176	220	236	225	185	116	41.8	97.9	160	198	210	198	161	98.1			
85	10.8	77.3	150	196	212	200	160	88.3	14.8	73.3	140	179	193	181	142	75.7			
90	0.45	63.4	135	179	195	183	143	72.3	0.42	62.7	131	173	187	175	135	67.9			
95	0.33	60.8	130	174	189	178	138	69.4	0.29	60.8	128	169	183	171	132	65.8			
100	0.48	57.8	127	169	184	173	134	66.4	0.39	57.6	124	164	178	166	128	62.2			
105	0.70	53.1	121	163	177	166	128	61.6	0.64	53.0	118	158	171	159	121	57.2			
110	0.93	47.5	114	154	168	158	121	55.3	0.86	47.5	111	149	162	151	114	51.2			
115	1.17	42.3	105	145	158	147	111	49.1	1.03	41.9	102	140	152	141	105	45.0			
120	1.39	38.8	95.0	133	146	136	101	44.2	1.29	37.6	92.3	127	140	129	94.7	40.0			
125	1.63	35.2	84.2	120	133	123	89.8	40.0	1.45	33.7	82.0	115	127	116	84.1	35.7			
130	1.85	31.4	73.5	106	119	109	78.5	35.6	1.68	29.5	71.3	102	113	103	73.3	31.4			
135	2.09	27.4	64.6	92.9	104	95.2	68.5	30.5	1.79	24.9	61.4	88.8	98.8	90.1	63.3	27.3			
140	2.36	23.2	56.3	79.0	89.0	81.1	59.8	25.6	1.92	19.9	52.2	74.8	84.3	76.8	55.5	23.7			
145	2.58	19.3	47.9	68.3	75.7	69.8	50.7	21.1	2.13	14.2	42.0	62.4	70.5	65.8	48.3	21.2			
150	2.68	15.7	39.4	56.7	63.5	58.1	41.0	17.5	2.17	8.50	30.5	49.7	58.3	55.4	41.4	19.4			
155	2.71	12.3	30.8	45.1	50.6	46.1	31.8	12.7	2.21	4.16	19.3	36.4	45.1	44.5	34.4	17.6			
160	2.66	9.21	22.6	33.6	37.9	34.3	22.5	8.17	2.16	2.54	9.85	23.0	32.0	33.0	26.7	14.8			
165	2.57	6.30	14.5	22.4	25.4	22.9	12.7	5.61	2.10	2.16	4.82	11.5	19.1	21.4	17.7	10.3			
170	2.63	3.88	8.30	12.0	14.2	11.0	6.77	3.67	2.21	2.20	2.83	5.15	8.53	11.2	9.11	5.93			
175	2.95	3.12	4.00	5.32	6.12	3.45	3.86	3.24	2.77	2.76	2.74	2.97	2.76	4.11	3.78	3.14			
180	3.43	3.34	2.95	2.50	0.90	2.83	3.11	3.39	3.38	3.37	3.30	3.09	2.84	1.70	2.75	3.13			

C Range: 0 - 360DEG
 C Interval: 22.5DEG
 Test Speed: 10.0deg/s
 Temperature:24.8DEG
 Operators:EAST
 Test Date:2020-01-19

γ Range: 0 - 180DEG
 γ Interval: 1.0DEG
 Test System: GO-R5000_V2 SYSTEM V2.0.351
 Humidity:44%
 Test Distance:2.485m [K=1.0000]
 Remarks: