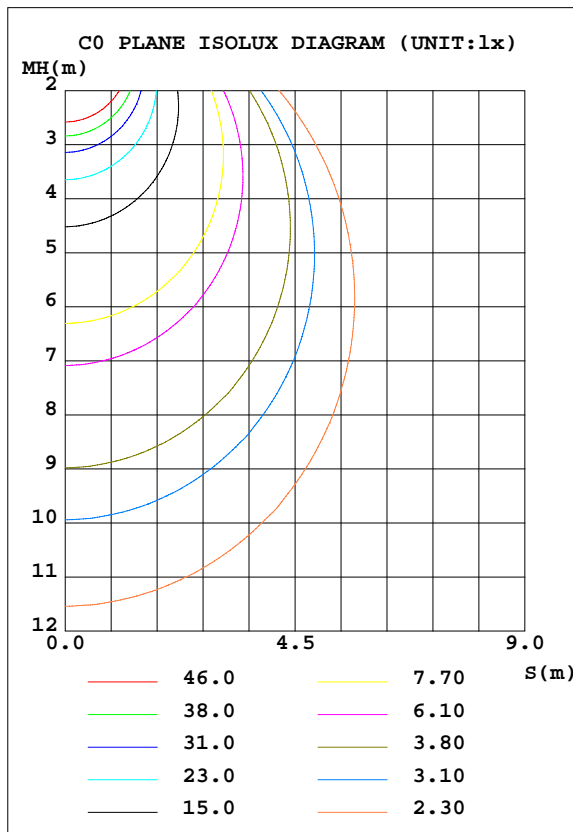
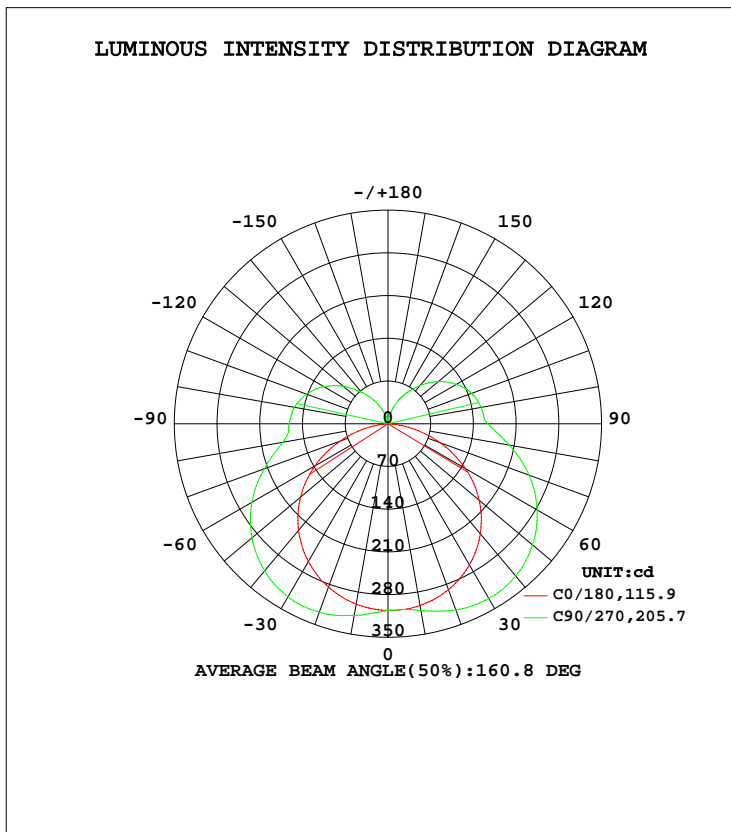


LUMINAIRE PHOTOMETRIC TEST REPORT

Test:U:120.1V I:0.2107A P:23.84W PF:0.9425 Lamp Flux:1759.39x1 lm		
NAME: LED Luminaires	TYPE:	WEIGHT:
SPEC.:	DIM.:	SERIAL No.:
MFR.:	SUR.:	Shielding Angle:

DATA OF LAMP		PHOTOMETRIC DATA Eff: 73.80 lm/W			
MODEL	4907-36	I _{max} (cd)	330.7	S/MH(C0/180)	1.30
NOMINAL POWER(W)	30	LOR(%)	100.0	S/MH(C90/270)	1.63
RATED VOLTAGE(V)	120	TOTAL FLUX(lm)	1759.4	η UP, DN(C0-180)	11.2, 37.4
NOMINAL FLUX(lm)	1759.39	CIE CLASS	SEMI-D.	η UP, DN(C180-360)	12.3, 39.1
LAMPS INSIDE	1	η up(%)	23.5	CIBSE SHR NOM	1.50
TEST VOLTAGE(V)	120	η down(%)	76.5	CIBSE SHR MAX	1.55



C Range: 0 - 360DEG
 C Interval: 22.5DEG
 Test Speed: 10.0deg/s
 Temperature: 24.8DEG
 Operators: EAST
 Test Date: 2020-01-19

γ Range: 0 - 180DEG
 γ Interval: 1.0DEG
 Test System: GO-R5000_V2 SYSTEM V2.0.351
 Humidity: 44%
 Test Distance: 2.485m [K=1.0000]
 Remarks:

ZONAL FLUX DIAGRAM

ZONAL FLUX DIAGRAM:

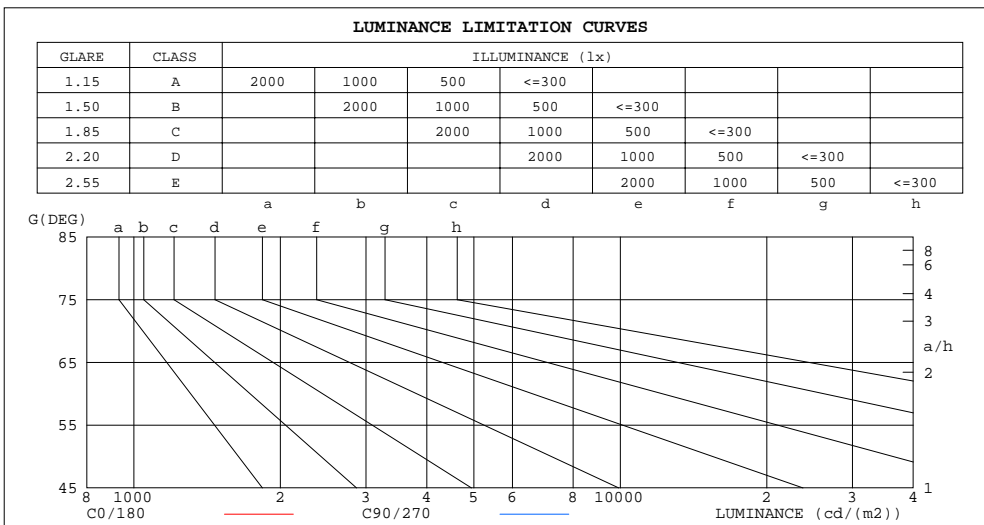
γ	C0	C45	C90	C135	C180	C225	C270	C315	γ	Φ zone	Φ total	lum, lamp
10	300.1	312.3	319.0	313.3	302.3	305.9	310.8	303.8	0- 10	29.34	29.34	1.67,1.67
20	284.8	312.6	328.6	316.2	289.4	308.9	324.4	305.5	10- 20	87.63	117.0	6.65,6.65
30	260.7	305.3	327.5	310.0	266.9	307.2	330.5	302.1	20- 30	141.5	258.5	14.7,14.7
40	228.0	286.8	314.4	293.4	235.4	295.8	325.5	289.7	30- 40	184.4	442.9	25.2,25.2
50	187.0	258.8	290.9	265.8	195.0	274.6	309.0	267.7	40- 50	210.1	653.0	37.1,37.1
60	138.4	220.4	257.4	228.2	146.8	242.9	282.2	235.5	50- 60	214.9	867.9	49.3,49.3
70	83.76	174.6	215.8	182.2	90.86	201.8	245.6	194.4	60- 70	197.2	1065	60.5,60.5
80	28.62	128.7	175.2	134.8	34.37	154.3	202.0	147.8	70- 80	160.3	1225	69.7,69.7
90	0.2768	112.1	161.9	115.4	0.3013	114.8	163.9	111.1	80- 90	121.1	1347	76.5,76.5
100	0.3087	106.5	155.5	109.7	0.2568	109.0	154.8	106.7	90-100	106.2	1453	82.6,82.6
110	0.4105	93.99	142.0	97.57	0.3632	101.7	146.0	99.34	100-110	96.35	1549	88,88
120	0.6341	75.13	121.5	78.86	0.5147	87.79	129.5	85.62	110-120	79.16	1628	92.5,92.5
130	0.8752	53.82	95.50	57.05	0.6831	69.40	107.7	67.91	120-130	58.60	1687	95.9,95.9
140	1.234	37.63	66.86	39.97	0.9486	51.07	81.69	52.13	130-140	38.23	1725	98,98
150	1.558	21.87	42.76	22.97	1.152	30.92	56.75	40.29	140-150	21.63	1747	99.3,99.3
160	1.578	10.07	19.98	10.24	1.144	10.94	32.16	26.55	150-160	9.719	1756	99.8,99.8
170	1.430	2.491	5.319	2.207	1.098	3.214	10.90	10.77	160-170	2.685	1759	100,100
180	1.779	1.503	0.6225	1.445	1.743	1.703	1.398	1.410	170-180	0.2909	1759	100,100
DEG	LUMINOUS INTENSITY:cd Less than 25% Percent = 20.4 %								UNIT:lm			

C Range: 0 - 360DEG
 C Interval: 22.5DEG
 Test Speed: 10.0deg/s
 Temperature:24.8DEG
 Operators:EAST
 Test Date:2020-01-19

γ Range: 0 - 180DEG
 γ Interval: 1.0DEG
 Test System: GO-R5000_V2 SYSTEM V2.0.351
 Humidity:44%
 Test Distance:2.485m [K=1.0000]
 Remarks:

LUMINANCE LIMITATION CURVES

Test:U:120.1V I:0.2107A P:23.84W PF:0.9425 Lamp Flux:1759.39x1 lm		
NAME: LED Luminaires	TYPE:	WEIGHT:
SPEC.:	DIM.:	SERIAL No.:
MFR.:	SUR.:	Shielding Angle:



LUMINANCE cd/(m2)		
G (DEG)	C0/180	C90/270
85	879889	18781130
80	1649450	10085036
75	2160248	7491141
70	2451133	6309275
65	2643449	5613672
60	2770812	5146306
55	2856192	4794139
50	2911922	4523724
45	2952293	4294041

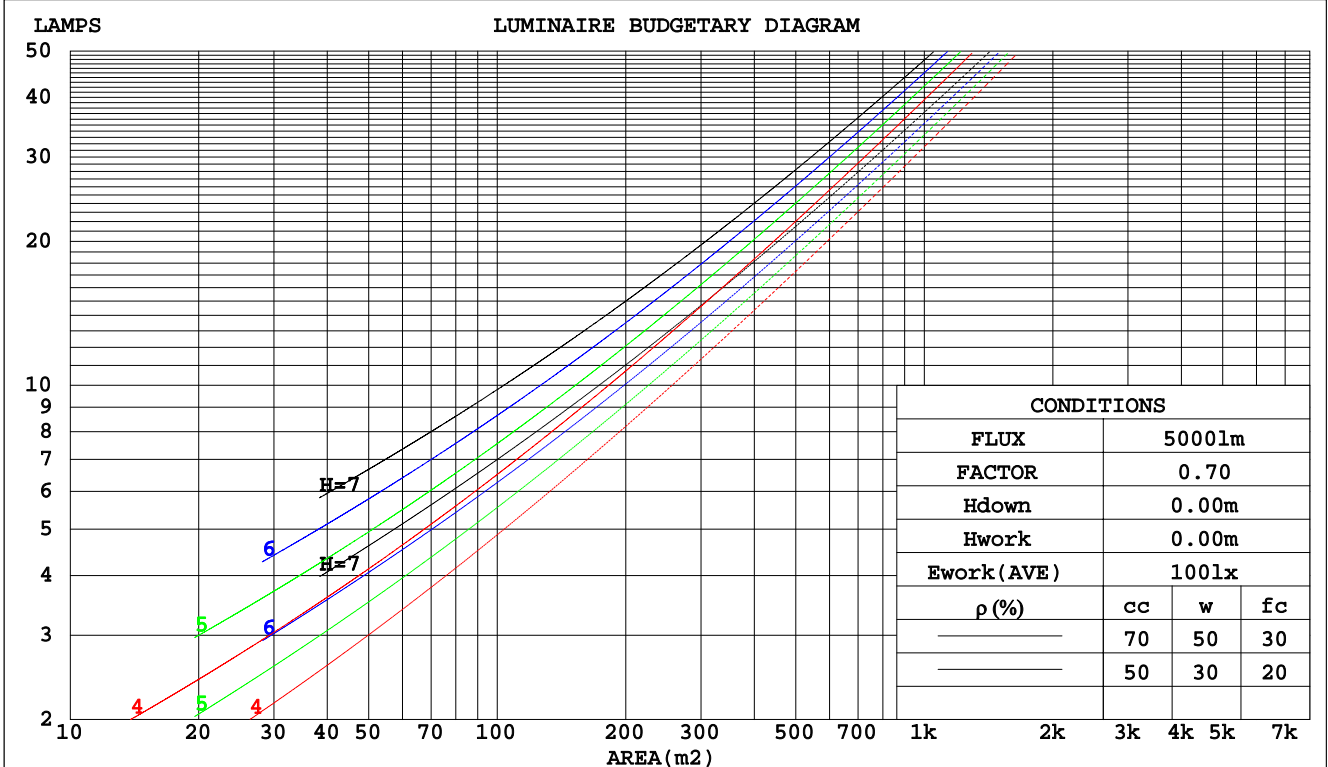
C Range: 0 - 360DEG
 C Interval: 22.5DEG
 Test Speed: 10.0deg/s
 Temperature: 24.8DEG
 Operators: EAST
 Test Date: 2020-01-19

γ Range: 0 - 180DEG
 γ Interval: 1.0DEG
 Test System: GO-R5000_V2 SYSTEM V2.0.351
 Humidity: 44%
 Test Distance: 2.485m [K=1.0000]
 Remarks:

CU AND LUMINAIRE BUDGETARY ESTIMATE DIAGRAM

Test:U:120.1V I:0.2107A P:23.84W PF:0.9425 Lamp Flux:1759.39x1 lm		
NAME: LED Luminaires	TYPE:	WEIGHT:
SPEC.:	DIM.:	SERIAL No.:
MFR.:	SUR.:	Shielding Angle:

pcc	80%			70%			50%			30%			10%			0
pw	50%	30%	10%	50%	30%	10%	50%	30%	10%	50%	30%	10%	50%	30%	10%	0
pfc	20%			20%			20%			20%			20%			0
RCR	RCR:Room Cavity Ratio						Coefficients of Utilization(CU)									
0.0	1.13	1.13	1.13	1.08	1.08	1.08	.98	.98	.98	.89	.89	.89	.80	.80	.80	.77
1.0	.95	.89	.85	.90	.85	.81	.81	.78	.74	.73	.70	.68	.66	.64	.62	.58
2.0	.81	.73	.66	.77	.70	.64	.69	.64	.59	.62	.58	.54	.56	.53	.49	.46
3.0	.70	.61	.54	.66	.58	.52	.60	.53	.48	.54	.49	.44	.49	.44	.40	.37
4.0	.61	.52	.45	.58	.50	.43	.53	.46	.40	.48	.42	.37	.43	.38	.34	.31
5.0	.54	.45	.38	.52	.43	.36	.47	.39	.34	.42	.36	.31	.38	.33	.29	.26
6.0	.48	.39	.32	.46	.37	.31	.42	.35	.29	.38	.32	.27	.34	.29	.25	.22
7.0	.43	.34	.28	.42	.33	.27	.38	.31	.25	.34	.28	.24	.31	.26	.22	.19
8.0	.39	.31	.25	.38	.30	.24	.34	.27	.22	.31	.25	.21	.28	.23	.19	.17
9.0	.36	.28	.22	.34	.27	.21	.32	.25	.20	.29	.23	.19	.26	.21	.17	.15
10.0	.33	.25	.20	.32	.24	.19	.29	.22	.18	.27	.21	.17	.24	.19	.16	.14



C Range: 0 - 360DEG
 C Interval: 22.5DEG
 Test Speed: 10.0deg/s
 Temperature:24.8DEG
 Operators:EAST
 Test Date:2020-01-19

γ Range: 0 - 180DEG
 γ Interval: 1.0DEG
 Test System: GO-R5000_V2 SYSTEM V2.0.351
 Humidity:44%
 Test Distance:2.485m [K=1.0000]
 Remarks:

WEC AND CCEC

Test:U:120.1V I:0.2107A P:23.84W PF:0.9425 Lamp Flux:1759.39x1 lm		
NAME: LED Luminaires	TYPE:	WEIGHT:
SPEC.:	DIM.:	SERIAL No.:
MFR.:	SUR.:	Shielding Angle:

ρcc	80%			70%			50%			30%			10%			0
ρw	50%	30%	10%	50%	30%	10%	50%	30%	10%	50%	30%	10%	50%	30%	10%	0
ρfc	20%			20%			20%			20%			20%			0
RCR	RCR:Room Cavity Ratio						Wall Exitance Coefficients(WEC)									
0.0																
1.0	.380	.216	.068	.366	.209	.066	.339	.194	.062	.314	.181	.058	.291	.169	.054	
2.0	.331	.181	.056	.318	.175	.054	.293	.163	.051	.271	.152	.048	.250	.141	.045	
3.0	.294	.157	.047	.283	.151	.046	.261	.141	.043	.240	.132	.040	.221	.122	.038	
4.0	.265	.138	.041	.255	.133	.039	.235	.124	.037	.216	.116	.035	.199	.108	.033	
5.0	.241	.123	.036	.232	.119	.035	.213	.111	.033	.196	.104	.031	.180	.096	.029	
6.0	.221	.111	.032	.212	.107	.031	.196	.100	.029	.180	.094	.027	.165	.087	.026	
7.0	.204	.101	.029	.196	.098	.028	.181	.091	.026	.166	.085	.025	.153	.079	.023	
8.0	.189	.093	.026	.182	.090	.025	.168	.084	.024	.154	.078	.023	.142	.073	.021	
9.0	.176	.085	.024	.170	.083	.023	.156	.077	.022	.144	.072	.021	.132	.067	.019	
10.0	.165	.079	.022	.159	.077	.021	.147	.072	.020	.135	.067	.019	.124	.062	.018	

ρcc	80%			70%			50%			30%			10%			0
ρw	50%	30%	10%	50%	30%	10%	50%	30%	10%	50%	30%	10%	50%	30%	10%	0
ρfc	20%			20%			20%			20%			20%			0
RCR	RCR:Room Cavity Ratio						Ceiling Cavity Exitance Coefficients(CCEC)									
0.0	.369	.369	.369	.316	.316	.316	.215	.215	.215	.124	.124	.124	.040	.040	.040	
1.0	.365	.336	.309	.313	.288	.266	.214	.198	.184	.123	.115	.107	.039	.037	.035	
2.0	.359	.313	.275	.307	.270	.238	.211	.187	.166	.121	.109	.097	.039	.035	.032	
3.0	.352	.297	.253	.301	.256	.220	.207	.178	.154	.120	.104	.091	.038	.034	.030	
4.0	.344	.285	.239	.295	.246	.208	.203	.171	.146	.117	.100	.087	.038	.033	.028	
5.0	.337	.275	.229	.289	.238	.200	.199	.166	.141	.115	.098	.084	.037	.032	.028	
6.0	.329	.267	.222	.283	.231	.194	.195	.162	.137	.113	.095	.081	.037	.031	.027	
7.0	.322	.261	.217	.277	.226	.189	.192	.158	.134	.111	.093	.080	.036	.031	.026	
8.0	.316	.255	.214	.272	.221	.186	.188	.155	.132	.109	.092	.079	.035	.030	.026	
9.0	.310	.250	.210	.267	.217	.184	.185	.153	.130	.108	.090	.078	.035	.030	.026	
10.0	.304	.246	.208	.262	.214	.182	.182	.151	.129	.106	.089	.077	.034	.029	.026	

C Range: 0 - 360DEG
 C Interval: 22.5DEG
 Test Speed: 10.0deg/s
 Temperature:24.8DEG
 Operators:EAST
 Test Date:2020-01-19

γ Range: 0 - 180DEG
 γ Interval: 1.0DEG
 Test System: GO-R5000_V2 SYSTEM V2.0.351
 Humidity:44%
 Test Distance:2.485m [K=1.0000]
 Remarks:

UGR(Unified Glare Rating) Table

Test:U:120.1V I:0.2107A P:23.84W PF:0.9425 Lamp Flux:1759.39x1 lm										
NAME: LED Luminaires					TYPE:			WEIGHT:		
SPEC.:					DIM.:			SERIAL No.:		
MFR.:					SUR.:			Shielding Angle:		
ceiling/cavity	0.7	0.7	0.5	0.5	0.3	0.7	0.7	0.5	0.5	0.3
walls	0.5	0.3	0.5	0.3	0.3	0.5	0.3	0.5	0.3	0.3
working plane	0.2	0.2	0.2	0.2	0.2	0.2	0.2	0.2	0.2	0.2
Room dimensions	Viewed crosswise					Viewed endwise				
x = 2H y = 2H	39.0	40.4	39.6	40.9	41.6	41.3	42.6	41.9	43.2	43.9
3H	40.5	41.7	41.1	42.3	43.0	43.8	45.0	44.4	45.6	46.3
4H	41.1	42.2	41.7	42.8	43.6	45.2	46.3	45.8	46.9	47.7
6H	41.4	42.5	42.0	43.1	43.9	46.6	47.7	47.3	48.3	49.1
8H	41.4	42.5	42.1	43.1	43.9	47.5	48.5	48.1	49.2	49.9
12H	41.4	42.5	42.1	43.1	43.9	48.5	49.5	49.1	50.1	50.9
4H 2H	40.2	41.4	40.9	42.0	42.8	41.9	43.0	42.5	43.6	44.4
3H	42.0	43.0	42.7	43.7	44.4	44.6	45.6	45.3	46.3	47.0
4H	42.7	43.6	43.4	44.3	45.1	46.1	47.0	46.8	47.7	48.5
6H	43.2	44.1	44.0	44.8	45.6	47.8	48.6	48.5	49.3	50.2
8H	43.4	44.2	44.1	44.9	45.8	48.8	49.5	49.5	50.3	51.1
12H	43.5	44.2	44.2	44.9	45.8	49.9	50.6	50.6	51.4	52.2
8H 4H	43.7	44.5	44.4	45.2	46.1	46.4	47.2	47.1	47.9	48.8
6H	44.6	45.3	45.4	46.0	46.9	48.4	49.0	49.2	49.8	50.7
8H	45.0	45.6	45.8	46.3	47.3	49.6	50.2	50.4	50.9	51.9
12H	45.3	45.8	46.1	46.6	47.5	51.0	51.5	51.8	52.3	53.2
12H 4H	44.0	44.7	44.8	45.5	46.4	46.4	47.1	47.2	47.9	48.8
6H	45.2	45.7	45.9	46.5	47.4	48.5	49.1	49.3	49.9	50.8
8H	45.7	46.2	46.5	47.0	48.0	49.8	50.3	50.6	51.1	52.0
Variations with the observer position at spacings:										
S = 1.0H	+ 0.1 / - 0.2					+ 0.1 / - 0.1				
1.5H	+ 0.2 / - 0.3					+ 0.2 / - 0.3				
2.0H	+ 0.3 / - 0.5					+ 0.2 / - 0.4				

CIE Pub.117 Corrected 1759 lm Total Lamp Luminous Flux.(8log(F/F0) = 2.0)

C Range: 0 - 360DEG
 C Interval: 22.5DEG
 Test Speed: 10.0deg/s
 Temperature:24.8DEG
 Operators:EAST
 Test Date:2020-01-19

γ Range: 0 - 180DEG
 γ Interval: 1.0DEG
 Test System: GO-R5000_V2 SYSTEM V2.0.351
 Humidity:44%
 Test Distance:2.485m [K=1.0000]
 Remarks:

UTILIZATION FACTORS TABLE

Test:U:120.1V I:0.2107A P:23.84W PF:0.9425 Lamp Flux:1759.39x1 lm		
NAME: LED Luminaires	TYPE:	WEIGHT:
SPEC.:	DIM.:	SERIAL No.:
MFR.:	SUR.:	Shielding Angle:

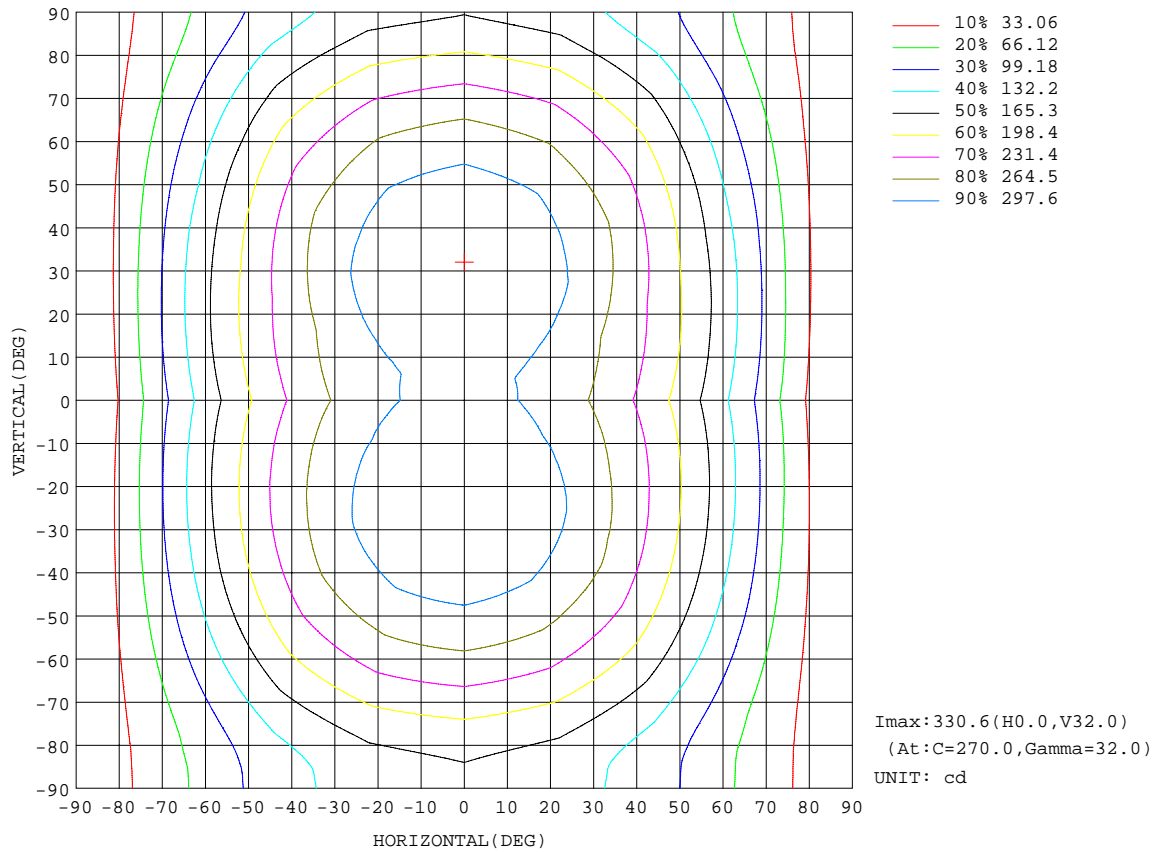
REFLECTANCE										
Ceiling	0.8	0.8	0.8	0.7	0.7	0.7	0.5	0.5	0.5	0
Walls	0.7	0.5	0.3	0.7	0.5	0.3	0.7	0.5	0.3	0
Working plane	0.2	0.2	0.2	0.2	0.2	0.2	0.2	0.2	0.2	0
ROOM INDEX	UTILIZATION FACTORS(PERCENT) $k(RI) \times RCR = 5$									
k = 0.60	45	33	26	44	32	25	42	31	25	18
0.80	55	41	33	53	41	33	50	39	32	24
1.00	62	49	41	60	48	40	56	48	39	29
1.25	69	57	48	67	55	47	62	52	45	35
1.50	75	62	53	72	60	52	66	57	50	38
2.00	82	71	62	79	68	61	72	64	57	45
2.50	87	76	68	83	74	66	76	68	62	48
3.00	91	81	74	87	78	71	79	72	67	52
4.00	95	87	81	91	84	78	83	77	72	56
5.00	98	91	85	94	88	82	85	80	76	59
ROOM INDEX	UF(total)									Direct
According to DIN EN 13032-2 2004			Suspended				SHRNOM = 1.25			

C Range: 0 - 360DEG
 C Interval: 22.5DEG
 Test Speed: 10.0deg/s
 Temperature:24.8DEG
 Operators:EAST
 Test Date:2020-01-19

γ Range: 0 - 180DEG
 γ Interval: 1.0DEG
 Test System: GO-R5000_V2 SYSTEM V2.0.351
 Humidity:44%
 Test Distance:2.485m [K=1.0000]
 Remarks:

ISOCANDELA DIAGRAM

Test:U:120.1V I:0.2107A P:23.84W PF:0.9425 Lamp Flux:1759.39x1 lm		
NAME: LED Luminaires	TYPE:	WEIGHT:
SPEC.:	DIM.:	SERIAL No.:
MFR.:	SUR.:	Shielding Angle:

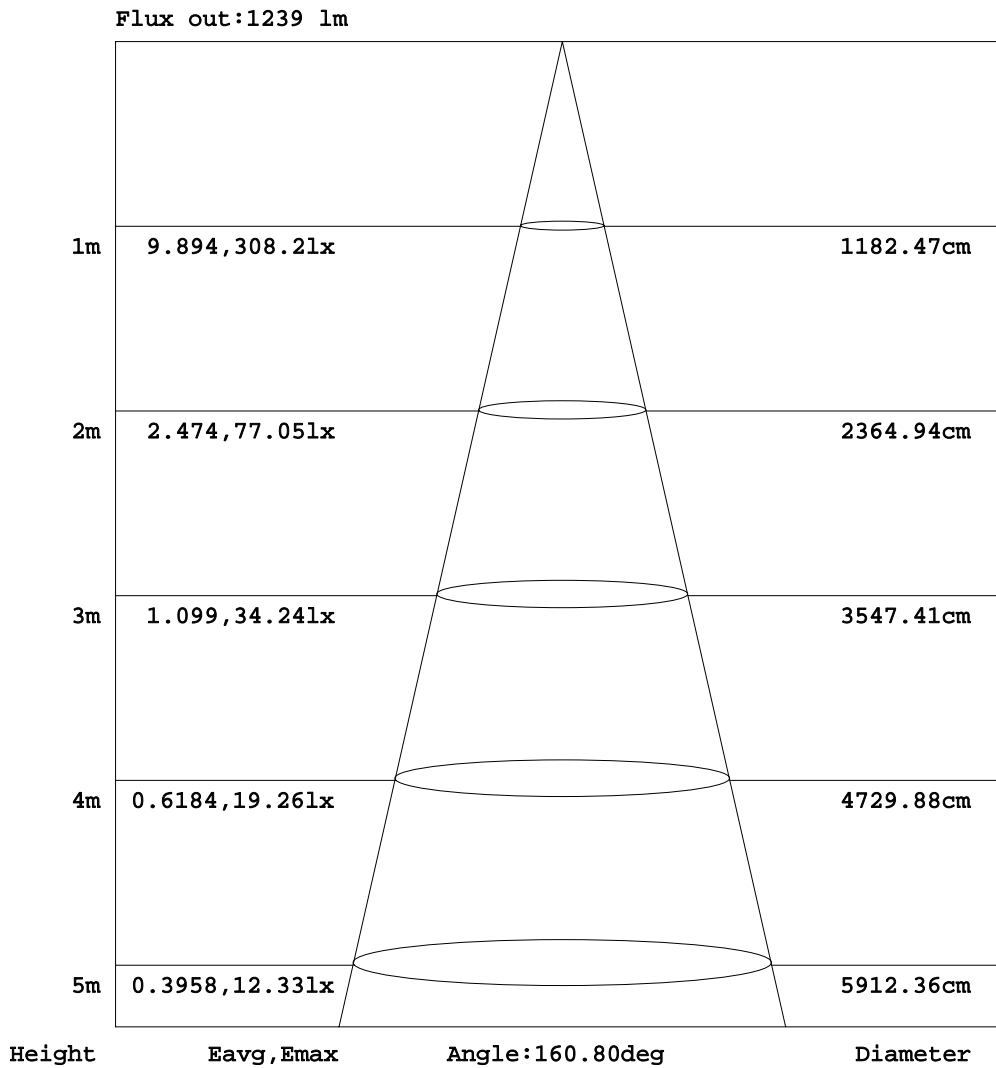


C Range: 0 - 360DEG
 C Interval: 22.5DEG
 Test Speed: 10.0deg/s
 Temperature: 24.8DEG
 Operators: EAST
 Test Date: 2020-01-19

γ Range: 0 - 180DEG
 γ Interval: 1.0DEG
 Test System: GO-R5000_V2 SYSTEM V2.0.351
 Humidity: 44%
 Test Distance: 2.485m [K=1.0000]
 Remarks:

AAI Figure

Test:U:120.1V I:0.2107A P:23.84W PF:0.9425 Lamp Flux:1759.39x1 lm		
NAME: LED Luminaires	TYPE:	WEIGHT:
SPEC.:	DIM.:	SERIAL No.:
MFR.:	SUR.:	Shielding Angle:



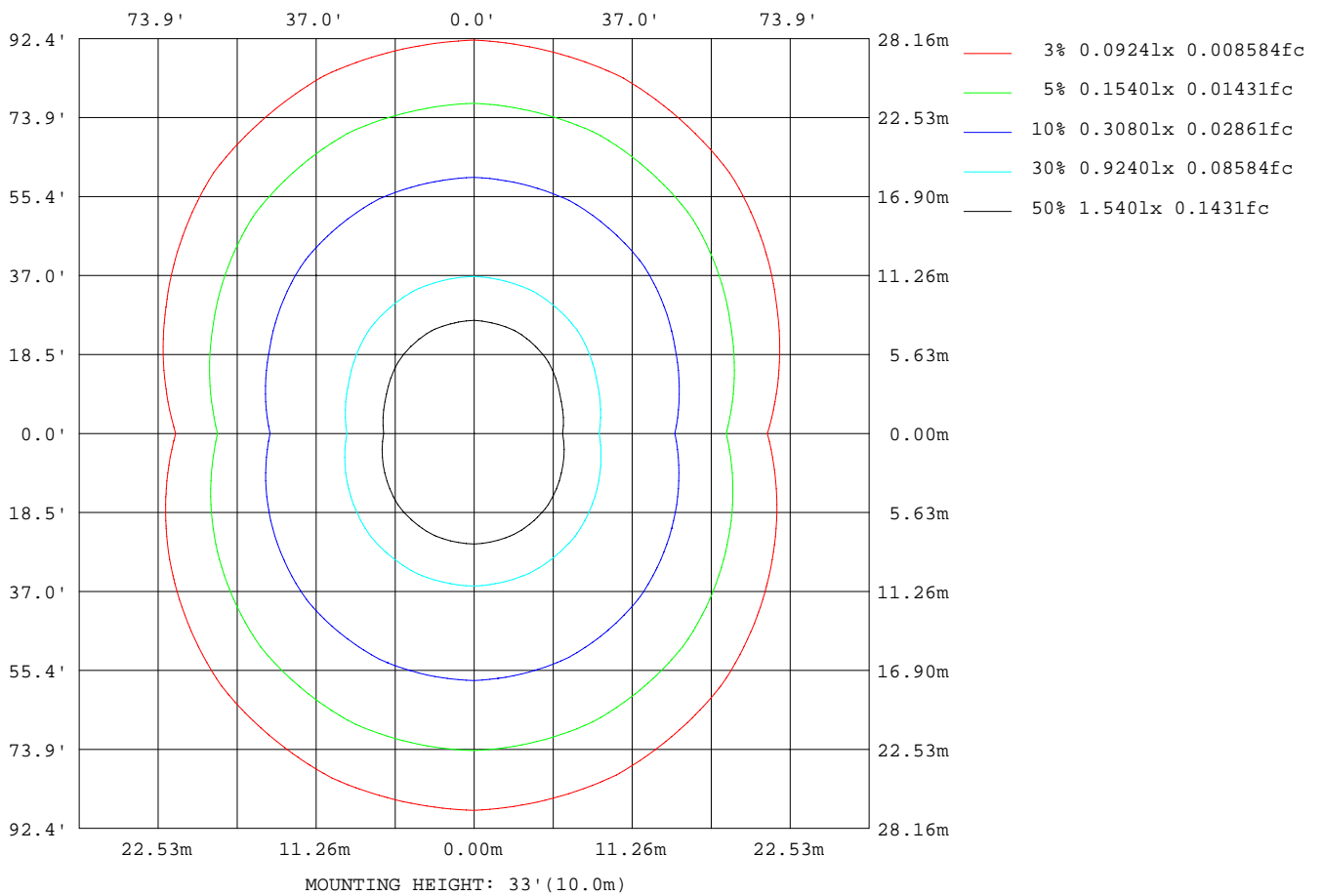
Note:The Curves indicate the illuminated area and the average illumination when the luminaire is at different distance.

C Range: 0 - 360DEG
 C Interval: 22.5DEG
 Test Speed: 10.0deg/s
 Temperature:24.8DEG
 Operators:EAST
 Test Date:2020-01-19

γ Range: 0 - 180DEG
 γ Interval: 1.0DEG
 Test System: GO-R5000_V2 SYSTEM V2.0.351
 Humidity:44%
 Test Distance:2.485m [K=1.0000]
 Remarks:

ISOLUX DIAGRAM

Test:U:120.1V I:0.2107A P:23.84W PF:0.9425 Lamp Flux:1759.39x1 lm		
NAME: LED Luminaires	TYPE:	WEIGHT:
SPEC.:	DIM.:	SERIAL No.:
MFR.:	SUR.:	Shielding Angle:



C Range: 0 - 360DEG
 C Interval: 22.5DEG
 Test Speed: 10.0deg/s
 Temperature:24.8DEG
 Operators:EAST
 Test Date:2020-01-19

γ Range: 0 - 180DEG
 γ Interval: 1.0DEG
 Test System: GO-R5000_V2 SYSTEM V2.0.351
 Humidity:44%
 Test Distance:2.485m [K=1.0000]
 Remarks:

LED Avg.L Report

Test:U:120.1V I:0.2107A P:23.84W PF:0.9425 Lamp Flux:1759.39x1 lm		
NAME: LED Luminaires	TYPE:	WEIGHT:
SPEC.:	DIM.:	SERIAL No.:
MFR.:	SUR.:	Shielding Angle:

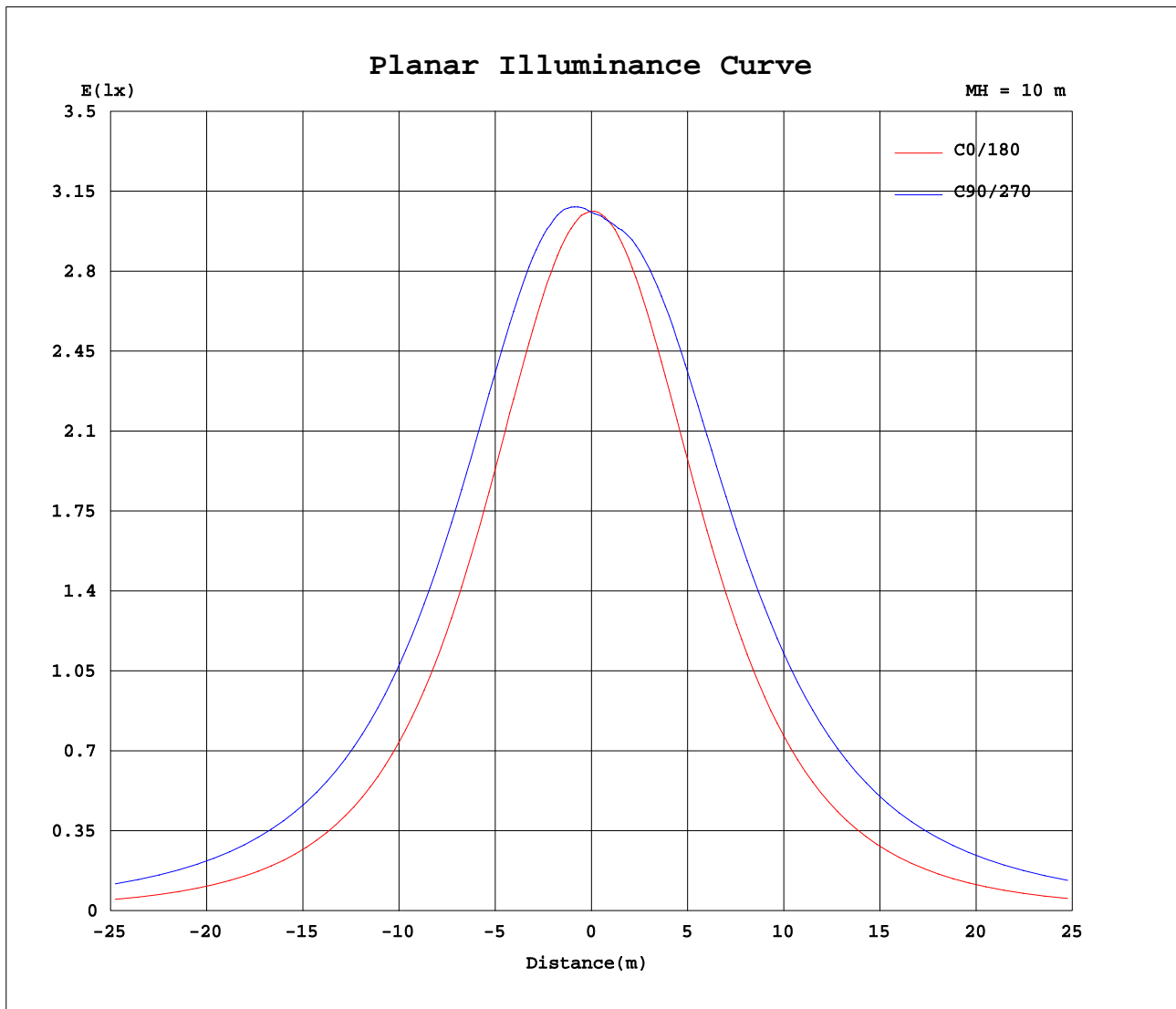
AvgL	cd/m2
L_0~180(65)av	2727844
L_0~180(75)av	2277310
L_0~180(85)av	1108366
L_90~270(65)av	5946697
L_90~270(75)av	8083204
L_90~270(85)av	19748935
L_45(65)av	4990418
L_45(75)av	6355502
L_45(85)av	14069634

Standard: GB/T 29293-2012

C Range: 0 - 360DEG
 C Interval: 22.5DEG
 Test Speed: 10.0deg/s
 Temperature:24.8DEG
 Operators:EAST
 Test Date:2020-01-19

γ Range: 0 - 180DEG
 γ Interval: 1.0DEG
 Test System: GO-R5000_V2 SYSTEM V2.0.351
 Humidity:44%
 Test Distance:2.485m [K=1.0000]
 Remarks:

Planar Illuminance Curve



C Range: 0 - 360DEG
 C Interval: 22.5DEG
 Test Speed: 10.0deg/s
 Temperature: 24.8DEG
 Operators: EAST
 Test Date: 2020-01-19

γ Range: 0 - 180DEG
 γ Interval: 1.0DEG
 Test System: GO-R5000_V2 SYSTEM V2.0.351
 Humidity: 44%
 Test Distance: 2.485m [K=1.0000]
 Remarks:

LUMINOUS DISTRIBUTION INTENSITY DATA

Test:U:120.1V I:0.2107A P:23.84W PF:0.9425 Lamp Flux:1759.39x1 lm		
NAME: LED Luminaires	TYPE:	WEIGHT:
SPEC.:	DIM.:	SERIAL No.:
MFR.:	SUR.:	Shielding Angle:

Table--1

UNIT: cd

C (DEG) \ γ (DEG)	0	22.5	45	67.5	90	112.5	135	157.5	180	202.5	225	247.5	270	292.5	315	337.5			
0	306	306	306	306	306	306	306	306	306	306	306	306	306	306	306	306			
5	304	307	308	311	312	311	310	307	305	305	305	305	306	305	304	303			
10	300	305	312	317	319	318	313	307	302	302	306	309	311	309	304	300			
15	294	302	313	321	325	323	316	305	297	299	307	315	318	314	305	295			
20	285	297	313	324	329	326	316	302	289	294	309	321	324	319	306	290			
25	274	290	309	324	330	326	314	295	279	288	309	324	329	322	305	282			
30	261	281	305	321	327	324	310	287	267	280	307	325	330	323	302	274			
35	245	270	297	315	322	319	303	277	252	271	303	323	330	320	298	263			
40	228	256	287	307	314	310	293	264	235	259	296	319	325	316	290	251			
45	209	240	273	295	304	299	281	249	216	245	286	312	319	308	280	237			
50	187	222	259	282	291	286	266	231	195	230	275	302	309	298	268	221			
55	164	201	240	266	275	270	248	211	172	212	260	289	297	285	253	203			
60	138	179	220	247	257	252	228	188	147	191	243	274	282	269	235	182			
65	112	154	198	226	237	231	206	164	119	169	223	256	265	251	216	160			
70	83.8	128	175	204	216	209	182	137	90.9	145	202	236	246	232	194	135			
75	55.9	101	150	182	194	186	158	110	62.0	118	178	214	224	210	171	110			
80	28.6	76.6	129	162	175	166	135	84.2	34.4	92.5	154	191	202	187	148	85.3			
85	7.66	58.9	115	151	164	153	120	63.7	11.7	69.2	131	169	181	166	125	63.8			
90	0.28	53.6	112	149	162	151	115	56.6	0.30	55.0	115	153	164	150	111	52.6			
95	0.26	51.9	110	146	159	148	113	55.0	0.21	53.7	111	146	157	144	108	52.3			
100	0.31	48.2	107	143	156	145	110	51.7	0.26	52.8	109	144	155	142	107	51.1			
105	0.35	42.6	101	137	150	139	105	46.6	0.29	50.3	106	141	151	139	104	48.4			
110	0.41	36.1	94.0	130	142	132	97.6	40.3	0.36	46.2	102	135	146	133	99.3	44.2			
115	0.51	30.2	85.1	120	133	122	88.8	33.9	0.44	41.3	95.6	128	139	126	93.1	39.4			
120	0.63	25.9	75.1	109	122	111	78.9	29.3	0.51	36.6	87.8	120	129	118	85.6	35.2			
125	0.78	21.5	64.5	97.2	109	99.3	68.2	24.7	0.63	33.4	79.1	110	119	108	77.0	32.1			
130	0.88	17.4	53.8	84.3	95.5	86.1	57.0	19.9	0.68	29.6	69.4	98.2	108	97.2	67.9	28.8			
135	1.06	13.6	45.8	70.8	81.2	72.6	48.6	15.5	0.79	25.4	59.5	86.0	95.1	85.6	58.7	25.4			
140	1.23	10.8	37.6	58.7	66.9	60.1	40.0	11.5	0.95	20.3	51.1	72.9	81.7	73.5	52.1	22.4			
145	1.44	8.31	29.3	47.8	54.8	48.9	31.2	8.85	1.08	14.3	41.8	60.5	67.9	62.7	46.1	20.2			
150	1.56	6.33	21.9	36.8	42.8	37.6	23.0	6.76	1.15	9.27	30.9	49.0	56.8	53.7	40.3	18.6			
155	1.55	4.53	15.3	26.1	30.6	26.6	15.8	4.84	1.14	5.92	19.7	36.6	44.9	43.9	33.9	17.1			
160	1.58	2.99	10.1	16.9	20.0	17.2	10.2	2.95	1.14	2.79	10.9	23.5	32.2	33.0	26.6	14.9			
165	1.52	1.77	5.83	9.79	11.4	9.95	5.35	1.82	1.16	1.69	6.08	12.6	19.5	21.5	18.0	11.4			
170	1.43	0.95	2.49	4.40	5.32	4.40	2.21	1.02	1.10	1.20	3.21	6.23	10.9	12.2	10.8	7.32			
175	1.61	0.96	0.95	1.19	1.45	1.03	0.93	0.90	1.45	1.47	2.48	3.54	3.24	5.88	5.02	3.51			
180	1.78	1.71	1.50	1.34	0.62	1.26	1.44	1.54	1.74	1.74	1.70	1.61	1.40	0.93	1.41	1.49			

C Range: 0 - 360DEG
 C Interval: 22.5DEG
 Test Speed: 10.0deg/s
 Temperature:24.8DEG
 Operators:EAST
 Test Date:2020-01-19

γ Range: 0 - 180DEG
 γ Interval: 1.0DEG
 Test System: GO-R5000_V2 SYSTEM V2.0.351
 Humidity:44%
 Test Distance:2.485m [K=1.0000]
 Remarks: