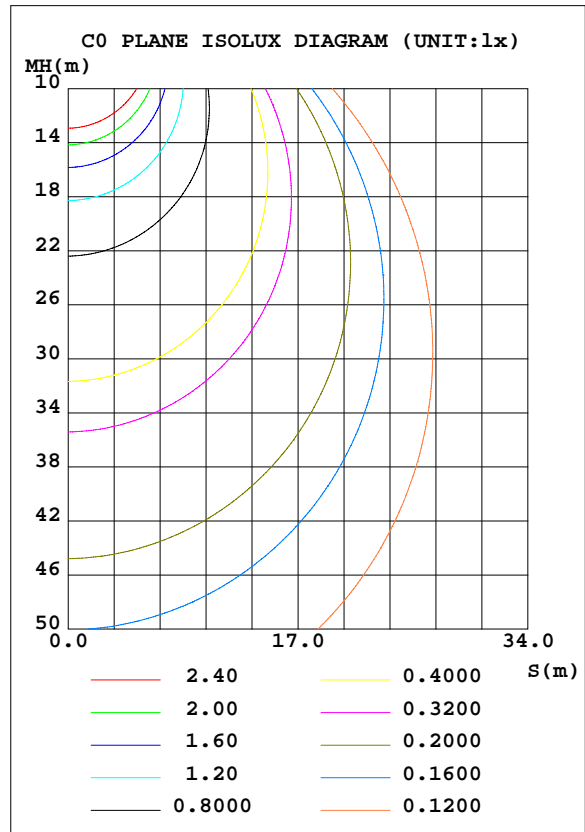
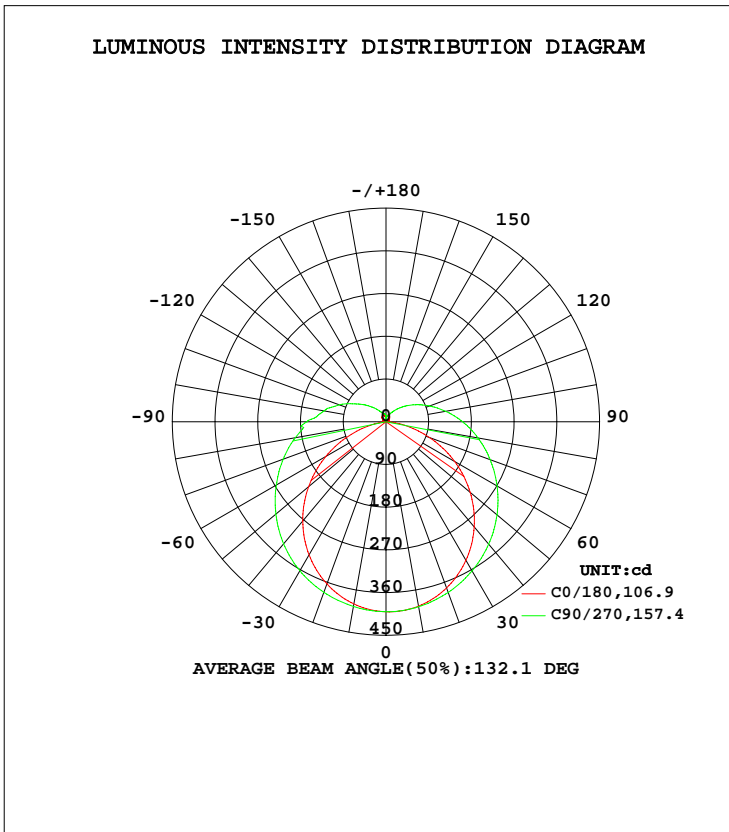


LUMINAIRE PHOTOMETRIC TEST REPORT

Test:U:120.0V I:0.1935A P:22.75W PF:0.9794 Lamp Flux:1703.36x1 lm		
NAME:4906BN-24	TYPE:N/A	WEIGHT:N/A
SPEC.:N/A	DIM.: N/A	SERIAL No.:N/A
MFR.:	SUR.:N/A	Shielding Angle:N/A

DATA OF LAMP		PHOTOMETRIC DATA			
MODEL	4906BN-24	Imax(cd)	400.7	S/MH(C0/180)	1.25
NOMINAL POWER(W)	24	LOR(%)	100.0	S/MH(C90/270)	1.36
RATED VOLTAGE(V)	120	TOTAL FLUX(lm)	1703.4	η UP, DN(C0-180)	8.4,41.5
NOMINAL FLUX(lm)	1703.36	CIE CLASS	SEMI-D.	η UP, DN(C180-360)	7.9,42.2
LAMPS INSIDE	1	η up(%)	16.3	CIBSE SHR NOM	1.50
TEST VOLTAGE(V)	120	η down(%)	83.7	CIBSE SHR MAX	1.50



C Range: 0 - 360DEG
 C Interval: 22.5DEG
 Test Speed: HIGH
 Temperature:25.2DEG
 Operators:ben

γ Range: 0 - 180DEG
 γ Interval: 1.0DEG
 Test System:EVERFINE GO-R5000_V2 SYSTEM V2.0.351
 Humidity:45%
 Test Distance:2.447m [K=1.0000]
 Remarks:

ZONAL FLUX DIAGRAM

ZONAL FLUX DIAGRAM:

γ	C0	C45	C90	C135	C180	C225	C270	C315	γ	Φ zone	Φ total	%lum,lamp
10	389.8	392.1	395.1	394.9	394.5	395.7	395.8	392.8	0- 10	37.90	37.90	2.23,2.23
20	363.6	372.2	382.4	377.3	372.7	378.7	382.8	372.6	10- 20	109.0	146.9	8.62,8.62
30	324.1	342.6	362.6	349.6	337.0	351.6	362.8	342.4	20- 30	167.0	313.9	18.4,18.4
40	272.9	305.2	335.7	313.4	289.2	316.3	336.6	304.9	30- 40	205.9	519.8	30.5,30.5
50	212.8	262.2	302.8	270.8	231.6	275.1	305.5	262.1	40- 50	222.3	742.1	43.6,43.6
60	146.5	216.8	267.0	224.8	166.9	230.7	270.4	216.9	50- 60	216.5	958.5	56.3,56.3
70	78.12	173.1	230.3	179.7	97.88	186.3	233.6	172.8	60- 70	192.0	1151	67.5,67.5
80	19.52	134.7	194.0	139.5	34.92	145.3	197.1	132.9	70- 80	156.0	1307	76.7,76.7
90	0.2910	107.5	166.1	108.5	0.3722	108.8	161.6	98.70	80- 90	119.3	1426	83.7,83.7
100	1.623	79.89	132.7	82.29	0.7576	79.40	127.8	71.60	90-100	89.66	1515	89,89
110	4.380	57.33	104.7	57.40	3.258	56.66	97.78	51.31	100-110	65.89	1581	92.8,92.8
120	7.466	40.82	75.55	40.59	6.440	40.00	72.07	36.63	110-120	45.82	1627	95.5,95.5
130	10.40	29.90	54.28	29.49	9.535	27.76	50.91	25.87	120-130	30.70	1658	97.3,97.3
140	13.09	22.75	37.48	22.39	12.32	19.05	33.86	19.06	130-140	19.86	1678	98.5,98.5
150	15.35	18.89	25.75	18.56	14.63	13.36	21.52	15.44	140-150	12.45	1690	99.2,99.2
160	16.21	17.27	19.28	17.06	16.23	12.85	14.20	13.36	150-160	7.677	1698	99.7,99.7
170	12.08	16.69	17.01	14.43	12.39	12.01	13.73	14.52	160-170	4.272	1702	99.9,99.9
180	12.55	11.73	0.8035	10.68	12.40	12.03	8.294	7.708	170-180	1.240	1703	100,100
DEG	LUMINOUS INTENSITY:cd Less than 25% Percent = 16.7 %									UNIT:lm		

Conical surface Flux(90deg): 630.31 lm

%lum = 37.0%
 %lamp = 37.0%

Conical surface Flux(120deg): 958.55 lm

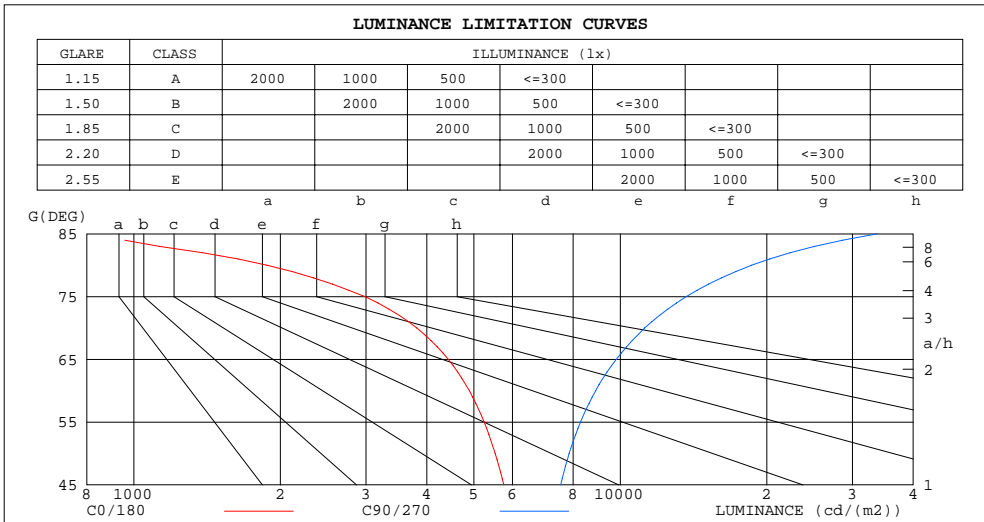
%lum = 56.3%
 %lamp = 56.3%

C Range: 0 - 360DEG
 C Interval: 22.5DEG
 Test Speed: HIGH
 Temperature:25.2DEG
 Operators:ben

γ Range: 0 - 180DEG
 γ Interval: 1.0DEG
 Test System:EVERFINE GO-R5000_V2 SYSTEM V2.0.351
 Humidity:45%
 Test Distance:2.447m [K=1.0000]
 Remarks:

LUMINANCE LIMITATION CURVES

Test:U:120.0V I:0.1935A P:22.75W PF:0.9794 Lamp Flux:1703.36x1 lm		
NAME:4906BN-24	TYPE:N/A	WEIGHT:N/A
SPEC.:N/A	DIM.: N/A	SERIAL No.:N/A
MFR.:	SUR.:N/A	Shielding Angle:N/A



LUMINANCE cd/(m2)		
G(DEG)	C0/180	C90/270
85	722	33715
80	1877	18619
75	2985	13668
70	3814	11224
65	4429	9813
60	4894	8899
55	5247	8281
50	5530	7850
45	5761	7536

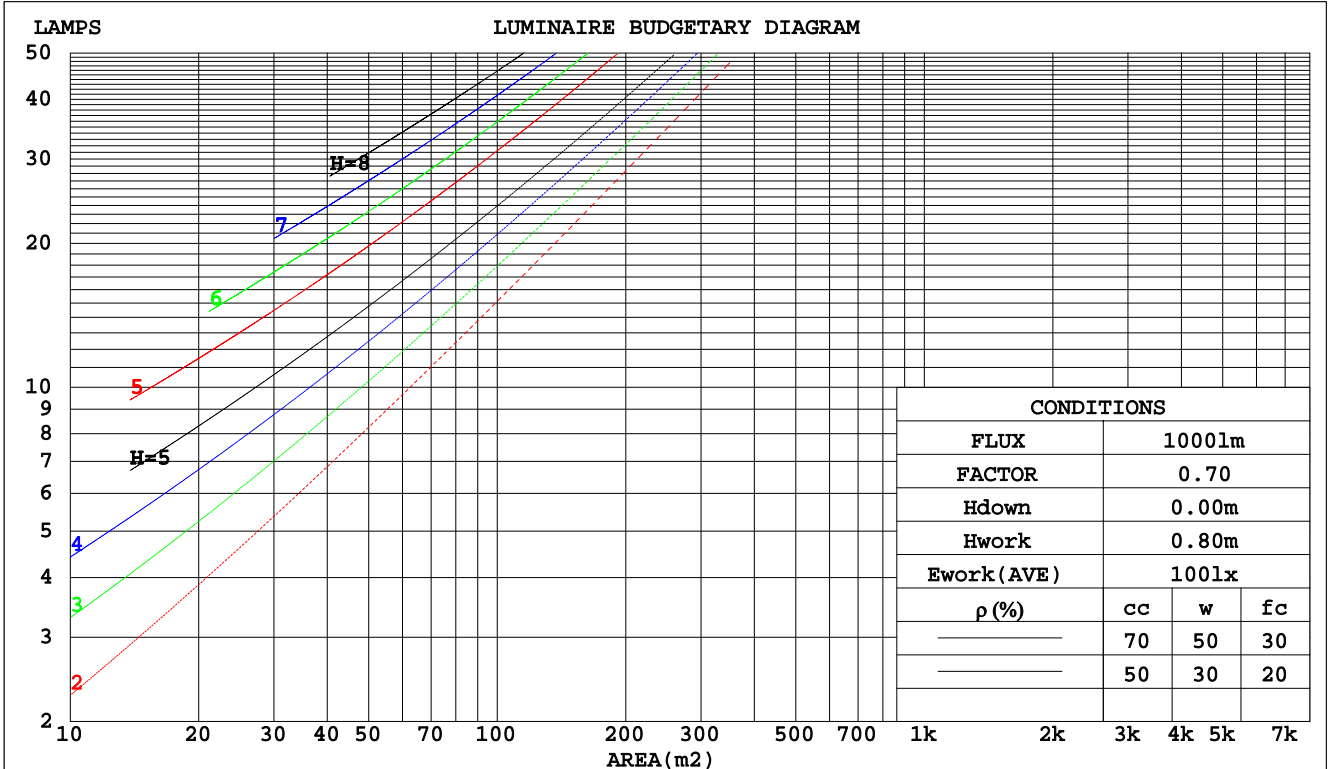
C Range: 0 - 360DEG
 C Interval: 22.5DEG
 Test Speed: HIGH
 Temperature:25.2DEG
 Operators:ben

γ Range: 0 - 180DEG
 γ Interval: 1.0DEG
 Test System:EVERFINE GO-R5000_V2 SYSTEM V2.0.351
 Humidity:45%
 Test Distance:2.447m [K=1.0000]
 Remarks:

CU AND LUMINAIRE BUDGETARY ESTIMATE DIAGRAM

Test:U:120.0V I:0.1935A P:22.75W PF:0.9794 Lamp Flux:1703.36x1 lm		
NAME:4906BN-24	TYPE:N/A	WEIGHT:N/A
SPEC.:N/A	DIM.: N/A	SERIAL No.:N/A
MFR.:	SUR.:N/A	Shielding Angle:N/A

pcc	80%			70%			50%			30%			10%			0
	50%	30%	10%	50%	30%	10%	50%	30%	10%	50%	30%	10%	50%	30%	10%	0
pw																
pfc	20%			20%			20%			20%			20%			0
RCR	RCR:Room Cavity Ratio															
	Coefficients of Utilization(CU)															
0.0	1.15	1.15	1.15	1.11	1.11	1.11	1.02	1.02	1.02	.94	.94	.94	.87	.87	.87	.84
1.0	.96	.91	.86	.93	.88	.83	.85	.81	.78	.78	.75	.73	.72	.70	.68	.64
2.0	.83	.75	.68	.79	.72	.66	.73	.67	.62	.67	.63	.58	.62	.58	.55	.52
3.0	.72	.63	.56	.69	.61	.54	.64	.57	.51	.59	.53	.48	.54	.49	.45	.42
4.0	.63	.54	.47	.61	.52	.45	.56	.49	.43	.52	.46	.41	.48	.43	.38	.36
5.0	.56	.47	.40	.54	.45	.39	.50	.43	.37	.46	.40	.35	.43	.37	.33	.30
6.0	.50	.41	.34	.48	.40	.34	.45	.37	.32	.42	.35	.30	.39	.33	.29	.26
7.0	.45	.36	.30	.44	.35	.29	.41	.33	.28	.38	.31	.27	.35	.30	.25	.23
8.0	.41	.33	.27	.40	.32	.26	.37	.30	.25	.35	.28	.24	.32	.27	.23	.21
9.0	.38	.29	.24	.37	.29	.23	.34	.27	.22	.32	.26	.21	.30	.24	.20	.18
10.0	.35	.27	.21	.34	.26	.21	.32	.25	.20	.30	.24	.19	.28	.22	.18	.17



C Range: 0 - 360DEG
 C Interval: 22.5DEG
 Test Speed: HIGH
 Temperature:25.2DEG
 Operators:ben

γ Range: 0 - 180DEG
 γ Interval: 1.0DEG
 Test System:EVERFINE GO-R5000_V2 SYSTEM V2.0.351
 Humidity:45%
 Test Distance:2.447m [K=1.0000]
 Remarks:

WEC AND CCEC

Test:U:120.0V I:0.1935A P:22.75W PF:0.9794 Lamp Flux:1703.36x1 lm		
NAME:4906BN-24	TYPE:N/A	WEIGHT:N/A
SPEC.:N/A	DIM.: N/A	SERIAL No.:N/A
MFR.:	SUR.:N/A	Shielding Angle:N/A

ρcc	80%			70%			50%			30%			10%			0
ρw	50%	30%	10%	50%	30%	10%	50%	30%	10%	50%	30%	10%	50%	30%	10%	0
ρfc	20%			20%			20%			20%			20%			0
RCR	RCR:Room Cavity Ratio						Wall Exitance Coefficients(WEC)									
0.0																
1.0	.377	.215	.068	.365	.208	.066	.342	.196	.063	.321	.185	.059	.302	.175	.056	
2.0	.329	.180	.055	.318	.175	.054	.297	.165	.051	.278	.156	.049	.260	.147	.046	
3.0	.293	.156	.047	.283	.152	.046	.264	.143	.044	.247	.135	.042	.231	.128	.040	
4.0	.264	.137	.040	.255	.134	.039	.238	.126	.038	.223	.120	.036	.208	.113	.034	
5.0	.241	.123	.036	.232	.119	.035	.217	.113	.033	.203	.107	.032	.190	.101	.030	
6.0	.221	.111	.032	.213	.108	.031	.199	.102	.030	.186	.097	.028	.174	.092	.027	
7.0	.204	.101	.029	.197	.098	.028	.184	.093	.027	.172	.088	.026	.161	.084	.025	
8.0	.189	.092	.026	.183	.090	.025	.171	.086	.024	.160	.081	.023	.150	.077	.022	
9.0	.176	.085	.024	.171	.083	.023	.160	.079	.022	.150	.075	.022	.140	.071	.021	
10.0	.165	.079	.022	.160	.077	.022	.150	.074	.021	.141	.070	.020	.132	.066	.019	

ρcc	80%			70%			50%			30%			10%			0
ρw	50%	30%	10%	50%	30%	10%	50%	30%	10%	50%	30%	10%	50%	30%	10%	0
ρfc	20%			20%			20%			20%			20%			0
RCR	RCR:Room Cavity Ratio						Ceiling Cavity Exitance Coefficients(CCEC)									
0.0	.315	.315	.315	.269	.269	.269	.184	.184	.184	.105	.105	.105	.034	.034	.034	
1.0	.310	.281	.254	.265	.241	.219	.182	.166	.151	.104	.096	.088	.033	.031	.028	
2.0	.303	.258	.220	.260	.222	.190	.178	.154	.132	.103	.089	.078	.033	.029	.025	
3.0	.296	.241	.198	.253	.208	.171	.174	.145	.120	.100	.084	.071	.032	.027	.023	
4.0	.288	.229	.183	.247	.198	.159	.170	.138	.112	.098	.081	.066	.032	.026	.022	
5.0	.280	.219	.173	.241	.189	.151	.166	.132	.106	.096	.078	.063	.031	.025	.021	
6.0	.273	.211	.166	.234	.182	.145	.162	.128	.102	.094	.075	.061	.030	.025	.020	
7.0	.266	.204	.161	.229	.177	.140	.158	.124	.099	.092	.073	.059	.030	.024	.020	
8.0	.259	.198	.157	.223	.172	.137	.154	.121	.097	.090	.071	.058	.029	.023	.019	
9.0	.253	.194	.154	.218	.168	.134	.151	.118	.095	.088	.070	.057	.028	.023	.019	
10.0	.247	.190	.151	.213	.165	.132	.148	.116	.094	.086	.068	.056	.028	.022	.019	

C Range: 0 - 360DEG
 C Interval: 22.5DEG
 Test Speed: HIGH
 Temperature:25.2DEG
 Operators:ben

γ Range: 0 - 180DEG
 γ Interval: 1.0DEG
 Test System:EVERFINE GO-R5000_V2 SYSTEM V2.0.351
 Humidity:45%
 Test Distance:2.447m [K=1.0000]
 Remarks:

UGR(Unified Glare Rating) Table

Test:U:120.0V I:0.1935A P:22.75W PF:0.9794 Lamp Flux:1703.36x1 lm										
NAME:4906BN-24					TYPE:N/A			WEIGHT:N/A		
SPEC.:N/A					DIM.: N/A			SERIAL No.:N/A		
MFR.:					SUR.:N/A			Shielding Angle:N/A		
ceiling/cavity	0.7	0.7	0.5	0.5	0.3	0.7	0.7	0.5	0.5	0.3
walls	0.5	0.3	0.5	0.3	0.3	0.5	0.3	0.5	0.3	0.3
working plane	0.2	0.2	0.2	0.2	0.2	0.2	0.2	0.2	0.2	0.2
Room dimensions	Viewed crosswise					Viewed endwise				
x = 2H y = 2H	17.2	18.6	17.7	19.1	19.6	19.5	20.9	20.0	21.4	21.9
3H	18.5	19.7	19.0	20.3	20.8	22.1	23.4	22.7	23.9	24.5
4H	18.9	20.1	19.4	20.6	21.2	23.6	24.8	24.1	25.3	25.9
6H	19.1	20.3	19.7	20.8	21.4	25.2	26.3	25.7	26.9	27.5
8H	19.1	20.2	19.7	20.8	21.4	26.0	27.2	26.6	27.7	28.3
12H	19.1	20.2	19.7	20.8	21.4	27.1	28.1	27.6	28.7	29.3
4H 2H	18.3	19.6	18.9	20.1	20.7	20.0	21.3	20.6	21.8	22.4
3H	19.9	21.0	20.5	21.6	22.2	22.9	24.0	23.5	24.5	25.2
4H	20.6	21.5	21.2	22.1	22.8	24.6	25.5	25.2	26.1	26.8
6H	21.0	21.9	21.6	22.5	23.2	26.4	27.2	27.0	27.9	28.6
8H	21.1	21.9	21.8	22.6	23.3	27.4	28.2	28.0	28.8	29.6
12H	21.2	21.9	21.8	22.6	23.3	28.5	29.3	29.2	29.9	30.7
8H 4H	21.7	22.5	22.4	23.2	23.9	24.9	25.7	25.5	26.3	27.0
6H	22.6	23.3	23.2	23.9	24.7	27.0	27.7	27.7	28.3	29.1
8H	22.9	23.5	23.6	24.2	25.0	28.2	28.8	28.9	29.5	30.3
12H	23.2	23.7	23.9	24.4	25.2	29.6	30.2	30.3	30.9	31.7
12H 4H	22.1	22.8	22.7	23.5	24.2	24.9	25.6	25.5	26.3	27.0
6H	23.2	23.8	23.9	24.5	25.3	27.1	27.7	27.8	28.4	29.2
8H	23.8	24.3	24.5	25.0	25.8	28.4	29.0	29.1	29.7	30.5
Variations with the observer position at spacings:										
S = 1.0H	+ 0.1 / - 0.1					+ 0.1 / - 0.1				
1.5H	+ 0.2 / - 0.3					+ 0.2 / - 0.3				
2.0H	+ 0.2 / - 0.4					+ 0.2 / - 0.3				

CIE Pub.117 Corrected 1703 lm Total Lamp Luminous Flux.(8log(F/F0) = 1.9)

C Range: 0 - 360DEG
 C Interval: 22.5DEG
 Test Speed: HIGH
 Temperature:25.2DEG
 Operators:ben

γ Range: 0 - 180DEG
 γ Interval: 1.0DEG
 Test System:EVERFINE GO-R5000_V2 SYSTEM V2.0.351
 Humidity:45%
 Test Distance:2.447m [K=1.0000]
 Remarks:

UTILIZATION FACTORS TABLE

Test:U:120.0V I:0.1935A P:22.75W PF:0.9794 Lamp Flux:1703.36x1 lm		
NAME:4906BN-24	TYPE:N/A	WEIGHT:N/A
SPEC.:N/A	DIM.: N/A	SERIAL No.:N/A
MFR.:	SUR.:N/A	Shielding Angle:N/A

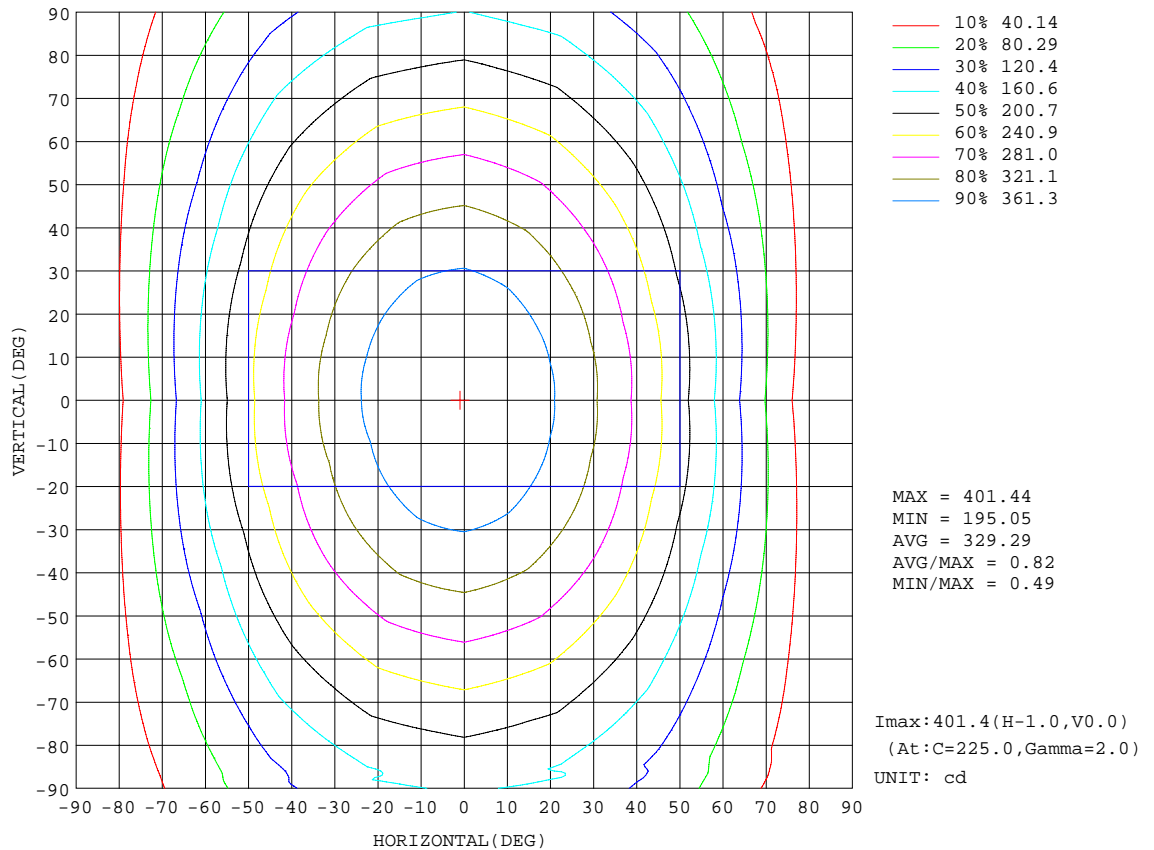
REFLECTANCE										
Ceiling	0.8	0.8	0.8	0.7	0.7	0.7	0.5	0.5	0.5	0
Walls	0.7	0.5	0.3	0.7	0.5	0.3	0.7	0.5	0.3	0
Working plane	0.2	0.2	0.2	0.2	0.2	0.2	0.2	0.2	0.2	0
ROOM INDEX	UTILIZATION FACTORS(PERCENT) $k(RI) \times RCR = 5$									
k = 0.60	49	37	29	48	36	29	46	35	29	22
0.80	58	45	37	57	45	37	54	43	36	28
1.00	66	53	45	64	52	44	61	53	43	35
1.25	73	60	52	71	59	51	66	57	50	40
1.50	78	66	57	75	64	56	71	61	55	44
2.00	85	74	66	82	72	65	77	68	62	51
2.50	89	80	72	86	77	70	80	73	67	55
3.00	93	84	77	90	82	75	83	77	71	58
4.00	98	90	84	94	87	81	87	82	77	63
5.00	101	94	88	97	91	86	90	85	81	66
ROOM INDEX	UF(total)									Direct
According to DIN EN 13032-2 2004			Suspended				SHRNOM = 1.25			

C Range: 0 - 360DEG
 C Interval: 22.5DEG
 Test Speed: HIGH
 Temperature:25.2DEG
 Operators:ben

γ Range: 0 - 180DEG
 γ Interval: 1.0DEG
 Test System:EVERFINE GO-R5000_V2 SYSTEM V2.0.351
 Humidity:45%
 Test Distance:2.447m [K=1.0000]
 Remarks:

ISOCANDELA DIAGRAM

Test:U:120.0V I:0.1935A P:22.75W PF:0.9794 Lamp Flux:1703.36x1 lm		
NAME:4906BN-24	TYPE:N/A	WEIGHT:N/A
SPEC.:N/A	DIM.: N/A	SERIAL No.:N/A
MFR.:	SUR.:N/A	Shielding Angle:N/A

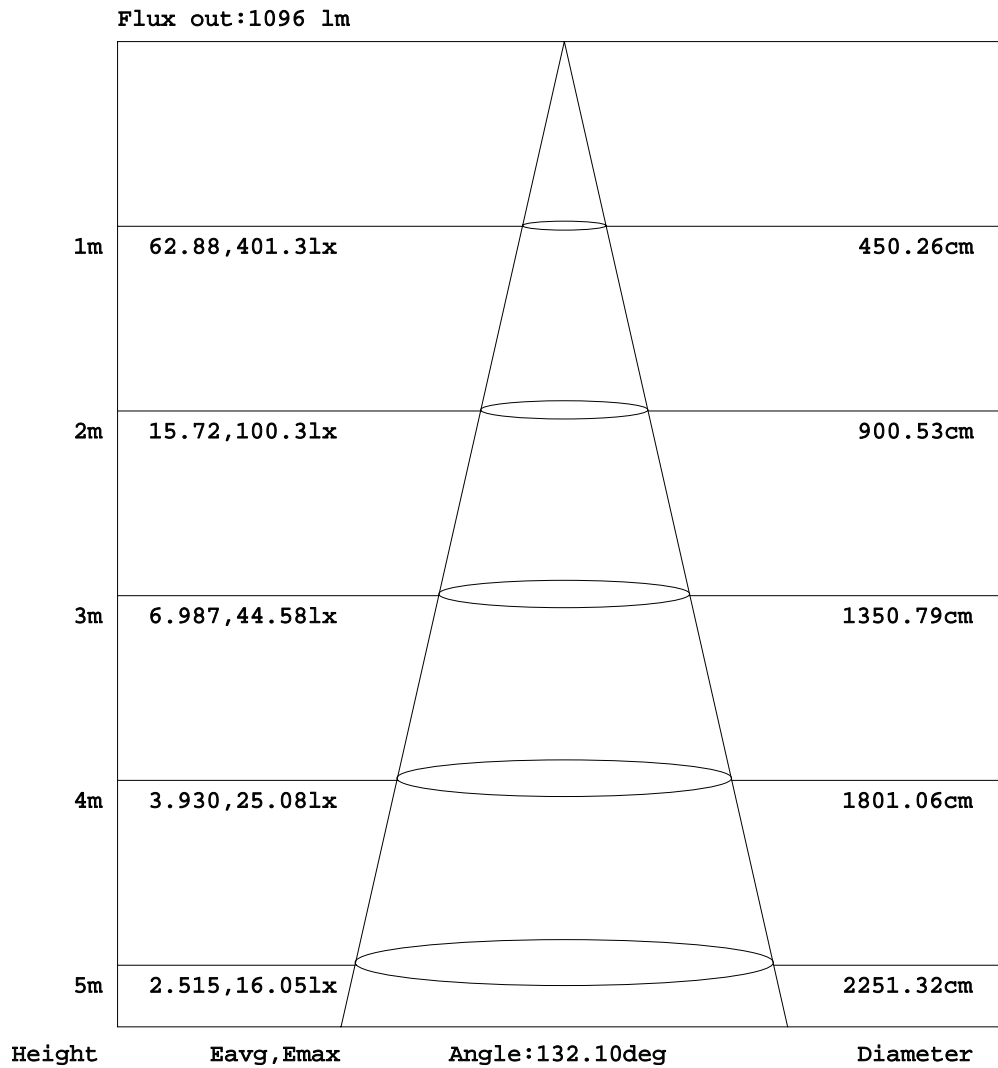


C Range: 0 - 360DEG
 C Interval: 22.5DEG
 Test Speed: HIGH
 Temperature:25.2DEG
 Operators:ben

γ Range: 0 - 180DEG
 γ Interval: 1.0DEG
 Test System:EVERFINE GO-R5000_V2 SYSTEM V2.0.351
 Humidity:45%
 Test Distance:2.447m [K=1.0000]
 Remarks:

AAI Figure

Test:U:120.0V I:0.1935A P:22.75W PF:0.9794 Lamp Flux:1703.36x1 lm		
NAME:4906BN-24	TYPE:N/A	WEIGHT:N/A
SPEC.:N/A	DIM.: N/A	SERIAL No.:N/A
MFR.:	SUR.:N/A	Shielding Angle:N/A



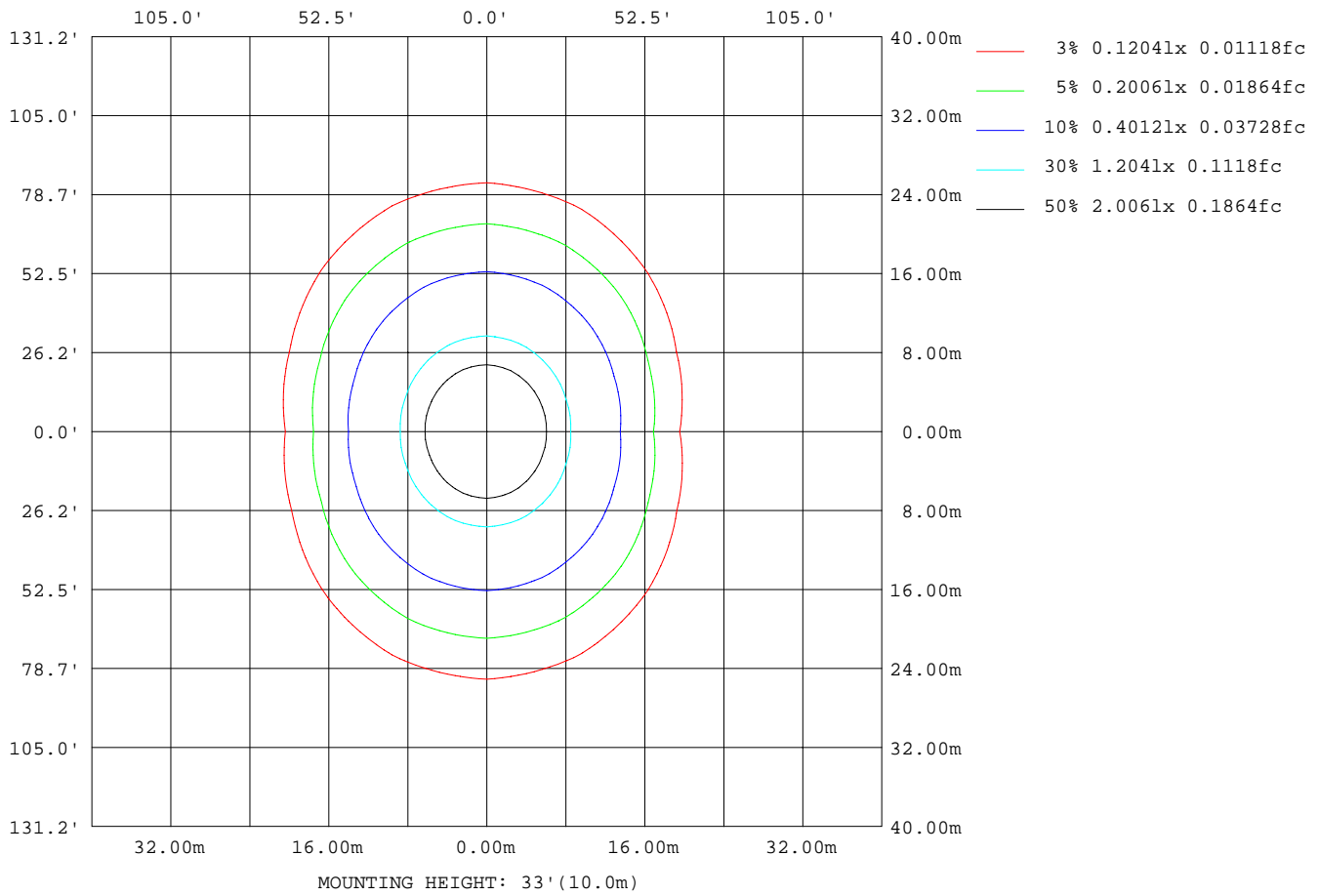
Note:The Curves indicate the illuminated area and the average illumination when the luminaire is at different distance.

C Range: 0 - 360DEG
 C Interval: 22.5DEG
 Test Speed: HIGH
 Temperature:25.2DEG
 Operators:ben

γ Range: 0 - 180DEG
 γ Interval: 1.0DEG
 Test System:EVERFINE GO-R5000_V2 SYSTEM V2.0.351
 Humidity:45%
 Test Distance:2.447m [K=1.0000]
 Remarks:

ISOLUX DIAGRAM

Test:U:120.0V I:0.1935A P:22.75W PF:0.9794 Lamp Flux:1703.36x1 lm		
NAME:4906BN-24	TYPE:N/A	WEIGHT:N/A
SPEC.:N/A	DIM.: N/A	SERIAL No.:N/A
MFR.:	SUR.:N/A	Shielding Angle:N/A



C Range: 0 - 360DEG
 C Interval: 22.5DEG
 Test Speed: HIGH
 Temperature:25.2DEG
 Operators:ben

γ Range: 0 - 180DEG
 γ Interval: 1.0DEG
 Test System:EVERFINE GO-R5000_V2 SYSTEM V2.0.351
 Humidity:45%
 Test Distance:2.447m [K=1.0000]
 Remarks:

LED Avg.L Report

Test:U:120.0V I:0.1935A P:22.75W PF:0.9794 Lamp Flux:1703.36x1 lm		
NAME:4906BN-24	TYPE:N/A	WEIGHT:N/A
SPEC.:N/A	DIM.: N/A	SERIAL No.:N/A
MFR.:	SUR.:N/A	Shielding Angle:N/A

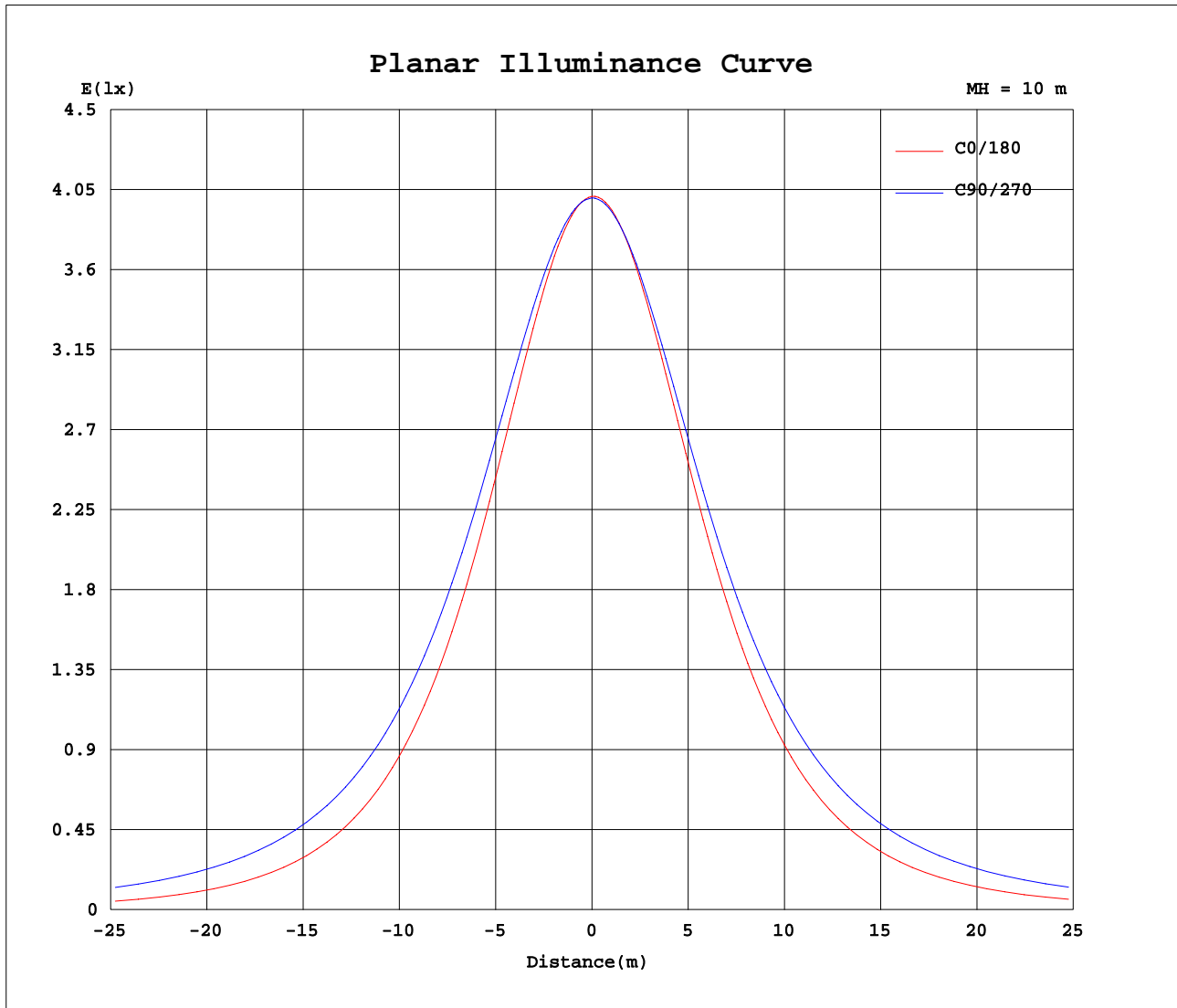
AvgL	cd/m2
L_0~180(65)av	4824
L_0~180(75)av	3576
L_0~180(85)av	1534
L_90~270(65)av	9875
L_90~270(75)av	13758
L_90~270(85)av	33967
L_45(65)av	7877
L_45(75)av	10141
L_45(85)av	22882

Standard: GB/T 29293-2012

C Range: 0 - 360DEG
 C Interval: 22.5DEG
 Test Speed: HIGH
 Temperature:25.2DEG
 Operators:ben

γ Range: 0 - 180DEG
 γ Interval: 1.0DEG
 Test System:EVERFINE GO-R5000_V2 SYSTEM V2.0.351
 Humidity:45%
 Test Distance:2.447m [K=1.0000]
 Remarks:

Planar Illuminance Curve



C Range: 0 - 360DEG
C Interval: 22.5DEG
Test Speed: HIGH
Temperature: 25.2DEG
Operators: ben

γ Range: 0 - 180DEG
 γ Interval: 1.0DEG
Test System: EVERFINE GO-R5000_V2 SYSTEM V2.0.351
Humidity: 45%
Test Distance: 2.447m [K=1.0000]
Remarks:

LUMINOUS DISTRIBUTION INTENSITY DATA

Test:U:120.0V I:0.1935A P:22.75W PF:0.9794 Lamp Flux:1703.36x1 lm		
NAME:4906BN-24	TYPE:N/A	WEIGHT:N/A
SPEC.:N/A	DIM.: N/A	SERIAL No.:N/A
MFR.:	SUR.:N/A	Shielding Angle:N/A

Table--1

UNIT: cd

C(DEG) γ (DEG)	0	22.5	45	67.5	90	112.5	135	157.5	180	202.5	225	247.5	270	292.5	315	337.5			
0	400	400	400	400	400	400	400	400	400	400	400	400	400	400	400	400			
5	397	397	398	398	399	399	399	399	400	399	400	400	399	399	398	398			
10	390	390	392	394	395	395	395	394	394	395	396	396	396	394	393	391			
15	379	380	383	387	390	390	387	385	385	386	389	390	390	388	384	381			
20	364	366	372	379	382	382	377	373	373	375	379	382	383	379	373	367			
25	345	349	358	368	373	372	365	358	356	360	366	372	374	368	359	350			
30	324	329	343	356	363	360	350	339	337	341	352	361	363	356	342	330			
35	300	307	325	342	350	346	332	318	315	321	335	347	350	342	325	308			
40	273	283	305	326	336	330	313	295	289	298	316	332	337	326	305	283			
45	244	257	284	309	320	313	293	269	261	273	296	316	322	309	284	258			
50	213	230	262	290	303	295	271	242	232	247	275	299	305	291	262	230			
55	180	201	240	271	285	275	248	214	200	219	253	280	288	273	240	202			
60	147	173	217	252	267	256	225	186	167	191	231	261	270	253	217	173			
65	112	145	194	233	249	237	202	157	133	163	208	242	252	234	194	145			
70	78.1	118	173	214	230	218	180	129	97.9	135	186	223	234	215	173	116			
75	46.3	93.1	153	195	212	199	159	102	64.8	108	165	203	215	196	152	91.3			
80	19.5	72.3	135	178	194	180	139	78.9	34.9	85.0	145	185	197	178	133	69.4			
85	3.77	54.9	117	160	176	162	121	59.4	12.3	65.0	126	167	179	160	115	51.5			
90	0.29	42.5	108	151	166	152	108	44.0	0.37	48.7	109	149	162	143	98.7	37.9			
95	0.69	34.0	90.3	131	145	131	91.6	34.0	0.24	36.4	93.2	132	144	126	84.2	28.1			
100	1.62	27.1	79.9	119	133	119	82.3	26.9	0.76	27.6	79.4	116	128	111	71.6	21.7			
105	2.89	21.2	69.1	105	119	105	69.2	20.7	1.82	21.7	67.2	101	112	97.0	60.7	17.5			
110	4.38	18.1	57.3	92.3	105	92.3	57.4	17.4	3.26	17.7	56.7	87.7	97.8	84.0	51.3	14.7			
115	5.92	16.0	47.7	78.1	90.2	78.4	47.7	15.2	4.80	14.9	47.7	75.2	84.4	72.1	43.4	12.9			
120	7.47	14.8	40.8	65.8	75.6	65.8	40.6	14.0	6.44	13.0	40.0	64.0	72.1	61.4	36.6	11.7			
125	8.97	14.2	34.9	55.8	64.5	55.7	34.5	13.6	8.02	11.9	33.4	53.9	61.0	51.9	30.8	11.0			
130	10.4	14.0	29.9	47.2	54.3	47.0	29.5	13.5	9.54	11.1	27.8	44.8	50.9	43.3	25.9	10.6			
135	11.8	14.1	25.9	39.6	45.2	39.4	25.4	13.7	11.0	10.7	23.0	36.7	41.8	35.7	22.1	10.6			
140	13.1	14.5	22.7	33.2	37.5	32.9	22.4	14.1	12.3	10.6	19.0	29.5	33.9	29.4	19.1	10.9			
145	14.2	15.0	20.5	27.8	30.9	27.5	20.1	14.6	13.5	10.7	15.7	23.4	27.1	24.3	17.0	11.3			
150	15.3	15.4	18.9	23.6	25.7	23.5	18.6	15.1	14.6	11.8	13.4	18.5	21.5	20.1	15.4	11.8			
155	16.2	16.0	17.9	20.7	21.9	20.5	17.6	15.3	15.6	13.4	12.3	15.0	17.2	16.9	14.3	12.4			
160	16.2	16.2	17.3	18.7	19.3	18.6	17.1	15.8	16.2	14.9	12.8	13.1	14.2	14.4	13.4	13.0			
165	14.2	16.3	17.1	17.5	17.7	17.4	16.1	14.8	14.5	14.2	13.0	13.1	13.0	13.1	13.1	14.1			
170	12.1	16.3	16.7	17.1	17.0	16.7	14.4	12.8	12.4	12.4	12.0	12.6	13.7	14.1	14.5	14.3			
175	10.5	11.5	14.4	15.8	15.7	13.3	11.1	11.0	10.5	10.4	10.2	10.0	11.8	12.4	13.2	12.8			
180	12.6	12.2	11.7	6.63	0.80	7.41	10.7	11.7	12.4	12.4	12.0	11.2	8.29	6.33	7.71	10.9			

C Range: 0 - 360DEG
 C Interval: 22.5DEG
 Test Speed: HIGH
 Temperature:25.2DEG
 Operators:ben

γ Range: 0 - 180DEG
 γ Interval: 1.0DEG
 Test System:EVERFINE GO-R5000_V2 SYSTEM V2.0.351
 Humidity:45%
 Test Distance:2.447m [K=1.0000]
 Remarks: