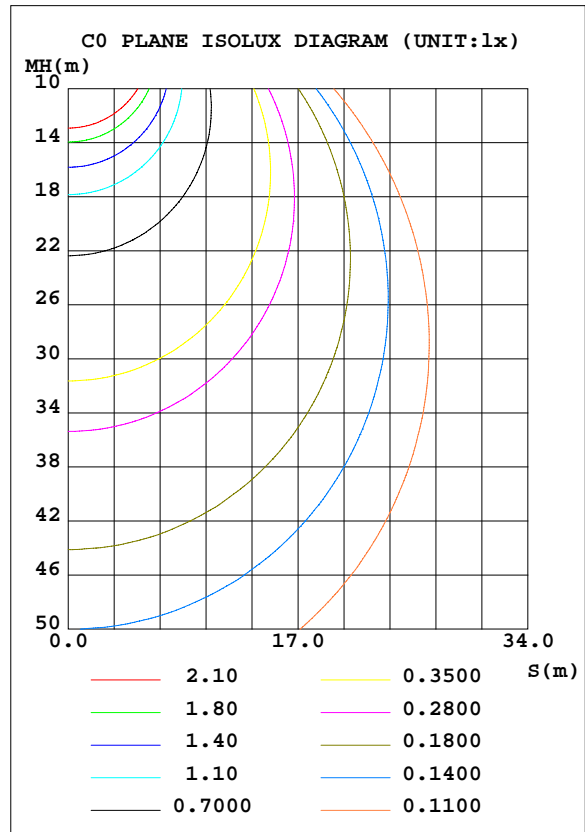
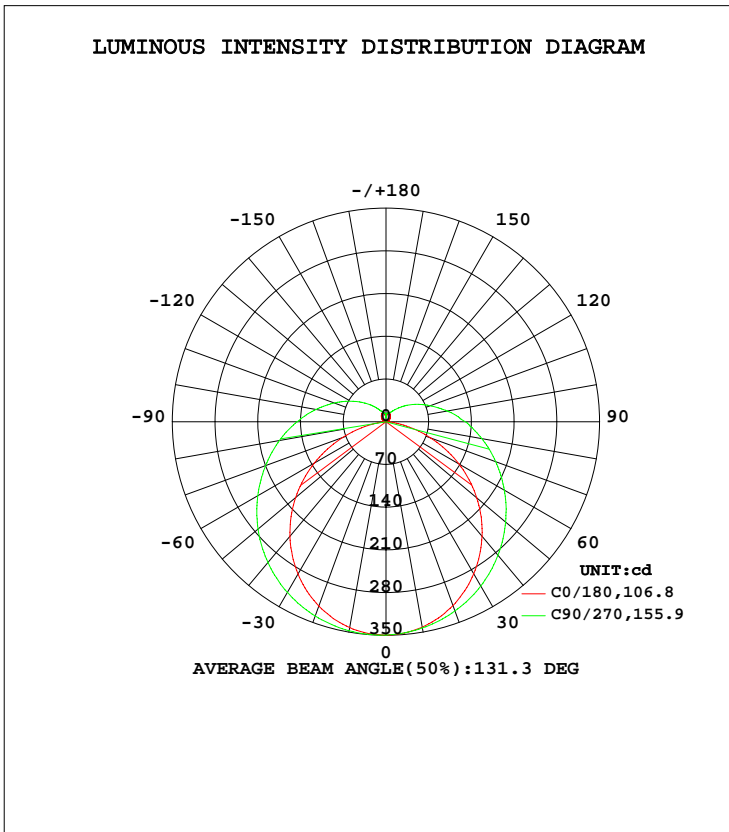


LUMINAIRE PHOTOMETRIC TEST REPORT

Test:U:120.1V I:0.1717A P:20.11W PF:0.9753 Lamp Flux:1469.31x1 lm		
NAME:4906BN-18	TYPE:N/A	WEIGHT:N/A
SPEC.:N/A	DIM.: N/A	SERIAL No.:N/A
MFR.:	SUR.:N/A	Shielding Angle:N/A

DATA OF LAMP		PHOTOMETRIC DATA			
MODEL	4906BN-18	Imax(cd)	350.0	S/MH(C0/180)	1.23
NOMINAL POWER(W)	20	LOR(%)	100.0	S/MH(C90/270)	1.33
RATED VOLTAGE(V)	120	TOTAL FLUX(lm)	1469.3	η UP, DN(C0-180)	8.5,43.0
NOMINAL FLUX(lm)	1469.31	CIE CLASS	SEMI-D.	η UP, DN(C180-360)	7.4,41.0
LAMPS INSIDE	1	η up(%)	16.0	CIBSE SHR NOM	1.50
TEST VOLTAGE(V)	120	η down(%)	84.0	CIBSE SHR MAX	1.50



C Range: 0 - 360DEG
 C Interval: 22.5DEG
 Test Speed: 10.0deg/s
 Temperature:25.2DEG
 Operators:ben

γ Range: 0 - 180DEG
 γ Interval: 1.0DEG
 Test System:EVERFINE GO-R5000_V2 SYSTEM V2.0.351
 Humidity:45%
 Test Distance:2.447m [K=1.0000]
 Remarks:

ZONAL FLUX DIAGRAM

ZONAL FLUX DIAGRAM:

γ	C0	C45	C90	C135	C180	C225	C270	C315	γ	Φ zone	Φ total	%lum,lamp
10	342.6	346.0	347.8	345.2	341.9	342.1	343.1	342.5	0- 10	33.10	33.10	2.25,2.25
20	321.4	331.4	338.7	329.5	320.6	324.3	330.0	325.1	10- 20	95.17	128.3	8.73,8.73
30	288.3	307.8	322.9	305.1	287.6	298.0	310.7	298.5	20- 30	145.8	274.1	18.7,18.7
40	245.0	276.7	300.9	273.4	244.9	265.2	285.5	264.6	30- 40	179.6	453.7	30.9,30.9
50	193.3	240.0	273.6	236.1	194.2	227.0	255.8	225.8	40- 50	193.6	647.3	44.1,44.1
60	135.7	200.3	242.5	196.0	137.9	186.9	223.9	184.6	50- 60	188.0	835.3	56.8,56.8
70	75.54	160.4	209.8	155.9	78.32	148.1	191.2	144.6	60- 70	165.8	1001	68.1,68.1
80	21.81	124.3	177.4	119.6	25.20	112.4	159.5	108.7	70- 80	133.5	1135	77.2,77.2
90	0.2424	93.53	145.7	89.63	0.0952	83.90	130.0	81.37	80- 90	100.3	1235	84,84
100	1.254	69.20	116.5	65.08	0.8291	59.80	102.0	56.79	90-100	74.46	1309	89.1,89.1
110	3.742	50.55	90.22	47.24	3.209	43.08	77.35	40.74	100-110	53.93	1363	92.8,92.8
120	6.695	37.15	67.58	34.83	6.143	31.09	57.32	29.59	110-120	38.25	1401	95.4,95.4
130	9.456	27.56	48.82	26.04	8.917	22.76	40.86	21.79	120-130	26.30	1428	97.2,97.2
140	12.09	20.91	34.18	19.93	11.51	17.30	28.18	17.36	130-140	17.52	1445	98.4,98.4
150	14.34	16.96	23.39	16.54	13.77	14.19	19.70	15.45	140-150	11.40	1457	99.1,99.1
160	15.94	14.83	17.11	14.72	15.43	14.06	15.16	14.56	150-160	7.276	1464	99.6,99.6
170	12.66	14.57	14.48	13.74	12.32	12.90	14.68	15.08	160-170	4.168	1468	99.9,99.9
180	9.786	8.543	8.776	5.643	9.231	8.436	5.959	6.176	170-180	1.149	1469	100,100
DEG	LUMINOUS INTENSITY:cd Less than 25% Percent = 16.2 %									UNIT:lm		

Conical surface Flux(90deg): 549.97 lm

%lum = 37.4%
 %lamp = 37.4%

Conical surface Flux(120deg): 835.26 lm

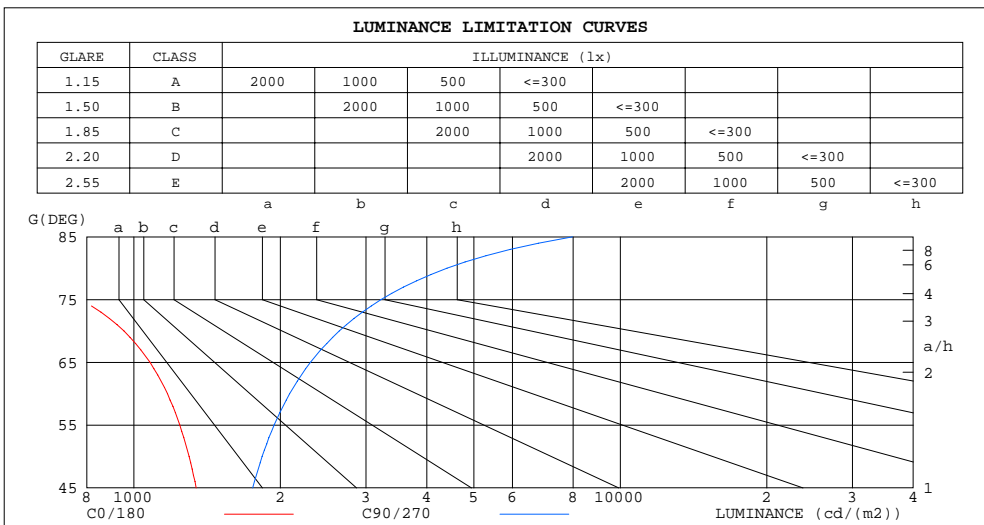
%lum = 56.8%
 %lamp = 56.8%

C Range: 0 - 360DEG
 C Interval: 22.5DEG
 Test Speed: 10.0deg/s
 Temperature:25.2DEG
 Operators:ben

γ Range: 0 - 180DEG
 γ Interval: 1.0DEG
 Test System:EVERFINE GO-R5000_V2 SYSTEM V2.0.351
 Humidity:45%
 Test Distance:2.447m [K=1.0000]
 Remarks:

LUMINANCE LIMITATION CURVES

Test:U:120.1V I:0.1717A P:20.11W PF:0.9753 Lamp Flux:1469.31x1 lm		
NAME:4906BN-18	TYPE:N/A	WEIGHT:N/A
SPEC.:N/A	DIM.: N/A	SERIAL No.:N/A
MFR.:	SUR.:N/A	Shielding Angle:N/A



LUMINANCE cd/(m2)		
G (DEG)	C0/180	C90/270
85	260	7975
80	542	4404
75	781	3221
70	954	2644
65	1079	2307
60	1172	2091
55	1243	1942
50	1299	1835
45	1343	1754

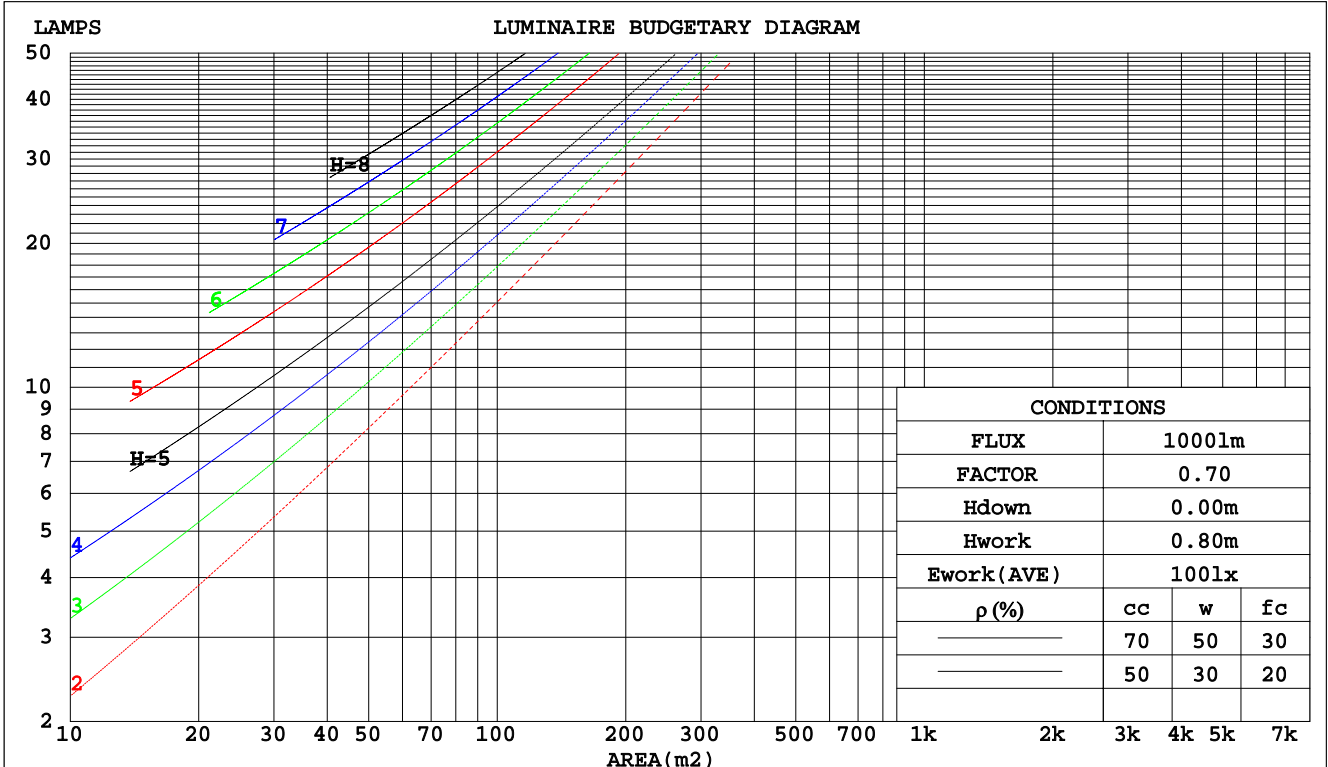
C Range: 0 - 360DEG
 C Interval: 22.5DEG
 Test Speed: 10.0deg/s
 Temperature:25.2DEG
 Operators:ben

γ Range: 0 - 180DEG
 γ Interval: 1.0DEG
 Test System:EVERFINE GO-R5000_V2 SYSTEM V2.0.351
 Humidity:45%
 Test Distance:2.447m [K=1.0000]
 Remarks:

CU AND LUMINAIRE BUDGETARY ESTIMATE DIAGRAM

Test:U:120.1V I:0.1717A P:20.11W PF:0.9753 Lamp Flux:1469.31x1 lm		
NAME:4906BN-18	TYPE:N/A	WEIGHT:N/A
SPEC.:N/A	DIM.: N/A	SERIAL No.:N/A
MFR.:	SUR.:N/A	Shielding Angle:N/A

pcc	80%			70%			50%			30%			10%			0
	50%	30%	10%	50%	30%	10%	50%	30%	10%	50%	30%	10%	50%	30%	10%	0
pw																
pfc	20%			20%			20%			20%			20%			0
RCR	RCR:Room Cavity Ratio															
	Coefficients of Utilization(CU)															
0.0	1.15	1.15	1.15	1.11	1.11	1.11	1.02	1.02	1.02	.95	.95	.95	.87	.87	.87	.84
1.0	.97	.91	.87	.93	.88	.84	.85	.82	.78	.79	.76	.73	.73	.70	.68	.65
2.0	.83	.75	.69	.80	.73	.67	.73	.68	.63	.68	.63	.59	.62	.59	.55	.52
3.0	.72	.63	.56	.69	.61	.55	.64	.57	.51	.59	.53	.49	.54	.50	.46	.43
4.0	.63	.54	.47	.61	.52	.46	.56	.49	.43	.52	.46	.41	.48	.43	.39	.36
5.0	.56	.47	.40	.54	.45	.39	.50	.43	.37	.47	.40	.35	.43	.38	.33	.31
6.0	.50	.41	.34	.49	.40	.34	.45	.38	.32	.42	.36	.31	.39	.33	.29	.27
7.0	.46	.37	.30	.44	.36	.30	.41	.34	.28	.38	.32	.27	.35	.30	.26	.23
8.0	.41	.33	.27	.40	.32	.26	.37	.30	.25	.35	.29	.24	.33	.27	.23	.21
9.0	.38	.30	.24	.37	.29	.23	.34	.27	.22	.32	.26	.22	.30	.25	.21	.19
10.0	.35	.27	.22	.34	.26	.21	.32	.25	.20	.30	.24	.19	.28	.22	.19	.17



C Range: 0 - 360DEG
 C Interval: 22.5DEG
 Test Speed: 10.0deg/s
 Temperature:25.2DEG
 Operators:ben

γ Range: 0 - 180DEG
 γ Interval: 1.0DEG
 Test System:EVERFINE GO-R5000_V2 SYSTEM V2.0.351
 Humidity:45%
 Test Distance:2.447m [K=1.0000]
 Remarks:

WEC AND CCEC

Test:U:120.1V I:0.1717A P:20.11W PF:0.9753 Lamp Flux:1469.31x1 lm		
NAME:4906BN-18	TYPE:N/A	WEIGHT:N/A
SPEC.:N/A	DIM.: N/A	SERIAL No.:N/A
MFR.:	SUR.:N/A	Shielding Angle:N/A

ρcc	80%			70%			50%			30%			10%			0
ρw	50%	30%	10%	50%	30%	10%	50%	30%	10%	50%	30%	10%	50%	30%	10%	0
ρfc	20%			20%			20%			20%			20%			0
RCR	RCR:Room Cavity Ratio						Wall Exitance Coefficients(WEC)									
0.0																
1.0	.375	.213	.068	.363	.207	.066	.340	.195	.062	.320	.184	.059	.300	.174	.056	
2.0	.327	.179	.055	.316	.174	.054	.296	.165	.051	.277	.156	.049	.260	.147	.046	
3.0	.292	.155	.047	.282	.151	.046	.264	.143	.043	.247	.135	.041	.231	.128	.040	
4.0	.264	.137	.040	.255	.133	.039	.238	.126	.038	.223	.120	.036	.208	.113	.034	
5.0	.240	.122	.035	.232	.119	.035	.217	.113	.033	.203	.107	.032	.190	.101	.030	
6.0	.220	.110	.032	.213	.108	.031	.199	.102	.030	.187	.097	.028	.174	.092	.027	
7.0	.204	.101	.029	.197	.098	.028	.184	.093	.027	.173	.088	.026	.161	.084	.025	
8.0	.189	.092	.026	.183	.090	.025	.171	.086	.024	.161	.081	.023	.150	.077	.022	
9.0	.176	.085	.024	.171	.083	.023	.160	.079	.022	.150	.075	.022	.141	.071	.021	
10.0	.165	.079	.022	.160	.077	.022	.150	.074	.021	.141	.070	.020	.132	.066	.019	

ρcc	80%			70%			50%			30%			10%			0
ρw	50%	30%	10%	50%	30%	10%	50%	30%	10%	50%	30%	10%	50%	30%	10%	0
ρfc	20%			20%			20%			20%			20%			0
RCR	RCR:Room Cavity Ratio						Ceiling Cavity Exitance Coefficients(CCEC)									
0.0	.312	.312	.312	.267	.267	.267	.182	.182	.182	.105	.105	.105	.033	.033	.033	
1.0	.307	.278	.252	.263	.239	.217	.180	.164	.150	.104	.095	.087	.033	.031	.028	
2.0	.300	.255	.217	.257	.220	.188	.176	.152	.131	.102	.088	.077	.033	.029	.025	
3.0	.293	.239	.195	.251	.206	.169	.172	.143	.119	.100	.083	.070	.032	.027	.023	
4.0	.285	.226	.181	.245	.195	.157	.168	.136	.111	.097	.080	.065	.031	.026	.022	
5.0	.277	.216	.171	.238	.187	.149	.164	.131	.105	.095	.077	.062	.031	.025	.021	
6.0	.270	.208	.164	.232	.180	.142	.160	.126	.101	.093	.074	.060	.030	.024	.020	
7.0	.263	.201	.158	.226	.175	.138	.156	.122	.098	.091	.072	.058	.029	.024	.019	
8.0	.256	.196	.154	.221	.170	.135	.153	.119	.095	.089	.070	.057	.029	.023	.019	
9.0	.250	.191	.151	.215	.166	.132	.149	.117	.094	.087	.069	.056	.028	.023	.018	
10.0	.244	.187	.149	.211	.162	.130	.146	.114	.092	.085	.067	.055	.028	.022	.018	

C Range: 0 - 360DEG
 C Interval: 22.5DEG
 Test Speed: 10.0deg/s
 Temperature:25.2DEG
 Operators:ben

γ Range: 0 - 180DEG
 γ Interval: 1.0DEG
 Test System:EVERFINE GO-R5000_V2 SYSTEM V2.0.351
 Humidity:45%
 Test Distance:2.447m [K=1.0000]
 Remarks:

UGR(Unified Glare Rating) Table

Test:U:120.1V I:0.1717A P:20.11W PF:0.9753 Lamp Flux:1469.3lx1 lm										
NAME:4906BN-18					TYPE:N/A			WEIGHT:N/A		
SPEC.:N/A					DIM.: N/A			SERIAL No.:N/A		
MFR.:					SUR.:N/A			Shielding Angle:N/A		
ceiling/cavity	0.7	0.7	0.5	0.5	0.3	0.7	0.7	0.5	0.5	0.3
walls	0.5	0.3	0.5	0.3	0.3	0.5	0.3	0.5	0.3	0.3
working plane	0.2	0.2	0.2	0.2	0.2	0.2	0.2	0.2	0.2	0.2
Room dimensions	Viewed crosswise					Viewed endwise				
x = 2H y = 2H	12.5	13.8	12.9	14.3	14.8	14.7	16.1	15.2	16.6	17.1
3H	13.8	15.1	14.3	15.6	16.1	17.3	18.6	17.8	19.1	19.7
4H	14.3	15.5	14.8	16.0	16.6	18.8	20.0	19.3	20.5	21.1
6H	14.5	15.7	15.1	16.2	16.8	20.4	21.5	20.9	22.1	22.7
8H	14.6	15.7	15.1	16.2	16.9	21.3	22.4	21.8	22.9	23.5
12H	14.6	15.6	15.2	16.2	16.8	22.3	23.3	22.8	23.9	24.5
4H 2H	13.6	14.8	14.1	15.4	15.9	15.2	16.5	15.8	17.0	17.6
3H	15.2	16.3	15.8	16.9	17.5	18.1	19.2	18.7	19.8	20.4
4H	15.9	16.9	16.5	17.5	18.2	19.8	20.7	20.4	21.3	22.0
6H	16.4	17.3	17.0	17.9	18.6	21.6	22.5	22.2	23.1	23.8
8H	16.6	17.4	17.2	18.0	18.7	22.6	23.4	23.2	24.1	24.8
12H	16.6	17.4	17.3	18.0	18.8	23.8	24.5	24.4	25.2	25.9
8H 4H	17.1	17.9	17.7	18.5	19.2	20.1	20.9	20.7	21.5	22.3
6H	17.9	18.6	18.6	19.3	20.1	22.2	22.9	22.9	23.6	24.3
8H	18.3	18.9	19.0	19.6	20.4	23.5	24.1	24.1	24.8	25.5
12H	18.6	19.1	19.3	19.8	20.6	24.9	25.4	25.6	26.1	26.9
12H 4H	17.4	18.2	18.1	18.8	19.6	20.1	20.9	20.7	21.5	22.2
6H	18.6	19.2	19.3	19.9	20.7	22.3	22.9	23.0	23.6	24.4
8H	19.1	19.7	19.8	20.4	21.2	23.7	24.2	24.4	24.9	25.7
Variations with the observer position at spacings:										
S = 1.0H	+ 0.1 / - 0.1					+ 0.1 / - 0.1				
1.5H	+ 0.2 / - 0.3					+ 0.2 / - 0.3				
2.0H	+ 0.2 / - 0.4					+ 0.2 / - 0.3				

CIE Pub.117 Corrected 1469 lm Total Lamp Luminous Flux.(8log(F/F0) = 1.3)

C Range: 0 - 360DEG
 C Interval: 22.5DEG
 Test Speed: 10.0deg/s
 Temperature:25.2DEG
 Operators:ben

γ Range: 0 - 180DEG
 γ Interval: 1.0DEG
 Test System:EVERFINE GO-R5000_V2 SYSTEM V2.0.351
 Humidity:45%
 Test Distance:2.447m [K=1.0000]
 Remarks:

UTILIZATION FACTORS TABLE

Test:U:120.1V I:0.1717A P:20.11W PF:0.9753 Lamp Flux:1469.31x1 lm		
NAME:4906BN-18	TYPE:N/A	WEIGHT:N/A
SPEC.:N/A	DIM.: N/A	SERIAL No.:N/A
MFR.:	SUR.:N/A	Shielding Angle:N/A

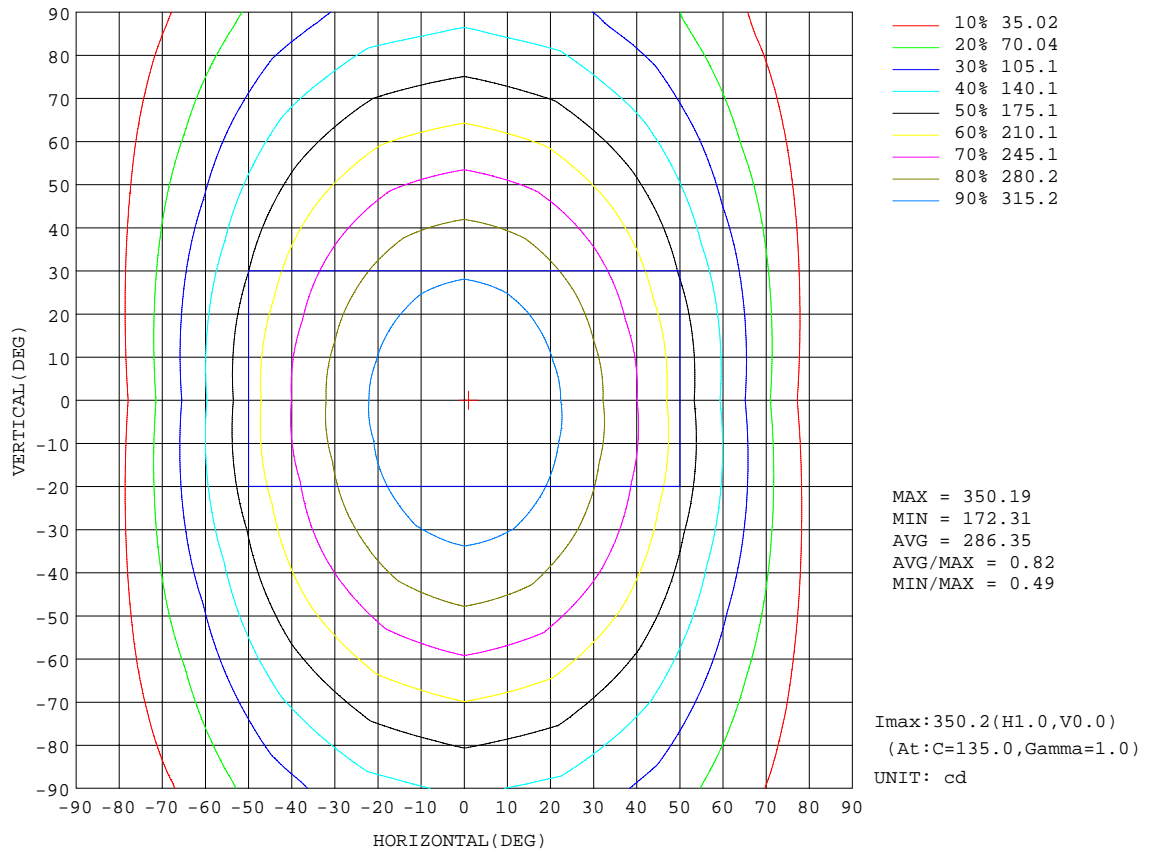
REFLECTANCE										
Ceiling	0.8	0.8	0.8	0.7	0.7	0.7	0.5	0.5	0.5	0
Walls	0.7	0.5	0.3	0.7	0.5	0.3	0.7	0.5	0.3	0
Working plane	0.2	0.2	0.2	0.2	0.2	0.2	0.2	0.2	0.2	0
ROOM INDEX	UTILIZATION FACTORS(PERCENT) $k(RI) \times RCR = 5$									
k = 0.60	49	37	30	48	36	29	46	36	29	22
0.80	58	46	38	57	45	37	54	43	36	29
1.00	66	53	45	64	52	45	61	53	44	35
1.25	73	61	52	71	59	52	67	57	50	41
1.50	78	66	58	76	65	57	71	62	55	45
2.00	85	75	67	82	73	65	77	69	62	51
2.50	90	80	72	87	78	70	81	73	67	55
3.00	93	84	77	90	82	75	84	77	72	59
4.00	98	90	84	94	87	82	87	82	77	63
5.00	101	94	89	97	91	86	90	85	81	66
ROOM INDEX	UF(total)									Direct
According to DIN EN 13032-2 2004			Suspended				SHRNOM = 1.25			

C Range: 0 - 360DEG
 C Interval: 22.5DEG
 Test Speed: 10.0deg/s
 Temperature:25.2DEG
 Operators:ben

γ Range: 0 - 180DEG
 γ Interval: 1.0DEG
 Test System:EVERFINE GO-R5000_V2 SYSTEM V2.0.351
 Humidity:45%
 Test Distance:2.447m [K=1.0000]
 Remarks:

ISOCANDELA DIAGRAM

Test:U:120.1V I:0.1717A P:20.11W PF:0.9753 Lamp Flux:1469.31x1 lm		
NAME:4906BN-18	TYPE:N/A	WEIGHT:N/A
SPEC.:N/A	DIM.: N/A	SERIAL No.:N/A
MFR.:	SUR.:N/A	Shielding Angle:N/A

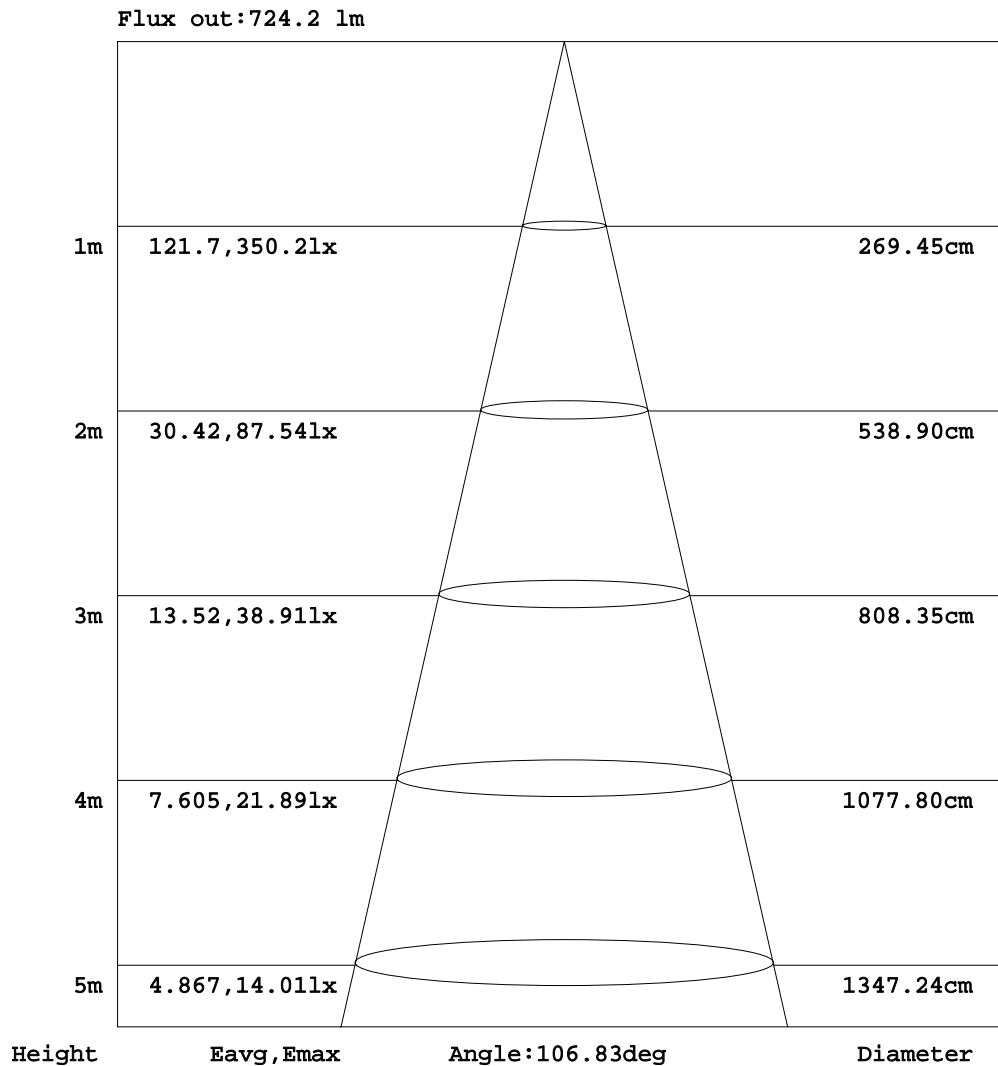


C Range: 0 - 360DEG
 C Interval: 22.5DEG
 Test Speed: 10.0deg/s
 Temperature: 25.2DEG
 Operators: ben

γ Range: 0 - 180DEG
 γ Interval: 1.0DEG
 Test System: EVERFINE GO-R5000_V2 SYSTEM V2.0.351
 Humidity: 45%
 Test Distance: 2.447m [K=1.0000]
 Remarks:

AAI Figure

Test:U:120.1V I:0.1717A P:20.11W PF:0.9753 Lamp Flux:1469.31x1 lm		
NAME:4906BN-18	TYPE:N/A	WEIGHT:N/A
SPEC.:N/A	DIM.: N/A	SERIAL No.:N/A
MFR.:	SUR.:N/A	Shielding Angle:N/A



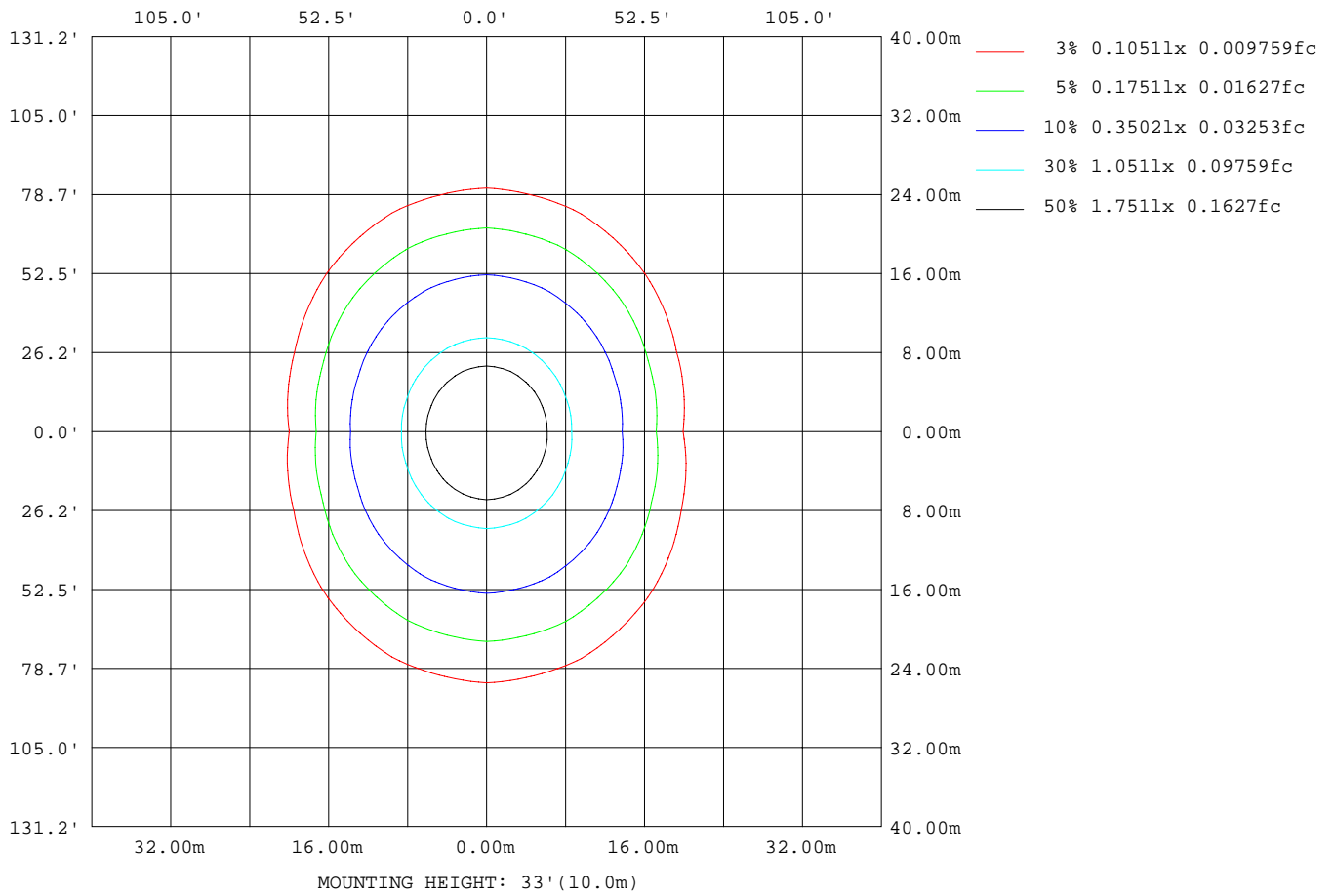
Note:The Curves indicate the illuminated area and the average illumination when the luminaire is at different distance.

C Range: 0 - 360DEG
 C Interval: 22.5DEG
 Test Speed: 10.0deg/s
 Temperature:25.2DEG
 Operators:ben

γ Range: 0 - 180DEG
 γ Interval: 1.0DEG
 Test System:EVERFINE GO-R5000_V2 SYSTEM V2.0.351
 Humidity:45%
 Test Distance:2.447m [K=1.0000]
 Remarks:

ISOLUX DIAGRAM

Test:U:120.1V I:0.1717A P:20.11W PF:0.9753 Lamp Flux:1469.31x1 lm		
NAME:4906BN-18	TYPE:N/A	WEIGHT:N/A
SPEC.:N/A	DIM.: N/A	SERIAL No.:N/A
MFR.:	SUR.:N/A	Shielding Angle:N/A



C Range: 0 - 360DEG
 C Interval: 22.5DEG
 Test Speed: 10.0deg/s
 Temperature:25.2DEG
 Operators:ben

γ Range: 0 - 180DEG
 γ Interval: 1.0DEG
 Test System:EVERFINE GO-R5000_V2 SYSTEM V2.0.351
 Humidity:45%
 Test Distance:2.447m [K=1.0000]
 Remarks:

LED Avg.L Report

Test:U:120.1V I:0.1717A P:20.11W PF:0.9753 Lamp Flux:1469.31x1 lm		
NAME:4906BN-18	TYPE:N/A	WEIGHT:N/A
SPEC.:N/A	DIM.: N/A	SERIAL No.:N/A
MFR.:	SUR.:N/A	Shielding Angle:N/A

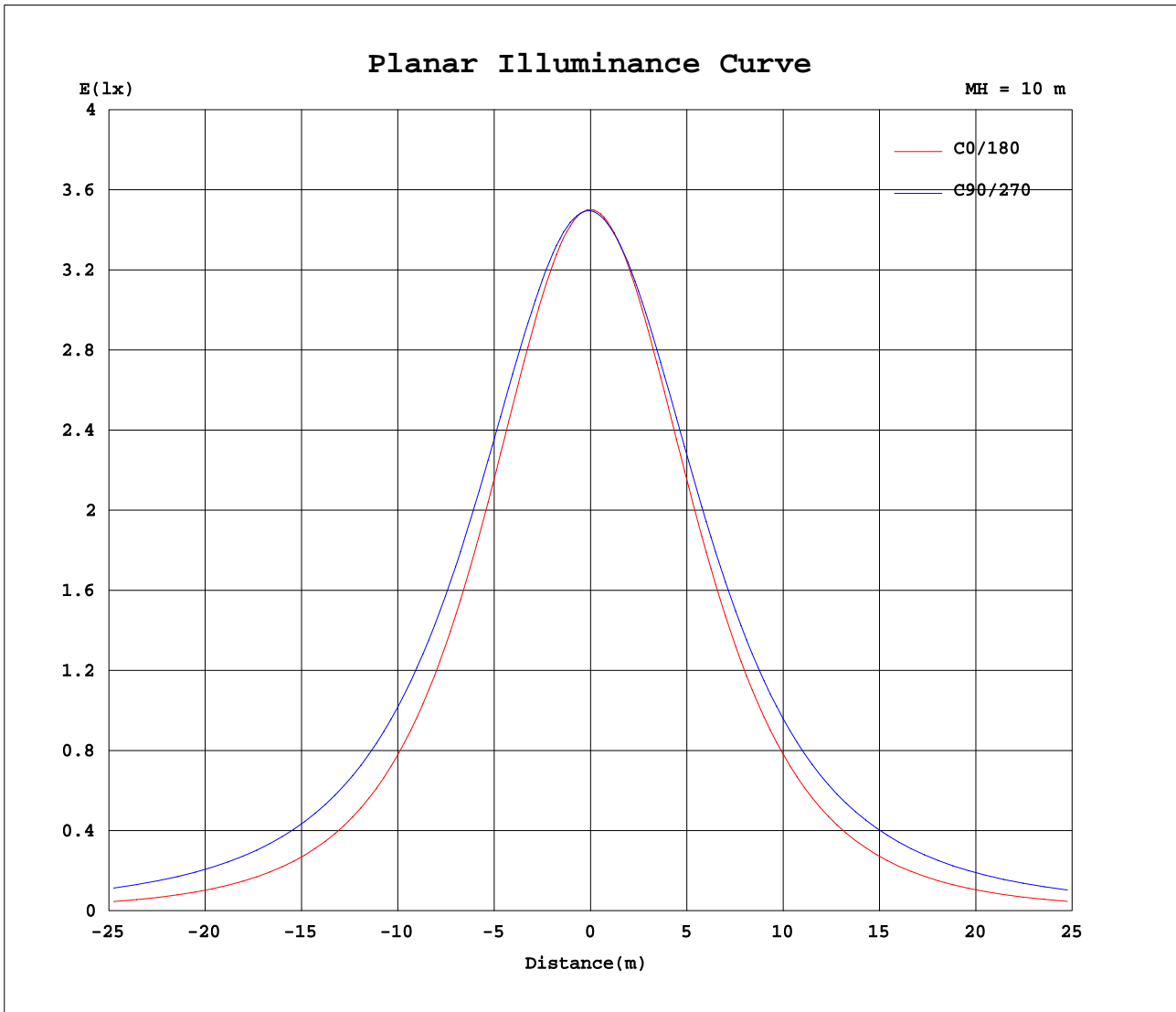
AvgL	cd/m2
L_0~180(65)av	1088
L_0~180(75)av	808
L_0~180(85)av	313
L_90~270(65)av	2212
L_90~270(75)av	3071
L_90~270(85)av	7550
L_45(65)av	1752
L_45(75)av	2226
L_45(85)av	4969

Standard: GB/T 29293-2012

C Range: 0 - 360DEG
 C Interval: 22.5DEG
 Test Speed: 10.0deg/s
 Temperature:25.2DEG
 Operators:ben

γ Range: 0 - 180DEG
 γ Interval: 1.0DEG
 Test System:EVERFINE GO-R5000_V2 SYSTEM V2.0.351
 Humidity:45%
 Test Distance:2.447m [K=1.0000]
 Remarks:

Planar Illuminance Curve



C Range: 0 - 360DEG
C Interval: 22.5DEG
Test Speed: 10.0deg/s
Temperature: 25.2DEG
Operators: ben

γ Range: 0 - 180DEG
 γ Interval: 1.0DEG
Test System: EVERFINE GO-R5000_V2 SYSTEM V2.0.351
Humidity: 45%
Test Distance: 2.447m [K=1.0000]
Remarks:

LUMINOUS DISTRIBUTION INTENSITY DATA

Test:U:120.1V I:0.1717A P:20.11W PF:0.9753 Lamp Flux:1469.31x1 lm		
NAME:4906BN-18	TYPE:N/A	WEIGHT:N/A
SPEC.:N/A	DIM.: N/A	SERIAL No.:N/A
MFR.:	SUR.:N/A	Shielding Angle:N/A

Table--1

UNIT: cd

C(DEG) γ (DEG)	0	22.5	45	67.5	90	112.5	135	157.5	180	202.5	225	247.5	270	292.5	315	337.5			
0	350	350	350	350	350	350	350	350	350	350	350	350	350	350	350	350			
5	348	348	349	350	349	350	349	348	347	347	347	347	347	348	348	348			
10	343	344	346	347	348	347	345	343	342	342	342	343	343	343	343	342			
15	334	336	340	343	344	342	339	334	333	333	334	336	337	337	335	334			
20	321	325	331	337	339	336	329	323	321	321	324	328	330	329	325	322			
25	306	312	320	329	332	328	319	309	306	307	312	318	321	319	313	307			
30	288	295	308	319	323	317	305	293	288	290	298	307	311	307	298	291			
35	268	277	293	308	313	306	291	274	267	271	282	294	299	294	283	271			
40	245	256	277	295	301	292	273	253	245	250	265	280	285	279	265	250			
45	220	234	259	280	288	278	256	231	221	228	246	264	271	264	246	227			
50	193	211	240	265	274	262	236	207	194	205	227	248	256	247	226	203			
55	165	186	220	248	258	246	216	182	167	180	207	231	240	230	206	178			
60	136	161	200	231	243	228	196	157	138	155	187	214	224	212	185	152			
65	106	136	180	214	226	211	176	132	108	131	167	196	208	195	164	127			
70	75.5	111	160	197	210	194	156	107	78.3	106	148	180	191	178	145	102			
75	46.8	88.7	142	180	193	177	137	84.3	50.2	84.0	130	163	175	161	126	78.9			
80	21.8	68.5	124	164	177	161	120	63.9	25.2	64.3	112	147	160	145	109	58.8			
85	5.24	51.9	108	148	161	145	104	46.9	7.40	48.0	96.8	132	144	130	93.2	42.6			
90	0.24	38.7	93.5	132	146	130	89.6	34.1	0.10	35.6	83.9	118	130	116	81.4	31.1			
95	0.56	29.5	80.7	118	131	116	76.6	25.4	0.28	26.3	71.6	104	116	103	68.7	22.5			
100	1.25	23.5	69.2	104	117	102	65.1	19.7	0.83	20.1	59.8	90.8	102	89.1	56.8	17.2			
105	2.35	19.3	59.4	91.5	103	89.1	55.6	16.2	1.87	16.2	50.7	78.7	88.8	77.1	48.1	14.2			
110	3.74	16.6	50.6	79.7	90.2	77.7	47.2	14.1	3.21	13.7	43.1	68.2	77.4	66.8	40.7	12.3			
115	5.21	14.7	43.3	69.1	78.4	67.2	40.5	12.7	4.64	12.3	36.7	58.7	66.8	57.4	34.6	11.2			
120	6.69	13.7	37.2	59.4	67.6	57.8	34.8	12.0	6.14	11.5	31.1	50.2	57.3	49.1	29.6	10.6			
125	8.15	13.0	32.1	50.6	57.8	49.3	30.1	11.7	7.50	11.1	26.5	42.5	48.7	41.6	25.2	10.5			
130	9.46	12.7	27.6	42.9	48.8	41.9	26.0	11.7	8.92	11.1	22.8	35.7	40.9	35.0	21.8	10.7			
135	10.7	12.6	24.0	36.2	41.0	35.4	22.7	11.8	10.2	11.3	19.7	29.9	34.0	29.4	19.2	11.0			
140	12.1	12.6	20.9	30.4	34.2	29.8	19.9	12.0	11.5	11.5	17.3	24.9	28.2	24.9	17.4	11.5			
145	13.3	12.8	18.6	25.5	28.3	25.0	18.0	12.4	12.7	11.7	15.5	20.8	23.4	21.4	16.2	12.1			
150	14.3	13.1	17.0	21.5	23.4	21.3	16.5	12.7	13.8	12.6	14.2	17.7	19.7	18.8	15.4	12.7			
155	15.3	13.4	15.7	18.7	19.8	18.5	15.4	13.1	14.8	14.1	13.6	15.5	17.0	16.7	14.9	13.2			
160	15.9	14.2	14.8	16.5	17.1	16.4	14.7	13.8	15.4	15.2	14.1	14.4	15.2	15.2	14.6	13.9			
165	15.3	14.8	14.5	15.0	15.2	15.0	14.3	14.3	14.9	15.0	14.5	14.5	14.4	14.4	14.3	14.8			
170	12.7	15.1	14.6	14.6	14.5	14.2	13.7	12.5	12.3	12.3	12.9	14.4	14.7	15.1	15.1	14.1			
175	9.39	9.58	13.4	13.3	12.9	12.5	9.53	9.13	9.29	9.34	9.47	10.2	11.9	12.4	12.5	12.5			
180	9.79	8.39	8.54	3.11	8.78	5.21	5.64	8.91	9.23	9.25	8.44	7.32	5.96	3.13	6.18	7.76			

C Range: 0 - 360DEG
 C Interval: 22.5DEG
 Test Speed: 10.0deg/s
 Temperature:25.2DEG
 Operators:ben

γ Range: 0 - 180DEG
 γ Interval: 1.0DEG
 Test System:EVERFINE GO-R5000_V2 SYSTEM V2.0.351
 Humidity:45%
 Test Distance:2.447m [K=1.0000]
 Remarks: