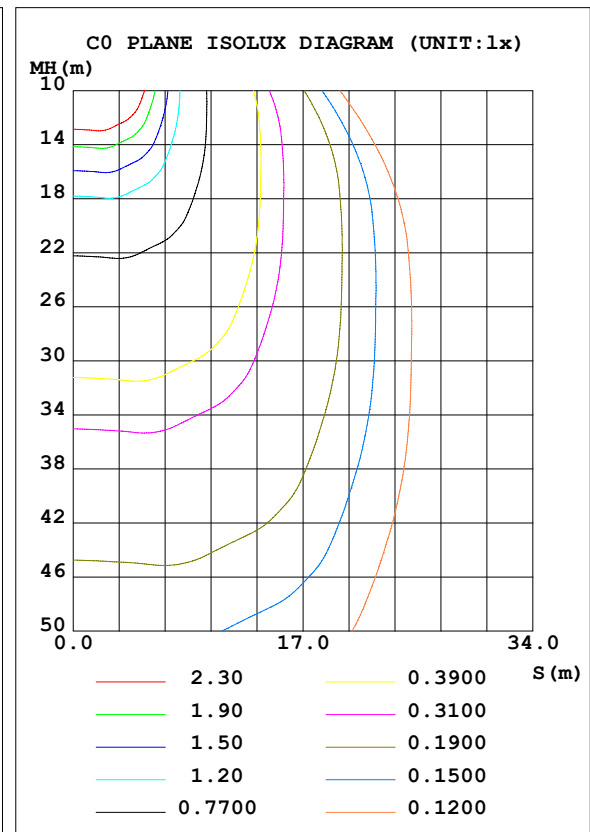
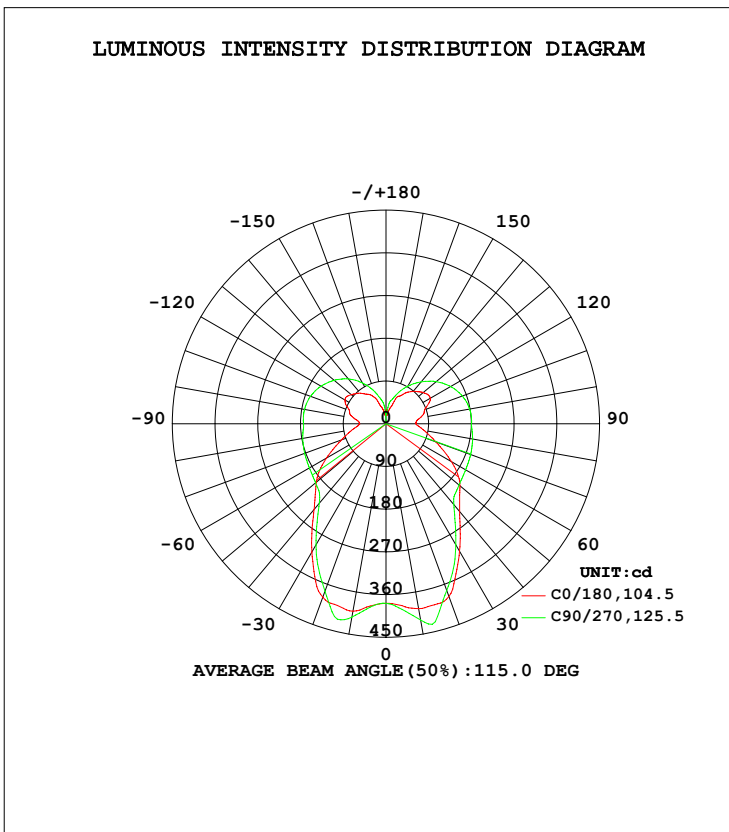


LUMINAIRE PHOTOMETRIC TEST REPORT

Test:U:120.0V I:0.2606A P:30.60W PF:0.9783 Lamp Flux:2183.96x1 lm		
NAME:4904BN-4	TYPE:N/A	WEIGHT:N/A
SPEC.:N/A	DIM.: N/A	SERIAL No.:N/A
MFR.:	SUR.:N/A	Shielding Angle:N/A

DATA OF LAMP		PHOTOMETRIC DATA			
MODEL	4904-4	Imax (cd)	433.6	S/MH (C0/180)	1.21
NOMINAL POWER (W)	30	LOR (%)	100.0	S/MH (C90/270)	1.16
RATED VOLTAGE (V)	120	TOTAL FLUX (lm)	2184.0	η UP, DN (C0-180)	19.5, 30.7
NOMINAL FLUX (lm)	2183.96	CIE CLASS	SEMI-D.	η UP, DN (C180-360)	18.3, 31.5
LAMPS INSIDE	1	η up (%)	37.8	CIBSE SHR NOM	1.25
TEST VOLTAGE (V)	120	η down (%)	62.2	CIBSE SHR MAX	1.30



C Range: 0 - 360DEG
 C Interval: 22.5DEG
 Test Speed: 10.0deg/s
 Temperature: 25.2DEG
 Operators: Monkey

γ Range: 0 - 180DEG
 γ Interval: 1.0DEG
 Test System: EVERFINE GO-R5000_V2 SYSTEM V2.0.351
 Humidity: 45%
 Test Distance: 2.447m [K=1.0000]
 Remarks:

ZONAL FLUX DIAGRAM

ZONAL FLUX DIAGRAM:

γ	C0	C45	C90	C135	C180	C225	C270	C315	γ	Φ zone	Φ total	%lum,lamp
10	401.0	410.5	413.5	398.8	395.4	410.3	419.8	409.5	0- 10	37.70	37.70	1.73,1.73
20	388.9	386.1	375.7	382.6	387.3	381.7	374.1	390.0	10- 20	114.1	151.8	6.95,6.95
30	312.4	303.5	295.2	301.2	310.0	301.6	294.2	306.8	20- 30	158.0	309.8	14.2,14.2
40	235.8	226.0	218.8	230.6	241.6	233.2	222.7	232.7	30- 40	165.2	475.0	21.8,21.8
50	192.1	197.0	193.6	202.0	203.5	210.2	201.0	202.4	40- 50	164.1	639.1	29.3,29.3
60	144.9	188.8	186.3	194.7	159.0	203.4	193.8	194.2	50- 60	174.4	813.6	37.3,37.3
70	100.0	185.0	182.3	190.8	111.7	200.3	189.8	189.7	60- 70	181.2	994.7	45.5,45.5
80	71.54	180.6	178.1	186.5	81.66	195.5	185.3	184.5	70- 80	183.4	1178	53.9,53.9
90	55.69	176.6	173.9	182.2	63.37	189.9	180.3	178.5	80- 90	180.2	1358	62.2,62.2
100	68.78	177.0	174.3	182.5	72.94	184.7	179.0	173.5	90-100	177.5	1536	70.3,70.3
110	82.28	171.3	169.4	176.4	86.69	170.6	171.3	159.2	100-110	169.6	1705	78.1,78.1
120	99.84	158.7	158.3	163.3	107.9	149.5	157.2	138.3	110-120	150.7	1856	85,85
130	95.48	141.5	142.6	145.7	102.5	125.0	138.2	114.7	120-130	123.8	1980	90.7,90.7
140	84.05	119.5	123.4	122.8	89.21	100.7	115.5	93.32	130-140	91.87	2072	94.9,94.9
150	71.52	95.17	99.33	96.35	71.66	76.12	91.37	77.03	140-150	60.65	2132	97.6,97.6
160	50.57	67.30	73.28	66.27	50.40	55.43	66.14	61.24	150-160	34.39	2167	99.2,99.2
170	25.98	45.18	49.45	29.81	24.07	25.70	46.38	46.89	160-170	14.26	2181	99.9,99.9
180	28.78	22.29	0.6969	22.07	28.69	27.44	21.20	21.31	170-180	2.891	2184	100,100
DEG	LUMINOUS INTENSITY:cd Less than 25% Percent = 51.7 %									UNIT:lm		

Conical surface Flux(90deg): 556.17 lm

%lum = 25.5%
 %lamp = 25.5%

Conical surface Flux(120deg): 813.56 lm

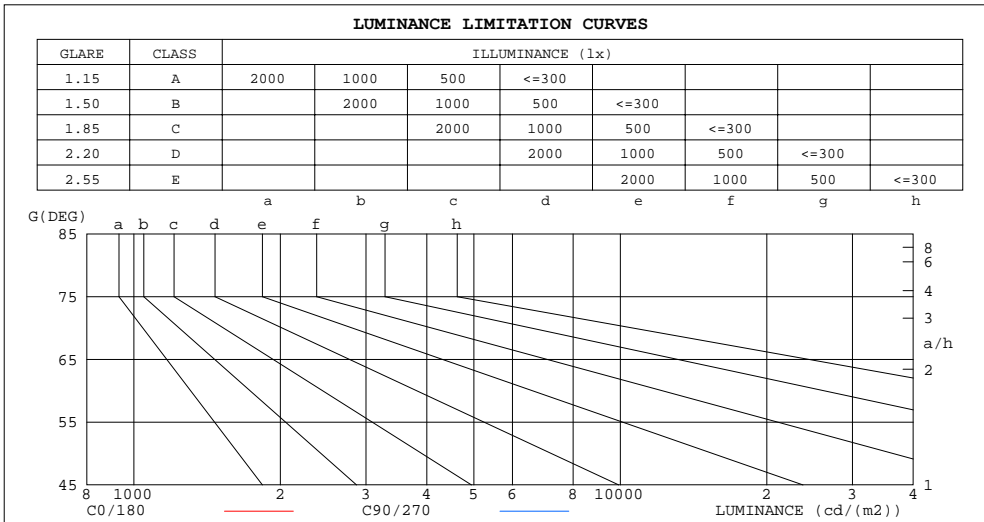
%lum = 37.3%
 %lamp = 37.3%

C Range: 0 - 360DEG
 C Interval: 22.5DEG
 Test Speed: 10.0deg/s
 Temperature:25.2DEG
 Operators:Monkey

γ Range: 0 - 180DEG
 γ Interval: 1.0DEG
 Test System:EVERFINE GO-R5000_V2 SYSTEM V2.0.351
 Humidity:45%
 Test Distance:2.447m [K=1.0000]
 Remarks:

LUMINANCE LIMITATION CURVES

Test:U:120.0V I:0.2606A P:30.60W PF:0.9783 Lamp Flux:2183.96x1 lm		
NAME: 4904BN-4	TYPE:N/A	WEIGHT:N/A
SPEC.:N/A	DIM.: N/A	SERIAL No.:N/A
MFR.:	SUR.:N/A	Shielding Angle:N/A



LUMINANCE cd/(m2)		
G(DEG)	C0/180	C90/270
85	7017361	20075691
80	4143572	10235520
75	3276626	6954113
70	2941310	5320346
65	2859335	4346920
60	2914204	3719669
55	2991694	3292503
50	3005780	3006975
45	2998636	2825044

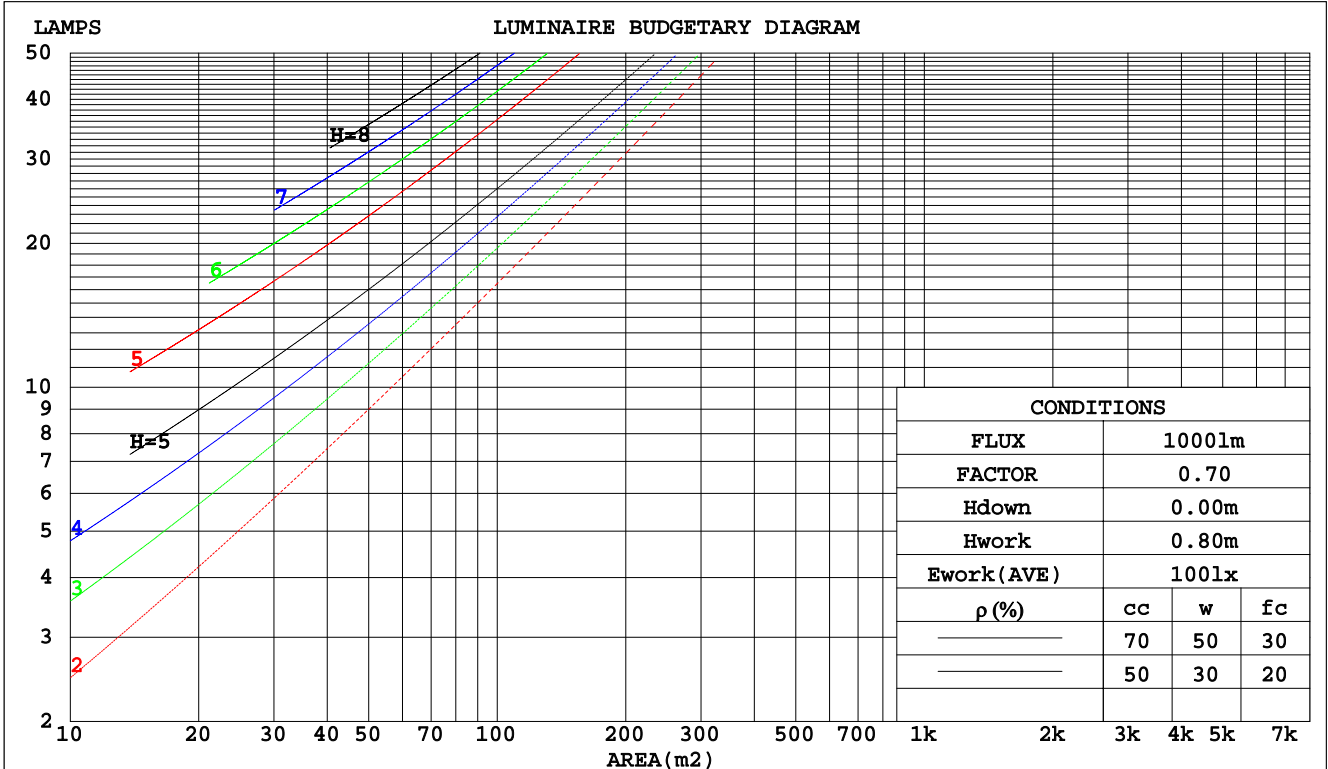
C Range: 0 - 360DEG
 C Interval: 22.5DEG
 Test Speed: 10.0deg/s
 Temperature:25.2DEG
 Operators:Monkey

γ Range: 0 - 180DEG
 γ Interval: 1.0DEG
 Test System:EVERFINE GO-R5000_V2 SYSTEM V2.0.351
 Humidity:45%
 Test Distance:2.447m [K=1.0000]
 Remarks:

CU AND LUMINAIRE BUDGETARY ESTIMATE DIAGRAM

Test:U:120.0V I:0.2606A P:30.60W PF:0.9783 Lamp Flux:2183.96x1 lm		
NAME:4904BN-4	TYPE:N/A	WEIGHT:N/A
SPEC.:N/A	DIM.: N/A	SERIAL No.:N/A
MFR.:	SUR.:N/A	Shielding Angle:N/A

pcc	80%			70%			50%			30%			10%			0
	50%	30%	10%	50%	30%	10%	50%	30%	10%	50%	30%	10%	50%	30%	10%	0
pw																0
pfc	20%			20%			20%			20%			20%			0
RCR	RCR:Room Cavity Ratio						Coefficients of Utilization(CU)									
0.0	1.10	1.10	1.10	1.03	1.03	1.03	.90	.90	.90	.78	.78	.78	.67	.67	.67	.62
1.0	.91	.86	.81	.85	.80	.76	.74	.70	.67	.63	.61	.58	.54	.52	.50	.45
2.0	.78	.70	.64	.73	.66	.60	.63	.58	.53	.54	.50	.46	.46	.43	.40	.35
3.0	.68	.59	.52	.63	.56	.49	.55	.49	.44	.47	.42	.38	.40	.36	.33	.29
4.0	.60	.51	.44	.56	.48	.41	.49	.42	.37	.42	.36	.32	.35	.31	.28	.24
5.0	.53	.44	.37	.50	.41	.35	.43	.37	.32	.37	.32	.28	.32	.28	.24	.21
6.0	.48	.39	.32	.45	.37	.31	.39	.32	.27	.34	.28	.24	.29	.25	.21	.18
7.0	.43	.34	.28	.40	.33	.27	.35	.29	.24	.31	.25	.21	.26	.22	.19	.16
8.0	.39	.31	.25	.37	.29	.24	.32	.26	.21	.28	.23	.19	.24	.20	.17	.15
9.0	.36	.28	.22	.34	.26	.21	.30	.24	.19	.26	.21	.17	.23	.18	.15	.13
10.0	.33	.25	.20	.31	.24	.19	.28	.22	.17	.24	.19	.16	.21	.17	.14	.12



C Range: 0 - 360DEG
 C Interval: 22.5DEG
 Test Speed: 10.0deg/s
 Temperature:25.2DEG
 Operators:Monkey

γ Range: 0 - 180DEG
 γ Interval: 1.0DEG
 Test System:EVERFINE GO-R5000_V2 SYSTEM V2.0.351
 Humidity:45%
 Test Distance:2.447m [K=1.0000]
 Remarks:

WEC AND CCEC

Test:U:120.0V I:0.2606A P:30.60W PF:0.9783 Lamp Flux:2183.96x1 lm		
NAME:4904BN-4	TYPE:N/A	WEIGHT:N/A
SPEC.:N/A	DIM.: N/A	SERIAL No.:N/A
MFR.:	SUR.:N/A	Shielding Angle:N/A

ρcc	80%			70%			50%			30%			10%			0
ρw	50%	30%	10%	50%	30%	10%	50%	30%	10%	50%	30%	10%	50%	30%	10%	0
ρfc	20%			20%			20%			20%			20%			0
RCR	RCR:Room Cavity Ratio						Wall Exitance Coefficients(WEC)									
0.0																
1.0	.383	.218	.069	.365	.208	.066	.330	.189	.060	.297	.172	.055	.268	.155	.050	
2.0	.324	.178	.055	.308	.169	.052	.276	.153	.048	.246	.138	.043	.219	.124	.039	
3.0	.285	.152	.046	.270	.145	.044	.241	.131	.040	.214	.117	.036	.189	.105	.032	
4.0	.256	.133	.039	.242	.126	.037	.215	.114	.034	.190	.102	.031	.168	.091	.028	
5.0	.232	.118	.034	.219	.112	.033	.195	.101	.030	.172	.091	.027	.151	.081	.024	
6.0	.212	.106	.030	.200	.101	.029	.178	.091	.027	.157	.082	.024	.138	.072	.021	
7.0	.196	.097	.027	.185	.092	.026	.164	.083	.024	.145	.074	.022	.127	.066	.019	
8.0	.181	.089	.025	.171	.084	.024	.152	.076	.022	.134	.068	.020	.117	.060	.018	
9.0	.169	.082	.023	.160	.078	.022	.142	.070	.020	.125	.063	.018	.109	.056	.016	
10.0	.158	.076	.021	.150	.072	.020	.133	.065	.018	.117	.058	.017	.103	.052	.015	

ρcc	80%			70%			50%			30%			10%			0
ρw	50%	30%	10%	50%	30%	10%	50%	30%	10%	50%	30%	10%	50%	30%	10%	0
ρfc	20%			20%			20%			20%			20%			0
RCR	RCR:Room Cavity Ratio						Ceiling Cavity Exitance Coefficients(CCEC)									
0.0	.478	.478	.478	.409	.409	.409	.279	.279	.279	.160	.160	.160	.051	.051	.051	
1.0	.476	.446	.419	.407	.383	.361	.278	.263	.249	.160	.152	.145	.051	.049	.047	
2.0	.469	.424	.386	.402	.365	.334	.275	.253	.233	.159	.147	.137	.051	.048	.044	
3.0	.461	.408	.366	.396	.352	.317	.272	.245	.223	.157	.143	.131	.050	.046	.043	
4.0	.454	.396	.353	.389	.342	.306	.268	.239	.216	.155	.140	.128	.050	.046	.042	
5.0	.446	.387	.343	.383	.335	.299	.264	.234	.211	.153	.137	.125	.049	.045	.041	
6.0	.439	.379	.336	.377	.328	.293	.260	.230	.207	.151	.135	.123	.049	.044	.041	
7.0	.432	.373	.331	.372	.323	.289	.257	.227	.205	.149	.134	.122	.048	.044	.040	
8.0	.426	.368	.328	.366	.319	.286	.254	.224	.203	.147	.132	.121	.048	.043	.040	
9.0	.420	.363	.325	.361	.315	.283	.250	.221	.201	.146	.131	.120	.047	.043	.040	
10.0	.414	.359	.322	.357	.312	.281	.248	.219	.200	.144	.130	.119	.047	.043	.040	

C Range: 0 - 360DEG
 C Interval: 22.5DEG
 Test Speed: 10.0deg/s
 Temperature:25.2DEG
 Operators:Monkey

γ Range: 0 - 180DEG
 γ Interval: 1.0DEG
 Test System:EVERFINE GO-R5000_V2 SYSTEM V2.0.351
 Humidity:45%
 Test Distance:2.447m [K=1.0000]
 Remarks:

UGR(Unified Glare Rating) Table

Test:U:120.0V I:0.2606A P:30.60W PF:0.9783 Lamp Flux:2183.96x1 lm										
NAME:4904BN-4					TYPE:N/A			WEIGHT:N/A		
SPEC.:N/A					DIM.: N/A			SERIAL No.:N/A		
MFR.:					SUR.:N/A			Shielding Angle:N/A		
ceiling/cavity	0.7	0.7	0.5	0.5	0.3	0.7	0.7	0.5	0.5	0.3
walls	0.5	0.3	0.5	0.3	0.3	0.5	0.3	0.5	0.3	0.3
working plane	0.2	0.2	0.2	0.2	0.2	0.2	0.2	0.2	0.2	0.2
Room dimensions	Viewed crosswise					Viewed endwise				
x = 2H y = 2H	38.0	39.1	38.7	39.9	40.8	38.3	39.4	39.0	40.2	41.1
3H	40.2	41.2	41.0	42.0	43.0	41.3	42.3	42.0	43.1	44.1
4H	41.3	42.3	42.1	43.1	44.1	43.0	44.0	43.8	44.8	45.8
6H	42.4	43.3	43.2	44.2	45.2	44.9	45.9	45.7	46.7	47.7
8H	43.0	43.9	43.8	44.7	45.7	46.0	46.9	46.8	47.7	48.8
12H	43.6	44.4	44.4	45.3	46.3	47.3	48.1	48.1	49.0	50.0
4H 2H	39.0	40.0	39.8	40.8	41.8	39.2	40.2	40.0	41.0	42.0
3H	41.7	42.6	42.6	43.4	44.5	42.4	43.3	43.2	44.1	45.1
4H	43.2	44.0	44.1	44.9	45.9	44.3	45.0	45.1	45.9	47.0
6H	44.7	45.4	45.6	46.3	47.4	46.4	47.1	47.2	47.9	49.0
8H	45.4	46.1	46.3	47.0	48.1	47.5	48.2	48.4	49.1	50.2
12H	46.1	46.7	47.0	47.6	48.7	48.9	49.5	49.8	50.4	51.5
8H 4H	44.2	44.9	45.1	45.8	46.9	45.0	45.6	45.8	46.5	47.6
6H	46.2	46.8	47.1	47.7	48.8	47.3	47.9	48.2	48.8	49.9
8H	47.3	47.8	48.2	48.7	49.9	48.7	49.2	49.6	50.1	51.3
12H	48.4	48.8	49.3	49.8	50.9	50.3	50.7	51.2	51.6	52.8
12H 4H	44.5	45.1	45.4	46.0	47.1	45.2	45.8	46.0	46.7	47.8
6H	46.7	47.2	47.6	48.1	49.3	47.7	48.2	48.6	49.1	50.2
8H	48.0	48.4	48.9	49.3	50.5	49.1	49.6	50.1	50.5	51.7
Variations with the observer position at spacings:										
S = 1.0H	+ 0.1 / - 0.1					+ 0.1 / - 0.1				
1.5H	+ 0.2 / - 0.3					+ 0.2 / - 0.3				
2.0H	+ 0.3 / - 0.5					+ 0.3 / - 0.4				

CIE Pub.117 Corrected 2184 lm Total Lamp Luminous Flux.(8log(F/F0) = 2.7)

C Range: 0 - 360DEG
 C Interval: 22.5DEG
 Test Speed: 10.0deg/s
 Temperature:25.2DEG
 Operators:Monkey

γ Range: 0 - 180DEG
 γ Interval: 1.0DEG
 Test System:EVERFINE GO-R5000_V2 SYSTEM V2.0.351
 Humidity:45%
 Test Distance:2.447m [K=1.0000]
 Remarks:

UTILIZATION FACTORS TABLE

Test:U:120.0V I:0.2606A P:30.60W PF:0.9783 Lamp Flux:2183.96x1 lm		
NAME:4904BN-4	TYPE:N/A	WEIGHT:N/A
SPEC.:N/A	DIM.: N/A	SERIAL No.:N/A
MFR.:	SUR.:N/A	Shielding Angle:N/A

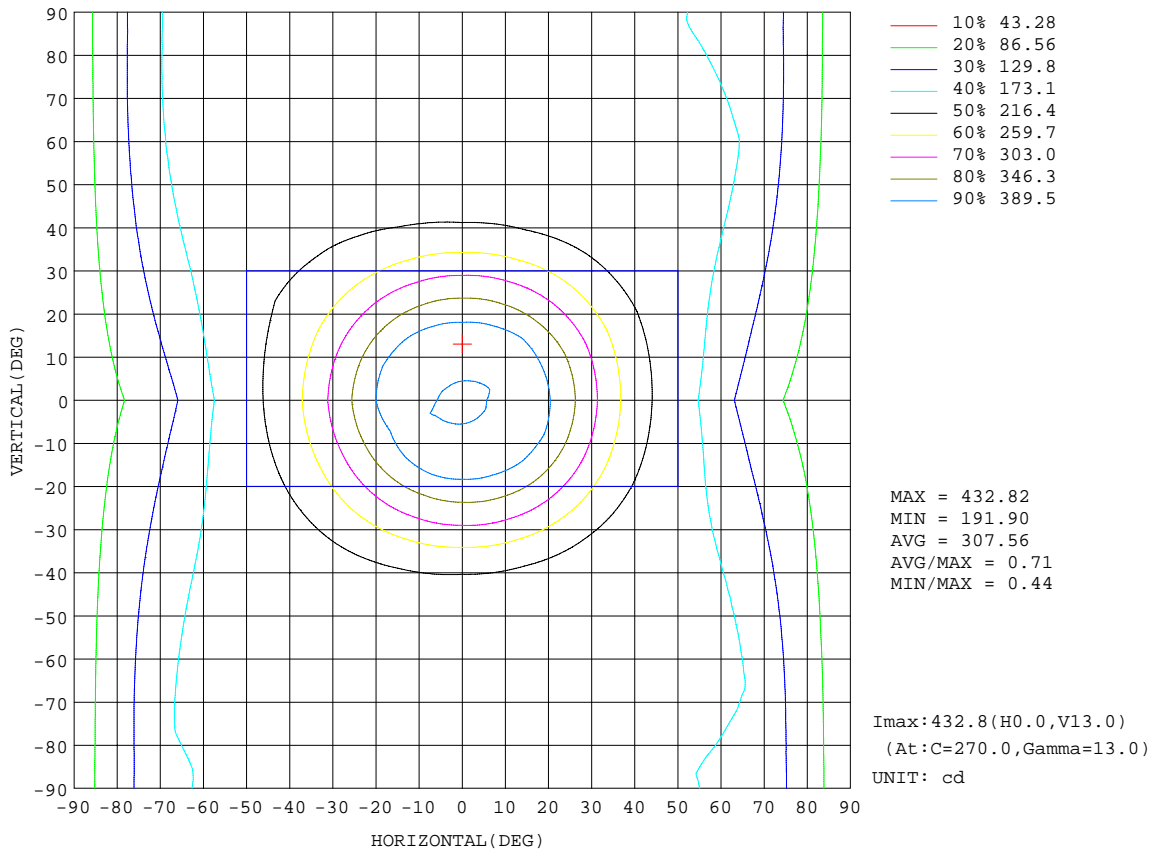
REFLECTANCE										
Ceiling	0.8	0.8	0.8	0.7	0.7	0.7	0.5	0.5	0.5	0
Walls	0.7	0.5	0.3	0.7	0.5	0.3	0.7	0.5	0.3	0
Working plane	0.2	0.2	0.2	0.2	0.2	0.2	0.2	0.2	0.2	0
ROOM INDEX	UTILIZATION FACTORS(PERCENT) $k(RI) \times RCR = 5$									
k = 0.60	43	31	24	42	30	24	39	29	23	16
0.80	52	39	31	50	38	30	45	35	29	20
1.00	59	46	37	56	44	36	51	43	34	24
1.25	66	52	44	62	50	42	56	46	39	28
1.50	71	58	49	67	55	47	60	50	44	30
2.00	78	66	57	73	63	55	65	57	50	35
2.50	82	71	63	77	68	60	68	61	55	38
3.00	86	76	68	81	72	65	71	64	59	40
4.00	91	82	75	85	78	71	75	69	64	44
5.00	94	87	80	88	82	76	77	72	68	46
ROOM INDEX	UF(total)									Direct
According to DIN EN 13032-2 2004			Suspended				SHRNOM = 1.25			

C Range: 0 - 360DEG
 C Interval: 22.5DEG
 Test Speed: 10.0deg/s
 Temperature:25.2DEG
 Operators:Monkey

γ Range: 0 - 180DEG
 γ Interval: 1.0DEG
 Test System:EVERFINE GO-R5000_V2 SYSTEM V2.0.351
 Humidity:45%
 Test Distance:2.447m [K=1.0000]
 Remarks:

ISOCANDELA DIAGRAM

Test:U:120.0V I:0.2606A P:30.60W PF:0.9783 Lamp Flux:2183.96x1 lm		
NAME:4904BN-4	TYPE:N/A	WEIGHT:N/A
SPEC.:N/A	DIM.: N/A	SERIAL No.:N/A
MFR.:	SUR.:N/A	Shielding Angle:N/A

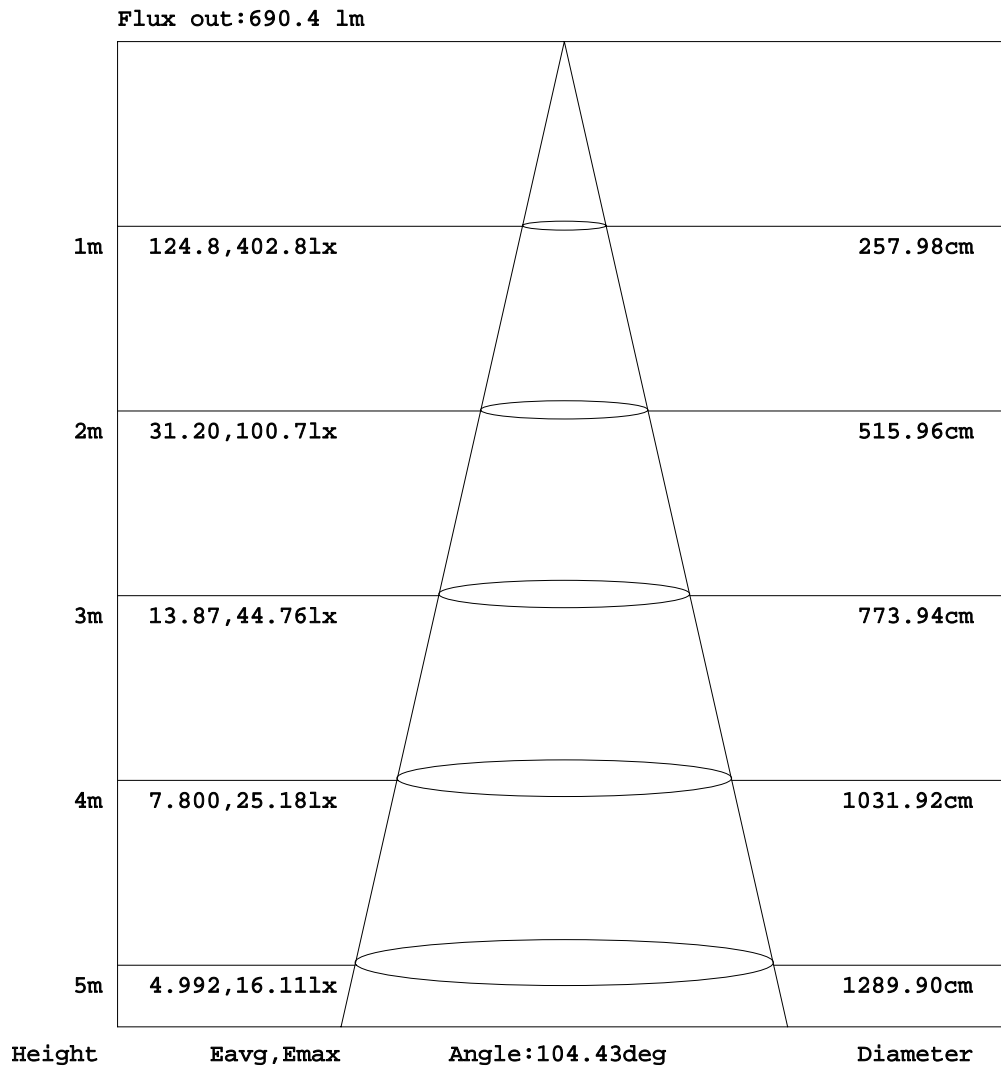


C Range: 0 - 360DEG
 C Interval: 22.5DEG
 Test Speed: 10.0deg/s
 Temperature: 25.2DEG
 Operators: Monkey

γ Range: 0 - 180DEG
 γ Interval: 1.0DEG
 Test System: EVERFINE GO-R5000_V2 SYSTEM V2.0.351
 Humidity: 45%
 Test Distance: 2.447m [K=1.0000]
 Remarks:

AAI Figure

Test:U:120.0V I:0.2606A P:30.60W PF:0.9783 Lamp Flux:2183.96x1 lm		
NAME: 4904BN-4	TYPE:N/A	WEIGHT:N/A
SPEC.:N/A	DIM.: N/A	SERIAL No.:N/A
MFR.:	SUR.:N/A	Shielding Angle:N/A



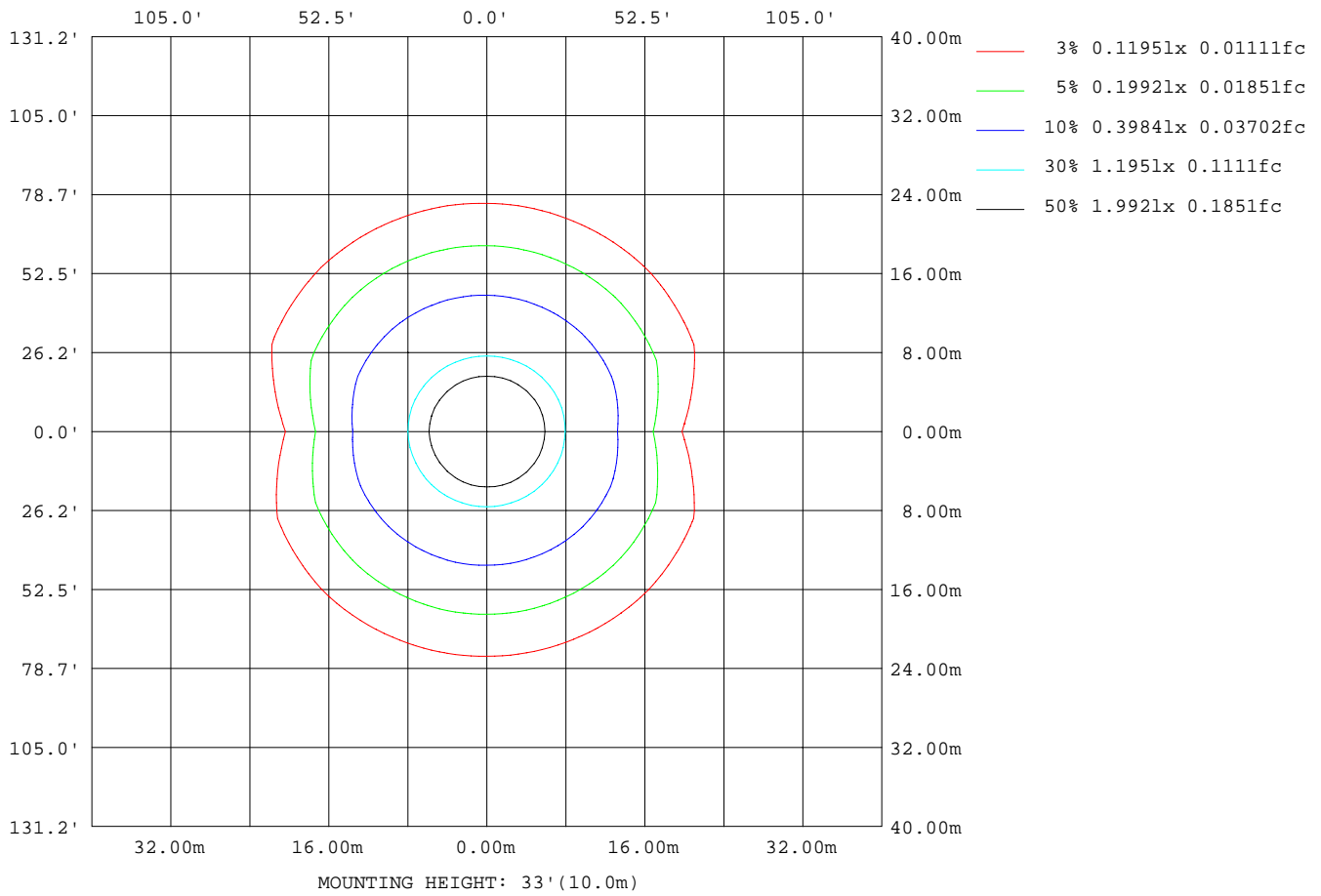
Note:The Curves indicate the illuminated area and the average illumination when the luminaire is at different distance.

C Range: 0 - 360DEG
 C Interval: 22.5DEG
 Test Speed: 10.0deg/s
 Temperature:25.2DEG
 Operators:Monkey

γ Range: 0 - 180DEG
 γ Interval: 1.0DEG
 Test System:EVERFINE GO-R5000_V2 SYSTEM V2.0.351
 Humidity:45%
 Test Distance:2.447m [K=1.0000]
 Remarks:

ISOLUX DIAGRAM

Test:U:120.0V I:0.2606A P:30.60W PF:0.9783 Lamp Flux:2183.96x1 lm		
NAME: 4904BN-4	TYPE:N/A	WEIGHT:N/A
SPEC.:N/A	DIM.: N/A	SERIAL No.:N/A
MFR.:	SUR.:N/A	Shielding Angle:N/A



C Range: 0 - 360DEG
 C Interval: 22.5DEG
 Test Speed: 10.0deg/s
 Temperature:25.2DEG
 Operators:Monkey

γ Range: 0 - 180DEG
 γ Interval: 1.0DEG
 Test System:EVERFINE GO-R5000_V2 SYSTEM V2.0.351
 Humidity:45%
 Test Distance:2.447m [K=1.0000]
 Remarks:

LED Avg.L Report

Test:U:120.0V I:0.2606A P:30.60W PF:0.9783 Lamp Flux:2183.96x1 lm		
NAME:4904BN-4	TYPE:N/A	WEIGHT:N/A
SPEC.:N/A	DIM.: N/A	SERIAL No.:N/A
MFR.:	SUR.:N/A	Shielding Angle:N/A

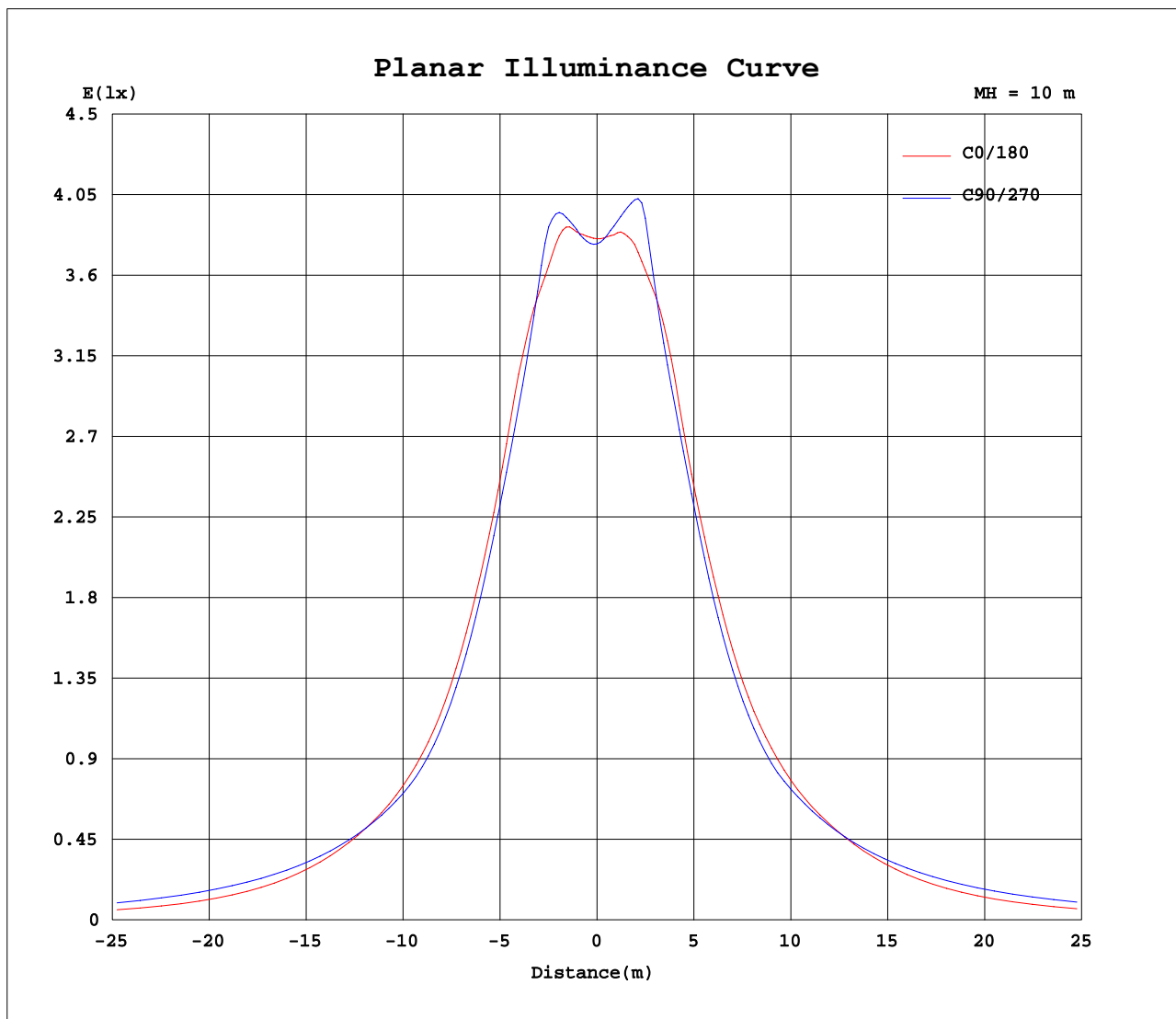
AvgL	cd/m2
L_0~180 (65) av	3002220
L_0~180 (75) av	3466375
L_0~180 (85) av	7520140
L_90~270 (65) av	4445424
L_90~270 (75) av	7109316
L_90~270 (85) av	20512062
L_45 (65) av	4573112
L_45 (75) av	7314570
L_45 (85) av	21083586

Standard: GB/T 29293-2012

C Range: 0 - 360DEG
 C Interval: 22.5DEG
 Test Speed: 10.0deg/s
 Temperature:25.2DEG
 Operators:Monkey

γ Range: 0 - 180DEG
 γ Interval: 1.0DEG
 Test System:EVERFINE GO-R5000_V2 SYSTEM V2.0.351
 Humidity:45%
 Test Distance:2.447m [K=1.0000]
 Remarks:

Planar Illuminance Curve



C Range: 0 - 360DEG
C Interval: 22.5DEG
Test Speed: 10.0deg/s
Temperature: 25.2DEG
Operators: Monkey

γ Range: 0 - 180DEG
 γ Interval: 1.0DEG
Test System: EVERFINE GO-R5000_V2 SYSTEM V2.0.351
Humidity: 45%
Test Distance: 2.447m [K=1.0000]
Remarks:

LUMINOUS DISTRIBUTION INTENSITY DATA

Test:U:120.0V I:0.2606A P:30.60W PF:0.9783 Lamp Flux:2183.96x1 lm		
NAME: 4904BN-4	TYPE:N/A	WEIGHT:N/A
SPEC.:N/A	DIM.: N/A	SERIAL No.:N/A
MFR.:	SUR.:N/A	Shielding Angle:N/A

Table--1 UNIT: cd

C (DEG) \ γ (DEG)	0	22.5	45	67.5	90	112.5	135	157.5	180	202.5	225	247.5	270	292.5	315	337.5			
0	378	378	378	378	378	378	378	378	378	378	378	378	378	378	378	378			
5	385	386	386	388	388	387	385	384	385	388	391	393	393	391	388	386			
10	401	406	411	413	413	407	399	395	395	401	410	419	420	416	409	402			
15	396	402	413	424	420	410	400	395	395	400	409	419	420	418	406	398			
20	389	390	386	378	376	377	383	385	387	388	382	376	374	379	390	391			
25	355	352	345	340	337	337	341	346	349	346	341	337	336	340	347	356			
30	312	310	303	298	295	296	301	306	310	307	302	296	294	298	307	315			
35	272	269	261	256	253	256	262	268	273	270	263	257	254	258	267	275			
40	236	232	226	220	219	223	231	237	242	241	233	226	223	225	233	239			
45	211	209	205	201	200	204	211	217	219	222	216	211	207	207	211	216			
50	192	199	197	194	194	197	202	207	204	214	210	205	201	200	202	203			
55	171	193	192	190	189	192	198	201	184	208	206	201	197	196	198	197			
60	145	187	189	187	186	189	195	195	159	204	203	198	194	193	194	191			
65	120	183	187	185	184	187	193	190	134	201	202	196	192	190	192	185			
70	100	179	185	183	182	185	191	185	112	198	200	194	190	188	190	181			
75	84.3	176	183	181	180	183	189	181	95.1	195	198	192	188	186	187	176			
80	71.5	173	181	179	178	181	187	177	81.7	191	195	190	185	183	185	172			
85	60.8	169	178	176	175	178	184	174	70.3	187	192	187	182	180	181	167			
90	55.7	168	177	175	174	177	182	172	63.4	183	190	184	180	178	179	164			
95	58.5	169	177	175	175	177	183	174	64.7	180	188	184	180	178	177	162			
100	68.8	171	177	175	174	177	182	176	72.9	174	185	182	179	176	174	157			
105	78.5	171	175	173	173	175	180	176	82.5	165	179	179	176	173	168	150			
110	82.3	169	171	170	169	172	176	174	86.7	155	171	173	171	167	159	141			
115	92.3	164	166	165	165	167	171	169	98.3	144	161	166	165	160	149	131			
120	99.8	157	159	158	158	160	163	162	108	134	149	157	157	151	138	121			
125	101	148	151	151	151	153	155	153	107	124	138	147	148	142	126	113			
130	95.5	137	141	142	143	144	146	142	102	116	125	137	138	131	115	106			
135	90.1	124	131	133	133	135	135	129	95.8	104	113	125	127	119	104	97.3			
140	84.1	110	119	123	123	124	123	114	89.2	90.2	101	113	115	108	93.3	86.9			
145	76.7	95.8	108	111	112	112	110	98.3	81.9	80.0	89.6	100	103	97.5	85.1	76.4			
150	71.5	83.0	95.2	98.5	99.3	99.8	96.4	83.2	71.7	71.0	76.1	87.1	91.4	87.4	77.0	68.5			
155	63.5	71.3	81.6	86.0	86.6	87.0	81.3	68.2	64.3	63.4	64.8	73.8	79.1	77.2	69.2	63.7			
160	50.6	60.2	67.3	72.4	73.3	73.3	66.3	51.5	50.4	52.0	55.4	61.3	66.1	66.1	61.2	58.6			
165	36.3	47.7	55.7	58.7	60.0	59.2	50.2	34.6	34.7	34.8	38.8	52.1	54.4	54.5	53.4	52.7			
170	26.0	31.9	45.2	48.8	49.5	47.5	29.8	25.4	24.1	24.2	25.7	30.2	46.4	47.7	46.9	45.1			
175	23.3	22.0	24.5	33.3	35.6	22.1	25.8	27.0	24.6	24.2	25.1	21.6	23.1	35.9	33.9	26.8			
180	28.8	26.4	22.3	21.4	0.70	24.5	22.1	27.2	28.7	28.7	27.4	24.4	21.2	8.74	21.3	24.7			

C Range: 0 - 360DEG
 C Interval: 22.5DEG
 Test Speed: 10.0deg/s
 Temperature:25.2DEG
 Operators:Monkey

γ Range: 0 - 180DEG
 γ Interval: 1.0DEG
 Test System:EVERFINE GO-R5000_V2 SYSTEM V2.0.351
 Humidity:45%
 Test Distance:2.447m [K=1.0000]
 Remarks: