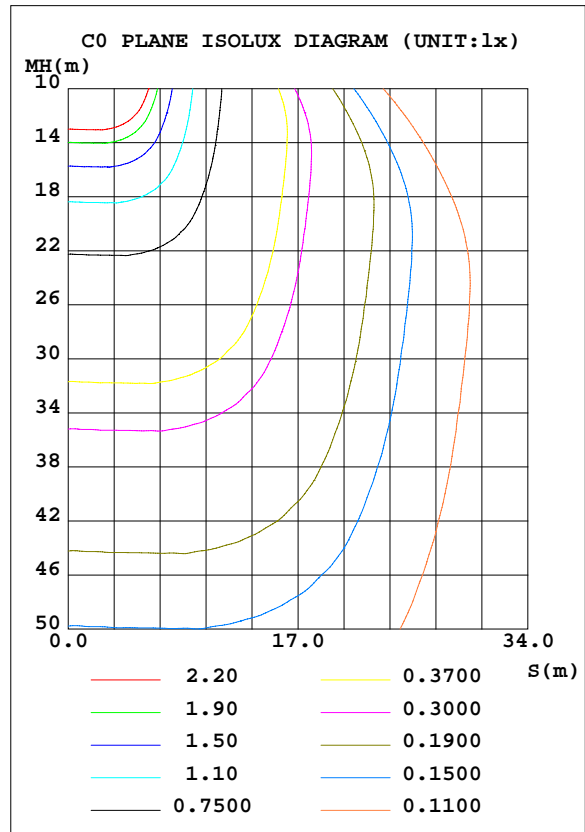
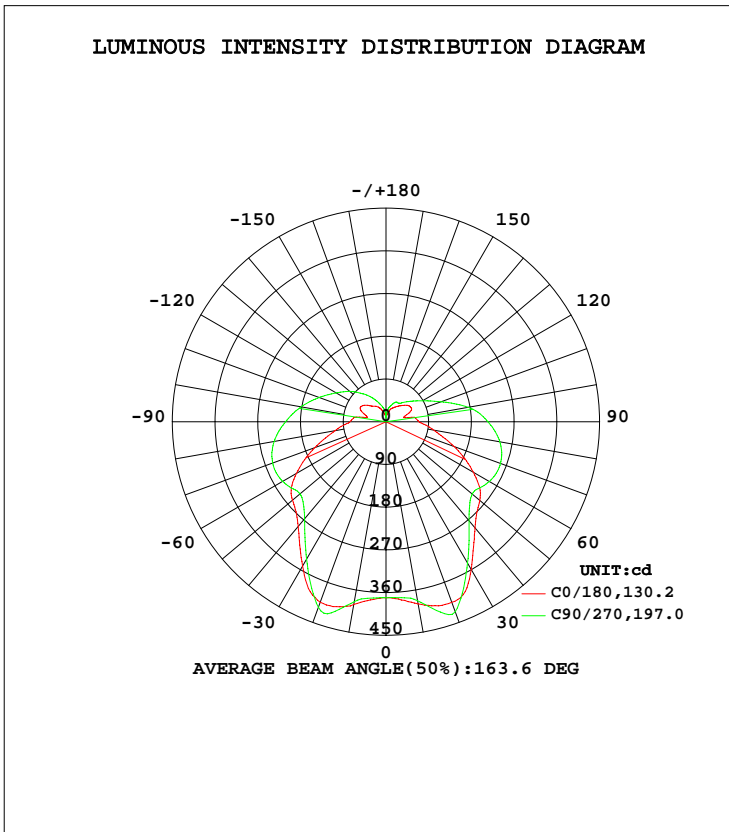


LUMINAIRE PHOTOMETRIC TEST REPORT

Test:U:120.0V I:0.2611A P:30.79W PF:0.9829 Lamp Flux:2363.47x1 lm		
NAME:4902BN-4	TYPE:N/A	WEIGHT:N/A
SPEC.:N/A	DIM.: N/A	SERIAL No.:N/A
MFR.:	SUR.:N/A	Shielding Angle:N/A

DATA OF LAMP		PHOTOMETRIC DATA			
MODEL	PSZ2C170912003-10	Imax(cd)	439.0	S/MH(C0/180)	1.36
NOMINAL POWER(W)	30	LOR(%)	100.0	S/MH(C90/270)	1.32
RATED VOLTAGE(V)	12	TOTAL FLUX(lm)	2363.5	η UP, DN(C0-180)	15.3, 35.5
NOMINAL FLUX(lm)	2363.47	CIE CLASS	SEMI-D.	η UP, DN(C180-360)	13.4, 35.7
LAMPS INSIDE	1	η up(%)	28.8	CIBSE SHR NOM	1.50
TEST VOLTAGE(V)	120	η down(%)	71.2	CIBSE SHR MAX	1.55



C Range: 0 - 360DEG
 C Interval: 22.5DEG
 Test Speed: 10.0deg/s
 Temperature:25.2DEG
 Operators:Monkey

γ Range: 0 - 180DEG
 γ Interval: 1.0DEG
 Test System:EVERFINE GO-R5000_V2 SYSTEM V2.0.351
 Humidity:45%
 Test Distance:2.447m [K=1.0000]
 Remarks:

ZONAL FLUX DIAGRAM

ZONAL FLUX DIAGRAM:

γ	C0	C45	C90	C135	C180	C225	C270	C315	γ	Φ zone	Φ total	%lum,lamp
10	390.7	385.6	384.8	384.6	389.8	384.7	382.9	382.6	0- 10	36.09	36.09	1.53,1.53
20	404.8	427.5	416.1	427.8	404.7	424.4	426.3	426.5	10- 20	115.3	151.4	6.41,6.41
30	351.7	398.8	334.8	402.4	359.5	413.6	343.6	406.2	20- 30	185.7	337.1	14.3,14.3
40	287.4	321.2	266.9	322.3	291.9	329.7	272.4	327.0	30- 40	209.4	546.6	23.1,23.1
50	257.0	260.3	236.7	260.7	257.9	265.1	237.2	263.5	40- 50	211.7	758.3	32.1,32.1
60	217.7	245.8	251.2	240.8	212.5	243.1	251.7	245.0	50- 60	221.1	979.4	41.4,41.4
70	159.5	250.3	254.1	244.7	152.6	247.3	256.8	251.2	60- 70	238.1	1217	51.5,51.5
80	109.4	239.8	239.2	235.2	102.3	238.8	243.6	242.6	70- 80	240.6	1458	61.7,61.7
90	76.05	217.1	211.6	213.8	69.61	215.6	214.8	218.6	80- 90	225.2	1683	71.2,71.2
100	56.74	191.3	181.4	189.3	55.30	175.4	176.3	178.1	90-100	196.0	1879	79.5,79.5
110	49.84	162.0	149.8	160.8	48.85	129.4	123.2	132.9	100-110	153.6	2033	86,86
120	62.14	133.9	121.8	132.8	60.52	95.88	88.88	101.9	110-120	118.2	2151	91,91
130	54.52	105.5	99.66	105.3	54.25	79.53	67.28	81.60	120-130	86.96	2238	94.7,94.7
140	42.72	80.63	77.40	80.16	43.68	68.38	52.39	68.78	130-140	58.58	2297	97.2,97.2
150	36.86	58.04	58.63	57.41	35.26	52.62	47.49	54.48	140-150	36.55	2333	98.7,98.7
160	27.16	38.91	41.29	38.73	28.14	30.80	39.26	39.16	150-160	19.96	2353	99.6,99.6
170	17.14	26.57	28.10	20.31	17.75	17.34	28.10	28.01	160-170	8.432	2362	99.9,99.9
180	14.87	12.70	3.639	12.93	16.80	16.02	11.56	12.39	170-180	1.840	2363	100,100
DEG	LUMINOUS INTENSITY:cd Less than 25% Percent = 41.0 %									UNIT:lm		

Conical surface Flux(90deg): 652.23 lm

%lum = 27.6%
 %lamp = 27.6%

Conical surface Flux(120deg): 979.41 lm

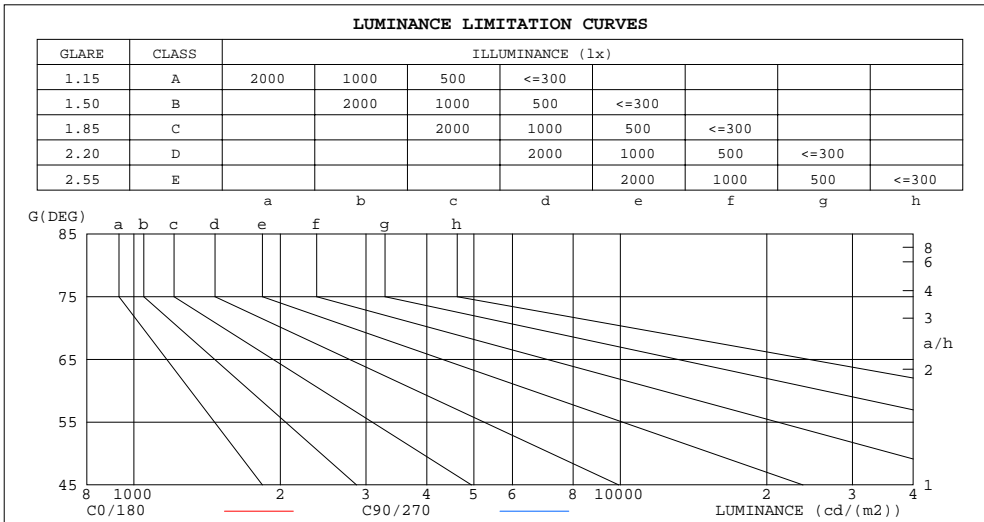
%lum = 41.4%
 %lamp = 41.4%

C Range: 0 - 360DEG
 C Interval: 22.5DEG
 Test Speed: 10.0deg/s
 Temperature:25.2DEG
 Operators:Monkey

γ Range: 0 - 180DEG
 γ Interval: 1.0DEG
 Test System:EVERFINE GO-R5000_V2 SYSTEM V2.0.351
 Humidity:45%
 Test Distance:2.447m [K=1.0000]
 Remarks:

LUMINANCE LIMITATION CURVES

Test:U:120.0V I:0.2611A P:30.79W PF:0.9829 Lamp Flux:2363.47x1 lm		
NAME:4902BN-4	TYPE:N/A	WEIGHT:N/A
SPEC.:N/A	DIM.: N/A	SERIAL No.:N/A
MFR.:	SUR.:N/A	Shielding Angle:N/A



LUMINANCE cd/(m2)		
G (DEG)	C0/180	C90/270
85	10462658	25978098
80	6312573	13764036
75	5104642	9607932
70	4672968	7425222
65	4483527	6033884
60	4363942	5020092
55	4257124	4239401
50	4007560	3679248
45	3804031	3477736

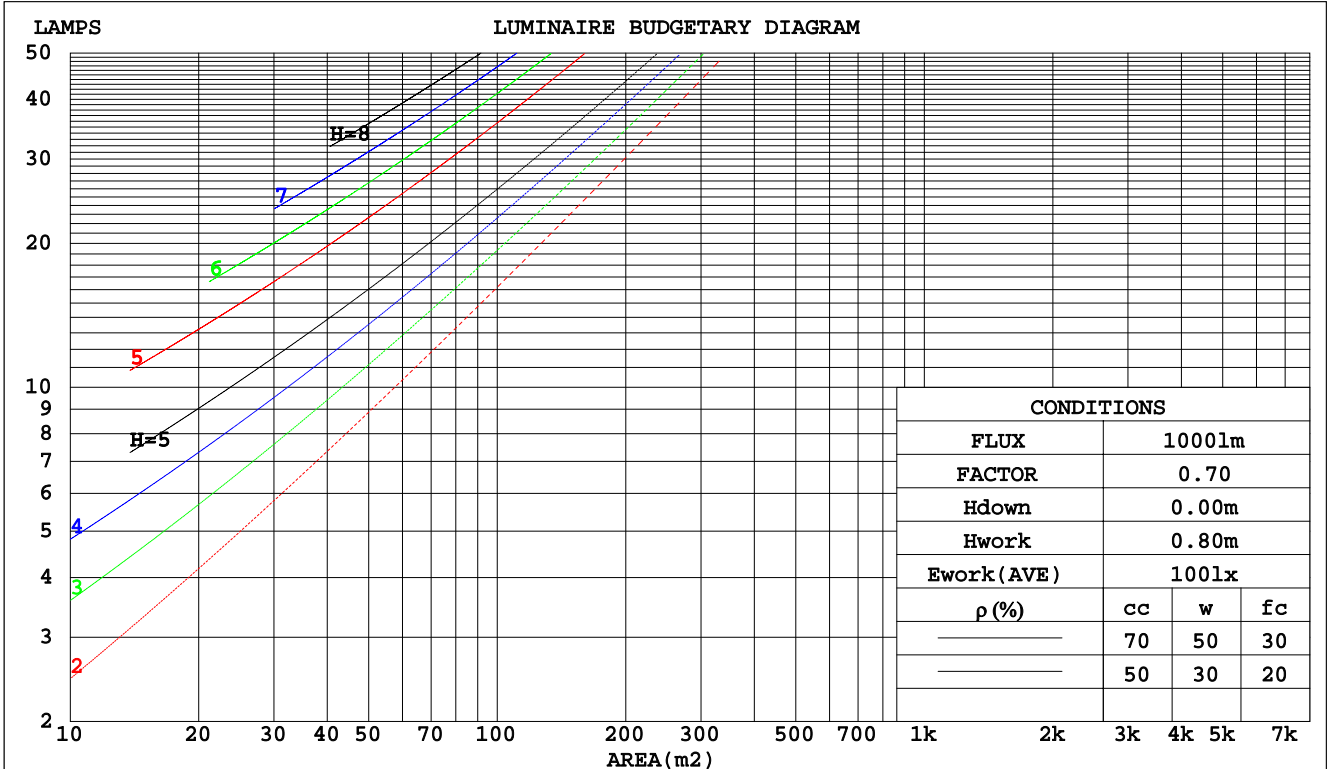
C Range: 0 - 360DEG
 C Interval: 22.5DEG
 Test Speed: 10.0deg/s
 Temperature:25.2DEG
 Operators:Monkey

γ Range: 0 - 180DEG
 γ Interval: 1.0DEG
 Test System:EVERFINE GO-R5000_V2 SYSTEM V2.0.351
 Humidity:45%
 Test Distance:2.447m [K=1.0000]
 Remarks:

CU AND LUMINAIRE BUDGETARY ESTIMATE DIAGRAM

Test:U:120.0V I:0.2611A P:30.79W PF:0.9829 Lamp Flux:2363.47x1 lm		
NAME:4902BN-4	TYPE:N/A	WEIGHT:N/A
SPEC.:N/A	DIM.: N/A	SERIAL No.:N/A
MFR.:	SUR.:N/A	Shielding Angle:N/A

pcc	80%			70%			50%			30%			10%			0
	50%	30%	10%	50%	30%	10%	50%	30%	10%	50%	30%	10%	50%	30%	10%	0
pw																
pfc	20%			20%			20%			20%			20%			0
RCR	RCR:Room Cavity Ratio															
	Coefficients of Utilization(CU)															
0.0	1.12	1.12	1.12	1.06	1.06	1.06	.95	.95	.95	.85	.85	.85	.76	.76	.76	.71
1.0	.92	.86	.81	.87	.82	.77	.77	.73	.69	.68	.65	.62	.60	.58	.55	.51
2.0	.78	.70	.63	.74	.66	.60	.65	.60	.54	.58	.53	.49	.51	.47	.44	.40
3.0	.68	.58	.51	.64	.56	.49	.57	.50	.44	.50	.45	.40	.44	.39	.36	.32
4.0	.59	.50	.43	.56	.47	.41	.50	.43	.37	.44	.38	.33	.39	.34	.30	.27
5.0	.53	.43	.36	.50	.41	.35	.44	.37	.32	.39	.33	.29	.35	.30	.26	.23
6.0	.47	.38	.31	.45	.36	.30	.40	.33	.27	.35	.29	.25	.31	.26	.22	.20
7.0	.43	.34	.27	.40	.32	.26	.36	.29	.24	.32	.26	.22	.29	.24	.20	.17
8.0	.39	.30	.24	.37	.29	.23	.33	.26	.21	.30	.24	.19	.26	.21	.18	.15
9.0	.35	.27	.21	.34	.26	.21	.30	.24	.19	.27	.21	.17	.24	.19	.16	.14
10.0	.32	.24	.19	.31	.23	.18	.28	.22	.17	.25	.20	.16	.23	.18	.14	.12



C Range: 0 - 360DEG
 C Interval: 22.5DEG
 Test Speed: 10.0deg/s
 Temperature:25.2DEG
 Operators:Monkey

γ Range: 0 - 180DEG
 γ Interval: 1.0DEG
 Test System:EVERFINE GO-R5000_V2 SYSTEM V2.0.351
 Humidity:45%
 Test Distance:2.447m [K=1.0000]
 Remarks:

WEC AND CCEC

Test:U:120.0V I:0.2611A P:30.79W PF:0.9829 Lamp Flux:2363.47x1 lm		
NAME:4902BN-4	TYPE:N/A	WEIGHT:N/A
SPEC.:N/A	DIM.: N/A	SERIAL No.:N/A
MFR.:	SUR.:N/A	Shielding Angle:N/A

ρcc	80%			70%			50%			30%			10%			0
ρw	50%	30%	10%	50%	30%	10%	50%	30%	10%	50%	30%	10%	50%	30%	10%	0
ρfc	20%			20%			20%			20%			20%			0
RCR	RCR:Room Cavity Ratio						Wall Exitance Coefficients(WEC)									
0.0																
1.0	.408	.232	.074	.392	.224	.071	.362	.208	.066	.335	.193	.062	.309	.179	.058	
2.0	.343	.188	.058	.329	.181	.056	.302	.168	.052	.276	.155	.049	.253	.143	.045	
3.0	.300	.160	.048	.287	.154	.046	.263	.142	.043	.240	.131	.040	.218	.121	.037	
4.0	.268	.139	.041	.256	.134	.040	.233	.124	.037	.212	.114	.034	.193	.105	.032	
5.0	.242	.123	.036	.231	.119	.035	.211	.110	.032	.191	.101	.030	.173	.093	.028	
6.0	.221	.111	.032	.211	.107	.031	.192	.098	.029	.174	.091	.027	.158	.083	.025	
7.0	.203	.100	.028	.194	.097	.028	.177	.089	.026	.160	.082	.024	.145	.075	.022	
8.0	.188	.092	.026	.180	.088	.025	.164	.082	.023	.148	.075	.022	.134	.069	.020	
9.0	.175	.085	.024	.167	.081	.023	.152	.075	.021	.138	.069	.020	.125	.064	.018	
10.0	.164	.078	.022	.156	.076	.021	.143	.070	.020	.129	.064	.018	.117	.059	.017	

ρcc	80%			70%			50%			30%			10%			0
ρw	50%	30%	10%	50%	30%	10%	50%	30%	10%	50%	30%	10%	50%	30%	10%	0
ρfc	20%			20%			20%			20%			20%			0
RCR	RCR:Room Cavity Ratio						Ceiling Cavity Exitance Coefficients(CCEC)									
0.0	.410	.410	.410	.350	.350	.350	.239	.239	.239	.137	.137	.137	.044	.044	.044	
1.0	.408	.376	.348	.349	.323	.299	.239	.222	.207	.138	.129	.120	.044	.041	.039	
2.0	.402	.354	.314	.344	.305	.272	.236	.211	.190	.136	.123	.111	.044	.040	.036	
3.0	.394	.338	.294	.338	.292	.255	.232	.203	.179	.134	.118	.105	.043	.038	.034	
4.0	.386	.326	.280	.331	.282	.243	.228	.196	.171	.132	.115	.101	.042	.037	.033	
5.0	.378	.317	.271	.325	.274	.236	.224	.191	.166	.130	.112	.099	.042	.037	.033	
6.0	.371	.309	.264	.319	.267	.230	.220	.187	.163	.128	.110	.097	.041	.036	.032	
7.0	.364	.302	.259	.313	.262	.226	.216	.184	.160	.126	.108	.095	.041	.035	.032	
8.0	.357	.297	.256	.307	.258	.223	.213	.181	.158	.124	.107	.094	.040	.035	.031	
9.0	.351	.292	.253	.302	.254	.220	.209	.178	.156	.122	.105	.093	.040	.035	.031	
10.0	.345	.288	.250	.297	.250	.218	.206	.176	.155	.120	.104	.093	.039	.034	.031	

C Range: 0 - 360DEG
 C Interval: 22.5DEG
 Test Speed: 10.0deg/s
 Temperature:25.2DEG
 Operators:Monkey

γ Range: 0 - 180DEG
 γ Interval: 1.0DEG
 Test System:EVERFINE GO-R5000_V2 SYSTEM V2.0.351
 Humidity:45%
 Test Distance:2.447m [K=1.0000]
 Remarks:

UGR(Unified Glare Rating) Table

Test:U:120.0V I:0.2611A P:30.79W PF:0.9829 Lamp Flux:2363.47x1 lm										
NAME:4902BN-4					TYPE:N/A			WEIGHT:N/A		
SPEC.:N/A					DIM.: N/A			SERIAL No.:N/A		
MFR.:					SUR.:N/A			Shielding Angle:N/A		
ceiling/cavity	0.7	0.7	0.5	0.5	0.3	0.7	0.7	0.5	0.5	0.3
walls	0.5	0.3	0.5	0.3	0.3	0.5	0.3	0.5	0.3	0.3
working plane	0.2	0.2	0.2	0.2	0.2	0.2	0.2	0.2	0.2	0.2
Room dimensions	Viewed crosswise					Viewed endwise				
x = 2H y = 2H	39.9	41.2	40.5	41.8	42.6	40.1	41.4	40.8	42.1	42.8
3H	42.3	43.5	43.0	44.1	45.0	43.4	44.5	44.0	45.2	46.0
4H	43.5	44.6	44.1	45.3	46.1	45.1	46.2	45.8	46.9	47.8
6H	44.6	45.7	45.3	46.4	47.2	47.1	48.1	47.8	48.8	49.7
8H	45.2	46.2	45.9	46.9	47.8	48.1	49.1	48.8	49.8	50.7
12H	45.8	46.8	46.5	47.5	48.4	49.2	50.2	50.0	51.0	51.8
4H 2H	40.9	42.1	41.6	42.8	43.6	41.1	42.2	41.8	42.9	43.8
3H	43.7	44.7	44.5	45.4	46.3	44.5	45.5	45.2	46.2	47.1
4H	45.2	46.1	46.0	46.9	47.8	46.4	47.3	47.2	48.1	49.0
6H	46.7	47.5	47.5	48.3	49.2	48.5	49.3	49.3	50.1	51.0
8H	47.4	48.2	48.2	48.9	49.9	49.6	50.4	50.4	51.2	52.1
12H	48.1	48.8	48.9	49.6	50.6	50.9	51.6	51.7	52.4	53.4
8H 4H	46.2	47.0	47.0	47.8	48.7	47.1	47.9	47.9	48.7	49.6
6H	48.2	48.8	49.0	49.6	50.6	49.5	50.1	50.3	50.9	51.9
8H	49.2	49.8	50.0	50.6	51.6	50.8	51.4	51.6	52.2	53.2
12H	50.3	50.8	51.1	51.6	52.6	52.3	52.8	53.1	53.6	54.7
12H 4H	46.5	47.2	47.3	48.0	49.0	47.3	48.0	48.1	48.8	49.8
6H	48.6	49.2	49.4	50.0	51.0	49.8	50.3	50.6	51.2	52.2
8H	49.8	50.3	50.7	51.2	52.2	51.2	51.7	52.0	52.6	53.6
Variations with the observer position at spacings:										
S = 1.0H	+ 0.1 / - 0.1					+ 0.1 / - 0.1				
1.5H	+ 0.2 / - 0.3					+ 0.2 / - 0.3				
2.0H	+ 0.3 / - 0.5					+ 0.3 / - 0.4				

CIE Pub.117 Corrected 2363 lm Total Lamp Luminous Flux.(8log(F/F0) = 3.0)

C Range: 0 - 360DEG
 C Interval: 22.5DEG
 Test Speed: 10.0deg/s
 Temperature:25.2DEG
 Operators:Monkey

γ Range: 0 - 180DEG
 γ Interval: 1.0DEG
 Test System:EVERFINE GO-R5000_V2 SYSTEM V2.0.351
 Humidity:45%
 Test Distance:2.447m [K=1.0000]
 Remarks:

UTILIZATION FACTORS TABLE

Test:U:120.0V I:0.2611A P:30.79W PF:0.9829 Lamp Flux:2363.47x1 lm		
NAME:4902BN-4	TYPE:N/A	WEIGHT:N/A
SPEC.:N/A	DIM.: N/A	SERIAL No.:N/A
MFR.:	SUR.:N/A	Shielding Angle:N/A

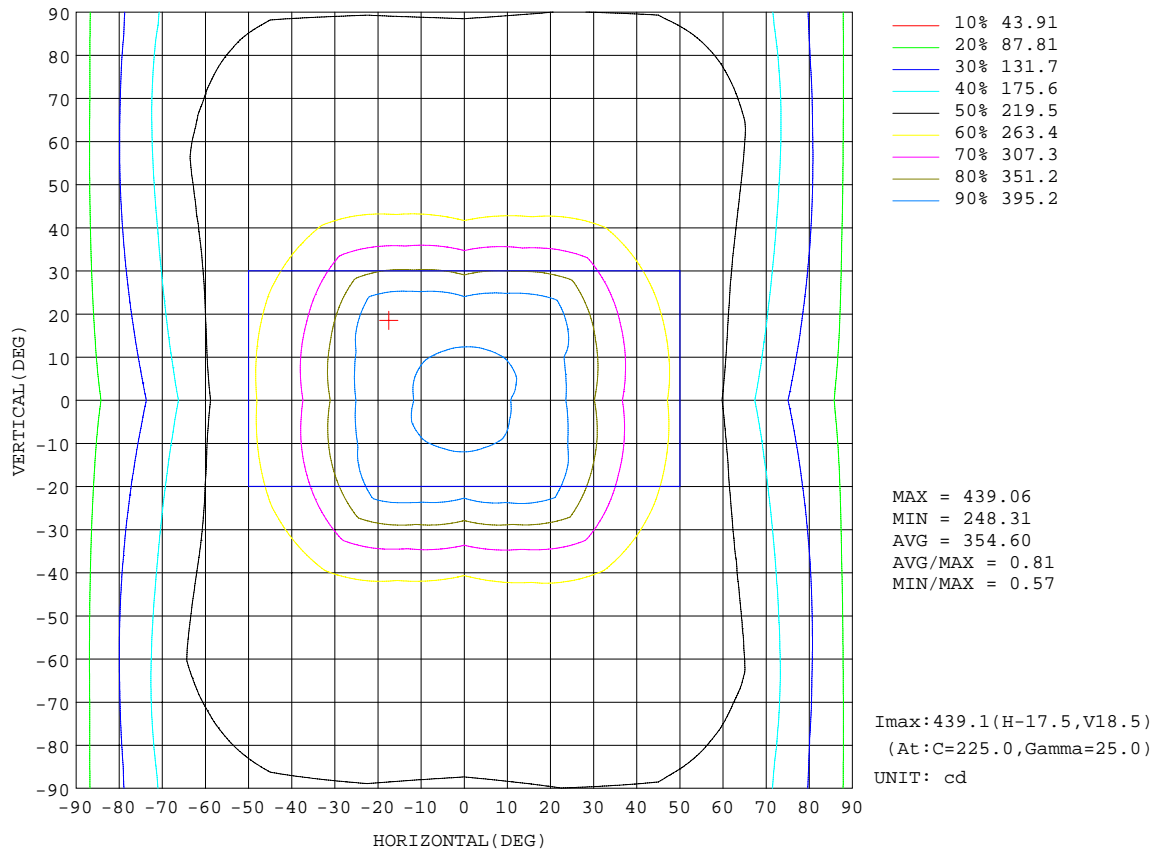
REFLECTANCE										
Ceiling	0.8	0.8	0.8	0.7	0.7	0.7	0.5	0.5	0.5	0
Walls	0.7	0.5	0.3	0.7	0.5	0.3	0.7	0.5	0.3	0
Working plane	0.2	0.2	0.2	0.2	0.2	0.2	0.2	0.2	0.2	0
ROOM INDEX	UTILIZATION FACTORS(PERCENT) k(RI) x RCR = 5									
k = 0.60	44	32	25	43	31	24	41	30	24	17
0.80	53	40	32	51	39	31	48	37	30	22
1.00	60	47	38	58	45	37	53	45	36	26
1.25	67	53	44	64	52	43	59	48	41	30
1.50	72	59	50	69	57	48	63	53	46	34
2.00	79	67	58	75	64	56	68	59	52	39
2.50	84	73	64	80	70	62	72	64	57	42
3.00	88	77	69	83	74	66	75	68	61	45
4.00	92	84	76	88	80	73	79	73	67	50
5.00	96	88	81	91	84	78	81	76	71	53
ROOM INDEX	UF(total)									Direct
According to DIN EN 13032-2 2004			Suspended				SHRNOM = 1.25			

C Range: 0 - 360DEG
 C Interval: 22.5DEG
 Test Speed: 10.0deg/s
 Temperature:25.2DEG
 Operators:Monkey

γ Range: 0 - 180DEG
 γ Interval: 1.0DEG
 Test System:EVERFINE GO-R5000_V2 SYSTEM V2.0.351
 Humidity:45%
 Test Distance:2.447m [K=1.0000]
 Remarks:

ISOCANDELA DIAGRAM

Test:U:120.0V I:0.2611A P:30.79W PF:0.9829 Lamp Flux:2363.47x1 lm		
NAME: 4902BN-4	TYPE:N/A	WEIGHT:N/A
SPEC.:N/A	DIM.: N/A	SERIAL No.:N/A
MFR.:	SUR.:N/A	Shielding Angle:N/A

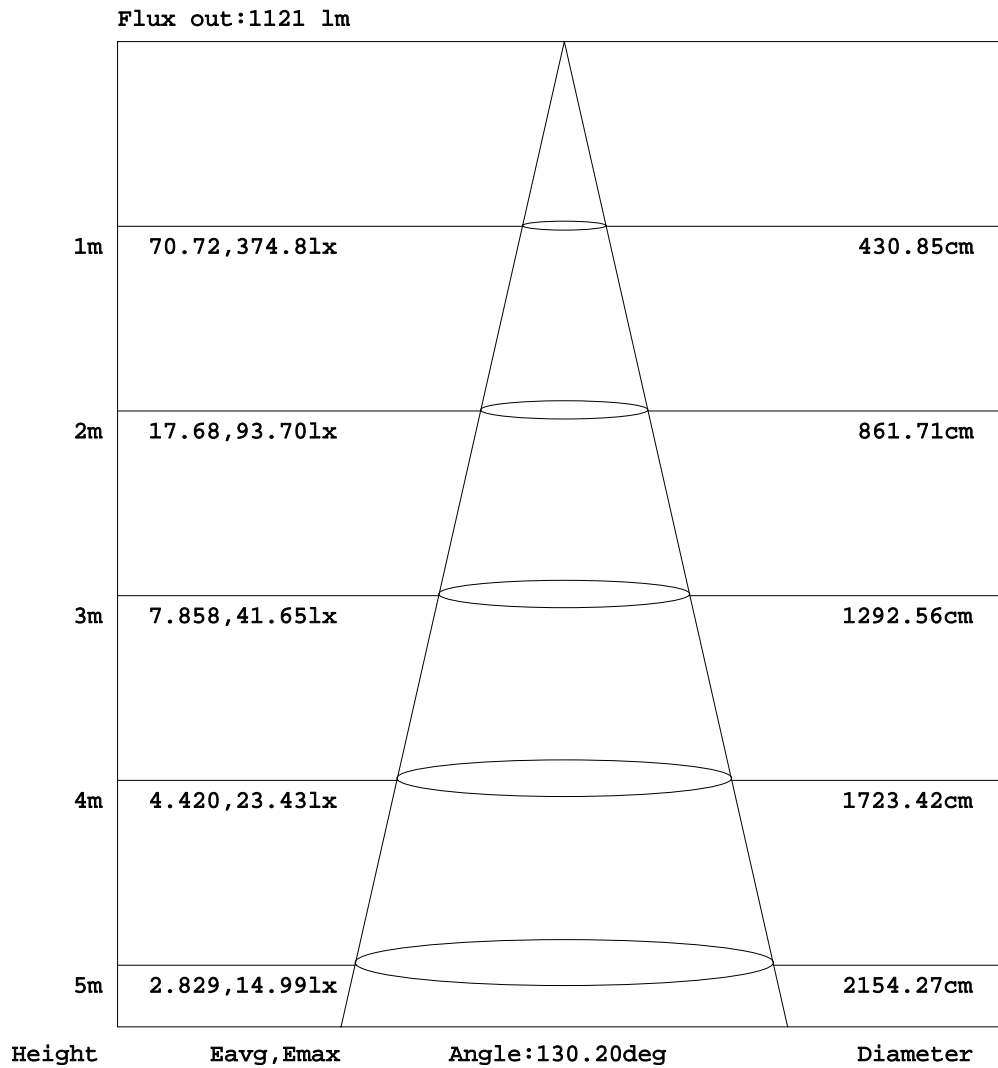


C Range: 0 - 360DEG
 C Interval: 22.5DEG
 Test Speed: 10.0deg/s
 Temperature: 25.2DEG
 Operators: Monkey

γ Range: 0 - 180DEG
 γ Interval: 1.0DEG
 Test System: EVERFINE GO-R5000_V2 SYSTEM V2.0.351
 Humidity: 45%
 Test Distance: 2.447m [K=1.0000]
 Remarks:

AAI Figure

Test:U:120.0V I:0.2611A P:30.79W PF:0.9829 Lamp Flux:2363.47x1 lm		
NAME:4902BN-4	TYPE:N/A	WEIGHT:N/A
SPEC.:N/A	DIM.: N/A	SERIAL No.:N/A
MFR.:	SUR.:N/A	Shielding Angle:N/A



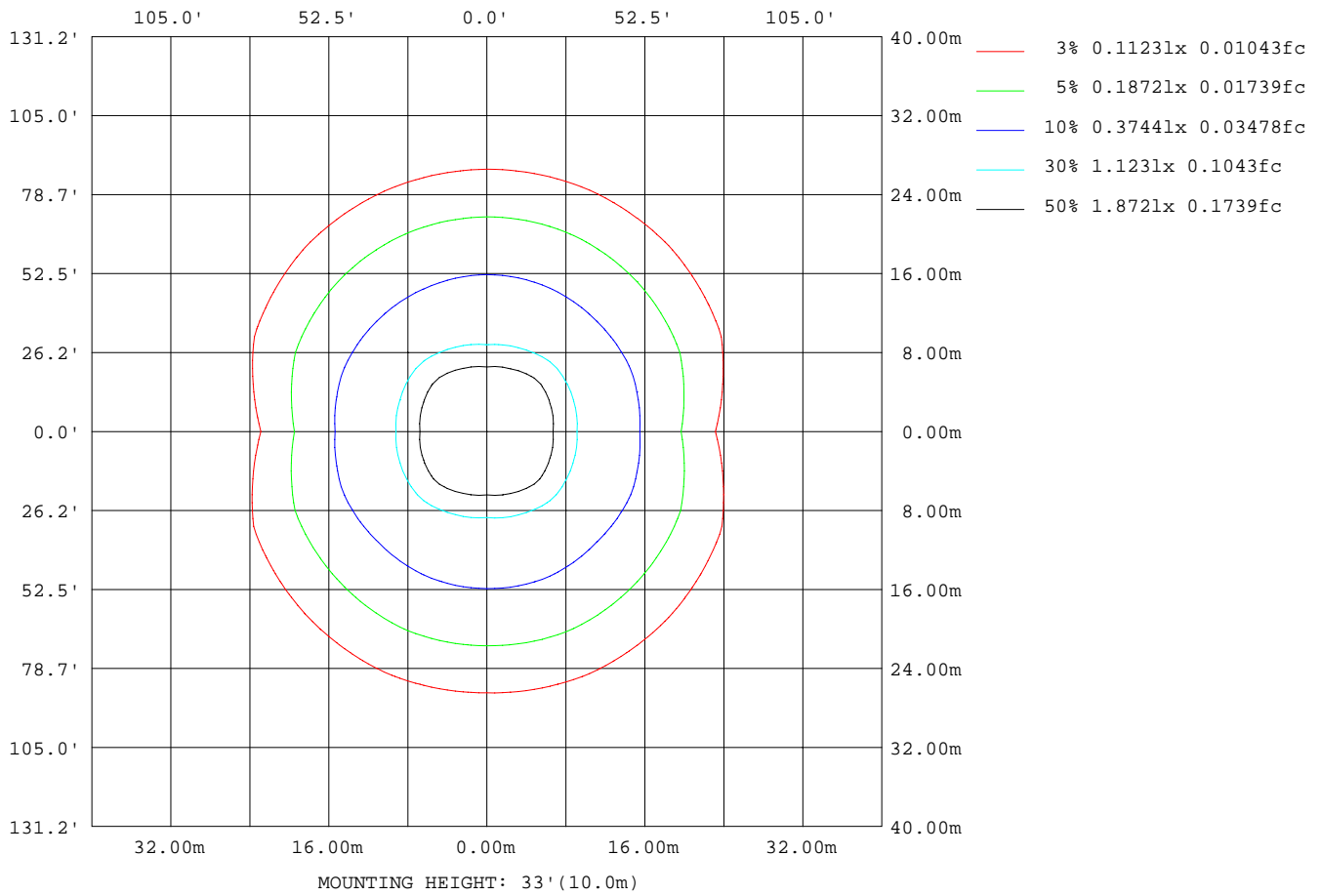
Note:The Curves indicate the illuminated area and the average illumination when the luminaire is at different distance.

C Range: 0 - 360DEG
 C Interval: 22.5DEG
 Test Speed: 10.0deg/s
 Temperature:25.2DEG
 Operators:Monkey

γ Range: 0 - 180DEG
 γ Interval: 1.0DEG
 Test System:EVERFINE GO-R5000_V2 SYSTEM V2.0.351
 Humidity:45%
 Test Distance:2.447m [K=1.0000]
 Remarks:

ISOLUX DIAGRAM

Test:U:120.0V I:0.2611A P:30.79W PF:0.9829 Lamp Flux:2363.47x1 lm		
NAME:4902BN-4	TYPE:N/A	WEIGHT:N/A
SPEC.:N/A	DIM.: N/A	SERIAL No.:N/A
MFR.:	SUR.:N/A	Shielding Angle:N/A



C Range: 0 - 360DEG
 C Interval: 22.5DEG
 Test Speed: 10.0deg/s
 Temperature:25.2DEG
 Operators:Monkey

γ Range: 0 - 180DEG
 γ Interval: 1.0DEG
 Test System:EVERFINE GO-R5000_V2 SYSTEM V2.0.351
 Humidity:45%
 Test Distance:2.447m [K=1.0000]
 Remarks:

LED Avg.L Report

Test:U:120.0V I:0.2611A P:30.79W PF:0.9829 Lamp Flux:2363.47x1 lm		
NAME:4902BN-4	TYPE:N/A	WEIGHT:N/A
SPEC.:N/A	DIM.: N/A	SERIAL No.:N/A
MFR.:	SUR.:N/A	Shielding Angle:N/A

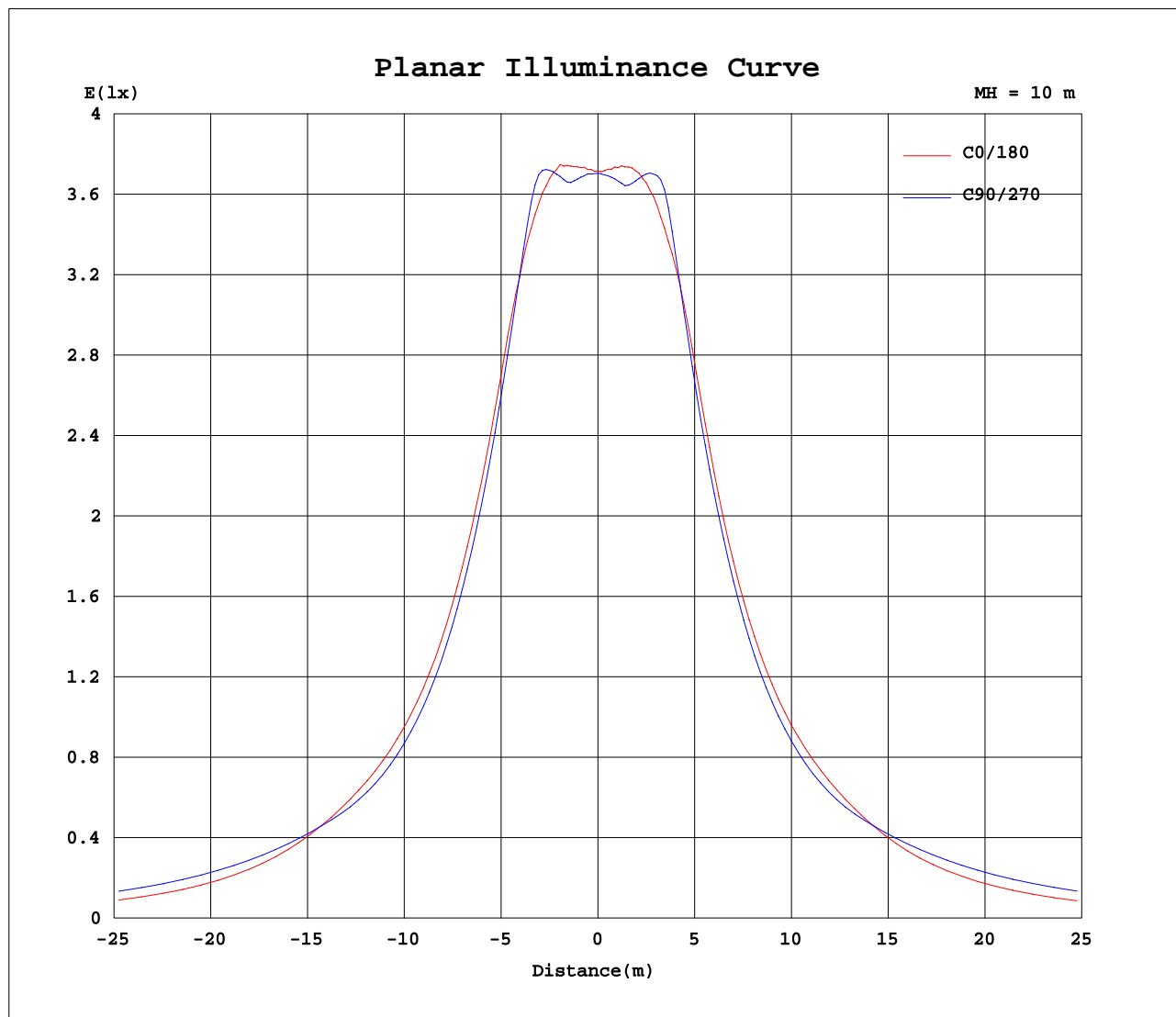
AvgL	cd/m2
L_0~180(65)av	4397092
L_0~180(75)av	4945247
L_0~180(85)av	10078280
L_90~270(65)av	6052995
L_90~270(75)av	9681774
L_90~270(85)av	26229050
L_45(65)av	5857029
L_45(75)av	9483058
L_45(85)av	26307289

Standard: GB/T 29293-2012

C Range: 0 - 360DEG
 C Interval: 22.5DEG
 Test Speed: 10.0deg/s
 Temperature:25.2DEG
 Operators:Monkey

γ Range: 0 - 180DEG
 γ Interval: 1.0DEG
 Test System:EVERFINE GO-R5000_V2 SYSTEM V2.0.351
 Humidity:45%
 Test Distance:2.447m [K=1.0000]
 Remarks:

Planar Illuminance Curve



C Range: 0 - 360DEG
 C Interval: 22.5DEG
 Test Speed: 10.0deg/s
 Temperature: 25.2DEG
 Operators: Monkey

γ Range: 0 - 180DEG
 γ Interval: 1.0DEG
 Test System: EVERFINE GO-R5000_V2 SYSTEM V2.0.351
 Humidity: 45%
 Test Distance: 2.447m [K=1.0000]
 Remarks:

LUMINOUS DISTRIBUTION INTENSITY DATA

Test:U:120.0V I:0.2611A P:30.79W PF:0.9829 Lamp Flux:2363.47x1 lm		
NAME:4902BN-4	TYPE:N/A	WEIGHT:N/A
SPEC.:N/A	DIM.: N/A	SERIAL No.:N/A
MFR.:	SUR.:N/A	Shielding Angle:N/A

Table--1

UNIT: cd

C(DEG) γ (DEG)	0	22.5	45	67.5	90	112.5	135	157.5	180	202.5	225	247.5	270	292.5	315	337.5			
0	371	371	371	371	371	371	371	371	371	371	371	371	371	371	371	371			
5	377	377	376	374	373	373	375	376	377	376	374	373	372	373	374	375			
10	391	390	386	385	385	384	385	389	390	389	385	383	383	382	383	387			
15	403	401	406	413	413	412	405	400	401	399	404	411	412	409	404	400			
20	405	406	428	432	416	429	428	405	405	405	424	438	426	433	427	404			
25	387	398	436	399	376	398	432	403	395	403	439	413	387	407	435	397			
30	352	371	399	357	335	357	402	378	360	378	414	369	344	367	406	374			
35	317	335	358	319	298	319	361	342	322	341	370	329	305	326	366	340			
40	287	302	321	286	267	285	322	308	292	308	330	293	272	290	327	307			
45	268	276	287	261	246	259	288	281	271	281	294	265	249	263	291	280			
50	257	260	260	246	237	244	261	263	258	264	265	246	237	245	263	262			
55	244	251	246	245	243	242	245	251	241	250	248	240	242	242	247	252			
60	218	246	246	254	251	251	241	242	213	240	243	248	252	251	245	245			
65	189	241	250	258	255	255	244	236	183	234	246	253	256	256	250	239			
70	159	234	250	258	254	255	245	231	153	228	247	254	257	257	251	234			
75	132	226	247	254	249	251	242	224	124	220	245	251	252	254	248	227			
80	109	218	240	246	239	243	235	216	102	213	239	243	244	247	243	219			
85	91.0	207	230	233	227	231	226	207	84.7	204	229	232	231	235	233	210			
90	76.1	196	217	219	212	217	214	196	69.6	193	216	218	215	220	219	198			
95	70.6	187	205	205	197	203	202	187	64.7	175	200	202	198	204	203	181			
100	56.7	176	191	190	181	188	189	176	55.3	149	175	181	176	183	178	155			
105	41.7	164	176	174	166	173	175	164	39.4	134	150	157	148	159	153	138			
110	49.8	153	162	158	150	157	161	153	48.8	121	129	135	123	137	133	124			
115	59.0	140	149	142	135	142	148	140	59.4	112	110	116	104	117	116	114			
120	62.1	125	134	128	122	128	133	126	60.5	108	95.9	101	88.9	102	102	108			
125	59.6	110	119	116	110	115	119	111	59.1	98.7	87.3	88.1	77.0	88.9	90.7	98.3			
130	54.5	95.0	106	104	99.7	103	105	96.1	54.2	82.4	79.5	77.4	67.3	78.0	81.6	86.3			
135	48.1	80.8	92.7	92.1	88.4	91.3	92.5	81.9	48.8	70.1	72.8	68.2	59.3	68.5	74.4	73.0			
140	42.7	68.1	80.6	80.7	77.4	80.0	80.2	68.6	43.7	59.2	68.4	60.3	52.4	60.2	68.8	62.6			
145	40.2	58.4	69.0	69.6	68.1	69.1	68.6	57.1	39.3	49.0	61.8	55.6	47.8	54.4	62.3	55.3			
150	36.9	47.5	58.0	58.9	58.6	58.7	57.4	47.1	35.3	39.5	52.6	52.0	47.5	50.9	54.5	46.9			
155	32.5	39.6	47.1	49.2	49.5	49.1	46.9	39.4	31.5	31.3	42.0	45.3	45.1	45.8	46.6	39.5			
160	27.2	33.2	38.9	40.7	41.3	40.7	38.7	32.9	28.1	27.4	30.8	37.1	39.3	39.6	39.2	35.0			
165	20.4	26.6	32.0	34.1	34.7	34.1	30.5	22.9	21.6	21.2	23.0	30.6	33.7	34.0	33.6	30.1			
170	17.1	19.3	26.6	28.0	28.1	27.4	20.3	18.3	17.8	17.6	17.3	19.6	28.1	28.6	28.0	25.8			
175	14.8	14.3	16.5	21.5	22.3	15.8	14.1	14.7	14.2	14.1	14.3	14.4	17.6	23.2	22.9	17.1			
180	14.9	14.1	12.7	12.0	3.64	10.9	12.9	14.0	16.8	16.8	16.0	14.1	11.6	8.60	12.4	14.3			

C Range: 0 - 360DEG
 C Interval: 22.5DEG
 Test Speed: 10.0deg/s
 Temperature:25.2DEG
 Operators:Monkey

γ Range: 0 - 180DEG
 γ Interval: 1.0DEG
 Test System:EVERFINE GO-R5000_V2 SYSTEM V2.0.351
 Humidity:45%
 Test Distance:2.447m [K=1.0000]
 Remarks: