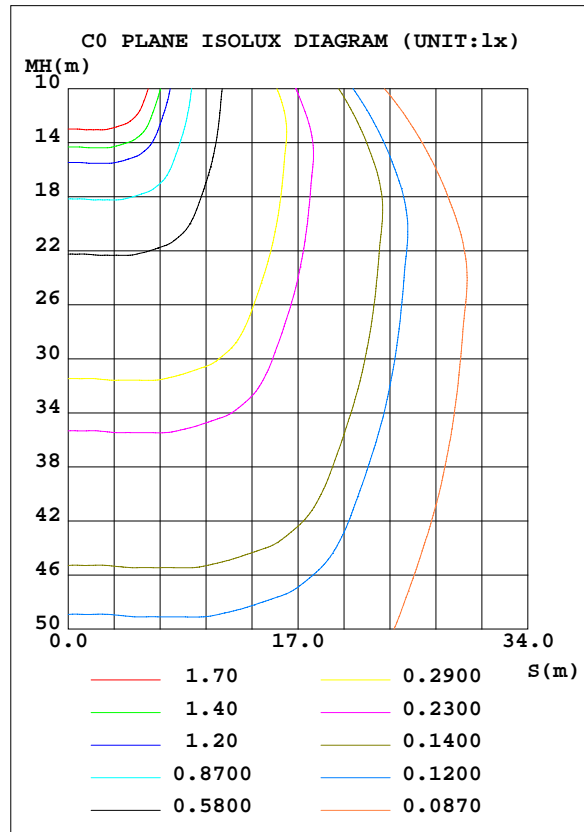
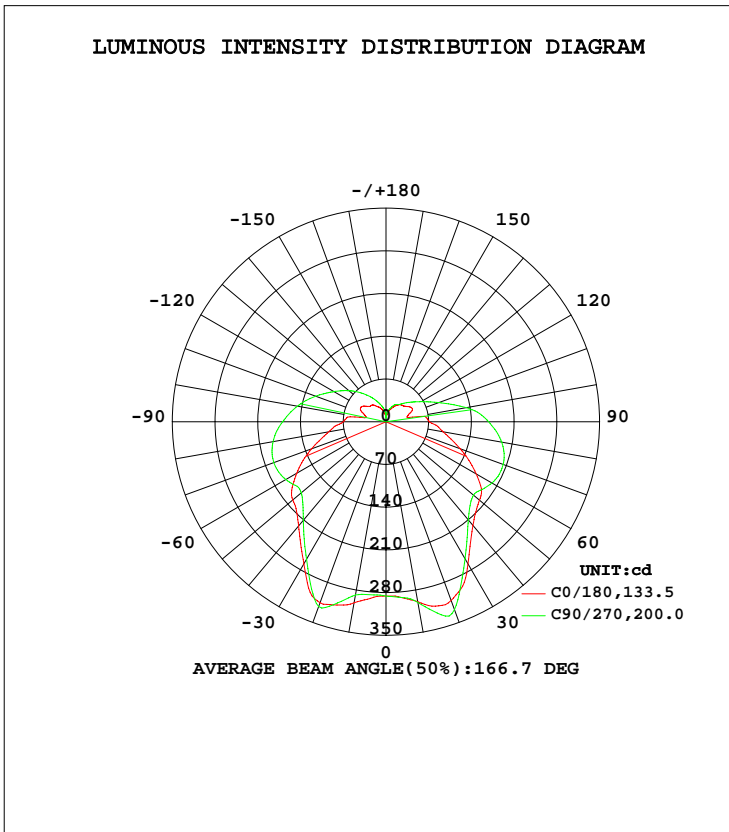


LUMINAIRE PHOTOMETRIC TEST REPORT

Test:U:120.0V I:0.2079A P:24.36W PF:0.9763 Lamp Flux:1840.21x1 lm		
NAME:4902BN-3	TYPE:N/A	WEIGHT:N/A
SPEC.:N/A	DIM.: N/A	SERIAL No.:N/A
MFR.:	SUR.:N/A	Shielding Angle:N/A

DATA OF LAMP		PHOTOMETRIC DATA			
MODEL	PSZ2C170912002-10	Imax(cd)	345.1	S/MH(C0/180)	1.33
NOMINAL POWER(W)	24	LOR(%)	100.0	S/MH(C90/270)	1.30
RATED VOLTAGE(V)	12	TOTAL FLUX(lm)	1840.2	η UP, DN(C0-180)	16.0, 35.4
NOMINAL FLUX(lm)	1840.21	CIE CLASS	SEMI-D.	η UP, DN(C180-360)	12.9, 35.8
LAMPS INSIDE	1	η up(%)	28.9	CIBSE SHR NOM	1.50
TEST VOLTAGE(V)	120	η down(%)	71.1	CIBSE SHR MAX	1.55



C Range: 0 - 360DEG
 C Interval: 22.5DEG
 Test Speed: 10.0deg/s
 Temperature:25.2DEG
 Operators:Monkey

γ Range: 0 - 180DEG
 γ Interval: 1.0DEG
 Test System:EVERFINE GO-R5000_V2 SYSTEM V2.0.351
 Humidity:45%
 Test Distance:2.447m [K=1.0000]
 Remarks:

ZONAL FLUX DIAGRAM

ZONAL FLUX DIAGRAM:

γ	C0	C45	C90	C135	C180	C225	C270	C315	γ	Φ zone	Φ total	%lum,lamp
10	301.3	292.3	288.1	292.2	299.5	297.3	300.6	297.2	0- 10	27.73	27.73	1.51,1.51
20	315.8	319.9	322.4	323.5	311.8	337.9	328.0	334.4	10- 20	88.79	116.5	6.33,6.33
30	269.1	313.4	260.5	308.1	268.9	307.1	259.0	315.8	20- 30	142.8	259.3	14.1,14.1
40	222.9	250.8	210.8	249.9	221.8	246.6	210.0	250.7	30- 40	160.3	419.7	22.8,22.8
50	199.5	203.9	181.3	204.1	200.0	203.0	187.4	203.9	40- 50	164.0	583.6	31.7,31.7
60	168.8	184.8	189.5	184.4	170.6	189.1	200.5	188.9	50- 60	171.2	754.9	41,41
70	129.8	189.0	195.6	189.1	129.4	194.1	204.3	193.1	60- 70	185.4	940.2	51.1,51.1
80	95.31	184.3	187.9	184.6	95.23	187.8	192.5	186.7	70- 80	189.6	1130	61.4,61.4
90	70.18	169.5	169.2	170.5	71.24	168.5	168.3	167.8	80- 90	179.4	1309	71.1,71.1
100	43.56	150.9	147.5	152.6	44.36	129.0	133.7	125.8	90-100	156.0	1465	79.6,79.6
110	39.41	128.9	122.7	130.1	41.97	87.83	92.18	85.02	100-110	119.4	1585	86.1,86.1
120	47.58	108.3	98.91	109.2	47.31	65.76	66.10	63.62	110-120	90.83	1675	91,91
130	39.31	87.57	79.31	88.25	39.92	52.26	49.75	51.89	120-130	67.14	1743	94.7,94.7
140	35.78	66.89	61.26	67.61	36.71	50.02	38.08	48.66	130-140	45.80	1788	97.2,97.2
150	28.89	47.48	45.44	47.60	30.05	38.72	32.96	38.55	140-150	28.75	1817	98.7,98.7
160	22.86	31.37	32.18	31.21	21.91	24.61	25.41	26.60	150-160	15.35	1833	99.6,99.6
170	13.10	20.32	21.75	17.98	12.46	11.84	17.17	17.97	160-170	6.414	1839	99.9,99.9
180	12.77	10.10	0	10.15	11.13	11.17	7.315	6.812	170-180	1.288	1840	100,100
DEG	LUMINOUS INTENSITY:cd Less than 25% Percent = 42.2 %									UNIT:lm		

Conical surface Flux(90deg): 501.34 lm

%lum = 27.2%
 %lamp = 27.2%

Conical surface Flux(120deg): 754.87 lm

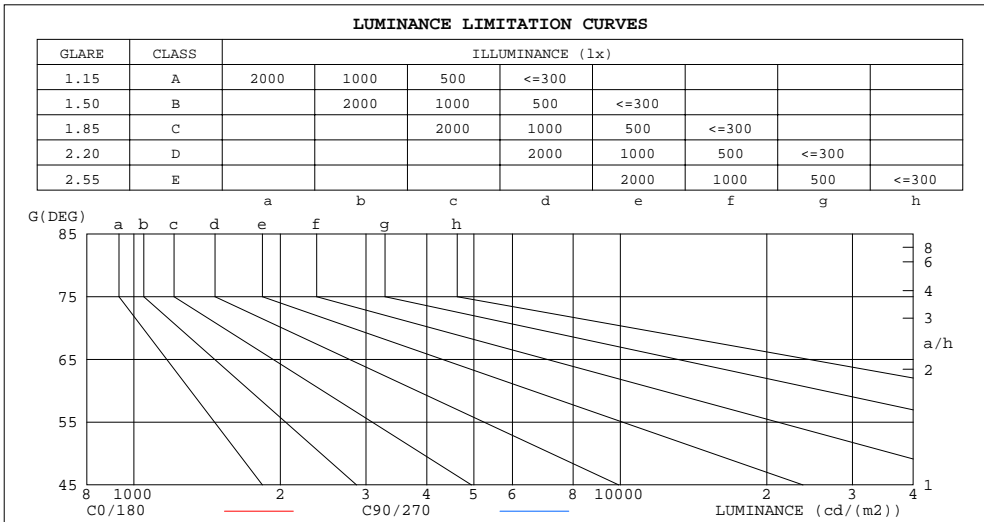
%lum = 41.0%
 %lamp = 41.0%

C Range: 0 - 360DEG
 C Interval: 22.5DEG
 Test Speed: 10.0deg/s
 Temperature:25.2DEG
 Operators:Monkey

γ Range: 0 - 180DEG
 γ Interval: 1.0DEG
 Test System:EVERFINE GO-R5000_V2 SYSTEM V2.0.351
 Humidity:45%
 Test Distance:2.447m [K=1.0000]
 Remarks:

LUMINANCE LIMITATION CURVES

Test:U:120.0V I:0.2079A P:24.36W PF:0.9763 Lamp Flux:1840.21x1 lm		
NAME:4902BN-3	TYPE:N/A	WEIGHT:N/A
SPEC.:N/A	DIM.: N/A	SERIAL No.:N/A
MFR.:	SUR.:N/A	Shielding Angle:N/A



LUMINANCE cd/(m2)		
G(DEG)	C0/180	C90/270
85	9668361	20615657
80	5517920	10812435
75	4300818	7466988
70	3815183	5715456
65	3565764	4592636
60	3393674	3787428
55	3289366	3167096
50	3120111	2818922
45	2947270	2723285

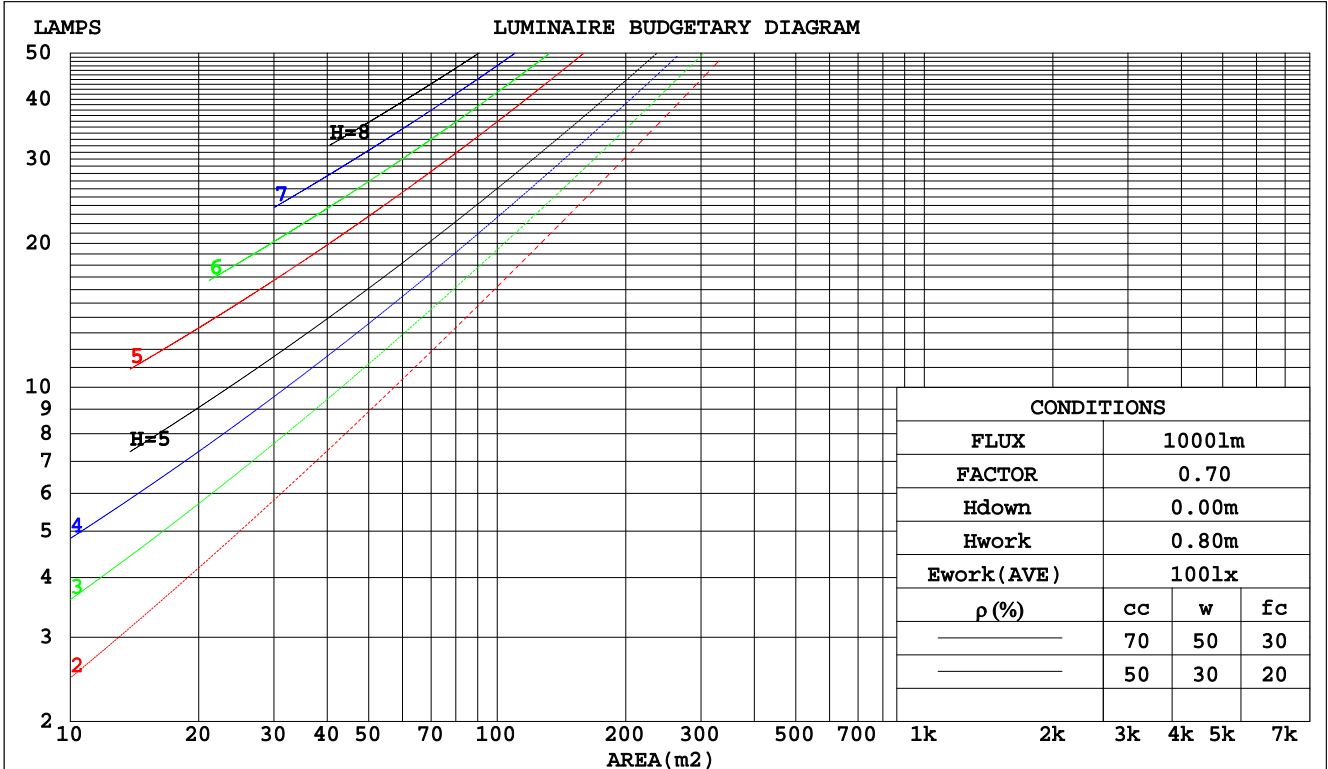
C Range: 0 - 360DEG
 C Interval: 22.5DEG
 Test Speed: 10.0deg/s
 Temperature:25.2DEG
 Operators:Monkey

γ Range: 0 - 180DEG
 γ Interval: 1.0DEG
 Test System:EVERFINE GO-R5000_V2 SYSTEM V2.0.351
 Humidity:45%
 Test Distance:2.447m [K=1.0000]
 Remarks:

CU AND LUMINAIRE BUDGETARY ESTIMATE DIAGRAM

Test:U:120.0V I:0.2079A P:24.36W PF:0.9763 Lamp Flux:1840.21x1 lm		
NAME:4902BN-3	TYPE:N/A	WEIGHT:N/A
SPEC.:N/A	DIM.: N/A	SERIAL No.:N/A
MFR.:	SUR.:N/A	Shielding Angle:N/A

pcc	80%			70%			50%			30%			10%			0
	50%	30%	10%	50%	30%	10%	50%	30%	10%	50%	30%	10%	50%	30%	10%	0
pw																
pfc	20%			20%			20%			20%			20%			0
RCR	RCR:Room Cavity Ratio						Coefficients of Utilization(CU)									
0.0	1.12	1.12	1.12	1.06	1.06	1.06	.95	.95	.95	.85	.85	.85	.76	.76	.76	.71
1.0	.92	.86	.81	.86	.81	.77	.77	.73	.69	.68	.65	.62	.60	.57	.55	.51
2.0	.78	.70	.63	.73	.66	.60	.65	.59	.54	.57	.53	.49	.50	.47	.43	.39
3.0	.67	.58	.51	.64	.55	.49	.56	.50	.44	.50	.44	.40	.44	.39	.35	.32
4.0	.59	.50	.42	.56	.47	.40	.50	.42	.37	.44	.38	.33	.38	.34	.30	.26
5.0	.52	.43	.36	.50	.41	.34	.44	.37	.31	.39	.33	.28	.34	.29	.26	.23
6.0	.47	.38	.31	.44	.36	.30	.40	.33	.27	.35	.29	.25	.31	.26	.22	.19
7.0	.42	.33	.27	.40	.32	.26	.36	.29	.24	.32	.26	.22	.28	.23	.20	.17
8.0	.38	.30	.24	.37	.28	.23	.33	.26	.21	.29	.24	.19	.26	.21	.17	.15
9.0	.35	.27	.21	.33	.26	.20	.30	.23	.19	.27	.21	.17	.24	.19	.16	.14
10.0	.32	.24	.19	.31	.23	.18	.28	.21	.17	.25	.19	.16	.22	.18	.14	.12



C Range: 0 - 360DEG
 C Interval: 22.5DEG
 Test Speed: 10.0deg/s
 Temperature:25.2DEG
 Operators:Monkey

γ Range: 0 - 180DEG
 γ Interval: 1.0DEG
 Test System:EVERFINE GO-R5000_V2 SYSTEM V2.0.351
 Humidity:45%
 Test Distance:2.447m [K=1.0000]
 Remarks:

WEC AND CCEC

Test:U:120.0V I:0.2079A P:24.36W PF:0.9763 Lamp Flux:1840.21x1 lm		
NAME:4902BN-3	TYPE:N/A	WEIGHT:N/A
SPEC.:N/A	DIM.: N/A	SERIAL No.:N/A
MFR.:	SUR.:N/A	Shielding Angle:N/A

ρcc	80%			70%			50%			30%			10%			0
ρw	50%	30%	10%	50%	30%	10%	50%	30%	10%	50%	30%	10%	50%	30%	10%	0
ρfc	20%			20%			20%			20%			20%			0
RCR	RCR:Room Cavity Ratio						Wall Exitance Coefficients(WEC)									
0.0																
1.0	.411	.234	.074	.395	.225	.072	.365	.210	.067	.338	.195	.062	.312	.181	.058	
2.0	.345	.189	.058	.331	.182	.056	.303	.169	.052	.278	.156	.049	.255	.144	.045	
3.0	.302	.161	.048	.288	.154	.046	.264	.143	.043	.241	.132	.040	.219	.121	.038	
4.0	.269	.140	.041	.257	.134	.040	.234	.124	.037	.213	.114	.035	.194	.105	.032	
5.0	.243	.124	.036	.232	.119	.035	.211	.110	.032	.192	.101	.030	.174	.093	.028	
6.0	.221	.111	.032	.211	.107	.031	.192	.099	.029	.175	.091	.027	.158	.083	.025	
7.0	.204	.101	.029	.194	.097	.028	.177	.089	.026	.161	.082	.024	.145	.075	.022	
8.0	.188	.092	.026	.180	.089	.025	.164	.082	.023	.149	.075	.022	.134	.069	.020	
9.0	.175	.085	.024	.167	.082	.023	.153	.075	.021	.138	.069	.020	.125	.064	.018	
10.0	.164	.079	.022	.157	.076	.021	.143	.070	.020	.130	.064	.018	.117	.059	.017	

ρcc	80%			70%			50%			30%			10%			0
ρw	50%	30%	10%	50%	30%	10%	50%	30%	10%	50%	30%	10%	50%	30%	10%	0
ρfc	20%			20%			20%			20%			20%			0
RCR	RCR:Room Cavity Ratio						Ceiling Cavity Exitance Coefficients(CCEC)									
0.0	.410	.410	.410	.351	.351	.351	.239	.239	.239	.138	.138	.138	.044	.044	.044	
1.0	.409	.377	.348	.350	.323	.300	.239	.223	.207	.138	.129	.120	.044	.041	.039	
2.0	.403	.355	.315	.345	.305	.272	.236	.211	.190	.136	.123	.111	.044	.040	.036	
3.0	.395	.339	.294	.339	.292	.255	.232	.203	.179	.134	.119	.105	.043	.039	.035	
4.0	.387	.327	.281	.332	.282	.244	.228	.197	.172	.132	.115	.102	.043	.038	.033	
5.0	.379	.317	.271	.326	.274	.236	.224	.192	.167	.130	.113	.099	.042	.037	.033	
6.0	.372	.309	.265	.319	.268	.231	.220	.188	.163	.128	.110	.097	.041	.036	.032	
7.0	.365	.303	.260	.314	.263	.227	.217	.184	.160	.126	.109	.096	.041	.036	.032	
8.0	.358	.298	.256	.308	.258	.223	.213	.181	.158	.124	.107	.094	.040	.035	.031	
9.0	.352	.293	.253	.303	.254	.221	.210	.179	.157	.122	.106	.094	.040	.035	.031	
10.0	.346	.289	.251	.298	.251	.219	.207	.176	.156	.121	.104	.093	.039	.034	.031	

C Range: 0 - 360DEG
 C Interval: 22.5DEG
 Test Speed: 10.0deg/s
 Temperature:25.2DEG
 Operators:Monkey

γ Range: 0 - 180DEG
 γ Interval: 1.0DEG
 Test System:EVERFINE GO-R5000_V2 SYSTEM V2.0.351
 Humidity:45%
 Test Distance:2.447m [K=1.0000]
 Remarks:

UGR(Unified Glare Rating) Table

Test:U:120.0V I:0.2079A P:24.36W PF:0.9763 Lamp Flux:1840.2lx1 lm										
NAME:4902BN-3					TYPE:N/A			WEIGHT:N/A		
SPEC.:N/A					DIM.: N/A			SERIAL No.:N/A		
MFR.:					SUR.:N/A			Shielding Angle:N/A		
ceiling/cavity	0.7	0.7	0.5	0.5	0.3	0.7	0.7	0.5	0.5	0.3
walls	0.5	0.3	0.5	0.3	0.3	0.5	0.3	0.5	0.3	0.3
working plane	0.2	0.2	0.2	0.2	0.2	0.2	0.2	0.2	0.2	0.2
Room dimensions	Viewed crosswise					Viewed endwise				
x = 2H y = 2H	38.9	40.2	39.6	40.9	41.6	39.1	40.4	39.7	41.0	41.8
3H	41.4	42.6	42.1	43.2	44.0	42.4	43.5	43.0	44.2	45.0
4H	42.6	43.7	43.3	44.4	45.3	44.2	45.3	44.9	46.0	46.8
6H	43.9	44.9	44.6	45.7	46.5	46.1	47.2	46.8	47.9	48.8
8H	44.6	45.6	45.3	46.3	47.2	47.2	48.2	47.9	48.9	49.8
12H	45.3	46.3	46.0	47.0	47.9	48.4	49.4	49.1	50.1	51.0
4H 2H	39.9	41.0	40.6	41.7	42.6	40.1	41.2	40.7	41.9	42.7
3H	42.8	43.7	43.5	44.5	45.4	43.5	44.5	44.2	45.2	46.1
4H	44.3	45.2	45.0	46.0	46.9	45.5	46.4	46.2	47.1	48.0
6H	45.9	46.7	46.6	47.5	48.4	47.6	48.4	48.4	49.2	50.1
8H	46.7	47.4	47.4	48.2	49.2	48.8	49.5	49.5	50.3	51.3
12H	47.5	48.2	48.3	49.0	50.0	50.1	50.8	50.8	51.6	52.5
8H 4H	45.3	46.0	46.1	46.8	47.8	46.1	46.9	46.9	47.7	48.6
6H	47.3	47.9	48.1	48.7	49.7	48.6	49.2	49.4	50.0	51.0
8H	48.4	49.0	49.2	49.8	50.8	49.9	50.5	50.7	51.3	52.3
12H	49.5	50.0	50.4	50.9	51.9	51.4	52.0	52.3	52.8	53.8
12H 4H	45.5	46.2	46.3	47.1	48.0	46.3	47.0	47.1	47.8	48.8
6H	47.7	48.3	48.6	49.1	50.2	48.8	49.4	49.7	50.3	51.3
8H	49.0	49.5	49.8	50.4	51.4	50.3	50.8	51.2	51.7	52.7
Variations with the observer position at spacings:										
S = 1.0H	+ 0.1 / - 0.1					+ 0.1 / - 0.1				
1.5H	+ 0.2 / - 0.3					+ 0.2 / - 0.3				
2.0H	+ 0.3 / - 0.5					+ 0.3 / - 0.4				

CIE Pub.117 Corrected 1840 lm Total Lamp Luminous Flux.(8log(F/F0) = 2.1)

C Range: 0 - 360DEG
 C Interval: 22.5DEG
 Test Speed: 10.0deg/s
 Temperature:25.2DEG
 Operators:Monkey

γ Range: 0 - 180DEG
 γ Interval: 1.0DEG
 Test System:EVERFINE GO-R5000_V2 SYSTEM V2.0.351
 Humidity:45%
 Test Distance:2.447m [K=1.0000]
 Remarks:

UTILIZATION FACTORS TABLE

Test:U:120.0V I:0.2079A P:24.36W PF:0.9763 Lamp Flux:1840.21x1 lm		
NAME:4902BN-3	TYPE:N/A	WEIGHT:N/A
SPEC.:N/A	DIM.: N/A	SERIAL No.:N/A
MFR.:	SUR.:N/A	Shielding Angle:N/A

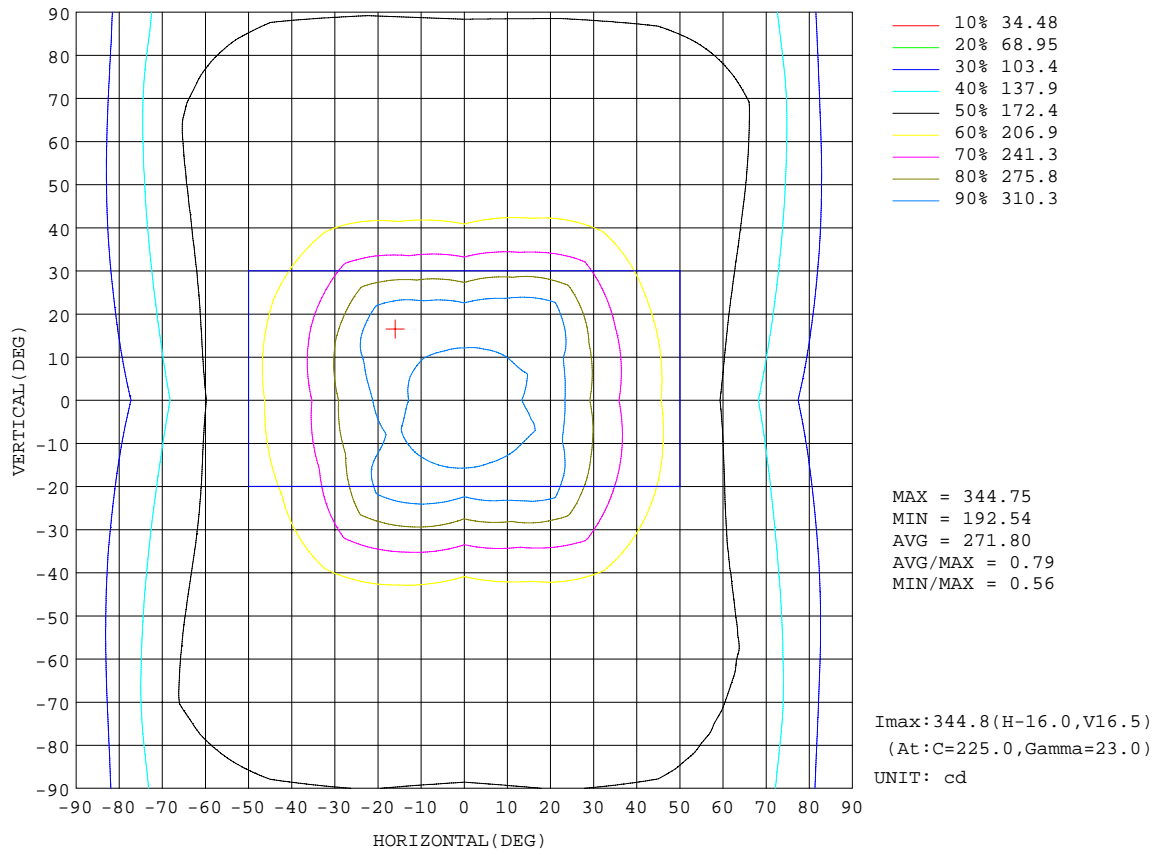
REFLECTANCE										
Ceiling	0.8	0.8	0.8	0.7	0.7	0.7	0.5	0.5	0.5	0
Walls	0.7	0.5	0.3	0.7	0.5	0.3	0.7	0.5	0.3	0
Working plane	0.2	0.2	0.2	0.2	0.2	0.2	0.2	0.2	0.2	0
ROOM INDEX	UTILIZATION FACTORS(PERCENT) $k(RI) \times RCR = 5$									
k = 0.60	44	32	25	43	31	24	40	30	24	17
0.80	53	39	31	51	38	31	47	37	30	21
1.00	60	46	38	58	45	37	53	45	35	26
1.25	67	53	44	64	51	43	58	48	41	30
1.50	72	58	49	68	56	48	62	52	45	33
2.00	79	67	58	75	64	56	68	59	52	38
2.50	84	72	64	79	69	61	72	63	57	42
3.00	87	77	69	83	74	66	75	67	61	45
4.00	92	83	76	87	80	73	79	72	67	49
5.00	96	88	81	90	84	78	81	76	71	52
ROOM INDEX	UF(total)									Direct
According to DIN EN 13032-2 2004			Suspended				SHRNOM = 1.25			

C Range: 0 - 360DEG
 C Interval: 22.5DEG
 Test Speed: 10.0deg/s
 Temperature:25.2DEG
 Operators:Monkey

γ Range: 0 - 180DEG
 γ Interval: 1.0DEG
 Test System:EVERFINE GO-R5000_V2 SYSTEM V2.0.351
 Humidity:45%
 Test Distance:2.447m [K=1.0000]
 Remarks:

ISOCANDELA DIAGRAM

Test:U:120.0V I:0.2079A P:24.36W PF:0.9763 Lamp Flux:1840.21x1 lm		
NAME:4902BN-3	TYPE:N/A	WEIGHT:N/A
SPEC.:N/A	DIM.: N/A	SERIAL No.:N/A
MFR.:	SUR.:N/A	Shielding Angle:N/A

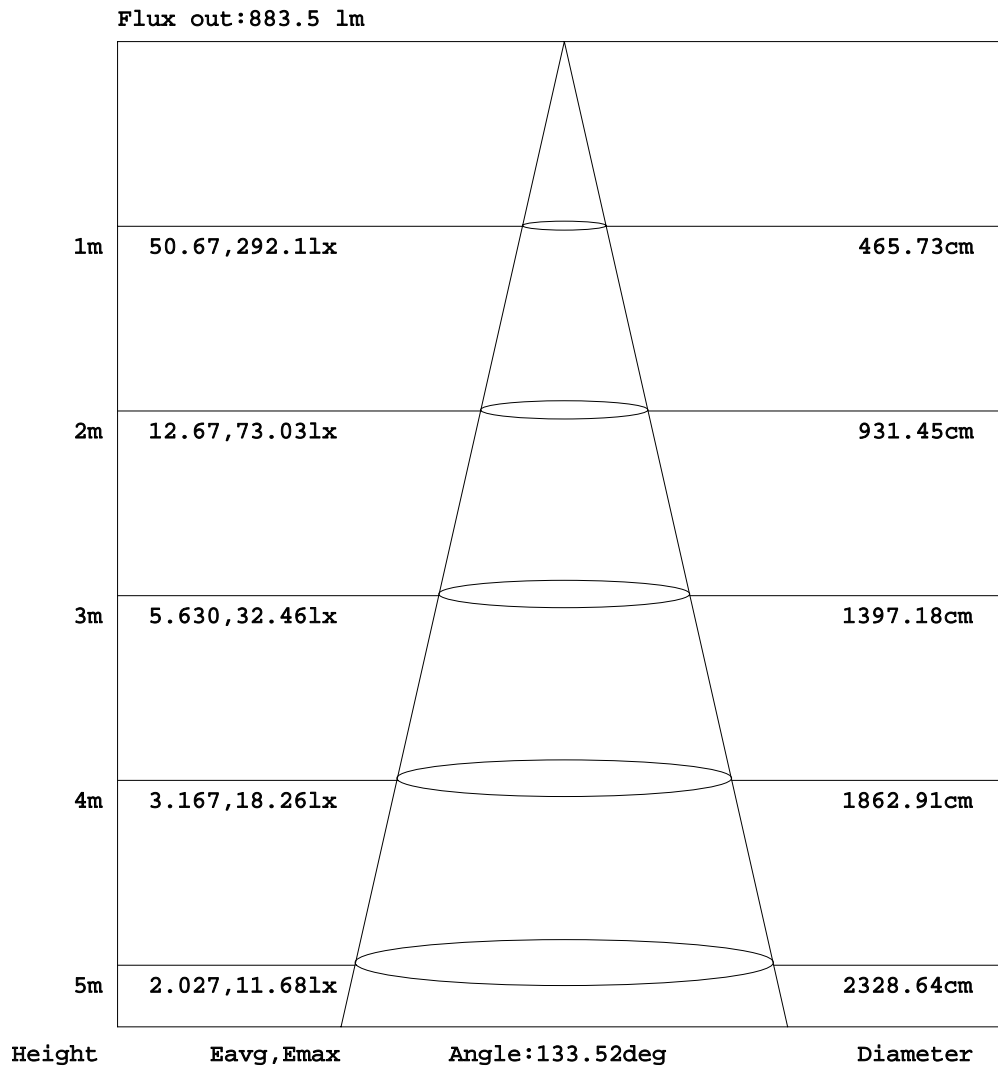


C Range: 0 - 360DEG
 C Interval: 22.5DEG
 Test Speed: 10.0deg/s
 Temperature:25.2DEG
 Operators:Monkey

γ Range: 0 - 180DEG
 γ Interval: 1.0DEG
 Test System:EVERFINE GO-R5000_V2 SYSTEM V2.0.351
 Humidity:45%
 Test Distance:2.447m [K=1.0000]
 Remarks:

AAI Figure

Test:U:120.0V I:0.2079A P:24.36W PF:0.9763 Lamp Flux:1840.21x1 lm		
NAME:4902BN-3	TYPE:N/A	WEIGHT:N/A
SPEC.:N/A	DIM.: N/A	SERIAL No.:N/A
MFR.:	SUR.:N/A	Shielding Angle:N/A



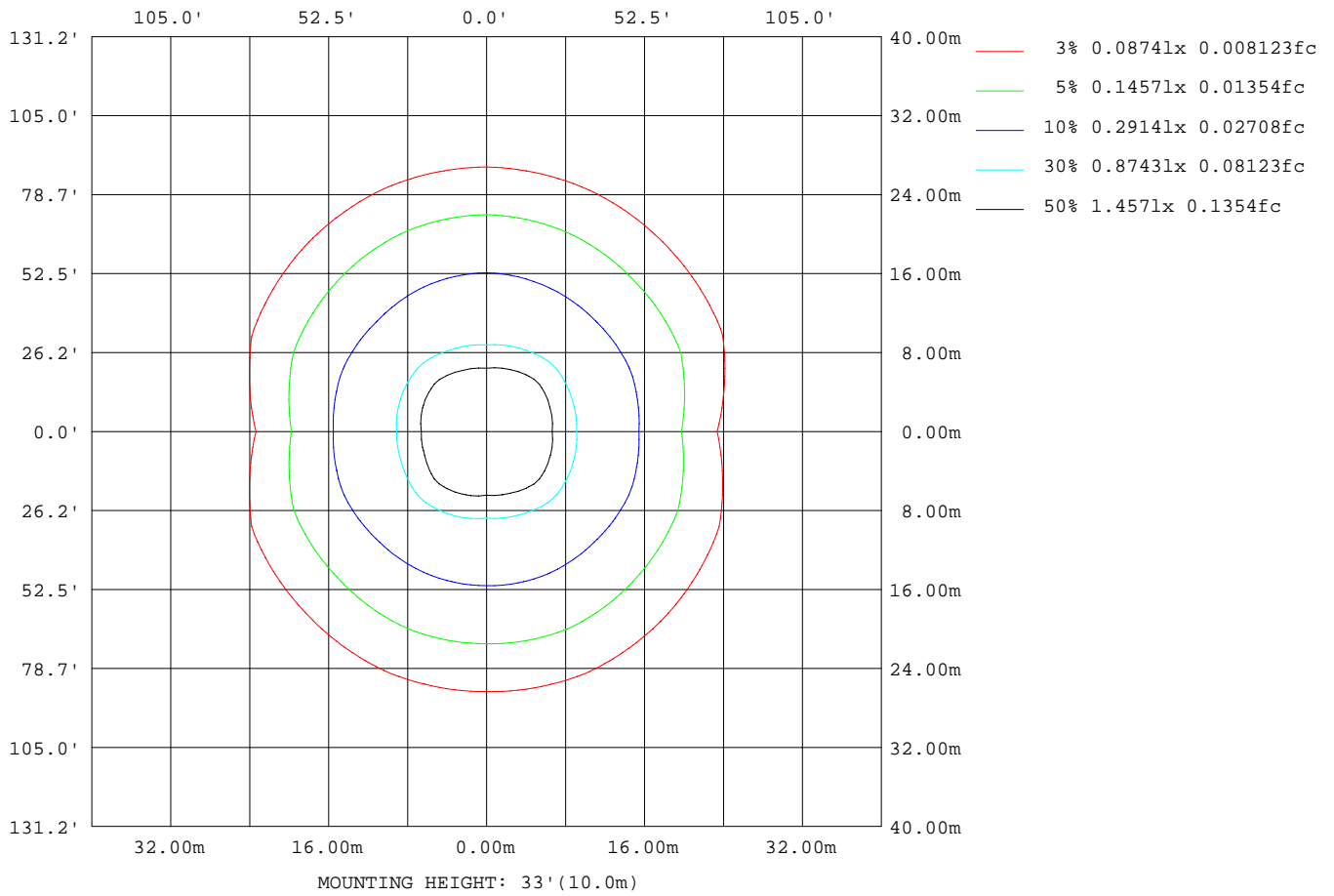
Note:The Curves indicate the illuminated area and the average illumination when the luminaire is at different distance.

C Range: 0 - 360DEG
 C Interval: 22.5DEG
 Test Speed: 10.0deg/s
 Temperature:25.2DEG
 Operators:Monkey

γ Range: 0 - 180DEG
 γ Interval: 1.0DEG
 Test System:EVERFINE GO-R5000_V2 SYSTEM V2.0.351
 Humidity:45%
 Test Distance:2.447m [K=1.0000]
 Remarks:

ISOLUX DIAGRAM

Test:U:120.0V I:0.2079A P:24.36W PF:0.9763 Lamp Flux:1840.21x1 lm		
NAME:4902BN-3	TYPE:N/A	WEIGHT:N/A
SPEC.:N/A	DIM.: N/A	SERIAL No.:N/A
MFR.:	SUR.:N/A	Shielding Angle:N/A



C Range: 0 - 360DEG
 C Interval: 22.5DEG
 Test Speed: 10.0deg/s
 Temperature:25.2DEG
 Operators:Monkey

γ Range: 0 - 180DEG
 γ Interval: 1.0DEG
 Test System:EVERFINE GO-R5000_V2 SYSTEM V2.0.351
 Humidity:45%
 Test Distance:2.447m [K=1.0000]
 Remarks:

LED Avg.L Report

Test:U:120.0V I:0.2079A P:24.36W PF:0.9763 Lamp Flux:1840.21x1 lm		
NAME:4902BN-3	TYPE:N/A	WEIGHT:N/A
SPEC.:N/A	DIM.: N/A	SERIAL No.:N/A
MFR.:	SUR.:N/A	Shielding Angle:N/A

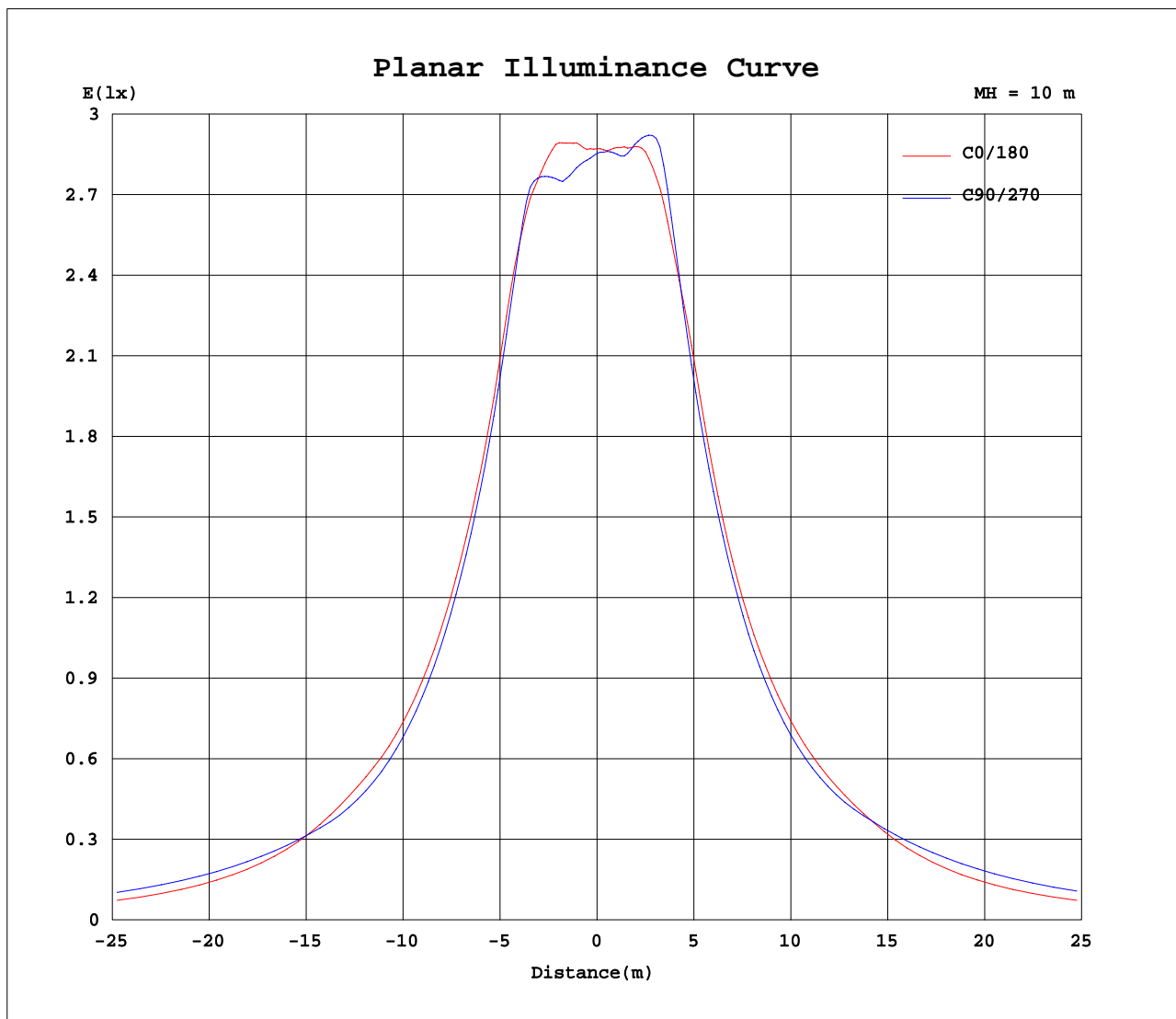
AvgL	cd/m2
L_0~180(65)av	3549069
L_0~180(75)av	4268126
L_0~180(85)av	9676314
L_90~270(65)av	4718750
L_90~270(75)av	7606297
L_90~270(85)av	20728338
L_45(65)av	4497303
L_45(75)av	7340063
L_45(85)av	20533885

Standard: GB/T 29293-2012

C Range: 0 - 360DEG
 C Interval: 22.5DEG
 Test Speed: 10.0deg/s
 Temperature:25.2DEG
 Operators:Monkey

γ Range: 0 - 180DEG
 γ Interval: 1.0DEG
 Test System:EVERFINE GO-R5000_V2 SYSTEM V2.0.351
 Humidity:45%
 Test Distance:2.447m [K=1.0000]
 Remarks:

Planar Illuminance Curve



C Range: 0 - 360DEG
 C Interval: 22.5DEG
 Test Speed: 10.0deg/s
 Temperature: 25.2DEG
 Operators: Monkey

γ Range: 0 - 180DEG
 γ Interval: 1.0DEG
 Test System: EVERFINE GO-R5000_V2 SYSTEM V2.0.351
 Humidity: 45%
 Test Distance: 2.447m [K=1.0000]
 Remarks:

LUMINOUS DISTRIBUTION INTENSITY DATA

Test:U:120.0V I:0.2079A P:24.36W PF:0.9763 Lamp Flux:1840.21x1 lm		
NAME:4902BN-3	TYPE:N/A	WEIGHT:N/A
SPEC.:N/A	DIM.: N/A	SERIAL No.:N/A
MFR.:	SUR.:N/A	Shielding Angle:N/A

Table--1

UNIT: cd

C(DEG) γ (DEG)	0	22.5	45	67.5	90	112.5	135	157.5	180	202.5	225	247.5	270	292.5	315	337.5			
0	286	286	286	286	286	286	286	286	286	286	286	286	286	286	286	286			
5	290	289	287	285	285	285	286	288	289	289	289	289	289	289	289	289			
10	301	297	292	289	288	288	292	298	299	299	297	299	301	299	297	299			
15	311	306	304	307	307	306	305	311	313	312	317	323	324	321	316	310			
20	316	311	320	327	322	327	324	311	312	317	338	338	328	339	334	317			
25	300	309	332	309	293	316	330	297	297	310	342	308	292	313	343	312			
30	269	286	313	276	260	285	308	277	269	291	307	274	259	279	316	286			
35	244	260	279	247	234	255	279	251	241	261	275	244	232	249	279	260			
40	223	236	251	224	211	229	250	229	222	236	247	220	210	225	251	235			
45	207	216	226	204	193	208	225	212	208	217	222	202	195	205	225	214			
50	199	202	204	190	181	192	204	201	200	203	203	191	187	193	204	201			
55	188	194	189	185	182	184	190	195	191	195	191	190	193	189	192	194			
60	169	186	185	191	190	190	184	189	171	189	189	198	201	196	189	191			
65	150	181	188	196	194	194	187	186	150	186	193	202	205	200	192	190			
70	130	177	189	198	196	196	189	184	129	182	194	202	204	200	193	186			
75	111	173	188	196	193	195	188	180	110	177	193	199	200	198	191	182			
80	95.3	168	184	191	188	190	185	175	95.2	171	188	193	193	191	187	175			
85	83.8	162	178	183	180	183	179	169	84.9	165	179	183	182	182	179	168			
90	70.2	155	170	173	169	173	170	161	71.2	156	169	170	168	169	168	158			
95	65.5	149	161	163	159	164	162	154	67.2	142	155	156	154	156	152	145			
100	43.6	141	151	152	147	153	153	146	44.4	123	129	134	134	136	126	123			
105	34.4	132	140	140	136	141	142	136	36.5	111	105	111	111	112	102	109			
110	39.4	124	129	127	123	128	130	126	42.0	101	87.8	92.2	92.2	93.3	85.0	97.2			
115	46.1	114	118	115	110	116	119	116	48.0	88.6	75.2	77.8	77.5	78.3	72.8	84.6			
120	47.6	102	108	105	98.9	106	109	104	47.3	84.9	65.8	66.6	66.1	66.9	63.6	82.4			
125	45.0	90.5	98.0	94.9	88.8	96.4	98.9	92.7	43.7	80.4	58.2	57.4	57.1	57.8	56.8	79.7			
130	39.3	79.1	87.6	84.5	79.3	85.8	88.3	81.0	39.9	70.4	52.3	50.2	49.7	50.5	51.9	71.6			
135	36.3	68.5	77.1	74.3	70.2	75.2	77.8	69.9	38.2	59.0	49.8	44.5	43.4	44.9	50.0	61.4			
140	35.8	57.9	66.9	64.5	61.3	65.1	67.6	59.0	36.7	50.3	50.0	40.4	38.1	40.5	48.7	51.9			
145	32.9	48.8	57.0	55.2	52.8	55.9	57.4	48.7	33.6	41.6	46.3	38.6	34.6	38.0	44.3	42.5			
150	28.9	40.9	47.5	46.6	45.4	47.2	47.6	40.2	30.1	32.4	38.7	36.2	33.0	35.3	38.6	34.4			
155	26.1	34.2	38.8	39.0	38.4	39.2	38.7	33.0	25.5	24.8	31.2	31.4	29.8	30.7	32.4	30.1			
160	22.9	28.4	31.4	32.1	32.2	32.2	31.2	27.3	21.9	19.9	24.6	26.1	25.4	25.9	26.6	25.4			
165	18.5	23.0	25.2	26.6	27.1	26.7	25.1	22.6	18.4	17.6	18.5	20.4	21.2	22.2	22.1	21.1			
170	13.1	14.1	20.3	21.5	21.7	20.9	18.0	13.8	12.5	12.4	11.8	14.9	17.2	18.0	18.0	17.4			
175	10.5	10.8	13.1	16.6	16.3	12.0	11.1	10.5	9.80	9.85	9.24	9.64	10.6	14.0	15.0	12.8			
180	12.8	12.5	10.1	5.91	0.00	2.58	10.1	12.2	11.1	11.2	11.2	9.89	7.32	5.26	6.81	10.1			

C Range: 0 - 360DEG
 C Interval: 22.5DEG
 Test Speed: 10.0deg/s
 Temperature:25.2DEG
 Operators:Monkey

γ Range: 0 - 180DEG
 γ Interval: 1.0DEG
 Test System:EVERFINE GO-R5000_V2 SYSTEM V2.0.351
 Humidity:45%
 Test Distance:2.447m [K=1.0000]
 Remarks: