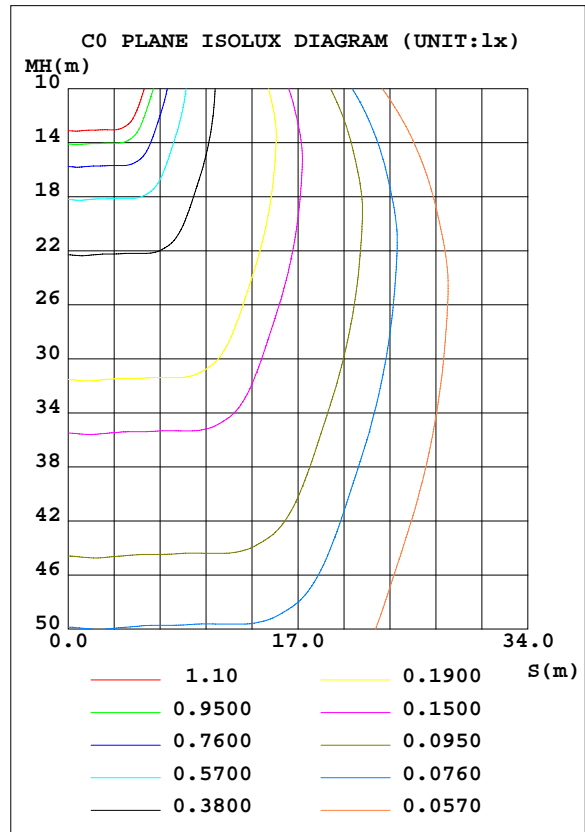
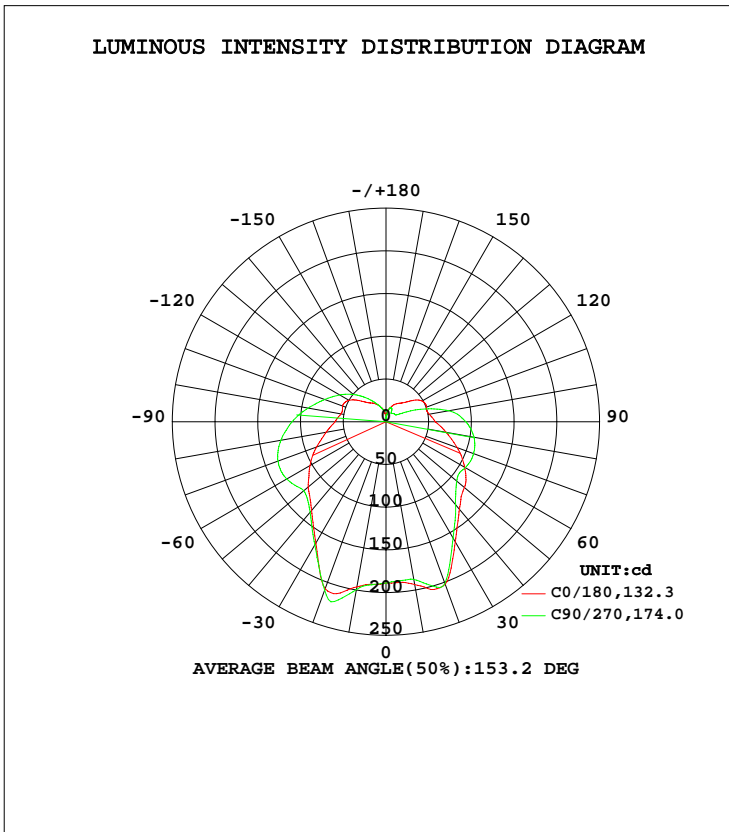


LUMINAIRE PHOTOMETRIC TEST REPORT

Test:U:120.0V I:0.1231A P:14.40W PF:0.9749 Lamp Flux:1127.82x1 lm		
NAME: 4902BN-2	TYPE:N/A	WEIGHT:N/A
SPEC.:N/A	DIM.: N/A	SERIAL No.:N/A
MFR.:	SUR.:N/A	Shielding Angle:N/A

DATA OF LAMP		PHOTOMETRIC DATA			
MODEL	PSZ2C171010002	Imax(cd)	227.1	S/MH(C0/180)	1.25
NOMINAL POWER(W)	15	LOR(%)	100.0	S/MH(C90/270)	1.23
RATED VOLTAGE(V)	120	TOTAL FLUX(lm)	1127.8	η UP, DN(C0-180)	16.5, 37.6
NOMINAL FLUX(lm)	1127.82	CIE CLASS	SEMI-D.	η UP, DN(C180-360)	11.5, 34.5
LAMPS INSIDE	1	η up(%)	27.9	CIBSE SHR NOM	1.50
TEST VOLTAGE(V)	120	η down(%)	72.1	CIBSE SHR MAX	1.50



C Range: 0 - 360DEG
 C Interval: 22.5DEG
 Test Speed: 10.0deg/s
 Temperature:25.2DEG
 Operators:monkey

γ Range: 0 - 180DEG
 γ Interval: 1.0DEG
 Test System:EVERFINE GO-R5000_V2 SYSTEM V2.0.351
 Humidity:45%
 Test Distance:2.447m [K=1.0000]
 Remarks:

ZONAL FLUX DIAGRAM

ZONAL FLUX DIAGRAM:

γ	C0	C45	C90	C135	C180	C225	C270	C315	γ	Φ zone	Φ total	%lum,lamp
10	196.3	195.9	199.4	194.1	193.4	186.6	187.5	189.1	0- 10	18.18	18.18	1.61,1.61
20	208.1	223.9	209.8	221.5	202.5	204.9	201.6	207.2	10- 20	57.66	75.83	6.72,6.72
30	164.2	193.3	166.5	191.8	162.2	183.3	157.1	191.6	20- 30	89.46	165.3	14.7,14.7
40	135.6	157.6	138.3	156.6	133.9	147.1	126.9	150.0	30- 40	98.00	263.3	23.3,23.3
50	119.0	130.4	125.8	130.1	119.8	119.7	108.2	121.2	40- 50	100.9	364.2	32.3,32.3
60	102.8	124.0	134.2	124.6	106.2	108.3	107.3	107.4	50- 60	105.6	469.8	41.7,41.7
70	86.50	125.4	134.4	126.5	88.78	109.9	109.1	108.3	60- 70	114.8	584.5	51.8,51.8
80	71.13	119.2	124.9	120.4	71.52	106.8	104.6	105.3	70- 80	117.4	702.0	62.2,62.2
90	59.81	107.7	109.9	108.8	57.82	96.57	93.48	95.47	80- 90	110.7	812.6	72.1,72.1
100	53.66	94.39	92.65	95.12	51.48	73.79	74.67	73.93	90-100	96.12	908.8	80.6,80.6
110	54.11	80.17	76.39	80.37	50.41	34.76	43.12	35.19	100-110	71.57	980.3	86.9,86.9
120	50.24	65.10	62.85	65.50	48.75	24.52	18.39	25.18	110-120	52.56	1033	91.6,91.6
130	37.74	50.35	49.78	50.99	38.18	25.06	13.64	25.61	120-130	37.70	1071	94.9,94.9
140	28.96	37.35	36.79	38.07	28.76	23.44	12.91	21.80	130-140	25.67	1096	97.2,97.2
150	24.38	26.17	25.98	26.84	24.34	25.32	12.35	19.81	140-150	16.43	1113	98.7,98.7
160	18.84	17.86	18.09	18.28	19.00	20.06	17.57	16.32	150-160	9.721	1122	99.5,99.5
170	11.59	13.85	13.62	13.99	13.26	11.64	9.383	8.275	160-170	4.489	1127	99.9,99.9
180	7.164	9.627	12.35	6.187	7.547	7.824	9.255	7.132	170-180	0.9355	1128	100,100
DEG	LUMINOUS INTENSITY:cd Less than 25% Percent = 41.7 %									UNIT:lm		

Conical surface Flux(90deg): 313.51 lm

%lum = 27.8%
 %lamp = 27.8%

Conical surface Flux(120deg): 469.77 lm

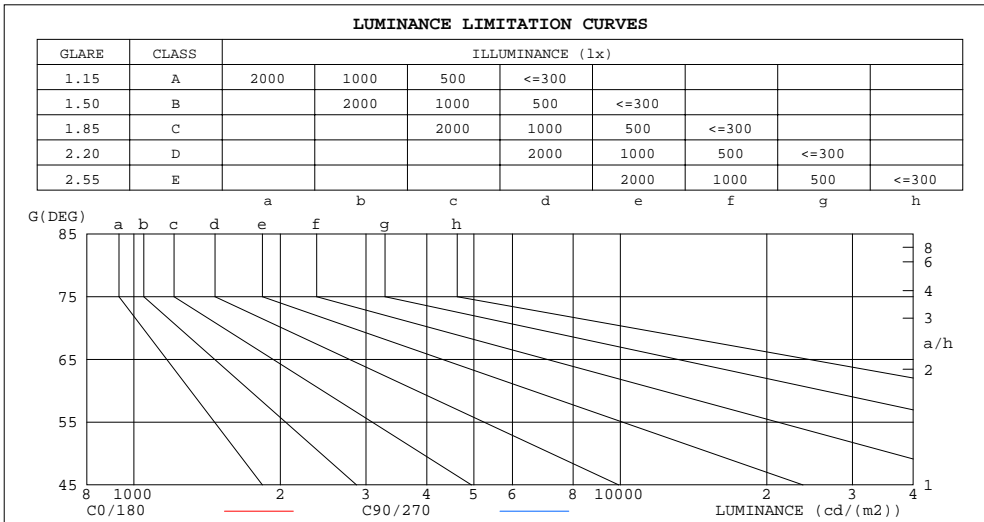
%lum = 41.7%
 %lamp = 41.7%

C Range: 0 - 360DEG
 C Interval: 22.5DEG
 Test Speed: 10.0deg/s
 Temperature:25.2DEG
 Operators:monkey

γ Range: 0 - 180DEG
 γ Interval: 1.0DEG
 Test System:EVERFINE GO-R5000_V2 SYSTEM V2.0.351
 Humidity:45%
 Test Distance:2.447m [K=1.0000]
 Remarks:

LUMINANCE LIMITATION CURVES

Test:U:120.0V I:0.1231A P:14.40W PF:0.9749 Lamp Flux:1127.82x1 lm		
NAME: 4902BN-2	TYPE:N/A	WEIGHT:N/A
SPEC.:N/A	DIM.: N/A	SERIAL No.:N/A
MFR.:	SUR.:N/A	Shielding Angle:N/A



LUMINANCE cd/(m2)		
G(DEG)	C0/180	C90/270
85	7449411	13468430
80	4097326	7191473
75	3016135	5054315
70	2529863	3928132
65	2248359	3212243
60	2055641	2683423
55	1920698	2265149
50	1851651	1957133
45	1780090	1834060

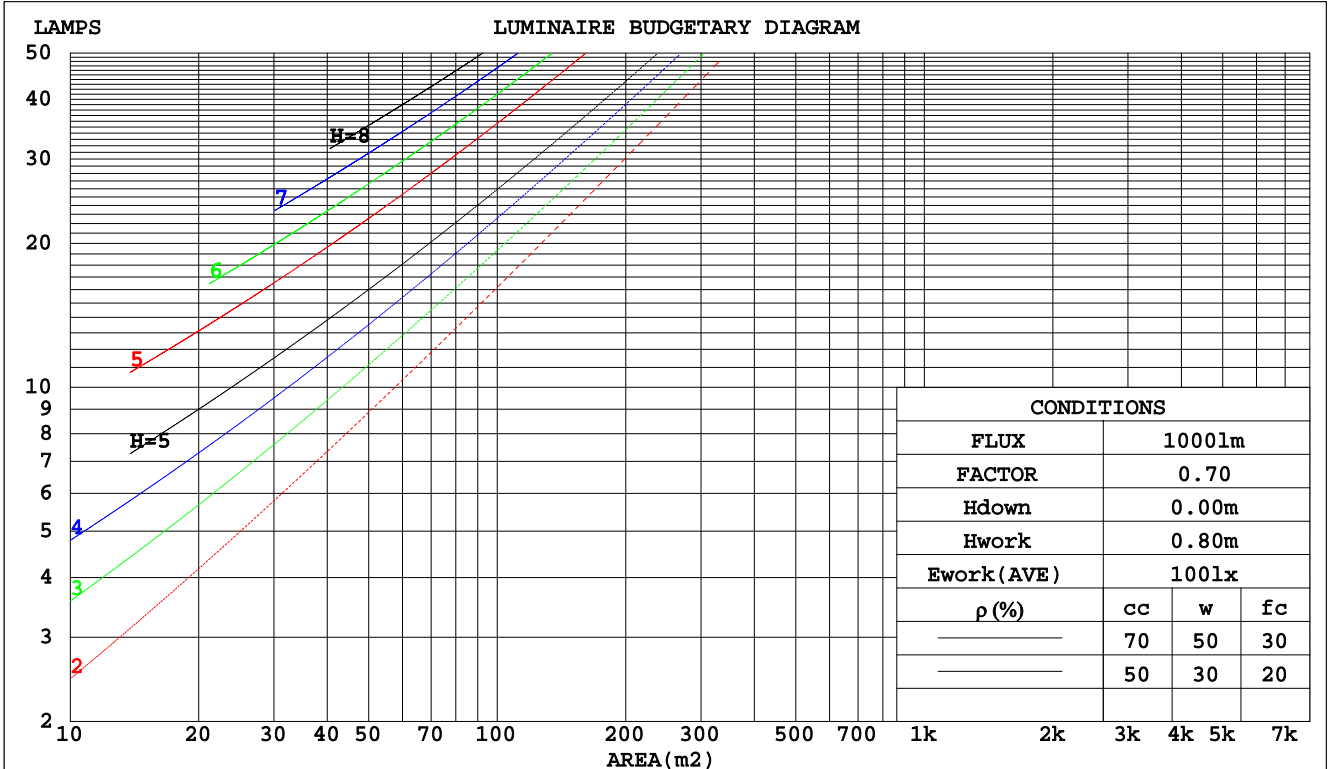
C Range: 0 - 360DEG
 C Interval: 22.5DEG
 Test Speed: 10.0deg/s
 Temperature:25.2DEG
 Operators:monkey

γ Range: 0 - 180DEG
 γ Interval: 1.0DEG
 Test System:EVERFINE GO-R5000_V2 SYSTEM V2.0.351
 Humidity:45%
 Test Distance:2.447m [K=1.0000]
 Remarks:

CU AND LUMINAIRE BUDGETARY ESTIMATE DIAGRAM

Test:U:120.0V I:0.1231A P:14.40W PF:0.9749 Lamp Flux:1127.82x1 lm		
NAME: 4902BN-2	TYPE:N/A	WEIGHT:N/A
SPEC.:N/A	DIM.: N/A	SERIAL No.:N/A
MFR.:	SUR.:N/A	Shielding Angle:N/A

pcc	80%			70%			50%			30%			10%			0
	50%	30%	10%	50%	30%	10%	50%	30%	10%	50%	30%	10%	50%	30%	10%	0
pw																
pfc	20%			20%			20%			20%			20%			0
RCR	RCR:Room Cavity Ratio															
	Coefficients of Utilization(CU)															
0.0	1.12	1.12	1.12	1.07	1.07	1.07	.96	.96	.96	.86	.86	.86	.76	.76	.76	.72
1.0	.92	.86	.81	.87	.82	.77	.77	.73	.69	.69	.65	.62	.60	.58	.56	.51
2.0	.78	.70	.63	.74	.66	.60	.66	.60	.54	.58	.53	.49	.51	.47	.44	.40
3.0	.68	.58	.51	.64	.56	.49	.57	.50	.44	.50	.45	.40	.44	.40	.36	.32
4.0	.59	.50	.42	.56	.47	.41	.50	.43	.37	.44	.38	.34	.39	.34	.30	.27
5.0	.53	.43	.36	.50	.41	.35	.45	.37	.32	.40	.34	.29	.35	.30	.26	.23
6.0	.47	.38	.31	.45	.36	.30	.40	.33	.27	.36	.30	.25	.32	.27	.23	.20
7.0	.43	.34	.27	.40	.32	.26	.36	.29	.24	.32	.26	.22	.29	.24	.20	.18
8.0	.39	.30	.24	.37	.29	.23	.33	.26	.21	.30	.24	.20	.27	.22	.18	.16
9.0	.35	.27	.21	.34	.26	.21	.30	.24	.19	.27	.22	.18	.25	.20	.16	.14
10.0	.33	.25	.19	.31	.24	.19	.28	.22	.17	.25	.20	.16	.23	.18	.15	.13



C Range: 0 - 360DEG
 C Interval: 22.5DEG
 Test Speed: 10.0deg/s
 Temperature:25.2DEG
 Operators:monkey

γ Range: 0 - 180DEG
 γ Interval: 1.0DEG
 Test System:EVERFINE GO-R5000_V2 SYSTEM V2.0.351
 Humidity:45%
 Test Distance:2.447m [K=1.0000]
 Remarks:

WEC AND CCEC

Test:U:120.0V I:0.1231A P:14.40W PF:0.9749 Lamp Flux:1127.82x1 lm		
NAME: 4902BN-2	TYPE:N/A	WEIGHT:N/A
SPEC.:N/A	DIM.: N/A	SERIAL No.:N/A
MFR.:	SUR.:N/A	Shielding Angle:N/A

ρcc	80%			70%			50%			30%			10%			0
ρw	50%	30%	10%	50%	30%	10%	50%	30%	10%	50%	30%	10%	50%	30%	10%	0
ρfc	20%			20%			20%			20%			20%			0
RCR	RCR:Room Cavity Ratio						Wall Exitance Coefficients(WEC)									
0.0																
1.0	.412	.234	.074	.396	.226	.072	.367	.210	.067	.340	.196	.063	.315	.182	.059	
2.0	.346	.189	.058	.331	.182	.056	.304	.169	.053	.280	.157	.049	.257	.145	.046	
3.0	.302	.161	.048	.289	.155	.047	.265	.143	.044	.242	.133	.041	.221	.122	.038	
4.0	.269	.140	.041	.257	.135	.040	.235	.125	.037	.214	.115	.035	.195	.106	.032	
5.0	.243	.124	.036	.232	.119	.035	.212	.110	.032	.193	.102	.030	.175	.094	.028	
6.0	.221	.111	.032	.212	.107	.031	.193	.099	.029	.176	.091	.027	.159	.084	.025	
7.0	.204	.101	.029	.195	.097	.028	.177	.090	.026	.161	.083	.024	.146	.076	.022	
8.0	.188	.092	.026	.180	.089	.025	.164	.082	.023	.149	.076	.022	.136	.070	.020	
9.0	.175	.085	.024	.168	.082	.023	.153	.076	.021	.139	.070	.020	.126	.064	.019	
10.0	.164	.079	.022	.157	.076	.021	.143	.070	.020	.130	.065	.018	.118	.059	.017	

ρcc	80%			70%			50%			30%			10%			0
ρw	50%	30%	10%	50%	30%	10%	50%	30%	10%	50%	30%	10%	50%	30%	10%	0
ρfc	20%			20%			20%			20%			20%			0
RCR	RCR:Room Cavity Ratio						Ceiling Cavity Exitance Coefficients(CCEC)									
0.0	.403	.403	.403	.345	.345	.345	.235	.235	.235	.135	.135	.135	.043	.043	.043	
1.0	.402	.370	.341	.344	.317	.293	.235	.218	.203	.135	.126	.118	.043	.041	.038	
2.0	.396	.348	.308	.339	.299	.266	.232	.207	.185	.134	.120	.109	.043	.039	.035	
3.0	.388	.332	.287	.333	.286	.249	.228	.199	.175	.132	.116	.103	.042	.038	.034	
4.0	.380	.320	.274	.326	.276	.238	.224	.192	.167	.130	.113	.099	.042	.037	.033	
5.0	.372	.310	.264	.320	.268	.230	.220	.187	.162	.128	.110	.096	.041	.036	.032	
6.0	.365	.302	.258	.313	.262	.224	.216	.183	.159	.125	.108	.094	.040	.035	.031	
7.0	.357	.296	.253	.307	.256	.220	.212	.180	.156	.123	.106	.093	.040	.035	.031	
8.0	.351	.290	.249	.302	.252	.217	.209	.177	.154	.122	.104	.092	.039	.034	.030	
9.0	.344	.286	.246	.297	.248	.215	.206	.174	.152	.120	.103	.091	.039	.034	.030	
10.0	.339	.282	.244	.292	.245	.213	.202	.172	.151	.118	.102	.090	.038	.033	.030	

C Range: 0 - 360DEG
 C Interval: 22.5DEG
 Test Speed: 10.0deg/s
 Temperature:25.2DEG
 Operators:monkey

γ Range: 0 - 180DEG
 γ Interval: 1.0DEG
 Test System:EVERFINE GO-R5000_V2 SYSTEM V2.0.351
 Humidity:45%
 Test Distance:2.447m [K=1.0000]
 Remarks:

UGR(Unified Glare Rating) Table

Test:U:120.0V I:0.1231A P:14.40W PF:0.9749 Lamp Flux:1127.82x1 lm										
NAME:4902BN-2					TYPE:N/A			WEIGHT:N/A		
SPEC.:N/A					DIM.: N/A			SERIAL No.:N/A		
MFR.:					SUR.:N/A			Shielding Angle:N/A		
ceiling/cavity	0.7	0.7	0.5	0.5	0.3	0.7	0.7	0.5	0.5	0.3
walls	0.5	0.3	0.5	0.3	0.3	0.5	0.3	0.5	0.3	0.3
working plane	0.2	0.2	0.2	0.2	0.2	0.2	0.2	0.2	0.2	0.2
Room dimensions	Viewed crosswise					Viewed endwise				
x = 2H y = 2H	37.3	38.6	37.9	39.2	40.0	38.2	39.5	38.9	40.2	40.9
3H	39.9	41.0	40.5	41.7	42.5	41.5	42.7	42.1	43.3	44.1
4H	41.2	42.3	41.9	43.0	43.8	43.3	44.4	43.9	45.1	45.9
6H	42.6	43.7	43.3	44.4	45.2	45.1	46.2	45.8	46.9	47.7
8H	43.4	44.4	44.1	45.2	46.0	46.2	47.2	46.9	47.9	48.8
12H	44.3	45.3	45.0	46.0	46.9	47.3	48.3	48.0	49.0	49.9
4H 2H	38.5	39.6	39.2	40.3	41.1	39.1	40.2	39.8	40.9	41.8
3H	41.3	42.3	42.0	43.0	43.9	42.6	43.6	43.3	44.3	45.1
4H	42.9	43.8	43.6	44.5	45.4	44.5	45.4	45.2	46.1	47.0
6H	44.5	45.3	45.2	46.1	47.0	46.6	47.4	47.3	48.1	49.1
8H	45.3	46.1	46.1	46.9	47.8	47.7	48.4	48.5	49.2	50.2
12H	46.3	47.0	47.1	47.8	48.8	48.9	49.6	49.7	50.4	51.4
8H 4H	43.9	44.6	44.6	45.4	46.4	45.1	45.9	45.9	46.6	47.6
6H	45.8	46.5	46.6	47.3	48.3	47.5	48.1	48.3	48.9	49.9
8H	46.9	47.5	47.7	48.3	49.3	48.8	49.4	49.6	50.2	51.2
12H	48.1	48.6	49.0	49.5	50.5	50.3	50.8	51.1	51.6	52.7
12H 4H	44.2	44.9	44.9	45.7	46.6	45.2	45.9	46.0	46.7	47.7
6H	46.3	46.9	47.1	47.7	48.7	47.7	48.3	48.5	49.1	50.1
8H	47.6	48.1	48.4	48.9	49.9	49.2	49.7	50.0	50.5	51.5
Variations with the observer position at spacings:										
S = 1.0H	+ 0.1 / - 0.1					+ 0.1 / - 0.1				
1.5H	+ 0.2 / - 0.3					+ 0.2 / - 0.3				
2.0H	+ 0.3 / - 0.4					+ 0.3 / - 0.4				

CIE Pub.117 Corrected 1128 lm Total Lamp Luminous Flux.(8log(F/F0) = 0.4)

C Range: 0 - 360DEG
 C Interval: 22.5DEG
 Test Speed: 10.0deg/s
 Temperature:25.2DEG
 Operators:monkey

γ Range: 0 - 180DEG
 γ Interval: 1.0DEG
 Test System:EVERFINE GO-R5000_V2 SYSTEM V2.0.351
 Humidity:45%
 Test Distance:2.447m [K=1.0000]
 Remarks:

UTILIZATION FACTORS TABLE

Test:U:120.0V I:0.1231A P:14.40W PF:0.9749 Lamp Flux:1127.82x1 lm		
NAME:4902BN-2	TYPE:N/A	WEIGHT:N/A
SPEC.:N/A	DIM.: N/A	SERIAL No.:N/A
MFR.:	SUR.:N/A	Shielding Angle:N/A

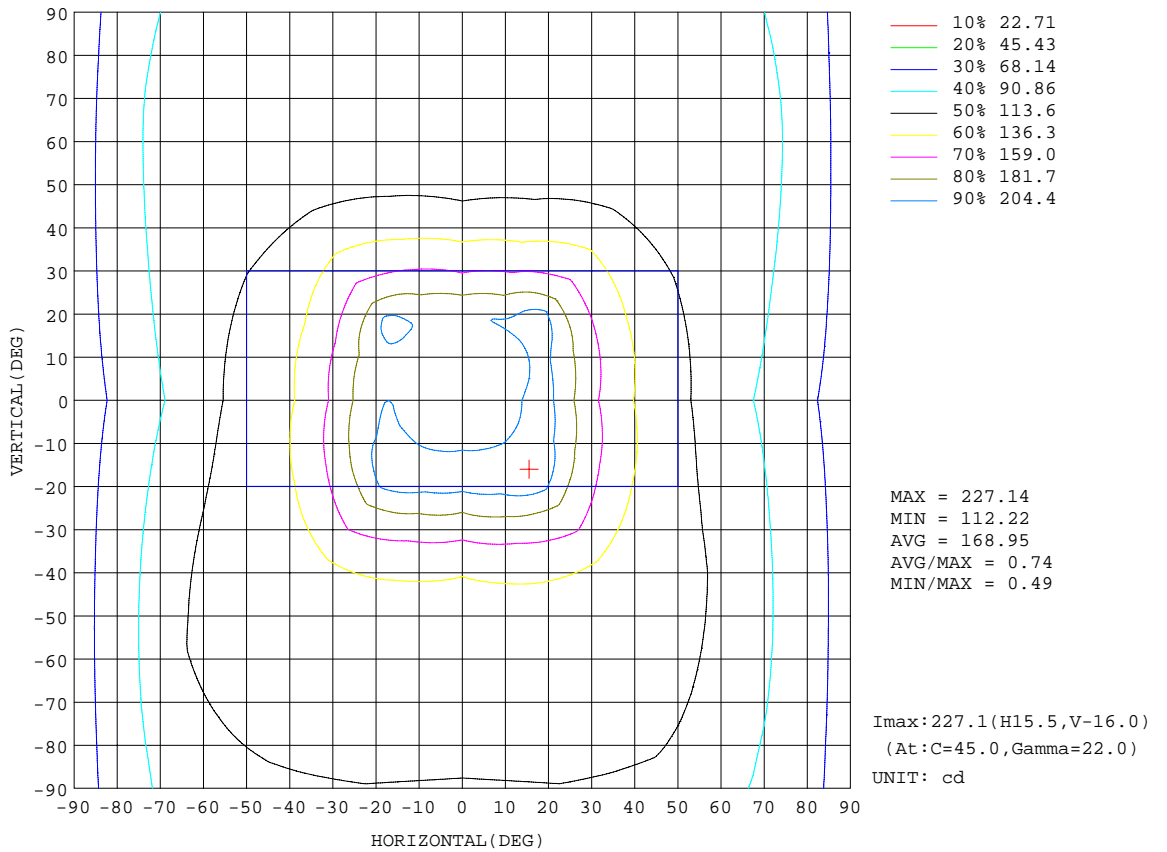
REFLECTANCE										
Ceiling	0.8	0.8	0.8	0.7	0.7	0.7	0.5	0.5	0.5	0
Walls	0.7	0.5	0.3	0.7	0.5	0.3	0.7	0.5	0.3	0
Working plane	0.2	0.2	0.2	0.2	0.2	0.2	0.2	0.2	0.2	0
ROOM INDEX	UTILIZATION FACTORS(PERCENT) $k(RI) \times RCR = 5$									
k = 0.60	45	32	25	43	32	25	41	30	24	17
0.80	53	40	32	51	39	31	48	37	30	22
1.00	60	47	38	58	45	37	54	45	36	26
1.25	67	53	44	64	52	43	59	49	41	30
1.50	72	59	50	69	57	48	63	53	46	34
2.00	79	67	58	75	64	56	68	60	53	39
2.50	84	73	64	80	70	62	72	64	57	42
3.00	88	77	69	83	74	66	75	68	62	46
4.00	93	84	76	88	80	73	79	73	67	50
5.00	96	88	81	91	84	78	82	76	71	53
ROOM INDEX	UF(total)									Direct
According to DIN EN 13032-2 2004			Suspended				SHRNOM = 1.25			

C Range: 0 - 360DEG
 C Interval: 22.5DEG
 Test Speed: 10.0deg/s
 Temperature:25.2DEG
 Operators:monkey

γ Range: 0 - 180DEG
 γ Interval: 1.0DEG
 Test System:EVERFINE GO-R5000_V2 SYSTEM V2.0.351
 Humidity:45%
 Test Distance:2.447m [K=1.0000]
 Remarks:

ISOCANDELA DIAGRAM

Test:U:120.0V I:0.1231A P:14.40W PF:0.9749 Lamp Flux:1127.82x1 lm		
NAME:4902BN-2	TYPE:N/A	WEIGHT:N/A
SPEC.:N/A	DIM.: N/A	SERIAL No.:N/A
MFR.:	SUR.:N/A	Shielding Angle:N/A

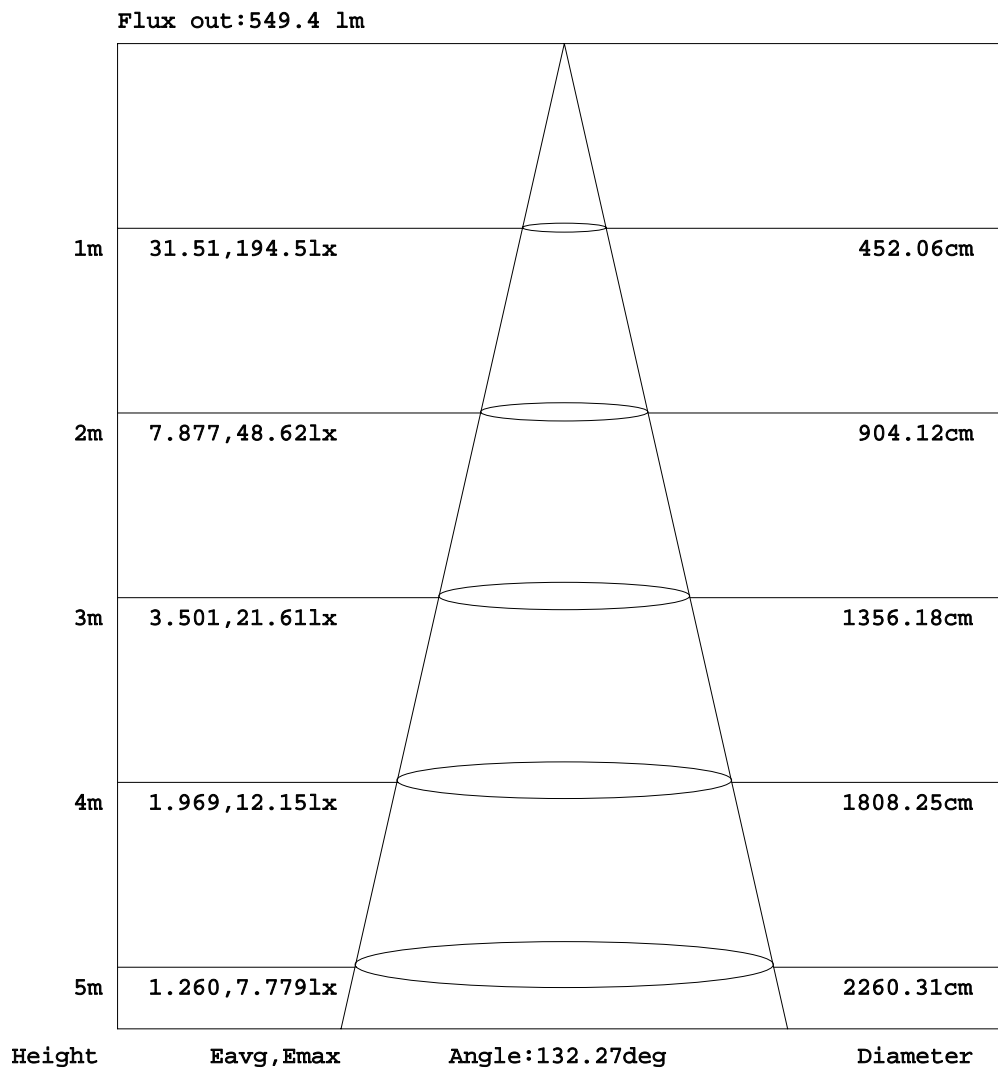


C Range: 0 - 360DEG
 C Interval: 22.5DEG
 Test Speed: 10.0deg/s
 Temperature: 25.2DEG
 Operators: monkey

γ Range: 0 - 180DEG
 γ Interval: 1.0DEG
 Test System: EVERFINE GO-R5000_V2 SYSTEM V2.0.351
 Humidity: 45%
 Test Distance: 2.447m [K=1.0000]
 Remarks:

AAI Figure

Test:U:120.0V I:0.1231A P:14.40W PF:0.9749 Lamp Flux:1127.82x1 lm		
NAME:4902BN-2	TYPE:N/A	WEIGHT:N/A
SPEC.:N/A	DIM.: N/A	SERIAL No.:N/A
MFR.:	SUR.:N/A	Shielding Angle:N/A



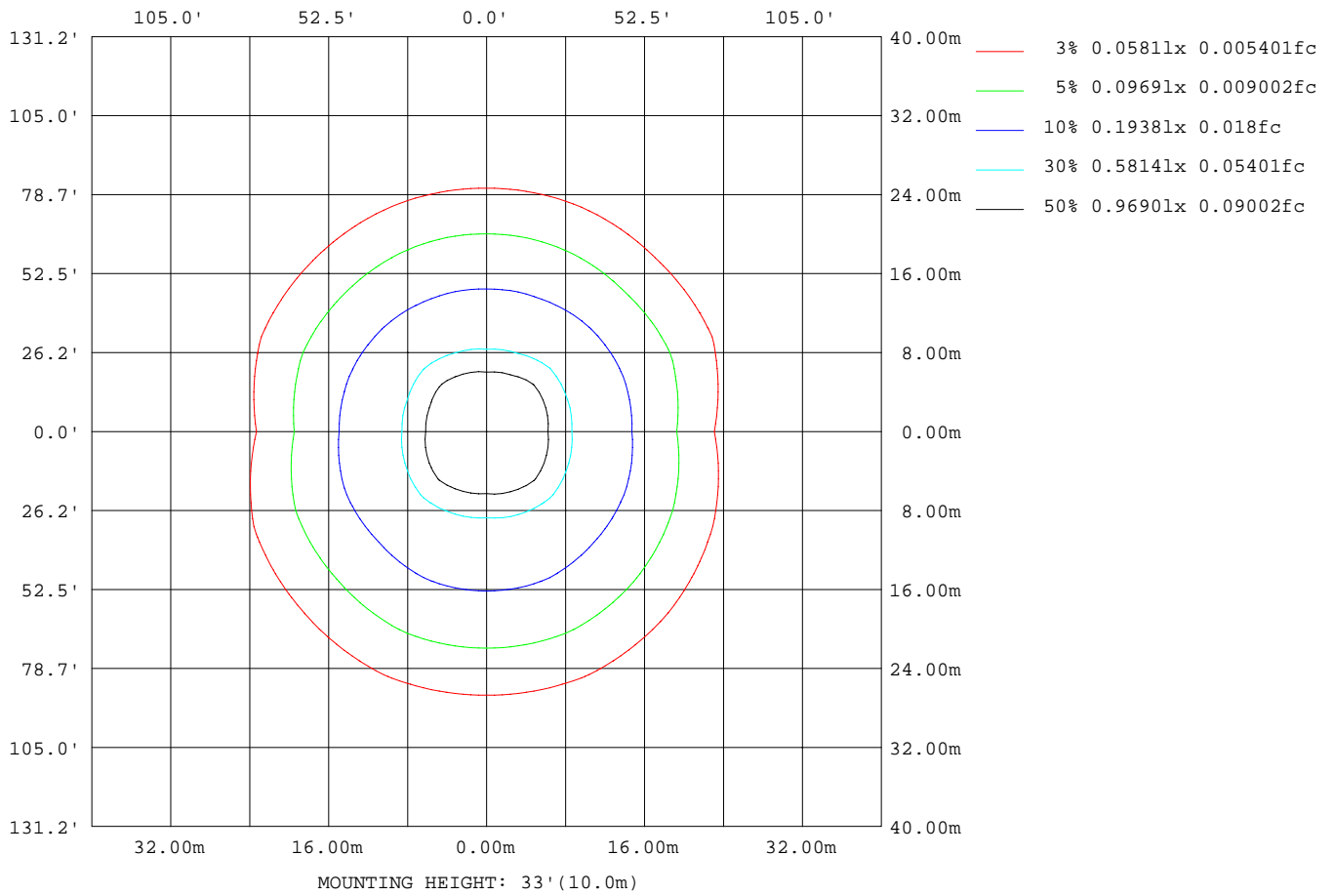
Note:The Curves indicate the illuminated area and the average illumination when the luminaire is at different distance.

C Range: 0 - 360DEG
 C Interval: 22.5DEG
 Test Speed: 10.0deg/s
 Temperature:25.2DEG
 Operators:monkey

γ Range: 0 - 180DEG
 γ Interval: 1.0DEG
 Test System:EVERFINE GO-R5000_V2 SYSTEM V2.0.351
 Humidity:45%
 Test Distance:2.447m [K=1.0000]
 Remarks:

ISOLUX DIAGRAM

Test:U:120.0V I:0.1231A P:14.40W PF:0.9749 Lamp Flux:1127.82x1 lm		
NAME:4902BN-2	TYPE:N/A	WEIGHT:N/A
SPEC.:N/A	DIM.: N/A	SERIAL No.:N/A
MFR.:	SUR.:N/A	Shielding Angle:N/A



C Range: 0 - 360DEG
 C Interval: 22.5DEG
 Test Speed: 10.0deg/s
 Temperature:25.2DEG
 Operators:monkey

γ Range: 0 - 180DEG
 γ Interval: 1.0DEG
 Test System:EVERFINE GO-R5000_V2 SYSTEM V2.0.351
 Humidity:45%
 Test Distance:2.447m [K=1.0000]
 Remarks:

LED Avg.L Report

Test:U:120.0V I:0.1231A P:14.40W PF:0.9749 Lamp Flux:1127.82x1 lm		
NAME: 4902BN-2	TYPE:N/A	WEIGHT:N/A
SPEC.:N/A	DIM.: N/A	SERIAL No.:N/A
MFR.:	SUR.:N/A	Shielding Angle:N/A

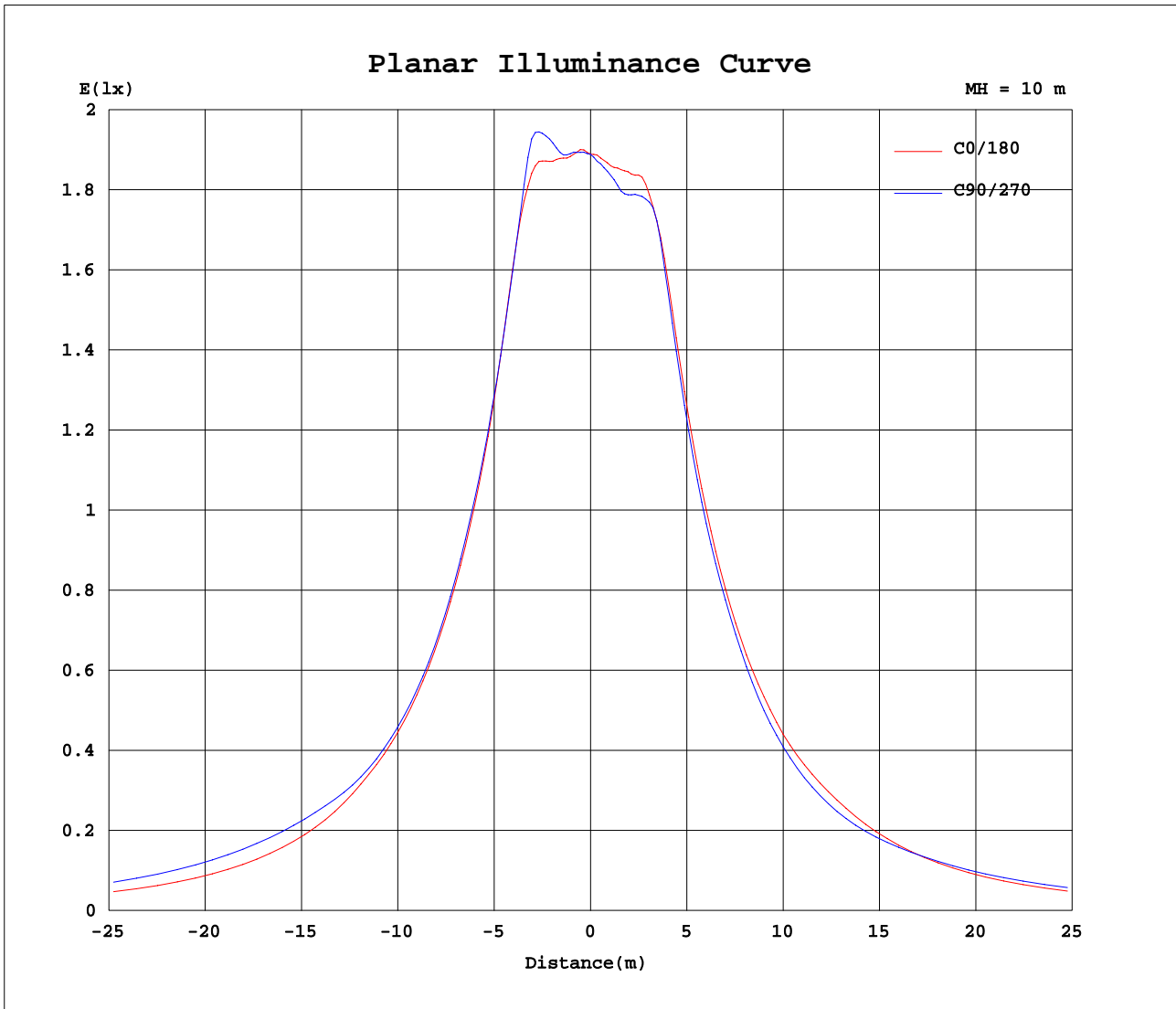
AvgL	cd/m2
L_0~180(65)av	2281583
L_0~180(75)av	3044710
L_0~180(85)av	7412536
L_90~270(65)av	2898819
L_90~270(75)av	4609359
L_90~270(85)av	12467729
L_45(65)av	2775221
L_45(75)av	4485692
L_45(85)av	12395967

Standard: GB/T 29293-2012

C Range: 0 - 360DEG
 C Interval: 22.5DEG
 Test Speed: 10.0deg/s
 Temperature:25.2DEG
 Operators:monkey

γ Range: 0 - 180DEG
 γ Interval: 1.0DEG
 Test System:EVERFINE GO-R5000_V2 SYSTEM V2.0.351
 Humidity:45%
 Test Distance:2.447m [K=1.0000]
 Remarks:

Planar Illuminance Curve



C Range: 0 - 360DEG
 C Interval: 22.5DEG
 Test Speed: 10.0deg/s
 Temperature: 25.2DEG
 Operators: monkey

γ Range: 0 - 180DEG
 γ Interval: 1.0DEG
 Test System: EVERFINE GO-R5000_V2 SYSTEM V2.0.351
 Humidity: 45%
 Test Distance: 2.447m [K=1.0000]
 Remarks:

LUMINOUS DISTRIBUTION INTENSITY DATA

Test:U:120.0V I:0.1231A P:14.40W PF:0.9749 Lamp Flux:1127.82x1 lm		
NAME: 4902BN-2	TYPE:N/A	WEIGHT:N/A
SPEC.:N/A	DIM.: N/A	SERIAL No.:N/A
MFR.:	SUR.:N/A	Shielding Angle:N/A

Table--1

UNIT: cd

C(DEG) γ (DEG)	0	22.5	45	67.5	90	112.5	135	157.5	180	202.5	225	247.5	270	292.5	315	337.5			
0	189	189	189	189	189	189	189	189	189	189	189	189	189	189	189	189			
5	191	191	192	191	192	191	190	190	189	188	186	186	187	187	189	190			
10	196	197	196	198	199	197	194	195	193	190	187	186	187	188	189	193			
15	208	207	207	213	216	211	206	204	203	198	192	194	198	196	194	201			
20	208	211	224	218	210	216	222	206	202	200	205	203	202	205	207	207			
25	186	196	221	197	186	195	217	195	183	186	210	186	179	187	217	195			
30	164	176	193	177	167	175	192	176	162	166	183	167	157	165	192	174			
35	148	158	173	160	151	158	172	158	146	150	162	150	141	148	166	156			
40	136	144	158	146	138	145	157	143	134	136	147	135	127	133	150	141			
45	126	133	142	136	130	135	141	132	124	126	133	122	116	120	135	130			
50	119	125	130	129	126	129	130	126	120	118	120	113	108	112	121	120			
55	110	119	124	129	130	129	124	123	114	114	112	107	105	106	112	113			
60	103	116	124	134	134	134	125	122	106	112	108	107	107	107	107	111			
65	95.0	114	126	136	136	136	127	121	97.9	111	109	110	109	109	108	111			
70	86.5	110	125	135	134	135	126	119	88.8	110	110	110	109	110	108	111			
75	78.0	105	123	132	131	132	124	115	79.6	108	109	109	108	109	108	109			
80	71.1	100	119	126	125	127	120	110	71.5	106	107	107	105	106	105	107			
85	64.9	95.0	113	119	117	119	115	105	64.3	102	103	103	99.9	102	101	102			
90	59.8	89.9	108	112	110	112	109	98.8	57.8	94.8	96.6	96.7	93.5	96.0	95.5	94.9			
95	56.7	85.3	101	104	102	104	102	93.5	54.7	88.8	89.0	89.3	86.0	88.5	87.7	87.8			
100	53.7	81.6	94.4	95.7	92.6	95.6	95.1	88.2	51.5	61.3	73.8	78.0	74.7	77.4	73.9	61.6			
105	52.8	78.2	87.3	87.5	84.0	87.3	87.7	82.9	49.6	39.7	54.8	62.9	58.3	63.2	55.8	38.3			
110	54.1	72.5	80.2	79.5	76.4	79.1	80.4	76.3	50.4	51.2	34.8	46.6	43.1	47.3	35.2	48.1			
115	53.4	65.9	72.8	72.3	69.4	71.9	73.0	69.0	50.7	53.7	25.0	30.4	28.8	30.3	25.2	50.8			
120	50.2	58.6	65.1	65.2	62.9	64.6	65.5	61.3	48.7	49.5	24.5	20.7	18.4	20.5	25.2	47.2			
125	44.7	51.0	57.7	58.1	56.3	57.6	58.2	53.3	44.5	44.1	25.3	18.9	14.2	19.4	26.0	41.5			
130	37.7	44.2	50.3	50.9	49.8	50.5	51.0	46.0	38.2	37.8	25.1	19.3	13.6	19.8	25.6	35.9			
135	32.2	38.0	43.6	44.2	43.2	43.9	44.4	39.7	32.6	33.4	24.0	19.2	13.5	19.3	24.0	32.2			
140	29.0	32.6	37.3	37.7	36.8	37.7	38.1	34.0	28.8	30.8	23.4	18.0	12.9	17.5	21.8	30.2			
145	26.7	27.8	31.4	31.7	30.9	31.8	32.2	28.8	26.5	29.2	24.9	16.5	11.9	15.2	21.2	28.3			
150	24.4	24.0	26.2	26.5	26.0	26.6	26.8	24.5	24.3	26.7	25.3	16.6	12.4	15.3	19.8	26.5			
155	21.7	20.8	21.6	21.8	21.8	22.0	22.2	21.2	21.9	23.5	24.0	18.5	16.5	17.9	18.1	22.1			
160	18.8	18.1	17.9	18.0	18.1	18.1	18.3	18.5	19.0	19.7	20.1	16.3	17.6	19.1	16.3	18.0			
165	15.8	16.0	15.5	14.9	15.0	15.0	15.7	16.3	16.4	16.5	16.0	14.5	16.2	17.2	15.3	14.1			
170	11.6	13.9	13.9	13.6	13.6	13.7	14.0	14.5	13.3	13.1	11.6	8.98	9.38	9.40	8.27	8.78			
175	8.28	11.0	12.7	13.0	13.1	13.1	12.5	9.67	9.20	9.17	7.35	7.44	5.14	1.93	0.54	5.34			
180	7.16	9.00	9.63	8.73	12.3	6.61	6.19	6.59	7.55	7.57	7.82	9.86	9.25	6.72	7.13	6.27			

C Range: 0 - 360DEG
 C Interval: 22.5DEG
 Test Speed: 10.0deg/s
 Temperature:25.2DEG
 Operators:monkey

γ Range: 0 - 180DEG
 γ Interval: 1.0DEG
 Test System:EVERFINE GO-R5000_V2 SYSTEM V2.0.351
 Humidity:45%
 Test Distance:2.447m [K=1.0000]
 Remarks: