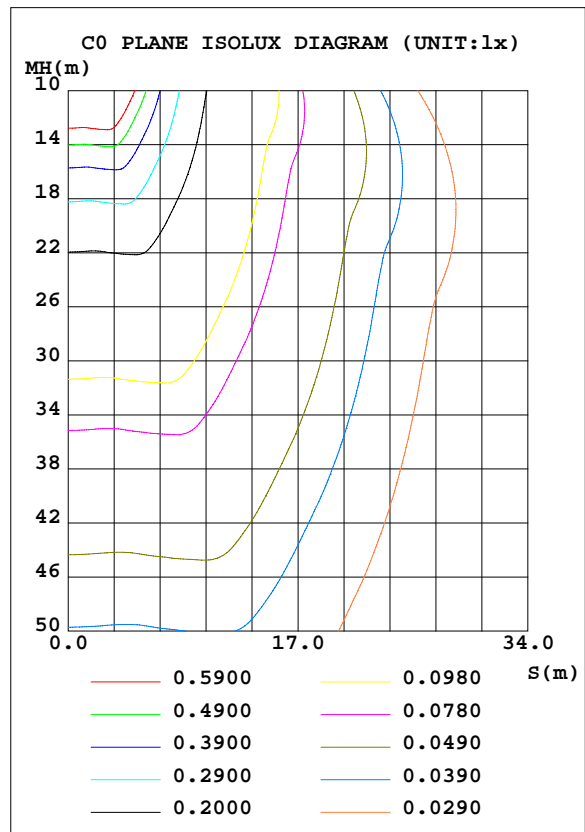
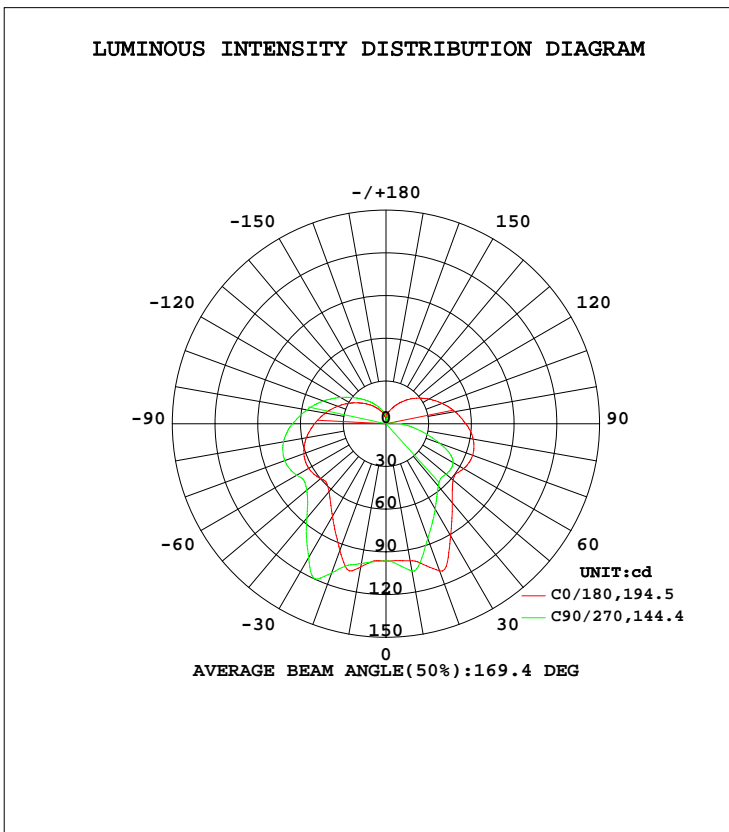


LUMINAIRE PHOTOMETRIC TEST REPORT

Test:U:120.0V I:0.0740A P:8.410W PF:0.9471 Lamp Flux:599.416x1 lm		
NAME: 4902-1	TYPE:N/A	WEIGHT:N/A
SPEC.:N/A	DIM.: N/A	SERIAL No.:N/A
MFR.:	SUR.:N/A	Shielding Angle:N/A

DATA OF LAMP		PHOTOMETRIC DATA			
MODEL	4902-1	Imax(cd)	127.3	S/MH(C0/180)	1.33
NOMINAL POWER(W)	8	LOR(%)	100.0	S/MH(C90/270)	1.09
RATED VOLTAGE(V)	120	TOTAL FLUX(lm)	599.42	η UP, DN(C0-180)	19.0,40.0
NOMINAL FLUX(lm)	599.416	CIE CLASS	SEMI-D.	η UP, DN(C180-360)	9.7,31.3
LAMPS INSIDE	1	η up(%)	28.7	CIBSE SHR NOM	1.50
TEST VOLTAGE(V)	120	η down(%)	71.3	CIBSE SHR MAX	1.50



C Range: 0 - 360DEG
 C Interval: 22.5DEG
 Test Speed: 10.0deg/s
 Temperature:25.2DEG
 Operators:monkey
 Test Date:

γ Range: 0 - 180DEG
 γ Interval: 1.0DEG
 Test System:EVERFINE GO-R5000_V2 SYSTEM V2.0.351
 Humidity:45%
 Test Distance:2.447m [K=1.0000]
 Remarks:

ZONAL FLUX DIAGRAM

ZONAL FLUX DIAGRAM:

γ	C0	C45	C90	C135	C180	C225	C270	C315	γ	Φ zone	Φ total	%lum,lamp
10	102.1	101.2	99.64	99.19	97.72	101.6	105.0	102.8	0- 10	9.424	9.424	1.57,1.57
20	94.78	110.8	111.4	106.4	109.9	104.4	85.88	98.44	10- 20	29.25	38.67	6.45,6.45
30	75.26	97.58	108.7	126.1	90.88	87.38	69.15	78.14	20- 30	45.47	84.15	14,14
40	62.31	81.63	86.47	100.8	72.45	70.89	57.20	63.06	30- 40	51.59	135.7	22.6,22.6
50	59.93	69.08	72.64	80.72	61.64	58.56	55.14	55.40	40- 50	52.65	188.4	31.4,31.4
60	62.66	66.76	72.36	69.36	63.02	56.59	54.46	56.05	50- 60	56.38	244.8	40.8,40.8
70	61.36	68.57	75.69	70.40	64.82	56.27	40.07	53.10	60- 70	62.20	307.0	51.2,51.2
80	56.80	66.33	73.03	70.37	62.17	53.02	22.24	46.36	70- 80	62.56	369.5	61.6,61.6
90	50.26	60.86	65.68	66.02	56.11	47.20	9.971	39.13	80- 90	57.82	427.3	71.3,71.3
100	43.29	53.79	56.42	59.06	49.22	37.02	3.815	30.11	90-100	49.14	476.5	79.5,79.5
110	36.06	45.76	46.87	50.37	41.96	18.24	1.860	13.70	100-110	37.85	514.3	85.8,85.8
120	29.06	36.91	36.98	40.97	34.79	23.43	1.007	17.93	110-120	29.94	544.3	90.8,90.8
130	22.69	28.80	28.39	32.29	27.99	22.24	0.3516	15.95	120-130	22.39	566.7	94.5,94.5
140	17.34	21.76	21.44	24.58	21.59	18.57	0.5446	12.66	130-140	15.30	582.0	97.1,97.1
150	12.74	15.63	15.88	17.77	15.82	14.51	2.190	8.721	140-150	9.467	591.4	98.7,98.7
160	9.151	10.61	11.25	12.18	11.10	10.28	6.412	6.028	150-160	5.218	596.6	99.5,99.5
170	5.878	7.043	7.778	7.892	7.872	7.425	3.309	1.749	160-170	2.296	598.9	99.9,99.9
180	3.123	2.866	5.359	4.075	3.429	3.351	3.618	4.206	170-180	0.4699	599.4	100,100
DEG	LUMINOUS INTENSITY:cd Less than 25% Percent = 43.6 %									UNIT:lm		

Conical surface Flux(90deg): 161.89 lm

%lum = 27.0%

%lamp = 27.0%

Conical surface Flux(120deg): 244.77 lm

%lum = 40.8%

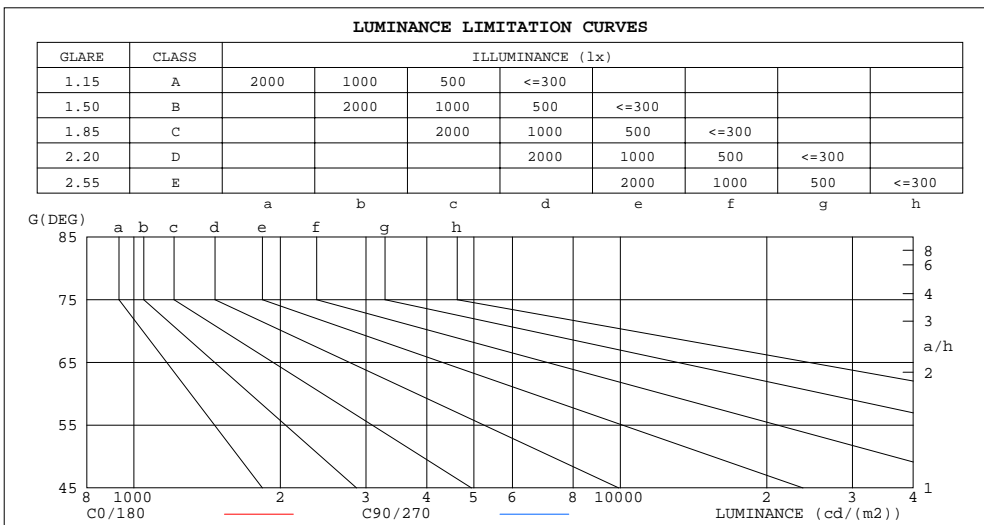
%lamp = 40.8%

C Range: 0 - 360DEG
 C Interval: 22.5DEG
 Test Speed: 10.0deg/s
 Temperature:25.2DEG
 Operators:monkey
 Test Date:

γ Range: 0 - 180DEG
 γ Interval: 1.0DEG
 Test System:EVERFINE GO-R5000_V2 SYSTEM V2.0.351
 Humidity:45%
 Test Distance:2.447m [K=1.0000]
 Remarks:

LUMINANCE LIMITATION CURVES

Test:U:120.0V I:0.0740A P:8.410W PF:0.9471 Lamp Flux:599.416x1 lm		
NAME:4902-1	TYPE:N/A	WEIGHT:N/A
SPEC.:N/A	DIM.: N/A	SERIAL No.:N/A
MFR.:	SUR.:N/A	Shielding Angle:N/A



LUMINANCE cd/(m2)		
G(DEG)	C0/180	C90/270
85	6140318	8012236
80	3271760	4207779
75	2296838	2898925
70	1794524	2214147
65	1479259	1768083
60	1253455	1447958
55	1076764	1224227
50	932504	1130719
45	835504	1100034

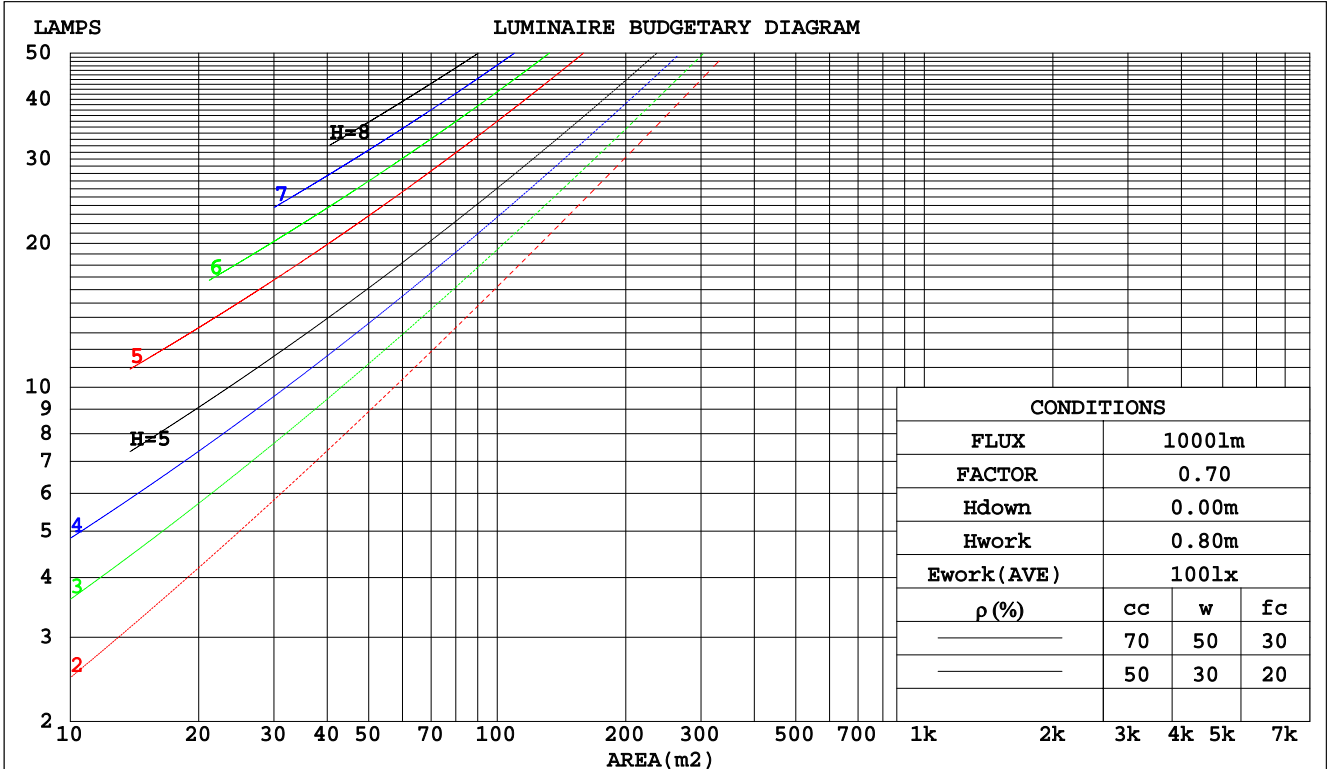
C Range: 0 - 360DEG
 C Interval: 22.5DEG
 Test Speed: 10.0deg/s
 Temperature:25.2DEG
 Operators:monkey
 Test Date:

γ Range: 0 - 180DEG
 γ Interval: 1.0DEG
 Test System:EVERFINE GO-R5000_V2 SYSTEM V2.0.351
 Humidity:45%
 Test Distance:2.447m [K=1.0000]
 Remarks:

CU AND LUMINAIRE BUDGETARY ESTIMATE DIAGRAM

Test:U:120.0V I:0.0740A P:8.410W PF:0.9471 Lamp Flux:599.416x1 lm		
NAME: 4902-1	TYPE:N/A	WEIGHT:N/A
SPEC.:N/A	DIM.: N/A	SERIAL No.:N/A
MFR.:	SUR.:N/A	Shielding Angle:N/A

pcc	80%			70%			50%			30%			10%			0
	50%	30%	10%	50%	30%	10%	50%	30%	10%	50%	30%	10%	50%	30%	10%	0
pw																
pf _c																
RCR	RCR:Room Cavity Ratio															
	Coefficients of Utilization(CU)															
0.0	1.12	1.12	1.12	1.06	1.06	1.06	.95	.95	.95	.85	.85	.85	.76	.76	.76	.71
1.0	.92	.86	.81	.87	.81	.77	.77	.73	.69	.68	.65	.62	.60	.57	.55	.51
2.0	.78	.70	.63	.73	.66	.60	.65	.59	.54	.57	.53	.49	.50	.47	.43	.39
3.0	.67	.58	.51	.64	.55	.48	.56	.50	.44	.50	.44	.40	.44	.39	.35	.32
4.0	.59	.49	.42	.56	.47	.40	.50	.42	.37	.44	.38	.33	.38	.34	.30	.26
5.0	.52	.43	.36	.50	.41	.34	.44	.37	.31	.39	.33	.28	.34	.29	.25	.22
6.0	.47	.38	.31	.44	.36	.30	.40	.32	.27	.35	.29	.25	.31	.26	.22	.19
7.0	.42	.33	.27	.40	.32	.26	.36	.29	.24	.32	.26	.22	.28	.23	.20	.17
8.0	.38	.30	.24	.36	.28	.23	.33	.26	.21	.29	.23	.19	.26	.21	.17	.15
9.0	.35	.27	.21	.33	.26	.20	.30	.23	.19	.27	.21	.17	.24	.19	.16	.14
10.0	.32	.24	.19	.31	.23	.18	.28	.21	.17	.25	.19	.16	.22	.18	.14	.12



C Range: 0 - 360DEG
 C Interval: 22.5DEG
 Test Speed: 10.0deg/s
 Temperature:25.2DEG
 Operators:monkey
 Test Date:

γ Range: 0 - 180DEG
 γ Interval: 1.0DEG
 Test System:EVERFINE GO-R5000_V2 SYSTEM V2.0.351
 Humidity:45%
 Test Distance:2.447m [K=1.0000]
 Remarks:

WEC AND CCEC

Test:U:120.0V I:0.0740A P:8.410W PF:0.9471 Lamp Flux:599.416x1 lm		
NAME: 4902-1	TYPE:N/A	WEIGHT:N/A
SPEC.:N/A	DIM.: N/A	SERIAL No.:N/A
MFR.:	SUR.:N/A	Shielding Angle:N/A

ρcc	80%			70%			50%			30%			10%			0
ρw	50%	30%	10%	50%	30%	10%	50%	30%	10%	50%	30%	10%	50%	30%	10%	0
ρfc	20%			20%			20%			20%			20%			0
RCR	RCR:Room Cavity Ratio						Wall Exitance Coefficients(WEC)									
0.0																
1.0	.412	.234	.074	.396	.226	.072	.366	.210	.067	.338	.195	.063	.313	.181	.058	
2.0	.346	.190	.058	.331	.182	.056	.304	.169	.053	.279	.156	.049	.256	.145	.046	
3.0	.302	.161	.048	.289	.155	.047	.264	.143	.044	.241	.132	.041	.220	.122	.038	
4.0	.269	.140	.041	.257	.135	.040	.235	.125	.037	.214	.115	.035	.194	.106	.032	
5.0	.243	.124	.036	.232	.119	.035	.212	.110	.032	.192	.102	.030	.175	.093	.028	
6.0	.222	.111	.032	.212	.107	.031	.193	.099	.029	.175	.091	.027	.159	.084	.025	
7.0	.204	.101	.029	.195	.097	.028	.177	.090	.026	.161	.083	.024	.146	.076	.022	
8.0	.189	.092	.026	.180	.089	.025	.164	.082	.023	.149	.075	.022	.135	.069	.020	
9.0	.175	.085	.024	.168	.082	.023	.153	.076	.021	.139	.070	.020	.126	.064	.018	
10.0	.164	.079	.022	.157	.076	.021	.143	.070	.020	.130	.064	.018	.118	.059	.017	

ρcc	80%			70%			50%			30%			10%			0
ρw	50%	30%	10%	50%	30%	10%	50%	30%	10%	50%	30%	10%	50%	30%	10%	0
ρfc	20%			20%			20%			20%			20%			0
RCR	RCR:Room Cavity Ratio						Ceiling Cavity Exitance Coefficients(CCEC)									
0.0	.409	.409	.409	.350	.350	.350	.239	.239	.239	.137	.137	.137	.044	.044	.044	
1.0	.408	.376	.347	.349	.322	.298	.239	.222	.206	.137	.128	.120	.044	.041	.039	
2.0	.401	.354	.313	.344	.304	.271	.236	.211	.189	.136	.123	.111	.044	.040	.036	
3.0	.394	.338	.293	.338	.291	.254	.232	.202	.178	.134	.118	.105	.043	.038	.034	
4.0	.386	.326	.279	.331	.281	.243	.228	.196	.171	.132	.115	.101	.042	.037	.033	
5.0	.378	.316	.270	.325	.273	.235	.224	.191	.166	.130	.112	.098	.042	.037	.032	
6.0	.371	.308	.264	.319	.267	.230	.220	.187	.162	.128	.110	.097	.041	.036	.032	
7.0	.363	.302	.259	.313	.262	.225	.216	.183	.160	.126	.108	.095	.041	.035	.031	
8.0	.357	.296	.255	.307	.257	.222	.213	.181	.158	.124	.106	.094	.040	.035	.031	
9.0	.350	.292	.252	.302	.253	.220	.209	.178	.156	.122	.105	.093	.039	.034	.031	
10.0	.345	.288	.250	.297	.250	.218	.206	.176	.155	.120	.104	.092	.039	.034	.031	

C Range: 0 - 360DEG
 C Interval: 22.5DEG
 Test Speed: 10.0deg/s
 Temperature:25.2DEG
 Operators:monkey
 Test Date:

γ Range: 0 - 180DEG
 γ Interval: 1.0DEG
 Test System:EVERFINE GO-R5000_V2 SYSTEM V2.0.351
 Humidity:45%
 Test Distance:2.447m [K=1.0000]
 Remarks:

UGR(Unified Glare Rating) Table

Test:U:120.0V I:0.0740A P:8.410W PF:0.9471 Lamp Flux:599.416x1 lm										
NAME: 4902-1					TYPE:N/A			WEIGHT:N/A		
SPEC.:N/A					DIM.: N/A			SERIAL No.:N/A		
MFR.:					SUR.:N/A			Shielding Angle:N/A		
ceiling/cavity	0.7	0.7	0.5	0.5	0.3	0.7	0.7	0.5	0.5	0.3
walls	0.5	0.3	0.5	0.3	0.3	0.5	0.3	0.5	0.3	0.3
working plane	0.2	0.2	0.2	0.2	0.2	0.2	0.2	0.2	0.2	0.2
Room dimensions	Viewed crosswise					Viewed endwise				
x = 2H y = 2H	35.4	36.7	36.1	37.3	38.1	36.2	37.5	36.8	38.1	38.9
3H	38.5	39.7	39.2	40.4	41.2	39.5	40.7	40.2	41.4	42.2
4H	40.2	41.4	40.9	42.1	42.9	41.4	42.5	42.1	43.2	44.0
6H	42.1	43.1	42.8	43.8	44.7	43.4	44.4	44.1	45.1	46.0
8H	43.1	44.1	43.8	44.8	45.7	44.5	45.5	45.2	46.2	47.1
12H	44.2	45.2	44.9	45.9	46.8	45.7	46.7	46.4	47.4	48.3
4H 2H	36.6	37.7	37.2	38.4	39.2	37.1	38.2	37.8	38.9	39.7
3H	39.8	40.8	40.6	41.5	42.4	40.6	41.6	41.3	42.3	43.2
4H	41.7	42.6	42.4	43.3	44.2	42.6	43.5	43.3	44.3	45.2
6H	43.6	44.4	44.4	45.2	46.2	44.8	45.6	45.6	46.4	47.3
8H	44.7	45.5	45.5	46.3	47.2	46.0	46.7	46.7	47.5	48.5
12H	45.9	46.6	46.7	47.4	48.4	47.3	48.0	48.1	48.8	49.8
8H 4H	42.5	43.3	43.3	44.0	45.0	43.2	44.0	44.0	44.8	45.7
6H	44.7	45.4	45.6	46.2	47.2	45.7	46.3	46.5	47.2	48.1
8H	46.0	46.6	46.8	47.4	48.4	47.1	47.7	47.9	48.5	49.5
12H	47.4	47.9	48.3	48.8	49.8	48.6	49.2	49.5	50.0	51.0
12H 4H	42.8	43.5	43.5	44.3	45.2	43.4	44.1	44.2	44.9	45.9
6H	45.1	45.7	45.9	46.5	47.5	46.0	46.5	46.8	47.4	48.4
8H	46.5	47.0	47.3	47.9	48.9	47.5	48.0	48.3	48.8	49.8
Variations with the observer position at spacings:										
S = 1.0H	+ 0.1 / - 0.1					+ 0.1 / - 0.1				
1.5H	+ 0.2 / - 0.3					+ 0.2 / - 0.3				
2.0H	+ 0.3 / - 0.4					+ 0.3 / - 0.4				

CIE Pub.117 Corrected 599.4 lm Total Lamp Luminous Flux.(8log(F/F0) = -1.8)

C Range: 0 - 360DEG
 C Interval: 22.5DEG
 Test Speed: 10.0deg/s
 Temperature:25.2DEG
 Operators:monkey
 Test Date:

γ Range: 0 - 180DEG
 γ Interval: 1.0DEG
 Test System:EVERFINE GO-R5000_V2 SYSTEM V2.0.351
 Humidity:45%
 Test Distance:2.447m [K=1.0000]
 Remarks:

UTILIZATION FACTORS TABLE

Test:U:120.0V I:0.0740A P:8.410W PF:0.9471 Lamp Flux:599.416x1 lm		
NAME: 4902-1	TYPE:N/A	WEIGHT:N/A
SPEC.:N/A	DIM.: N/A	SERIAL No.:N/A
MFR.:	SUR.:N/A	Shielding Angle:N/A

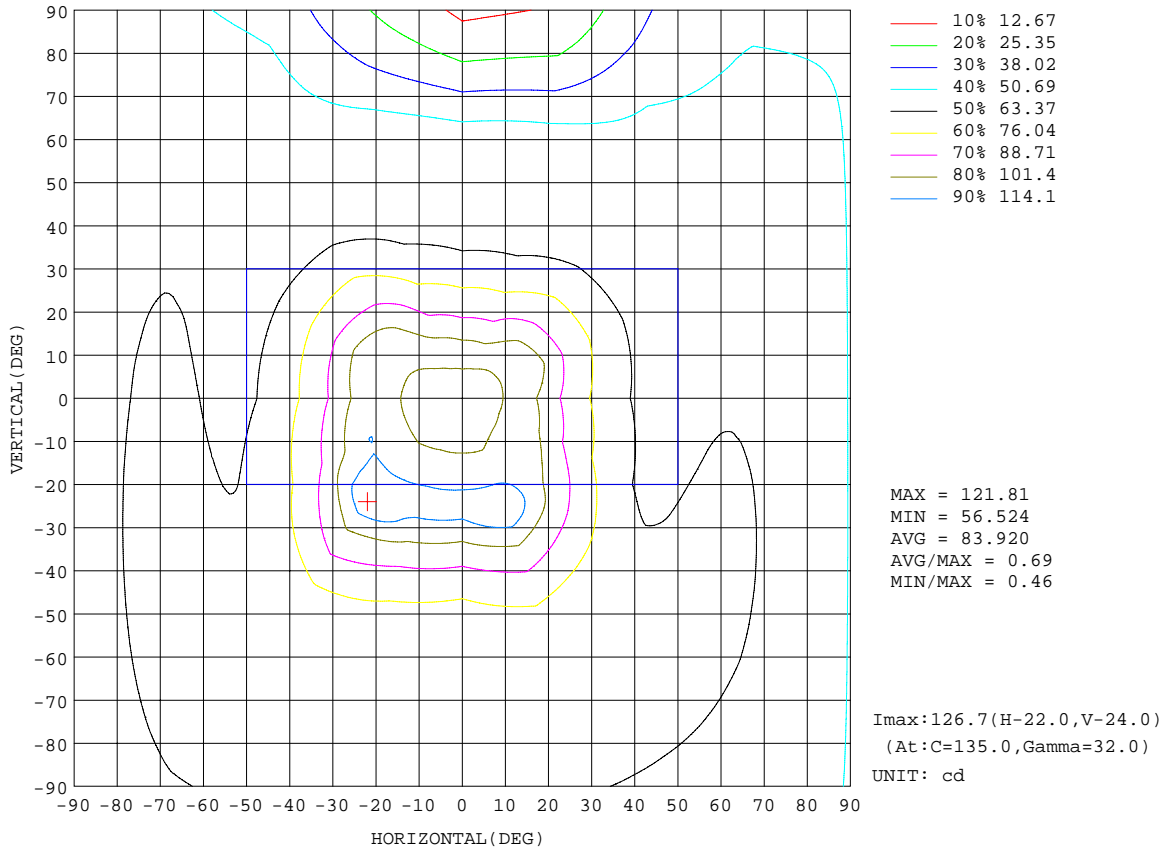
REFLECTANCE										
Ceiling	0.8	0.8	0.8	0.7	0.7	0.7	0.5	0.5	0.5	0
Walls	0.7	0.5	0.3	0.7	0.5	0.3	0.7	0.5	0.3	0
Working plane	0.2	0.2	0.2	0.2	0.2	0.2	0.2	0.2	0.2	0
ROOM INDEX	UTILIZATION FACTORS(PERCENT) k(RI) x RCR = 5									
k = 0.60	44	32	25	43	31	24	40	30	24	17
0.80	53	39	31	51	38	31	47	37	30	21
1.00	60	46	38	57	45	37	53	45	35	26
1.25	66	53	44	64	51	43	58	48	41	30
1.50	72	58	49	68	56	48	62	52	45	33
2.00	79	67	58	75	64	56	68	59	52	38
2.50	84	72	64	79	69	61	72	63	57	42
3.00	87	77	69	83	74	66	75	67	61	45
4.00	92	83	76	88	80	73	79	72	67	49
5.00	96	88	81	91	84	78	81	76	71	52
ROOM INDEX	UF(total)									Direct
According to DIN EN 13032-2 2004			Suspended				SHRNOM = 1.25			

C Range: 0 - 360DEG
 C Interval: 22.5DEG
 Test Speed: 10.0deg/s
 Temperature:25.2DEG
 Operators:monkey
 Test Date:

γ Range: 0 - 180DEG
 γ Interval: 1.0DEG
 Test System:EVERFINE GO-R5000_V2 SYSTEM V2.0.351
 Humidity:45%
 Test Distance:2.447m [K=1.0000]
 Remarks:

ISOCANDELA DIAGRAM

Test:U:120.0V I:0.0740A P:8.410W PF:0.9471 Lamp Flux:599.416x1 lm		
NAME:4902-1	TYPE:N/A	WEIGHT:N/A
SPEC.:N/A	DIM.: N/A	SERIAL No.:N/A
MFR.:	SUR.:N/A	Shielding Angle:N/A

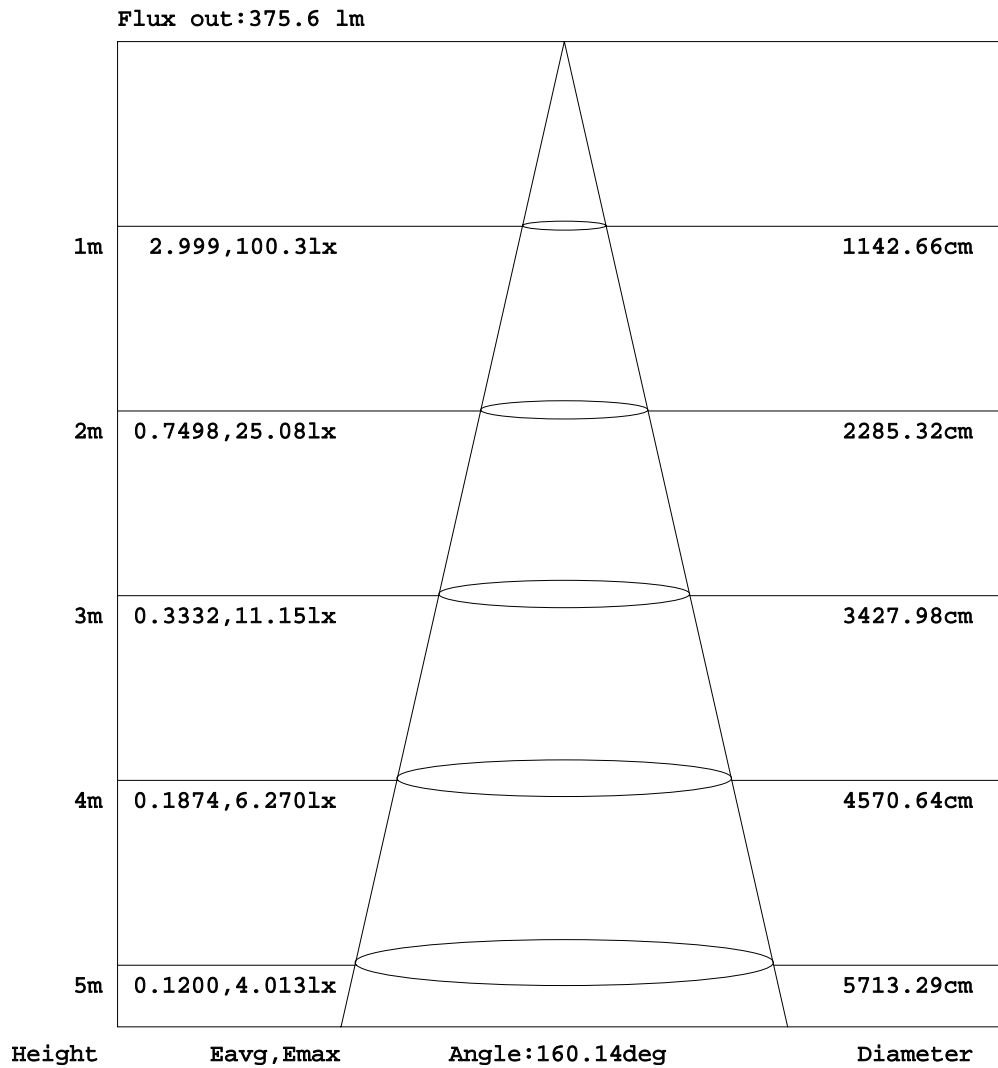


C Range: 0 - 360DEG
 C Interval: 22.5DEG
 Test Speed: 10.0deg/s
 Temperature:25.2DEG
 Operators:monkey
 Test Date:

γ Range: 0 - 180DEG
 γ Interval: 1.0DEG
 Test System:EVERFINE GO-R5000_V2 SYSTEM V2.0.351
 Humidity:45%
 Test Distance:2.447m [K=1.0000]
 Remarks:

AAI Figure

Test:U:120.0V I:0.0740A P:8.410W PF:0.9471 Lamp Flux:599.416x1 lm		
NAME: 4902-1	TYPE:N/A	WEIGHT:N/A
SPEC.:N/A	DIM.: N/A	SERIAL No.:N/A
MFR.:	SUR.:N/A	Shielding Angle:N/A



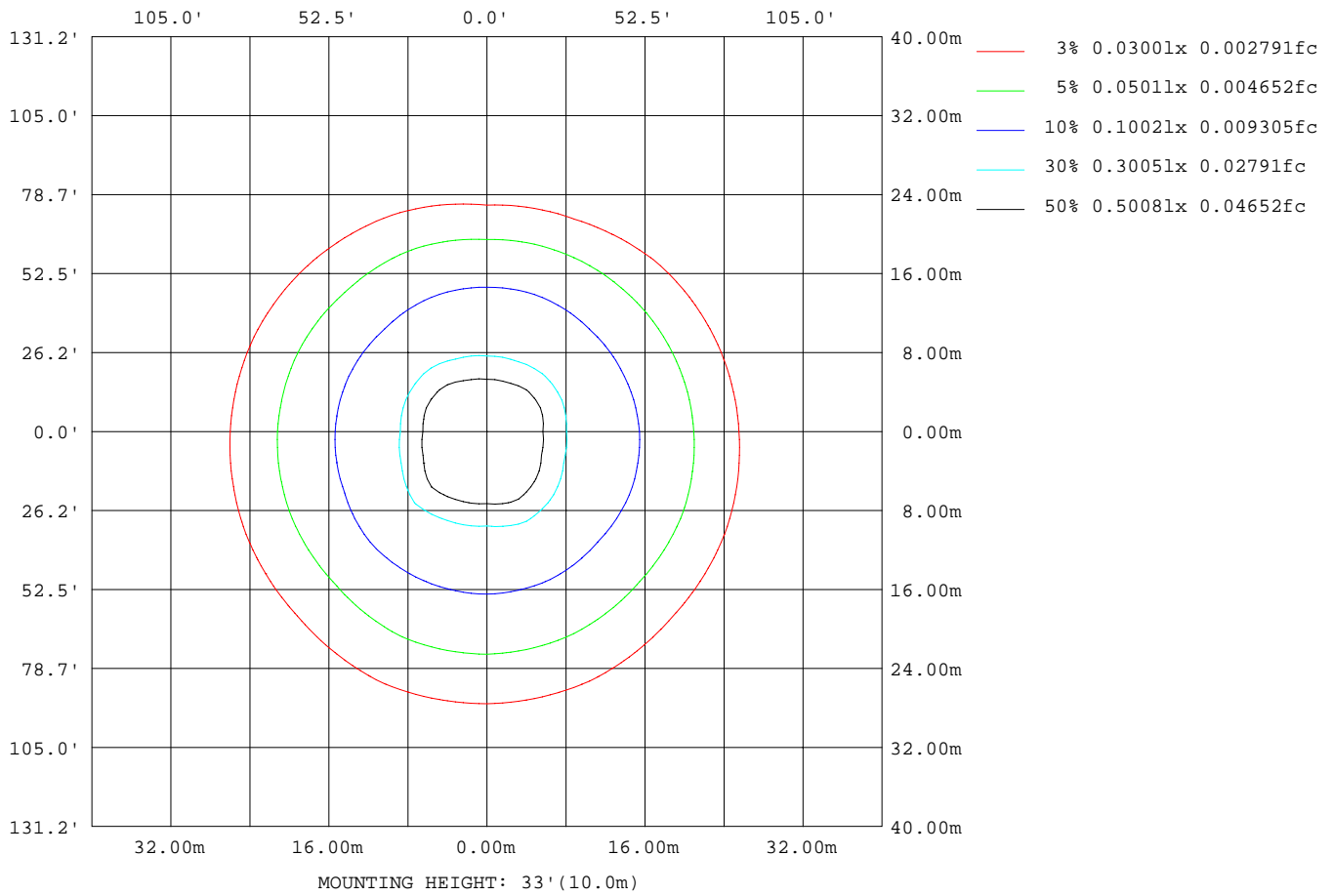
Note:The Curves indicate the illuminated area and the average illumination when the luminaire is at different distance.

C Range: 0 - 360DEG
 C Interval: 22.5DEG
 Test Speed: 10.0deg/s
 Temperature:25.2DEG
 Operators:monkey
 Test Date:

γ Range: 0 - 180DEG
 γ Interval: 1.0DEG
 Test System:EVERFINE GO-R5000_V2 SYSTEM V2.0.351
 Humidity:45%
 Test Distance:2.447m [K=1.0000]
 Remarks:

ISOLUX DIAGRAM

Test:U:120.0V I:0.0740A P:8.410W PF:0.9471 Lamp Flux:599.416x1 lm		
NAME: 4902-1	TYPE:N/A	WEIGHT:N/A
SPEC.:N/A	DIM.: N/A	SERIAL No.:N/A
MFR.:	SUR.:N/A	Shielding Angle:N/A



C Range: 0 - 360DEG
 C Interval: 22.5DEG
 Test Speed: 10.0deg/s
 Temperature:25.2DEG
 Operators:monkey
 Test Date:

γ Range: 0 - 180DEG
 γ Interval: 1.0DEG
 Test System:EVERFINE GO-R5000_V2 SYSTEM V2.0.351
 Humidity:45%
 Test Distance:2.447m [K=1.0000]
 Remarks:

LED Avg.L Report

Test:U:120.0V I:0.0740A P:8.410W PF:0.9471 Lamp Flux:599.416x1 lm		
NAME: 4902-1	TYPE:N/A	WEIGHT:N/A
SPEC.:N/A	DIM.: N/A	SERIAL No.:N/A
MFR.:	SUR.:N/A	Shielding Angle:N/A

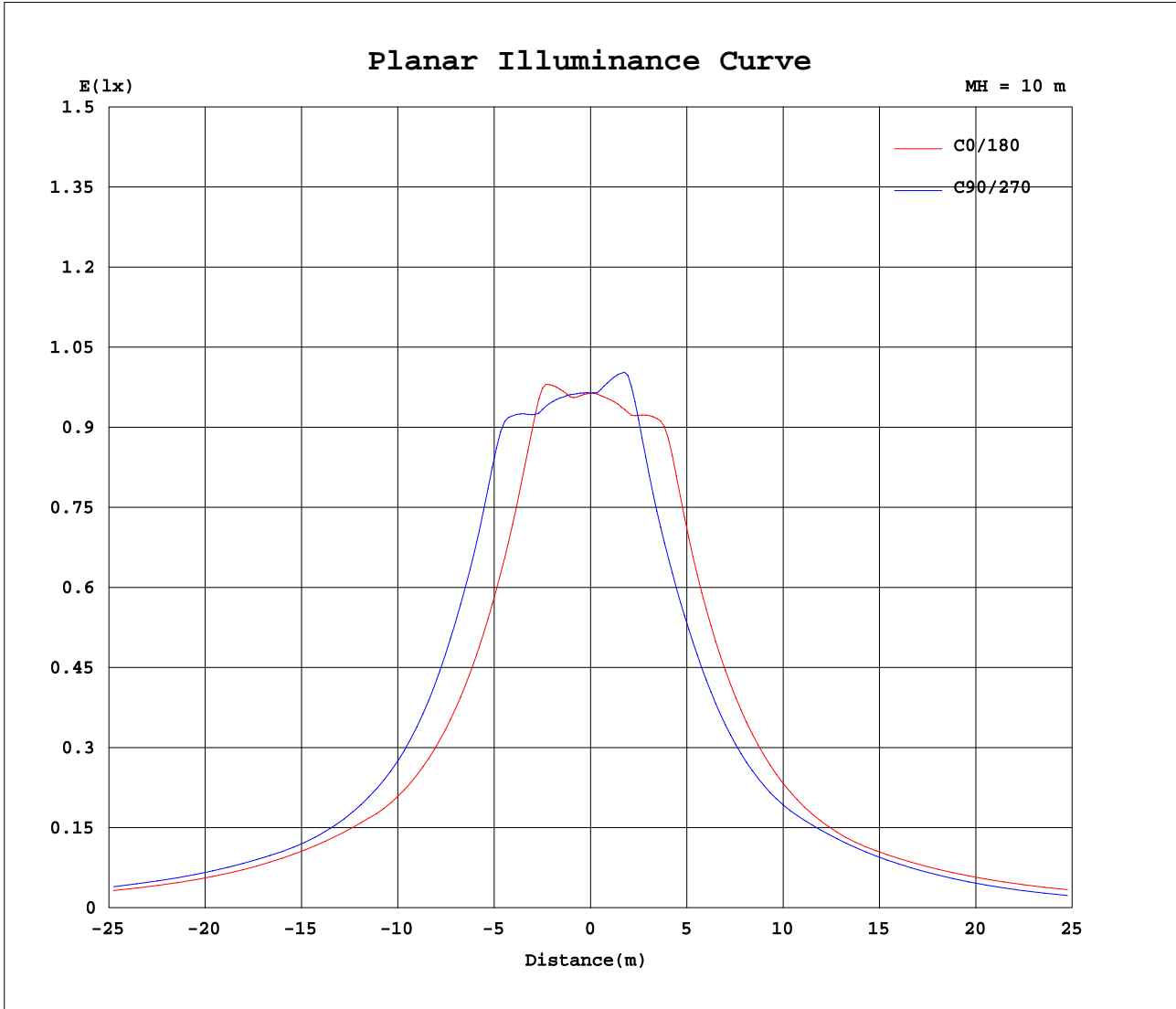
AvgL	cd/m2
L_0~180(65)av	1502076
L_0~180(75)av	2382564
L_0~180(85)av	6479816
L_90~270(65)av	1467475
L_90~270(75)av	2036901
L_90~270(85)av	4889523
L_45(65)av	1472945
L_45(75)av	2354865
L_45(85)av	6462815

Standard: GB/T 29293-2012

C Range: 0 - 360DEG
 C Interval: 22.5DEG
 Test Speed: 10.0deg/s
 Temperature:25.2DEG
 Operators:monkey
 Test Date:

γ Range: 0 - 180DEG
 γ Interval: 1.0DEG
 Test System:EVERFINE GO-R5000_V2 SYSTEM V2.0.351
 Humidity:45%
 Test Distance:2.447m [K=1.0000]
 Remarks:

Planar Illuminance Curve



C Range: 0 - 360DEG
 C Interval: 22.5DEG
 Test Speed: 10.0deg/s
 Temperature: 25.2DEG
 Operators: monkey
 Test Date:

γ Range: 0 - 180DEG
 γ Interval: 1.0DEG
 Test System: EVERFINE GO-R5000_V2 SYSTEM V2.0.351
 Humidity: 45%
 Test Distance: 2.447m [K=1.0000]
 Remarks:

LUMINOUS DISTRIBUTION INTENSITY DATA

Test:U:120.0V I:0.0740A P:8.410W PF:0.9471 Lamp Flux:599.416x1 lm		
NAME: 4902-1	TYPE:N/A	WEIGHT:N/A
SPEC.:N/A	DIM.: N/A	SERIAL No.:N/A
MFR.:	SUR.:N/A	Shielding Angle:N/A

Table--1

UNIT: cd

C(DEG) γ (DEG)	0	22.5	45	67.5	90	112.5	135	157.5	180	202.5	225	247.5	270	292.5	315	337.5			
0	96.4	96.4	96.4	96.4	96.4	96.4	96.4	96.4	96.4	96.4	96.4	96.4	96.4	96.4	96.4	96.4			
5	96.7	97.0	97.2	97.3	97.3	97.3	96.9	96.6	96.5	96.6	97.7	98.9	99.4	99.0	98.0	96.7			
10	102	103	101	99.5	99.6	99.7	99.2	98.5	97.7	98.5	102	104	105	104	103	102			
15	106	109	108	103	103	103	102	103	102	104	106	102	97.6	98.1	107	109			
20	94.8	99.9	111	111	111	110	106	111	110	111	104	90.0	85.9	87.0	98.4	103			
25	84.1	89.3	104	122	120	120	117	112	103	108	97.6	81.0	76.9	78.2	86.5	89.3			
30	75.3	80.6	97.6	121	109	113	126	100	90.9	93.9	87.4	73.6	69.2	70.3	78.1	79.8			
35	67.9	72.9	89.8	104	97.4	102	116	89.8	80.8	82.6	79.0	66.8	62.3	63.5	70.2	71.5			
40	62.3	66.5	81.6	93.6	86.5	91.2	101	80.9	72.5	73.2	70.9	61.1	57.2	58.1	63.1	64.4			
45	59.1	62.4	74.7	84.1	77.7	81.7	90.7	73.7	65.9	65.8	63.6	56.8	54.5	55.0	57.9	59.3			
50	59.9	61.4	69.1	76.5	72.6	75.3	80.7	68.2	61.6	60.6	58.6	55.3	55.1	55.6	55.4	57.0			
55	61.7	64.2	65.9	71.6	70.2	71.6	73.4	64.7	60.5	58.5	56.1	56.3	55.5	56.2	56.0	58.3			
60	62.7	65.9	66.8	70.4	72.4	71.6	69.4	65.2	63.0	60.2	56.6	56.4	54.5	55.5	56.1	58.9			
65	62.5	66.5	68.1	72.7	74.7	74.3	68.8	67.3	64.5	61.3	56.8	54.4	49.4	51.3	55.2	58.8			
70	61.4	66.1	68.6	74.1	75.7	75.8	70.4	68.4	64.8	61.4	56.3	48.8	40.1	42.9	53.1	57.8			
75	59.4	64.5	67.9	74.0	75.0	75.8	70.9	68.3	63.9	60.7	55.0	41.9	30.4	33.6	49.9	56.3			
80	56.8	62.2	66.3	72.5	73.0	74.5	70.4	67.3	62.2	59.4	53.0	35.8	22.2	25.6	46.4	54.6			
85	53.5	59.3	63.9	69.8	69.8	71.8	68.7	65.4	59.4	57.6	50.2	30.5	15.4	19.0	42.6	52.2			
90	50.3	56.1	60.9	66.1	65.7	68.3	66.0	62.7	56.1	53.3	47.2	26.1	9.97	13.8	39.1	48.2			
95	46.8	52.8	57.6	62.4	61.0	64.2	62.7	59.5	52.7	47.9	43.8	22.5	6.08	9.88	35.6	43.1			
100	43.3	49.7	53.8	58.2	56.4	60.3	59.1	56.5	49.2	24.1	37.0	19.2	3.81	7.32	30.1	22.4			
105	39.7	45.4	50.0	53.5	51.8	55.9	54.8	52.4	45.6	30.1	23.8	14.7	2.59	5.38	19.2	25.5			
110	36.1	41.1	45.8	48.4	46.9	50.8	50.4	47.8	42.0	35.7	18.2	10.1	1.86	3.79	13.7	30.8			
115	32.5	37.0	41.3	43.3	41.8	45.5	45.6	43.5	38.3	34.5	20.7	7.58	1.40	2.84	15.9	30.0			
120	29.1	33.2	36.9	38.4	37.0	40.2	41.0	39.1	34.8	32.2	23.4	7.16	1.01	2.23	17.9	27.8			
125	25.8	29.4	32.7	33.8	32.5	35.4	36.5	35.0	31.3	29.6	23.7	7.25	0.62	1.89	17.4	25.6			
130	22.7	25.9	28.8	29.6	28.4	31.0	32.3	31.0	28.0	26.4	22.2	7.72	0.35	2.18	15.9	22.8			
135	19.9	22.6	25.2	25.7	24.8	27.0	28.3	27.3	24.8	23.4	20.4	8.54	0.31	2.33	14.4	20.0			
140	17.3	19.5	21.8	22.1	21.4	23.3	24.6	23.7	21.6	20.4	18.6	8.88	0.54	2.13	12.7	17.3			
145	15.0	16.6	18.5	18.9	18.5	20.0	21.1	20.3	18.6	17.6	16.6	9.00	1.24	1.89	10.5	14.7			
150	12.7	14.0	15.6	15.9	15.9	17.0	17.8	17.1	15.8	15.0	14.5	9.87	2.19	1.65	8.72	12.4			
155	10.9	11.8	13.0	13.2	13.4	14.2	14.8	14.2	13.3	12.8	12.4	10.4	4.70	2.14	7.53	10.3			
160	9.15	9.82	10.6	10.8	11.3	11.7	12.2	11.8	11.1	10.9	10.3	9.39	6.41	2.75	6.03	8.27			
165	7.67	8.09	8.47	8.91	9.39	9.55	9.93	9.64	9.36	9.27	8.63	8.07	6.12	3.24	4.25	6.62			
170	5.88	6.26	7.04	7.58	7.78	7.83	7.89	7.84	7.87	7.86	7.42	6.36	3.31	0.58	1.75	4.50			
175	4.95	5.76	6.05	6.15	6.52	6.54	6.19	5.89	6.64	6.65	5.62	3.19	0.14	0.15	0.14	0.15			
180	3.12	3.03	2.87	5.06	5.36	5.25	4.08	2.48	3.43	3.44	3.35	3.22	3.62	4.50	4.21	3.61			

C Range: 0 - 360DEG
 C Interval: 22.5DEG
 Test Speed: 10.0deg/s
 Temperature:25.2DEG
 Operators:monkey
 Test Date:

γ Range: 0 - 180DEG
 γ Interval: 1.0DEG
 Test System:EVERFINE GO-R5000_V2 SYSTEM V2.0.351
 Humidity:45%
 Test Distance:2.447m [K=1.0000]
 Remarks: