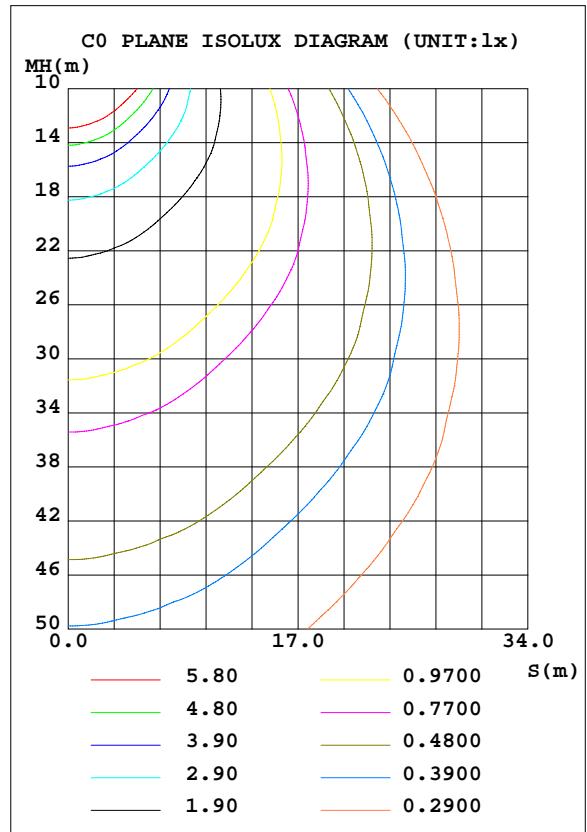
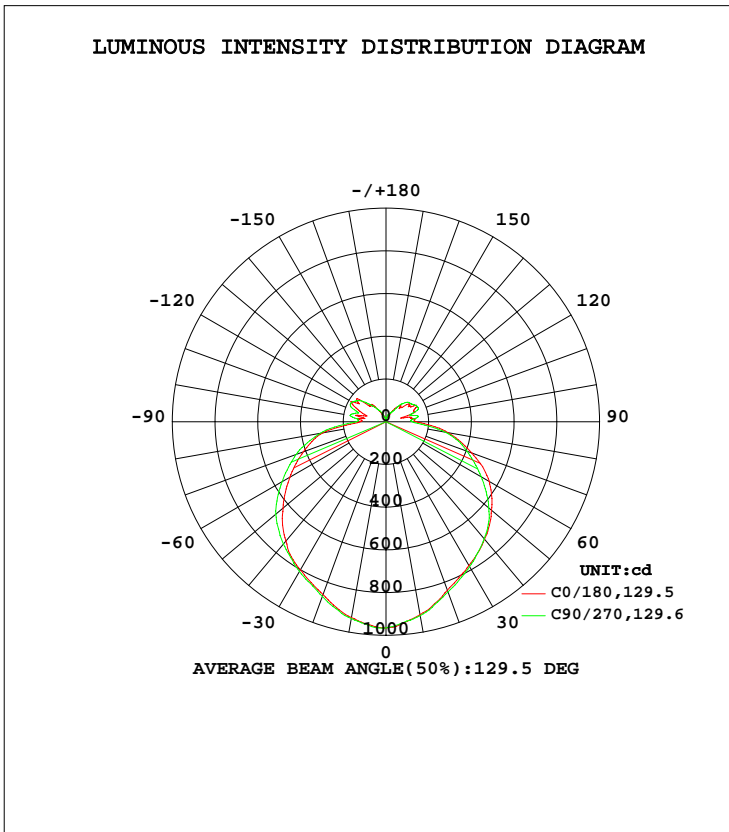


LUMINAIRE PHOTOMETRIC TEST REPORT

Test:U:120.1V I:0.5050A P:59.61W PF:0.9830 Lamp Flux:4095.5x1 lm		
NAME: Led Light	TYPE:N/A	WEIGHT:N/A
SPEC.:N/A	DIM.: N/A	SERIAL No.:N/A
MFR.:	SUR.:N/A	Shielding Angle:N/A

DATA OF LAMP		PHOTOMETRIC DATA Eff: 68.70 lm/W			
MODEL	4602	Imax(cd)	967.6	S/MH(C0/180)	1.21
NOMINAL POWER(W)		LOR(%)	100.0	S/MH(C90/270)	1.22
RATED VOLTAGE(V)	120	TOTAL FLUX(lm)	4095.5	η UP, DN(C0-180)	9.4,41.8
NOMINAL FLUX(lm)	4095.5	CIE CLASS	SEMI-D.	η UP, DN(C180-360)	8.8,39.9
LAMPS INSIDE	1	η up(%)	18.2	CIBSE SHR NOM	1.50
TEST VOLTAGE(V)	120	η down(%)	81.8	CIBSE SHR MAX	1.50



C Range: 0 - 360DEG
 C Interval: 22.5DEG
 Test Speed: 10.0deg/s
 Temperature:25.1DEG
 Operators:ben
 Test Date:2019-11-18

γ Range: 0 - 180DEG
 γ Interval: 1.0DEG
 Test System: GO-R5000_V2 SYSTEM V2.0.351
 Humidity:44%
 Test Distance:2.481m [K=1.0000]
 Remarks:

ZONAL FLUX DIAGRAM

ZONAL FLUX DIAGRAM:

γ	C0	C45	C90	C135	C180	C225	C270	C315	γ	Φ zone	Φ total	%lum, lamp
10	931.7	936.0	935.8	929.3	917.5	917.0	922.6	927.7	0- 10	89.95	89.95	2.2,2.2
20	861.4	869.0	870.4	863.4	839.8	837.1	848.8	853.4	10- 20	252.3	342.2	8.36,8.36
30	801.0	807.7	810.4	803.0	776.8	770.3	783.3	791.3	20- 30	380.3	722.5	17.6,17.6
40	728.4	750.2	747.5	743.9	717.8	707.7	715.5	718.4	30- 40	478.2	1201	29.3,29.3
50	629.1	652.6	673.6	670.3	645.2	631.5	628.5	615.4	40- 50	532.2	1733	42.3,42.3
60	519.5	541.5	562.1	576.1	557.9	530.9	515.0	506.9	50- 60	530.8	2264	55.3,55.3
70	411.4	429.7	447.3	447.3	427.5	413.3	403.8	400.8	60- 70	477.2	2741	66.9,66.9
80	299.7	310.2	312.5	309.1	295.0	283.1	281.8	290.8	70- 80	383.2	3124	76.3,76.3
90	121.8	128.3	138.8	145.2	140.8	131.4	123.6	120.2	80- 90	224.7	3349	81.8,81.8
100	106.2	145.9	171.7	151.4	121.0	132.8	153.6	129.6	90-100	143.2	3492	85.3,85.3
110	117.7	143.9	148.4	153.5	142.7	145.6	155.9	146.7	100-110	137.7	3630	88.6,88.6
120	190.2	180.0	183.9	162.8	149.7	158.5	157.3	175.4	110-120	157.7	3787	92.5,92.5
130	160.5	163.7	153.0	136.8	125.7	141.4	141.6	166.1	120-130	140.2	3928	95.9,95.9
140	102.4	119.4	96.86	99.53	97.01	83.08	104.7	99.00	130-140	92.25	4020	98.2,98.2
150	53.70	64.22	60.86	58.46	53.61	51.73	51.29	49.00	140-150	48.06	4068	99.3,99.3
160	30.83	32.12	31.18	38.27	27.72	32.85	36.15	33.83	150-160	19.55	4087	99.8,99.8
170	15.02	12.65	14.78	13.11	14.81	12.52	16.13	12.61	160-170	6.970	4094	100,100
180	19.43	18.51	16.17	15.54	17.99	17.49	16.96	15.54	170-180	1.081	4096	100,100
DEG	LUMINOUS INTENSITY:cd Less than 25% Percent = 15.0 %									UNIT:lm		

Conical surface Flux(90deg): 1463.4 lm

%lum = 35.7%
 %lamp = 35.7%

Conical surface Flux(120deg): 2263.6 lm

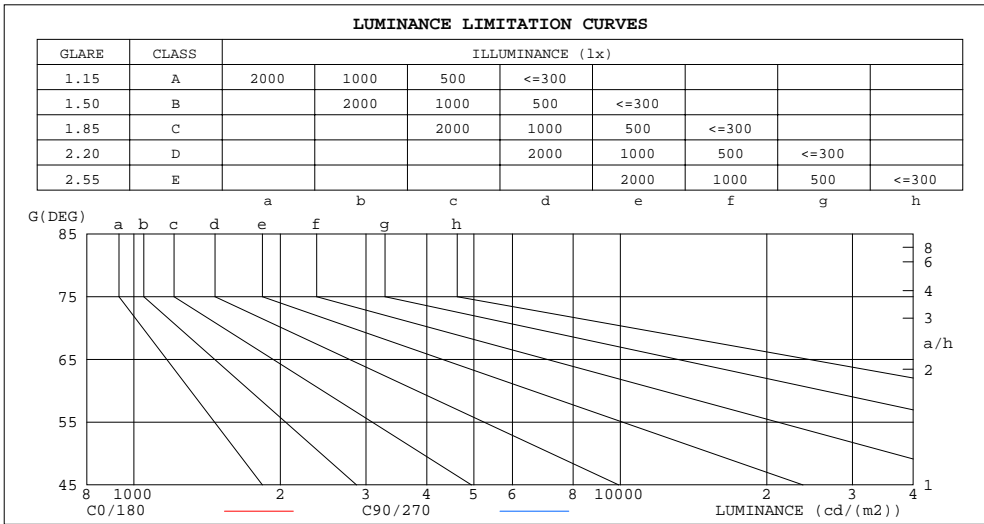
%lum = 55.3%
 %lamp = 55.3%

C Range: 0 - 360DEG
 C Interval: 22.5DEG
 Test Speed: 10.0deg/s
 Temperature:25.1DEG
 Operators:ben
 Test Date:2019-11-18

γ Range: 0 - 180DEG
 γ Interval: 1.0DEG
 Test System: GO-R5000_V2 SYSTEM V2.0.351
 Humidity:44%
 Test Distance:2.481m [K=1.0000]
 Remarks:

LUMINANCE LIMITATION CURVES

Test:U:120.1V I:0.5050A P:59.61W PF:0.9830 Lamp Flux:4095.5x1 lm		
NAME: Led Light	TYPE:N/A	WEIGHT:N/A
SPEC.:N/A	DIM.: N/A	SERIAL No.:N/A
MFR.:	SUR.:N/A	Shielding Angle:N/A



LUMINANCE cd/(m2)		
G (DEG)	C0/180	C90/270
85	21549261	25294962
80	17267262	17995930
75	13898509	14725826
70	12032515	13080067
65	11013848	11923659
60	10392505	11243012
55	10028502	10810964
50	9789871	10480735
45	9684989	10053333

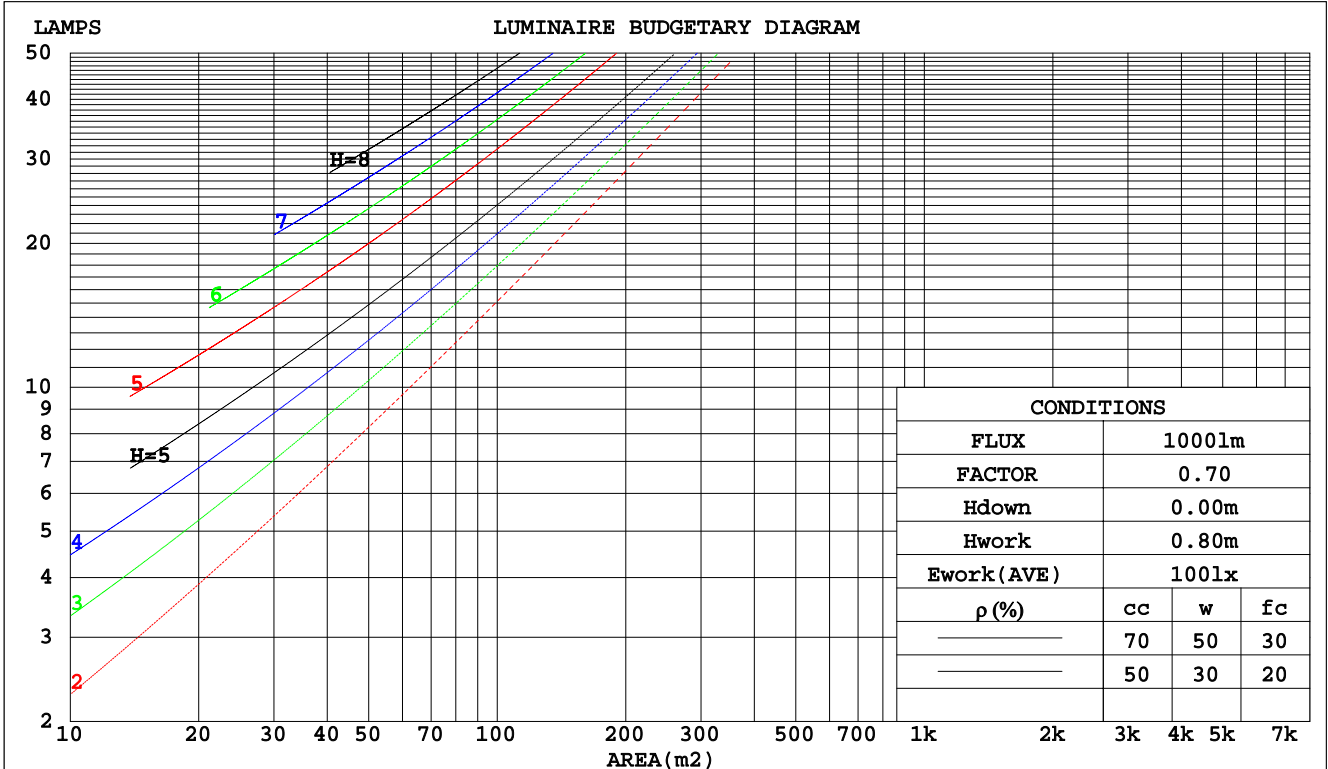
C Range: 0 - 360DEG
 C Interval: 22.5DEG
 Test Speed: 10.0deg/s
 Temperature:25.1DEG
 Operators:ben
 Test Date:2019-11-18

γ Range: 0 - 180DEG
 γ Interval: 1.0DEG
 Test System: GO-R5000_V2 SYSTEM V2.0.351
 Humidity:44%
 Test Distance:2.481m [K=1.0000]
 Remarks:

CU AND LUMINAIRE BUDGETARY ESTIMATE DIAGRAM

Test:U:120.1V I:0.5050A P:59.61W PF:0.9830 Lamp Flux:4095.5x1 lm		
NAME: Led Light	TYPE:N/A	WEIGHT:N/A
SPEC.:N/A	DIM.: N/A	SERIAL No.:N/A
MFR.:	SUR.:N/A	Shielding Angle:N/A

pcc	80%			70%			50%			30%			10%			0
	50%	30%	10%	50%	30%	10%	50%	30%	10%	50%	30%	10%	50%	30%	10%	0
pw																
pfc	20%			20%			20%			20%			20%			0
RCR	RCR:Room Cavity Ratio						Coefficients of Utilization(CU)									
0.0	1.15	1.15	1.15	1.10	1.10	1.10	1.01	1.01	1.01	.93	.93	.93	.85	.85	.85	.82
1.0	.97	.92	.87	.93	.88	.84	.85	.81	.78	.78	.75	.72	.71	.69	.67	.63
2.0	.83	.75	.69	.79	.72	.66	.73	.67	.62	.67	.62	.58	.61	.57	.54	.51
3.0	.72	.63	.56	.69	.61	.54	.63	.56	.51	.58	.52	.48	.53	.49	.45	.42
4.0	.63	.54	.47	.60	.52	.45	.56	.48	.43	.51	.45	.40	.47	.42	.38	.35
5.0	.56	.47	.40	.54	.45	.39	.49	.42	.36	.46	.39	.34	.42	.37	.32	.30
6.0	.50	.41	.34	.48	.40	.33	.44	.37	.32	.41	.35	.30	.38	.32	.28	.26
7.0	.45	.36	.30	.43	.35	.29	.40	.33	.28	.37	.31	.26	.34	.29	.25	.22
8.0	.41	.32	.26	.40	.31	.26	.37	.30	.24	.34	.28	.23	.32	.26	.22	.20
9.0	.37	.29	.24	.36	.28	.23	.34	.27	.22	.31	.25	.21	.29	.24	.20	.18
10.0	.34	.26	.21	.33	.26	.21	.31	.24	.20	.29	.23	.19	.27	.22	.18	.16



C Range: 0 - 360DEG
 C Interval: 22.5DEG
 Test Speed: 10.0deg/s
 Temperature:25.1DEG
 Operators:ben
 Test Date:2019-11-18

γ Range: 0 - 180DEG
 γ Interval: 1.0DEG
 Test System: GO-R5000_V2 SYSTEM V2.0.351
 Humidity:44%
 Test Distance:2.481m [K=1.0000]
 Remarks:

WEC AND CCEC

Test:U:120.1V I:0.5050A P:59.61W PF:0.9830 Lamp Flux:4095.5x1 lm									
NAME: Led Light					TYPE:N/A			WEIGHT:N/A	
SPEC.:N/A					DIM.: N/A			SERIAL No.:N/A	
MFR.:					SUR.:N/A			Shielding Angle:N/A	

ρcc	80%			70%			50%			30%			10%			0
ρw	50%	30%	10%	50%	30%	10%	50%	30%	10%	50%	30%	10%	50%	30%	10%	0
ρfc	20%			20%			20%			20%			20%			0
RCR	RCR:Room Cavity Ratio						Wall Exitance Coefficients(WEC)									
0.0																
1.0	.365	.208	.066	.352	.201	.064	.328	.188	.060	.306	.177	.057	.286	.166	.053	
2.0	.323	.177	.054	.312	.172	.053	.290	.161	.050	.270	.152	.047	.252	.142	.045	
3.0	.290	.154	.046	.280	.150	.045	.260	.141	.043	.242	.133	.041	.225	.125	.039	
4.0	.262	.136	.040	.253	.132	.039	.235	.125	.037	.219	.118	.035	.204	.111	.034	
5.0	.239	.122	.035	.231	.119	.035	.215	.112	.033	.200	.105	.031	.186	.099	.030	
6.0	.220	.110	.032	.212	.107	.031	.197	.101	.029	.184	.095	.028	.171	.090	.027	
7.0	.203	.100	.028	.196	.098	.028	.183	.092	.027	.170	.087	.025	.158	.082	.024	
8.0	.189	.092	.026	.182	.090	.025	.170	.085	.024	.158	.080	.023	.147	.076	.022	
9.0	.176	.085	.024	.170	.083	.023	.159	.078	.022	.148	.074	.021	.138	.070	.020	
10.0	.165	.079	.022	.159	.077	.021	.149	.073	.021	.139	.069	.020	.129	.065	.019	

ρcc	80%			70%			50%			30%			10%			0
ρw	50%	30%	10%	50%	30%	10%	50%	30%	10%	50%	30%	10%	50%	30%	10%	0
ρfc	20%			20%			20%			20%			20%			0
RCR	RCR:Room Cavity Ratio						Ceiling Cavity Exitance Coefficients(CCEC)									
0.0	.329	.329	.329	.282	.282	.282	.192	.192	.192	.110	.110	.110	.035	.035	.035	
1.0	.324	.296	.270	.277	.254	.232	.190	.175	.161	.109	.101	.093	.035	.033	.030	
2.0	.317	.273	.235	.272	.235	.203	.186	.162	.142	.107	.095	.083	.034	.031	.027	
3.0	.310	.256	.213	.266	.221	.185	.183	.154	.130	.105	.090	.076	.034	.029	.025	
4.0	.303	.244	.199	.260	.211	.173	.179	.147	.122	.103	.086	.072	.033	.028	.024	
5.0	.295	.234	.189	.253	.202	.164	.175	.141	.116	.101	.083	.069	.033	.027	.023	
6.0	.288	.226	.182	.247	.196	.158	.171	.137	.112	.099	.081	.066	.032	.026	.022	
7.0	.281	.219	.176	.241	.190	.154	.167	.133	.109	.097	.079	.065	.031	.026	.021	
8.0	.274	.214	.172	.236	.185	.150	.163	.130	.107	.095	.077	.064	.031	.025	.021	
9.0	.268	.209	.169	.231	.181	.148	.160	.127	.105	.093	.075	.062	.030	.025	.021	
10.0	.262	.205	.167	.226	.178	.145	.157	.125	.103	.091	.074	.062	.030	.024	.020	

C Range: 0 - 360DEG
 C Interval: 22.5DEG
 Test Speed: 10.0deg/s
 Temperature:25.1DEG
 Operators:ben
 Test Date:2019-11-18

γ Range: 0 - 180DEG
 γ Interval: 1.0DEG
 Test System: GO-R5000_V2 SYSTEM V2.0.351
 Humidity:44%
 Test Distance:2.481m [K=1.0000]
 Remarks:

UGR(Unified Glare Rating) Table

Test:U:120.1V I:0.5050A P:59.61W PF:0.9830 Lamp Flux:4095.5x1 lm										
NAME: Led Light					TYPE:N/A			WEIGHT:N/A		
SPEC.:N/A					DIM.: N/A			SERIAL No.:N/A		
MFR.:					SUR.:N/A			Shielding Angle:N/A		
ceiling/cavity	0.7	0.7	0.5	0.5	0.3	0.7	0.7	0.5	0.5	0.3
walls	0.5	0.3	0.5	0.3	0.3	0.5	0.3	0.5	0.3	0.3
working plane	0.2	0.2	0.2	0.2	0.2	0.2	0.2	0.2	0.2	0.2
Room dimensions	Viewed crosswise					Viewed endwise				
x = 2H y = 2H	43.9	45.3	44.4	45.8	46.4	44.2	45.6	44.7	46.1	46.6
3H	46.1	47.3	46.6	47.9	48.5	46.4	47.7	47.0	48.2	48.8
4H	47.3	48.4	47.8	49.0	49.6	47.6	48.8	48.2	49.4	50.0
6H	48.5	49.6	49.1	50.2	50.8	48.8	49.9	49.4	50.5	51.1
8H	49.0	50.1	49.6	50.7	51.3	49.4	50.4	50.0	51.0	51.7
12H	49.5	50.5	50.1	51.1	51.8	49.9	51.0	50.5	51.6	52.2
4H 2H	44.7	45.9	45.3	46.4	47.1	44.9	46.1	45.5	46.7	47.3
3H	47.1	48.1	47.7	48.7	49.4	47.4	48.4	48.0	49.0	49.7
4H	48.4	49.4	49.0	50.0	50.7	48.7	49.6	49.3	50.3	51.0
6H	49.8	50.7	50.5	51.3	52.0	50.0	50.9	50.7	51.5	52.3
8H	50.4	51.2	51.1	51.9	52.6	50.7	51.5	51.4	52.2	52.9
12H	51.0	51.7	51.7	52.4	53.2	51.4	52.1	52.0	52.8	53.6
8H 4H	48.9	49.7	49.6	50.4	51.2	49.2	50.0	49.8	50.6	51.4
6H	50.6	51.3	51.3	51.9	52.7	50.8	51.4	51.5	52.1	52.9
8H	51.4	52.0	52.1	52.7	53.5	51.6	52.2	52.3	52.9	53.7
12H	52.1	52.6	52.8	53.3	54.2	52.4	52.9	53.2	53.7	54.5
12H 4H	49.0	49.8	49.7	50.5	51.2	49.3	50.0	49.9	50.7	51.4
6H	50.8	51.4	51.5	52.1	52.9	51.0	51.5	51.7	52.3	53.1
8H	51.6	52.2	52.4	52.9	53.7	51.9	52.4	52.6	53.1	54.0
Variations with the observer position at spacings:										
S = 1.0H	+ 0.1 / - 0.1					+ 0.1 / - 0.1				
1.5H	+ 0.2 / - 0.3					+ 0.2 / - 0.3				
2.0H	+ 0.2 / - 0.3					+ 0.2 / - 0.3				

CIE Pub.117 Corrected 4096 lm Total Lamp Luminous Flux.(8log(F/F0) = 4.9)

C Range: 0 - 360DEG
 C Interval: 22.5DEG
 Test Speed: 10.0deg/s
 Temperature:25.1DEG
 Operators:ben
 Test Date:2019-11-18

γ Range: 0 - 180DEG
 γInterval: 1.0DEG
 Test System: GO-R5000_V2 SYSTEM V2.0.351
 Humidity:44%
 Test Distance:2.481m [K=1.0000]
 Remarks:

UTILIZATION FACTORS TABLE

Test:U:120.1V I:0.5050A P:59.61W PF:0.9830 Lamp Flux:4095.5x1 lm		
NAME: Led Light	TYPE:N/A	WEIGHT:N/A
SPEC.:N/A	DIM.: N/A	SERIAL No.:N/A
MFR.:	SUR.:N/A	Shielding Angle:N/A

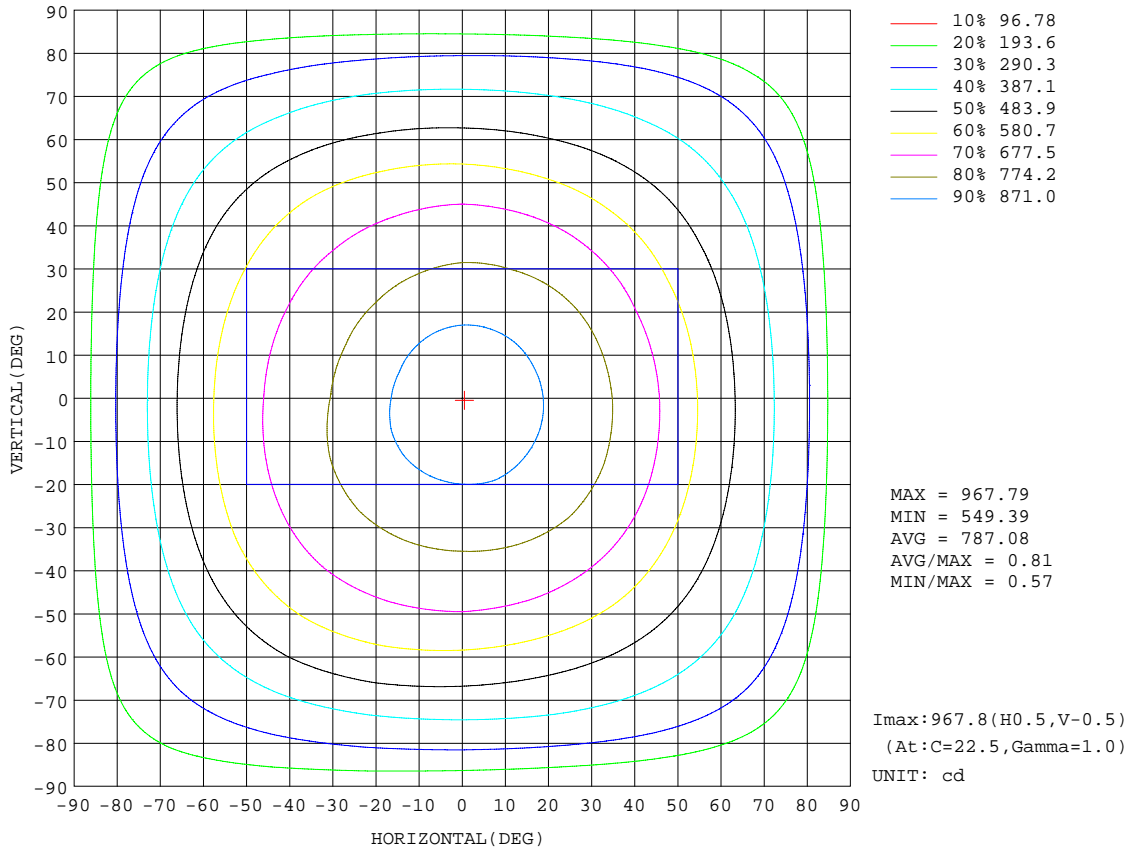
REFLECTANCE										
Ceiling	0.8	0.8	0.8	0.7	0.7	0.7	0.5	0.5	0.5	0
Walls	0.7	0.5	0.3	0.7	0.5	0.3	0.7	0.5	0.3	0
Working plane	0.2	0.2	0.2	0.2	0.2	0.2	0.2	0.2	0.2	0
ROOM INDEX	UTILIZATION FACTORS(PERCENT) $k(RI) \times RCR = 5$									
k = 0.60	48	36	29	47	35	29	45	34	28	21
0.80	58	45	37	56	44	36	53	42	35	27
1.00	65	53	45	63	52	44	60	52	43	34
1.25	73	60	52	70	59	51	66	56	49	39
1.50	78	66	58	75	64	56	70	61	54	43
2.00	85	74	67	82	72	65	76	68	62	50
2.50	90	80	72	86	77	70	80	72	67	54
3.00	93	84	77	90	82	75	83	76	71	58
4.00	98	91	84	94	87	82	87	81	77	62
5.00	101	94	89	97	91	86	89	85	81	65
ROOM INDEX	UF(total)									Direct
According to DIN EN 13032-2 2004			Suspended				SHRNOM = 1.25			

C Range: 0 - 360DEG
 C Interval: 22.5DEG
 Test Speed: 10.0deg/s
 Temperature:25.1DEG
 Operators:ben
 Test Date:2019-11-18

γ Range: 0 - 180DEG
 γ Interval: 1.0DEG
 Test System: GO-R5000_V2 SYSTEM V2.0.351
 Humidity:44%
 Test Distance:2.481m [K=1.0000]
 Remarks:

ISOCANDELA DIAGRAM

Test:U:120.1V I:0.5050A P:59.61W PF:0.9830 Lamp Flux:4095.5x1 lm		
NAME: Led Light	TYPE:N/A	WEIGHT:N/A
SPEC.:N/A	DIM.: N/A	SERIAL No.:N/A
MFR.:	SUR.:N/A	Shielding Angle:N/A

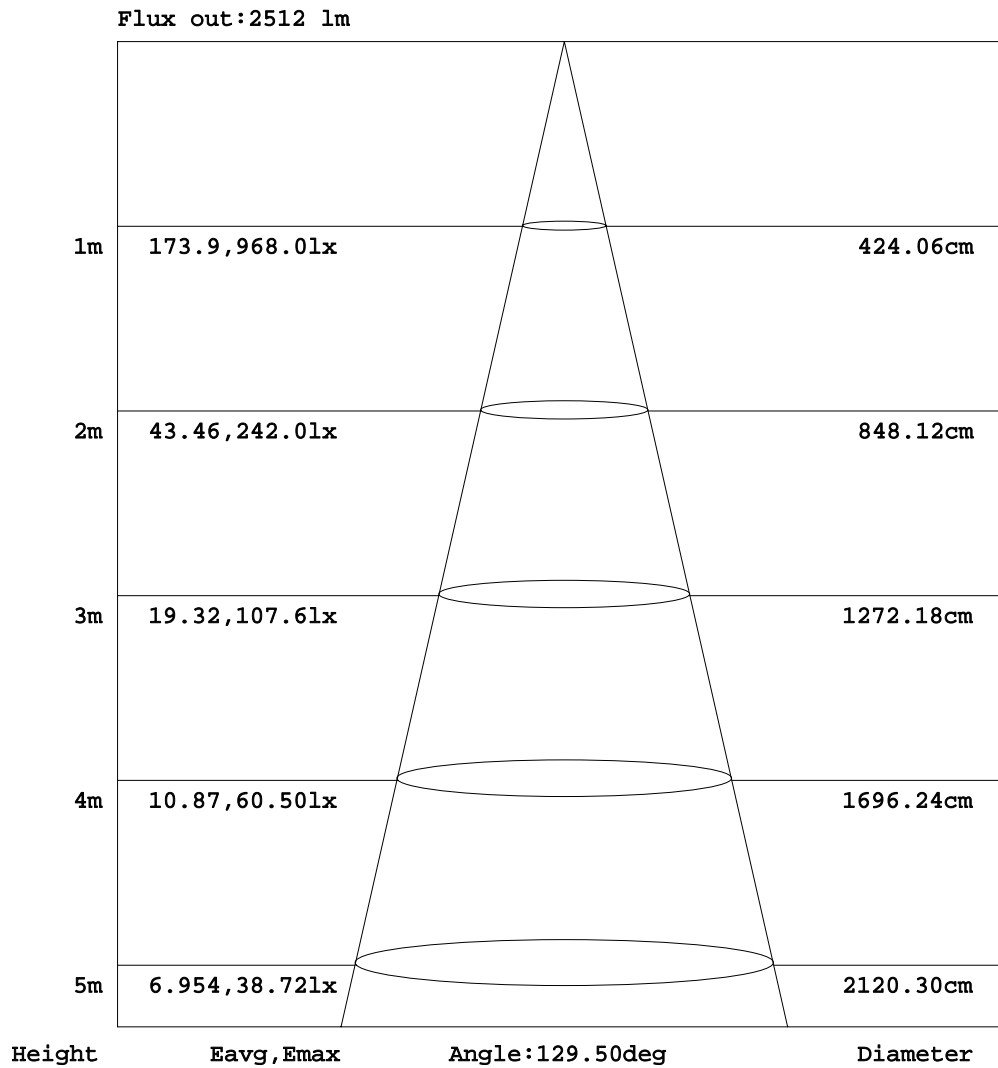


C Range: 0 - 360DEG
 C Interval: 22.5DEG
 Test Speed: 10.0deg/s
 Temperature:25.1DEG
 Operators:ben
 Test Date:2019-11-18

γ Range: 0 - 180DEG
 γ Interval: 1.0DEG
 Test System: GO-R5000_V2 SYSTEM V2.0.351
 Humidity:44%
 Test Distance:2.481m [K=1.0000]
 Remarks:

AAI Figure

Test:U:120.1V I:0.5050A P:59.61W PF:0.9830 Lamp Flux:4095.5x1 lm		
NAME: Led Light	TYPE:N/A	WEIGHT:N/A
SPEC.:N/A	DIM.: N/A	SERIAL No.:N/A
MFR.:	SUR.:N/A	Shielding Angle:N/A



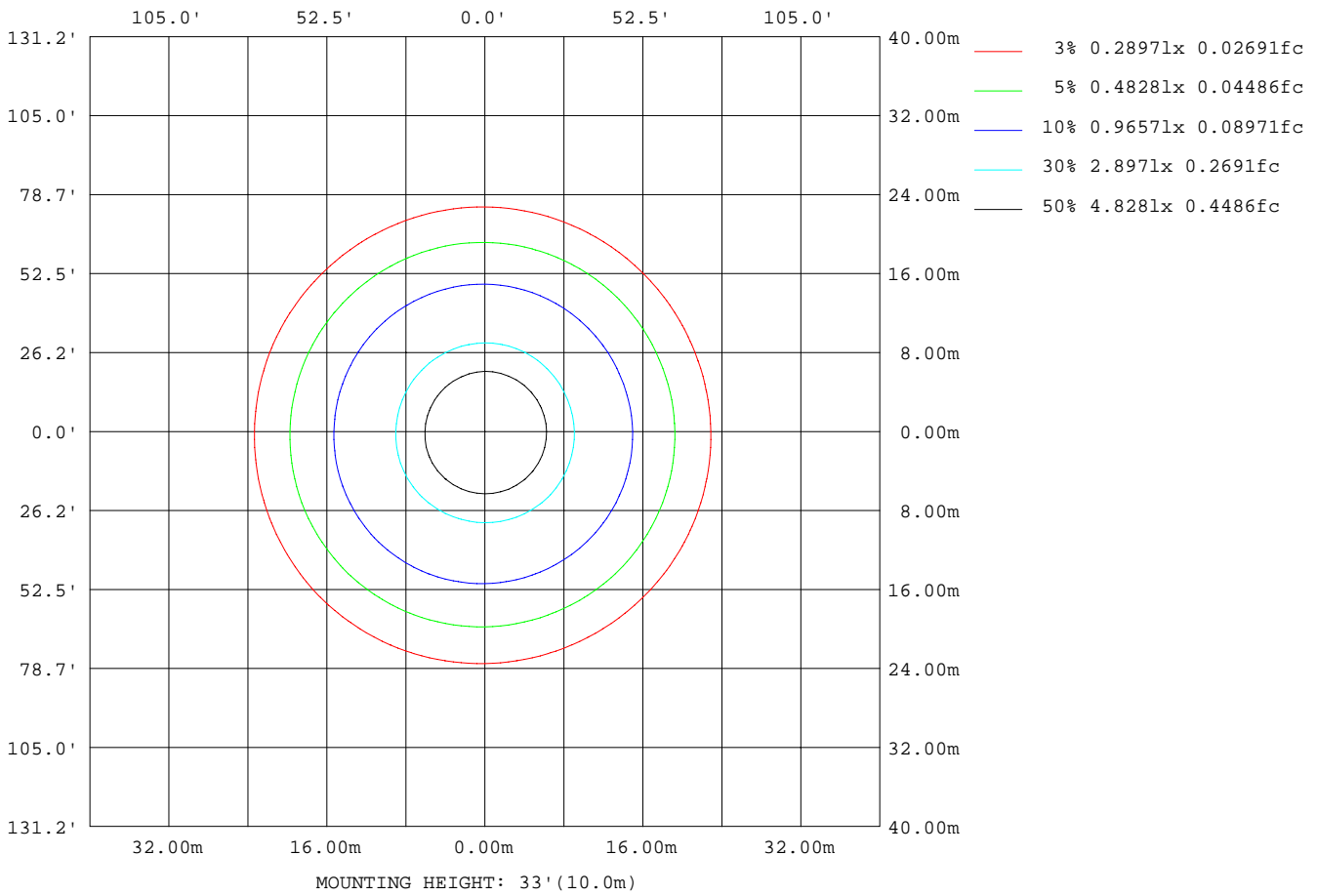
Note:The Curves indicate the illuminated area and the average illumination when the luminaire is at different distance.

C Range: 0 - 360DEG
 C Interval: 22.5DEG
 Test Speed: 10.0deg/s
 Temperature:25.1DEG
 Operators:ben
 Test Date:2019-11-18

γ Range: 0 - 180DEG
 γInterval: 1.0DEG
 Test System: GO-R5000_V2 SYSTEM V2.0.351
 Humidity:44%
 Test Distance:2.481m [K=1.0000]
 Remarks:

ISOLUX DIAGRAM

Test:U:120.1V I:0.5050A P:59.61W PF:0.9830 Lamp Flux:4095.5x1 lm		
NAME: Led Light	TYPE:N/A	WEIGHT:N/A
SPEC.:N/A	DIM.: N/A	SERIAL No.:N/A
MFR.:	SUR.:N/A	Shielding Angle:N/A



C Range: 0 - 360DEG
 C Interval: 22.5DEG
 Test Speed: 10.0deg/s
 Temperature:25.1DEG
 Operators:ben
 Test Date:2019-11-18

γ Range: 0 - 180DEG
 γInterval: 1.0DEG
 Test System: GO-R5000_V2 SYSTEM V2.0.351
 Humidity:44%
 Test Distance:2.481m [K=1.0000]
 Remarks:

LED Avg.L Report

Test:U:120.1V I:0.5050A P:59.61W PF:0.9830 Lamp Flux:4095.5x1 lm		
NAME: Led Light	TYPE:N/A	WEIGHT:N/A
SPEC.:N/A	DIM.: N/A	SERIAL No.:N/A
MFR.:	SUR.:N/A	Shielding Angle:N/A

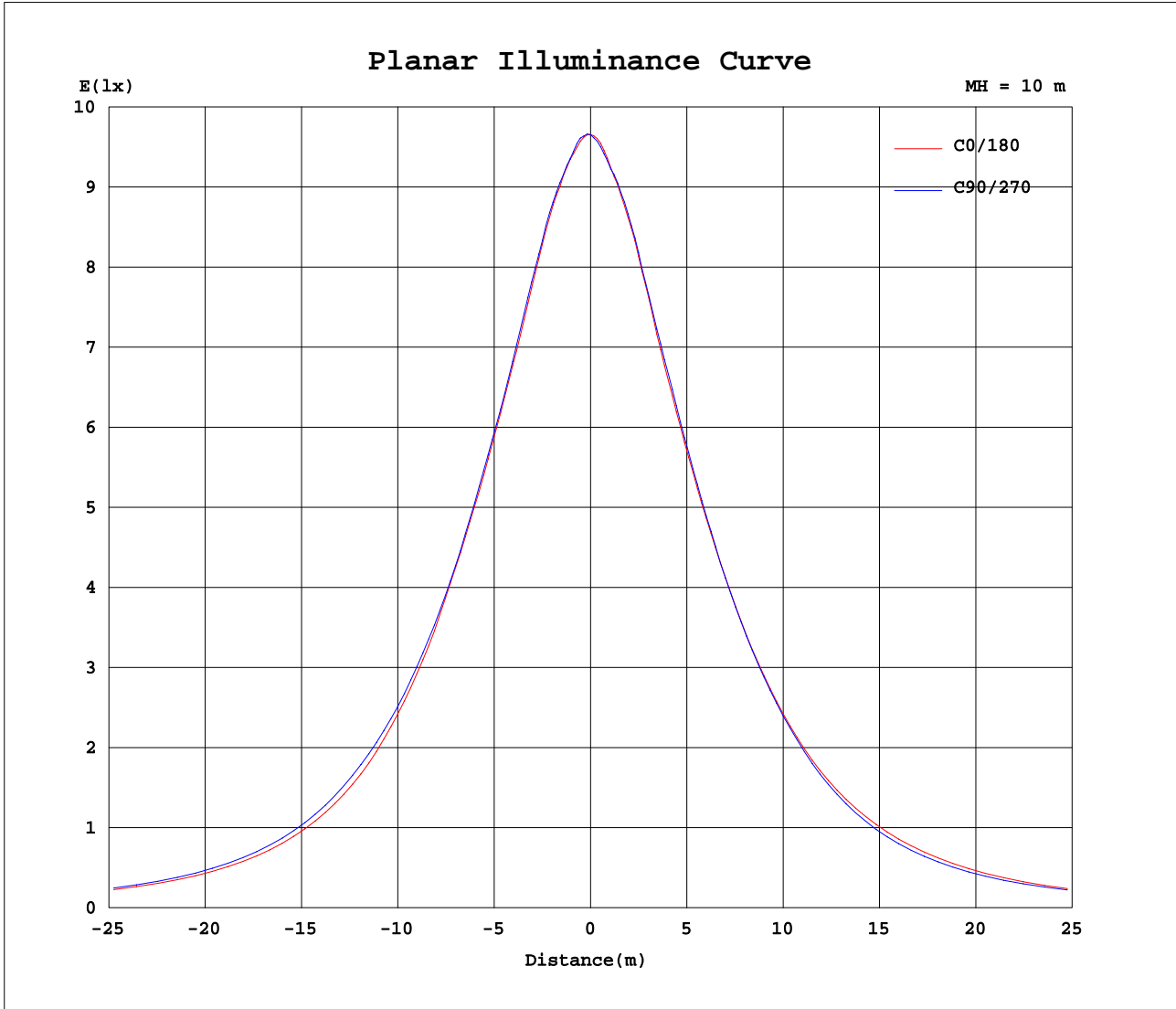
AvgL	cd/m2
L_0~180(65)av	11411864
L_0~180(75)av	13916156
L_0~180(85)av	22988166
L_90~270(65)av	11370161
L_90~270(75)av	14152518
L_90~270(85)av	23154414
L_45(65)av	11396793
L_45(75)av	14031031
L_45(85)av	23088877

Standard: GB/T 29293-2012

C Range: 0 - 360DEG
 C Interval: 22.5DEG
 Test Speed: 10.0deg/s
 Temperature:25.1DEG
 Operators:ben
 Test Date:2019-11-18

γ Range: 0 - 180DEG
 γ Interval: 1.0DEG
 Test System: GO-R5000_V2 SYSTEM V2.0.351
 Humidity:44%
 Test Distance:2.481m [K=1.0000]
 Remarks:

Planar Illuminance Curve



C Range: 0 - 360DEG
 C Interval: 22.5DEG
 Test Speed: 10.0deg/s
 Temperature: 25.1DEG
 Operators: ben
 Test Date: 2019-11-18

γ Range: 0 - 180DEG
 γ Interval: 1.0DEG
 Test System: GO-R5000_V2 SYSTEM V2.0.351
 Humidity: 44%
 Test Distance: 2.481m [K=1.0000]
 Remarks:

LUMINOUS DISTRIBUTION INTENSITY DATA

Test:U:120.1V I:0.5050A P:59.61W PF:0.9830 Lamp Flux:4095.5x1 lm		
NAME: Led Light	TYPE:N/A	WEIGHT:N/A
SPEC.:N/A	DIM.: N/A	SERIAL No.:N/A
MFR.:	SUR.:N/A	Shielding Angle:N/A

Table--1

UNIT: cd

C(DEG) \ γ (DEG)	0	22.5	45	67.5	90	112.5	135	157.5	180	202.5	225	247.5	270	292.5	315	337.5			
0	965	965	965	965	965	965	965	965	965	965	965	965	965	965	965	965			
5	953	957	956	956	956	954	953	948	947	946	944	943	943	944	947	950			
10	932	934	936	937	936	931	929	923	917	915	917	920	923	924	928	929			
15	900	905	908	909	906	904	902	895	881	879	879	881	885	889	893	895			
20	861	866	869	874	870	866	863	855	840	836	837	842	849	851	853	857			
25	830	834	837	838	836	831	830	822	807	803	803	807	815	819	823	825			
30	801	805	808	811	810	806	803	793	777	772	770	776	783	786	791	796			
35	773	780	781	780	777	776	774	765	750	744	740	745	750	751	757	765			
40	728	742	750	748	747	745	744	735	718	711	708	712	715	719	718	719			
45	685	698	705	713	711	709	709	701	684	677	671	672	677	673	670	670			
50	629	644	653	664	674	673	670	662	645	635	632	632	629	621	615	617			
55	575	588	599	609	620	629	628	619	604	594	588	578	573	564	560	563			
60	519	532	542	550	562	572	576	572	558	546	531	522	515	509	507	509			
65	465	477	485	493	504	513	517	511	499	488	472	463	457	452	452	456			
70	411	422	430	438	447	453	447	438	427	420	413	407	404	401	401	403			
75	360	370	375	380	381	382	378	371	361	356	350	349	351	348	350	353			
80	300	308	310	311	312	313	309	304	295	289	283	281	282	285	291	295			
85	188	196	203	211	220	226	226	223	213	206	196	189	183	180	179	180			
90	122	125	128	133	139	144	145	144	141	137	131	126	124	121	120	120			
95	126	125	124	126	132	138	140	139	137	134	129	124	123	123	126	126			
100	106	121	146	165	172	165	151	128	121	119	133	148	154	148	130	115			
105	108	105	134	143	152	151	145	106	82.1	108	130	124	119	123	127	93.7			
110	118	118	144	155	148	160	153	129	143	124	146	152	156	154	147	111			
115	155	155	168	176	185	172	164	152	153	143	160	160	164	167	163	156			
120	190	173	180	183	184	168	163	151	150	150	159	149	157	164	175	169			
125	159	167	176	178	170	153	154	142	132	133	156	136	146	156	177	153			
130	160	152	164	158	153	126	137	125	126	125	141	129	142	153	166	147			
135	109	129	136	124	122	98.0	110	103	87.1	107	102	113	126	139	128	122			
140	102	104	119	106	96.9	83.2	99.5	89.0	97.0	99.2	83.1	89.5	105	96.0	99.0	105			
145	81.4	83.8	81.7	76.5	74.8	70.9	73.5	76.7	78.3	71.6	72.1	61.1	65.5	66.1	82.5	74.1			
150	53.7	57.8	64.2	61.1	60.9	66.7	58.5	50.0	53.6	59.9	51.7	52.5	51.3	47.4	49.0	48.7			
155	36.5	44.0	38.6	43.2	45.6	52.1	43.6	37.6	33.1	27.8	40.3	42.5	43.8	36.9	38.8	42.8			
160	30.8	29.6	32.1	24.2	31.2	34.8	38.3	32.5	27.7	27.3	32.9	36.5	36.1	35.1	33.8	30.0			
165	23.4	23.5	21.8	21.0	26.1	23.2	25.5	26.0	21.1	20.9	22.1	28.0	30.4	32.1	25.5	25.0			
170	15.0	11.7	12.7	9.92	14.8	16.0	13.1	12.6	14.8	14.8	12.5	10.6	16.1	16.3	12.6	11.0			
175	13.8	11.8	10.2	10.8	9.77	9.29	7.29	6.22	9.02	9.06	9.24	7.87	8.19	8.28	9.49	9.56			
180	19.4	17.1	18.5	18.4	16.2	14.8	15.5	15.0	18.0	17.9	17.5	18.6	17.0	16.3	15.5	17.1			

C Range: 0 - 360DEG
 C Interval: 22.5DEG
 Test Speed: 10.0deg/s
 Temperature:25.1DEG
 Operators:ben
 Test Date:2019-11-18

γ Range: 0 - 180DEG
 γ Interval: 1.0DEG
 Test System: GO-R5000_V2 SYSTEM V2.0.351
 Humidity:44%
 Test Distance:2.481m [K=1.0000]
 Remarks: