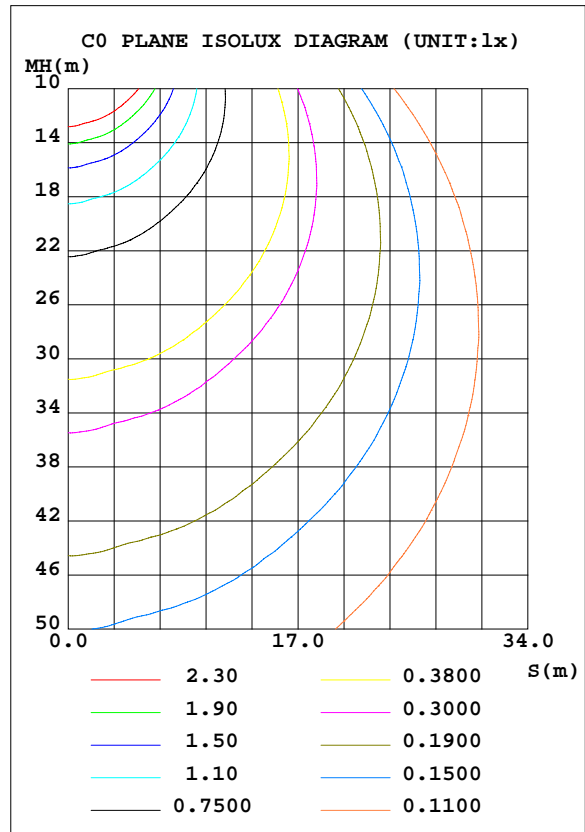
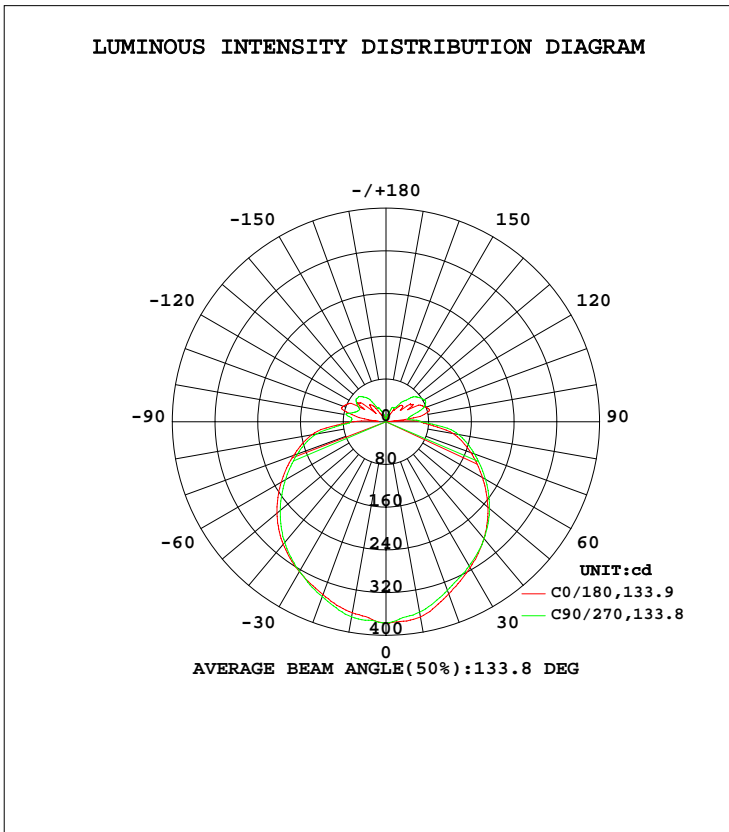


LUMINAIRE PHOTOMETRIC TEST REPORT

Test:U:120.1V I:0.2025A P:24.05W PF:0.9892 Lamp Flux:1688.15x1 lm		
NAME: Led Light	TYPE:N/A	WEIGHT:N/A
SPEC.:N/A	DIM.: N/A	SERIAL No.:N/A
MFR.:	SUR.:N/A	Shielding Angle:N/A

DATA OF LAMP		PHOTOMETRIC DATA			
MODEL	4601	Imax(cd)	377.2	S/MH(C0/180)	1.25
NOMINAL POWER(W)		LOR(%)	100.0	S/MH(C90/270)	1.24
RATED VOLTAGE(V)	120	TOTAL FLUX(lm)	1688.1	η UP, DN(C0-180)	9.5,40.9
NOMINAL FLUX(lm)	1688.15	CIE CLASS	SEMI-D.	η UP, DN(C180-360)	9.2,40.4
LAMPS INSIDE	1	η up(%)	18.7	CIBSE SHR NOM	1.50
TEST VOLTAGE(V)	120	η down(%)	81.3	CIBSE SHR MAX	1.50



C Range: 0 - 360DEG
 C Interval: 22.5DEG
 Test Speed: 10.0deg/s
 Temperature:25.1DEG
 Operators:ben
 Test Date:2019-11-18

γ Range: 0 - 180DEG
 γ Interval: 1.0DEG
 Test System: GO-R5000_V2 SYSTEM V2.0.351
 Humidity:44%
 Test Distance:2.481m [K=1.0000]
 Remarks:

ZONAL FLUX DIAGRAM

ZONAL FLUX DIAGRAM:

γ	C0	C45	C90	C135	C180	C225	C270	C315	γ	Φ zone	Φ total	%lum,lamp
10	363.1	367.2	371.1	372.8	371.2	368.3	362.0	360.2	0- 10	35.37	35.37	2.09,2.09
20	344.7	345.2	348.7	347.2	343.2	343.0	336.0	338.9	10- 20	100.6	135.9	8.05,8.05
30	324.2	323.2	323.7	319.7	315.3	316.7	311.9	317.7	20- 30	153.0	288.9	17.1,17.1
40	299.7	296.7	294.9	288.7	285.6	288.6	285.7	292.6	30- 40	191.8	480.7	28.5,28.5
50	266.6	262.7	258.5	252.4	249.2	252.6	252.9	259.7	40- 50	212.5	693.2	41.1,41.1
60	226.5	222.3	217.7	212.5	208.5	212.2	215.0	221.0	50- 60	212.5	905.6	53.6,53.6
70	183.9	181.2	176.4	171.9	169.1	172.7	176.5	180.2	60- 70	195.0	1101	65.2,65.2
80	141.0	139.0	131.9	129.3	127.5	131.9	137.6	138.8	70- 80	165.3	1266	75,75
90	60.81	64.87	67.03	68.81	66.46	65.09	65.38	63.52	80- 90	106.6	1373	81.3,81.3
100	55.79	51.55	75.10	54.47	69.58	40.03	43.01	33.30	90-100	50.20	1423	84.3,84.3
110	85.27	67.09	57.42	63.85	79.59	78.05	73.72	78.12	100-110	68.04	1491	88.3,88.3
120	46.03	74.59	61.40	69.60	51.09	72.61	82.67	75.15	110-120	68.24	1559	92.3,92.3
130	24.60	66.31	69.63	54.75	38.37	61.30	72.76	64.92	120-130	56.78	1616	95.7,95.7
140	40.32	39.17	59.54	33.45	38.11	44.72	50.18	40.44	130-140	38.85	1655	98,98
150	13.93	29.79	29.59	25.80	17.36	21.84	29.06	27.56	140-150	20.47	1675	99.2,99.2
160	11.01	17.11	20.18	14.11	5.687	11.91	20.40	13.52	150-160	9.734	1685	99.8,99.8
170	4.765	4.840	6.573	5.255	3.765	5.608	6.168	5.655	160-170	3.027	1688	100,100
180	4.881	2.307	1.483	3.536	4.526	3.866	2.657	2.621	170-180	0.2869	1688	100,100
DEG	LUMINOUS INTENSITY:cd Less than 25% Percent = 17.5 %								UNIT:lm			

Conical surface Flux(90deg): 585.66 lm

%lum = 34.7%
 %lamp = 34.7%

Conical surface Flux(120deg): 905.63 lm

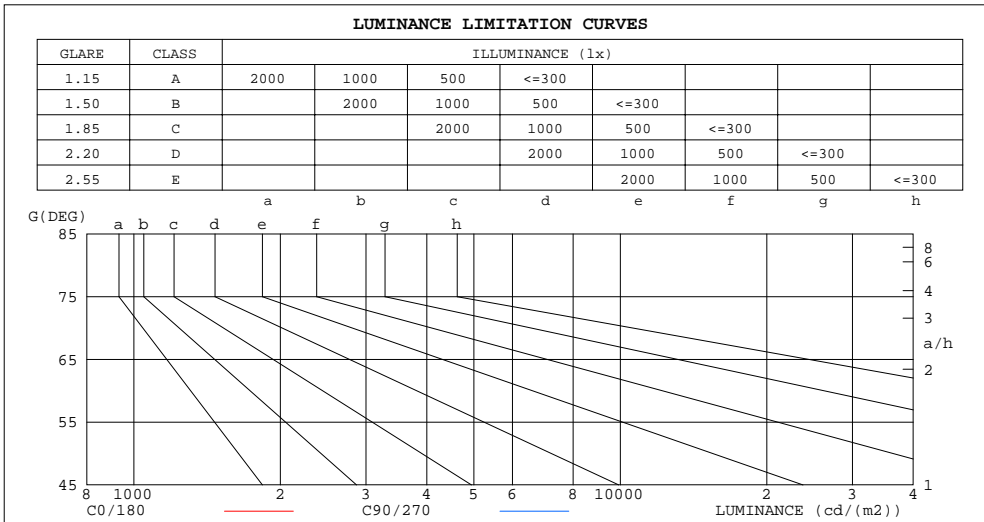
%lum = 53.6%
 %lamp = 53.6%

C Range: 0 - 360DEG
 C Interval: 22.5DEG
 Test Speed: 10.0deg/s
 Temperature:25.1DEG
 Operators:ben
 Test Date:2019-11-18

γ Range: 0 - 180DEG
 γInterval: 1.0DEG
 Test System: GO-R5000_V2 SYSTEM V2.0.351
 Humidity:44%
 Test Distance:2.481m [K=1.0000]
 Remarks:

LUMINANCE LIMITATION CURVES

Test:U:120.1V I:0.2025A P:24.05W PF:0.9892 Lamp Flux:1688.15x1 lm		
NAME: Led Light	TYPE:N/A	WEIGHT:N/A
SPEC.:N/A	DIM.: N/A	SERIAL No.:N/A
MFR.:	SUR.:N/A	Shielding Angle:N/A



LUMINANCE cd/(m2)		
G(DEG)	C0/180	C90/270
85	11724432	10207056
80	8131777	7600506
75	6308216	6022005
70	5384837	5159368
65	4865659	4655350
60	4536178	4355792
55	4315300	4152239
50	4153385	4022264
45	4022499	3927655

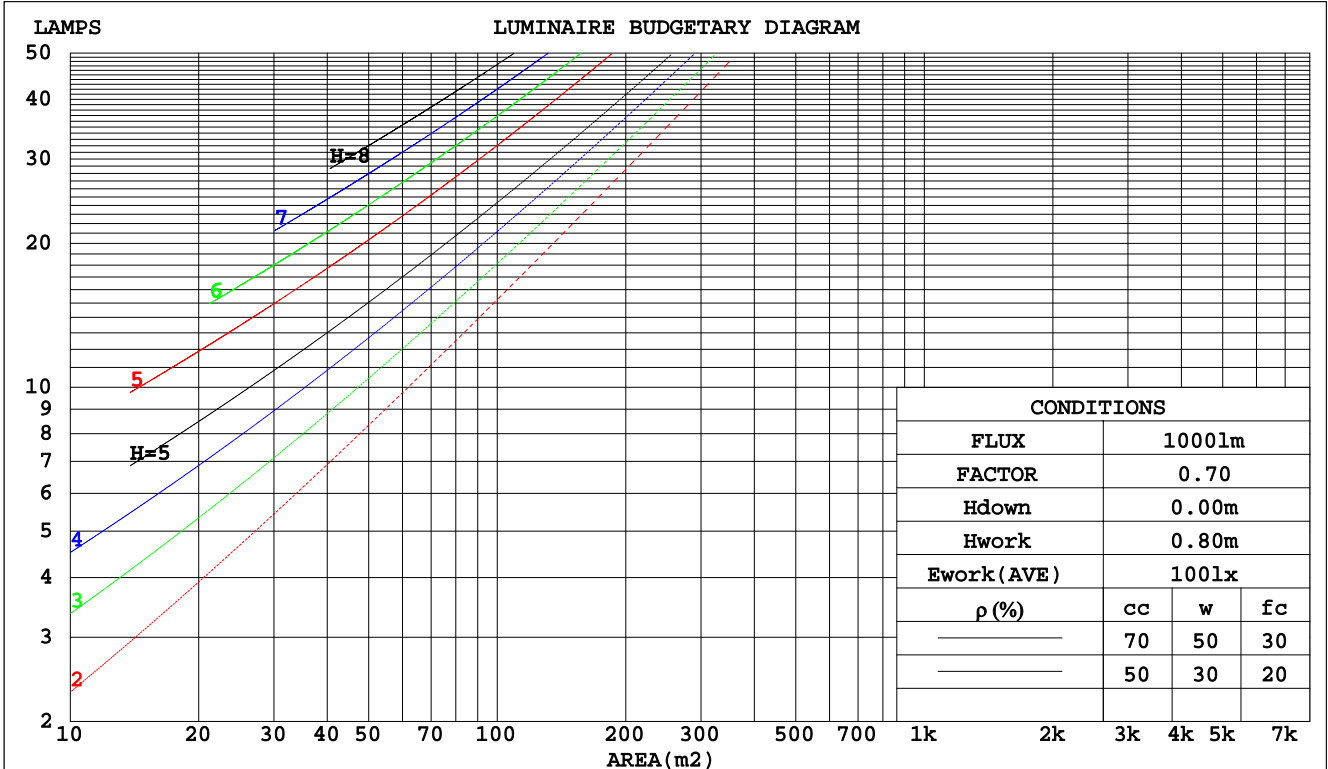
C Range: 0 - 360DEG
 C Interval: 22.5DEG
 Test Speed: 10.0deg/s
 Temperature:25.1DEG
 Operators:ben
 Test Date:2019-11-18

γ Range: 0 - 180DEG
 γ Interval: 1.0DEG
 Test System: GO-R5000_V2 SYSTEM V2.0.351
 Humidity:44%
 Test Distance:2.481m [K=1.0000]
 Remarks:

CU AND LUMINAIRE BUDGETARY ESTIMATE DIAGRAM

Test:U:120.1V I:0.2025A P:24.05W PF:0.9892 Lamp Flux:1688.15x1 lm		
NAME: Led Light	TYPE:N/A	WEIGHT:N/A
SPEC.:N/A	DIM.: N/A	SERIAL No.:N/A
MFR.:	SUR.:N/A	Shielding Angle:N/A

pcc	80%			70%			50%			30%			10%			0
	50%	30%	10%	50%	30%	10%	50%	30%	10%	50%	30%	10%	50%	30%	10%	0
pw																0
pfc	20%			20%			20%			20%			20%			0
RCR	RCR:Room Cavity Ratio						Coefficients of Utilization(CU)									
0.0	1.15	1.15	1.15	1.10	1.10	1.10	1.01	1.01	1.01	.92	.92	.92	.85	.85	.85	.81
1.0	.96	.91	.86	.92	.87	.83	.84	.80	.77	.77	.74	.71	.70	.68	.66	.62
2.0	.82	.74	.68	.78	.71	.65	.72	.66	.61	.66	.61	.57	.60	.56	.53	.50
3.0	.71	.62	.55	.68	.60	.53	.62	.56	.50	.57	.51	.47	.52	.48	.44	.41
4.0	.62	.53	.46	.60	.51	.44	.55	.48	.42	.50	.44	.39	.46	.41	.37	.34
5.0	.55	.46	.39	.53	.44	.38	.49	.41	.36	.45	.39	.34	.41	.36	.32	.29
6.0	.50	.40	.34	.48	.39	.33	.44	.36	.31	.40	.34	.29	.37	.32	.27	.25
7.0	.45	.36	.29	.43	.35	.29	.40	.32	.27	.37	.30	.26	.34	.28	.24	.22
8.0	.41	.32	.26	.39	.31	.25	.36	.29	.24	.33	.27	.23	.31	.26	.21	.19
9.0	.37	.29	.23	.36	.28	.23	.33	.26	.21	.31	.25	.20	.29	.23	.19	.17
10.0	.34	.26	.21	.33	.25	.20	.31	.24	.19	.28	.23	.18	.26	.21	.17	.16



C Range: 0 - 360DEG
 C Interval: 22.5DEG
 Test Speed: 10.0deg/s
 Temperature:25.1DEG
 Operators:ben
 Test Date:2019-11-18

γ Range: 0 - 180DEG
 γ Interval: 1.0DEG
 Test System: GO-R5000_V2 SYSTEM V2.0.351
 Humidity:44%
 Test Distance:2.481m [K=1.0000]
 Remarks:

WEC AND CCEC

Test:U:120.1V I:0.2025A P:24.05W PF:0.9892 Lamp Flux:1688.15x1 lm		
NAME: Led Light	TYPE:N/A	WEIGHT:N/A
SPEC.:N/A	DIM.: N/A	SERIAL No.:N/A
MFR.:	SUR.:N/A	Shielding Angle:N/A

ρcc	80%			70%			50%			30%			10%			0
ρw	50%	30%	10%	50%	30%	10%	50%	30%	10%	50%	30%	10%	50%	30%	10%	0
ρfc	20%			20%			20%			20%			20%			0
RCR	RCR:Room Cavity Ratio						Wall Exitance Coefficients(WEC)									
0.0																
1.0	.375	.214	.068	.363	.207	.066	.338	.194	.062	.316	.182	.059	.296	.171	.055	
2.0	.329	.180	.055	.317	.175	.054	.296	.164	.051	.275	.155	.048	.257	.145	.046	
3.0	.294	.156	.047	.283	.152	.046	.263	.143	.043	.245	.134	.041	.228	.126	.039	
4.0	.265	.138	.040	.256	.134	.040	.238	.126	.038	.221	.119	.036	.205	.112	.034	
5.0	.241	.123	.036	.233	.119	.035	.216	.113	.033	.201	.106	.032	.187	.100	.030	
6.0	.221	.111	.032	.213	.108	.031	.198	.102	.030	.185	.096	.028	.172	.090	.027	
7.0	.204	.101	.029	.197	.098	.028	.183	.093	.027	.171	.087	.025	.159	.082	.024	
8.0	.189	.093	.026	.183	.090	.025	.170	.085	.024	.159	.080	.023	.147	.076	.022	
9.0	.176	.085	.024	.170	.083	.023	.159	.079	.022	.148	.074	.021	.138	.070	.020	
10.0	.165	.079	.022	.160	.077	.022	.149	.073	.021	.139	.069	.020	.129	.065	.019	

ρcc	80%			70%			50%			30%			10%			0
ρw	50%	30%	10%	50%	30%	10%	50%	30%	10%	50%	30%	10%	50%	30%	10%	0
ρfc	20%			20%			20%			20%			20%			0
RCR	RCR:Room Cavity Ratio						Ceiling Cavity Exitance Coefficients(CCEC)									
0.0	.333	.333	.333	.285	.285	.285	.194	.194	.194	.112	.112	.112	.036	.036	.036	
1.0	.328	.299	.273	.281	.257	.235	.192	.177	.162	.111	.102	.094	.035	.033	.031	
2.0	.322	.276	.238	.276	.238	.206	.189	.165	.144	.109	.096	.084	.035	.031	.027	
3.0	.314	.260	.216	.270	.224	.188	.185	.156	.132	.107	.091	.078	.034	.030	.025	
4.0	.307	.247	.202	.263	.214	.175	.181	.149	.124	.105	.087	.073	.034	.028	.024	
5.0	.299	.238	.192	.257	.206	.167	.177	.144	.118	.103	.084	.070	.033	.028	.023	
6.0	.292	.230	.185	.251	.199	.161	.173	.139	.114	.100	.082	.068	.032	.027	.022	
7.0	.285	.223	.180	.245	.193	.157	.169	.136	.111	.098	.080	.066	.032	.026	.022	
8.0	.278	.217	.176	.239	.189	.153	.166	.132	.109	.096	.078	.065	.031	.026	.021	
9.0	.272	.213	.173	.234	.185	.151	.162	.130	.107	.095	.077	.064	.031	.025	.021	
10.0	.266	.209	.170	.229	.181	.149	.159	.127	.106	.093	.075	.063	.030	.025	.021	

C Range: 0 - 360DEG
 C Interval: 22.5DEG
 Test Speed: 10.0deg/s
 Temperature:25.1DEG
 Operators:ben
 Test Date:2019-11-18

γ Range: 0 - 180DEG
 γ Interval: 1.0DEG
 Test System: GO-R5000_V2 SYSTEM V2.0.351
 Humidity:44%
 Test Distance:2.481m [K=1.0000]
 Remarks:

UGR(Unified Glare Rating) Table

Test:U:120.1V I:0.2025A P:24.05W PF:0.9892 Lamp Flux:1688.15x1 lm										
NAME: Led Light					TYPE:N/A			WEIGHT:N/A		
SPEC.:N/A					DIM.: N/A			SERIAL No.:N/A		
MFR.:					SUR.:N/A			Shielding Angle:N/A		
ceiling/cavity	0.7	0.7	0.5	0.5	0.3	0.7	0.7	0.5	0.5	0.3
walls	0.5	0.3	0.5	0.3	0.3	0.5	0.3	0.5	0.3	0.3
working plane	0.2	0.2	0.2	0.2	0.2	0.2	0.2	0.2	0.2	0.2
Room dimensions	Viewed crosswise					Viewed endwise				
x = 2H y = 2H	41.0	42.4	41.5	42.9	43.4	40.8	42.2	41.3	42.7	43.3
3H	43.3	44.6	43.9	45.1	45.7	43.1	44.4	43.7	44.9	45.5
4H	44.5	45.7	45.1	46.3	46.9	44.3	45.5	44.9	46.1	46.7
6H	45.9	47.0	46.5	47.6	48.2	45.6	46.7	46.2	47.3	48.0
8H	46.6	47.7	47.2	48.3	48.9	46.2	47.3	46.8	47.9	48.6
12H	47.2	48.3	47.8	48.9	49.6	46.8	47.8	47.4	48.4	49.1
4H 2H	41.7	42.9	42.3	43.5	44.1	41.6	42.8	42.2	43.4	44.0
3H	44.3	45.3	44.9	45.9	46.6	44.1	45.2	44.7	45.8	46.4
4H	45.7	46.6	46.3	47.3	48.0	45.5	46.5	46.1	47.1	47.8
6H	47.2	48.0	47.8	48.7	49.4	47.0	47.8	47.6	48.5	49.2
8H	48.0	48.8	48.6	49.4	50.2	47.7	48.5	48.3	49.1	49.9
12H	48.7	49.5	49.4	50.1	50.9	48.3	49.0	49.0	49.7	50.5
8H 4H	46.2	47.0	46.9	47.7	48.4	46.1	46.9	46.7	47.5	48.3
6H	48.0	48.6	48.7	49.3	50.2	47.8	48.5	48.5	49.2	50.0
8H	48.9	49.5	49.7	50.3	51.1	48.6	49.2	49.4	50.0	50.8
12H	49.9	50.4	50.6	51.1	52.0	49.4	50.0	50.2	50.7	51.6
12H 4H	46.3	47.0	47.0	47.7	48.5	46.2	46.9	46.9	47.6	48.4
6H	48.2	48.8	48.9	49.5	50.3	48.0	48.6	48.7	49.3	50.2
8H	49.2	49.8	50.0	50.5	51.3	49.0	49.5	49.7	50.2	51.1
Variations with the observer position at spacings:										
S = 1.0H	+ 0.1 / - 0.1					+ 0.1 / - 0.1				
1.5H	+ 0.2 / - 0.3					+ 0.2 / - 0.2				
2.0H	+ 0.2 / - 0.3					+ 0.2 / - 0.3				

CIE Pub.117 Corrected 1688 lm Total Lamp Luminous Flux.(8log(F/F0) = 1.8)

C Range: 0 - 360DEG
 C Interval: 22.5DEG
 Test Speed: 10.0deg/s
 Temperature:25.1DEG
 Operators:ben
 Test Date:2019-11-18

γ Range: 0 - 180DEG
 γInterval: 1.0DEG
 Test System: GO-R5000_V2 SYSTEM V2.0.351
 Humidity:44%
 Test Distance:2.481m [K=1.0000]
 Remarks:

UTILIZATION FACTORS TABLE

Test:U:120.1V I:0.2025A P:24.05W PF:0.9892 Lamp Flux:1688.15x1 lm		
NAME: Led Light	TYPE:N/A	WEIGHT:N/A
SPEC.:N/A	DIM.: N/A	SERIAL No.:N/A
MFR.:	SUR.:N/A	Shielding Angle:N/A

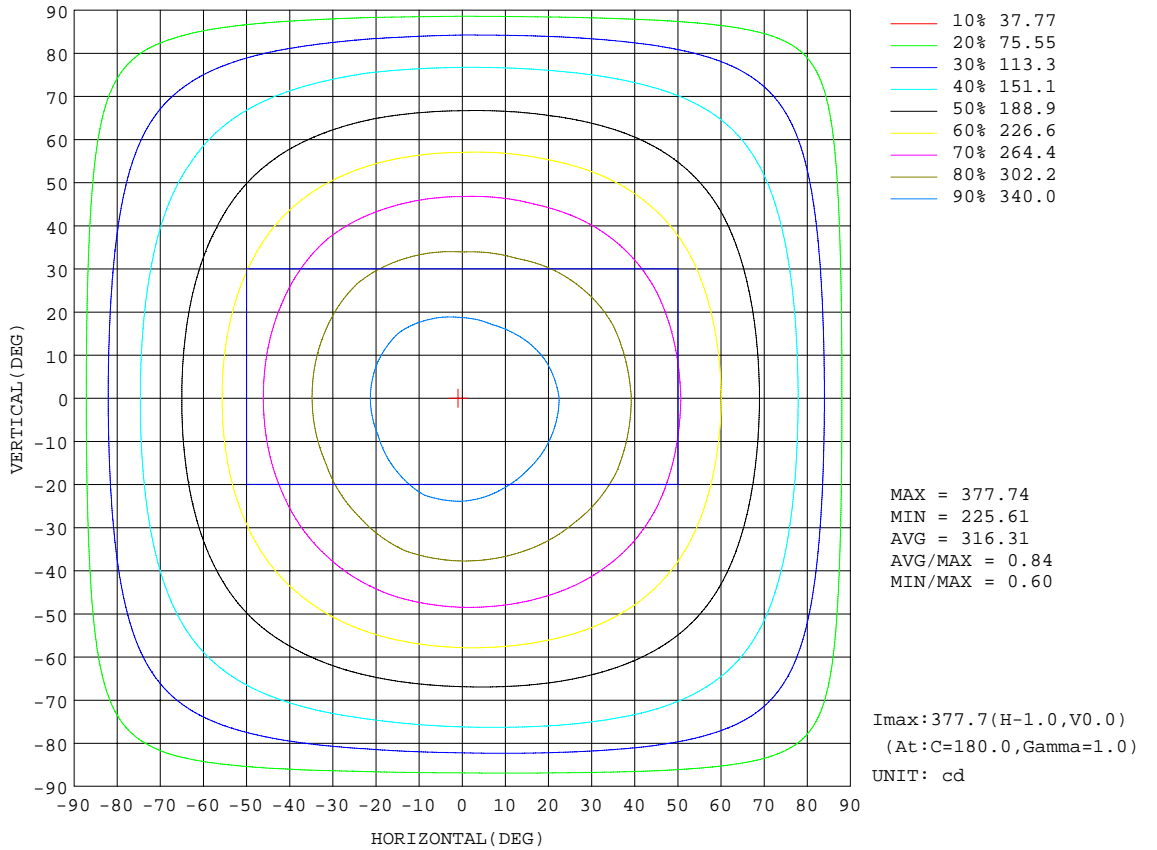
REFLECTANCE										
Ceiling	0.8	0.8	0.8	0.7	0.7	0.7	0.5	0.5	0.5	0
Walls	0.7	0.5	0.3	0.7	0.5	0.3	0.7	0.5	0.3	0
Working plane	0.2	0.2	0.2	0.2	0.2	0.2	0.2	0.2	0.2	0
ROOM INDEX	UTILIZATION FACTORS(PERCENT) $k(RI) \times RCR = 5$									
k = 0.60	48	36	28	47	35	28	45	34	27	21
0.80	57	44	36	55	43	36	52	42	35	27
1.00	65	52	44	63	51	43	59	51	42	33
1.25	72	59	51	69	58	50	65	55	48	38
1.50	77	65	57	74	63	56	69	60	53	42
2.00	84	74	66	81	71	64	75	67	61	49
2.50	89	79	71	85	76	69	79	72	66	53
3.00	93	84	77	89	81	74	82	75	70	56
4.00	97	90	84	93	87	81	86	80	76	61
5.00	100	94	88	96	90	85	88	84	80	64
ROOM INDEX	UF(total)									Direct
According to DIN EN 13032-2 2004			Suspended				SHRNOM = 1.25			

C Range: 0 - 360DEG
 C Interval: 22.5DEG
 Test Speed: 10.0deg/s
 Temperature:25.1DEG
 Operators:ben
 Test Date:2019-11-18

γ Range: 0 - 180DEG
 γ Interval: 1.0DEG
 Test System: GO-R5000_V2 SYSTEM V2.0.351
 Humidity:44%
 Test Distance:2.481m [K=1.0000]
 Remarks:

ISOCANDELA DIAGRAM

Test:U:120.1V I:0.2025A P:24.05W PF:0.9892 Lamp Flux:1688.15x1 lm		
NAME: Led Light	TYPE:N/A	WEIGHT:N/A
SPEC.:N/A	DIM.: N/A	SERIAL No.:N/A
MFR.:	SUR.:N/A	Shielding Angle:N/A

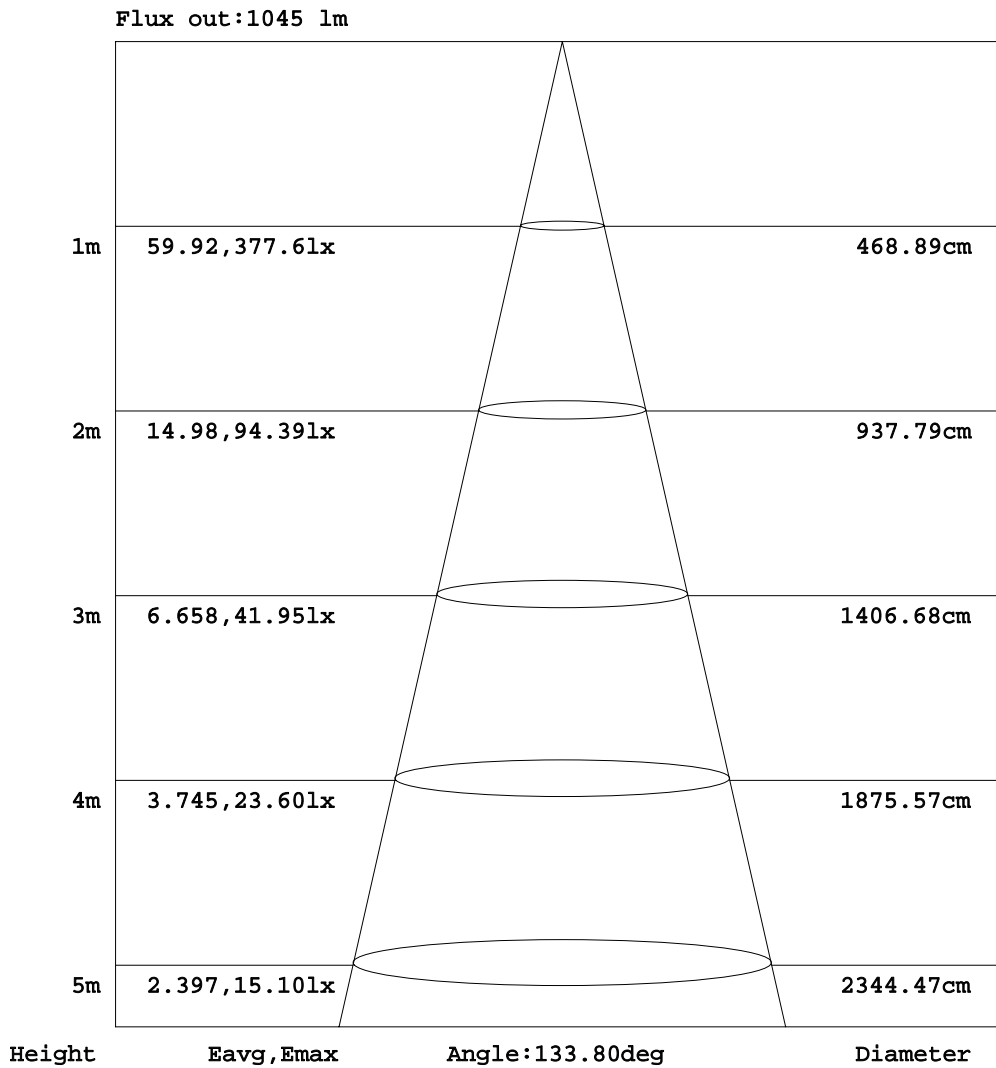


C Range: 0 - 360DEG
 C Interval: 22.5DEG
 Test Speed: 10.0deg/s
 Temperature: 25.1DEG
 Operators: ben
 Test Date: 2019-11-18

γ Range: 0 - 180DEG
 γ Interval: 1.0DEG
 Test System: GO-R5000_V2 SYSTEM V2.0.351
 Humidity: 44%
 Test Distance: 2.481m [K=1.0000]
 Remarks:

AAI Figure

Test:U:120.1V I:0.2025A P:24.05W PF:0.9892 Lamp Flux:1688.15x1 lm		
NAME: Led Light	TYPE:N/A	WEIGHT:N/A
SPEC.:N/A	DIM.: N/A	SERIAL No.:N/A
MFR.:	SUR.:N/A	Shielding Angle:N/A



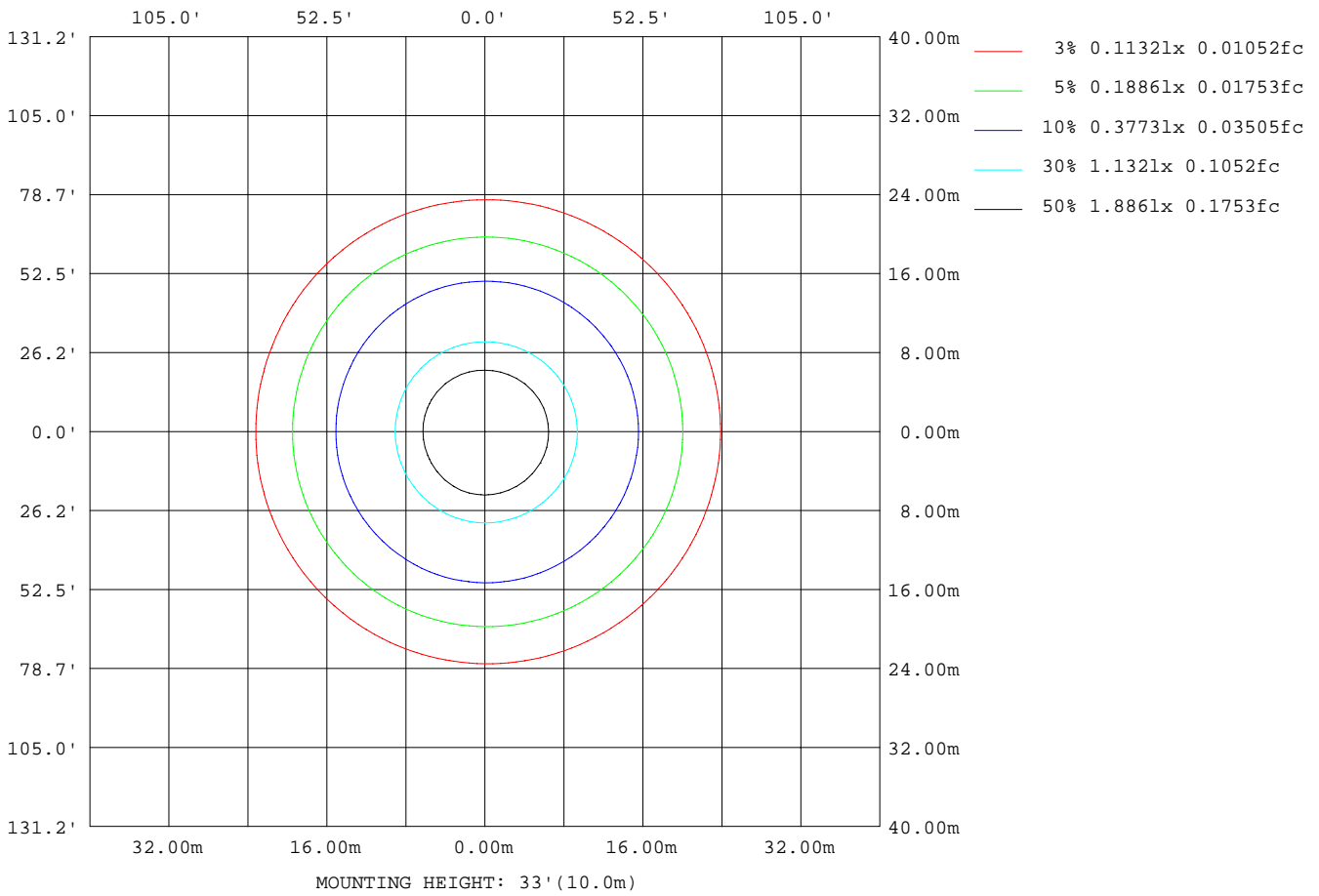
Note:The Curves indicate the illuminated area and the average illumination when the luminaire is at different distance.

C Range: 0 - 360DEG
 C Interval: 22.5DEG
 Test Speed: 10.0deg/s
 Temperature:25.1DEG
 Operators:ben
 Test Date:2019-11-18

γ Range: 0 - 180DEG
 γInterval: 1.0DEG
 Test System: GO-R5000_V2 SYSTEM V2.0.351
 Humidity:44%
 Test Distance:2.481m [K=1.0000]
 Remarks:

ISOLUX DIAGRAM

Test:U:120.1V I:0.2025A P:24.05W PF:0.9892 Lamp Flux:1688.15x1 lm		
NAME: Led Light	TYPE:N/A	WEIGHT:N/A
SPEC.:N/A	DIM.: N/A	SERIAL No.:N/A
MFR.:	SUR.:N/A	Shielding Angle:N/A



C Range: 0 - 360DEG
 C Interval: 22.5DEG
 Test Speed: 10.0deg/s
 Temperature:25.1DEG
 Operators:ben
 Test Date:2019-11-18

γ Range: 0 - 180DEG
 γ Interval: 1.0DEG
 Test System: GO-R5000_V2 SYSTEM V2.0.351
 Humidity:44%
 Test Distance:2.481m [K=1.0000]
 Remarks:

LED Avg.L Report

Test:U:120.1V I:0.2025A P:24.05W PF:0.9892 Lamp Flux:1688.15x1 lm		
NAME: Led Light	TYPE:N/A	WEIGHT:N/A
SPEC.:N/A	DIM.: N/A	SERIAL No.:N/A
MFR.:	SUR.:N/A	Shielding Angle:N/A

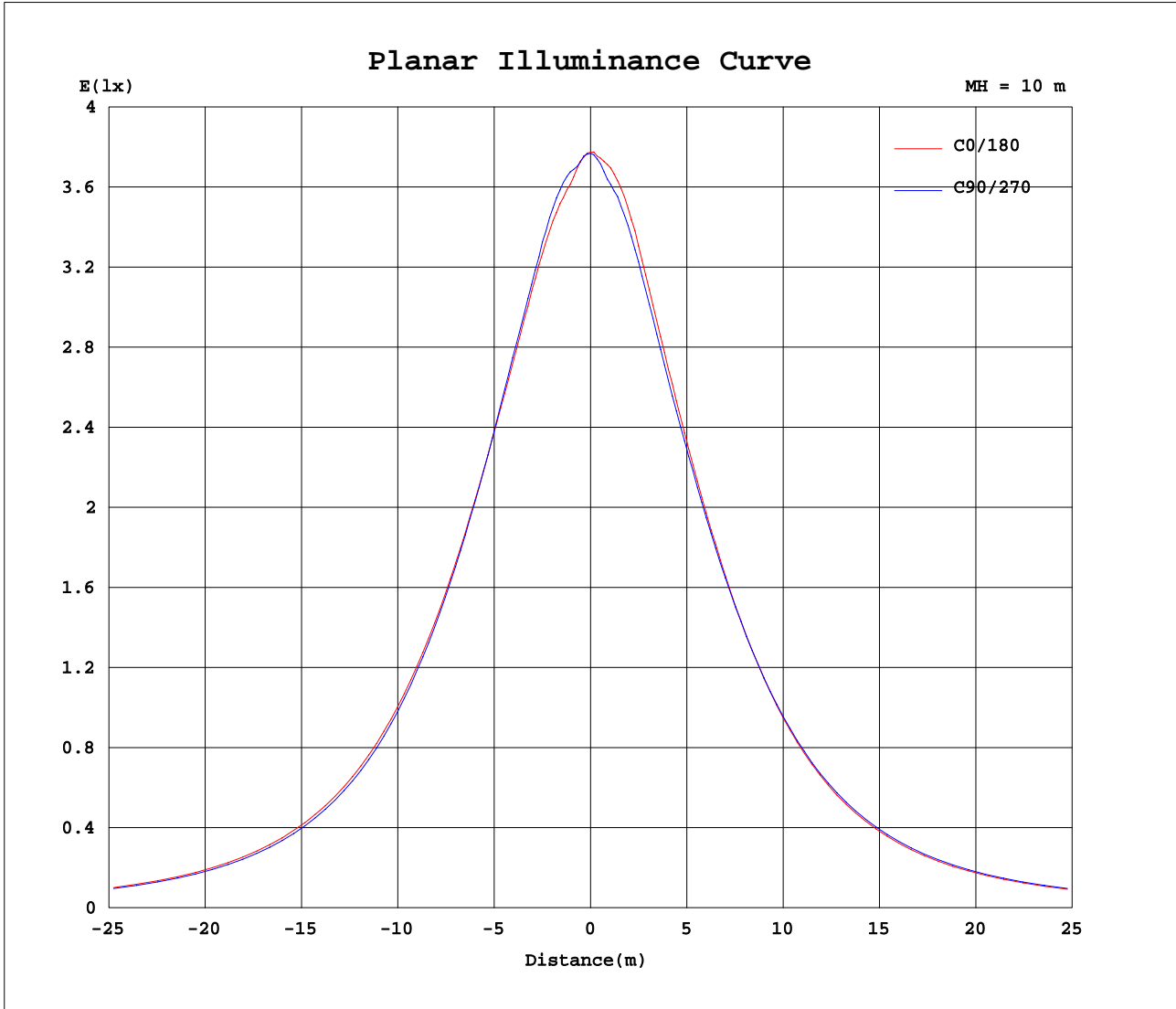
AvgL	cd/m2
L_0~180(65)av	4661356
L_0~180(75)av	6036460
L_0~180(85)av	10981960
L_90~270(65)av	4641086
L_90~270(75)av	6058144
L_90~270(85)av	11140953
L_45(65)av	4653543
L_45(75)av	6055297
L_45(85)av	11035754

Standard: GB/T 29293-2012

C Range: 0 - 360DEG
 C Interval: 22.5DEG
 Test Speed: 10.0deg/s
 Temperature:25.1DEG
 Operators:ben
 Test Date:2019-11-18

γ Range: 0 - 180DEG
 γ Interval: 1.0DEG
 Test System: GO-R5000_V2 SYSTEM V2.0.351
 Humidity:44%
 Test Distance:2.481m [K=1.0000]
 Remarks:

Planar Illuminance Curve



C Range: 0 - 360DEG
 C Interval: 22.5DEG
 Test Speed: 10.0deg/s
 Temperature: 25.1DEG
 Operators: ben
 Test Date: 2019-11-18

γ Range: 0 - 180DEG
 γ Interval: 1.0DEG
 Test System: GO-R5000_V2 SYSTEM V2.0.351
 Humidity: 44%
 Test Distance: 2.481m [K=1.0000]
 Remarks:

LUMINOUS DISTRIBUTION INTENSITY DATA

Test:U:120.1V I:0.2025A P:24.05W PF:0.9892 Lamp Flux:1688.15x1 lm		
NAME: Led Light	TYPE:N/A	WEIGHT:N/A
SPEC.:N/A	DIM.: N/A	SERIAL No.:N/A
MFR.:	SUR.:N/A	Shielding Angle:N/A

Table--1

UNIT: cd

C(DEG) γ (DEG)	0	22.5	45	67.5	90	112.5	135	157.5	180	202.5	225	247.5	270	292.5	315	337.5			
0	377	377	377	377	377	377	377	377	377	377	377	377	377	377	377	377			
5	369	370	372	373	373	374	374	376	375	375	373	370	368	369	367	368			
10	363	365	367	369	371	373	373	372	371	370	368	366	362	360	360	362			
15	356	356	358	359	361	363	361	360	358	358	357	353	350	349	351	354			
20	345	345	345	347	349	350	347	344	343	343	343	339	336	336	339	343			
25	335	334	334	336	337	338	333	330	329	329	330	326	323	324	328	334			
30	324	324	323	322	324	324	320	316	315	316	317	314	312	313	318	322			
35	313	313	311	310	310	310	305	302	301	302	304	301	300	301	306	312			
40	300	300	297	295	295	294	289	286	286	286	289	286	286	288	293	298			
45	284	283	281	278	278	276	271	269	268	269	272	270	270	272	277	283			
50	267	266	263	260	258	256	252	250	249	250	253	253	253	255	260	265			
55	247	246	243	240	238	236	232	231	229	230	233	234	234	237	241	246			
60	226	225	222	220	218	216	212	210	209	210	212	214	215	217	221	226			
65	205	204	202	199	197	195	192	190	189	189	193	194	196	197	201	205			
70	184	183	181	179	176	174	172	171	169	169	173	176	177	177	180	183			
75	163	162	161	159	156	154	152	151	149	150	154	157	158	158	160	163			
80	141	140	139	136	132	130	129	129	128	128	132	136	138	138	139	140			
85	102	99.3	95.6	91.9	88.9	88.0	88.5	89.8	89.4	91.5	96.1	102	105	106	105	103			
90	60.8	63.2	64.9	66.1	67.0	68.2	68.8	68.6	66.5	65.2	65.1	64.9	65.4	64.8	63.5	61.5			
95	21.0	9.60	45.1	60.4	64.2	63.5	50.5	9.35	3.82	4.72	27.1	42.7	44.7	38.1	21.8	20.7			
100	55.8	40.4	51.5	68.0	75.1	68.0	54.5	55.6	69.6	57.9	40.0	40.1	43.0	38.2	33.3	48.1			
105	81.2	74.3	65.3	64.8	65.6	60.2	61.5	73.7	84.6	66.4	69.6	54.6	53.1	56.0	66.2	64.2			
110	85.3	75.8	67.1	56.2	57.4	52.2	63.8	71.2	79.6	65.1	78.0	68.3	73.7	69.2	78.1	65.1			
115	79.0	73.9	73.6	53.0	54.5	50.0	68.3	69.2	72.8	63.0	77.2	75.1	81.9	75.6	78.7	63.6			
120	46.0	70.8	74.6	59.9	61.4	57.5	69.6	64.5	51.1	54.7	72.6	73.8	82.7	74.3	75.2	55.6			
125	61.4	57.7	72.8	66.5	68.5	63.2	64.6	55.7	55.5	56.4	67.1	70.3	78.1	70.5	70.4	58.2			
130	24.6	46.8	66.3	66.8	69.6	60.2	54.8	45.2	38.4	46.6	61.3	66.8	72.8	66.0	64.9	45.0			
135	42.5	46.1	57.7	62.6	66.9	53.9	46.0	39.2	43.1	43.6	39.1	60.5	61.4	55.0	39.7	45.1			
140	40.3	42.8	39.2	56.4	59.5	48.7	33.4	34.4	38.1	32.5	44.7	40.4	50.2	38.8	40.4	34.2			
145	20.0	21.7	35.5	35.5	45.6	34.4	35.3	25.6	26.7	32.4	34.5	32.7	33.8	31.7	31.5	25.0			
150	13.9	24.2	29.8	32.3	29.6	30.8	25.8	16.2	17.4	16.1	21.8	30.0	29.1	31.8	27.6	17.3			
155	14.2	17.5	24.6	29.5	25.3	27.2	21.1	14.7	12.0	12.7	18.4	25.2	29.9	31.5	23.8	17.4			
160	11.0	12.6	17.1	20.3	20.2	20.3	14.1	10.3	5.69	7.01	11.9	20.1	20.4	16.2	13.5	19.9			
165	8.39	7.45	7.43	6.97	11.9	11.2	10.4	8.42	8.07	8.38	7.31	12.9	13.7	13.8	14.9	13.4			
170	4.77	4.06	4.84	3.06	6.57	5.92	5.26	3.75	3.77	3.81	5.61	6.12	6.17	5.89	5.65	7.42			
175	2.11	1.99	2.03	3.27	2.91	2.92	2.56	1.49	1.29	1.29	1.62	1.81	2.06	1.80	1.61	1.63			
180	4.88	3.37	2.31	2.01	1.48	2.29	3.54	5.11	4.53	4.50	3.87	3.26	2.66	2.38	2.62	2.66			

C Range: 0 - 360DEG
 C Interval: 22.5DEG
 Test Speed: 10.0deg/s
 Temperature:25.1DEG
 Operators:ben
 Test Date:2019-11-18

γ Range: 0 - 180DEG
 γ Interval: 1.0DEG
 Test System:GO-R5000_V2 SYSTEM V2.0.351
 Humidity:44%
 Test Distance:2.481m [K=1.0000]
 Remarks: