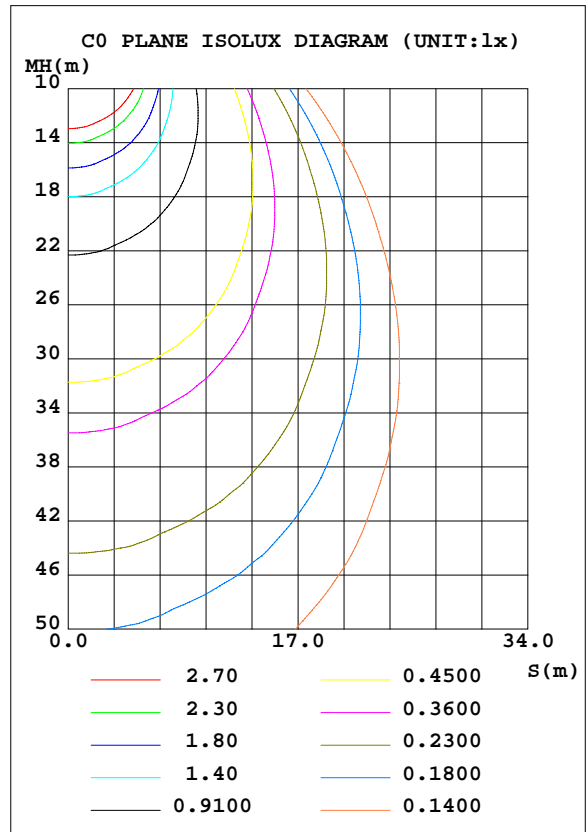
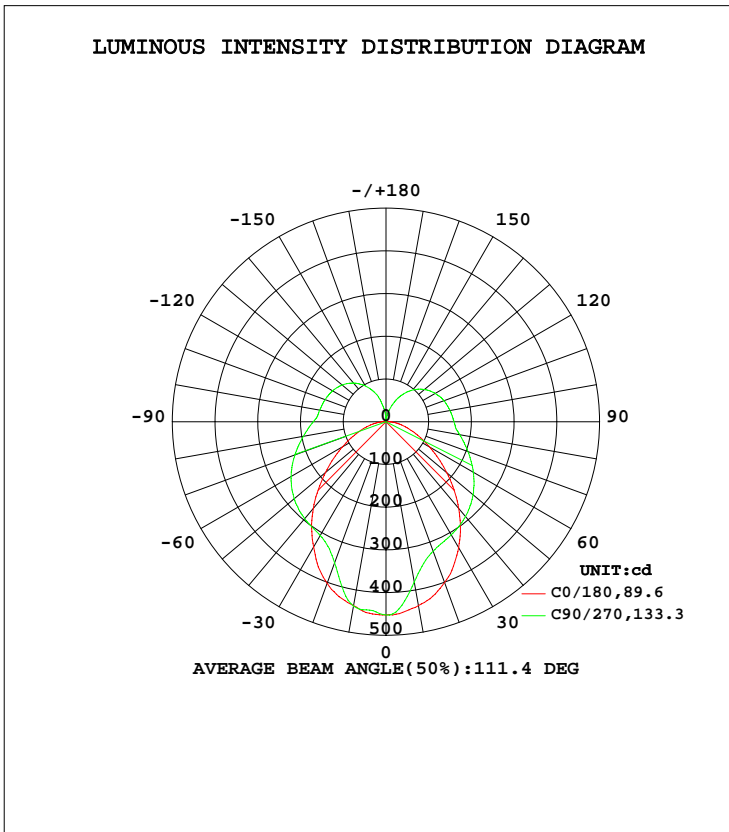


**LUMINAIRE PHOTOMETRIC TEST REPORT**

Test:U:120.1V I:0.2456A P:29.05W PF:0.9851 Lamp Flux:1901.54x1 lm		
NAME: Island Edge-Lit Ribbon	TYPE:N/A	WEIGHT:N/A
SPEC.:N/A	DIM.: N/A	SERIAL No.:N/A
MFR.:	SUR.:N/A	Shielding Angle:N/A

DATA OF LAMP		PHOTOMETRIC DATA Eff: 65.46 lm/W			
MODEL	4600	Imax(cd)	452.6	S/MH(C0/180)	1.14
NOMINAL POWER(W)		LOR(%)	100.0	S/MH(C90/270)	0.98
RATED VOLTAGE(V)	120	TOTAL FLUX(lm)	1901.5	η UP, DN(C0-180)	15.2, 36.7
NOMINAL FLUX(lm)	1901.54	CIE CLASS	SEMI-D.	η UP, DN(C180-360)	13.2, 34.9
LAMPS INSIDE	1	η up(%)	28.4	CIBSE SHR NOM	1.25
TEST VOLTAGE(V)	120	η down(%)	71.6	CIBSE SHR MAX	1.30



C Range: 0 - 360DEG  
 C Interval: 22.5DEG  
 Test Speed: 10.0deg/s  
 Temperature:24.9DEG  
 Operators:  
 Test Date:2020-05-07

γ Range: 0 - 180DEG  
 γ Interval: 1.0DEG  
 Test System: GO-R5000\_V2 SYSTEM V2.0.351  
 Humidity:51%  
 Test Distance:2.502m [K=1.0000]  
 Remarks:

ZONAL FLUX DIAGRAM

ZONAL FLUX DIAGRAM:

γ	C0	C45	C90	C135	C180	C225	C270	C315	γ	Φ zone	Φ total	%lum,lamp
10	437.3	437.2	438.2	437.2	437.0	405.6	381.2	403.9	0- 10	41.60	41.60	2.19,2.19
20	402.6	384.8	351.9	385.0	400.6	333.2	322.7	331.6	10- 20	110.7	152.3	8.01,8.01
30	338.8	307.3	308.0	310.7	340.2	292.0	305.5	291.3	20- 30	155.2	307.5	16.2,16.2
40	265.0	264.3	296.1	269.3	265.1	264.9	289.9	264.6	30- 40	182.7	490.2	25.8,25.8
50	184.9	238.2	280.8	244.0	186.3	238.5	266.1	238.7	40- 50	195.8	685.9	36.1,36.1
60	118.0	213.9	256.3	219.9	117.5	210.9	236.0	210.5	50- 60	194.6	880.6	46.3,46.3
70	67.04	188.3	226.9	193.7	66.66	181.7	204.2	181.2	60- 70	181.8	1062	55.9,55.9
80	31.18	162.8	196.5	167.4	31.91	154.1	175.5	153.7	70- 80	161.0	1223	64.3,64.3
90	7.349	140.1	170.4	144.1	7.276	134.6	159.4	135.6	80- 90	137.8	1361	71.6,71.6
100	1.987	132.0	157.7	134.3	1.782	126.0	152.2	127.3	90-100	122.9	1484	78,78
110	0.2897	126.1	151.7	128.1	0.5643	115.9	144.3	117.3	100-110	112.2	1596	83.9,83.9
120	0.5735	117.2	144.6	119.5	0.6908	102.8	132.9	104.3	110-120	98.12	1694	89.1,89.1
130	1.044	105.2	134.0	107.8	0.7514	86.65	117.8	88.10	120-130	80.25	1775	93.3,93.3
140	1.569	90.26	118.4	92.81	0.7174	66.71	97.16	69.98	130-140	59.84	1834	96.5,96.5
150	2.096	72.50	96.89	74.69	0.6888	41.75	70.96	52.96	140-150	38.97	1873	98.5,98.5
160	2.305	48.52	70.33	51.63	0.7241	15.63	41.09	35.21	150-160	20.43	1894	99.6,99.6
170	2.133	23.13	34.20	15.98	0.7332	1.365	12.72	12.94	160-170	6.905	1901	100,100
180	2.094	1.938	0	3.431	2.093	2.123	2.173	2.252	170-180	0.7942	1902	100,100
DEG	LUMINOUS INTENSITY:cd Less than 25% Percent = 23.8 %								UNIT:lm			

Conical surface Flux(90deg): 587.36 lm

%lum = 30.9%  
 %lamp = 30.9%

Conical surface Flux(120deg): 880.57 lm

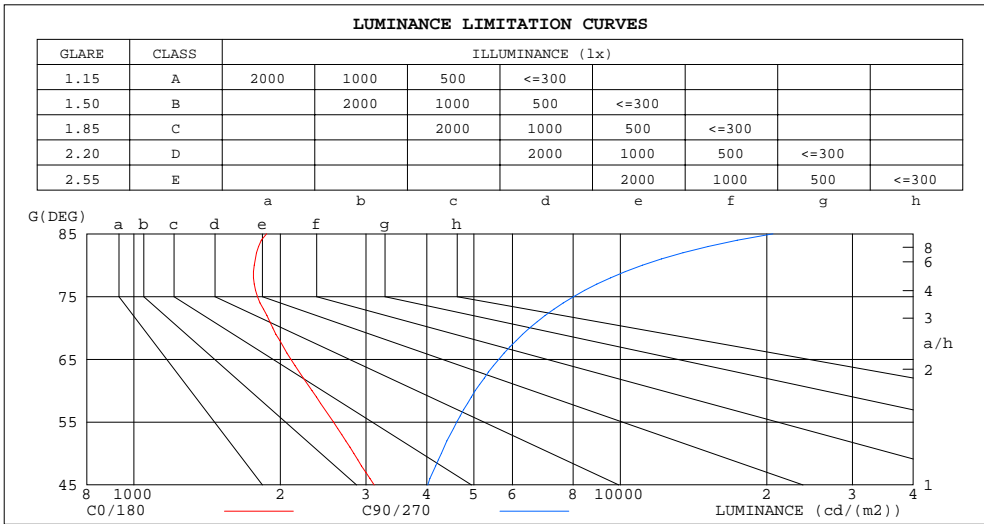
%lum = 46.3%  
 %lamp = 46.3%

C Range: 0 - 360DEG  
 C Interval: 22.5DEG  
 Test Speed: 10.0deg/s  
 Temperature:24.9DEG  
 Operators:  
 Test Date:2020-05-07

γ Range: 0 - 180DEG  
 γ Interval: 1.0DEG  
 Test System: GO-R5000\_V2 SYSTEM V2.0.351  
 Humidity:51%  
 Test Distance:2.502m [K=1.0000]  
 Remarks:

**LUMINANCE LIMITATION CURVES**

Test:U:120.1V I:0.2456A P:29.05W PF:0.9851 Lamp Flux:1901.54x1 lm		
NAME: Island Edge-Lit Ribbon	TYPE:N/A	WEIGHT:N/A
SPEC.:N/A	DIM.: N/A	SERIAL No.:N/A
MFR.:	SUR.:N/A	Shielding Angle:N/A



LUMINANCE cd/(m2)		
G(DEG)	C0/180	C90/270
85	1874	20590
80	1768	11103
75	1794	8024
70	1930	6510
65	2103	5627
60	2323	5029
55	2572	4609
50	2832	4286
45	3118	4020

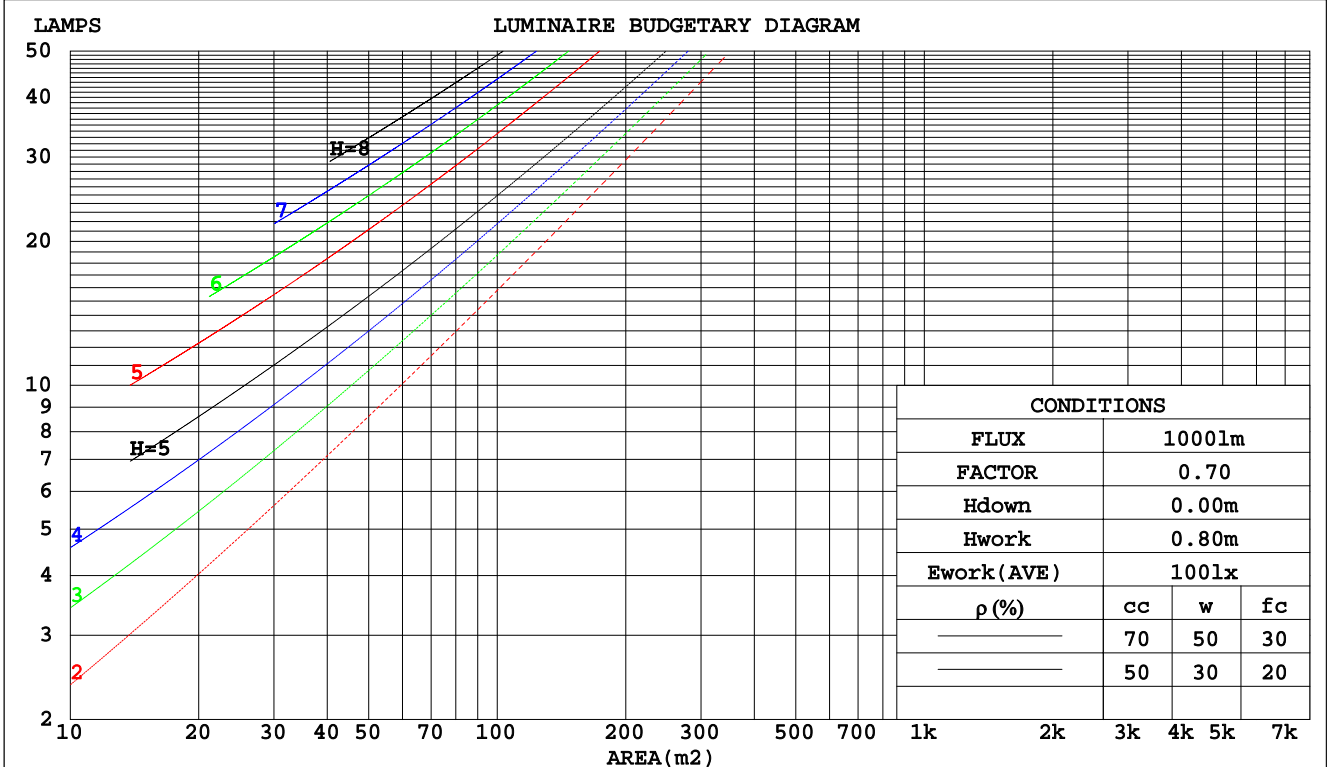
C Range: 0 - 360DEG  
 C Interval: 22.5DEG  
 Test Speed: 10.0deg/s  
 Temperature:24.9DEG  
 Operators:  
 Test Date:2020-05-07

γ Range: 0 - 180DEG  
 γ Interval: 1.0DEG  
 Test System: GO-R5000\_V2 SYSTEM V2.0.351  
 Humidity:51%  
 Test Distance:2.502m [K=1.0000]  
 Remarks:

**CU AND LUMINAIRE BUDGETARY ESTIMATE DIAGRAM**

Test:U:120.1V I:0.2456A P:29.05W PF:0.9851 Lamp Flux:1901.54x1 lm		
NAME: Island Edge-Lit Ribbon	TYPE:N/A	WEIGHT:N/A
SPEC.:N/A	DIM.: N/A	SERIAL No.:N/A
MFR.:	SUR.:N/A	Shielding Angle:N/A

pcc	80%			70%			50%			30%			10%			0
	50%	30%	10%	50%	30%	10%	50%	30%	10%	50%	30%	10%	50%	30%	10%	0
pw																0
pfc	20%			20%			20%			20%			20%			0
RCR	RCR:Room Cavity Ratio															
	Coefficients of Utilization(CU)															
0.0	1.12	1.12	1.12	1.06	1.06	1.06	.95	.95	.95	.85	.85	.85	.76	.76	.76	.72
1.0	.94	.88	.84	.89	.84	.80	.79	.75	.72	.70	.67	.65	.62	.60	.58	.54
2.0	.80	.73	.66	.76	.69	.63	.68	.62	.58	.60	.56	.52	.53	.50	.47	.43
3.0	.70	.61	.54	.66	.58	.52	.59	.53	.47	.53	.47	.43	.46	.42	.39	.35
4.0	.62	.52	.45	.58	.50	.44	.52	.45	.40	.46	.41	.36	.41	.37	.33	.30
5.0	.55	.46	.39	.52	.43	.37	.47	.40	.34	.42	.36	.31	.37	.32	.28	.26
6.0	.49	.40	.34	.47	.38	.32	.42	.35	.30	.38	.32	.27	.33	.29	.25	.22
7.0	.44	.36	.29	.42	.34	.28	.38	.31	.26	.34	.28	.24	.31	.26	.22	.20
8.0	.40	.32	.26	.38	.31	.25	.35	.28	.23	.31	.26	.21	.28	.23	.20	.17
9.0	.37	.29	.23	.35	.28	.22	.32	.25	.21	.29	.23	.19	.26	.21	.18	.16
10.0	.34	.26	.21	.32	.25	.20	.30	.23	.19	.27	.21	.18	.24	.20	.16	.14



C Range: 0 - 360DEG  
 C Interval: 22.5DEG  
 Test Speed: 10.0deg/s  
 Temperature:24.9DEG  
 Operators:  
 Test Date:2020-05-07

γ Range: 0 - 180DEG  
 γ Interval: 1.0DEG  
 Test System: GO-R5000\_V2 SYSTEM V2.0.351  
 Humidity:51%  
 Test Distance:2.502m [K=1.0000]  
 Remarks:

WEC AND CCEC

Test:U:120.1V I:0.2456A P:29.05W PF:0.9851 Lamp Flux:1901.54x1 lm														
NAME: Island Edge-Lit Ribbon					TYPE:N/A					WEIGHT:N/A				
SPEC.:N/A					DIM.: N/A					SERIAL No.:N/A				
MFR.:					SUR.:N/A					Shielding Angle:N/A				

ρcc	80%			70%			50%			30%			10%			0
ρw	50%	30%	10%	50%	30%	10%	50%	30%	10%	50%	30%	10%	50%	30%	10%	0
ρfc	20%			20%			20%			20%			20%			0
RCR	RCR:Room Cavity Ratio						Wall Exitance Coefficients(WEC)									
0.0																
1.0	.375	.213	.067	.359	.205	.065	.329	.189	.060	.302	.174	.056	.277	.160	.052	
2.0	.323	.177	.054	.308	.170	.052	.281	.157	.049	.257	.144	.045	.234	.132	.042	
3.0	.286	.152	.046	.273	.146	.044	.249	.135	.041	.226	.124	.038	.205	.114	.035	
4.0	.258	.134	.039	.246	.129	.038	.224	.119	.035	.203	.109	.033	.184	.100	.030	
5.0	.234	.119	.035	.224	.115	.033	.203	.106	.031	.184	.097	.029	.167	.089	.027	
6.0	.215	.108	.031	.205	.104	.030	.186	.096	.028	.169	.088	.026	.153	.080	.024	
7.0	.198	.098	.028	.189	.094	.027	.172	.087	.025	.156	.080	.023	.141	.073	.022	
8.0	.184	.090	.025	.176	.087	.024	.160	.080	.023	.145	.073	.021	.131	.067	.020	
9.0	.172	.083	.023	.164	.080	.022	.149	.074	.021	.135	.068	.019	.122	.062	.018	
10.0	.161	.077	.021	.154	.074	.021	.140	.069	.019	.127	.063	.018	.115	.058	.017	

ρcc	80%			70%			50%			30%			10%			0
ρw	50%	30%	10%	50%	30%	10%	50%	30%	10%	50%	30%	10%	50%	30%	10%	0
ρfc	20%			20%			20%			20%			20%			0
RCR	RCR:Room Cavity Ratio						Ceiling Cavity Exitance Coefficients(CCEC)									
0.0	.407	.407	.407	.348	.348	.348	.237	.237	.237	.136	.136	.136	.044	.044	.044	
1.0	.403	.374	.348	.345	.321	.299	.236	.221	.207	.136	.128	.120	.043	.041	.039	
2.0	.396	.352	.314	.339	.303	.271	.233	.209	.189	.134	.122	.111	.043	.039	.036	
3.0	.389	.335	.293	.333	.289	.254	.229	.201	.178	.132	.117	.105	.042	.038	.034	
4.0	.381	.323	.279	.327	.279	.242	.225	.195	.171	.130	.114	.101	.042	.037	.033	
5.0	.373	.313	.269	.321	.271	.234	.221	.189	.165	.128	.111	.098	.041	.036	.032	
6.0	.366	.306	.262	.315	.265	.228	.217	.185	.162	.126	.109	.096	.041	.036	.032	
7.0	.359	.299	.257	.309	.259	.224	.213	.182	.159	.124	.107	.095	.040	.035	.031	
8.0	.353	.294	.253	.304	.255	.221	.210	.179	.157	.122	.106	.093	.040	.035	.031	
9.0	.347	.289	.250	.299	.251	.218	.207	.176	.155	.120	.104	.092	.039	.034	.031	
10.0	.341	.285	.248	.294	.247	.216	.204	.174	.154	.119	.103	.092	.039	.034	.030	

C Range: 0 - 360DEG  
 C Interval: 22.5DEG  
 Test Speed: 10.0deg/s  
 Temperature:24.9DEG  
 Operators:  
 Test Date:2020-05-07

γ Range: 0 - 180DEG  
 γ Interval: 1.0DEG  
 Test System: GO-R5000\_V2 SYSTEM V2.0.351  
 Humidity:51%  
 Test Distance:2.502m [K=1.0000]  
 Remarks:

UGR(Unified Glare Rating) Table

Test:U:120.1V I:0.2456A P:29.05W PF:0.9851 Lamp Flux:1901.54x1 lm										
NAME: Island Edge-Lit Ribbon					TYPE:N/A			WEIGHT:N/A		
SPEC.:N/A					DIM.: N/A			SERIAL No.:N/A		
MFR.:					SUR.:N/A			Shielding Angle:N/A		
ceiling/cavity	0.7	0.7	0.5	0.5	0.3	0.7	0.7	0.5	0.5	0.3
walls	0.5	0.3	0.5	0.3	0.3	0.5	0.3	0.5	0.3	0.3
working plane	0.2	0.2	0.2	0.2	0.2	0.2	0.2	0.2	0.2	0.2
Room dimensions	Viewed crosswise					Viewed endwise				
x = 2H y = 2H	14.1	15.3	14.7	15.9	16.7	16.8	18.0	17.4	18.7	19.4
3H	15.5	16.6	16.1	17.3	18.1	19.5	20.7	20.2	21.3	22.1
4H	16.1	17.2	16.8	17.9	18.7	21.0	22.1	21.7	22.8	23.6
6H	16.6	17.6	17.3	18.3	19.2	22.7	23.7	23.4	24.4	25.2
8H	16.8	17.8	17.5	18.5	19.3	23.6	24.6	24.3	25.3	26.2
12H	17.0	17.9	17.7	18.6	19.5	24.7	25.6	25.4	26.3	27.2
4H 2H	15.5	16.6	16.2	17.2	18.1	17.4	18.4	18.0	19.1	19.9
3H	17.3	18.2	18.0	19.0	19.8	20.4	21.3	21.1	22.0	22.9
4H	18.2	19.0	18.9	19.8	20.7	22.1	22.9	22.8	23.7	24.6
6H	19.0	19.7	19.7	20.5	21.4	24.0	24.7	24.7	25.5	26.4
8H	19.3	20.0	20.1	20.8	21.7	25.0	25.7	25.8	26.5	27.4
12H	19.6	20.2	20.4	21.0	22.0	26.2	26.8	27.0	27.6	28.6
8H 4H	19.6	20.3	20.3	21.1	22.0	22.5	23.2	23.3	24.0	24.9
6H	20.9	21.5	21.7	22.3	23.2	24.7	25.3	25.5	26.1	27.1
8H	21.5	22.0	22.3	22.8	23.8	25.9	26.5	26.8	27.3	28.3
12H	22.0	22.5	22.8	23.3	24.3	27.4	27.9	28.2	28.7	29.7
12H 4H	20.0	20.6	20.8	21.4	22.4	22.5	23.2	23.3	24.0	24.9
6H	21.5	22.1	22.4	22.9	23.9	24.8	25.4	25.7	26.2	27.2
8H	22.4	22.8	23.2	23.7	24.7	26.2	26.7	27.1	27.5	28.6
Variations with the observer position at spacings:										
S = 1.0H	+ 0.1 / - 0.1					+ 0.1 / - 0.1				
1.5H	+ 0.2 / - 0.2					+ 0.2 / - 0.3				
2.0H	+ 0.3 / - 0.4					+ 0.3 / - 0.4				

CIE Pub.117 Corrected 1902 lm Total Lamp Luminous Flux.(8log(F/F0) = 2.2)

C Range: 0 - 360DEG  
 C Interval: 22.5DEG  
 Test Speed: 10.0deg/s  
 Temperature:24.9DEG  
 Operators:  
 Test Date:2020-05-07

γ Range: 0 - 180DEG  
 γInterval: 1.0DEG  
 Test System: GO-R5000\_V2 SYSTEM V2.0.351  
 Humidity:51%  
 Test Distance:2.502m [K=1.0000]  
 Remarks:

**UTILIZATION FACTORS TABLE**

Test:U:120.1V I:0.2456A P:29.05W PF:0.9851 Lamp Flux:1901.54x1 lm		
NAME: Island Edge-Lit Ribbon	TYPE:N/A	WEIGHT:N/A
SPEC.:N/A	DIM.: N/A	SERIAL No.:N/A
MFR.:	SUR.:N/A	Shielding Angle:N/A

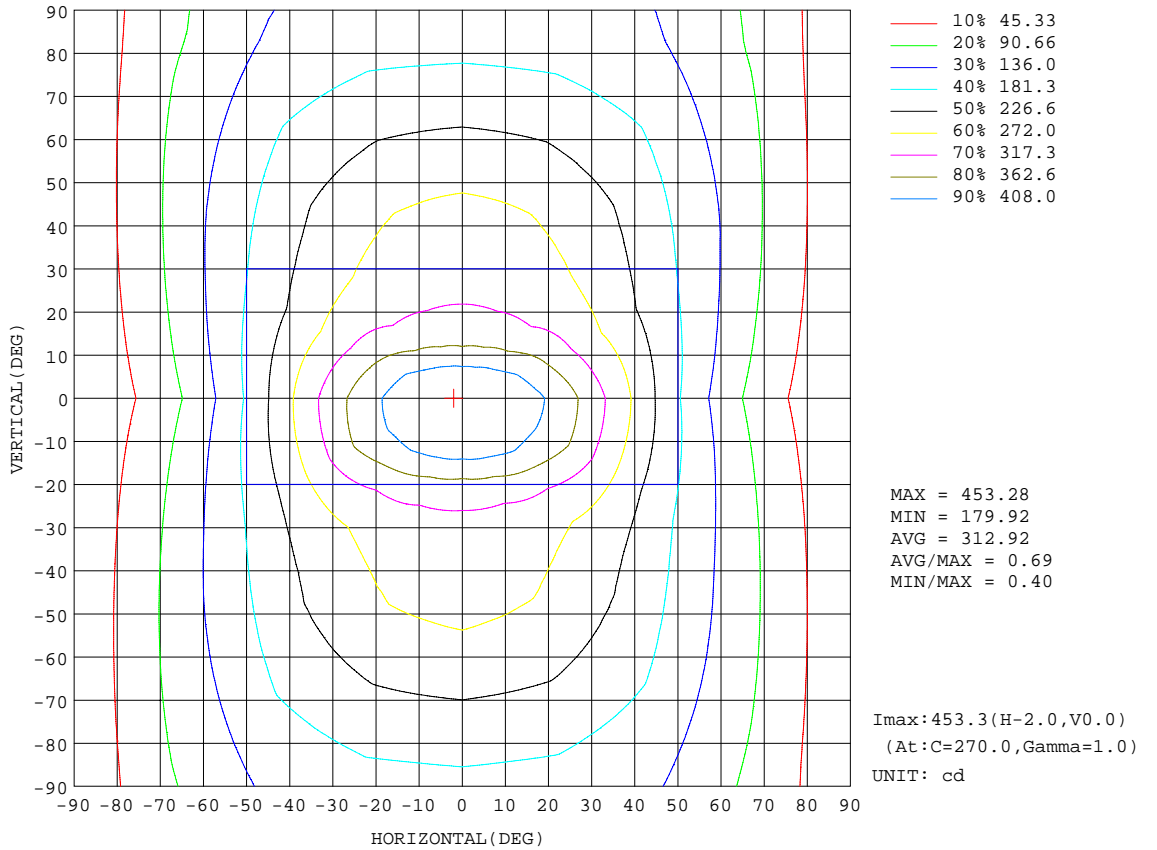
REFLECTANCE										
Ceiling	0.8	0.8	0.8	0.7	0.7	0.7	0.5	0.5	0.5	0
Walls	0.7	0.5	0.3	0.7	0.5	0.3	0.7	0.5	0.3	0
Working plane	0.2	0.2	0.2	0.2	0.2	0.2	0.2	0.2	0.2	0
ROOM INDEX	UTILIZATION FACTORS(PERCENT) $k(RI) \times RCR = 5$									
k = 0.60	46	34	27	44	33	26	42	32	26	19
0.80	55	42	34	53	41	33	49	39	32	24
1.00	62	49	41	60	48	40	55	47	38	29
1.25	69	56	48	66	55	47	61	51	44	34
1.50	74	62	53	71	60	52	65	56	49	37
2.00	81	70	62	77	67	60	70	62	56	42
2.50	86	75	67	82	72	65	74	66	60	46
3.00	89	80	72	85	77	70	77	70	65	49
4.00	94	86	79	89	82	76	81	75	70	53
5.00	97	90	84	92	86	81	83	78	74	55
ROOM INDEX	UF(total)									Direct
According to DIN EN 13032-2 2004			Suspended				SHRNOM = 1.25			

C Range: 0 - 360DEG  
 C Interval: 22.5DEG  
 Test Speed: 10.0deg/s  
 Temperature:24.9DEG  
 Operators:  
 Test Date:2020-05-07

$\gamma$  Range: 0 - 180DEG  
 $\gamma$  Interval: 1.0DEG  
 Test System: GO-R5000\_V2 SYSTEM V2.0.351  
 Humidity:51%  
 Test Distance:2.502m [K=1.0000]  
 Remarks:

**ISOCANDELA DIAGRAM**

Test:U:120.1V I:0.2456A P:29.05W PF:0.9851 Lamp Flux:1901.54x1 lm		
NAME: Island Edge-Lit Ribbon	TYPE:N/A	WEIGHT:N/A
SPEC.:N/A	DIM.: N/A	SERIAL No.:N/A
MFR.:	SUR.:N/A	Shielding Angle:N/A



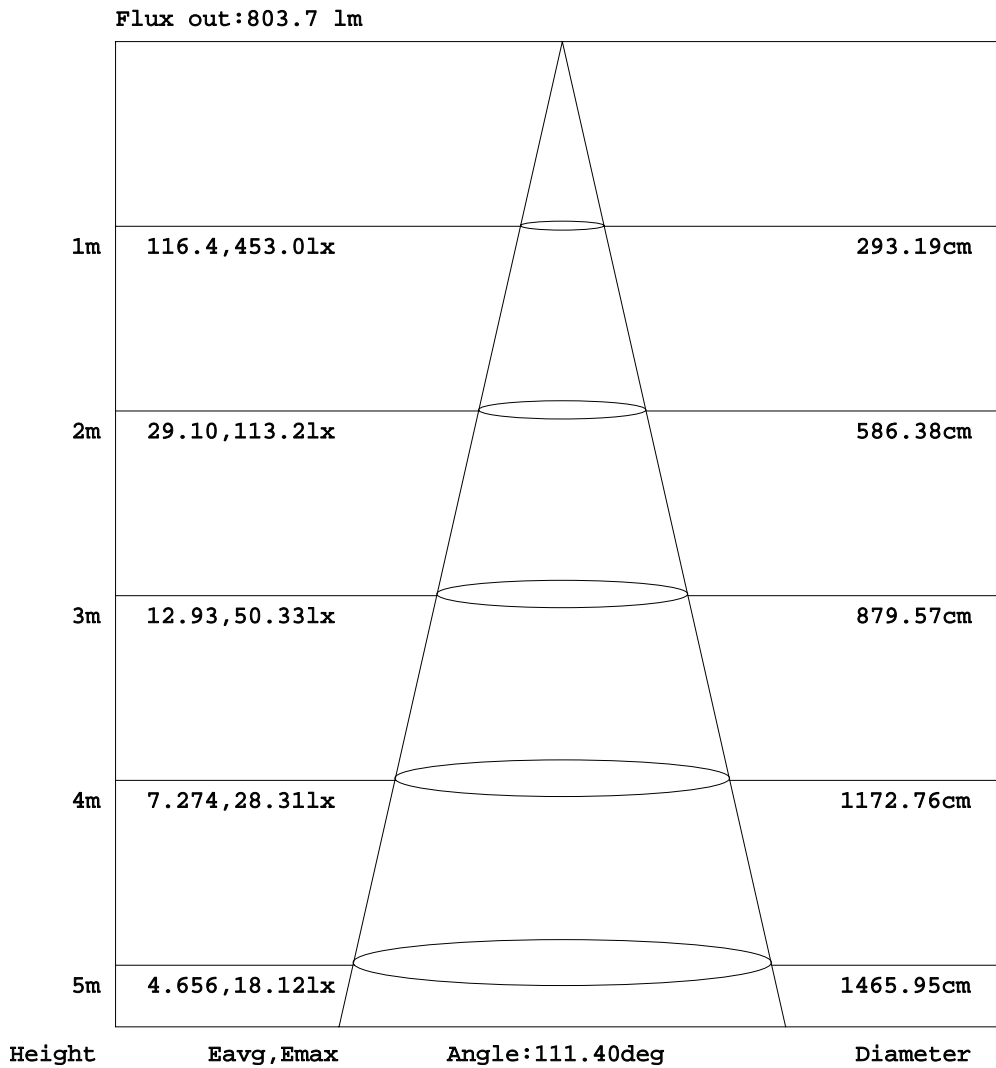
C Range: 0 - 360DEG  
 C Interval: 22.5DEG  
 Test Speed: 10.0deg/s  
 Temperature:24.9DEG  
 Operators:  
 Test Date:2020-05-07

γ Range: 0 - 180DEG  
 γ Interval: 1.0DEG  
 Test System: GO-R5000\_V2 SYSTEM V2.0.351  
 Humidity:51%  
 Test Distance:2.502m [K=1.0000]  
 Remarks:



**AAI Figure**

Test:U:120.1V I:0.2456A P:29.05W PF:0.9851 Lamp Flux:1901.54x1 lm		
NAME: Island Edge-Lit Ribbon	TYPE:N/A	WEIGHT:N/A
SPEC.:N/A	DIM.: N/A	SERIAL No.:N/A
MFR.:	SUR.:N/A	Shielding Angle:N/A



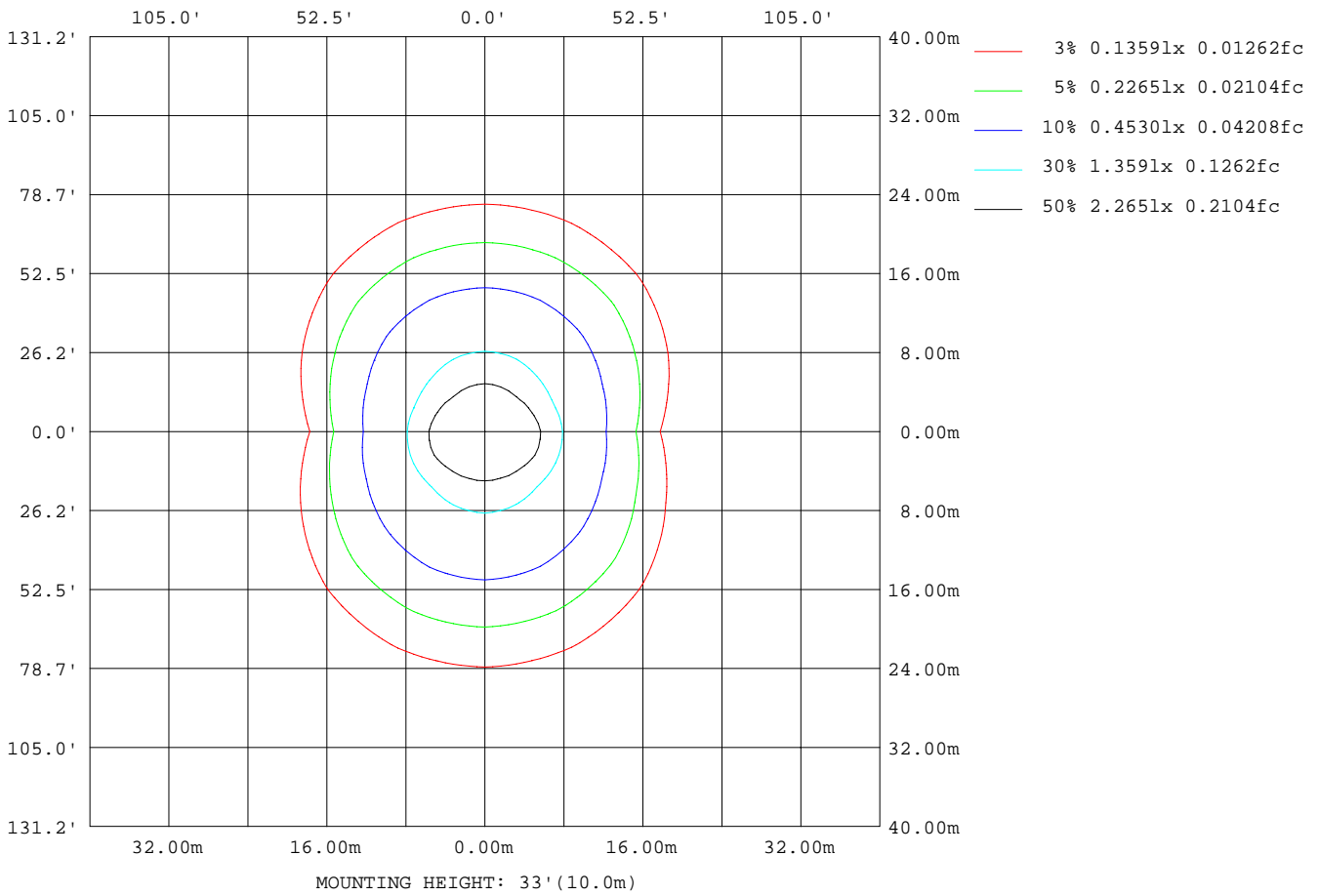
Note:The Curves indicate the illuminated area and the average illumination when the luminaire is at different distance.

C Range: 0 - 360DEG  
 C Interval: 22.5DEG  
 Test Speed: 10.0deg/s  
 Temperature:24.9DEG  
 Operators:  
 Test Date:2020-05-07

γ Range: 0 - 180DEG  
 γInterval: 1.0DEG  
 Test System: GO-R5000\_V2 SYSTEM V2.0.351  
 Humidity:51%  
 Test Distance:2.502m [K=1.0000]  
 Remarks:

**ISOLUX DIAGRAM**

Test:U:120.1V I:0.2456A P:29.05W PF:0.9851 Lamp Flux:1901.54x1 lm		
NAME: Island Edge-Lit Ribbon	TYPE:N/A	WEIGHT:N/A
SPEC.:N/A	DIM.: N/A	SERIAL No.:N/A
MFR.:	SUR.:N/A	Shielding Angle:N/A



C Range: 0 - 360DEG  
 C Interval: 22.5DEG  
 Test Speed: 10.0deg/s  
 Temperature:24.9DEG  
 Operators:  
 Test Date:2020-05-07

γ Range: 0 - 180DEG  
 γ Interval: 1.0DEG  
 Test System: GO-R5000\_V2 SYSTEM V2.0.351  
 Humidity:51%  
 Test Distance:2.502m [K=1.0000]  
 Remarks:

LED Avg.L Report

Test:U:120.1V I:0.2456A P:29.05W PF:0.9851 Lamp Flux:1901.54x1 lm		
NAME: Island Edge-Lit Ribbon	TYPE:N/A	WEIGHT:N/A
SPEC.:N/A	DIM.: N/A	SERIAL No.:N/A
MFR.:	SUR.:N/A	Shielding Angle:N/A

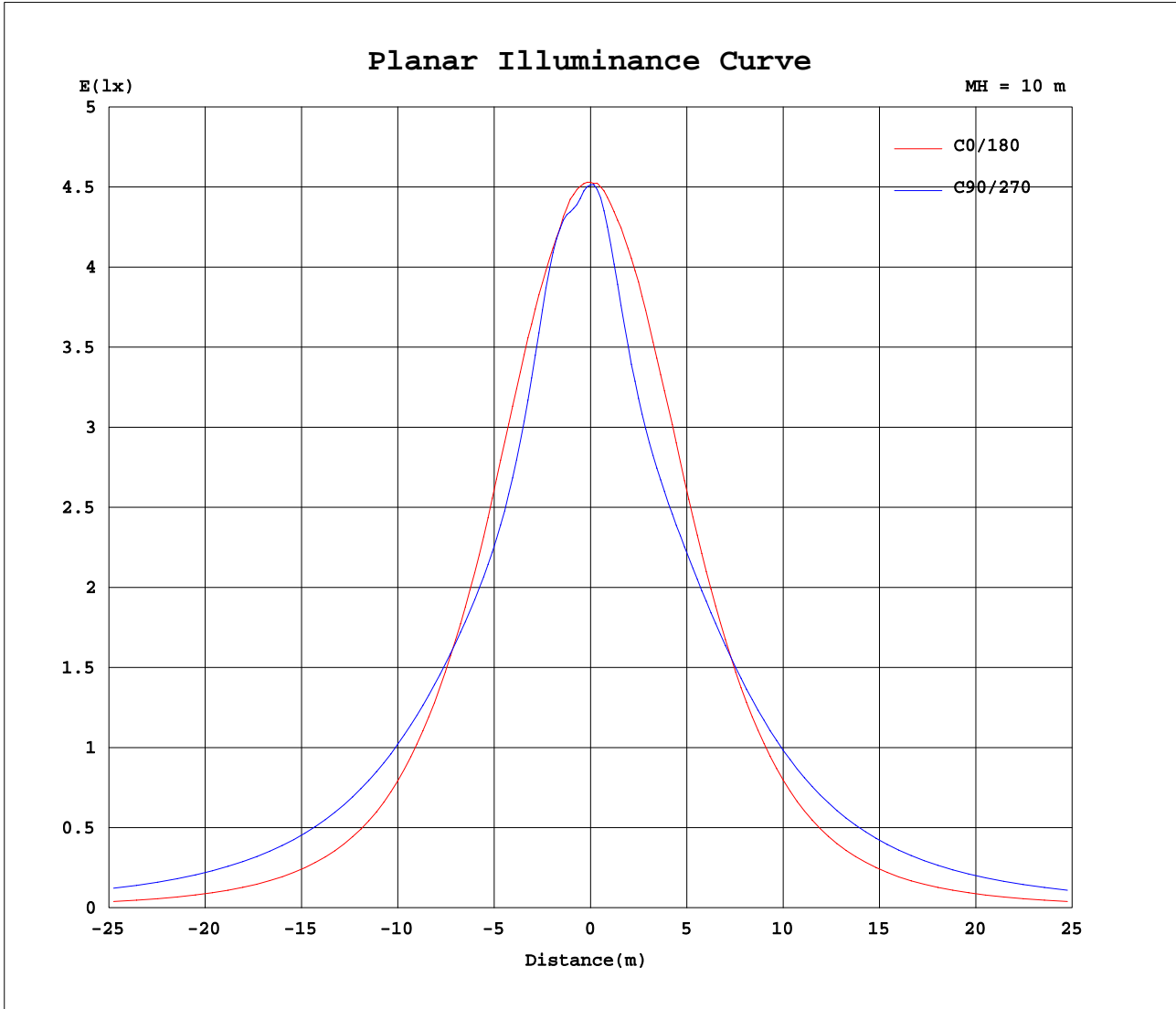
AvgL	cd/m2
L_0~180(65)av	2096
L_0~180(75)av	1797
L_0~180(85)av	1976
L_90~270(65)av	5377
L_90~270(75)av	7617
L_90~270(85)av	19554
L_45(65)av	4655
L_45(75)av	6555
L_45(85)av	16609

Standard: GB/T 29293-2012

C Range: 0 - 360DEG  
 C Interval: 22.5DEG  
 Test Speed: 10.0deg/s  
 Temperature:24.9DEG  
 Operators:  
 Test Date:2020-05-07

γ Range: 0 - 180DEG  
 γ Interval: 1.0DEG  
 Test System: GO-R5000\_V2 SYSTEM V2.0.351  
 Humidity:51%  
 Test Distance:2.502m [K=1.0000]  
 Remarks:

Planar Illuminance Curve



C Range: 0 - 360DEG  
 C Interval: 22.5DEG  
 Test Speed: 10.0deg/s  
 Temperature: 24.9DEG  
 Operators:  
 Test Date: 2020-05-07

γ Range: 0 - 180DEG  
 γ Interval: 1.0DEG  
 Test System: GO-R5000\_V2 SYSTEM V2.0.351  
 Humidity: 51%  
 Test Distance: 2.502m [K=1.0000]  
 Remarks:

LUMINOUS DISTRIBUTION INTENSITY DATA

Test:U:120.1V I:0.2456A P:29.05W PF:0.9851 Lamp Flux:1901.54x1 lm		
NAME: Island Edge-Lit Ribbon	TYPE:N/A	WEIGHT:N/A
SPEC.:N/A	DIM.: N/A	SERIAL No.:N/A
MFR.:	SUR.:N/A	Shielding Angle:N/A

Table--1

UNIT: cd

C(DEG) γ (DEG)	0	22.5	45	67.5	90	112.5	135	157.5	180	202.5	225	247.5	270	292.5	315	337.5			
0	452	452	452	452	452	452	452	452	452	452	452	452	452	452	452	452			
5	450	447	444	443	443	442	443	447	448	447	442	435	431	433	440	448			
10	437	433	437	440	438	439	437	433	437	429	406	387	381	386	404	427			
15	424	418	420	406	399	406	420	422	423	403	366	348	343	346	364	402			
20	403	401	385	359	352	359	385	403	401	371	333	324	323	322	332	370			
25	375	375	342	323	322	324	345	379	373	338	309	310	313	309	308	335			
30	339	339	307	304	308	305	311	345	340	306	292	301	306	300	291	303			
35	304	302	282	293	301	295	286	307	304	277	278	292	299	292	278	274			
40	265	265	264	286	296	288	269	270	265	250	265	283	290	283	265	248			
45	224	231	251	278	290	280	256	238	225	226	252	273	279	272	252	225			
50	185	203	238	269	281	272	244	211	186	204	239	260	266	260	239	204			
55	150	180	227	259	269	261	232	187	150	184	225	246	252	245	225	184			
60	118	160	214	246	256	249	220	167	118	166	211	232	236	230	210	166			
65	90.3	142	201	233	242	235	207	150	89.9	148	196	217	220	215	196	149			
70	67.0	127	188	219	227	220	194	135	66.7	131	182	201	204	199	181	132			
75	47.2	114	175	204	212	205	180	121	47.4	116	168	186	189	185	167	117			
80	31.2	101	163	190	197	191	167	108	31.9	102	154	173	175	171	154	103			
85	16.6	89.7	151	177	183	178	155	96.9	18.4	88.4	142	161	164	160	141	89.9			
90	7.35	80.2	140	165	170	166	144	86.7	7.28	80.2	135	156	159	155	136	83.8			
95	6.93	79.2	135	157	161	157	137	83.5	7.32	76.8	130	152	156	151	131	80.2			
100	1.99	78.5	132	153	158	153	134	82.6	1.78	73.3	126	148	152	148	127	76.5			
105	0.28	77.3	129	150	155	151	131	81.2	0.54	69.3	121	144	149	144	123	72.4			
110	0.29	75.6	126	147	152	147	128	79.4	0.56	65.0	116	139	144	139	117	68.0			
115	0.36	73.3	122	143	148	144	124	77.2	0.65	60.3	110	133	139	133	111	63.1			
120	0.57	70.6	117	139	145	140	119	74.4	0.69	55.3	103	127	133	127	104	57.8			
125	0.82	67.2	112	134	140	135	114	71.0	0.79	49.9	95.1	119	126	119	96.5	52.2			
130	1.04	63.4	105	127	134	128	108	67.1	0.75	44.1	86.7	110	118	111	88.1	46.5			
135	1.34	58.8	98.3	120	127	121	101	62.6	0.74	38.0	77.2	101	108	101	79.3	40.7			
140	1.57	54.2	90.3	111	118	112	92.8	57.6	0.72	31.1	66.7	89.3	97.2	90.6	70.0	35.5			
145	1.84	46.6	81.7	102	108	103	84.1	51.6	0.69	22.8	54.7	76.3	84.7	79.5	61.4	31.6			
150	2.10	37.0	72.5	90.4	96.9	91.4	74.7	43.2	0.69	13.8	41.8	61.7	71.0	67.7	53.0	28.4			
155	2.28	30.0	62.7	78.4	84.2	79.3	64.6	35.4	0.72	4.96	27.9	46.6	56.2	55.3	44.5	25.3			
160	2.30	24.5	48.5	65.5	70.3	66.4	51.6	23.9	0.72	0.81	15.6	31.9	41.1	42.2	35.2	21.2			
165	2.20	17.8	34.3	47.3	53.4	49.0	31.5	14.5	0.73	0.67	5.84	16.8	26.8	28.6	24.4	15.1			
170	2.13	10.3	23.1	31.3	34.2	31.0	16.0	9.92	0.73	0.71	1.37	6.17	12.7	15.3	12.9	6.67			
175	2.13	6.07	10.2	14.4	17.9	8.96	11.2	6.97	1.80	1.76	0.66	0.98	1.68	2.51	1.42	0.84			
180	2.09	2.09	1.94	1.09	0.00	5.91	3.43	2.19	2.09	2.10	2.12	2.17	2.17	0.78	2.25	2.43			

C Range: 0 - 360DEG  
 C Interval: 22.5DEG  
 Test Speed: 10.0deg/s  
 Temperature:24.9DEG  
 Operators:  
 Test Date:2020-05-07

γ Range: 0 - 180DEG  
 γInterval: 1.0DEG  
 Test System: GO-R5000\_V2 SYSTEM V2.0.351  
 Humidity:51%  
 Test Distance:2.502m [K=1.0000]  
 Remarks: