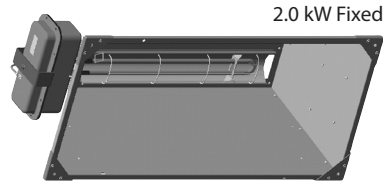
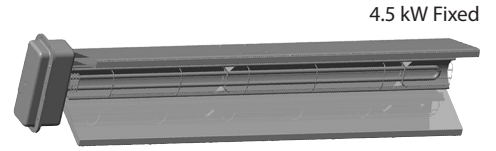


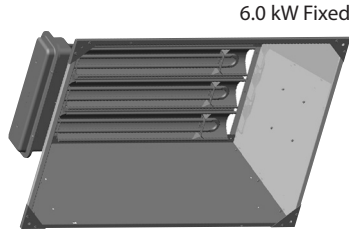
XRM SERIES INDUSTRIAL INFRARED HEATER



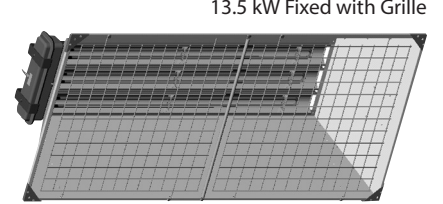
2.0 kW Fixed



4.5 kW Fixed



6.0 kW Fixed



13.5 kW Fixed with Grille

IDEAL SPACES

- Wastewater Treatment Plants
- Loading Docks
- Foundries
- Auto or Marine Repair Facilities
- Walkways
- Assembly Areas
- Enclosed Smoking Areas
- Indoor/Outdoor Storage Areas

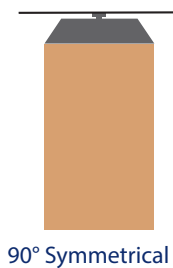
ENCLOSURE TYPE

- Stainless Steel

ELEMENT TYPE*

- Metal Sheath

REFLECTIVE ANGLE



- Ideal for permanent supplemental, spot heating where dependence on air movement is impractical
- High-watt density and industrial design provides a durable source of heat
- Units are rated to be permanently mounted in the horizontal position
- Heavy-duty U-Bend element
- Electric heaters convert energy to heat at 100% efficiency
- Optional safety grilles are available
- Heater has sealed wiring compartment that allows units for washdown

NOTE: *Metal Sheathed: used indoors or outdoors in high-traffic areas. Maintain at least 5 ft. in radiant path, between bottom of heater and combustible material. Pigtail element leads for a more positive connection in high-traffic areas where physical abuse.



www.berkomep.com

For Technical Services, Call 800-642-4328

ITEM# BFLY_XRM_1217-1

BERKO[®]
A Marley Engineered Products Brand

XRM SERIES INDUSTRIAL INFRARED HEATER

| MODELS & SPECIFICATIONS | | | | | | | | | | | |
|-------------------------|-----------------|--------|-------|---------|------------------|--------------|----------------|--------------|----------|--------------|----|
| CATALOG NO. | UPC | WATTS | VOLTS | PHASE | REFLECTIVE ANGLE | ELEMENT TYPE | SHIP WT. (LBS) | | | | |
| XRM2081 | 6 85360 10507 9 | 2,000 | 208 | 1 | 90° Symm | Metal Sheath | 18 | | | | |
| XRM2021 | 6 85360 10502 4 | | 240 | | | | | | | | |
| XRM2041 | 6 85360 10504 8 | | 480 | | | | | | | | |
| XRM2061 | 6 85360 10505 5 | | 600 | | | | | | | | |
| XRM4581 | 6 85360 08063 5 | 4,500 | 208 | 1 | | | 90° Symm | Metal Sheath | 18 | | |
| XRM4521 | 6 85360 08060 4 | | 240 | | | | | | | | |
| XRM4541 | 6 85360 08061 1 | | 480 | | | | | | | | |
| XRM4561 | 6 85360 10509 3 | | 600 | | | | | | | | |
| XRM6083 | 6 85360 08067 3 | 6,000 | 208 | 1 and 3 | | | | | 90° Symm | Metal Sheath | 25 |
| XRM6023 | 6 85360 08064 2 | | 240 | | | | | | | | |
| XRM6071 | 6 85360 10511 6 | | 277 | 1 | | | | | | | |
| XRM6043 | 6 85360 08065 9 | | 480 | 1 and 3 | | | | | | | |
| XRM6063 | 6 85360 08066 6 | 600 | | | | | | | | | |
| XRM13583 | 6 85360 15215 8 | 13,500 | 208 | 3 | 90° Symm | Metal Sheath | | | | | 55 |
| XRM13523 | 6 85360 15213 4 | | 240 | | | | | | | | |
| XRM13571 | 6 85360 10501 7 | | 277 | 1 | | | | | | | |
| XRM13543 | 6 85360 08057 4 | | 480 | 1 and 3 | | | | | | | |
| XRM13563 | 6 85360 08058 1 | | 600 | | | | | | | | |

NOTE: See page 124 for infrared accessories. Ground Fault Detection: Ground fault detection equipment is designed to monitor for any gradual changes in the insulation level due to humidity or mechanical damage as it develops, thus, de-energizing the load to prevent arcing type faults, preventing premature element failure and potential fire damage. As a safety precaution it is highly recommended that industrial infrared heaters must be protected by ground fault detection. Failure to comply could result in a building fire or serious equipment damage.

