

## QMKC SERIES

### COMMERCIAL BASEBOARD HEATER



#### IDEAL SPACES

- Bedrooms
- Living/Family Rooms
- Kitchens
- Bathrooms
- Basements
- Offices
- Conference Rooms
- Hallways
- Lobbies
- Waiting Rooms

#### COLORS

- Navajo White

#### DIMENSIONS



- Ideal for basic, zoned primary/secondary heating
- No fans; convection heat minimizes air flow, reducing flow of bacteria and dust
- Commercial-grade 18-gauge cold rolled front cover and brackets allow heater to withstand rigors of commercial applications
- Steel-sheathed heating element combines the durability of a steel tubular heater with the excellent heat transfer characteristics of aluminum fins
- Built-in wire-way facilitates end-to-end installation of continuous-run heaters
- Large, pre-wired junction boxes at each end are provided with knockouts in the rear, bottom, inside and outside
- High temperature safety limit for added protection in case of airflow blockage
- Pre-notched marks for mounting guide
- UL-listed for installation flush to any wall and flat on any floor type
- Chimney-fin element designed for maximum air circulation
- Air flow directed away from walls to help prevent wall streaking



[www.qmarkmep.com](http://www.qmarkmep.com)

For Technical Services, Call 800-642-4328

ITEM# QFLY\_QMKC\_0321-1



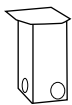
## QMKC SERIES COMMERCIAL BASEBOARD HEATER

### MODELS & SPECIFICATIONS

CATALOG NO.	UPC	VOLTS	WATTS	AMPS	LENGTH (IN)	SHIP WT. (LBS)
QMKC25126W	6 85360 06046 0	120	500	4.2	30"	7.8
QMKC25026W	6 85360 06016 3	208	500	2.4		
QMKC25426W	6 85360 06087 3	240/208	500/376	2.1/1.8		
QMKC25726W	6 85360 06132 0	277/240/208	500/376/282	1.8/1.6/1.4		
QMKC2513W	6 85360 06051 4	120	750	6.5	36"	9.0
QMKC2503W	6 85360 06021 7	208	750	3.6		
QMKC2543W	6 85360 06092 7	240/208	750/564	3.1/2.7		
QMKC2573W	6 85360 06137 5	277/240/208	750/564/423	2.7/2.4/2.0		
QMKC2514W	6 85360 06056 9	120	1000	8.3	48"	11.5
QMKC2504W	6 85360 06026 2	208	1000	4.8		
QMKC2544W	6 85360 06097 2	240/208	1000/752	4.2/3.6		
QMKC2574W	6 85360 06142 9	277/240/208	1000/752/564	3.6/3.1/2.7		
QMKC2515W	6 85360 06061 3	120	1250	10.4	60"	13.0
QMKC2505W	6 85360 06031 6	208	1250	6.0		
QMKC2545W	6 85360 06102 3	240/208	1250/940	5.2/4.5		
QMKC2575W	6 85360 06147 4	277/240/208	1250/940/705	4.5/3.9/3.4		
QMKC2516W	6 85360 06066 8	120	1500	12.6	72"	15.5
QMKC2506W	6 85360 06036 1	208	1500	7.2		
QMKC2546W	6 85360 06107 8	240/208	1500/1128	6.3/5.4		
QMKC2576W	6 85360 06152 8	277/240/208	1500/1128/846	5.4/4.7/4.1		
QMKC2508W	6 85360 06041 5	208	2000	9.6	96"	20
QMKC2548W	6 85360 06112 2	240/208	2000/1504	8.3/7.2		
QMKC2578W	6 85360 06157 3	277/240/208	2000/1504/1128	7.2/6.3/5.4		
QMKC25008W	6 85360 06011 8	208	2500	12.0		
QMKC25408W	6 85360 06082 8	240/208	2500/1880	10.4/8.7	96"	20
QMKC25708W	6 85360 06127 6	277/240/208	2500/1880/1410	9.0/7.5/6.8		

### CONTROLS & ACCESSORIES

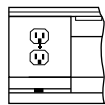
CATALOG NO.	UPC	DESCRIPTION	SHIP WT. (LBS)
TA1AW	0 98319 73041 1	SP Thermostat, rated 22A @ 120-277V	1
TA1TPAW	0 98319 73042 8	Tamper-Resistant Version of TA1AW	1
TA2AW	0 98319 73043 5	DP Thermostat, rated 22A @ 120-277V	1
TA2TPAW	0 98319 73044 2	Tamper-Resistant Version of TA2AW	1
HCA2415/20W	0 98319 73046 6	240V Load Transfer Switch, 20A	1
HCA1215/20W	0 98319 73045 9	120V Load Transfer Switch, 20A	1
RSA1224	0 98319 71480 0	120V/24V Transformer Relay, 22A	1
RSA2024	0 98319 71485 5	208V/24V Transformer Relay, 22A	1
RSA2424	0 98319 71490 9	240V/24V Transformer Relay, 22A	1
RSA2724	0 98319 71495 4	277V/24V Transformer Relay, 19A	1
RA1W	0 98319 73047 3	120V Duplex Receptacle	1
DSW2W	0 98319 73049 7	Double-Pole Power On/Off Switch rated 20A @ 120-277V	1
PR24	0 98319 71367 4	Single-Pole Power Relay, 24V/Control rated 30A @ 120-240V, 23A @ 277V	1
PR120	0 98319 71368 1	Same as PR24 except with 120V Control	1
RA1COMPW	0 98319 73048 0	Duplex Receptacle Cover only—carton of 10	1



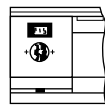
Inside Corner Section



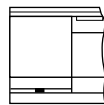
TA1A, TA2A



RA1



HCA

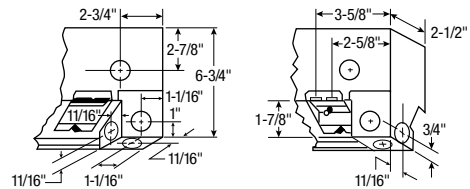


RSA

### FILLER AND BLACK SECTIONS

CATALOG NO.	UPC	DESCRIPTION	SHIP WT. (LBS)
ICAW	0 98319 73050 3	Inside Corner	1
FS12	0 98319 73150 0	1 ft. Filler Section	2
FS24	0 98319 73151 7	2 ft. Filler Section	4
FS36	0 98319 73152 4	3 ft. Filler Section	6
FS48	0 98319 73153 1	4 ft. Filler Section	8
FSJ2	73154 8	2 in. Joiner Strip	1/2
QMKCBDA2W	6 85360 05959 4	2.6 ft. Blank Section	4
QMKCBDA3W	6 85360 05961 7	3 ft. Blank Section	5
QMKCBDA4W	6 85360 05963 1	4 ft. Blank Section	7
QMKCBDA5W	6 85360 05965 5	5 ft. Blank Section	9
QMKCBDA6W	6 85360 05967 9	6 ft. Blank Section	11
QMKCBDA8W	6 85360 05969 3	8 ft. Blank Section	14

NOTE: For high-altitude baseboard heater (mounted above 7,500 ft.), add suffix "H" to catalog number. 8 ft. length baseboards must be ordered in multiples of two pieces for shipment.



Unit length varies with model. See Selection Chart

All knockouts are 7/8" diameter for 1/2" conduit