

CPH & DPH SERIES COMMERCIAL & DECORATIVE PEDESTAL

MADE TO ORDER



IDEAL SPACES

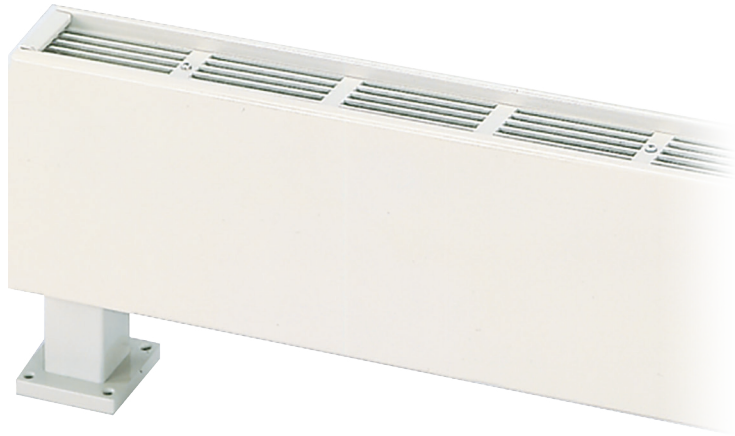
- Institutional and Commercial
- Offices
- Hallways
- Lobbies
- Condos
- Conference Rooms
- Retail Spaces
- Terminals
- Other Areas without Wall Mounting Options

COLORS

- Beige
- Charcoal Gray
- White
- Bronze
- Aluminum
- Black
- Custom Colors Available

DIMENSIONS

- See Specifications



- CPH (Commercial) and DPH (Decorative); ideal for primary, secondary or supplemental heat where wall mounting is not viable
- Perfect for under-the-window heat loss and condensation prevention
- Durable front cover constructed of 16-gauge steel (optional 14-gauge available)
- Pedestal-mounted design; bottom inlet - top outlet
- Units may contain 1-3 heating elements that yield a broad range of heating capacity (see specifications)
- Optional 1/4 in. mesh located under the discharge grille to deter insertion of objects and restriction of airflow
- Blend into any décor with 8 standard color options or custom finishes available upon request
- Units can be mounted from wall-to-wall or as discrete units in standard lengths of 28 in. to 10 ft.
- Optional built-in controls include: line voltage thermostat (SPST or DPST); power on/off switch; power relay; or transformer relay (see specifications)
- Right- or left-hand entry/wiring flexibility with identical pre-wired junction boxes at either end
- Built-in wire way with factory-installed wiring rated 35 amps for CPH05 and 45 amps for CPH07
- Easy connection of supply wiring from bottom, rear or end, as well as multiple wiring of adjacent heaters from one entry point
- For service, all internal parts are accessible by removing cover



www.qmarkmep.com

For Technical Services, Call 800-642-4328

ITEM# QFLY_CPH&DPH_1217-1

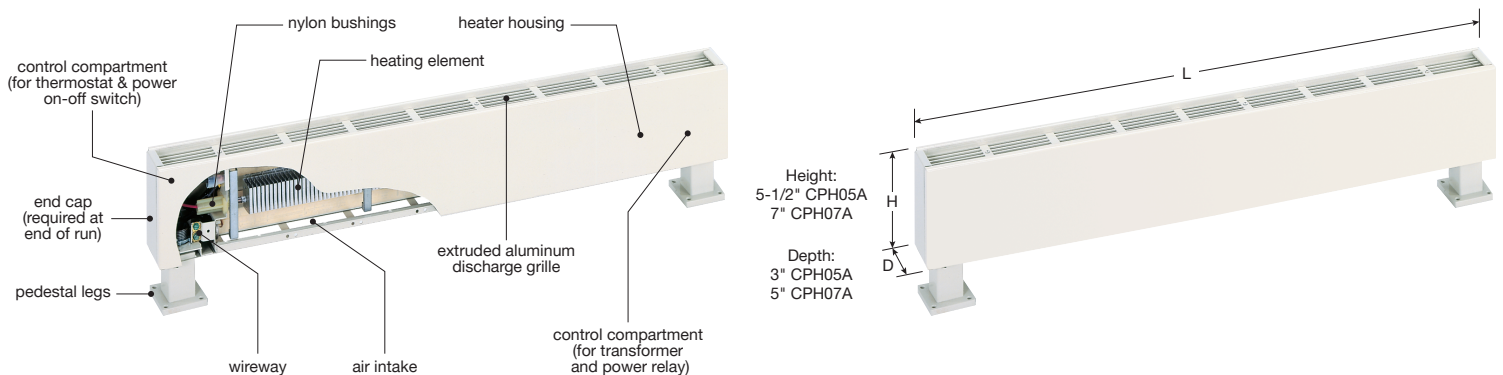


CPH & DPH SERIES

COMMERCIAL & DECORATIVE PEDESTAL

MODELS & SPECIFICATIONS / CPH SERIES (5-1/2" x 3" w/SINGLE ELEMENT)

CATALOG NO	LENGTH (FT)	WATTS PER FT.	TOTAL HEATING CAPACITY		AMPS						NO. OF ELEMENTS	SHIP WT. (LBS)
			TOTAL WATTS	BTU/HR	120V	208V	240V	277V	347V	600V		
CPH05A2125	2.3	125	250	853	2.1	1.2	1.0	0.9	0.7	0.4	1	11
CPH05A2188		188	375	1280	3.1	1.8	1.6	1.4	1.1	0.6		
CPH05A2250		250*	500	1706	4.2	2.4	2.1	1.8	1.4	0.8		
CPH05A3125	3	125	375	1280	3.1	1.8	1.6	1.4	1.1	0.6	1	15
CPH05A3188		188	546	1925	4.7	2.7	2.4	2.0	1.6	0.9		
CPH05A3250		250*	750	2560	6.2	3.6	3.1	2.7	2.2	1.2		
CPH05A4125	4	125	500	1706	4.2	2.4	2.1	1.8	1.4	0.8	1	18
CPH05A4188		188	750	2560	6.2	3.6	3.1	2.7	2.2	1.2		
CPH05A4250		250*	1000	3412	8.3	4.8	4.2	3.6	2.9	1.7		
CPH05A5125	5	125	625	2133	5.2	3.0	2.6	2.3	1.8	1.0	1	25
CPH05A5188		188	940	3208	7.8	4.5	3.9	3.4	2.7	1.6		
CPH05A5250		250*	1250	4266	10.4	6.0	5.2	4.5	3.6	2.1		
CPH05A6125	6	125	750	2560	6.2	3.6	3.1	2.7	2.2	1.2	1	29
CPH05A6188		188	1125	3840	9.4	5.4	4.7	4.1	3.2	1.9		
CPH05A6250		250*	1500	5120	12.5	7.2	6.3	5.4	4.3	2.5		
CPH05A8125	8	125	1000	3412	-	4.8	4.2	3.6	2.8	1.7	1	38
CPH05A8188		188	1500	5120	-	7.2	6.3	5.4	4.3	2.5		
CPH05A8250		250*	2000	6824	-	9.6	8.3	7.2	5.8	3.3		
CPH05A10125	10	125	1250	4266	-	6.0	5.2	4.5	3.6	2.1	1	47
CPH05A10188		188	1875	6400	-	9.0	7.8	6.8	5.4	3.1		
CPH05A10250		250*	2500	8532	-	12.0	10.4	9.0	7.2	4.2		



www.qmarkmep.com

For Technical Services, Call 800-642-4328

ITEM# QFLY_CPH&DPH_1217-1



CONVECTION HEATERS

MODELS & SPECIFICATIONS | CPH SERIES (7" x 5" w/MULTIPLE ELEMENTS)

CATALOG NO	LENGTH (FT)	WATTS PER FT.	TOTAL HEATING CAPACITY		AMPS					NO. OF ELEMENTS	SHIP WT. (LBS)
			TOTAL WATTS	BTU/HR	208V	240V	277V	347V	600V		
					(1 PH / 3 PH)	(1 PH / 3 PH)	(1 PH)	(1 PH)	(1 PH / 3 PH)		
CPH07A2125	2.3	125	250	853	1.2 / -	1.0 / -	0.9	0.7	0.4 / -	1	18
CPH07A2188		188	375	1280	1.8 / -	1.6 / -	1.4	1.1	0.6 / -		
CPH07A2250		250	500	1706	2.4 / -	2.1 / -	1.8	1.4	0.8 / -		
CPH07A2375		375	750	2560	3.6 / -	3.1 / -	2.7	2.2	1.2 / -	2	
CPH07A2500		500	1000	3412	4.8 / -	4.2 / -	3.6	2.9	1.7 / -		
CPH07A2564		564	1125	3840	5.4 / 3.1	4.7 / 2.7	4.1	3.2	1.9 / 1.1	3	
CPH07A2625		625	1250	4266	6.0 / 3.5	5.2 / 3.0	4.5	3.6	2.1 / 1.2		
CPH07A2750		750	1500	5120	7.2 / 4.2	6.3 / 3.6	5.4	4.3	2.5 / 1.4		
CPH07A3125	3	125	375	1280	1.8 / -	1.6 / -	1.4	1.1	0.6 / -	1	22
CPH07A3188		188	564	1925	2.7 / -	2.4 / -	2.0	1.6	0.9 / -		
CPH07A3250		250	750	2560	3.6 / -	3.1 / -	2.7	2.2	1.2 / -		
CPH07A3375		375	1125	3840	5.4 / -	4.7 / -	4.1	3.2	1.9 / -	2	
CPH07A3500		500	1500	5120	7.2 / -	6.3 / -	5.4	4.3	2.5 / -		
CPH07A3564		564	1690	5768	8.1 / 4.7	7.0 / 4.1	6.1	4.8	2.8 / 1.6	3	
CPH07A3625		625	1875	6400	9.0 / 5.2	7.8 / 4.5	6.8	5.4	3.1 / 1.8		
CPH07A3750		750	2250	7680	10.8 / 6.3	9.4 / 5.4	8.1	6.5	3.7 / 2.1		
CPH07A4125	4	125	500	1706	2.4 / -	2.1 / -	1.8	1.4	0.8 / -	1	29
CPH07A4188		188	750	2560	3.6 / -	3.1 / -	2.7	2.2	1.2 / -		
CPH07A4250		250	1000	3412	4.8 / -	4.2 / -	3.6	2.9	1.7 / -		
CPH07A4375		375	1500	5120	7.2 / -	6.3 / -	5.4	4.3	2.5 / -	2	
CPH07A4500		500	2000	6824	9.6 / -	8.3 / -	7.2	5.8	3.3 / -		
CPH07A4564		564	2250	7680	10.8 / 6.3	9.4 / 5.4	8.1	6.5	3.7 / 2.1	3	
CPH07A4625		625	2500	8532	12.0 / 7.0	10.4 / 6.0	9.0	7.2	4.2 / 2.4		
CPH07A4750		750	3000	10239	14.4 / 8.3	12.5 / 7.2	10.8	8.6	5.0 / 2.9		
CPH07A5125	5	125	624	2133	3.0 / -	2.6 / -	2.3	1.8	1.0 / -	1	37
CPH07A5188		188	940	3208	4.5 / -	3.9 / -	3.4	2.7	1.6 / -		
CPH07A5250		250	1250	4266	6.0 / -	5.2 / -	4.5	3.6	2.1 / -		
CPH07A5375		375	1875	6400	9.0 / -	7.8 / -	6.8	5.4	3.1 / -	2	
CPH07A5500		500	2500	8532	12.0 / -	10.4 / -	9.0	7.2	4.2 / -		
CPH07A5564		564	2820	9625	13.6 / 7.8	11.8 / 6.8	10.2	8.1	4.7 / 2.7	3	
CPH07A5625		625	3125	10665	15.0 / 8.7	13.0 / 7.5	11.3	9.0	5.2 / 3.0		
CPH07A5750		750	3750	12800	18.0 / 10.4	15.6 / 9.0	13.5	10.8	6.2 / 3.6		
CPH07A6125	6	125	750	2560	3.6 / -	3.1 / -	2.7	2.2	1.2 / -	1	44
CPH07A6188		188	1125	3840	5.4 / -	4.7 / -	4.1	3.2	1.9 / -		
CPH07A6250		250	1500	5120	7.2 / -	6.3 / -	5.4	4.3	2.5 / -		
CPH07A6375		375	2250	7680	10.8 / -	9.4 / -	8.1	6.5	3.7 / -	2	
CPH07A6500		500	3000	10,239	14.4 / -	12.5 / -	10.8	8.6	5.0 / -		
CPH07A6564		564	3380	11,535	16.3 / 9.4	14.1 / 8.1	12.2	9.7	5.6 / 3.2	3	
CPH07A6625		625	3750	12,800	18.0 / 10.4	15.6 / 9.0	13.5	10.8	6.2 / 3.6		
CPH07A6750		750	4500	15,358	21.6 / 12.5	18.8 / 10.8	16.2	12.9	7.5 / 4.3		
CPH07A8125	8	125	1000	3412	4.8 / -	4.2 / -	3.6	2.9	1.7 / -	1	58
CPH07A8188		188	1500	5120	7.2 / -	6.3 / -	5.4	4.3	2.5 / -		
CPH07A8250		250	2000	6824	9.6 / -	8.3 / -	7.2	5.8	3.3 / -		
CPH07A8375		375	3000	10,239	14.4 / -	12.5 / -	10.8	8.6	5.0 / -	2	
CPH07A8500		500	4000	13,652	19.2 / -	16.7 / -	14.4	11.5	6.7 / -		
CPH07A8564		564	4500	15,358	21.6 / 12.5	18.8 / 10.8	16.2	13.0	7.5 / 4.3	3	
CPH07A8625		625	5000	17,065	24.0 / 13.9	20.8 / 12.0	18.1	14.4	8.3 / 4.8		
CPH07A8750		750	6000	20,478	28.8 / 16.7	25.0 / 14.5	21.7	17.3	10.0 / 5.8		
CPH07A10125	10	125	1250	4266	6.0 / -	5.2 / -	4.5	3.6	2.1 / -	1	72
CPH07A10188		188	1875	6400	9.0 / -	7.8 / -	6.8	5.4	3.1 / -		
CPH07A10250		250	2500	8532	12.0 / -	10.4 / -	9.0	7.2	4.2 / -		
CPH07A10375		375	3750	12,800	18.0 / -	15.6 / -	13.5	10.8	6.2 / -	2	
CPH07A10500		500	5000	17,065	24.0 / -	20.8 / -	18.1	14.4	8.3 / -		
CPH07A10564		564	5640	19,250	27.1 / 15.7	23.5 / 13.6	20.4	16.2	9.4 / 5.4	3	
CPH07A10625		625	6250	21,330	30.0 / 17.4	26.0 / 15.0	22.6	18.0	10.4 / 6.0		
CPH07A10750		750	7500	25,600	36.1 / 20.8	31.3 / 18.1	27.1	21.6	12.5 / 7.2		

NOTE: All models are NON-STOCK, MADE-TO-ORDER. When ordering, specify quantity, catalog number, voltage, wattage, optional controls, and color. Consult sales representative for lead times. OPTIONAL CONTROLS ON PAGE 98.

CPH & DPH SERIES

COMMERCIAL & DECORATIVE PEDESTAL

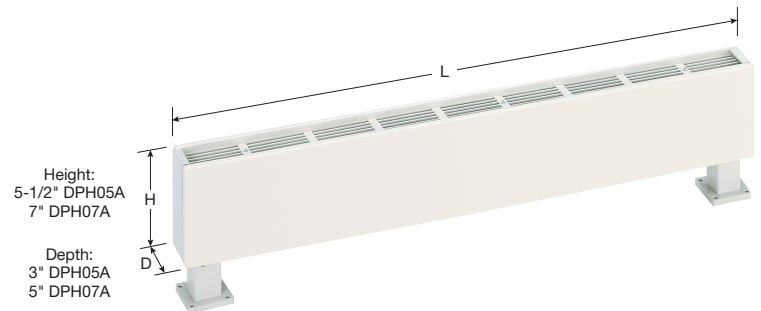
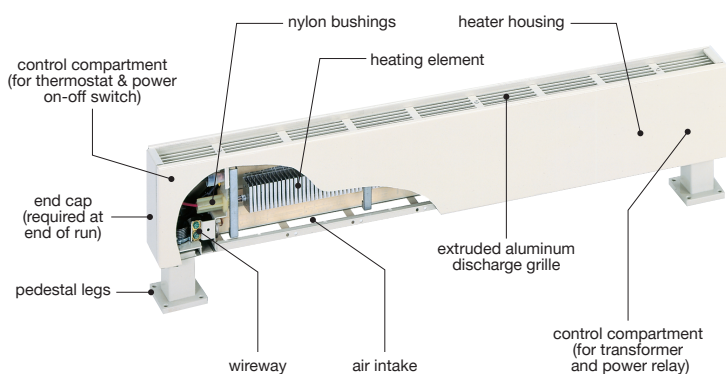
ACCESSORIES / CPH SERIES			
CATALOG NO	DESCRIPTION	COMPATIBLE WITH	SHIP WT. (LBS)
CPH05BL21	28-Inch Blank Section	CPH05A Heaters	10
CPH05BL31	3-Foot Blank Section		13
CPH05BL41	4-Foot Blank Section		17
CPH05BL51	5 Foot Blank Section		21
CPH05BL61	6-Foot Blank Section	CPH05A Heaters	25
CPH05BL81	8-Foot Blank Section		32
CPH05BL101	10-Foot Blank Section		42
CPH07BL21	28-Inch Blank Section	CPH07A Heaters	14
CPH07BL31	3-Foot Blank Section		18
CPH07BL41	4-Foot Blank Section		24
CPH05BL51	5 Foot Blank Section		30
CPH07BL61	6-Foot Blank Section	CPH07A Heaters	36
CPH07BL81	8-Foot Blank Section		48
CPH07BL101	10-Foot Blank Section		60
PHB052	Pedestal Leg Kit for 2, 3 & 4 ft. units	Legs must be ordered with CPH05A Heaters/Blanks	3
PHB053	Pedestal Leg Kit for 5, 6 & 8 ft. units		4
PHB054	Pedestal Leg Kit for 10 ft. unit		5
PHB072	Pedestal Leg Kit for 2, 3 & 4 ft. units	Legs must be ordered with CPH07A Heaters/Blanks	4
PHB073	Pedestal Leg Kit for 5, 6 & 8 ft. units		5
PHB074	Pedestal Leg Kit for 10 ft. unit		7
CSH05ECR	Right Hand End Cap	CPH05A/07A Heaters/Blanks	1
CSH07ECR	Right Hand End Cap		1
CSH05ECL	Left Hand End Cap	CPH05A/07A Heaters/Blanks	1
CSH07ECL	Left Hand End Cap		1

NOTE: OPTIONAL CONTROLS ON PAGE 98. Outlet Mesh: Price per foot. 14-Gauge Front Cover: add 10% to heater price. Standard color included in base price. Other colors available. View paint policy on page 157. If color is not specified, front covers will be neutral grey. Back, grille, and accessories will be statuary bronze. When ordering, specify heater catalog number, voltage, phase, suffix catalog number for built-in controls, color, and options. Specify color for pedestal legs.

CONVECTION HEATERS

MODELS & SPECIFICATIONS / DPH SERIES (5-1/2" x 3" WITH SINGLE ELEMENT)

CATALOG NO	LENGTH (FT)	WATTS PER FT.	TOTAL HEATING CAPACITY		AMPS						NO. OF ELEMENTS	SHIP WT. (LBS)
			TOTAL WATTS	BTU/HR	120V	208V	240V	277V	347V	600V		
DPH05A2125	2.3	125	250	853	2.1	1.2	1.0	0.9	0.7	0.4	1	11
DPH05A2188		188	375	1280	3.1	1.8	1.6	1.4	1.1	0.6		
DPH05A2250		250*	500	1706	4.2	2.4	2.1	1.8	1.4	0.8		
DPH05A3125	3	125	375	1280	3.1	1.8	1.6	1.4	1.1	0.6	1	15
DPH05A3188		188	546	1925	4.7	2.7	2.4	2.0	1.6	0.9		
DPH05A3250		250*	750	2560	6.2	3.6	3.1	2.7	2.2	1.2		
DPH05A4125	4	125	500	1706	4.2	2.4	2.1	1.8	1.4	0.8	1	18
DPH05A4188		188	750	2560	6.2	3.6	3.1	2.7	2.2	1.2		
DPH05A4250		250*	1000	3412	8.3	4.8	4.2	3.6	2.9	1.7		
DPH05A5125	5	125	625	2133	5.2	3.0	2.6	2.3	1.8	1.0	1	25
DPH05A5188		188	940	3208	7.8	4.5	3.9	3.4	2.7	1.6		
DPH05A5250		250*	1250	4266	10.4	6.0	5.2	4.5	3.6	2.1		
DPH05A6125	6	125	750	2560	6.2	3.6	3.1	2.7	2.2	1.2	1	29
DPH05A6188		188	1125	3840	9.4	5.4	4.7	4.1	3.2	1.9		
DPH05A6250		250*	1500	5120	12.5	7.2	6.3	5.4	4.3	2.5		
DPH05A8125	8	125	1000	3412	-	4.8	4.2	3.6	2.8	1.7	1	38
DPH05A8188		188	1500	5120	-	7.2	6.3	5.4	4.3	2.5		
DPH05A8250		250*	2000	6824	-	9.6	8.3	7.2	5.8	3.3		
DPH05A10125	10	125	1250	4266	-	6.0	5.2	4.5	3.6	2.1	1	47
DPH05A10188		188	1875	6400	-	9.0	7.8	6.8	5.4	3.1		
DPH05A10250		250*	2500	8532	-	12.0	10.4	9.0	7.2	4.2		



CPH & DPH SERIES

COMMERCIAL & DECORATIVE PEDESTAL

MODELS & SPECIFICATIONS / DPH SERIES (7" x 5" WITH MULTIPLE ELEMENTS)

CATALOG NO	LENGTH (FT)	WATTS PER FT.	TOTAL HEATING CAPACITY		AMPS					NO. OF ELEMENTS	SHIP WT. (LBS)
			TOTAL WATTS	BTU/HR	208V (1 PH / 3 PH)	240V (1 PH / 3 PH)	277V (1 PH)	347V (1 PH)	600V (1 PH / 3 PH)		
DPH07A2125	2.3	125	250	853	1.2 / -	1.0 / -	0.9	0.7	0.4 / -	1	18
DPH07A2188		188	375	1280	1.8 / -	1.6 / -	1.4	1.1	0.6 / -		
DPH07A2250		250	500	1706	2.4 / -	2.1 / -	1.8	1.4	0.8 / -		
DPH07A2375		375	750	2560	3.6 / -	3.1 / -	2.7	2.2	1.2 / -	2	
DPH07A2500		500	1000	3412	4.8 / -	4.2 / -	3.6	2.9	1.7 / -		
DPH07A2564		564	1125	3840	5.4 / 3.1	4.7 / 2.7	4.1	3.2	1.9 / 1.1	3	
DPH07A2625		625	1250	4266	6.0 / 3.5	5.2 / 3.0	4.5	3.6	2.1 / 1.2		
DPH07A2750		750	1500	5120	7.2 / 4.2	6.3 / 3.6	5.4	4.3	2.5 / 1.4		
DPH07A3125	3	125	375	1280	1.8 / -	1.6 / -	1.4	1.1	0.6 / -	1	22
DPH07A3188		188	564	1925	2.7 / -	2.4 / -	2.0	1.6	0.9 / -		
DPH07A3250		250	750	2560	3.6 / -	3.1 / -	2.7	2.2	1.2 / -		
DPH07A3375		375	1125	3840	5.4 / -	4.7 / -	4.1	3.2	1.9 / -	2	
DPH07A3500		500	1500	5120	7.2 / -	6.3 / -	5.4	4.3	2.5 / -		
DPH07A3564		564	1690	5768	8.1 / 4.7	7.0 / 4.1	6.1	4.8	2.8 / 1.6	3	
DPH07A3625		625	1875	6400	9.0 / 5.2	7.8 / 4.5	6.8	5.4	3.1 / 1.8		
DPH07A3750		750	2250	7680	10.8 / 6.3	9.4 / 5.4	8.1	6.5	3.7 / 2.1		
DPH07A4125	4	125	500	1706	2.4 / -	2.1 / -	1.8	1.4	0.8 / -	1	29
DPH07A4188		188	750	2560	3.6 / -	3.1 / -	2.7	2.2	1.2 / -		
DPH07A4250		250	1000	3412	4.8 / -	4.2 / -	3.6	2.9	1.7 / -		
DPH07A4375		375	1500	5120	7.2 / -	6.3 / -	5.4	4.3	2.5 / -	2	
DPH07A4500		500	2000	6824	9.6 / -	8.3 / -	7.2	5.8	3.3 / -		
DPH07A4564		564	2250	7680	10.8 / 6.3	9.4 / 5.4	8.1	6.5	3.7 / 2.1	3	
DPH07A4625		625	2500	8532	12.0 / 7.0	10.4 / 6.0	9.0	7.2	4.2 / 2.4		
DPH07A4750		750	3000	10239	14.4 / 8.3	12.5 / 7.2	10.8	8.6	5.0 / 2.9		
DPH07A5125	5	125	624	2133	3.0 / -	2.6 / -	2.3	1.8	1.0 / -	1	37
DPH07A5188		188	940	3208	4.5 / -	3.9 / -	3.4	2.7	1.6 / -		
DPH07A5250		250	1250	4266	6.0 / -	5.2 / -	4.5	3.6	2.1 / -		
DPH07A5375		375	1875	6400	9.0 / -	7.8 / -	6.8	5.4	3.1 / -	2	
DPH07A5500		500	2500	8532	12.0 / -	10.4 / -	9.0	7.2	4.2 / -		
DPH07A5564		564	2820	9625	13.6 / 7.8	11.8 / 6.8	10.2	8.1	4.7 / 2.7	3	
DPH07A5625		625	3125	10665	15.0 / 8.7	13.0 / 7.5	11.3	9.0	5.2 / 3.0		
DPH07A5750		750	3750	12800	18.0 / 10.4	15.6 / 9.0	13.5	10.8	6.2 / 3.6		
DPH07A6125	6	125	750	2560	3.6 / -	3.1 / -	2.7	2.2	1.2 / -	1	44
DPH07A6188		188	1125	3840	5.4 / -	4.7 / -	4.1	3.2	1.9 / -		
DPH07A6250		250	1500	5120	7.2 / -	6.3 / -	5.4	4.3	2.5 / -		
DPH07A6375		375	2250	7680	10.8 / -	9.4 / -	8.1	6.5	3.7 / -	2	
DPH07A6500		500	3000	10,239	14.4 / -	12.5 / -	10.8	8.6	5.0 / -		
DPH07A6564		564	3380	11,535	16.3 / 9.4	14.1 / 8.1	12.2	9.7	5.6 / 3.2	3	
DPH07A6625		625	3750	12,800	18.0 / 10.4	15.6 / 9.0	13.5	10.8	6.2 / 3.6		
DPH07A6750		750	4500	15,358	21.6 / 12.5	18.8 / 10.8	16.2	12.9	7.5 / 4.3		
DPH07A8125	8	125	1000	3412	4.8 / -	4.2 / -	3.6	2.9	1.7 / -	1	58
DPH07A8188		188	1500	5120	7.2 / -	6.3 / -	5.4	4.3	2.5 / -		
DPH07A8250		250	2000	6824	9.6 / -	8.3 / -	7.2	5.8	3.3 / -		
DPH07A8375		375	3000	10,239	14.4 / -	12.5 / -	10.8	8.6	5.0 / -	2	
DPH07A8500		500	4000	13,652	19.2 / -	16.7 / -	14.4	11.5	6.7 / -		
DPH07A8564		564	4500	15,358	21.6 / 12.5	18.8 / 10.8	16.2	13.0	7.5 / 4.3	3	
DPH07A8625		625	5000	17,065	24.0 / 13.9	20.8 / 12.0	18.1	14.4	8.3 / 4.8		
DPH07A8750		750	6000	20,478	28.8 / 16.7	25.0 / 14.5	21.7	17.3	10.0 / 5.8		
DPH07A10125	10	125	1250	4266	6.0 / -	5.2 / -	4.5	3.6	2.1 / -	1	72
DPH07A10188		188	1875	6400	9.0 / -	7.8 / -	6.8	5.4	3.1 / -		
DPH07A10250		250	2500	8532	12.0 / -	10.4 / -	9.0	7.2	4.2 / -		
DPH07A10375		375	3750	12,800	18.0 / -	15.6 / -	13.5	10.8	6.2 / -	2	
DPH07A10500		500	5000	17,065	24.0 / -	20.8 / -	18.1	14.4	8.3 / -		
DPH07A10564		564	5640	19,250	27.1 / 15.7	23.5 / 13.6	20.4	16.2	9.4 / 5.4	3	
DPH07A10625		625	6250	21,330	30.0 / 17.4	26.0 / 15.0	22.6	18.0	10.4 / 6.0		
DPH07A10750		750	7500	25,600	36.1 / 20.8	31.3 / 18.1	27.1	21.6	12.5 / 7.2		

NOTE: All models are NON-STOCK, MADE-TO-ORDER. When ordering, specify quantity, catalog number, voltage, wattage, optional controls, and color. Consult sales representative for lead times. **OPTIONAL CONTROLS ON PAGE 98.**

CONVECTION HEATERS

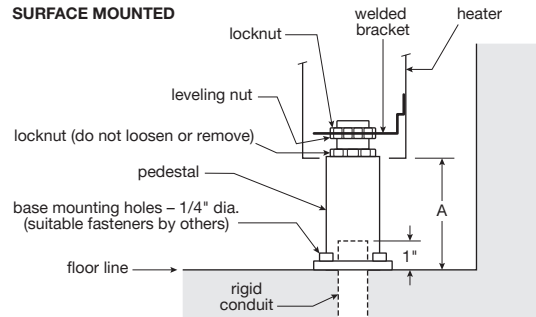
ACCESSORIES / DPH SERIES			
CATALOG NO	DESCRIPTION	COMPATIBLE WITH	SHIP WT. (LBS)
DPH05BL21	28-Inch Blank Section	DPH05A Heaters	10
DPH05BL31	3-Foot Blank Section		13
DPH05BL41	4-Foot Blank Section		17
DPH05BL51	5 Foot Blank Section		21
DPH05BL61	6-Foot Blank Section	DPH05A Heaters	25
DPH05BL81	8-Foot Blank Section		32
DPH05BL101	10-Foot Blank Section		42
DPH07BL21	28-Inch Blank Section	DPH07A Heaters	14
DPH07BL31	3-Foot Blank Section		18
DPH07BL41	4-Foot Blank Section		24
DPH05BL51	5 Foot Blank Section		30
DPH07BL61	6-Foot Blank Section	DPH07A Heaters	36
DPH07BL81	8-Foot Blank Section		48
DPH07BL101	10-Foot Blank Section		60
PHB052	Pedestal Leg Kit for 2, 3 & 4 ft. units	Legs must be ordered with DPH05A Heaters/Blanks	3
PHB053	Pedestal Leg Kit for 5, 6 & 8 ft. units		4
PHB054	Pedestal Leg Kit for 10 ft. unit		5
PHB072	Pedestal Leg Kit for 2, 3 & 4 ft. units	Legs must be ordered with DPH07A Heaters/Blanks	4
PHB073	Pedestal Leg Kit for 5, 6 & 8 ft. units		5
PHB074	Pedestal Leg Kit for 10 ft. unit		7
DSH05ECR	Right Hand End Cap	DPH05A/07A Heaters/Blanks	1
DSH07ECR	Right Hand End Cap		1
DSH05ECL	Left Hand End Cap	DPH05A/07A Heaters/Blanks	1
DSH07ECL	Left Hand End Cap		1

NOTE: **OPTIONAL CONTROLS ON PAGE 98.** Outlet Mesh: Price per foot. 14-Gauge Front Cover: add 10% to heater price. Standard color included in base price. Other colors available. View paint policy on page 157. If color is not specified, front covers will be neutral grey. Back, grille, and accessories will be statuary bronze. When ordering, specify heater catalog number, voltage, phase, suffix catalog number for built-in controls, color, and options. Specify color for pedestal legs.

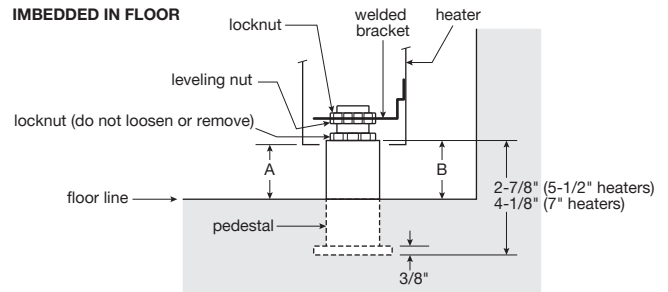
CPH & DPH SERIES COMMERCIAL & DECORATIVE PEDESTAL

ACCESSORIES / CPH & DPH SERIES					
CATALOG NO	COMPATIBLE WITH	HEIGHT (IN)	DEPTH (IN)	LENGTH (IN)	ADDT'L LENGTH* (IN)
LEFT END CAPS					
CSH05ECL**	CPH05	5-1/2	2-1/2	-	1/8
CSH07ECL**	CPH07	7	4-3/4		
DSH05ECL**	DPH05	5-1/2	2-1/2		
DSH07ECL**	DPH07	7	4-3/4		
RIGHT END CAPS					
CSH05ECR**	CPH05	5-1/2	2-1/2	-	1/8
CSH07ECR**	CPH07	7	4-3/4		
DSH05ECR**	DPH05	5-1/2	2-1/2		
DSH07ECR**	DPH07	7	4-3/4		
PEDESTAL LEGS (FOR CPH05 AND DPH05 HEATERS)					
PHB052**	2, 3, & 4 ft. heaters and blank sections				
PHB053**	5, 6, & 8 ft. heaters and blank sections				
PHB054**	10 ft. heaters and blank sections				
PEDESTAL LEGS (FOR CPH07 AND DPH07 HEATERS)					
PHB072**	2, 3, & 4 ft. heaters and blank sections				
PHB073**	5, 6, & 8 ft. heaters and blank sections				
PHB074**	10 ft. heaters and blank sections				
BLANK SECTIONS (CPH05)					
CPH05BL21	CPH05	5-1/2	3	28	28
CPH05BL31				36	36
CPH05BL41				48	48
CPH05BL51				60	60
CPH05BL61				72	72
CPH05BL81				96	96
CPH05BL101				120	120
BLANK SECTIONS (CPH07)					
CPH07BL21	CPH07	7	5	28	28
CPH07BL31				36	36
CPH07BL41				48	48
CPH07BL51				60	60
CPH07BL61				72	72
CPH07BL81				96	96
CPH07BL101				120	120
BLANK SECTIONS (DPH05)					
DPH05BL21	DPH05	5-1/2	3	28	28
DPH05BL31				36	36
DPH05BL41				48	48
DPH05BL51				60	60
DPH05BL61				72	72
DPH05BL81				96	96
DPH05BL101				120	120
BLANK SECTIONS (DPH07)					
DPH07BL21	DPH07	7	5	28	28
DPH07BL31				36	36
DPH07BL41				48	48
DPH07BL51				60	60
DPH07BL61				72	72
DPH07BL81				96	96
DPH07BL101				120	120

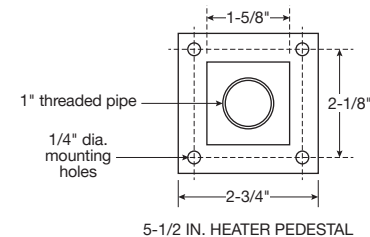
SURFACE MOUNTED



IMBEDDED IN FLOOR

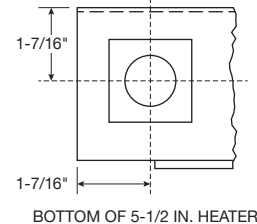


PEDESTAL DETAILS

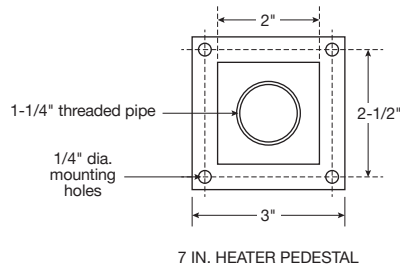


5-1/2 IN. HEATER PEDESTAL

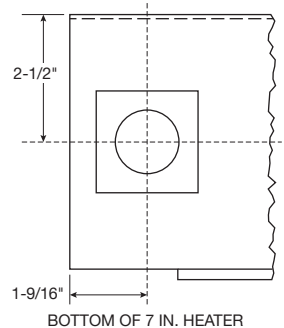
PEDESTAL LOCATION



BOTTOM OF 5-1/2 IN. HEATER



7 IN. HEATER PEDESTAL



BOTTOM OF 7 IN. HEATER

NOTE: *Additional length the accessory adds to the total installation. **Built-in duplex receptacle available.

MOUNTING		
HEATER CAPACITY (Watt/Ft.)	HEATER DIMENSION A (IN.) (Min. Mounting Height Above Floor)	PEDESTAL DIMENSION B (IN.) (Min. Height Above Floor)
125, 188 and 250	1-3/4	2
375, 500, 564, 625 and 750	3	3-1/4

MOUNTING		
CATALOG NO.	HEIGHT ABOVE FLOOR (IN.)	
	MIN.	MAX.
DPH05	2-5/8	3-3/8
DPH07	3-7/8	4-5/8