

LED EMERGENCY KIT • 55705

INSTALL INSTRUCTIONS



PLEASE FIND A QUALIFIED ELECTRICIAN FOR INSTALLATION. Please read the instructions before you install and use.

SAFETY INSTRUCTIONS

- Risk of fire or electric shock. Luminaire wiring and electrical parts may be damaged when drilling for installation of LED emergency backup. Check for enclosed wiring and components.
- Risk of fire or electric shock. This LED emergency backup installation requires knowledge of luminaire electrical systems. If not qualified, do not attempt installation. Contact a qualified electrician.
- Risk of fire or electric shock. This LED emergency backup is only for use in surface mount or recessed Type IC or Non-IC luminaires listed to UL Standards.
- Risk of fire or electric shock. Do not alter, relocate, or remove wiring, lampholders, power supply, or any other electrical component.
- Suitable for use in damp location and plenum spaces. Not for use in heated air outlets or hazardous locations.
- Before installing, make certain the AC power to the fixture is off.
- The electrical rating of this product is 120-277V. Installer must confirm that the supply voltage is correct before installation.
- This LED Emergency Kit requires an un-switched AC power source of 100-277Vac, 50/60Hz. The AC driver must be on the same branch circuit as the LED Emergency Kit.
- To prevent electrical shock, only connect test switch/indicator connector after installation is complete and before the AC power to the fixture is back on.
- To prevent wiring damage or abrasion, do not expose wiring to edges of sheet metal or other sharp objects.
- Equipment should be mounted in locations and at heights where it is not subjected to tampering by unauthorized personnel.
- Do not make or alter any open holes of the wiring enclosure or electrical component enclosure during installation. Only those open holes indicated in the instructions and/or drawings may be added or altered as a result of LED emergency Backup installation. Do not leave any other open holes in the wiring enclosure or electrical component enclosure during installation.
- Do not look directly at the LED light source when the power is on for an extended amount of time, doing so may cause harm to the eyes.
- Verify all replacement lamp types installed in the luminaire are suitable for use with emergency battery pack.
- Use caution when handling batteries. Battery acid can cause burns to the skin and eyes. If acid comes in contact with skin or eyes, thoroughly flush with fresh water and contact a physician immediately.
- Do not connect battery pack connector until all other wiring is complete and AC power is on.
- Do not use outdoors.
- Do not let power supply cords touch hot surfaces.
- Do not mount near gas or electric heaters.
- Do not use this equipment for other than its intended use.
- The use of accessory equipment is not recommended by the manufacturer and may cause an unsafe condition.
- Do not use this equipment for other than its intended use.
- Use with grounded, UL Listed, dry or damp location rated fixtures.

This product contains a rechargeable lithium-ion battery. The battery must be recycled or disposed of properly.

DETERMINING ADEQUACY OF MEANS-OF-EGRESS LIGHTING LEVELS

Follow industry standards by utilizing available .ies files and lighting design software for your dedicated emergency luminaires, with the calculated emergency lumens, and validate your as-installed plans in accordance with the applicable life safety codes governing the project.

While these products are compliant with the requirements of UL Standard 924, it is ultimately the responsibility of the designer/specifier to assure the as-installed systems delivers a code compliant path of egress illumination in accordance with federal, state, and local municipal requirements.

SAVE THESE INSTRUCTIONS

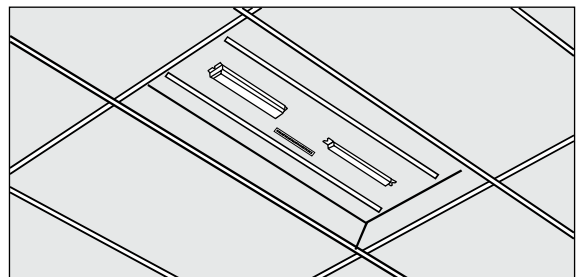


WARNING DISCONNECT POWER BEFORE INSTALLING OR SERVICING.

1. INSTALLING LED EMERGENCY DRIVER & BATTERY PACK

(Mounting inside the fixture is recommended)

- Disconnect AC power from the LED fixture.
- Remove the diffuser cover from the fixture.
- Remove all original lamps, and ballast channel/wire cover from the fixture.
- Install the Emergency Driver and Battery Pack to the fixture. Use existing mounting holes in the fixture or make new holes as needed.



LED EMERGENCY KIT • 55705

INSTALL INSTRUCTIONS



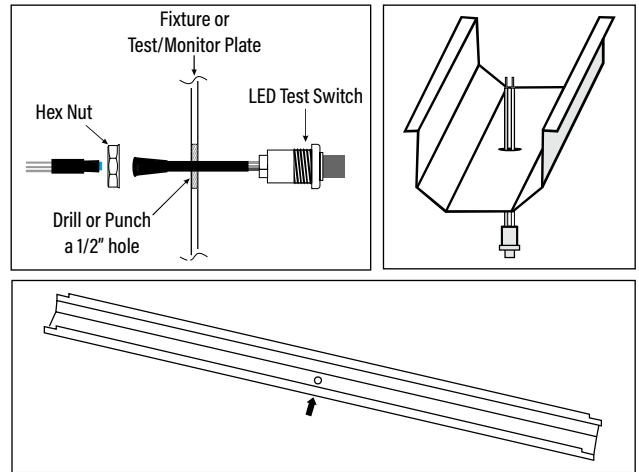
! WARNING DISCONNECT POWER BEFORE INSTALLING OR SERVICING.

2. INSTALLING LED MODULE

- A. Select the appropriate locations for the LED Emergency Module, to provide maximum downward light. *Note: The LED Module should not be located behind any metal work or existing lamps the fixture is using.*
- B. Install the LED Emergency Module to the fixture.

3. INSTALLING LED TEST SWITCH ON FIXTURE SURFACE

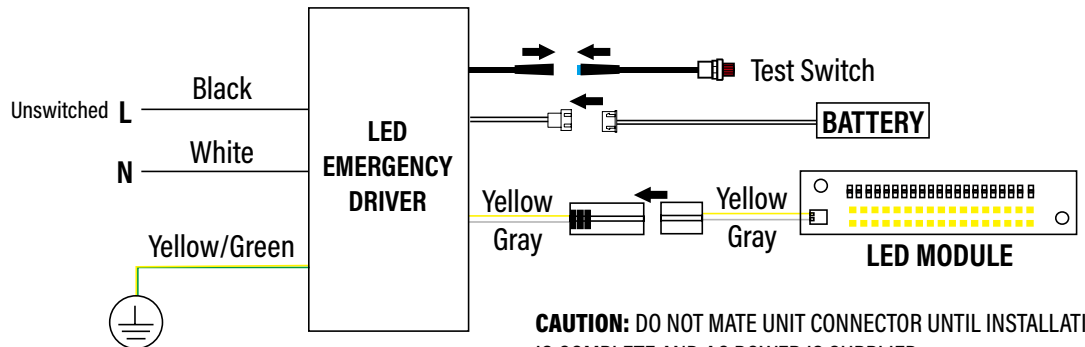
- A. Install the test switch in a location where it is visible and easy to maintain after installation.
- B. Drill a 1/2" (12mm) hole for mounting the test switch or look for a knockout located on the fixture.
- C. Wire the test switch per wiring diagram below.
- D. Re-install the original LED lamps, driver cover, and diffuser.
- E. Turn on AC power to the fixture and confirm LED Module turns off and original fixture light source comes back on.
- F. Push test button to confirm test button is functioning properly. Original fixture light source should turn off and LED Module should illuminate.



WIRING DIAGRAM

(Case must be grounded)

- For short-term testing of the emergency function, the battery must be charged for at least one hour. The emergency driver must be charged for at least 24 hours before conducting a long-term test.



CAUTION: DO NOT MATE UNIT CONNECTOR UNTIL INSTALLATION IS COMPLETE AND AC POWER IS SUPPLIED.

OPERATION

AC OPERATION: Switched AC power is present to fixture; un-switched AC power is present to LED Emergency Kit from the same branch circuit. The AC driver operates the LED load as designed. The emergency pack is charging in a stand-by mode. The charging indicator will be lit, showing the battery is charging.

EMERGENCY OPERATION: When the AC power goes out, the LED Emergency Kit detects the power outage and automatically switches to emergency mode. The charging indicator will be off. The LED load is illuminated for a minimum of 90 minutes. When AC power is restored, the LED Emergency Kit switches back to normal and starts to recharge.

TESTING AND MAINTENANCE

Press the test button to cut the power to the AC driver and switch the system to emergency mode. Release the test button to return to normal mode. Switch off the circuit breaker to simulate a full power outage. For initial testing, allow the unit to charge approximately 1 hour, then conduct a short discharge test. Allow 24 hour charge before conducting a one hour test.

Periodic tests are recommended to ensure the system is functioning normally:

1. Visually inspect the test switch monthly. It should be illuminated when the AC power is applied.
2. Monthly - Conduct a 30 second discharge test by switching off the main power.
3. Annually - Conduct a 90 minute discharge test once per year. The load should be illuminated for at least 90 minutes.

Written records of the testing should be kept by the owner for inspection by authorities having jurisdiction.

LED TEST SWITCH INDICATION

Red Stable: Charging mode or full charge

Red Off: Discharging mode or main power off