

OPERATION MANUAL

BLINK 15" & 19" PENDANT ACCESSORY KIT

(Light fixture sold separately)



Thank you for purchasing our product. Before assembling please read carefully this Operation Manual and save in a safe place for future reference. Please note that all electrical connections must be in accordance with local and National Electrical Code standards as well as local building code. In case you are not familiar with proper wiring connections and building codes consult a qualified electrician.



National Toll-Free:
800.43.SATCO
(800.437.2826)
www.satco.com

Distribution Centers:
New York, Florida, Texas,
Washington, California,
Puerto Rico

Corporate Offices:
110 Heartland Blvd.,
Brentwood, NY 11717
800.437.2826 631.243.2022
Fax 631.243.2027

Technical Data

The suspension height is adjustable, up to 55 inches from the ceiling.

SAFETY RECOMMENDATIONS

1. RISK OF ELECTRIC SHOCK – THIS PRODUCT MUST BE INSTALLED IN ACCORDANCE WITH APPLICABLE INSTALLATION CODES BY A PERSON FAMILIAR WITH MENTIONED ABOVE CODES AND HAZARDS INVOLVED. DISCONNECT POWER AT CIRCUIT BREAKER OR FUSE BEFORE INSTALLING OR SERVICING.
2. Before use of the product read carefully the whole Operation Manual.
3. THE PRODUCT IS PURPOSED FOR INTERIOR USE ONLY. SUITABLE FOR DAMP LOCATIONS
4. Protect the product against direct contact with water.
5. Assemble the product only with the use of parts provided and the housing; improper assembly may result in device falling which could damage the product, personal property or cause injury.
6. Assembly shall follow with accessories delivered with the set only.
7. KEEP OUT OF REACH OF CHILDREN.

CLEANING AND STORAGE

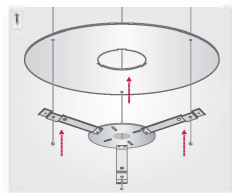
- Clean with a soft or damp cloth. While cleaning with the damp cloth make sure the power is off.
- Do not clean with liquids or abrasives.
- Store at ambient temperature.

FIVE YEAR LIMITED WARRANTY

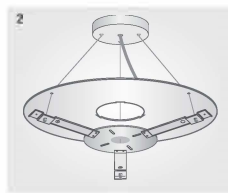
The purchased product is covered with Five year (60 months) warranty in respect of any defect in material or workmanship after purchase date.

SATCO shall bear no responsibility on account of warranty, as well as shall bear no liability for any faults, in case of improper operation, use, negligence, accident or exposure to natural hazard, or excessive use over the limits specified for the unit, or if any unauthorized alteration or repair followed.

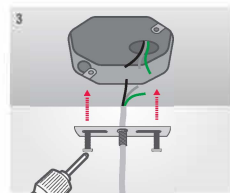
INSTALLATION [Nine simple steps].



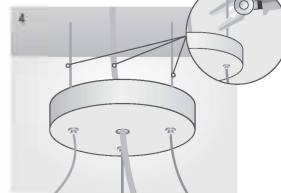
Step 1
Feed the 3 suspension wires through the holes in bracket (supplied with Blink Plus fixture) and decorative cover as shown.



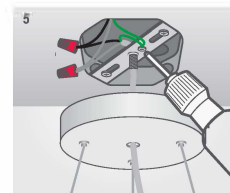
Step 2
Put electrical cord and decorative nut on the electrical cable as shown. Then insert end of the steel wire into the ceiling base as shown and put the electric cable through the central hole.



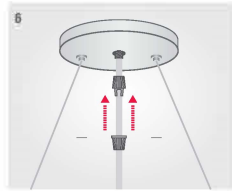
Step 3
Attach the ceiling bracket into the junction box. Screws supplied with Blink Plus fixture.



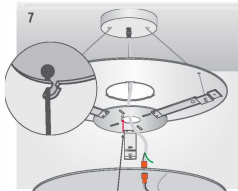
Step 4
Cut the electric cable and steel wire to the desired hanging height.



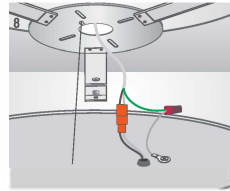
Step 5
Push the cable into the threaded pipe on the bracket. Connect wires to AC cables from junction box with wire nuts (provided): L side to Black AC wire, W side to White AC wire. Connect the grounding wire to the grounding screw on the bracket.



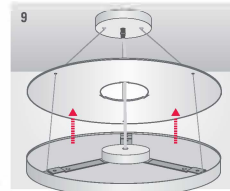
Step 6
lock the cable clamp on the metal pipe with thread.



Step 7
Hang the light fixture on the convenience wire.



Step 8
Make the electrical connections. Push cables inside the connection hub cover and twist the light fixture and the bracket together as shown.






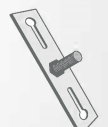





Step 9
Place decorative cover over top of fixture and ensure connection hub cover is snapped into place as shown.



Enjoy your light!

ACCESSORY KIT

 Decorative cover - 1 pc	 Electrical Cord & Ceiling Canopy - 1 pc	 Wire nut - 3 pcs
 Connection hub cover - 1 pc	 Steel wires - 3 pcs	 Bracket - 1 pc
 8/32 ground screw - 2 pcs	 M4 short screw - 1 pc	 033 pendent clamp - 2 pcs