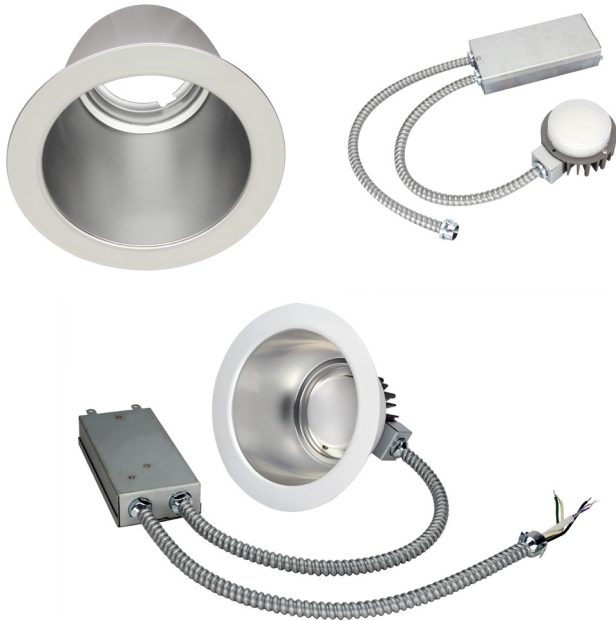


LED 20W COMMERCIAL RECESSED RETROFIT DOWNLIGHT

RRC SERIES



PRODUCT DESCRIPTION:

The RRC family of LED Downlight retrofits is a highly efficient option for upgrading existing Incandescent, Fluorescent and Metal Halide downlight fixtures to energy saving LED. The highly efficient design allows users to capture energy savings while also gaining the benefit of dimming. Compatible with many architectural and commercial downlight housings this retrofit can be used in most downlight applications. Suitable for Damp locations.

FEATURES:

- Mounts into existing recessed frame
- Supplied with optional retaining clips if existing frame does not have adequate friction springs to secure reflector.
- cULus listed for damp location use
- 120V only (Triac Dimming)
- 0-10V Dimming (120-277V) Universal Voltage
- 0-10V dimming and Triac dimming drivers available
- CRI: >80
- A wide variety of CCTs available
- Five year limited warranty
- Integrated EM option available
- Type IC

CONSTRUCTION:

- Anodized aluminum reflector with a white trim ordered separately
- External driver for easy retrofit and maintenance

HOW TO ORDER:

1. Choose the light engine for desired CCT and dimming requirements.
2. Ensure that the light engines you have selected is compatible with the reflector size required by your project.

MODEL SELECTION (Full list of order codes on pg. 2)		Typical order example: RRXC20U30Z + RRC6-RFL			
RRXC	20	U			
FAMILY	LUMENS (NOMINAL)	VOLTAGE	CCT**	DIMMING TYPE	EM OPTION
RRXC= Commercial Recessed Retrofit Downlight	20= 2000 lm @20W	U= 120V (only) Triac Dimming 120-277V (0-10V Dimming***)	30= 3000K 35= 3500K 40= 4000K	(OMIT)= Triac Dimming Z = 0-10V Dimming	(OMIT) = None EM = Integrated EM Option w/ 0-10V dimming

*Additional wattages available. Please contact your MaxLite representative for more information on the entire RRC Series.

**EM option not Energy Star qualified

*** 2700K and 5000K only made to order

*** 120-277V (Universal Voltage) Available Only in 0-10V Model

SPECIFICATIONS:

		ENGINE	RRXC20U40Z	RRXC20U40Z	RRXC20U40Z
		REFLECTOR	RRC6-RFL	RRC8-RFL	RRC9-RFL
ITEM	SPECIFICATION	DETAILS			
GENERAL PERFORMANCE	Power Consumption (W)	18.7 W	18.7 W	18.7 W	18.8 W
	Lumens Delivered (lm)	1,793 lm	1,767 lm	1,767 lm	1,920 lm
	Efficacy (lm/W)	96 lm/W	94 lm/W	94 lm/W	102 lm/W
	Color Temperature	3000K, 3500K, 4000K			
	L70 Lifetime (hours)	50,000			
	Color Consistency	Proprietary binning for uniform color, SDCM <4			
	CRI	>80			
ELECTRICAL	Power Factor	≥0.9			
	Input Voltage	120-277V (Triac 120V only)			
	Compatible Dimmers	Compatible with 0-10V dimmers. For Triac dimming option, see list of compatible dimmers below.			
PHYSICAL	Weight	2 lbs			
	Mounting	Mounts into existing recessed frame			
	Operating Temperature	0° – 104° F			
	Humidity	20% - 85% RH, non-condensing			
CERTIFICATION	Certification	cULs Classified, FCC, Energy Star			
	Material Usage	RoHS compliant; no mercury			
	Environment	Indoor Damp/ Type IC			
	Warranty	5 years			

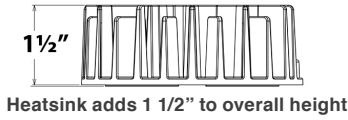
*** CAUTION: A light engine should only be used with a reflector that is listed as compatible. Any other engine/reflector pairing is not covered by this product's UL Listing, and could be hazardous!**

* Calculated data for 4000K light engines

COMPATIBLE TRIAC DIMMERS:

MFG.	MODEL NUMBER
Lutron	DVA DVELV
Lutron	LGCL-153P
Lutron	S-600P
Lutron	DVCL-253P
Lutron	DV-600P
Lutron	SCL-153P
Lutron	SELV-300P
Lutron	IPL06
Lutron	6673-P

REFLECTOR ORDERING:

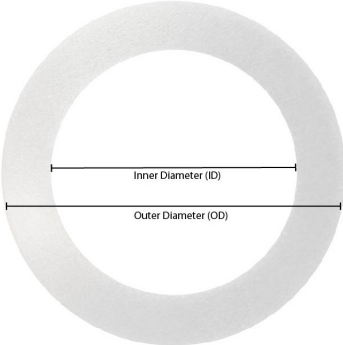


ORDER CODE	REFLECTOR MODEL NUMBER	REFLECTOR SIZE	
1410091	RRC6-RFL	6"	
1410092	RRC8-RFL	8"	
1410093	RRC9-RFL	9"	

ENGINE ORDERING:

ORDER CODE	MODEL	CCT	DIMMING
1410063	RRXC20U30	3000K	Triac
14099680	RRXC20U35	3500K	
1410066	RRXC20U40	4000K	
1410064	RRXC20U30Z	3000K	0-10V
100368	RRXC20U35Z	3500K	
1410067	RRXC20U40Z	4000K	
1410065	RRXC20U30ZEM	3000K	
14099675	RRXC20U35ZEM	3500K	
1410068	RRXC20U40ZEM	4000K	

ACCESSORIES:

ORDER CODE	MODEL	DESCRIPTION	PRODUCT IMAGE
14099684	RR-XRING6	6" Trim Extender ID:6.24", OD: 8.75"	
14099685	RR-XRING8	8" Trim Extender ID:7.84", OD: 10.40"	
14099686	RR-XRING9	9" Trim Extender ID:9.50", OD: 11.90"	