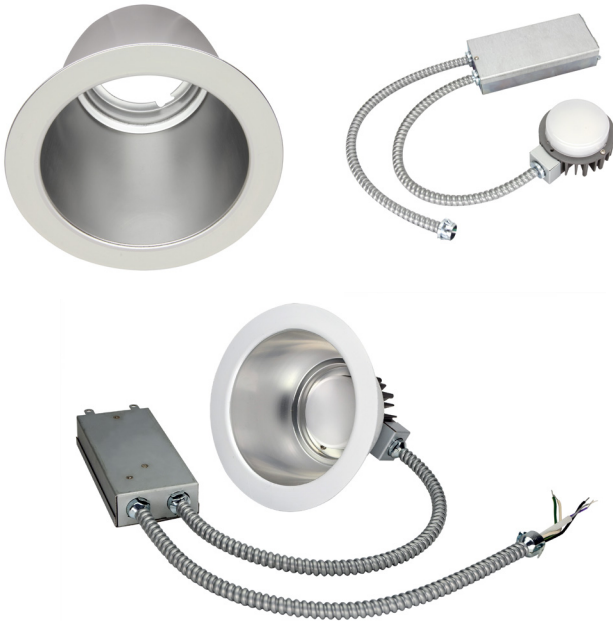


## LED 15W COMMERCIAL RECESSED RETROFIT DOWNLIGHT

### RRC SERIES



### PRODUCT DESCRIPTION:

The RRC family of LED Downlight retrofits is a highly efficient option for upgrading existing Incandescent, Fluorescent and Metal Halide downlight fixtures to energy saving LED. The highly efficient design allows users to capture energy savings while also gaining the benefit of dimming. Compatible with many architectural and commercial downlight housings this retrofit can be used in most downlight applications. Suitable for Damp locations.

### FEATURES:

- Mounts into existing recessed frame
- Supplied with optional retaining clips if existing frame does not have adequate friction springs to secure reflector.
- cULus listed for damp location use
- Universal voltage (120-277) (Triac 120V only)
- 0-10V dimming and Triac dimming drivers available
- CRI: >80
- A wide variety of CCTs available
- Five year limited warranty
- Integrated EM option available
- Type IC

### CONSTRUCTION:

- Anodized aluminum reflector with a white trim ordered separately
- External driver for easy retrofit and maintenance

### HOW TO ORDER:

1. Choose the light engine for desired CCT and dimming requirements.
2. Ensure that the light engines you have selected is compatible with the reflector size required by your project.

MODEL SELECTION (Full list of order codes on pg. 2)		Typical order example: RRXC15U30Z + RRC4-RFL			
RRXC	15	U			
FAMILY	LUMENS (NOMINAL)	VOLTAGE	CCT**	DIMMING TYPE	EM OPTION
RRXC= Commercial Recessed Retrofit Downlight	15= 1350 lm @14W	U= 120V (Triac Dimming) 120-277V (0-10V Dimming)	30= 3000K 35= 3500K 40= 4000K	(OMIT)= Triac Dimming Z = 0-10V Dimming	(OMIT) = None EM = Integrated EM Option w/ 0-10V dimming

\*Additional wattages available. Please contact your MaxLite representative for more information on the entire RRC Series.

\*EM option not Energy Star qualified

\*\* 2700K and 5000K only made to order

**SPECIFICATIONS:**

		ENGINE	RRXC15U40Z	RRXC15U40Z	RRXC15U40Z	RRXC15U40Z
		REFLECTOR	RRC4-RFL	RRC6-RFL	RRC8-RFL	RRC9-RFL
ITEM	SPECIFICATION	DETAILS				
<b>GENERAL PERFORMANCE</b>	Power Consumption (W)	13.3 w	13.3 w	13.3 w	13.3 w	13.3 w
	Lumens Delivered (lm)	1,184 lm	1,239 lm	1,221 lm	1,221 lm	1,322 lm
	Efficacy (lm/W)	89 lm/W	93 lm/W	92 lm/W	92 lm/W	99 lm/W
	Color Temperature	3000K, 3500K, 4000K				
	L70 Lifetime (hours)	50,000				
	Color Consistency	Proprietary binning for uniform color, SDCM <4				
	CRI	>80				
<b>ELECTRICAL</b>	Power Factor	≥0.9				
	Input Voltage	120-277V (Triac 120V only)				
	Compatible Dimmers	Compatible with 0-10V dimmers. For Triac dimming option, see list of compatible dimmers below.				
<b>PHYSICAL</b>	Weight	2 lbs				
	Mounting	Mounts into existing recessed frame				
	Operating Temperature	0° – 104° F				
	Humidity	20% - 85% RH, non-condensing				
<b>CERTIFICATION</b>	Certification	cULs Classified, FCC, Energy Star				
	Material Usage	RoHS compliant; no mercury				
	Environment	Indoor Damp/ Type IC				
	Warranty	5 years				

\* CAUTION: A light engine should only be used with a reflector that is listed as compatible. Any other engine/reflector pairing is not covered by this product's UL Listing, and could be hazardous!

\*Calculated data for 4000K light engines

**ENGINE ORDERING:**

ORDER CODE	MODEL	CCT	DIMMING
1410054	RRXC15U30	3000K	Triac
14099679	RRXC15U35	3500K	
1410057	RRXC15U40	4000K	
1410055	RRXC15U30Z	3000K	0-10V
100353	RRXC15U35Z	3500K	
1410058	RRXC15U40Z	4000K	
1410056	RRXC15U30ZEM	3000K	
14099674	RRXC15U35ZEM	3500K	
1410059	RRXC15U40ZEM	4000K	

**REFLECTOR ORDERING:**



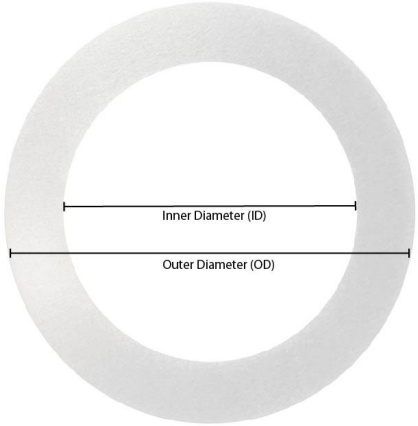
Heatsink adds 1 1/2" to overall height

ORDER CODE	REFLECTOR MODEL NUMBER	REFLECTOR SIZE	
1410090	RRC4-RFL	4"	
1410091	RRC6-RFL	6"	
1410092	RRC8-RFL	8"	
1410093	RRC9-RFL	9"	

**COMPATIBLE TRIAC DIMMERS:**

MFG.	MODEL NUMBER
Lutron	DVA DVELV
Lutron	LGCL-153P
Lutron	S-600P
Lutron	DVCL-253P
Lutron	DV-600P
Lutron	SCL-153P
Lutron	SELV-300P
Lutron	IPL06
Lutron	6673-P

**ACCESSORIES:**

ORDER CODE	MODEL	DESCRIPTION	PRODUCT IMAGE
14099683	RR-XRING4	4" Trim Extender ID:4.8", OD: 6.7"	 <p>The diagram shows a circular ring with two horizontal dimension lines. The top line is labeled 'Inner Diameter (ID)' and the bottom line is labeled 'Outer Diameter (OD)'. The ring is shaded in a light gray color.</p>
14099684	RR-XRING6	6" Trim Extender ID:6.24", OD: 8.75"	
14099685	RR-XRING8	8" Trim Extender ID:7.84", OD: 10.40"	
14099686	RR-XRING9	9" Trim Extender ID:9.50", OD: 11.90"	