

TYPE-C BBU



PRODUCT DESCRIPTION:

Optimized for use with MaxLite UL Type-C Linear T8 tubes, the LED emergency driver with battery backup assures 90 minutes of light output in the absence of power. UL listed and suitable for retrofit installations, the emergency driver wires between the driver supplied in the MaxLite retrofit kit and the LED tube to enable reliable lighting during emergencies. The external rechargeable lithium battery protects against overcharging, over-discharging and short circuit for long-term, reliable performance.



FEATURES:

- External lithium battery
- Battery protections: over charge protection; over discharge protection, short circuit protection

WARRANTY:

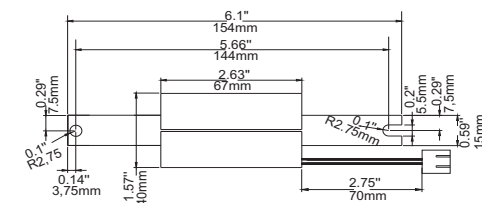
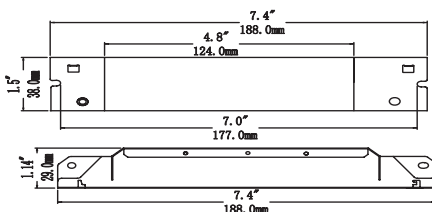
1-year standard warranty (further details available at www.maxlite.com/warranties)

***The emergency packs can be used with most LED tube lamps that have a forward voltage requirement between 120-277VAC**

SPECIFICATIONS

		T8C-BBU
ITEM	SPECIFICATION	DETAILS
GENERAL PERFORMANCE	Input voltage	100-277Vac., 50/60Hz
	Input current	100mA Max
	Output power	4W
	Output current	160-320mA
	Output voltage	25-48Vdc
ELECTRICAL	Battery type	Li-ion battery-7.4V/2500mAH
	Battery Charging Current	250mA
	Recharge time	≥ 24hrs
	Emergency time	≥ 1.5H
QUALIFICATION	Working Temperature	0 to +40°C (32°F to 104°F)
	Dimensions	7.4" x 1.5" x 1.1"
	Warranty	1 year warranty

DIMENSIONS



WIRING DIAGRAM

