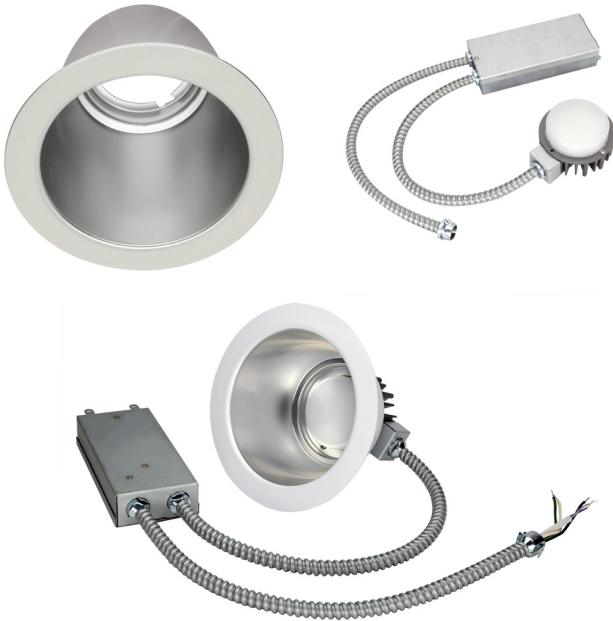


**LED 50W COMMERCIAL RECESSED
RETROFIT DOWNLIGHT**
RRC SERIES



PRODUCT DESCRIPTION:

The RRC family of LED Downlight retrofits is a highly efficient option for upgrading existing Incandescent, Fluorescent and Metal Halide downlight fixtures to energy saving LED. The highly efficient design allows users to capture energy savings while also gaining the benefit of dimming. Compatible with many architectural and commercial downlight housings this retrofit can be used in most downlight applications. Suitable for damp locations.

FEATURES:

- Mounts into existing recessed frame
- Supplied with optional retaining clips if existing frame does not have adequate friction springs to secure reflector.
- cULus listed for damp location use
- Universal voltage (120-277)
- 0-10V dimming
- CRI: >80
- A wide variety of CCTs available
- 10 year warranty

CONSTRUCTION:

- Anodized aluminum reflector with a white trim ordered separately
- External driver for easy retrofit and maintenance

WARRANTY:

10-year standard warranty with labor allowance* (further details available at www.maxlite.com/warranties)
*Warranty Limitations: Product must be rated for the application per the Product Data Sheet (PDS); operated ≤16 hrs; in ambient of -29°F to 104°F.

*Up to \$25/unit; labor allowances of up to \$500/unit available for purchase – contact MaxLite representative for details.

HOW TO ORDER:

1. Choose the light engine for desired CCT and dimming requirements.
2. Ensure that the light engines you have selected is compatible with the reflector size required by your project.

MODEL SELECTION (Full list of order codes on pg. 2)		Typical order example: RRXC50U30Z + RRC8-RFL		
FAMILY	LUMENS (NOMINAL)	VOLTAGE	CCT**	DIMMING TYPE
RRXC= Commercial Recessed Retrofit Downlight	50= 5000 lm @48W	U= Universal (120-277V)	30= 3000K 35= 3500K 40= 4000K	Z = 0-10V Dimming

*Additional wattages available. Please contact your MaxLite representative for more information on the entire RRC Series.
** 2700K and 5000K only made to order

SPECIFICATIONS:

		ENGINE	RRXC50U40Z	RRXC50U40Z
		REFLECTOR	RRC8-RFL	RRC9-RFL
ITEM	SPECIFICATION	DETAILS		
GENERAL PERFORMANCE	Power Consumption (W)	44.6 W		44.6 W
	Lumens Delivered (lm)	4,575 lm		4,625 lm
	Efficacy (lm/W)	103 lm/W		104 lm/W
	Color Temperature	3000K, 4000K, 5000K		
	L70 Lifetime (hours)	50,000		
	Color Consistency	Proprietary binning for uniform color, SDCM <4		
	CRI	>80		
ELECTRICAL	Power Factor	≥0.9		
	Input Voltage	120-277V		
	Compatible Dimmers	Compatible with 0-10V dimmers.		
PHYSICAL	Weight	2 lbs		
	Mounting	Mounts into existing recessed frame		
	Operating Temperature	0° – 104° F		
	Humidity	20% - 85% RH, non-condensing		
CERTIFICATION	Certification	cULs Classified, FCC, TAA Compliant		
	Material Usage	RoHS compliant; no mercury		
	Environment	Indoor Damp		
	Warranty	10 year warranty*		

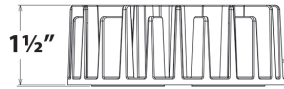
* CAUTION: A light engine should only be used with a reflector that is listed as compatible. Any other engine/reflector pairing is not covered by this product's UL Listing, and could be hazardous!

* Calculated data for 4000K light engines

ENGINE ORDERING:

ORDER CODE	MODEL	CCT	DIMMING
100372	RRXC50U35Z	3000K	0-10V
1410082	RRXC50U30Z	3500K	
1410085	RRXC50U40Z	4000K	
1410088	RRXC50U50Z	5000K	

REFLECTOR ORDERING:



Heatsink adds 1 1/2" to overall height

ORDER CODE	REFLECTOR MODEL NUMBER	REFLECTOR SIZE	
1410092	RRC8-RFL	8"	
1410093	RRC9-RFL	9"	

ORDER CODE	MODEL	DESCRIPTION	PRODUCT IMAGE
14099685	RR-XRING8	8" Trim Extender ID:7.84", OD: 10.40"	
14099686	RR-XRING9	9" Trim Extender ID:9.50", OD: 11.90"	
14098874	RCF-4	4" Commercial Recessed Frame	
14098875	RCF-6	6" Commercial Recessed Frame	
14098876	RCF-8	8" Commercial Recessed Frame	