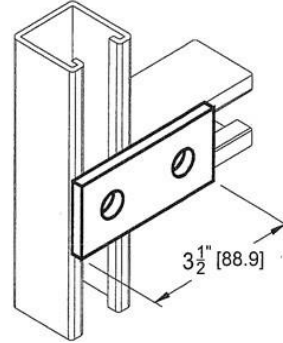




Morris CAT#: 17622
2 Hole Splice Plate



Features:

- 2 hole Splice Plates have Zinc Electro-Plate Finish
- 1-5/8" wide x 1/4" thick
- Holes are 9/16" diameter
- 13/16" center to edge

| <i>CAT. NO.</i> | <i>BOX QTY</i> |
|---------------------|--------------------|
|---------------------|--------------------|

17622

50