

# INSTALLATION AND MAINTENANCE



Model: WSC1210-T 15-15P 6FT  
Outdoor Rated Surface Mount Heater w/ 6Ft Cord



**DANGER**

**ELECTRIC SHOCK OR FIRE HAZARD**

READ ALL VOLTAGE REQUIREMENTS AND SAFETY DATA TO AVOID PROPERTY DAMAGE AND PERSONAL INJURY



## WARNING

**Read Carefully** - These instructions are written in an effort to prevent potential difficulties that might arise during installation. Studying the instructions first may save you considerable time and money later. Observing the following procedures will keep installation time to a minimum.

## IMPORTANT INSTRUCTIONS

When using electrical heating appliances, basic precautions should always be followed to reduce the risk of fire, electric shock and injury to persons, including the following:

1. **Read all instructions before wiring or using this heater.**
2. **WARNING:** This heater is hot when in use. To avoid burns, do not let bare skin touch hot surfaces. Keep combustible materials, such as furniture, pillows, bedding, papers, clothes, boxes, etc., and curtains at least 3ft (.9 m) from the front of the heater and keep them away from the sides and rear.
3. **CAUTION:** Extreme caution is necessary when any heater is used by or near children or invalids and whenever the heater is left operating and unattended.
4. Do not operate any heater after it malfunctions. Disconnect power at service panel and have heater inspected by qualified electrician for repair before reusing.
5. Always plug heaters directly into a wall outlet/receptacle. Never use with an extension cord or re-locatable power tap (outlet/power strip). Extension cords can melt and cause a fire.
6. Connect to properly grounded outlets only. Check outlet for heat with indicates replacement is needed.
7. Do not operate any heater with a damaged cord or plug or after the heater malfunctions, has been dropped or damaged in any manner. Discard heater or return to an authorized service facility for examination, and/or repair
8. Do not run cord under carpeting. Do not cover cord with throw rugs or similar coverings. Do not route cord under furniture or appliances. Arrange cord away from traffic area and where it will not be tripped over. Never coil cord up when operating, doing this generates enough heat to melt the cord.
9. Always unplug heater when not in use.
10. To disconnect heater, turn controls to off, then remove plug from outlet.
11. A heater has hot and arching or sparking parts inside. Do not use it in areas where gasoline, paint, or flammable liquids are used or stored. Keep out of areas of wood flour or high dust. Blow out element yearly.
12. **WARNING:** Do not insert or allow foreign objects to enter any ventilation or exhaust opening as this may cause an electric shock, fire, or damage to the heater.
13. To prevent a possible of fire, do not block air intakes or exhaust in any manner.
14. A heater has hot and arching or sparking parts inside. Do not use it in areas where gasoline, paint, or flammable vapors or liquids are used or stored.
15. **WARNING:** Use this heater only as described in this manual. Any other use is not recommended by the manufacturer and may cause fire, electric shock, explosion or injury to people and or property.

## SELECTING HEATER LOCATION

DO NOT install less than 6" (15cm) from vertical side walls or open edge of door. This heater must have an unrestricted airflow. DO NOT select a location where it is likely to be blocked by furniture, curtains, etc. Be sure the location selected allows sufficient space for the heater as shown by Table 1. DO NOT locate this heater in an area where combustible vapors, gases liquids, or excessive lint, dust or moisture is present.

Minimum Clearances for heater: Table 1

Front	TOP	BOTTOM	SIDES
36 in	12 in	4 in	6 in
0.9 m	30.5 cm	10.2 cm	15.2 cm

Zero clearance to insulation.

# WSC INSTALLATION INSTRUCTIONS



## Rating Label Location

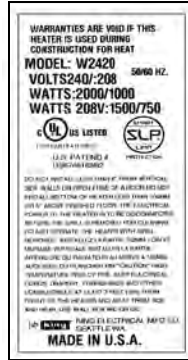


Figure 3

## INSTALLATION STEPS

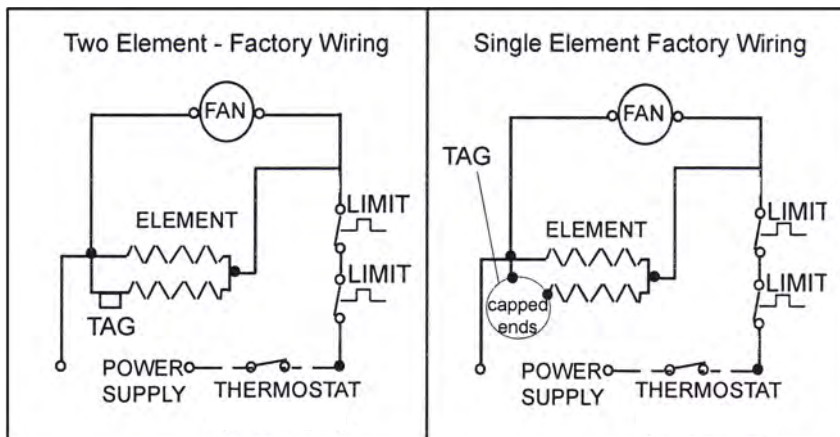
1. Connect heater only to the voltage, amperage and frequency specified on the nameplate.
2. Set the bag containing the grill and packet with two (2) grill screws aside.
3. Loosen mounting screw and remove fan heater assembly.
4. Install wallbox a minimum of 6" from vertical sidewalls and 4" above floor.
5. Secure wallbox to the 2 x 4 studs of the wall.
6. Reinstall heater assembly into wallbox with screw at top of interior.
7. Install grill securely with screws provided in packet. Do not over tighten.
8. Plug heater into a good quality grounded outlet and turn thermostat up until it clicks which indicates it is heating.
9. Feel plug and receptacle after 15 to 30 minutes of operation and continue to monitor for any hot to the touch overheating. If cord gets hot at plug end have a qualified Electrician change the receptacle to a higher quality stronger plug clamping force

receptacle. Discontinue use until proper receptacle is installed if hot or warm to the touch.

10. Make sure the circuit is rated for the added load of this heater.
11. Never add two of any type electric heaters to one receptacle or circuit.
12. Do not coil the cord up when running heater, lay cord out flat and do not cover cord with anything including throw rugs. Covering or coiling the cord increases the heat of the cord and will melt the cord and possibly start a fire.
13. Thermostat is mounted in the junction box of this heater and can be adjusted to a comfort level. Temperature range is from 40F to 90F.
14. Test unit by turning thermostat up past room temperature. You will see a puff of smoke as the elements are energized and the fan turns on. This is a normal burn off of manufacturing lubricants and will dissipate in 5 minutes.
15. Heater will continue to run until the room temperature you set is reached and then turn itself off until the temperature drops again.

## Wiring Diagram

Figure 4



**CAUTION - High temperature. Risk of fire.** keep electrical cords, drapery, furnishings, and other combustibles at least 3 feet (0.9 m) from the front of the heater as well as away from the side and rear. To reduce the risk of fire, do not store or use gasoline or other flammable vapors and liquids in the vicinity of the heater.

# OPERATING INSTRUCTIONS



This heater is equipped with a thermal overload Smart Limit Protection which disconnects elements and motor in the event normal operating temperatures are exceeded. If thermal overload trips due to abnormal operating temperatures, thermal overload shall remain open until manually reset by turning the heater OFF for fifteen minutes. Inspect for any objects on or adjacent to the heater that may cause high temperatures. After inspecting the heater, keep the power to the heater off for 10 minutes to reset the SLP thermal protector. If the SLP thermal protector shuts the heater off again, immediately turn the heater OFF at the circuit breaker and inspect the heater for possible fan motor failure or dirt and lint on the heating element. Repeat the starting procedure.

**DO NOT TAMPER OR REMOVE THIS THIS DEVICE.**

## General information and Guidelines:

This heater must be properly installed before it is used. DO NOT tamper with or change the operating of this heater. All service should be preformed by a authorized service representative. Only replace components with King approved replacement parts.



## WARNING

Clean Heater annually. Turn off and wait for heater to cool before removing grill. Use only a soft brush or vacuum on blow to clean heater. Re-attach grill before re-applying power.

## Operation:

1. This heater must be properly installed in accordance with the National Electrical Codes (NEC) & local electrical codes before it is used.
2. After the electric heater has been completely installed, all thermostats should be turned to LOW or NO HEAT. Turn ON breakers, wait 3 to 5 minutes and check to see that the heaters are not operating. If operating, disconnect power and check for improper wiring. If none are operating then turn thermostats to highest position and wait 3 to 5 minutes. Check to see that all heaters are operating. Should any not be operating, disconnect power and check wiring.
3. Allow entire system to operate steadily for 1/2 hour. This should remove oily residue from manufacturing. (Some smoking may occur).
4. Select the setting for comfort on all thermostats.
5. A safety limit control is provided to turn off the heater automatically if it is blocked or otherwise overheats due to an abnormal condition. **DO NOT** bypass or remove this safety device from the electrical circuit-see Warning Figure 4 on page 2. During normal use, this safety control should not operate. If you find that this control is operating, make sure the heater is not being blocked. If it continues to cycle the heater off, disconnect power to heater and have it checked and repaired by a qualified electrician.

# TROUBLESHOOTING GUIDE

SYMPTOM	PROBLEM	SOLUTION
Breaker Trips	<ol style="list-style-type: none"> <li>1. Short Circuit</li> <li>2. Overloaded Circuit</li> <li>3. Improper Voltage</li> </ol>	<ol style="list-style-type: none"> <li>1. Find source of short. Trace heater circuit and verify the heater is wire properly.</li> <li>2. Reduce wattage in circuit. Refer to circuit sizing table for maximum wattage.</li> <li>3. Verify the heater voltage matches the supply voltage.</li> </ol>
Heater not working	<ol style="list-style-type: none"> <li>1. No Power</li> <li>2. Loose Connections</li> <li>3. Defective Limit</li> </ol>	<ol style="list-style-type: none"> <li>1. Turn Breaker ON, turn thermostat ON, check that the breaker is position properly on panel bus-bar. A 2-Pole breaker must be connected to both bus-bars (A&amp;B phase) to produce 240V power.</li> <li>2. Tighten wire connections.</li> <li>3. By-pass the limit to test. If heater works, replace the limit.</li> </ol>
Heater Smokes	<ol style="list-style-type: none"> <li>1. Oil on Element</li> <li>2. Needs Cleaning</li> </ol>	<ol style="list-style-type: none"> <li>1. It is normal for the element to burn off some light finishing oil used in the manufacturing process when first energized. Open windows and allow room to vent until it stops, usually within a few minutes.</li> <li>2. Remove any dust or dirt accumulations.</li> </ol>
Room Temperature does not match thermostat setting	<ol style="list-style-type: none"> <li>1. Thermostat affected by another heat source.</li> <li>2. Improper calibration</li> </ol>	<ol style="list-style-type: none"> <li>1. Sunlight or other heat sources can affect the thermostat. Move the thermostat to another location or remove the heat source.</li> <li>2. Remove cover and adjust calibration screw.</li> </ol>
Room Temperature swings from too hot to too cold	<ol style="list-style-type: none"> <li>1. Defective or low quality thermostat</li> </ol>	<ol style="list-style-type: none"> <li>1. Replace with a better quality thermostat. Anticipated thermostats are fairly accurate; an electronic thermostat is best.</li> </ol>

# Maintenance & Cleaning

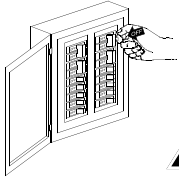


Figure 2

Basic maintenance is listed below and should be performed annually. When necessary, any required servicing should be performed by qualified service personnel. Your heater will give you years of service and comfort with only minimum care. To assure efficient operation follow the simple instructions below.

**⚠ DANGER:** Unplug unit from wall or Turn the electrical power OFF at the electrical panel board (circuit breaker or fuse box) and lock or tag this panel board door to prevent someone from turning on power while you are working on this heater. Failure to do so could result in serious electrical shock, burns, or possible death.

1. Before removing grill, turn the electrical power OFF and elements to cool. Circuit breakers are often not marked correctly and turning the wrong breaker off could mean electricity is flowing to the heater, even if the heater does not appear to be working. If you are uncomfortable working with electrical appliances, unable to follow these guidelines, or do not have the necessary equipment, consult a qualified electrician. Once you verify the power is off completely and element is cool, proceed to the next step.
2. Remove screws and take off grill. Wash grill with hot soapy water and dry immediately
3. Using a hair dryer or vacuum on blow cycle, blow debris back through the element. Do not touch element. Vacuum or use a soft brush and remove loose debris without touching the elements. The fan motor does not require lubrication.
4. Re-attach grill and secure with screws.
5. Turn thermostat to desired setting.
6. Turn power back ON at the electrical panel board.

**⚠ WARNING:** All other servicing should be performed by an authorized service personnel.

## DO NOT RETURN PRODUCT

Are you experiencing difficulties?

## We're Here to Help!

Call Us Toll Free at:

# 1-800-603-5464

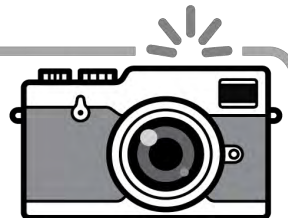
*(Select Option 2 from the Menu)*

7:00 am - 3:30 pm PST Mon-Fri

Or email us at [tech@king-electric.com](mailto:tech@king-electric.com)

## SHARE A PHOTO of your King Install!

Love how your application turned out?  
Every install is unique, and we'd love to  
share with others.



**Scan QR Code Now  
or Visit [king-electric.com/share](http://king-electric.com/share)**