

INSTALLATION AND MAINTENANCE



CT-9004

Designed to be placed on the pipe under the insulation and padding

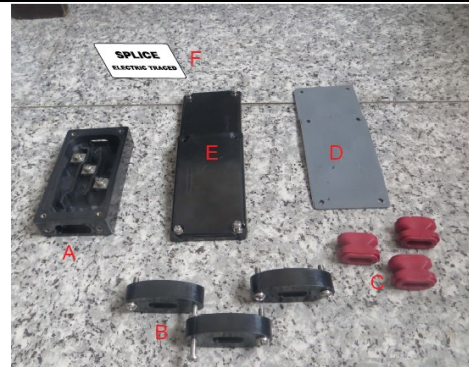


	DANGER	
ELECTRIC SHOCK OR FIRE HAZARD		
<small>READ ALL WIRE SIZING, VOLTAGE REQUIREMENTS AND SAFETY DATA TO AVOID PROPERTY DAMAGE AND PERSONAL INJURY</small>		

LOW PROFILE TEE CONNECTION KIT

Item	Qty	Description
A	1	Main Box
B	3	Pressure Seal End
C	3	(color) Grommets
D	2	Gaskets for Main Box
E	2	Cover for Main Box
F	1	Label

RATING	NEMA TYPE 4X	
CERTIFICATION		Class I, Div. 2, Groups A, B, C, D ^[2]
		Class II, Div. 2, Groups E, F, G ^[2]
		Class III ^[2]



⚠️ WARNING ⚠️

- If after carefully reading these instructions you still have questions regarding installation or operation of this product, call King Electrical Manufacturing Co. at 206-762-0400 or visit us at www.king-electric.com for assistance.
- This component is an electrical device which must be installed correctly to ensure proper operation and to prevent shock or fire. Read these important warnings and carefully follow all of the installation instructions.
- To minimize the danger of fire from sustained electrical arcing if the heating cable is damaged or improperly installed, and to comply with the requirements of King Electrical, certifications, and National Electrical Codes, ground-fault equipment protection must be used. Arcing may not be stopped by conventional circuit breakers.
- Component approvals and performance are based on the use of King Electrical. specified parts only. Do not use substitute parts or vinyl electrical tape.
- The black heating cable core is conductive and can short. It must be properly insulated and kept dry.
- Damaged bus wires can overheat or short. Do not break bus wire strands when scoring the jacket or core.
- Keep components and heating cable ends dry before and during installation
- Bus wires will short if they contact each other.
- Keep bus wires separated.
- Use only fire-resistant insulation materials, such as fiberglass wrap or flame-retardant foam.

INSTALLATION INSTRUCTIONS

CT-9003 Installation Instructions

1

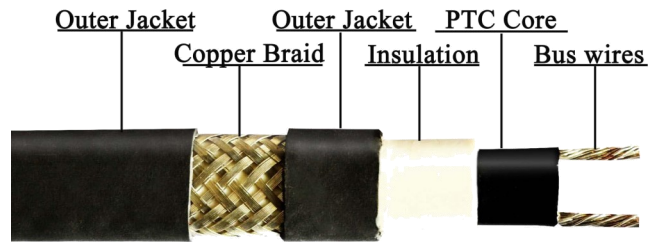
- Identify heating cable type.
- Select correct grommet from table below.

Heating Cable	Type	Grommet
SR	--CT	RED

* Order separately



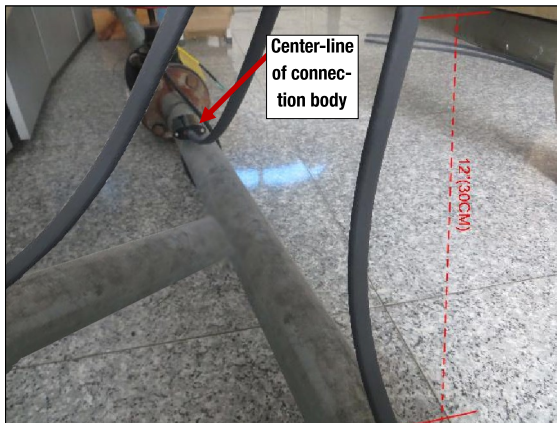
WARNING: Use of the wrong grommet can result in leaks, cracked components, shock or dielectric failure, and will invalidate approvals and certifications.



Structure of Model HTR-CR

2

- Allow extra heating cable as shown.

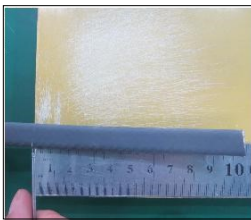


3

- First insert the Pressure Seal End and then the Grommet onto each cable.



4



Do NOT cut the braid.

- Lightly score outer jacket.
- Bend heating cable to break jacket at score, then peel off jacket.



5

- Push braid back to create a pucker.
- At pucker use a screwdriver to open braid
- Bend heating cable and work it through opening braid

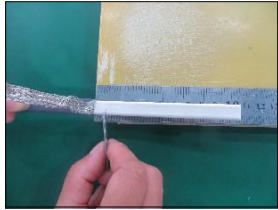


INSTALLATION INSTRUCTIONS

CT-9003 Installation Instructions

6

Do NOT cut bus wires



- Lightly score inner jacket.
- Peel off jacket.



7

- Pull braid tightly to make a pigtail



8

- Notch core.
- Twist back and peel bus wire from core.

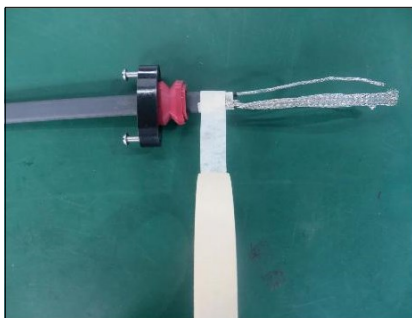


9

- Score between bus wires and inner jacket.
- Bend and snap core.
- Peel core free from bus wire.
- Clean bus wires.



10 For CSA Class 1; Division 2 application only



- Using glass cloth tape, hold the braid pigtail against the inner jacket, and wrap 3 times around the heating cable and braid.
- Separate the braid from the heating cable and wrap 2 wraps of tape around the braid
- Slide the grommet to the edge of the tape. Do not push grommet onto or over the tape, leaks and dielectric failure may result.

INSTALLATION INSTRUCTIONS

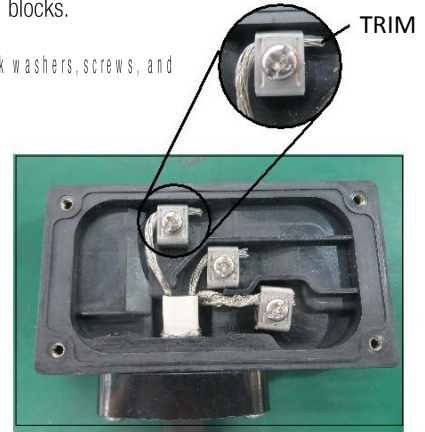
11

- Push heating cable into the body.
- Slide grommets into cavities and seat
- Tighten pressure plate screws to body



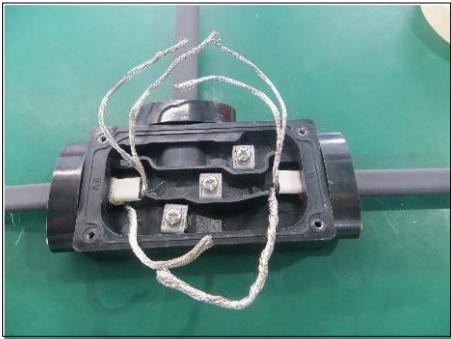
12

- Remove screws, lock washers and clamps.
- Position wires on blocks.
- Refit clamps, lock washers, screws, and tighten.
- Trim all extra lengths of wire and any loose braid wires



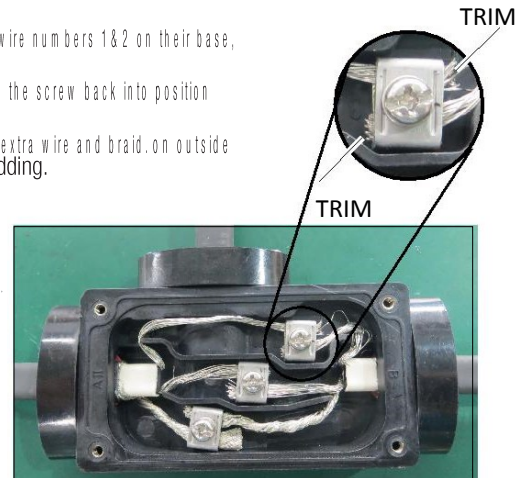
13

- Install the wires number 1 & 2 in the main box.
- Install the grommet into the hole of the main box
- Push pressure seal end and then tighten screws back into main box



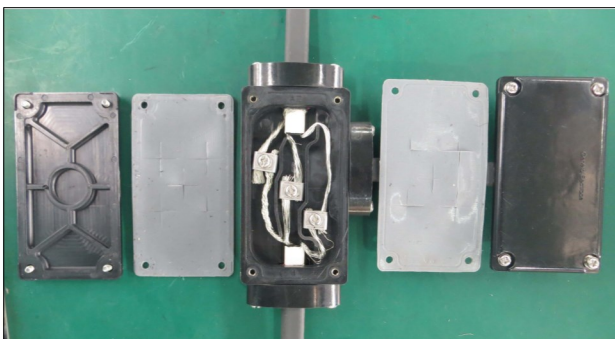
14

- Loosen the screws number 1 & 2.
- Install wire numbers 1&2 on their base,
- Tighten the screw back into position
- Cut all extra wire and braid on outside of cladding.



15

- Install the 2 gaskets and the 2 covers onto the main box. Tighten the screw back into position.



14

- Fix the Low Profile Tee Connection and side wires to the pipe using tape.
- Fix insulation
- Install label on the insulator protector
- Save instructions

