

WIRING ADAPTER FOR USE WITH FIRST ALERT® AND BRK® WIRING HARNESS

User Guide

**IMPORTANT! READ ALL INSTRUCTIONS BEFORE INSTALLATION
AND KEEP THIS GUIDE FOR FUTURE REFERENCE.**

Read and become familiar with the user guide and all other literature supplied with each alarm in your home.

▲ WARNING! If the power harness currently wired into the structure does not match the photo in **FIGURE 1**, this is not the correct wiring adapter for your application. **This Connector Must Have An Orange Interconnect Wire.**

THIS ADAPTER CAN ONLY BE USED WHEN REPLACING FIRST ALERT® AND BRK® MODELS; SA4121B, 4120, 4919, 5919, AND 86RAC WITH PLUG-IN CONNECTOR, MANUFACTURED BEFORE JUNE 1, 2003. THESE MODELS HAVE BEEN TESTED FOR INTERCONNECT COMPATIBILITY WITH THE KIDDE ALARM MODELS: 1235, 1275, 1276, 1285, i12020, i12020A, i12040, i12040A, i12060, i12060A, i12080, i12080A, i4618, i4618A, i4618AC, KN-SMFM-I, RF-SM-ACDC, PE120, P12040, Pi2000, Pi2010, KN-COSM-I, KN-COSM-IB, KN-COSM-IBA, KN-COPE-I, KN-COPE-IC, i12010S, i12010SCO, P4010ACSCO, P4010ACSCO-W, P4010LACS-W, P4010ACS, P4010ACS-W.

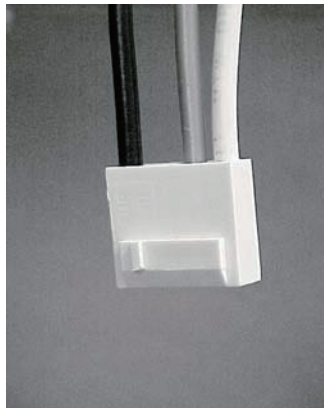


FIGURE 1

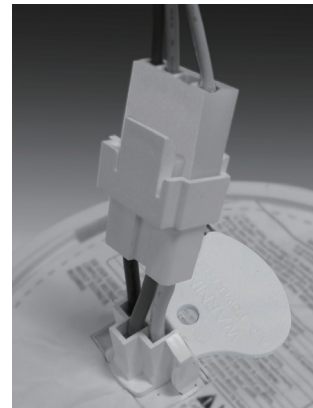


FIGURE 2

This smoke alarm adapter allows the installation of new Kidde alarm to existing First Alert® and BRK® wiring harnesses. When using this adapter, the power harness supplied with your new Kidde alarm is not used. You will need to remove the existing First Alert® or BRK® mounting plate and install the mounting plate supplied with your new Kidde alarm. Connect the KA-B2 adapter to the First Alert® or BRK® wiring harness. To install the adapter, pinch the tabs on the side and insert into the opening of your Kidde unit (FIGURE 2). Secure the Kidde alarm to the mounting plate.

After installation, be sure that the AC power indicator is operating and test all your alarms following the instructions supplied by the alarm manufacturer for your specific alarm model. If the alarms are interconnected push the test button on each alarm and verify that all the interconnected alarms sound when any alarm is activated. The interconnect system should not exceed the NFPA interconnect limit of 12 smoke alarms.

FIVE YEAR LIMITED WARRANTY

KIDDE Safety warrants the original purchaser that the enclosed smoke alarm adapter will be free of defects in material and workmanship or design under normal use and service for a period of five years from the date of purchase. The obligation of KIDDE Safety under this warranty is limited to repairing or replacing the smoke alarm adapter which we find to be defective in material, workmanship or design, free of charge to the customer, upon sending the smoke alarm adapter with proof of date of purchase, postage and return postage prepaid to: Warranty Service Department, Kidde Safety, 1394 South Third St, Mebane, NC 27302.

THE LIABILITY OF KIDDE SAFETY OR ANY OF ITS PARENT OR SUBSIDIARY CORPORATIONS ARISING FROM THE SALE OF THIS SMOKE ALARM ADAPTER OR UNDER THE TERMS OF THIS LIMITED WARRANTY SHALL NOT IN ANY CASE EXCEED THE COST OF REPLACEMENT OF THE SMOKE ALARM ADAPTER AND IN NO CASE SHALL KIDDE SAFETY OR ANY OF ITS PARENT OR SUBSIDIARY COPORATIONS BE LIABLE FOR CONSEQUENTIAL LOSS OR DAMAGE RESULTING FROM THE FAILURE OF THE SMOKE ALARM ADAPTER OR THE BREACH OR THIS OR ANY OTHER WARRANTY, EXPRESSED OR IMPLIED, EVEN IF THE LOSS IS CAUSED BY THE COMPANIES NEGLIGENCE OR FAULT.

Since some states do now allow limitations on the duration of an implied warranty or do not allow the exclusion of limitations or incidental or consequential damages, the above limitation or exclusions may not apply to you. While this warranty gives you specific legal rights, you may also have other rights, which vary, from state to state. The above warranty may not be altered except in writing signed by both parties hereto.

Since some states do now allow limitations on the duration of an implied warranty or do not allow the exclusion of limitations or incidental or consequential damages, the above limitation or exclusions may not apply to you. While this warranty gives you specific legal rights, you may also have other rights, which vary, from state to state.

The above warranty may not be altered except in writing signed by both parties hereto.



QUESTIONS OR FOR MORE INFORMATION

Call our Consumer Hotline at

1-800-880-6788

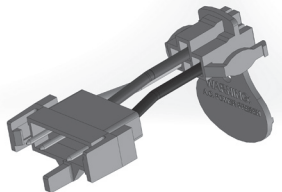
Or contact us at our web site www.kidde.com

Made in China

FIRST ALERT® is a registered trademark of First Alert Trust.

BRK® is a registered trademark BRK Brands Inc.

1275-7246-00



WIRING ADAPTER FOR USE WITH FIREX® WIRING HARNESS

User Guide

The Kidde and Firex alarm models listed in this user guide have been tested to be interconnect compatible. That compatibility exists with or without the use of the wiring harness adapters.

IMPORTANT! READ ALL INSTRUCTIONS BEFORE INSTALLATION AND KEEP THIS USER GUIDE FOR FUTURE REFERENCE.

Read and become familiar with the user guide and all other literature supplied with each alarm in your home.

▲ Warning! If the power harness currently wired into the structure does not match the photo in FIGURE 1, this is not the correct wiring adapter for your application.

THIS ADAPTER CAN ONLY BE USED WHEN REPLACING FIREX® MODELS; FADC, ADC, AND AD. THESE MODELS HAVE BEEN TESTED FOR INTERCONNECT COMPATIBILITY WITH THE KIDDE ALARM MODELS: 1235, 1275, 1276, 1285, i12020, i12020A, i12040, i12060, i12060A, i12080, i4618, i4618A, i4618AC, KN-SMFM-I, PE120, Pi2000, KN-COSM-I, KN-COSM-IB, KN-COSM-IBA, KN-COPE-I, i12010S, i12010SCO, P4010ACSCO, P4010ACSCO-W, P4010LACS-W, P4010ACS, P4010ACS-W.

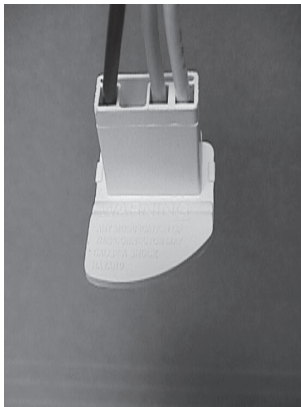


FIGURE 1

This smoke alarm adapter allows the installation of new Kidde alarm to existing Firex® wiring harnesses. When using this adapter, the power harness supplied with your new Kidde alarm is not used. You will need to remove the existing Firex® mounting plate and install the mounting plate supplied with your new Kidde alarm. Connect the KA-F2 adapter to the Firex® wiring harness then attach your Kidde alarm to the adapter (FIGURE 2). Secure the Kidde alarm to the mounting plate.

After installation, be sure that the AC power indicator is operating and test all your alarms following the instructions supplied by the alarm manufacturer for your specific alarm model. If the alarms are interconnected push the test button on each alarm and verify that all the interconnected alarms sound when any alarm is activated. The interconnect system should not exceed the NFPA interconnect limit of 12 smoke alarms.

Each alarm shall be installed and tested in accordance with its user guide.

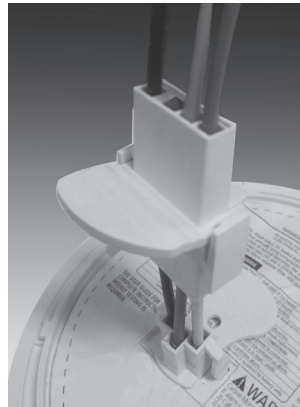


FIGURE 2

FIVE YEAR LIMITED WARRANTY

KIDDE Safety warrants the original purchaser that the enclosed smoke alarm adapter will be free of defects in material and workmanship or design under normal use and service for a period of five years from the date of purchase. The obligation of KIDDE Safety under this warranty is limited to repairing or replacing the smoke alarm adapter which we find to be defective in material, workmanship or design, free of charge to the customer, upon sending the smoke alarm adapter with proof of date of purchase, postage and return postage prepaid to: Warranty Service Department, Kidde Safety, 1394 South Third St, Mebane, NC 27302.

THE LIABILITY OF KIDDE SAFETY OR ANY OF ITS PARENT OR SUBSIDIARY CORPORATIONS ARISING FROM THE SALE OF THIS SMOKE ALARM ADAPTER OR UNDER THE TERMS OF THIS LIMITED WARRANTY SHALL NOT IN ANY CASE EXCEED THE COST OF REPLACEMENT OF THE SMOKE ALARM ADAPTER AND IN NO CASE SHALL KIDDE SAFETY OR ANY OF ITS PARENT OR SUBSIDIARY COPORATIONS BE LIABLE FOR CONSEQUENTIAL LOSS OR DAMAGE RESULTING FROM THE FAILURE OF THE SMOKE ALARM ADAPTER OR THE BREACH OR THIS OR ANY OTHER WARRANTY, EXPRESSED OR IMPLIED, EVEN IF THE LOSS IS CAUSED BY THE COMPANIES NEGLIGENCE OR FAULT.

Since some states do now allow limitations on the duration of an implied warranty or do not allow the exclusion of limitations or incidental or consequential damages, the above limitation or exclusions may not apply to you. While this warranty gives you specific legal rights, you may also have other rights, which vary, from state to state. The above warranty may not be altered except in writing signed by both parties hereto.

Since some states do now allow limitations on the duration of an implied warranty or do not allow the exclusion of limitations or incidental or consequential damages, the above limitation or exclusions may not apply to you. While this warranty gives you specific legal rights, you may also have other rights, which vary, from state to state.

The above warranty may not be altered except in writing signed by both parties hereto.



QUESTIONS OR FOR MORE INFORMATION

Call our Consumer Hotline at
1-800-880-6788

Or contact us at our web site www.kidde.com

FIREX® is a registered trademark of United Technologies Corporation
Made in China