

Euri  
Euri Lighting

# LED TORCHIERE LAMP

Model No. EIN-TL55BN-1020cec

Combining contemporary with classic style, this Euri Lighting decorative wall light features clean, Brushed Nickel housing and an acid-etched, ribbed glass bowl. Only 9 Watts and dimmable, this LED wall sconce light guarantees a long lifespan and unbeatable illumination in Warm White (2700K).



Brushed Nickel Bezel & Acid-Etched Glass Lens

**120W**  
REPLACEMENT

- 24W**  
24 Watts
- 2700K**  
Warm White
- Dimmable
- Damp Rated
- 90+ CRI**  
90+ CRI
- Energy Efficient
- Integrated LED Fixture

## Electrical Specifications

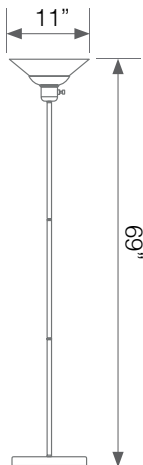
Model No.	Input Power	Input Voltage	Lumen Output	Beam Angle	Center Beam	CCT
EIN-TL55BN-1020cec	24 W	120 V	2200 lm	180°	N/A	2700 K

CRI	Luminous Efficacy	Power Factor	Input Current	Material	Lamp Lifespan	Estimated Yearly Cost
90	91 lm/W	0.9	0.2 A	E26	25,000 Hrs.	\$ 3.25

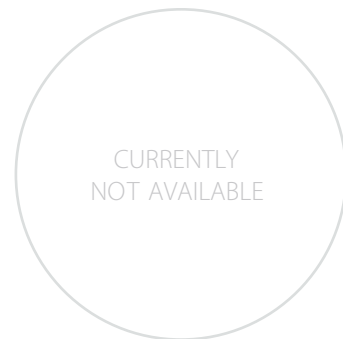
## Mechanical Specifications

Rating	Operational Temperature	Inner Box QTY.	Master Box QTY.	Dimensions(in.)	UPC Code
Damp Rated	-4°F - 104°F	N/A	N/A	11"(Ø) x 69"(H)	N/A

## Product Dimensions



## Product Photometric Data



Euri Lighting | A Division of IRTRONIX Inc.

20900 Normandie Avenue Suite B Torrance, CA 90502 | Tel: 888.743.5766 | Fax: 310.787.1166 | www.eurilighting.com  
©2021 Euri Lighting. All Rights Reserved