

8" LOWPRO RECESSED DOWNLIGHT WITH COLOR PREFERENCE[®]

MODEL# 538292020 | 1,890 LUMENS | 23.5 W | 80 LPW | 5 CCT



8" LOWPRO RECESSED DOWNLIGHT WITH COLOR PREFERENCE[®]

SUPERIOR VALUE & PERFORMANCE



PRODUCT OVERVIEW

ETi SSL's 8 in. LowPro Recessed Downlight with Color Preference[®] is one of the most innovative and easiest ways to upgrade your existing recessed lights to energy-efficient LEDs. This innovative fixture offers unique features such as its ultra-slim design which allows for easy installation into low clearance or sloped ceiling without the need for recessed cans or a separate J-box. You can also choose between (5) color temperatures of light output for your space from warm to cool whites, bright white, and daylight. This versatile light will emit 1,890 Lumens of light while using only 23.5-Watts of electricity which will conserve energy and save money.

The fixture is dimmable down to 10% without any flickering or buzzing and is suitable for any wet locations. It is maintenance-free without the need to replace bulbs, and is IC Rated for direct contact with insulation. The 8" Downlight LowPro includes certifications to both ENERGY STAR[®] and the California Appliance Efficiency Database under JA8 that can be used to comply with California Title 24 Part 6 High Efficacy LED light source requirements. The Downlight LowPro (DLLP) family is an extremely multi-purpose product series designed for use in many retrofit, remodel or new construction applications.

Our entire team takes great pride in our dedication to providing innovative in-stock lighting solutions that typically ship in 2-3 days with the product reliability and quality that you can always depend on from ETi SSL.

STOCK ORDERING INFORMATION (typical 2-3 day shipment lead time)¹

Catalog Logic/PT#	Model #	UPC	Lumens	Wattage	LPW	CCT ²	CRI	Voltage	Dimming	Energy Star ³
DLLP-8IN-1800LM-9-5CP-SV-TD	538292020	849489066639	1,890 LM	23.5	80	5 CCT	90 (min)	120V	Triac Dimming	Yes

Notes:

1. Stock SKUs typically ship in 24-48 hours upon receipt of an approved released order.

2. Comes with 5 CCT Color Preference[®] settings: 2700K, 3000K, 3500K, 4000K, and 5000K. Factory setting at 2700K.

3. Search first 6-digits of the model # followed by '###' on the ENERGY STAR[®] or CEC JA8 website database to view certifications. (Ex. '538292###')

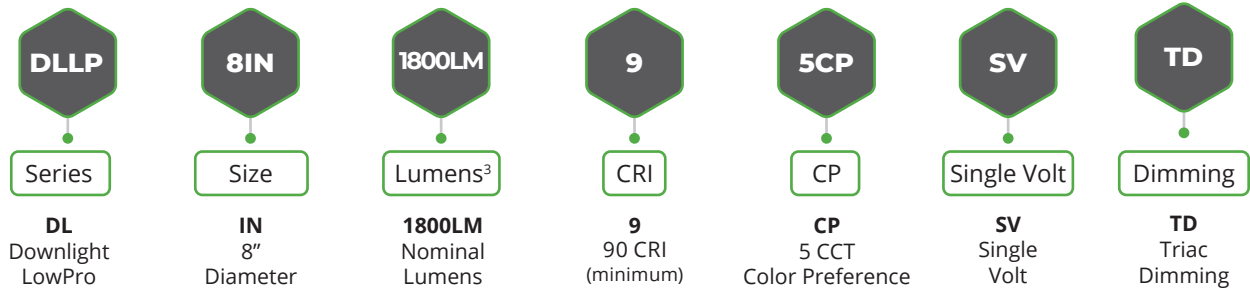
DLLP Series

8" LowPro Recessed Downlight with Color Preference®

Model# 538292020 | 1,890 Lumens | 23.5 W | 80 LPW | 5000K | ENERGY STAR® | 5-yr Warranty

CATALOG LOGIC | PART# DECODER^{1,2,3}

DLLP-8IN-1800LM-9-5CP-SV-TD (Model # 538292020)



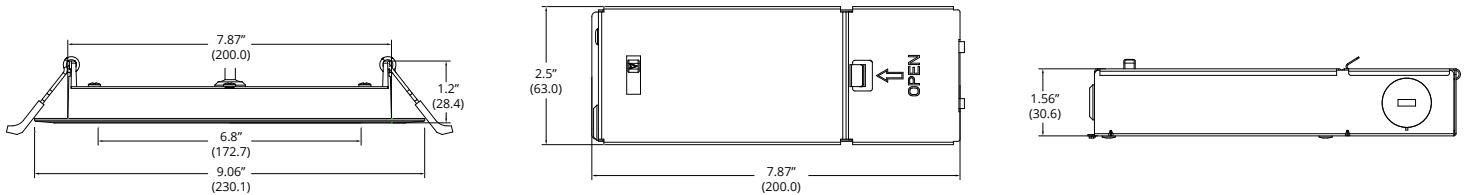
Notes:

1. This product is not configurable, only designated 'Stock' SKUs are available.

2. Decoder is to help clarify Catalog Logic|Part # configurations only (see Stock Ordering Information for available SKUs).

3. Lumen values shown are nominal (see Stock Ordering Information or Photometric Details sections for additional performance details).

KEY DIMENSIONAL INFORMATION



ADDITIONAL DIMENSIONAL DETAILS

Luminous Window: 6.8" dia. (172.7) Ceiling Opening: 8.25" dia. (209.5) Outer Trim: 9.06" dia. (230.1) Profile Height: 1.2" (28.4)

Note: All dimensions are in inches (millimeters). Max ceiling opening not to exceed 8.87" (225.3)

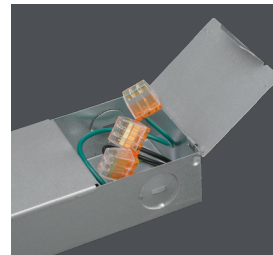
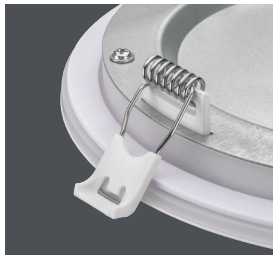
LOWPRO CEILING CLEARANCE - 1.3"

Needs only 1.3" Ceiling Clearance

No recessed can or separate J-box required

Remote Metal Driver & Wiring Box

5 CCT Selectable Switch on Wiring Box



ETI's Color Preference® allows you to adjust the lighting to your needs with five different choices seen above.

DLLP Series

8" LowPro Recessed Downlight with Color Preference®

Model# 538292020 | 1,890 Lumens | 23.5 W | 80 LPW | 5000K | ENERGY STAR® | 5-yr Warranty

AVAILABLE STOCK ACCESSORIES (must be ordered separately)



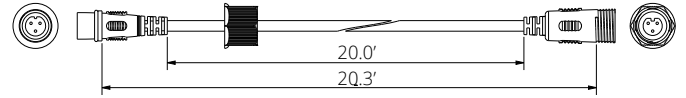
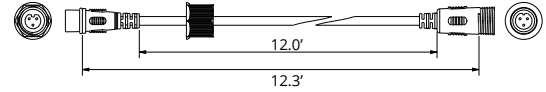
Emergency LED Driver/BBU

(BBU field installed w/OC sensor or dimming)

Catalog Logic/PT#	Model #	Description
EMA25FY-170 (G2)	70112202 ¹	25W, IP rated, 90 minutes
EMA25FY-170 (G3)	70112202-2 ¹	25W, IP rated, 90 minutes

Notes:

BBUs certified in CA Title 20 MAEDBS. (search bu BBU cat logic/PT#, Ex. 'EMA25FY-170)



IP65 Extension Cables (low voltage)

Catalog Logic/PT#	Model #
LP-12FT-EXTENCORD-IP65	906007760
LP-20FT-EXTENCORD-IP65	906007770

MISCELLANEOUS PRODUCT SPECS & DETAILS

Load Information

Power Factor	> 0.982
THD	< 41%
Frequency	60 Hz
Sound Rating	< 20 Dba
Low Temp Start	-25° C (-13° F)
Max Temp	40° C (104° F)
Unit Weight	2.4 lbs

Lumen Maintenance

Ambient Temperature	TM-21 Lumen Maintenance (60,000 hours)
25° C (77° F)	> 88.73%
Ambient Temperature	TM-21 Theoretical L70 (hours)
25° C (77° F)	176,000

Shipping Information*

Size	Unit Weight ¹	Pallet ²
8" Unit	2.4 lbs	84 units

1. Case pack weighs 24 lbs (10 units / per case pack).
2. There are 42 case packs per pallet.

PHOTOMETRIC DETAILS

Luminaire Data: DLLP-8IN-1800LM-9-5CP-SV-TD

IES File Name	538292020.IES
CCT & CRI	5000K, 90CRI minimum
Initial Delivered Lumens	1,890
Wattage	23.5W
Efficacy	80
Beam Angle	50° = 110° 10° = 160°
Spacing	0° = 1.26 90° = 1.26

Photometric values based on tests performed in compliance with LM-63 & LM-79

Indoor Candela Plot

