

DATE:	PROJECT:
TYPE:	NOTES:
CATALOG #:	

**FMDL Series**

SMD6 Surface Mount Disk Light with TwistFit Mounting System & Color Preference® options  
1,010 - 1,592 Lumens | 13.7 - 19.7W | 3000K or 3 CCT

**FEATURES & SPECIFICATIONS**

**Overview**

ETi SSL's SMD6 Surface Mount Disk Lights are an easy-to-install "down light" solution for any location in home or office. This disk light mounts quickly into an existing junction box using the included TwistFit mounting bracket. The TwistFit bracket installs in less than 2 minutes and ensures a tight seal that won't allow bugs or dust to enter. Additionally, the SMD6 does not need the lens removed to install. The SMD6 can also retrofit into many existing 5" and 6" cans with the Torsion Springs & E26 Adapter Accessory Kit (sold separately). This 7.5" diameter fixture duplicates the appearance of a traditional 6" recessed downlight.

**Construction**

Primary housing is extruded aluminum, powder coated white at 1.2mm thick specially engineered for lightweight handling and heat dissipation. Reduces the fixture's operating temperatures to increase life of all electrical components and improved lumen maintenance over time. Complete fixture, including the driver housing and optical assembly are fully sealed and sit flush against the ceiling with no gap to protect the luminaire from environmental contaminants. Fixture is designed for use in wet locations.

**Optics**

LEDs are surface mounted to a metal printed circuit board (MCPCB) and is coupled with a polycarbonate diffusing lens. Designed to generate an extremely uniform wide distribution with optimized fixture to fixture spacing. Diffusing lens provides a uniform and soft visual appearance when in direct view with no LED pixelation and provides excellent visual comfort. Available in single 3000K CCT, or 3 selectable CCT's 3000K, 4000K and 5000K.

**Electrical**

UL recognized drivers are rated for 50,000 hours to deliver optimal performance over the extended system life of the luminaire. 120V 60HZ constant current driver with TRIAC dimming capability (dimming range of 100% to 10%) for use with secondary controls by others. Drivers shall have a power factor greater than 0.90 and less than 20% total harmonic distortion. Drivers are rated for FCC part 15 Class B use in commercial applications.

**Mounting & Installation**

Luminaire is designed for easy and quick installation with the included TwistFit Mounting System. The SMD6's driver is specifically designed with two tabs to twist and lock into place on the TwistFit mounting plate. Quickly install the TwistFit mounting plate over any junction box with two screws, connect the wires and twist the luminaire into place. Easily service the SMD6 from below the ceiling surface. The SMD6 offers alternative field installation by retrofitting into many existing 5" and 6" cans with the torsion spring and E26 adapter accessory kit (sold separately). Installer should ensure installation compatibility in any application and overall compliance to local and national building and electrical codes.

**IC Rating**

Luminaires installed in a ceiling filled with insulation, require an insulated contact (IC) rating. An IC rated fixture "shall be permitted to be in contact with combustible material or blanketed with thermal insulation", according to the Canadian Electrical Code section 30-906.

**Compliance & Certification**

All luminaires are cULus listed and are built for wet location use. Shall be suitable for use in -20° C (-4° F) to 45° C (113° F) high ambient environments. Complies to FCC part 15 Class B. Adheres to LM79, LM80 and TM21 industry standards for performance and lifetime calculations. Certified airtight per ASTM E283.04. ENERGY STAR® listed product. Suitable for use in clothes closets when installed in accordance with the NEC 410.16 spacing requirements. Always refer to ENERGY STAR® database for current listings by searching the first 6-digits of the model # followed by '##' on the ENERGY STAR® website database...(Ex. '565781##'). View ENERGY STAR® listing here: [model # 56578111-411](#) - [model # 56578211-311](#)

**Warranty**

The FMDL series of luminaires ships with ETi SSL's 5-year standard warranty. Complete warranty terms at: [www.etissl.com/warranty/](http://www.etissl.com/warranty/)



## FMDL Series

SMD6 Surface Mount Disk Light

1,010 - 1,592 Lumens | 13.7 - 19.7W | 3000K or 3 CCT | ENERGY STAR® | 5-yr Warranty

### ORDERING INFORMATION<sup>1,2,3</sup>

Example: FMDL-7.5IN-1000LM-8-CP3-SV-TD

FMDL	7.5IN		8		SV	TD
Series	Size	Nominal Lumens	CRI	CCT	Voltage	Dimming
FMDL Disk Light	7.5IN 7.5" Dia	1000LM 1500LM	8 80(min)	30K 3000K CP3 3 CCT Select 3000K 4000K 5000K	SV Single Volt 120V	TD TRIAC Dimming

Notes:

1. This product is not configurable, only designated 'Stock' SKUs are available.
2. See "Performance and Operational Data By Catalog Number" for all available SKUs.
3. Stock SKUs typically ship in 24-48 hours upon receipt of an approved released order.

### AVAILABLE STOCK ACCESSORIES (must be ordered separately, field installed)

Catalog Logic/PT#	Model#	Description
FLDL-RETROFITKIT	95657811101	Retrofit Torsion Spring with E26 Adapter Kit
FMDL-TRIM-BN	90600756	Brushed Nickel Trim
FMDL-TRIM-BZ	90600755	Oil Rubbed Bronze Trim
FMDL-TRIM-B	90600754	Black Trim
EMA25FY-170 <sup>1</sup> (G2)	70112202	Square Emergency LED Driver/BBU 25W, IP rated, 90 min, no dimming, <a href="#">Certified in CA Title 20 MAEDBS</a>
EMA40FY-170 <sup>1</sup> (G2)	70114402	Square Emergency LED Driver/BBU 40W, IP rated, 90 min, no dimming, <a href="#">Certified in CA Title 20 MAEDBS</a>
EMA40FY-170 <sup>1</sup> (G3)	70114402-2	Square Emergency LED Driver/BBU 40W, IP rated, 90 min, with dimming, <a href="#">Certified in CA Title 20 MAEDBS</a>

Notes:

1. BBU's certified in CA Title 20 MAEDBS. (search by BBU cat logic/PT#, Ex. 'EMA40FY-170')



FLDL-RETROFITKIT



FMDL-TRIM-BN



FMDL-TRIM-BZ



FMDL-TRIM-B

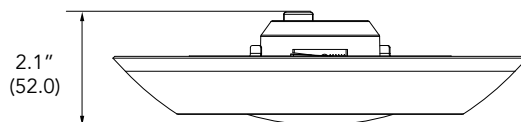


EMA25FY-170  
EMA40FY-170

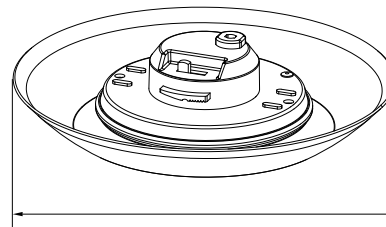


TwistFit Mounting System  
Included

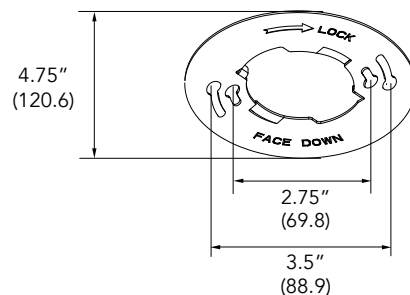
### DIMENSIONS



2.1"  
(52.0)



7.5"  
(190.5)



Note: All dimensions are in inches (millimeters).

## FMDL Series

SMD6 Surface Mount Disk Light

1,010 - 1,592 Lumens | 13.7 - 19.7W | 3000K or 3 CCT | ENERGY STAR® | 5-yr Warranty

### Performance and Operational Data By Catalog Number

Catalog Logic/PT# <sup>1</sup>	Model #	Size	Delivered Lumens	Wattage	LPW	CCT <sup>2,3,4</sup>	CRI	Voltage	Dimming	ENERGY STAR® <sup>5</sup>
FMDL-7.5IN-1000LM-8-30K-SV-TD	56578111	7.5" Dia	1,010	13.8	73.1	3000K	80 (min)	120V	TRIAC	Yes
FMDL-7.5IN-1000LM-8-CP3-SV-TD	56578211		1,047	13.7	76.5	3 CCT				
FMDL-7.5IN-1500LM-8-CP3-SV-TD	56578311		1,592	19.3	82.4	3 CCT				
FMDL-7.5IN-1500LM-8-30K-SV-TD	56578411		1,536	19.7	77.9	3000K				

Notes:

1. Stock SKUs typically ship in 24-48 hours upon receipt of an approved released order.
2. 3 CCT offers three Color Preference® options: 3000K, 4000K & 5000K.
3. 3CCT SKU's photometric values bases on tests performed at 3000K.
4. Installing contractor responsible for ensuring desired CCT is selected during installation. Factory CCT setting is 3000K.
5. Search first 6-digits of the model # followed by '##' on the ENERGY STAR® website database...(Ex. '565781##') to view certifications.

#### Load Information

Power Factor	> 0.90
THD	< 20%
Frequency	50/60 Hz
Sound Rating	< 20 DbA
Low Temp Start	-20° C (-4° F)
Max Temp	45° C (113° F)
Unit Weight (All units)	0.8 lbs

#### Shipping Information

Catalog Logic/PT#	Model #	UPC	Size	Unit Weight	Pallet
FMDL-7.5IN-1000LM-8-30K-SV-TD	56578111	849489064437	7.5" Dia	0.9 lbs	600 units per
FMDL-7.5IN-1000LM-8-CP3-SV-TD	56578211	849489064109	7.5" Dia	0.9 lbs	600 units per
FMDL-7.5IN-1500LM-8-CP3-SV-TD	56578311	849489064116	7.5" Dia	0.9 lbs	600 units per
FMDL-7.5IN-1500LM-8-30K-SV-TD	56578411	849489064444	7.5" Dia	0.9 lbs	600 units per

1. Case pack weighs 6.9 lbs (6 units / per case pack).
2. There are 100 case packs per pallet.

#### Lumen Maintenance

FMDL-7.5IN-1000LM-8-30K-SV-TD	
Ambient Temperature	TM-21 Lumen Maintenance (54,000 hours)
25° C (77° F)	> 69.8%

FMDL-7.5IN-1000LM-8-3CP3-SV-TD	
Ambient Temperature	TM-21 Lumen Maintenance (54,000 hours)
25° C (77° F)	> 68.6%

FMDL-7.5IN-1500LM-8-CP3-SV-TD	
Ambient Temperature	TM-21 Lumen Maintenance (54,000 hours)
25° C (77° F)	> 68.6%

FMDL-7.5IN-1500LM-8-30K-SV-TD	
Ambient Temperature	TM-21 Lumen Maintenance (54,000 hours)
25° C (77° F)	> 69.01%

### KEY PRODUCT FEATURES, DETAILS & SPECS

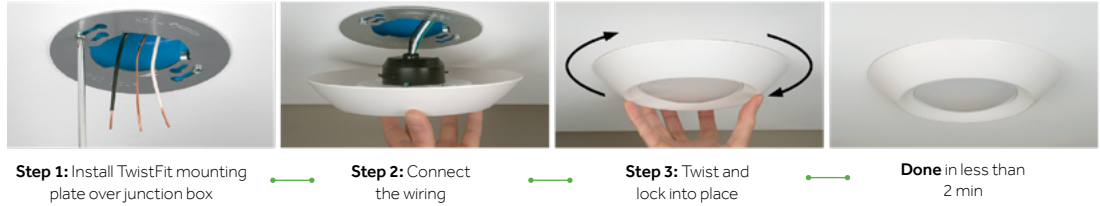
- ENERGY STAR® rated to meet strict efficiency, quality & lifetime criteria
- Up to 82 LPW provides 60+% in energy savings
- 13.8W @ 1,010 lumens, 13.7W @ 1,047 lumens, 19.3W @ 1,592 lumens, 19.7W @ 1,536 lumens
- 80+ CRI standard for true accurate color rendering & visual performance
- Fixture ships w/ TwistFit Mounting System for quick installation
- Extruded aluminum 1.2mm think for lightweight handling and maximizes life & performance
- 20° to 45° C (-4° to 113° F) high ambient temp rating for demanding applications
- Projected L70 @ 53,000 hours (per IES TM21 FMDL-7.5IN-1000LM-8-30K-SV-TD)
- Color trim kits available for added design flexibility
- Weighing in at only 0.8 lbs allows for ease of handling & fixture installation
- Optional retrofit torsion spring with E26 adapter kit for added install flexibility
- 120V drivers TRIAC dimming (down to 10%) capability
- BBU options for safety & code compliance (CA Title 20 MAEDBS)
- IC Rated for direct contact with insulation

# FMDL Series

SMD6 Surface Mount Disk Light  
1,010 - 1,592 Lumens | 13.7 - 19.7W | 3000K or 3 CCT | ENERGY STAR® | 5-yr Warranty

## TwistFit Mounting System (included)

The TwistFit Mounting System from start to finish in 3 easy steps.



## Torsion Spring & E26 Adapter Kit (sold separately)

Retrofit into many existing 5" & 6" cans



## 3-CCT Color Preference® (field selectable)



Patented ColorPreference® field selectable color temperature system and driver helps to provide added design flexibility and simplified SKU reduction and complexity.

An integrated switch on the driver box toggles between 3000K, 4000K and 5000K . (set to 3000K standard from the factory)

## PHOTOMETRIC DETAILS

### FMDL-7.5IN-1000LM-8-30K-SV-TD

#### Luminaire Data

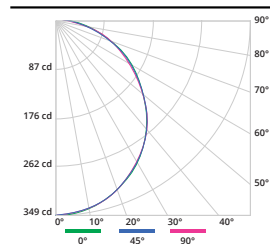
IES File Name	56578111.IES
CCT & CRI	3000K, 80CRI minimum
Initial Delivered Lumens	1,010
Wattage	13.8W
Efficacy	73
Beam Angle	50% = 111.3° 10% = 166.6°
Spacing	0° = 1.24 90° = 1.26

Photometric values based on tests performed in compliance with LM-63 & LM-79

#### Coefficients of Utilization

rc	Effective Floor Cavity Reflectance 20%																											
	80%				70%				50%				30%				10%				0%							
rw	70	50	30	10	70	50	30	10	70	50	30	10	70	50	30	10	70	50	30	10	70	50	30	10	70	50	30	10
RCR	0	119	119	119	116	116	116	116	111	111	111	106	106	106	102	102	102	102	100	100	100	100	100	100	100	100	100	
0	108	103	98	94	105	101	97	93	96	93	90	92	89	87	89	86	84	82	82	82	82	82	82	82	82	82	82	
1	98	89	82	76	95	87	81	75	84	78	74	80	76	72	77	74	70	68	68	68	68	68	68	68	68	68	68	
2	89	78	70	63	87	77	69	63	74	67	62	71	65	60	68	63	59	57	57	57	57	57	57	57	57	57	57	
3	82	69	60	54	79	68	60	53	65	58	52	63	57	52	61	55	51	49	49	49	49	49	49	49	49	49	49	
4	75	62	53	46	73	61	52	46	59	51	45	57	50	45	55	49	44	42	42	42	42	42	42	42	42	42	42	
5	69	56	47	40	67	55	46	40	53	45	40	51	44	39	50	43	39	37	37	37	37	37	37	37	37	37	37	
6	64	51	42	35	62	50	41	35	48	40	35	47	40	35	45	39	34	32	32	32	32	32	32	32	32	32	32	
7	60	46	37	32	58	45	37	31	44	37	31	43	36	31	41	35	31	29	29	29	29	29	29	29	29	29	29	
8	56	42	34	28	54	42	34	28	41	33	28	39	33	28	38	32	28	26	26	26	26	26	26	26	26	26	26	
9	52	39	31	26	51	39	31	26	37	30	26	36	30	25	36	30	25	23	23	23	23	23	23	23	23	23	23	
10																												

#### Indoor Candela Plot



#### Zonal Lumen Summary

Zone	Lumens	% Luminaire
0-30	127.3	12.6%
0-40	269.2	26.7%
0-60	772.9	76.5%
0-90	1005.7	99.6%
0-180	1010.2	100.0%

#### Candlepower

Angle	0°	90°
0	349	349
5	347	347
10	342	343
15	334	334
20	322	322
25	308	308
30	291	291
35	271	272
40	250	250
45	226	227
50	202	203
55	177	179
60	152	152
65	125	126
70	98	99
75	73	73
80	49	48
85	26	27
90	12	9





# FMDL Series

SMD6 Surface Mount Disk Light

1,010 - 1,592 Lumens | 13.7 - 19.7W | 3000K or 3 CCT | ENERGY STAR® | 5-yr Warranty

## PHOTOMETRIC DETAILS CONTINUED

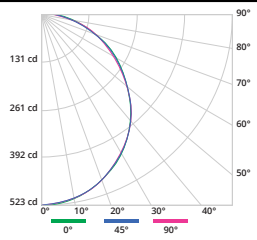
### FMDL-7.5IN-1500LM-8-30K-SV-TD

#### Luminaire Data

IES File Name	56578411.IES	
CCT & CRI	3000K, 80CRI minimum	
Initial Delivered Lumens	1,536	
Wattage	19.7W	
Efficacy	78	
Beam Angle	50% = 110.7°	10% = 166.9°
Spacing	0° = 1.24	90° = 1.24

Photometric values based on tests performed in compliance with LM-63 & LM-79

#### Indoor Candela Plot



#### Zonal Lumen Summary

Zone	Lumens	% Luminaire
0-30	404.5	26.3%
0-40	660.2	43.0%
0-60	1165.3	75.9%
0-90	1526.0	99.4%
0-180	1535.7	100.0%

#### Candlepower

Angle	0°	90°
0	522	522
5	520	520
10	513	512
15	500	499
20	483	483
25	460	460
30	434	433
35	405	404
40	372	372
45	338	338
50	302	302
55	265	265
60	226	226
65	186	186
70	147	147
75	118	118
80	71	73
85	39	41
90	13	16

#### Coefficients of Utilization

rc rw RCR	Effective Floor Cavity Reflectance 20%																									
	80%				70%				50%				30%				10%				0%					
	70	50	30	10	70	50	30	10	50	30	10	50	30	10	50	30	10	50	30	10	50	30	10	50	30	10
0	119	119	119	119	116	116	116	116	111	111	111	106	106	106	102	102	102	100	100	100	100	100	100	100	100	
1	108	103	98	94	105	101	97	93	96	93	90	92	89	87	89	86	84	82	82	82	82	82	82	82	82	
2	98	89	82	76	95	87	81	75	84	78	74	80	76	72	77	74	70	68	68	68	68	68	68	68	68	
3	89	78	70	63	87	77	69	63	74	67	62	71	65	60	68	63	59	57	57	57	57	57	57	57	57	
4	82	69	60	54	79	68	60	53	65	58	52	63	57	52	61	55	51	49	49	49	49	49	49	49	49	
5	75	62	53	46	73	61	52	46	59	51	45	57	50	45	55	49	44	42	42	42	42	42	42	42	42	
6	69	56	47	40	67	55	46	40	53	45	40	51	44	39	50	43	39	37	37	37	37	37	37	37	37	
7	64	51	42	35	62	50	41	35	48	40	35	47	40	35	45	39	34	32	32	32	32	32	32	32	32	
8	60	46	37	32	58	45	37	31	44	37	31	43	36	31	41	35	31	29	29	29	29	29	29	29	29	
9	56	42	34	28	54	42	34	28	41	33	28	39	33	28	38	32	28	26	26	26	26	26	26	26	26	
10	52	39	31	26	51	39	31	26	37	30	26	36	30	25	36	30	25	23	23	23	23	23	23	23	23	