

Wrap Lights

Wrap Lights for Commercial and Residential Applications

DLC Approved for Stairwell/Passageway & Linear Ambient



Featured Product:
4' Wrap Light with Step Dimming Motion Sensor
34w 3600 LM 54676241-1

ETI ADVANTAGE



- ✓ Patented Color Preference® model available
- ✓ Multiple lumen packages
- ✓ High-impact resistant poly-carbonate lens
- ✓ Optional motion control, battery back-up, and 0-10V dimmable

LIGHTING CONTROL AND SAFETY



70112202 • 25w Emergency LED Driver/BBU



70114402 • 40w Emergency LED Driver/BBU



90600145 • Motion Sensor with Daylight Sensor



90600144 • Step Dimming Motion Sensor, Microwave with Daylight Sensor

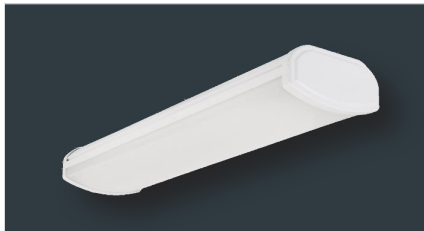


90600143 • Universal Wattage BBU

AVAILABLE MODELS

Features & Specifications

- Wide 110° beam angle • 120-277V/120V • >80CRI • 0-10V Dimmable • Temp rating -4°F-113°F
- L70 >50,000 • 5 year limited warranty • 4000K* (*except CP model)



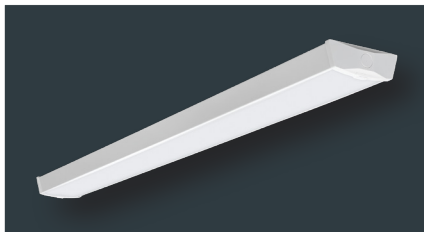
120-277V Commercial/Residential Wrap Lights

Base Model
 4' Wrap 34w
 3600 LM
 4000K
 54676241

2' Wrap 20w
 1800 LM
 4000K
 54655441

Includes Motion Sensor
 4' Wrap 34w
 3600 LM
 4000K, 54676241-1

Includes BBU
 4' Wrap 34w
 3600 LM
 4000K
 54676341



Includes Motion Sensor & BBU
 4' Wrap 34w
 3600 LM
 4000K, 54676341-1

High Lumen
 4' Wrap 57w
 5200 LM
 4000K
 54677441

Compact Wrap
 4' Wrap 40w
 3600 LM
 4000K
 56513141



120V Residential Wrap Lights

Wrap Light
 40" 30w
 2600 LM
 3000K/4000K/5000K
 56507113

4' Wrap with Motion Sensor
 4' 40w
 3600 LM
 4000K, 54676142

Closet Light
 18" Wrap 16w
 1200 LM
 4000K
 53603142

Wrap Lights

Project:
Part Number:

PART NUMBER GUIDE

CATEGORY	SIZE	LUMENS	CRI/CCT	VOLTAGE	DIMMING	OPTION
WR				MV		

PRODUCT/SKU DETAILS

GENERAL SPECIFICATIONS:

Voltage	120-277V/120V**	Frequency	50/60 Hz.	CRI	80*/90
Power Factor	>.90	THD	< 20%	Rating	cULus Damp
Temperature	-4°F to +113°F	Rated Life	50,000 hrs.	Warranty	5 Year Limited

ORDERING GUIDE

Part #	Model #	Description	Replaces	LED Watts	Lumens	LPW	CCT	Product Dimensions	CRI	Input Voltage	Case Pack
WR-2-20-940-MV-D	54655441	2' Wrap Light - 0-10V Dimmable [ENERGY STAR®]	32w T8	20w	1800	90	4000K	23.6 x 5.9 x 2.9 in.	90	120-277V	4
WR-4-36-940-MV-D	54676241	4' Wrap Light - 0-10V Dimmable	2 x 32w T8	34w	3600	106	4000K	48 x 5.9 x 2.9 in.	90	120-277V	2
WR-4-36-940-MV-D-OS	54676241-I	4' Wrap with Step Dimming Motion Sensor	2 x 32w T8	34w	3600	106	4000K	48 x 5.9 x 2.9 in.	90	120-277V	2
WR-4-36-940-MV-D-EM	54676341	4' Wrap with Battery Back-Up	2 x 32w T8	34w	3600	106	4000K	48 x 5.9 x 2.9 in.	90	120-277V	2
WR-4-36-940-MV-D-EM-OS	54676341-I	4' Wrap with Battery Back-Up and Step Dimming Motion Sensor	2 x 32w T8	34w	3600	106	4000K	48 x 5.9 x 2.9 in.	90	120-277V	2
WR-4-40-940-SV-N-OS	54676142**	4' Wrap Light with Motion Sensor [ENERGY STAR®]	2 x 32w T8	40w	3600	90	4000K	48 x 5.9 x 2.9 in.	90	120V	2
WR-4-57-940-MV-D	54677441	4' High Lumen Output Wrap Light - 0-10V Dimmable [ENERGY STAR®]	3 x 32w T8	57w	5200	91	4000K	48 x 10 x 3.1 in.	90	120-277V	2
WR-4-36-840-MV	56513141*	4' Compact Wrap Light [ENERGY STAR®]	2 x 32w T8	40w	3600	90	4000K	48 x 5 x 1.8 in.	80	120-277V	6
WR-40-26-802-SV-D	56507113**	40" COLOR PREFERENCE® Wrap Light - TRIAC Dimmable [ENERGY STAR®]	2 x 32w T8	30w	2600	87	3000K/4000K/5000K	39.9 x 4 x 2 in.	80	120V	2
WR-4-43-840-MV-D	56514142*	4' Commercial Wrap Light - 0-10V Dimmable	3 x 32w T8	39w	4300	110	4000K	48 x 7.4 x 2.7 in.	80	120-277V	2
CS-18-12-840-SV	53603142**	18" Closet Light with Pull Chain [ENERGY STAR®]	32w T8	16w	1200	75	4000K	18 x 4.3 x 2 in.	80	120V	2
Accessories											
MC601V	90600144	Step Dimming Motion Sensor (Internal, compatible with 54676241, 54676341, 56514142)	N/A	N/A	N/A	N/A	N/A	4.0 x 2.1 in.	N/A	120-277V	4
MC603S	90600145	Motion Sensor (Internal, compatible with 54676241, 54676341, 56514142)	N/A	N/A	N/A	N/A	N/A	3.5 x 1.4 in.	N/A	120-277V	4
EMJ-0825	90600143	Battery Back-Up - Compatible with 54676341	N/A	25w	N/A	N/A	N/A	2.2 x 10.1 x 9.9 in.	N/A	120-277V	6
EMA-25FY-170	70112202	Emergency LED Driver/BBU - Compatible with 54655441, 54656241	N/A	25w	N/A	N/A	N/A	12.4 x 2.3 x 1.5 in.	N/A	100-347V	10
EMA-40FY-170	70114402	Emergency LED Driver/BBU - Compatible with 54676142, 54677441, 56513141, 56507113	N/A	40w	N/A	N/A	N/A	12.4 x 2.3 x 1.5 in.	N/A	100-347V	10

PACKAGING SPECIFICATIONS

Part #	Model #	UPC	UCC	Inner Carton Dimensions	Inner Carton Weight	Shipper/Master Carton Dimensions	Shipper/Master Carton Weight
WR-2-20-940-MV-D	54655441	849489009988	50849489002274	27.7 x 6.9 x 3.8 in.	4.2 lbs.	28.3 x 8.3 x 14.6 in.	16.7 lbs.
WR-4-36-940-MV-D	54676241	849489005096	50849489005091	51.6 x 6.9 x 3.8 in.	6.8 lbs.	52.3 x 8.3 x 7.6 in.	13.98 lbs.
WR-4-36-940-MV-D-OS	54676241-I	849489005164	50849489005169	51.6 x 6.9 x 3.8 in.	6.8 lbs.	52.3 x 8.3 x 7.6 in.	13.98 lbs.
WR-4-36-940-MV-D-EM	54676341	849489009933	50849489009938	51.6 x 6.9 x 3.8 in.	10 lbs.	52.3 x 8.3 x 7.6 in.	21.2 lbs.
WR-4-36-940-MV-D-EM-OS	54676341-I	849489001968	50849489001963	51.6 x 6.9 x 3.8 in.	10 lbs.	52.3 x 8.3 x 7.6 in.	21.2 lbs.
WR-4-40-940-SV-N-OS	54676142	849489000817	50849489000812	51.6 x 6.9 x 3.8 in.	6.5 lbs.	52.3 x 8.3 x 7.6 in.	13.6 lbs.
WR-4-57-940-MV-D	54677441	849489009995	50849489009990	49.4 x 11.4 x 4.65 in.	9.5 lbs.	50.0 x 10.0 x 12.1 in.	19.8 lbs.
WR-4-36-840-MV	56513141	849489003849	50849489003844	51.6 x 5.5 x 2.7 in.	4.5 lbs.	52.2 x 8.8 x 11.9 in.	28.3 lbs.
WR-40-26-802-SV-D	56507113	849489006925	50849489006920	42 x 4.9 x 3.1 in.	3.4 lbs.	42.5 x 6.8 x 5.6 in.	8.1 lbs.
WR-4-43-840-MV-D	56514142	849489006897	50849489006892	50.4 x 10 x 5.6 in.	9.6 lbs.	50.9 x 11.9 x 10.5 in.	20.8 lbs.
CS-18-12-840-SV	53603142	849489007540	50849489007545	19.2 x 5.4 x 3.1 in.	1.7 lbs.	19.8 x 6.8 x 6.1 in.	4.03 lbs.
Accessories							
MC601V	90600144	849489009742	50849489009747	6.4 x 6.4 x 6.4 in.	1.1 lbs.	21.1 x 12.8 x 5.6 in.	18.7 lbs.
MC603S	90600145	849489009759	50849489009754	6.1 x 3.8 x 2.2 in.	0.9 lbs.	19.1 x 12 x 4.5 in.	14.6 lbs.
EMJ-0825	90600143	849489009322	50849489009327	6.9 x 3.9 x 2.2 in.	3.5 lbs.	16.5 x 8.1 x 6.2 in.	20.5 lbs.