

Compact Distribution Units

20-30-Amp Nonmetallic

Portable Jobsite Power



Standard Features:

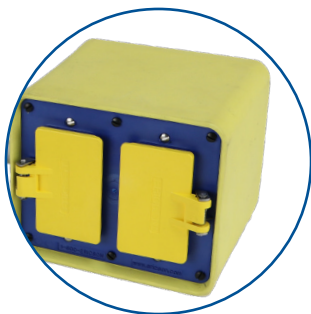
- 120V & 120/240V 20-Amp & 30-Amp Distribution Options
- Indoor and Outdoor Configurations
- NEMA Locking Plug Configurations to Match Popular Generator Outlets
- UL943 5th Edition GFCI Protected Outlets
- All Receptacles Meet Outdoor, WR Rating
- Class Exclusive Individual Receptacle Overloads
- Rugged, Non Surface Marring, Nonmetallic Enclosures
- Secure Deluxe Wire Mesh Strain Relief for Cord and Pull-Out Protection
- Water-Tight Locking Plugs with Nickel Plated Blades for Extended, Outdoor Use
- Cord lengths available in popular 6' & 25' lengths
- Receptacle, Box and Cover Assemblies – (SR20 and SR30)
- Custom Colors, Cord Type, Labeling and Receptacle Configurations Available

Market Applications:

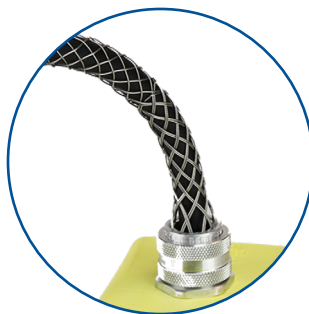
- Construction & Maintenance
- Rental
- Entertainment and Events
- Power Generation
- Petrochemical
- Utility
- Emergency Power
- Ship Building and Maintenance



Unique Features:



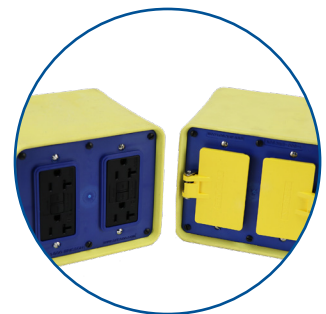
Rugged Nonmetallic Enclosures



Secure Wire Mesh Strain Relief



Individual Receptacle Overload Protection

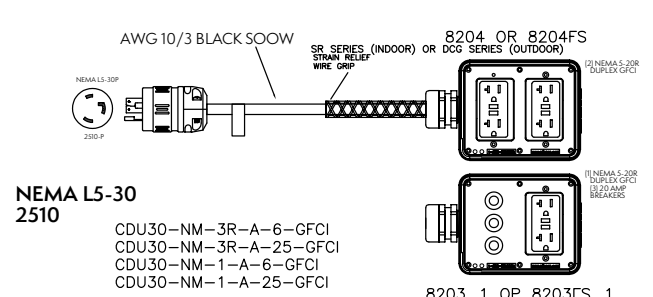
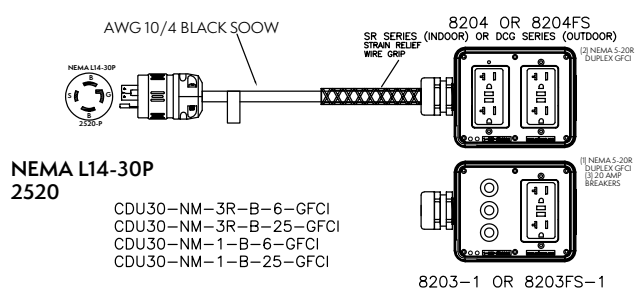
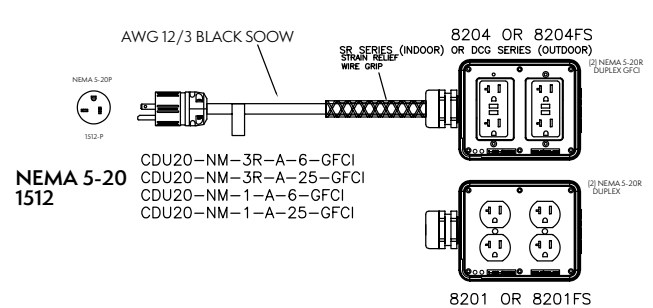
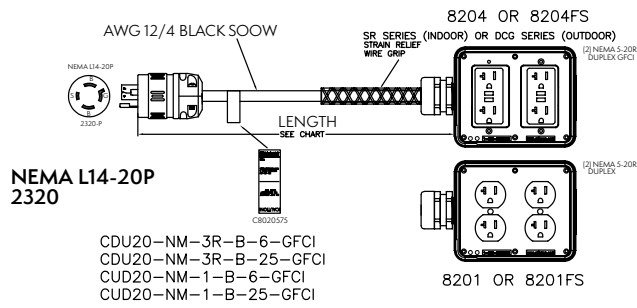


Indoor & Outdoor Configurations

Selection Guide

Main Features

| Part Number | Input Power | Environmental Rating | Input | Receptacles | Circuit Breakers | Cord Length (ft) |
|---------------------------|-----------------|----------------------|--------|---------------------------|------------------|------------------|
| CDU20-NM 20A Units | | | | | | |
| CDU20-NM-3R-A-6-GFCI | 20 Amp 125V | NEMA 3R | 5-20 | (4) NEMA 5-20 GFCI Duplex | N/A | 6 |
| CDU20-NM-3R-A-25-GFCI | 20 Amp 125V | NEMA 3R | 5-20 | (4) NEMA 5-20 GFCI Duplex | N/A | 25 |
| CDU20-NM-1-A-6-GFCI | 20 Amp 125V | NEMA 1 | 5-20 | (4) NEMA 5-20 GFCI Duplex | N/A | 6 |
| CDU20-NM-1-A-25-GFCI | 20 Amp 125V | NEMA 1 | 5-20 | (4) NEMA 5-20 GFCI Duplex | N/A | 25 |
| CDU20-NM-3R-B-6-GFCI | 20 Amp 125/250V | NEMA 3R | L14-20 | (4) NEMA 5-20 GFCI Duplex | N/A | 6 |
| CDU20-NM-3R-B-25-GFCI | 20 Amp 125/250V | NEMA 3R | L14-20 | (4) NEMA 5-20 GFCI Duplex | N/A | 25 |
| CDU20-NM-1-B-6-GFCI | 20 Amp 125/250V | NEMA 1 | L14-20 | (4) NEMA 5-20 GFCI Duplex | N/A | 6 |
| CDU20-NM-1-B-25-GFCI | 20 Amp 125/250V | NEMA 1 | L14-20 | (4) NEMA 5-20 GFCI Duplex | N/A | 25 |
| CDU30-NM 30A Units | | | | | | |
| CDU30-NM-3R-A-6-GFCI | 30 Amp 125V | NEMA 3R | L5-30 | (3) NEMA 5-20 GFCI Duplex | (3) 20A 1P | 6 |
| CDU30-NM-3R-A-25-GFCI | 30 Amp 125V | NEMA 3R | L5-30 | (3) NEMA 5-20 GFCI Duplex | (3) 20A 1P | 25 |
| CDU30-NM-1-A-6-GFCI | 30 Amp 125V | NEMA 1 | L5-30 | (3) NEMA 5-20 GFCI Duplex | (3) 20A 1P | 6 |
| CDU30-NM-1-A-25-GFCI | 30 Amp 125V | NEMA 1 | L5-30 | (3) NEMA 5-20 GFCI Duplex | (3) 20A 1P | 25 |
| CDU30-NM-3R-B-6-GFCI | 30 Amp 125/250V | NEMA 3R | L14-30 | (3) NEMA 5-20 GFCI Duplex | (3) 20A 1P | 6 |
| CDU30-NM-3R-B-25-GFCI | 30 Amp 125/250V | NEMA 3R | L14-30 | (3) NEMA 5-20 GFCI Duplex | (3) 20A 1P | 25 |
| CDU30-NM-1-B-6-GFCI | 30 Amp 125/250V | NEMA 1 | L14-30 | (3) NEMA 5-20 GFCI Duplex | (3) 20A 1P | 6 |
| CDU30-NM-1-B-25-GFCI | 30 Amp 125/250V | NEMA 1 | L14-30 | (3) NEMA 5-20 GFCI Duplex | (3) 20A 1P | 25 |



Input and Output Cordsets & Power Receptacles

| Part Number | Male Inlet Type | Phase | Description |
|---|---|-------|--|
| 20 Amp Cordsets | | | |
| 123B | NEMA 5-15 | 1 | COMMERCIAL GRADE 50FT OF 12/3 SJTW CABLE, PRI: 5-15 & SEC: 5-15C LIGHTED |
| 123D | NEMA 5-15 | 1 | COMMERCIAL GRADE 100FT OF 12/3 SJTW CABLE, PRI: 5-15P & SEC: 5-15C LIGHTED |
| 20A & 30A Receptacle Assembly | | | |
| SR20 | L14-20R | 1 | 20A PWR L14-20 RECPT W/METAL WATERPROOF BOX AND 21" #12 LEADS |
| SR30 | L5-30 | 1 | 30A PWR L5-30 RECPT W/METAL WATERPROOF BOX AND 21" #10 LEADS |
| SR30-1 | L14-30 | 1 | 30A PWR L14-30 RECPT W/METAL WATERPROOF BOX AND 21" #10 LEADS |
| 20A & 30A Factory Assembled Cordsets | | | |
| 1512P123B | 5-20 | 1 | 20A, 50FT of 12/3 SOOW W/5-20 INDUSTRIAL GRADE PLUG AND CONNECTOR |
| 1512PW6P123B | 5-20 | 1 | 20A, 50FT of 12/3 SOOW W/5-20 WATERTIGHT PLUG AND CONNECTOR |
| 2320P124B | L14-20 | 1 | 20A, 50FT of 12/4 SOOW W/L14-20 INDUSTRIAL GRADE PLUG AND CONNECTOR |
| 2320PW6P124B | L14-20 | 1 | 20A, 50FT of 12/4 SOOW W/L14-20 WATERTIGHT PLUG AND CONNECTOR |
| 2510P103B | L5-30 | 1 | 30A, 50FT-10/3 SOOW CABLE W/L5-30 INDUSTRIAL GRADE PLUG & CONNECTOR |
| 2510PW6P103B | L5-30 | 1 | 30A, 50FT-10/3 SOOW CABLE W/L5-30 WATERTIGHT PLUG & CONNECTOR |
| 2520P104B | L14-30 | 1 | 30A, 50FT-10/4 SOOW CABLE W/L14-30 INDUSTRIAL GRADE PLUG & CONNECTOR |
| 2520PW6P104B | L14-30 | 1 | 30A, 50FT-10/4 SOOW CABLE W/ L14-30 WATERTIGHT PLUG & CONNECTOR |
| Cable and Hose Protection- TuffTraxx | | | |
| CP5-36-ID | 5 Channel Tufftraxx, Industrial Duty, Cable & Hose Protectors | | |



123B/123D



123B-TT/123D-TT



SR20/SR30/SR30-1



5-20-L14-30 50FT



CDU-30



CDU-50



NM3-T50SL



NM3-CAMD13140



Ericson Manufacturing Company
4323 Hamann Parkway
Willoughby, OH 44094, USA



1-800-374-2766
info@ericson.com
L1000855A