

Rotating Wall Pack

Single & Double Module



Light up your outdoor area with the EnVision Bolt Series, a line of Area Light fixtures with high lumen per watt efficacy (minimum 130lm/w). The Bolt Wall Packs are available in a variety of different styles: non-cutoff, fully cut-off, semi cut-off, adjustable, and a rotatable up/down light. EnVision's rotating wall pack is an architectural LED luminaire that allows end users to rotate the modules in a complete 360° to light up a desired area. The fixtures are slim and low profile while providing a high lumen output.

Detail Specification:

- CRI >80 LED Chips
- 120-277V or 277-480V flicker-free driver, PF >0.9
- 0-10V Dimmable for controls
- Type II Adjustable forward throw beam angle
- 10KV Surge protector standard
- IP65 Wet Location Rated
- Operating Temp: -4°-114°F

Mounting:

- Wall mounted
- J-box from the backside
- Wire into the 1/2" threaded hub
- See installation guide for more information available.

Applications:

- General outdoor lighting
- Commercial buildings
- Pathways, sidewalks, streets, etc.

Product Information:

- Sturdy die-cast aluminum housing finished with corrosion free powder coat
- 360° rotating heads, no tools needed
- 1/2" knockouts on each side and bottom
- Bronze finish standard. Custom color options available.
- Instant-on, no warm up period
- Compatible with sensors, photocells, emergency backups
- L70 @ 70,000 Hours lumen maintenance

Certifications:

- UL Listed for USA and CA
- DLC Listed
- IESNA LM-79 & LM-80 tests available
- FCC CFR 47, FCC Part 15, Subpart B:2017
- 7 Year EnVision LED Limited Warranty

What's Included:

- LED Fixture
- Mounting Bracket
- Installation Guide

LED-WPROT2 - Watts - Color - Finish - Accessories - EMB - Warranty

1 2 3 4 5 6 7

| 1 Product | 2 Watts | 3 Color | 4 Finish | 5 Accessories | 6 Emergency | 7 Warranty |
|------------|--|---|---|---|---|--|
| LED-WPROT2 | 25WS 25w / 3,600lm 40WS 40w / 4,890lm 60WD 60w / 8,2300lm 80WD 80w / 10,875lm | 30K 3000K 40K 4000K 50K 5000K TRI 3CCT Selectable: 50/40/30K <i>(Only Available for: 25WS and 60WD fixtures)</i> | BZ Bronze *WH White *BLK Black *GRY Gray (*Custom 10 Day lead time) | (Blank) None MS Motion Sensor PC Photocell | (Blank) None EMB Emergency Backup | (Blank) 5 Year (incl.) 10YR 10 Year |

Specs and model numbers are subject to change with or without notice.

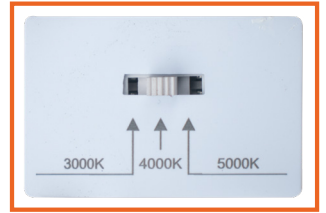
Reliable Chips

EnVision LEDs chips achieve over 130lm/w for increased energy efficiency



Bronze Finish

Powder coated frame with bronze anti-corrosion primer



3 CCT Selection



Optional Photocell Dusk to Dawn



360° Rotation

1/2" Knockouts

On sides and end bottom of the fixture

Easy Installation

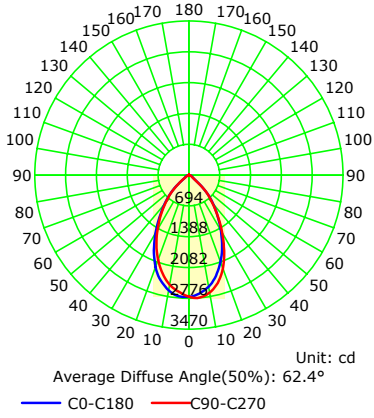
Screws secure the mounting plate into the wall

MEASUREMENTS



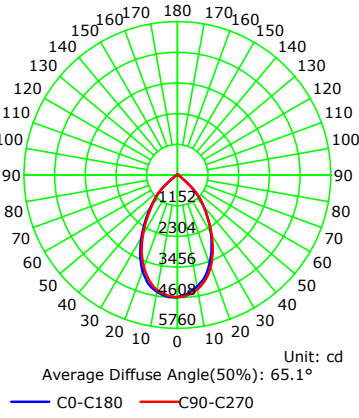
PHOTOMETRICS

Luminous Intensity Distribution Curve



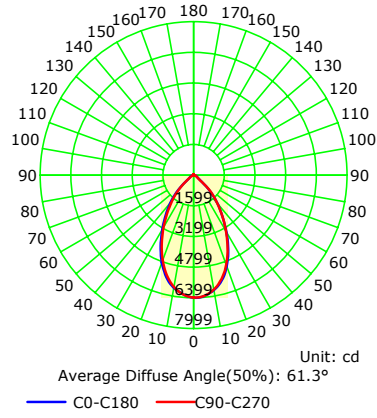
25W

Luminous Intensity Distribution Curve



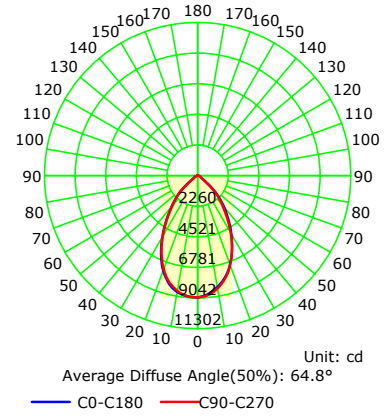
40W

Luminous Intensity Distribution Curve



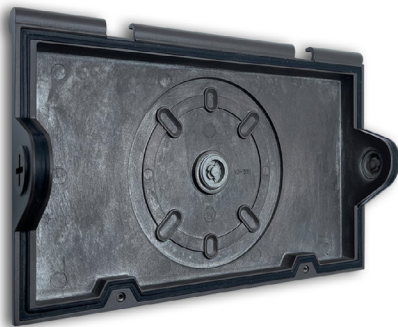
60W

Luminous Intensity Distribution Curve



80W

INSTALLATION



**Install Back Plate
to Junction Box**



**Latch Main Body
to Back Plate**



**Tighten Screws
to Secure Fixture**