

Project: _____
 Part#: _____
 Type: _____

Linear LED High Bay



The EnVision LED Linear High Bay series is offered in different lumen packages, lengths, and lenses. EnVision makes it easy: add emergency back ups, motion sensors, choose between a frosted or clear lens, add a wire guard, and more. Each fixture comes standard with a suspension kit and hooks for easy install.

Detail Specifications

- Operating temperature -4 -- + 122 F°
- PF >0.9 /50/60Hz
- Beam Angle: 120°

Why pick the EnVision High Bay?:

- Each high bay is tested for 120 hours before being packed and shipped
 - Several optional customizable specs available
 - Internal motion sensor ability adds nice finish
- (Only available with 4FT fixture)*

Applications:

- Warehouse lighting
- Industrial lighting
- High ceiling lighting

Product Information:

- Replace existing fixtures or use in new construction
- 0-10V dimmable makes it easy to add controls
- Uniformed distribution of light
- High lumen per watt helps increase energy savings
- Average life (L70) of 70,000 hours with the integration of Epistar 2835 LED Chips
- IP20 Rated for protection against basic touch
- 5 Year Limited Warranty (10 year available)

LED-LHB	Size/Watts	Lens/Finish	Color	Voltage	Sensor	ACCS	Emergency	Warranty
1	2	3	4	5	6	7	8	9

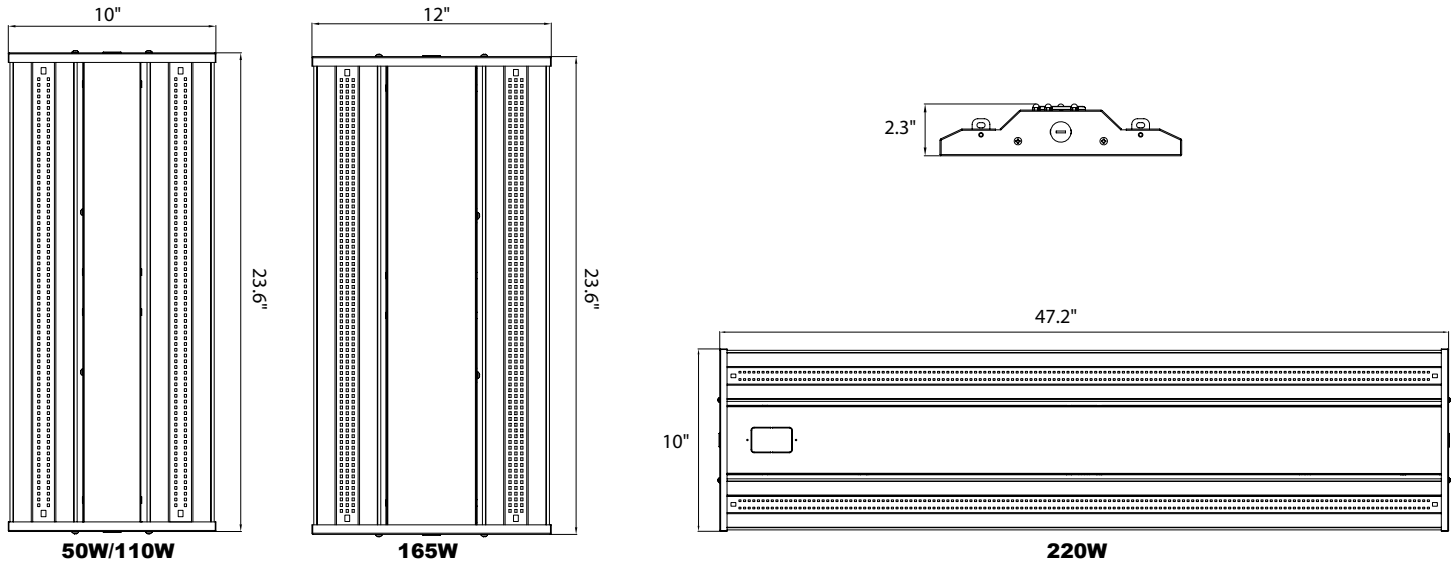
1	Product	2	Watts	3	Lens	4	Color	5	Voltage	6	Sensor	7	Accessories (optional)	8	Emergency (optional)	9	Warranty
LED-LHB	LED Linear High Bay	1FT-50W	6,250 (frost) 7,000 (clear)	WH-F Frosted WH-C Clear	40K 4000k 50K 5000k	(Blank) 120/277V HV 200/480V	None Motion Sensor (Internal) BMS* Bi-Level Motion Sensor (Internal)	(Blank) MS PM WG	Chain Mount Surface Mount Pendant Mount Wire Guard	(Blank) None Emergency Backup (90 Mins Internal or Attached 15W)	(Blank) None 10YR	5 Year (incl.) 10 Year					
		4FT-220W	30,000 (frost) 30,800 (clear)	(White Finish)	40K-6' 4000k 50K-6' 5000k	w/ 6' Whip											
		Wattage Selectable 145 Lumens/W		Wattage Selectable fixtures include suspension kit and 6' whip													
		2FT-3M110	60/80/110W														
			8,700lm (60W) / 11,600lm (80W) / 15,950lm (110W)														
		2FT-3M165	125/150/165W														
			18,125lm (125W) / 21,750lm (150W) / 23,925lm (165W)														
		4FT-3P320	260/290/320W														
			37,700lm (260W) / 42,050lm (290W) / 46,400lm (320W)														

*Includes daylight harvesting
 Internal Motion Sensor only available with 4FT fixture

Specs and model numbers are subject to change with or without notice

LED LINEAR HIGH BAY

DIMENSIONS



FEATURES

Side Knockouts
Add optional accessories including emergency back ups

Reliable LED Chips
Philips 3030 LED chips for longevity, consistent color, and reliability

High Quality Lens
Long lasting lens that does not yellow after short period of use

Easy Open
Easily open the side frame to change from frosted to clear lens in 60 seconds

Selectable Wattage
Choose between different wattages with the flick of a switch; One item, three different fixtures. **(2FT-3M110 and 2FT-3M165 ONLY)**

Integrated Sensor
Motion sensor doesn't stick out of the fixture, EnVision has created the perfect spot for sensors **(4FT ONLY)**

LED LINEAR HIGH BAY

ACCESSORIES

Pre-installed Accessory	Description
LHB-220W-HV	300-480V High Voltage Driver (220W)
Add '-MS' to model #	On/Off Motion Sensor
Add '-BMS' to model #	Bi Level Motion Sensor
Add '-EMB' to model #	Emergency Backup (External 15W)

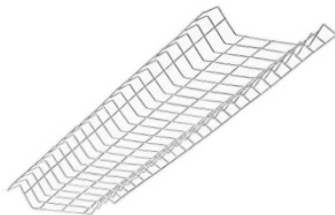


Motion Sensor



Emergency Backup

Accessory Model	Description
HD406VRH-D-WH	Bi Level Motion Sensor (Not Installed)
LHB-110/165-WG	Linear Highbay Wire Guard 2ft
LHB-220-WG	Linear Highbay Wire Guard 4ft
LED-LHB-2FT-CLENS	Linear Highbay Clear Lens 2ft
LED-LHB-4FT-CLENS	Linear Highbay Clear Lens 4ft
LED-LHB-UNV-SM	Linear Highbay Surface Mount
LED-LHB-2FT-PDM	Linear Highbay Pendant Mount 2ft
LED-LHB-4FT-PDM	Linear Highbay Pendant Mount 4ft



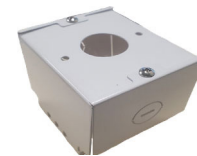
Wire Guard



Pendant Mount 2ft



Surface Mount



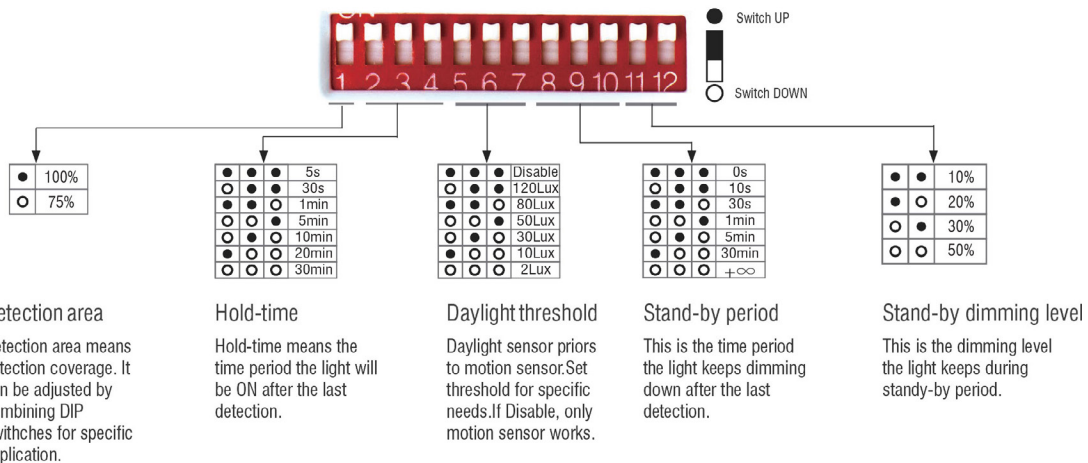
Pendant Mount 4ft

MOTION SENSOR

Technical Data

Operating Voltage	120-277VAC, 50Hz/60Hz	Microwave Power	<1mW
Switching Capacity	Max,3.0A@120Vac,50/60Hz Max,2.0A@277Vac,50/60Hz	Mounting Height	Max.15m
Stand-by Power	<1W	Detection Range	Max.ø14m
Detection Area	25%/50%/75%/100%	Control Line	Brown L, Blue N, Yellow L', Black -, Red +
Hold Time	5s/30s/1min/3min/5min/10min/20min/30min	Operating Temperature	-35°C ~ +60°C
Daylight Threshold	2Lux/10Lux/30Lux/50Lux/80Lux/120Lux/Disable	Detection Angle	30° - 150°
Stand-by Period	0s/10s/30s/1min/5min/10min/30min/+∞	Safety Standard	EN61347-1 EN61347-2-13 EN60598-1
Stand-by Dimming Level	10%/20%/30%/50%		
Microwave Frequency	5.8GHz ± 75MHz		

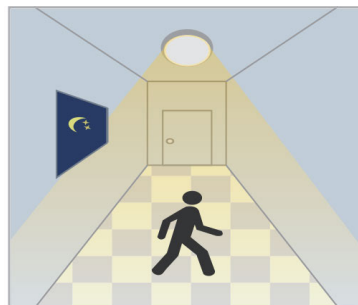
Settings



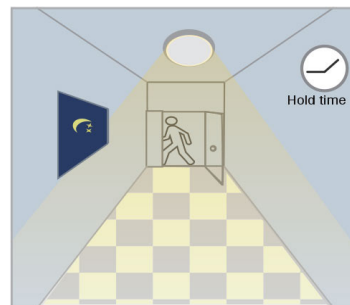
Applications



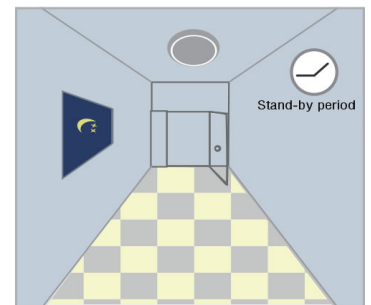
With sufficient daylight, even when motion detected, light remains OFF.



With insufficient daylight, when motion detected, light ON.



After last detection, the light will be dimmed down to the stand-by dimming level (10%, 20%, 30% or 50%) after holdtime.



After the stand-by period, light OFF.