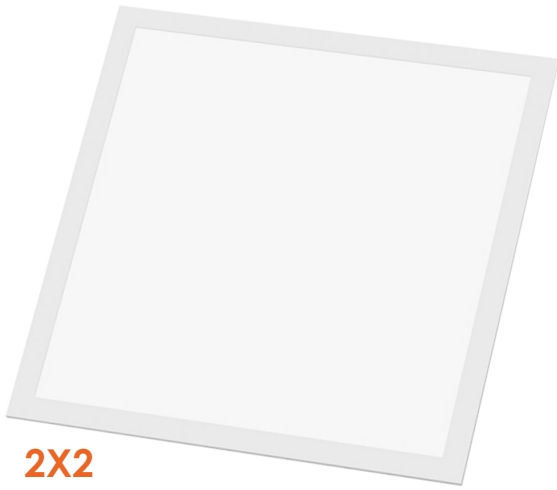


Project: _____
 Part#: _____
 Type: _____



2X4



2X2



1X4

Watts	Lumens
20W	2,200
30W	3,300
40W	4,400
50W	5,500

Back-lit LED Panel

3-Power + CCT Selectable

The EnVision LED Back-lit Panel has a unique modern design configured to combine high performance LED chips and our leading technology diffuser, which makes the ideal solution for any commercial lighting need. Now, with power changing and selectable color temperatures, these panels will suit all of your needs! This high efficient luminaire provides long-life and uniform illumination, in addition to being equipped with a 0-10V dimmable driver.

Applications:

- Suspended Installation
- Commercial Lighting
- Recessed Lighting
- General Indoor Lighting

Product Information:

- Even light distribution
- Damp location rated
- 110° Beam angle
- Dimmable: Compatible with 0-10V dimmers down to 5%
- No yellowing of the lens



1	Product	2	Size/Wattage	3	Color	4	Accessories	5	BMS	6	EMB	Warranty
LED-BPL	Back-lit Panel	1X4-3M40 2X2-3M40 2X4-3M50	20/30/40W (110lm/w) 20/30/40W (110lm/w) 30/40/50W (110lm/w)	TRI	35/40/50K (Blank) SM FLNG SK	None Surface Mount Frame Kit (3.5" Height) Flange (Drywall) Kit Suspension Kit	(Blank) BMS Bi-Level Motion Sensor LRD Bi-Level Motion Sensor Ceiling Application	None None	(Blank) EMB Emergency Backup (External 15W)	None (Blank) 10YR	5 Year (incl.) 10 Year	

FEATURES

Unique Back-Lit Design

The unique back-lit design provides a diffuse, shadow-less light

Powder-Coated white frame

Frosted Lens

No UV, no yellowing
no LGP

3-Power + CCT Selectable

Choose between 3 different wattages and 3 different color temperatures with just the flick of a switch

Selectable Power:

20/30/40W (1x4/2x2) 30/40/50W (2x4)

Selectable Color: 35/40/50K



Emergency Backup

Optional 90 minute emergency backup

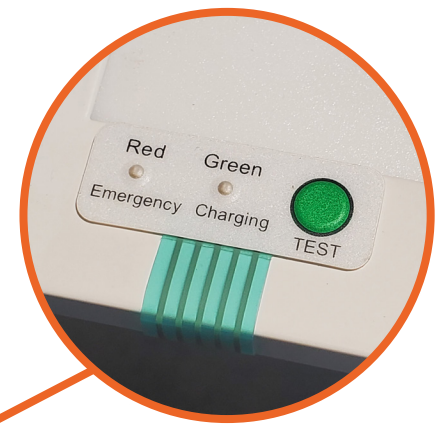
Integrated Driver

Flicker-free integrated driver, 0-10V dimmable

Sticky Slim Test Button

Test button will be pre-installed to the flange of the fixture. No need for external junction box for test switch

Works for Drop Ceiling, Flange, Surface Mount Application

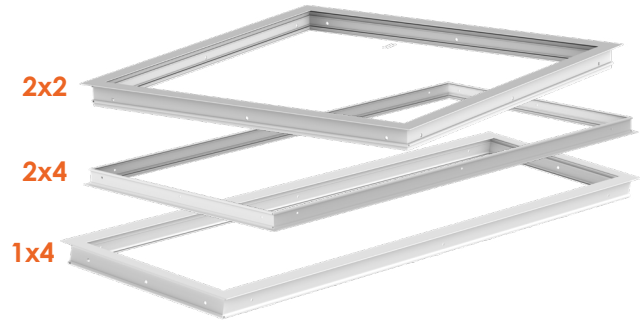


Optional Accessories

Surface Mount Frame



Flange (Drywall) Kit



Ceiling Cut Out Dimensions:

1X4: 12.5" X 48.5"

2X2: 24.5" X 24.5"

2X4: 24.75" X 49"



Emergency Backup



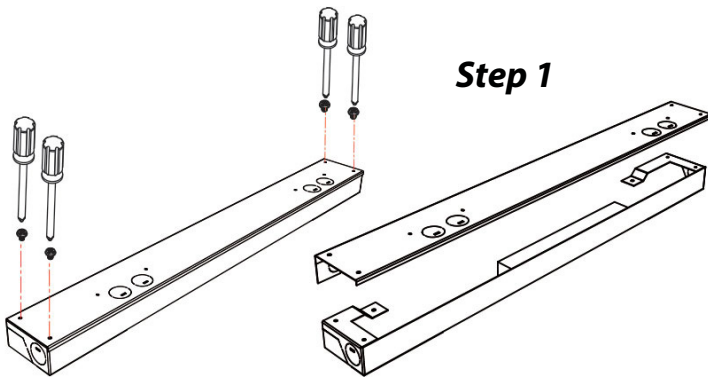
Suspension Kit

Panel Accessories

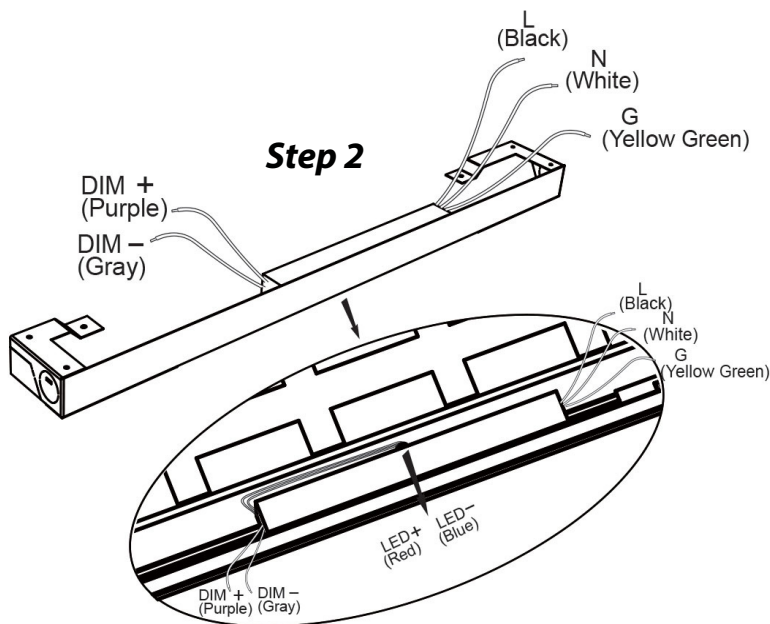
Model	Description
LED-PNL-1X4-SM	Surface Mount Frame 1x4
LED-PNL-2X2-SM	Surface Mount Frame 2x2
LED-PNL-2X4-SM	Surface Mount Frame 2x4
LED-PNL-1X4-FLNG	Flange (Drywall) Kit for Panels 1x4
LED-PNL-2X2-FLNG	Flange (Drywall) Kit for Panels 2x2
LED-PNL-2X4-FLNG	Flange (Drywall) Kit for Panels 2x4
LED-PNL-1X4-SK	Suspension Kit for Panels 1x4
LED-PNL-2X2-SK	Suspension Kit for Panels 2x2
LED-PNL-2X4-SK	Suspension Kit for Panels 2x4
LED-EMB-15W-LV-SS	External 15W Emergency Backup
HD407V-CR	Bi-Level Motion Sensor for each individual fixture
DS-LRD509	Bi-Level Motion Ceiling Sensor for group of fixtures

Installation Instructions**Regular Installation**

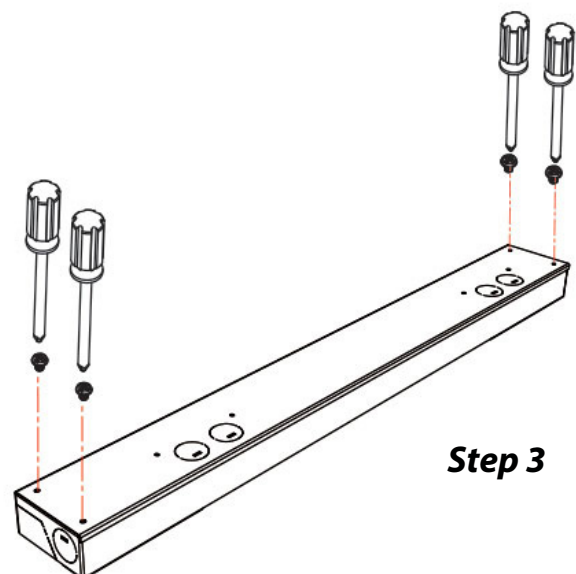
Step 1: Open the cover of junction box with phillips screwdriver



STEP 2: For AC input, connect neutral wire (White) to AC-N, Live wire (Black) to AC-L and Ground wire (Yellow Green) to the screw wire logo. For 0-10V dimmer wiring: connect the dimmer+ wire to the DIM+, connect the dimmer- wire to the DIM-.



Step 3: Put the cover back and tighten screws



Installation Instructions

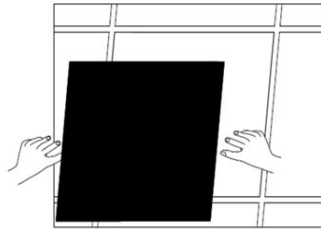
Recessed Installation in Suspended Grid Ceiling

Step 1: Move away ceiling tile

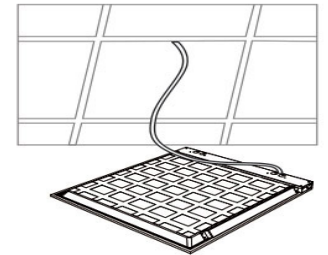
Step 2: Connect power supply

Step 3: Put the panel light into framework

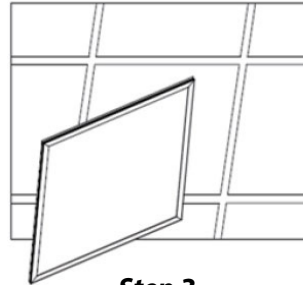
Step 4: Finish the installation



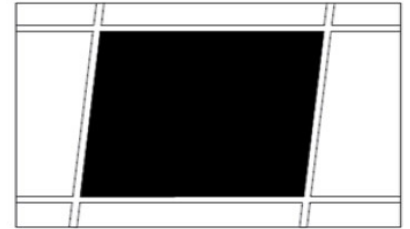
Step 1



Step 2

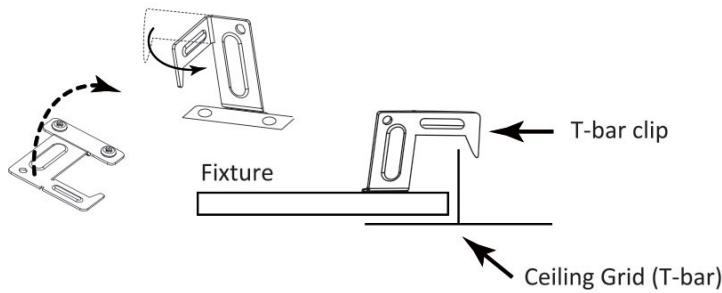


Step 3



Step 4

T-Bar clips should be bent out to provide additional safety and support. Additional support means may be required by local or national codes. Hold provided may be used to further secure fixture from above.



Dimensions

