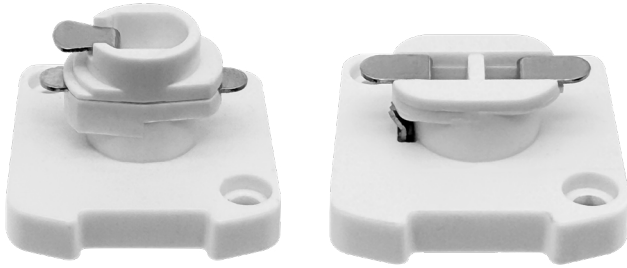




ARCY-Line: Track Heads

H & J Style - COB 5-CCT Selectable



H-TYPE

J-TYPE



Detail Specifications:

- Finish: White, Black
- Damp Location Rated
- Chip: High Lumen COB, R9 >50, CRI >90
- 2 Step MacAdam Ellipses
- Operating Temperature: -40° - 114° F
- Lens: PMMA Clear Lens
- Average life (L70) of 50,000 hours

Applications:

- General Track Lighting
- Residential & Multifamily
- Art Galleries, Museums
- Office and Meeting Rooms
- Education, Healthcare, Retail, Hospitality

Product Information:

- Metal housing and trim for better heat dissipation
- 350° Horizontal Rotation, 90° Vertical Rotation
- Interchangeable beam angles
- For use with H-Type track or surface mount installation
- Select-n-Switch Technology: 5-CCT
- Instant-On to full brightness

Driver Options:

- Voltage: 120V
- Triac Dimmable Down to 5%
- THD: <20% (+/-5% tolerance), PF >0.9, 50/60Hz
- Built in 2.5Kv Surge Protector
- Flicker Free

Mounting & Installation:

- Includes interchangeable J and H Track adapter
- Surface mount accessory option available for 3/40 J-Box

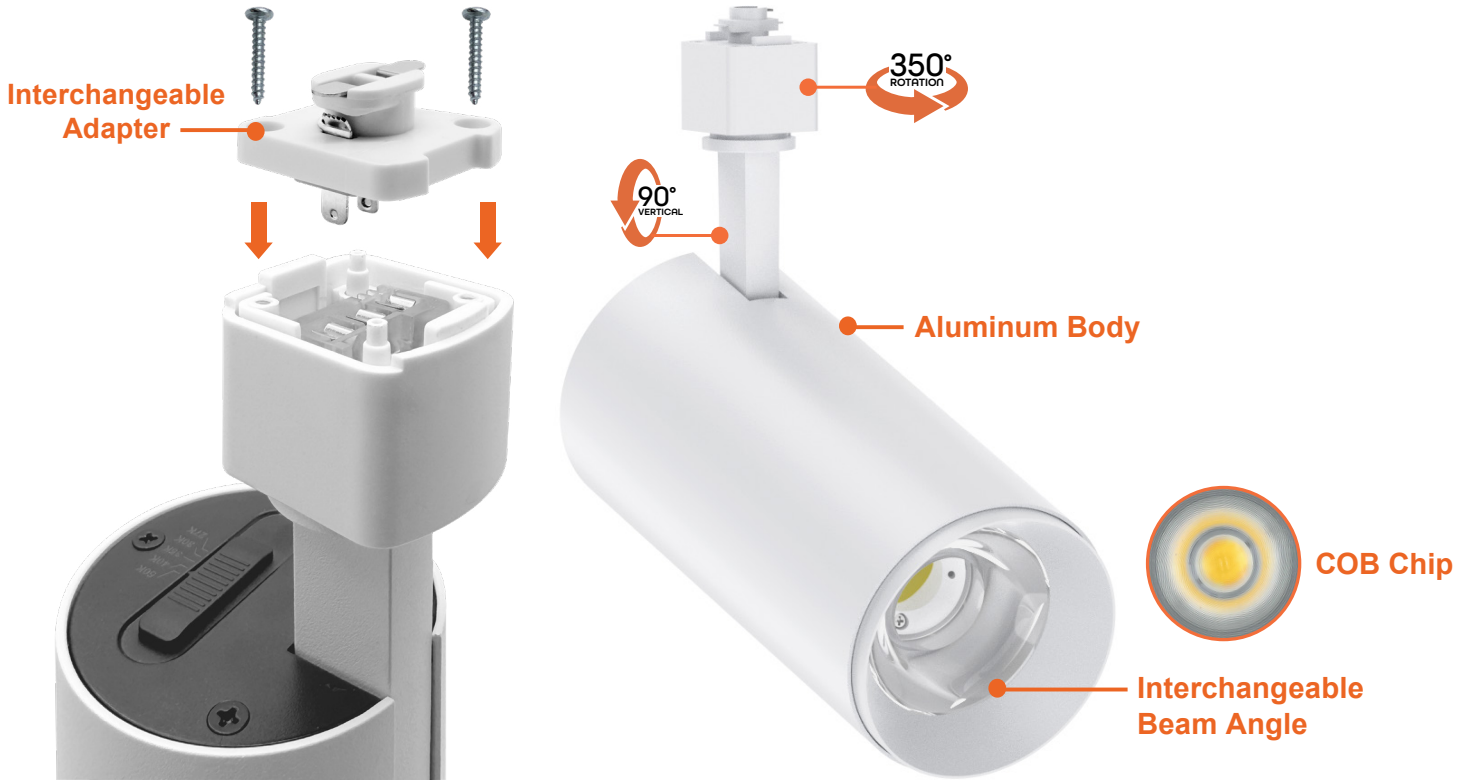
Certifications:

- ETL Listed for USA and CA
- 5 Year Limited Warranty
- FCC CFR 47, GCC Part 15, Subpart B:2017
- IC Rated and ASTM-E283 Air-Tight
- Complies with UL 263, ASTM E119, CAN ULC S101

| Series | Beam Angles | Finish | Mounting | Optional Accessories (Order Separately) | |
|--------------------------------------|--|---------------------|--------------------------------|---|--|
| LED-AT-JH-10W-5CCT 1,000lm | 30D ¹ 30° | WH White | (Blank) H-Type Track | Optic Lens | Surface Mount |
| LED-AT-JH-20W-5CCT 2,000lm | 36D ¹ 36° | BLK Black | SM Surface Mount | ATH-10W-24D 24° Beam Angle | ATH-SM Surface Mount for 30/40 Jbox |
| LED-AT-JH-30W-5CCT 3,000lm | 24D 24° 60D 60° | | | ATH-10W-60D 60° Beam Angle | |
| | | | | ATH-20W-24D 24° Beam Angle | |
| | | | | ATH-20W-60D 60° Beam Angle | |
| | | | | ATH-30W-24D 24° Beam Angle | |
| | | | | ATH-30W-60D 60° Beam Angle | |

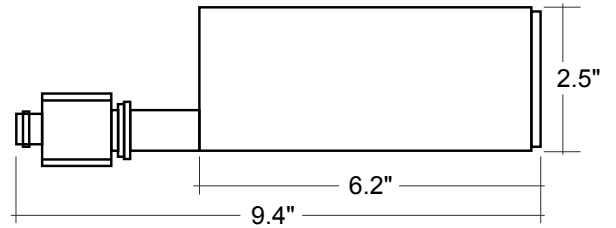
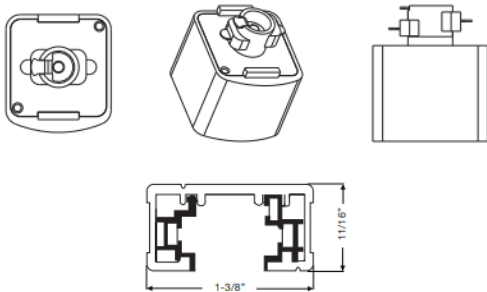
1. • 30D standard on 10W.
• 36D standard on 20W & 30W.
• 24D & 60D available for all sizes

Specs and model numbers are subject to change with or without notice.



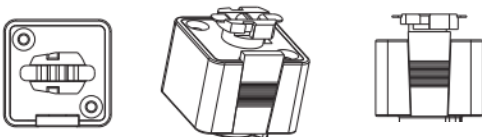
DIMENSIONS

H Type Adapter



10W

J Type Adapter

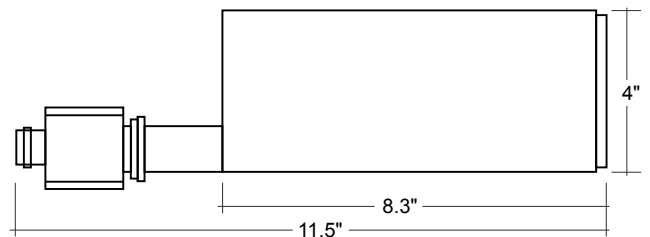
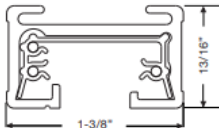


20W

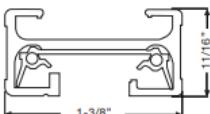
Single Circuit



Two Circuits



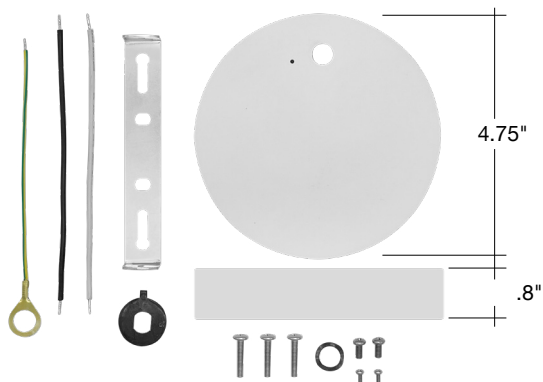
30W



ACCESSORIES



LENS



ATH-SM

QUICK SHIP MODELS

| Model | Voltage |
|--------------------|---------|
| LED-AT-JH-10W-5CCT | 120V |
| LED-AT-JH-20W-5CCT | 120V |
| LED-AT-JH-30W-5CCT | 120V |

OPTIC LENS

| Model | Description |
|-------------|----------------------------------|
| ATH-10W-24D | Track Heads: ACRY-Line 24D Optic |
| ATH-10W-60D | Track Heads: ACRY-Line 60D Optic |
| ATH-20W-24D | Track Heads: ACRY-Line 24D Optic |
| ATH-20W-60D | Track Heads: ACRY-Line 60D Optic |
| ATH-30W-24D | Track Heads: ACRY-Line 24D Optic |
| ATH-30W-60D | Track Heads: ACRY-Line 60D Optic |

SURFACE MOUNT

| Accessory | Description |
|-----------|------------------------------|
| ATH-SM | Surface Mount for 30/40 Jbox |

TESTED COMPATIBLE DIMMERS

Other dimmers may be compatible but have not been tested. Please contact us for more information.

| Lutron | Leviton | Toshiba | Panasonic |
|-------------|---------|---------|-----------|
| DVCL-153P | 6674 | WDG9001 | WN575149 |
| SCL-153P | | | |
| LGCL-153P | | | |
| MACL-153M | | | |
| MSCL-OP153M | | | |
| S-600P | | | |
| AYCL-153 | | | |
| DV-600P | | | |