



Large Area Lights Gen 2 3-Power + 3 CCT Selectable

Light up your outdoor area with the new EnVision Bolt Series, our latest line of Area Light fixtures with high lumen per watt efficacy combined with a stunning finish. The EnVision area flood lights are equipped with a die-cast aluminum housing, finished with a matte bronze powder coat paint, and anti-corrosion priming. The Large BOLT series are available in a trunnion, yoke, slip fitter, or straight arm mount. Enjoy lighting up your outdoor are with over 140-145lm/w+ efficiency.

Applications:

- General outdoor lighting
- Landscape lighting
- Pathways, streets, loading areas, etc.
- Stadium lighting
- Ideal for exceptional lighting in car dealerships

Detail Specifications:

- Average life (L70) of 70,000 hours with the integration of Philips Lumileds 3030 chips
- Operating temperature -40 ~ 122 F°
- PF >0.9 / Input: .85A/ Output: 36-66V DC
- Built-in 10kv surge protector

Product Information:

- Area Light Gen 1 and Shoebox Fixtures combined into one
- Sturdy die-cast aluminum housing finished with corrosion free powder coat
- Suitable for wet location, professionally waterproofed IP67
- Type III optics standard/ Type I, II, IV, & V by request
- Slim and architectural fixture
- 1.5ft power cable cord provided
- 7 year limited warranty (refer to website for more info)

Certifications:

- UL Listed for USA and CA
- DLC Listed
- CA T24 Compliant

LED - ARL2 - Watts - Color - TRI - Finish - Bracket - Voltage - Optics - Options Accessories

1

2

3

4

5

6

7

8

9

1 Product	2 Watts	3 Color	4 Finish	5 Bracket	6 Voltage	7 Optics	8 Options	9 Access.
LED-ARL2 Large Area Light	3P100W 60W 8,700lm 80W 11,600lm 100W 14,500lm 3P150W 120W 17,400lm 135W 19,575lm 150W 21,750lm 3P240W 180W 26,100lm 210W 30,450lm 240W 34,800lm 3P300W 260W 37,700lm 280W 40,600lm 300W 43,500lm	TRI 3000K 4000K 5000K	BZ Bronze* BLK Black WH White GY Grey CS Custom	YK Yoke TR Trunnion SF Slip Fitter SA Straight Arm SFA Slip Fitter and Straight Arm	UNV 100-277V HV* 277-480V * only available for the 3P150 and 3P300 model	II Type II III Type III (Standard) IV Type IV V Type V	(Blank) None BMS Daylight + Bi-Level Motion Sensor Combo (Internal) PC Photocell 120-277V PCHV Photocell 347-480V BT Bluetooth	(Blank) None HSS House Side Shield

40K Color only available in 150W* Bronze* is in stock. Other colors approx. 7 days Bronze* is a "Quick Ship"

Specs and model numbers are subject to change with or without notice

ACCESSORIES



Yoke

- Flood light bracket
- Ideal use on a wall
- Adjustable design to angle area light luminaire



Trunion

- Flood light bracket
- Ideal use on a wall
- Can be used for shoebox
- Adjustable design to angle area light luminaire



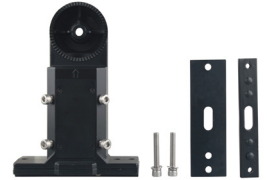
Straight Arm Adjustable

- Shoebox fixture bracket
- For use with round or square poles
- Can be used for shoebox
- Adjustable design to angle area light luminaire



Slip Fitter

- Shoebox fixture bracket
- For use with round or square poles
- Adjustable design to angle area light luminaire
- Inner diameter of 2.5" to fit 2-2.4" poll

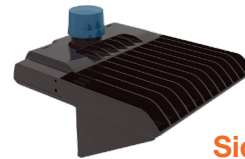


Slip Fitter & Straight Arm

- Flood light bracket
- For use with round or square poles
- Can be used for shoebox
- Adjustable design to angle area light luminaire

OPTICAL LENS

Accessory Model	Accessory Description
ARL2-OPTICS-II	ARL2 TYPE II OPTICAL LENS
ARL2-OPTICS-IV	ARL2 TYPE IV OPTICAL LENS
ARL2-OPTICS-V	ARL2 TYPE V OPTICAL LENS



House Side Shield

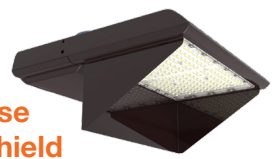
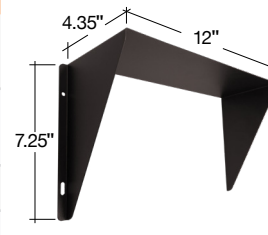
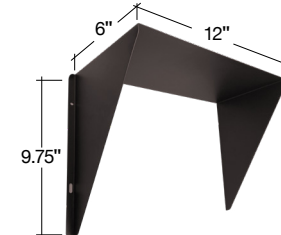


PHOTO CONTROL

Accessory Model	Accessory Description
PC-TWL-HV	LC4535INT 3PIN LOCKING TYPE THERMAL PHOTO CONTROL 480V INTERMATIC
PC-TWL-UNV	JL207C 3PIN LOCKING TYPE THERMAL PHOTO CONTROL 120-277V INTERMATIC
K121INT	3 PIN RECEPTACLE
K171H	7 PIN RECEPTACLE
PC-SHORT-CAP	3 PIN SHORTING CAP



ARL2-100/150W-SHIELD-BZ



ARL2-240/300W-SHIELD-BZ

SENSORS

Accessory Model	Accessory Description
TWC-DL	TWIST-C DAYLIGHT SENSOR (ALTERNATIVE FOR PHOTOCELL)
TWC-PIR-BT	TWIST-C PIR SENSOR BLUETOOTH (APP CONTROLLED)
TWC-MW-BT	TWIST-C MICROWAVE SENSOR BLUETOOTH (APP CONTROLLED)
TWC-PIR-1	TWIST-C PIR SENSOR
TWC-PIR-2	TWIST-C PIR SENSOR DAYLIGHT CAPABLE
TWC-MW-1	TWIST-C MICROWAVE SENSOR
TWC-MW-2	TWIST-C MICROWAVE SENSOR DAYLIGHT CAPABLE (SIMILAR TO HB01DMS-A)



TWC
Alternative for Photo Cell Sensor



Optic Lenses
100 / 150W 1 Pieces Required
240 / 300W 2 Pieces Required



3 Pin Photocell
120-277V



3 Pin Photocell
347-480V



3 Pin Receptacle



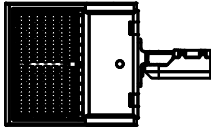
PC Short Cap



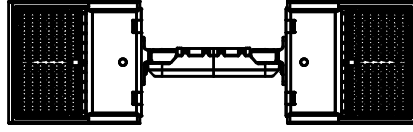
7 Pin Receptacle

Mounting Configuration

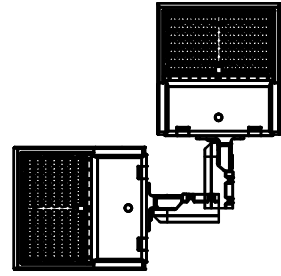
100-150 EPA RATING



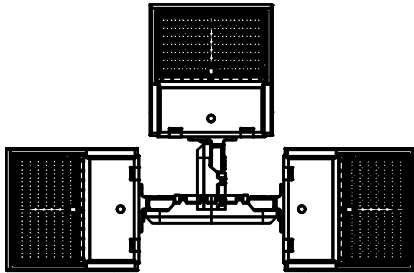
S Single
EPA: 0.55
Weight: 13.2 lbs



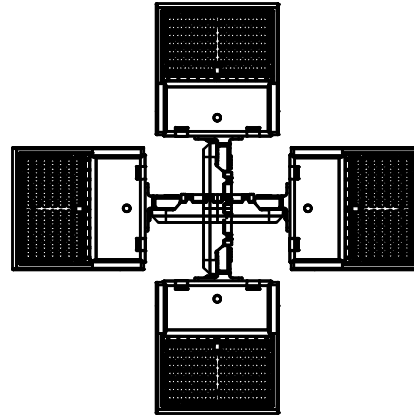
D180 Double 180°
EPA: 1.1
Weight: 26.4 lbs



D90 Double 90°
EPA: 0.72
Weight: 26.4 lbs

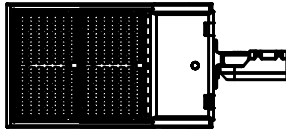


T90 Triple 90°
EPA: 1.1
Weight: 39.6 lbs

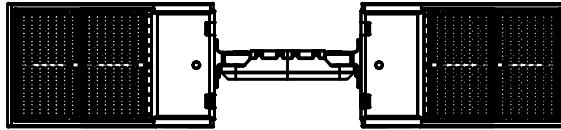


Q90 Quad 90°
EPA: 1.1
Weight: 52.8 lbs

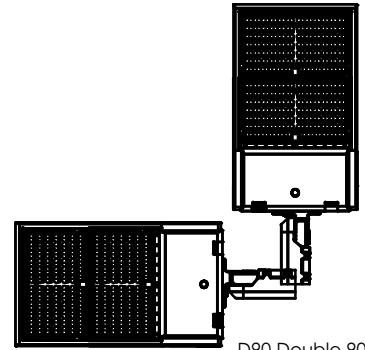
240-300 EPA RATING



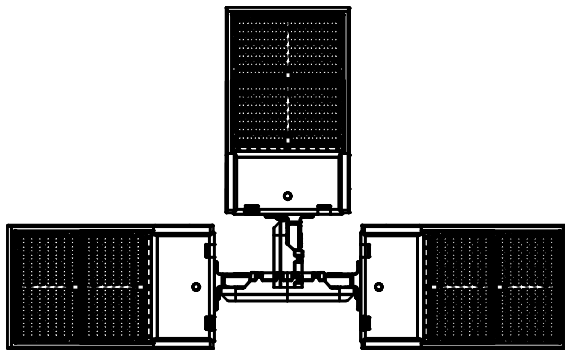
S Single
EPA: 0.75
Weight: 18.2 lbs



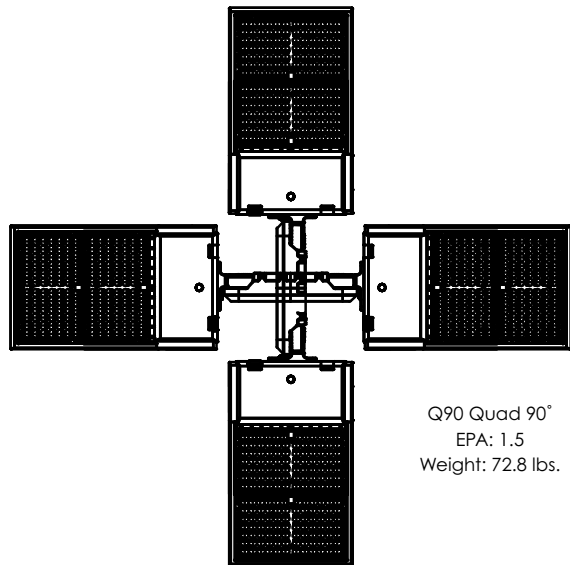
D180 Double 180°
EPA: 1.5
Weight: 36.4 lbs



D90 Double 90°
EPA: 0.92
Weight: 36.4 lbs

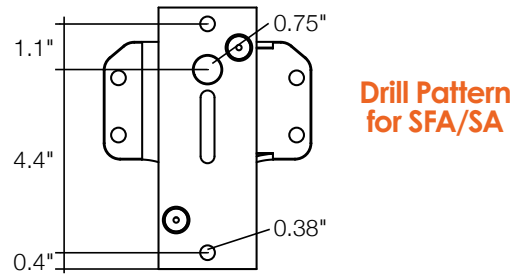
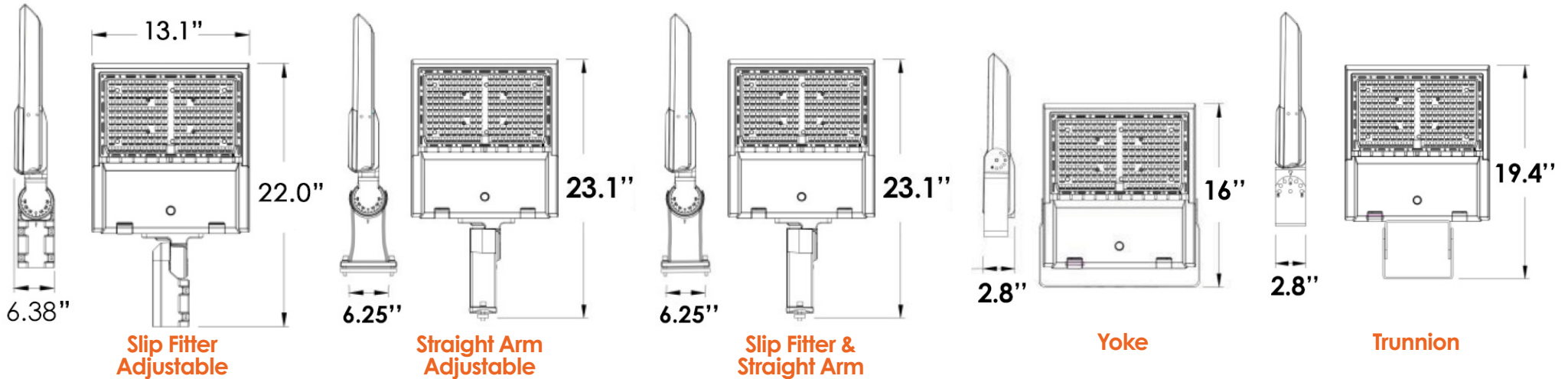


T90 Triple 90°
EPA: 1.5
Weight: 56.4 lbs

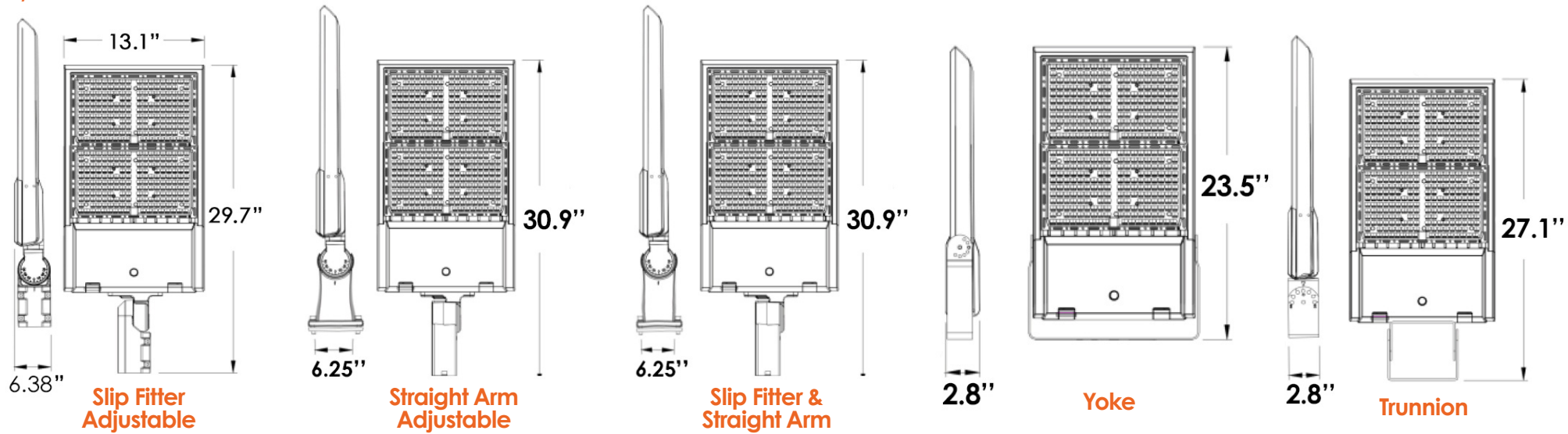


Q90 Quad 90°
EPA: 1.5
Weight: 72.8 lbs.

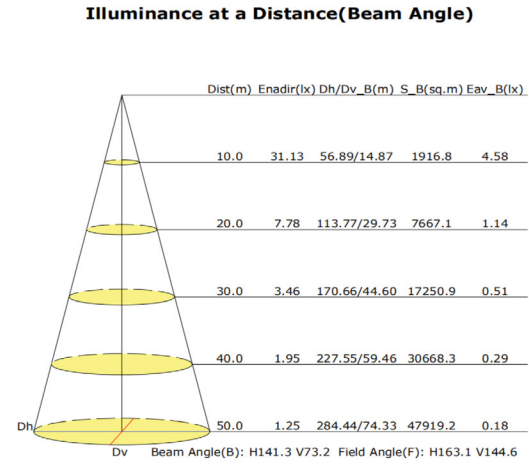
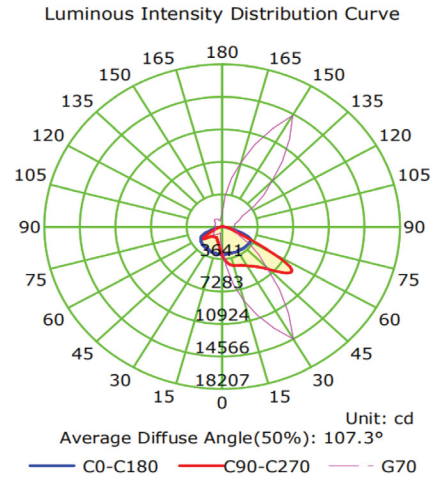
100/150W Dimensions



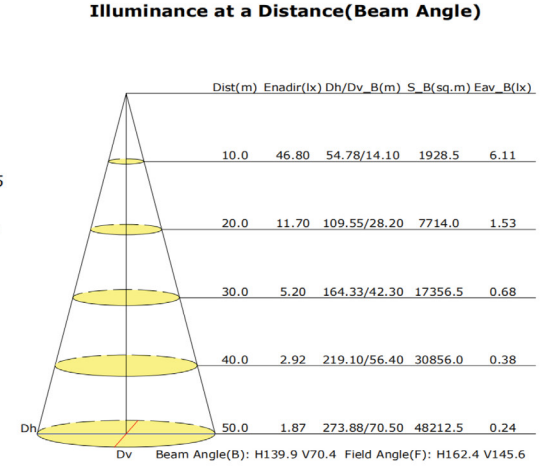
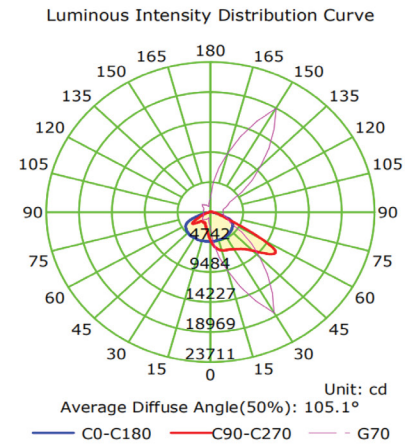
240/300W Dimensions



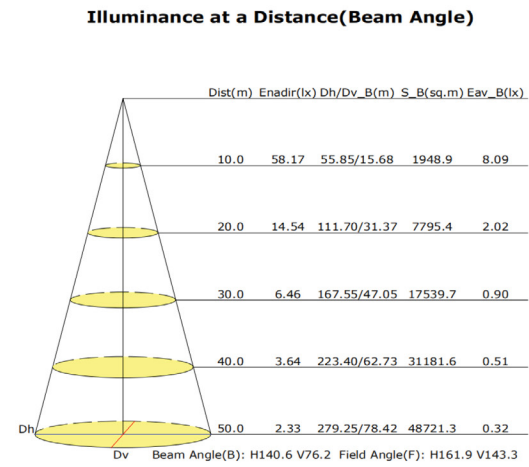
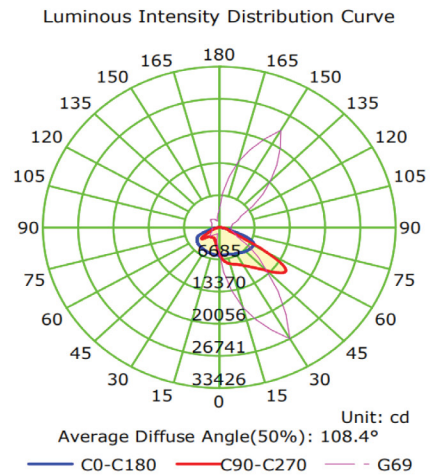
PHOTOMETRICS



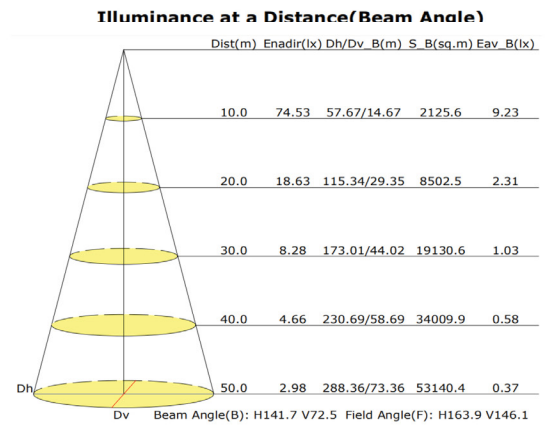
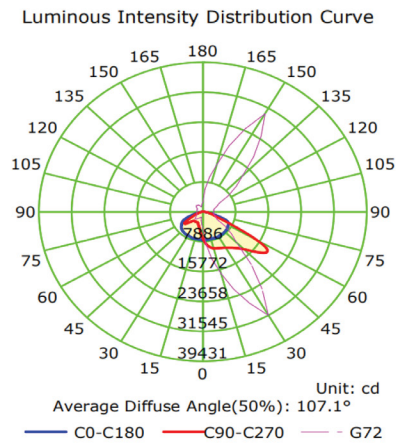
120W



150W & 185W



240W



300W