

**Commercial Grade
Occupancy/Vacancy
Sensor with 0-10V Dimmer
Switch**



Model #: DWDOS-010

Description: The Enerlites 0-10V passive infrared dimming wall switch sensors work by detecting the difference between heat emitted from the human body in motion and the background space. The sensor switch can turn a load on and hold it as long as the sensor detects occupancy. After no motion is detected for the set time delay, the load turned off automatically. This product has one relay (equal to Single Pole Switch).

Features:

- Turn lights ON/OFF automatically (Occupancy Mode)
- Manual ON / automatically OFF (Vacancy Mode)
- Time delay is adjustable from 15 seconds (test mode) to 30 minutes
- Neutral wire required
- Adjustable sensitivity settings
- Light level is adjustable
- 0-10VDC dimming
- Interchangeable face cover

Specifications:

Voltage	120-277VAC, 60 Hz
Load Rating.....	up to 50mA
IEC 60929 Ballast/Drivers Current Draw.....	2mA Maximum
Motor	1/8 HP
Time delay	15 Sec to 30 Mins
Light level	30 Lux – Datlight
Operation temperating	32° F--104° F

Testing & Code Compliance



WIRING

1. Connect RED wire from sensor to the HOT wire of the ballast/driver.
2. Connect BLACK wire from sensor to the HOT wire.
3. Connect WHITE wire from sensor to the NEUTRAL wire.
4. Connect GREEN wire from sensor to the GROUND wire.

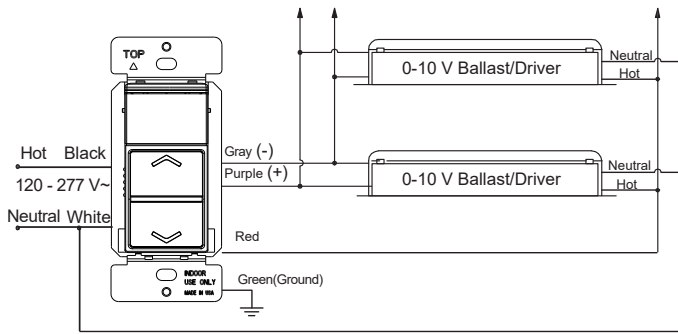


Figure 1
Wiring Diagram

Time Delay Adjustment

Located on the left, this switch adjusts the time delay.
Default position: 15 Seconds (Test mode)
Selectable: Test (15secs), 10, 20, and 30mins.

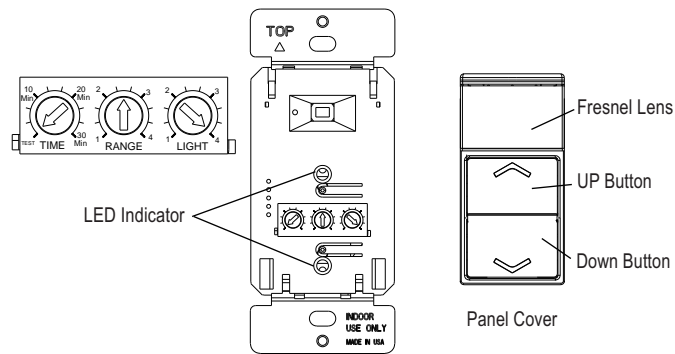


Figure 2

COLOR CHANGE

Gently remove the panel cover using a flat blade screwdriver. Find the slots at the bottom left or right of the panel cover and pry the panel cover loose.

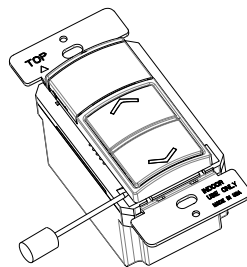


Figure 3