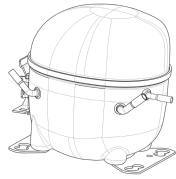


200-230V 50 / 208-230V 60Hz 1~



GENERAL DATA

Application: HBP
Refrigerant: R134a
Evaporating Temperature Range: -15°C to 10°C
Compressor Cooling: Fan
Fan air flow: 520 m³/h
Type: Hermetic reciprocating
Technology Type: On-Off
Expansion Device: Capillary Tube or Expansion Valve
Packing Quantity: Single - 1 pc
Displacement: 14.28 cm³
Horse power: 1.2 hp

Approvals:    

MECHANICAL DATA

Bore: 30.16 mm
Stroke: 20 mm
Oil Charge: 350ml +/-15ml
Free Internal Volume: 2.1 cm³
Maximum Recommended Refrigerant Charge: 350 g
Oil Type Configuration: Polyolester
Oil Type Viscosity: ISO22
Compressor pressurization: Dry air charge
Weight: 11.8 kg

ELECTRICAL DATA

Motor Type: CSIR
Starting Torque: HST
Voltage working range at 50 Hz: 180-244 V
Voltage working range at 60 Hz: 187-244 V
Maximum Motor Temperature: 130 °C
Start Winding Resistance: 10.9 Ω (± 10%) at 25°C
Run Winding Resistance: 3.59 Ω (± 10%) at 25°C
Locked Rotor Amperage (LRA): 26 A

MOUNTING ACCESSORIES

	Description	Code
Anchorage:	no	-
Capacitor Bracket:	no	-
Washer:	no	-
Pin:	no	-
Clip:	no	-
Rotolock valve:	no	-
Cover:	yes	2075282
Grommets:	yes	2221011
Sleeves:	yes	2222018
Terminal Board:	yes	1027060
Overload Protector Bracket:	yes	2075299

ELECTRICAL COMPONENTS

	Component type	Description	Code
Starting Device:	Current relay	MTRPH-55-65	2334101
Motor Protection:	External 3/4"	MRA6981-3259	2319041
Start Capacitor:		108-130 MFD 330V	2252379

EXTERNAL CHARACTERISTICS

Base Plate: European
Tray Holder: No
Height: 206 mm

	Internal Diameter (mm)	Material	Shape
Suction Connector	8.1	Copper	Slanted 42°
Discharge Connector	6.1	Copper	Straight
Process Connector	6.1	Copper	Slanted 42°

RATED POINT DATA

Cooling Capacity (W)	Power Consumption (W)	Current Consumption (A)	Gas Flow Rate (kg/h)	Efficiency (W/W)
±5%	±5%	±5%	±5%	±7%
1 666	758	4.29	36.72	2.20

Test condition: ASHRAE, Fan, Return Gas 35°C, Subcooling 8.3K, Evaporating: 7.2°C, Condensing: 54°C, Ambient: 35°C

PERFORMANCE CURVE DATA

200V 50Hz

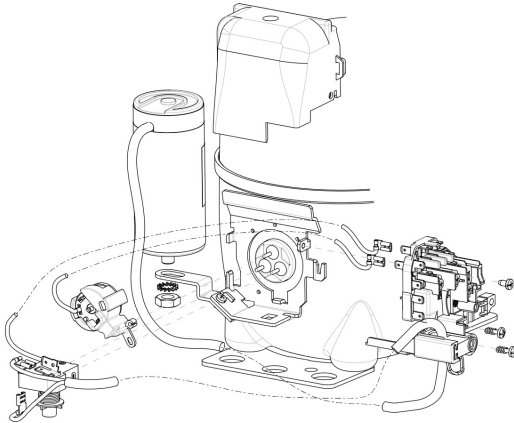
Condensing Temperature (°C)	Evaporating Temperature (°C)	Cooling Capacity (W)	Power Consumption (W)	Current Consumption (A)	Gas Flow Rate (kg/h)	Efficiency (W/W)
		±5%	±5%	±5%	±5%	±7%
35°C	10	2 273	687	3.98	42.95	3.31
	5	1 901	612	3.65	35.69	3.11
	0	1 570	544	3.36	29.31	2.89
	-5	1 279	483	3.11	23.78	2.65
	-10	1 029	428	2.90	19.05	2.40
	-15	819	380	2.74	15.11	2.15

Condensing Temperature (°C)	Evaporating Temperature (°C)	Cooling Capacity (W)	Power Consumption (W)	Current Consumption (A)	Gas Flow Rate (kg/h)	Efficiency (W/W)
		±5%	±5%	±5%	±5%	±7%
45°C	10	2 066	743	4.22	42.25	2.78
	5	1 723	665	3.87	35.00	2.59
	0	1 418	592	3.55	28.62	2.40
	-5	1 149	525	3.27	23.08	2.19
	-10	918	464	3.04	18.36	1.98
	-15	723	410	2.84	14.42	1.77

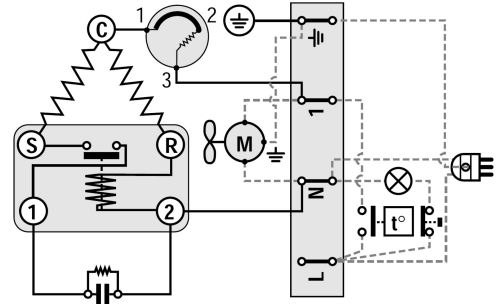
Condensing Temperature (°C)	Evaporating Temperature (°C)	Cooling Capacity (W)	Power Consumption (W)	Current Consumption (A)	Gas Flow Rate (kg/h)	Efficiency (W/W)
		±5%	±5%	±5%	±5%	±7%
55°C	10	1 817	814	4.56	40.61	2.23
	5	1 511	727	4.15	33.51	2.08
	0	1 238	645	3.78	27.28	1.92
	-5	999	569	3.45	21.89	1.76
	-10	793	497	3.16	17.31	1.60

Test condition: ASHRAE, Fan, Return Gas 35°C, Subcooling 8.3K, Ambient: 35°C

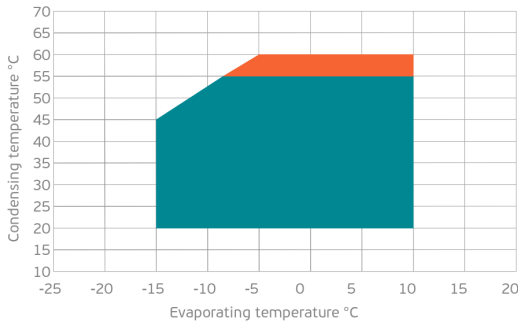
ASSEMBLY INSTRUCTION



WIRING DIAGRAM

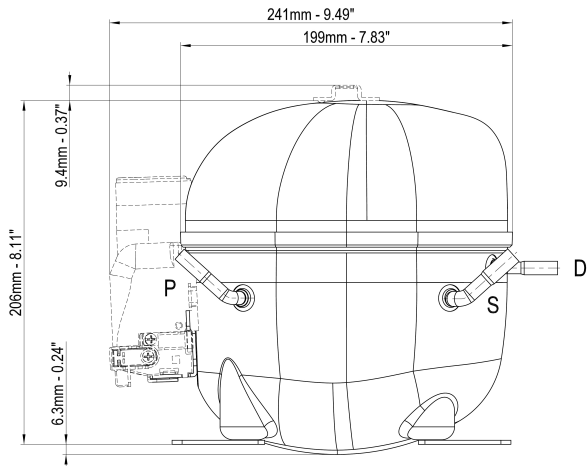


OPERATING ENVELOPE



- Operating Condition
- Transient Condition
- Superheating

NOTE: usage of compressors outside of intended working range cannot make use of the warranty, or should be consulted with Technical support.



	∅ mm	∅ in	Material
S - Suction	8.10 - 8.20	0.32	Cu
P - Process	6.10 - 6.20	0.24	Cu
D - Discharge	6.10 - 6.20	0.24	Cu

