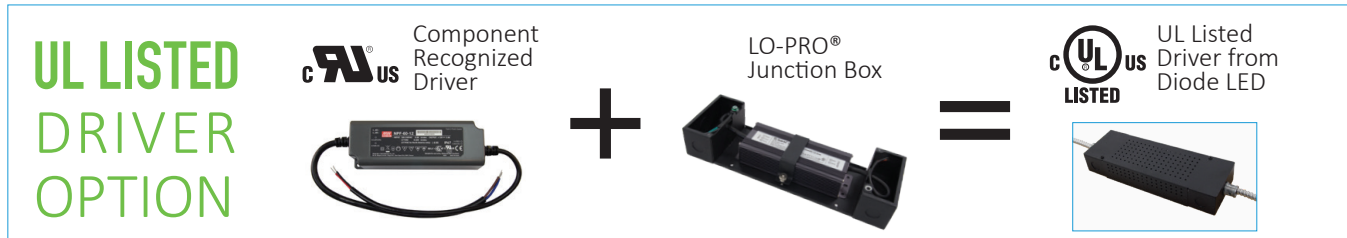


LO-PRO® JUNCTION BOX & DRIVER COMBO



Receive a UL Listed driver when you order the **LO-PRO JUNCTION BOX & DRIVER COMBO** on select power supplies.

Diode LED designed the patented LO-PRO® Junction Box Series— a unique, multipurpose electrical enclosure— to meet electrical code requirements as well as cost saving measures with easy installation of LED power supplies in a wide range of environments. The truly amazing benefit of this enclosure is the UL Listed Driver from select LED power supplies available from Diode LED.

Diode LED recognized a tremendous demand for a solution that enabled contractors to provide an electrical box that not only secured a power supply, but also certifies the power supply as UL Listed when ordered with the UL Listed electrical box. It's the ultimate solution for commercial projects requiring products with the highest certification to meet strict inspections.

QUICK SPECS

Environment	Indoor
Knockouts	0.5 in. knockouts
Material	Powder-coated stainless steel
Certification	UL Listed 1598, 508A & 2108

Stainless Steel Construction

Durable, powder-coated and corrosion-resistant.

Modular Mounting

Intuitive mounting design makes installation easy for a variety of power supplies, controls and electrical equipment.

Three-Sided Ventilation

Ventilation holes keep out dust while allowing heat to easily escape.

8x Knockouts

Connection to conduit entry is easy with eight (8) knockout options, fitting 0.5 in. strain reliefs.

Available In 3 Sizes

LO-PRO Box is available in three (3) sizes to fit small or large power supplies and other electrical equipment.

MULTIPLE UL CERTIFICATIONS

UL 2108 (UL# E469769) LED LOW-VOLTAGE POWER UNIT

Certified as a listed LED low-voltage power unit. Optional - only applies when purchased as a driver & j-box combo. See ordering options. A UL E469769 sticker will be placed on the outside of the LO-PRO box certifying the product as an LED low-voltage power unit.

UL 508A (UL# E486215) INDUSTRIAL CONTROL PANEL

Type 1 enclosure - indoor. Can be used as a standard j-box for any component. This certification always applies to the LO-PRO box.

UL 1598 (UL# E485321) LUMINAIRE FITTING

Certified for field installation with Class 2 LED driver models and lighting systems outlined on the next page. This certification always applies to the LO-PRO box.

The LO-PRO Junction Box makes it even easier to work with America's largest provider of low-voltage linear lighting solutions.

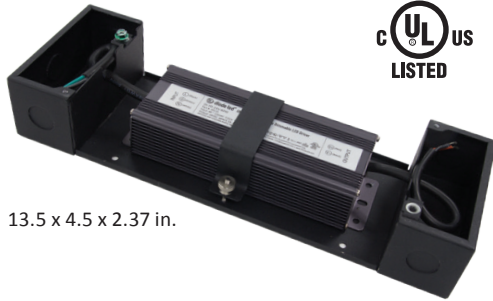


PATENTED

UL LISTED DRIVER OPTION

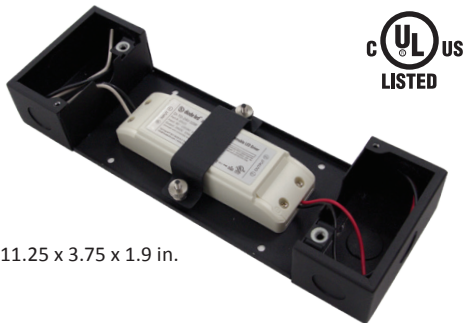
Use this chart to find drivers that qualify for the **LO-PRO COMBO**

LO-PRO® Junction Box - Large (LPL)



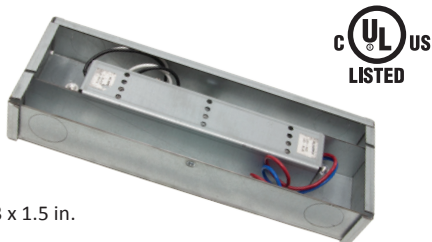
13.5 x 4.5 x 2.37 in.

LO-PRO® Junction Box - Small (LPS)



11.25 x 3.75 x 1.9 in.

LO-PRO® Junction Box - Mini (LPM)



8 x 3 x 1.5 in.

Mini For use with VLM Drivers only



Pictured next to a #2 pencil for scale.

OMNIDRIVE® Electronic Dimmable Drivers

UL DRIVER OPTION (DRIVER/J-BOX COMBO)	WATTAGE	INPUT VOLTAGE	OUTPUT VOLTAGE	PAGE
DI-TD-12V-10W-LPS	10W	120VAC	12VDC	134
DI-TD-12V-20W-LPS	20W			
DI-TD-12V-30W-LPS	30W			
DI-TD-12V-45W-LPL	45W			
DI-TD-12V-60W-LPL	60W			
DI-TD-24V-10W-LPS	10W	120VAC	24VDC	134
DI-TD-24V-20W-LPS	20W			
DI-TD-24V-30W-LPS	30W			
DI-TD-24V-45W-LPL	45W			
DI-TD-24V-60W-LPL	60W			
DI-TD-24V-80W-LPL	80W			
DI-TD-24V-96W-LPL	96W			

0-10V Drivers

UL DRIVER OPTION (DRIVER/J-BOX COMBO)	WATTAGE	INPUT VOLTAGE	OUTPUT VOLTAGE	PAGE
DI-DM-MW12V40W-0-10V-LPS	40W	120 / 240	12VDC	142
DI-DM-MW12V60W-0-10V-LPS	60W	277VAC		
DI-DM-MW24V60W-0-10V-LPS	60W	120 / 240	24VDC	142
DI-DM-MW24V90W-0-10V-LPL	90W	277VAC		

VLM Drivers

UL DRIVER OPTION (DRIVER/J-BOX COMBO)	WATTAGE	INPUT VOLTAGE	OUTPUT VOLTAGE	PAGE
VLM60W-12-LPM	60W	120 / 277VAC	12VDC	144
VLM60W-24-LPM	60W	120 / 277VAC	24VDC	
VLM100W-24-LPM	100W	120 / 277VAC	24VDC	
VLM60W-48-LPM	60W	120 / 277VAC	48VDC	
VLM100W-48-LPM	100W	120 / 277VAC	48VDC	

Constant Voltage Drivers

UL DRIVER OPTION (DRIVER/J-BOX COMBO)	WATTAGE	INPUT VOLTAGE	OUTPUT VOLTAGE	PAGE
DI-0904-LPS	20W	120VAC	12VDC	148
DI-0918-LPS	35W			
DI-0906-LPS	60W			
DI-CV-MW12V40W-277-LPS	40W	120 / 240	24VDC	150
DI-CV-MW12V60W-277-LPS	60W	277VAC		
DI-0970-LPS	35W	120VAC	24VDC	150
DI-CV-MW24V60W-277-LPS	60W	120 / 240		
DI-CV-MW24V90W-277-LPL	90W	277VAC		
DI-0954-LPL	96W	120VAC		