

HTDBL SERIES TAPE LIGHT

24V Tunable CCT Double Row

Need custom color temperature lighting at the turn of a dial? Tunable CCT series is a great option when on the fly color adjustment is a must, or when single CCT options just wont cut it. Adjust color temps from 2700K to 6000K and everything in between to create elegant lighting catered to times of day or application setting.

- Dynamic white color tuning from 2700K up to 6000K
- Stacked double row design seamlessly blends color mixing
- 90+ color rendering index
- Up to 400 Lumen output performance
- Consumes up to 5.8W per foot
- Cuttable every 1.97" with maximum runs up to 16.4ft
- 5-100% Dimmable with most secondary side controls
- Control color temperature via DMX or secondary side controls
- cULus Listed for indoor dry/damp locations
- 50,000 hours rated life



PROJECT: _____

TYPE: _____

LOCATION: _____

CATALOG NUMBER: _____



HTDBL-TW SERIES QUICK SPECS

| | |
|-----------------------|---|
| VOLTAGE | 24V DC |
| WATTAGE | 5.8W / ft |
| LUMENS | Up to 400Lm / ft |
| CCT | 2700K-6000K |
| CRI | 90+ |
| MAX RUN | 16.4ft |
| CUTTING POINTS | 1.97" (50mm) |
| IP RATING | IP54 - Coated |
| DIMMING | 5-100% (Requires Secondary Side Controller) |
| DIMENSIONS | 12mm (0.47") W x 1.65mm (0.06") H |
| BEAM ANGLE | 120° |
| OPERATING TEMP | 5°C (41°F) to 70°C (158°F) |
| CERTIFICATIONS | cULus Listed - Dry / Damp Location |
| RATED LIFE | 50,000 Hours |

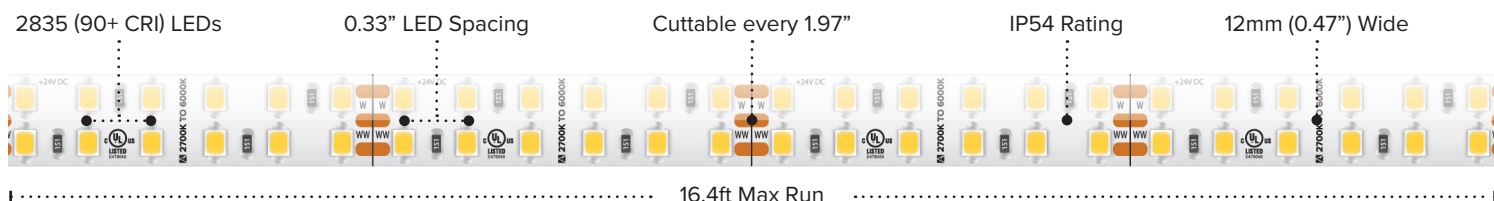
HTDBL-TW SERIES IP RATINGS



IP54 (Coated)

Features a light nano-coating applied to the tape light and LED's that protects from moisture and dust.
Best suited: Indoor dry & damp locations

HTDBL-TW SERIES QUICK LOOK



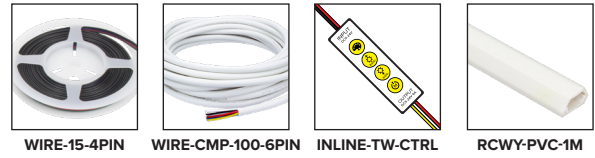
HTDDBL-TW SERIES ORDERING INFORMATION *Custom Cut Orders - Please Allow Up To 2-4 Weeks Order Processing & Delivery*

| ITEM NUMBER | VOLTAGE | CCT | LENGTH | LUMENS / FT | WATTAGE / FT | IP RATING | CRI | CUTTING | MAX RUN |
|--------------|---------|-------------|------------|-------------|--------------|-----------|-----|------------------|---------|
| HTDDBL-TW-CC | 24V | 2700K-6000K | Custom Cut | 400Lm / ft | 5.8W / ft | IP54 | 90+ | 1.97" (50.038mm) | 16.4 ft |

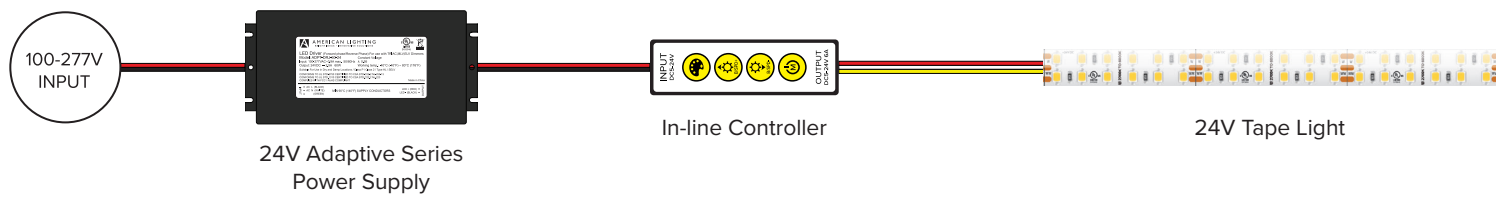
Custom Cuts (IP54) Include: Standard 3ft Lead Wire

HTDDBL-TW SERIES ACCESSORIES

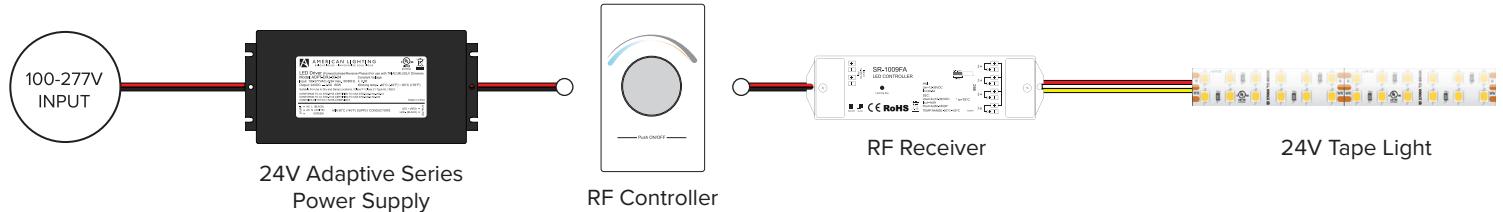
| ITEM NUMBER | DESCRIPTION |
|-------------------|--|
| WIRE-15-4PIN | 15ft (20/4) Wire Spool |
| WIRE-CMP-100-6PIN | 100ft (16/6) In-wall Rated Wire Spool |
| INLINE-TW-CTRL | Simple Select In-line Controller (Tunable CCT) |
| RCWY-PVC-1M | 1m Plastic Wire Cover Raceway (White) |



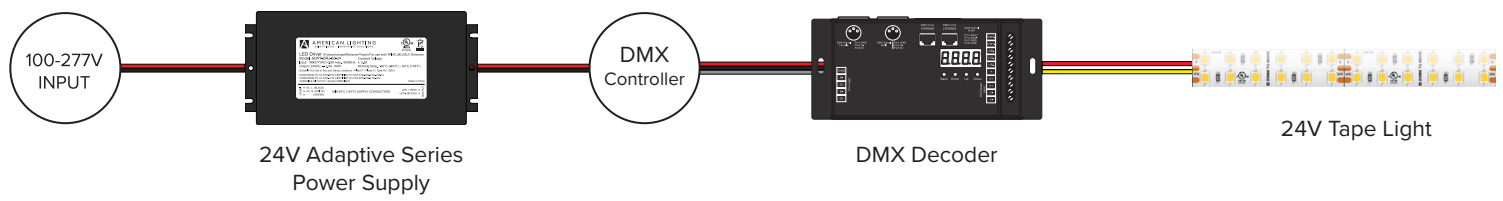
HTDDBL-TW SERIES SIMPLE SELECT QUICK SET-UP



HTDDBL-TW SERIES RF QUICK SET-UP



HTDDBL-TW SERIES DMX QUICK SET-UP



RECOMMENDED POWER SUPPLIES

| ITEM NUMBER | DESCRIPTION | MAX / MIN LOAD | INPUT VOLTAGE | OUTPUT VOLTAGE | DIMMABLE | DIMENSIONS |
|-----------------|--------------------------------|----------------|---------------|----------------|----------|--------------------------|
| ADPT-DRJ-30-24 | Adaptive Series 30W | 30W / 3W | 100-277V AC | 24V | Yes* | 6.49"L x 3.6"W x 1.02"H |
| ADPT-DRJ-60-24 | Adaptive Series 60W | 60W / 6W | 100-277V AC | 24V | Yes* | 7.4"L x 3.6"W x 1.02"H |
| ADPT-DRJ-96-24 | Adaptive Series 96W | 96W / 9.6W | 100-277V AC | 24V | Yes* | 8.66"L x 3.6"W x 1.61"H |
| ADPT-DRJ-192-24 | Adaptive Series 192W (2 x 96W) | 192W / 19.2W | 100-277V AC | 24V | Yes* | 10.94"L x 4.25"W x 1.8"H |
| ADPT-DRJ-288-24 | Adaptive Series 288W (3 x 96W) | 288W / 28.8W | 100-277V AC | 24V | Yes* | 11.85"L x 4.25"W x 1.8"H |

Phase Dimming Compatible With Most PWM Dimmers