



SLATE™ PRO 2.0 SPLE Series

Features

For new construction or renovation, the Slate Pro 2.0 Color-Control LED System provides lighting flexibility to suit the setting, facilitate a task or set the mood. Evenly lit, glare free illumination.

Powered by a 3-function control designed to provide full range dimming down to 5% or step dimming while also controlling the color temperature from 2700K warm to 4000K cool white light. Versatile wall or remote options for full installation flexibility, or download the AFXLight APP to control from your portable devices. Compatible with Alexa Voice Command operation.

The remote power supply can be hard wired or plugged into any standard 120V outlet and the Starter Kit comes with 72W power supply. (System components each sold separately).

- One-touch full-range dimming
- One-touch color temperature (CCT) adjustment, from warm to cool (2700K–4000K)
- Edge-Lit LED panels provide evenly distributed, glare-free light for all surfaces
- Linkable panels includes multiple connectors for a variety of layout options
- Ultra-low 1/2" LED panel profile
- Dual-run capability allows full installation flexibility
- 500 lumens per foot, 90 CRI
- Title 24 compliant
- Powder-coated housing with molded endcaps
- Each panel includes 12" connecting cable and direct connector
- Easy, flexible DC installation
- 120VAC input, 36W - 144W DC (depending on power supply)
- 2 power supply options 36W and 72W (72W standard with Starter Kit)
- Patent Pending
- Occupancy sensor (order separately) available for active motion detection

Construction

Durable extruded aluminum body with injection molded end caps. Power supply connections are made in side junction box (not included) or with cord and plug.

Finish

All exposed metal parts are post painted powder coat and available in White finish.

Diffuser

White Polycarbonate.

Electrical

Input 120V 60Hz, 36W -144W DC depending on power supply chosen. Starter kit power supply rated for 144W (MAX).

Lamping

SMT array, Edge-lit technology. 2700K-4000K non-replaceable LEDs, rated 50,000 hrs. 90 CRI.

Certification

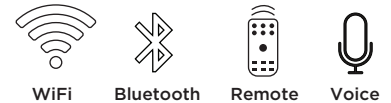
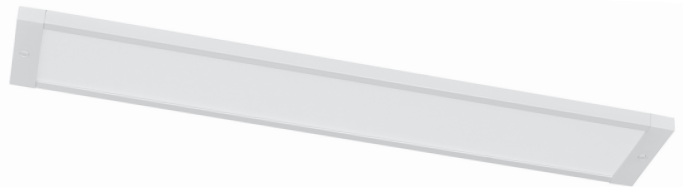
Fixture/Control switch/ Power supply are listed cETLus for damp location and carry a cETLus rating for undercabinet/convertible/linkable mounting.
Title 24/JA8 Compliant
FCC Compliant

Warranty

Limited warranty: This fixture is free from defects in materials and workmanship for a period of 5 years from date-of-purchase.

Specifications and dimensions subject to change without notice.

LOCATION		DATE
PREPARED BY		QUANTITY
COMMENTS		FIXTURE TYPE
CATALOG NUMBER		



SLATE™ PRO 2.0 SPLE Series



HOW TO BUILD A SYSTEM

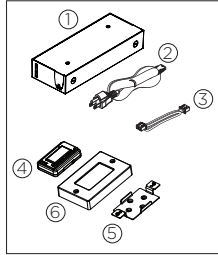
STEP 1 - ORDER STARTER KIT

SPLE-STRKIT (required)

Start Kit Contains:

- 1- 2.0 Power Supply w/ Bluetooth & Wi-Fi Capabilities
- 2- 3-Prong AC Power Cable
- 3- 96" DC Control Cable
- 4- Wireless Remote Control
- 5- Remote Mounting Bracket
- 6- Remote Wall Mount Cover Plate

Starter Kit



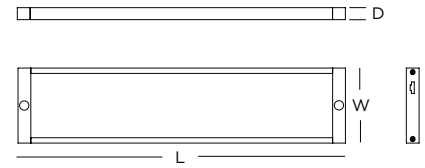
NOTE:

Screws for Mounting Bracket & Cover Plate are included.

STEP 2 - SELECT LED PANELS

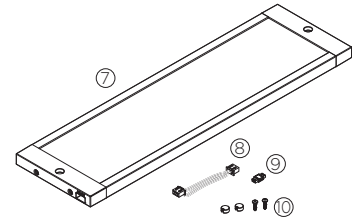
Size	White	Lumens		LPW	L	W	D
		Watts	4000K				
9 in.	SPLE9WH	4.5W	375	58	9"	4"	1/2"
14 in.	SPLE14WH	7.5W	585	60	14"	4"	1/2"
22 in.	SPLE22WH	12W	920	60	22"	4"	1/2"
32 in.	SPLE32WH	18W	1330	60	32"	4"	1/2"
40 in.	SPLE40WH	22W	1670	60	40"	4"	1/2"

Each panel includes (1) one:
 - 12" interconnect cord
 - Direct connector



Panels Contain:

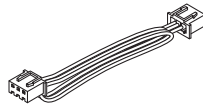
- 7- LED Panel
- 8- 12" interconnect cord
- 9- Direct Connector
- 10- Screws & Screw Caps



STEP 3 - CHOOSE ACCESSORIES/POWER SUPPLIES (AS NEEDED)

ACCESSORY

- SPLECL24 | 24" Interconnect cord
- SPLECL36 | 36" Interconnect cord
- SPLECL48 | 48" Interconnect cord
- SPLECL72 | 72" Interconnect cord



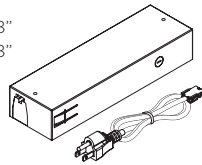
Direct Connector

- LCX-OCC | Occupancy Sensor
- SPLEDC



POWER SUPPLY (ONLY NEEDED IF ORDERING MORE THAN 72W OF PANELS)

(additional)	Watts	L	W	D
LCX-PWR36	36W	7-1/2"	2-1/2"	1-1/8"
LCX-PWR72	72W	7-1/2"	2-1/2"	1-1/8"



Each power supply includes (1) one:
 - AC power cord
 - DC input cord (10' long)